

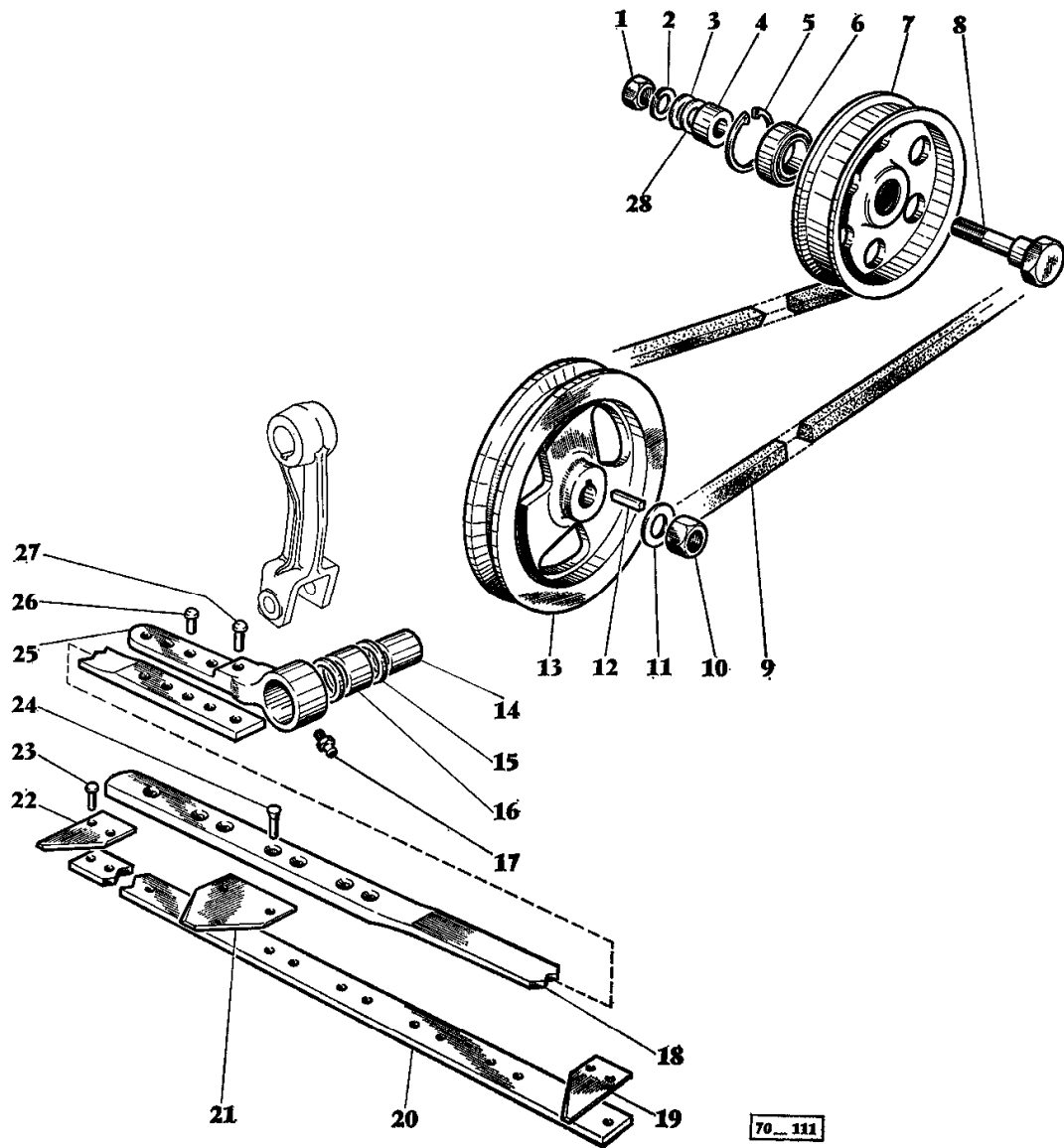
Page Title	Page Number
KNIFE AND KNIFE DRIVE ARRANGEMENT	2
KNIFE DRIVE BOX	5
REEL REAR SHAFT - VARIATOR	6
REEL ARMS AND PULLEYS	10
REEL ARMS AND PULLEYS	11C
PICK-UP REEL A : 12' - B : 14' - C: - 10' - 12'	13
VARIATOR MOVING BACK TO ZERO	15B
TABLE AUGER DRIVE SHAFT	17
TABLE AUGER - TABLE 10'	18
TABLE	22
TABLE GUARDS	29
REAR SHAFT GUARD	30
DIVIDERS	33
FLOATING EXTENSION	35B
TABLE WITH AUTOMATIC HEIGHT CONTROL - A: 3 M - 10'	37
TABLE ELEVATOR HOUSING	38
ELEVATOR TO CYLINDER - TOP SHAFT	42
ELEVATOR TO CYLINDER - LOWER SHAFT	45
TABLE THROUGH OUT CLUTCH	49
CYLINDER HOUSING	50
CLUTCH AND MAIN COUNTERSHAFT	54
LUBRICATING ASSY FOR MAIN COUNTER SHAFT	58
CYLINDER VARIATOR - CONTROL AND UPPER PULLEY - CONTROL AND UPPER PULLEY	62
CYLINDER DRIVE GEARBOX	65
CYLINDER	69
CONCAVE FIXED ROOTS AND REAR BEATER	70
CONCAVE ASSEMBLY REMOVABLE RODS	74
CONCAVE CONTROL	77
GRAIN PAN	78
SHAKER SHOE	82
CLEANING FAN	86
SCREEN KIT, CLEANING FAN	89A
AUGERS, GRAINS AND RETURN	90
RETURN ELEVATOR AND SLINGER HOUSING	94
STRAW WALKERS AND GRAIN PAN	98
REAR HOOD	102
FINGER DEFLECTOR	105
GRAINS ELEVATOR	106
GRAIN TANK	110
UNLOADER DRIVE AND CONTROLS	114
UNLOADER AUGERS	117
UNLOADING AUGERS EXTENSION	119C
COOLING AIR INTAKE	121
RADIATOR AND FAN	125
FUEL TANK AND TUBES	126
MANIFOLDS AND AIR FILTER	129
ELECTRICAL WIRING AND BATTERY	133
ENGINE POWER OUTPUT SHAFT	134
VARIABLE SPEED PULLEYS	137
TRACTION CLUTCH	138
GEAR SHIFT LEVERS	142
GEAR BOX AND DIFFERENTIAL	146
FINAL DRIVE	150
FRAME FRONT AXLE AND WHEEL	153
BRAKE	157
FRONT AXLE AND FINAL DRIVE	157A
BRAKE FLUID CONTAINER	158
BRAKE CYLINDER	161
BRAKE CONTROL	162
OPERATORS PLATFORM	166
SEAT	170
CONTROL BOX	173
INSTRUMENT PANEL	177
CONTROL BOX FOR AUTOMATIC TABLE HEIGHT CONTROL	178
WIRING ALARM AND JAUGE	182
STEERING	185

TABLE OF CONTENT

STEERING GEAR	189
POWER STEERING LINKAGE FROM 10317	191B
REAR AXLE AND WHEELS	193
PUMP BRACKET - PULLEY - PULLEY	197
HYDRAULIC PUMP	198
FOUR SPOOL UNI - BODY VALVE	201
HYDRAULIC OIL TANK AND VALVE	202
HYDRAULIC - TABLE, VARIATOR, STEERING - TABLE, VARIATOR, STEERING	205
HYDRAULIC - POWER STEERING - POWER STEERING	209
HYDRAULIC TO TABLE - TO TABLE	210
HYDRAULIC ON TABLE - ON TABLE	214
HYDRAULIC - SPOUT UNLOADER - SPOUT UNLOADER	221
HYDRAULIC VALVE - CYLINDER - UNLOADER SPOUT	225
RAMS - TABLE LIFT	226
HYDRAULIC ACCUMULATORS	229
VARIATOR SPEED AND STEERING RAMS	230
LIGHTING EQUIPMENT	234
LIGHTING EQUIPMENT EXPORT	242
CORN HEAD 33/43/63 - LIGHTING EQUIPMENT	245A
BELTS	246
CHAINS	249
CONVEYORS	253
LABELS	254
INSTRUCTION PLATES AND TRANSFERS	257
TOOLS	260
CYLINDER AND DRIVES - CASCADE SEPARATOR - CASCADE SEPARATOR	262
AUGER AND SLIP CLUTCH - CASCADE SEPARATOR	266
GRAIN ELEVATOR - CASCADE SEPARATOR	270
GRAIN ELEVATOR	274

2

LAME ET COMMANDE DE LAME
KNIFE AND KNIFE DRIVE ARRANGEMENT



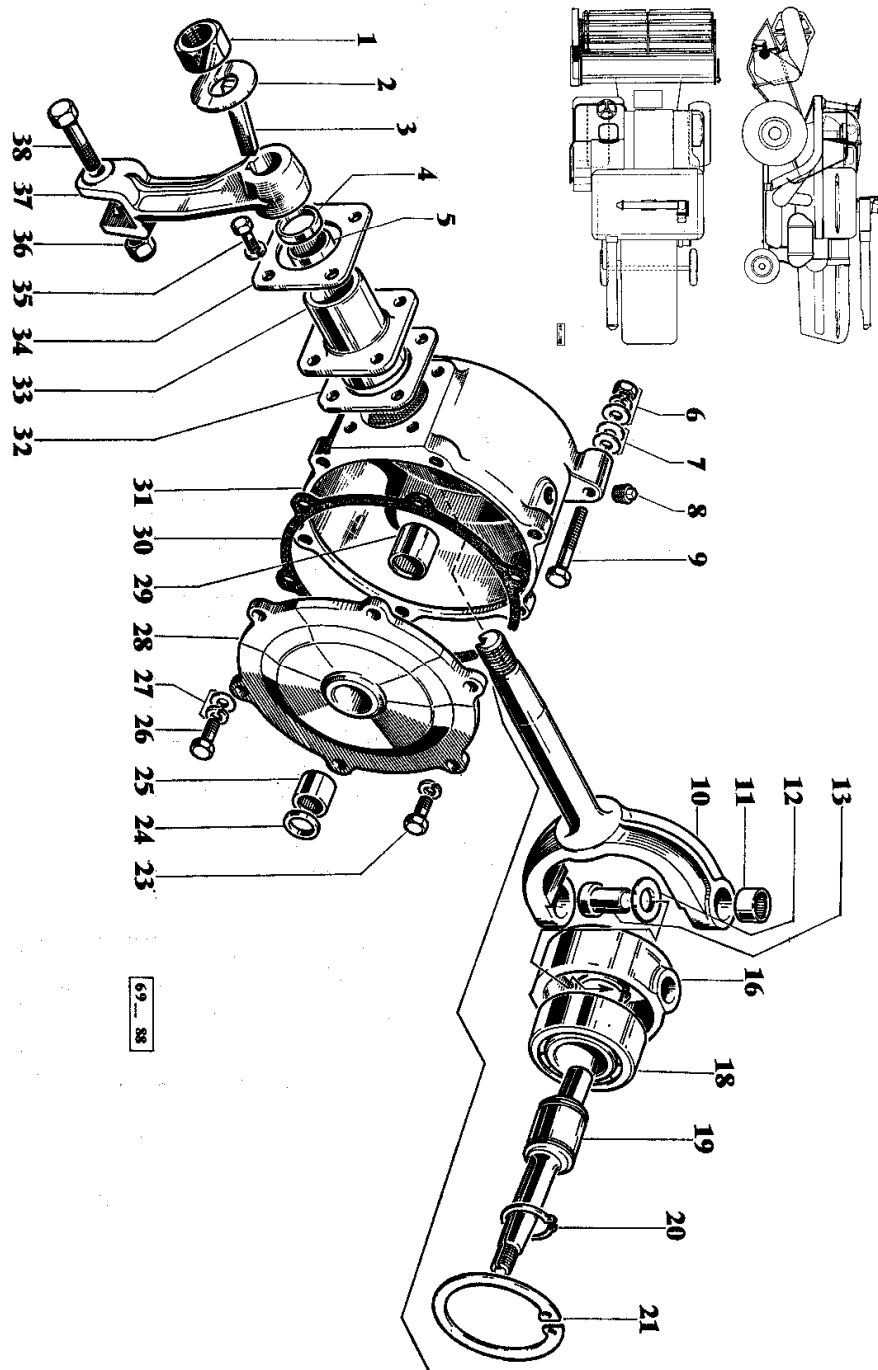
Imprimé en France

MOISSONNEUSE-BATTEUSE 410-8 - COMBINE 957 357 M2 - Emission 2 - VI/70

KNIFE AND KNIFE DRIVE ARRANGEMENT

Item	Part Number	Qty	Description	Comments
1	353427X1	1	Nut Unf	
2	353433X1	1	Lock Washer	
3	353760X1	1	Flat Washers	
4	786039M2	1	Spacer	
5	208230M1	1	Ring	
6	22258X	1	Bearing Assy	
7	910086M1	1	Pulley	Repairs and replaces 213736M1
8	227964M1	1	Bolt	
9	785585M1	1	Belt	
10	353427X1	1	Nut Unf	
11	833196M1	1	Washer	
12	10721X1	1	Key	
13	236258M2	1	Pulley	
14	239242M1	1	Roller	
15	831225M1	2	Seal	
16	833083M1	1	Bearing Needle	
17	13811X	1	Grease Nipple	
18		1		FOR CHANGE ORDER 911695M91
19	647116M1	1	Section	
20	785582M1	1	Stem	
	234660M1	1	Knife Back	
	234661M1	1	Knife Back	
21	206236M1	39	Section	
	206236M1	47	Section	
	206236M1	55	Section	
22	790863M1	1	Section	
23	49598X	74	Rivet	
	49598X	90	Rivet	
	49598X	106	Rivet	
24	10410X	8	Rivet	
	36493X	8	Rivet	
25		1		FOR CHANGE ORDER 911695M91
	785572M91	1	Knife	TABLE 10' INCL. REF. 14 - 27
	785574M91	1	Knife	TABLE 12' INCL. REF. 14 - 27
	785576M91	1	Knife	TABLE 14' INCL. REF. 14 - 27
26	29140X	4	Rivet	
27	29142X	1	Rivet	
28	353774X1	1	Washer	

BOITIER DE COMMANDE DE LAME
KNIFE DRIVE BOX



69...88

Imprimé en France

MOISSONNEUSE-BATTEUSE 410-8 - COMBINE

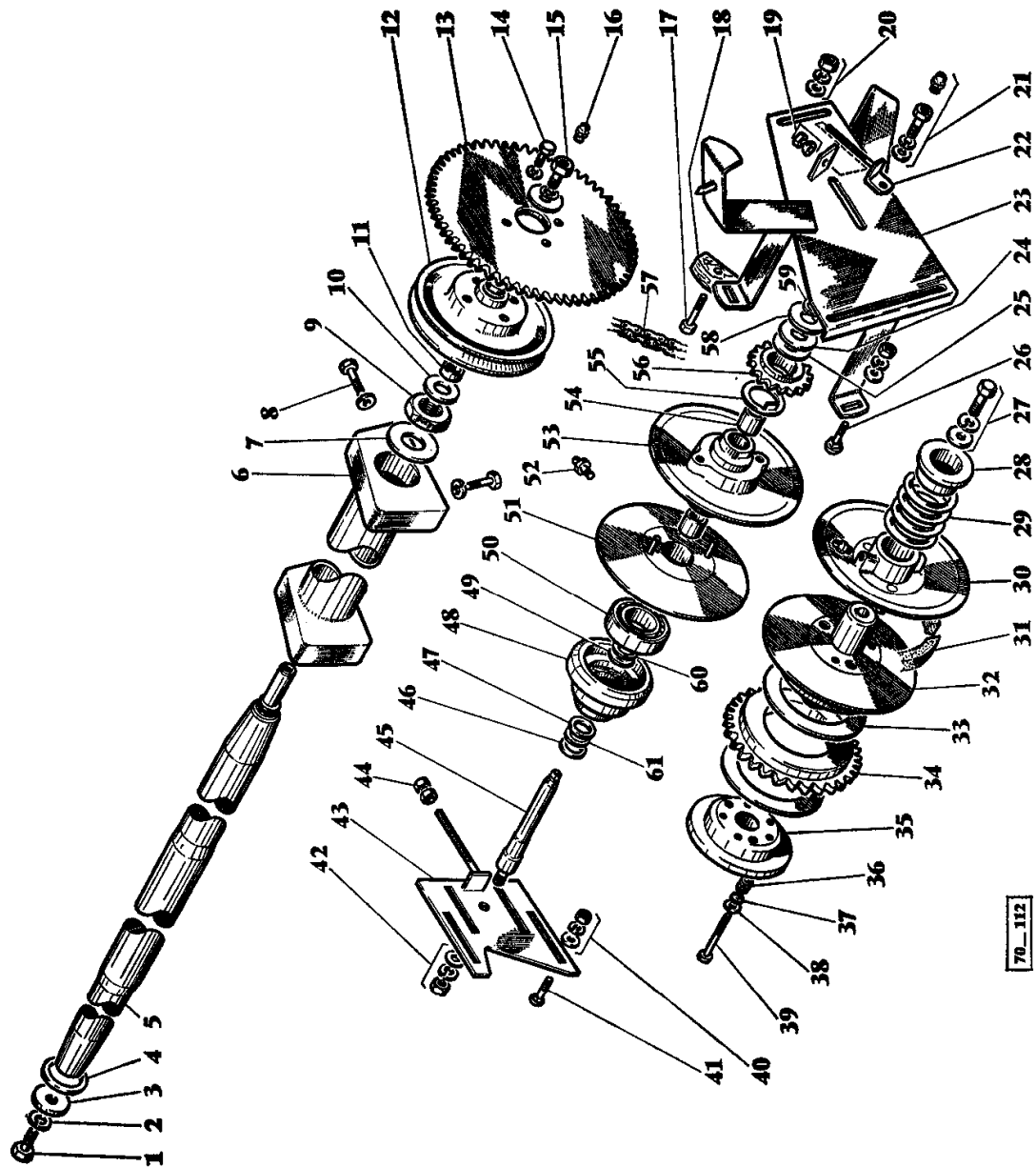
957 357 M2 - Emission 2 - V/69

KNIFE DRIVE BOX

Item	Part Number	Qty	Description	Comments
1	355646X1	1	Nut Unf	
2	239497M1	1	Washer	
3	49378X	1	Key	
4	831225M1	2	Seal	
5	831224M1	2	Needle	
6	353772X1	2	Washer	
	353432X1	2	Lock Washer	
	353426X1	2	Nut Unf	
7	353757X1	2	Washer	ON AN AVERAGE
	361096X1	4	Washer	ON AN AVERAGE
8	375181X1	2	Plug	
9	353569X1	2	Bolt Unf	
10	236569M2	1	Yoke	
11	832879M1	2	Bearing	
12	236584M1	2	Bearing	
13	239149M2	2	Pin	From Serial or Engine Number 23396, 23398, 23400 Up to Serial or Engine Number TABLE 10' - 24232, 24240, 24242 Up to Serial or Engine Number TABLE 12' & 14' - 27002
16	239865M1	1	Bearing	Up to Serial or Engine Number 23395, 23397, 23399 TABLE 10' 24239, 24241 Up to Serial or Engine Number 24230, 24231, 24239, 24241 TABLE 12' Up to Serial or Engine Number 27001 14'
	239148M3	1	Bearing	From Serial or Engine Number 23396, 23398, 23400 TABLE 10' From Serial or Engine Number 24232, 24240, 24242 12' From Serial or Engine Number 27002 14'
18	833309M1	1	Bearing	
19	239598M2	1	Shaft	
20	364553X1	2	Ring	
21	366123X1	1	Gasket	From Serial or Engine Number 23396, 23398, 23400 10' From Serial or Engine Number 24231, 24232, 24240 24242 12' From Serial or Engine Number 27002 14'
23	353678X1	4	Screw Unc	
	353446X1	4	Lock Washer	
24	831135M1	2	Seal	
25	353243X1	1	Bearing Assy	
26	353678X1	2	Screw Unc	
27	353446X1	2	Lock Washer	
	353755X1	2	Washer	
28	236568M1	1	Cover	
29	831823M1	1	Bearing Assy	
30	236567M1	1	Gasket	
31	236566M1	1	Housing	
	787910M92	1	Housing	CHANGE FOR HOUSING ASSEMBLY INCL. REF. 1, 2, 4, 5, 8 AND 10 - 33
32	236579M1	1	Gasket	
33	787483M2	1	Housing	
34	785613M1	1	Spacer	ON AN AVERAGE
35	362484X1	4	Screw	ON AN AVERAGE
	353432X1	4	Lock Washer	
36	376449X1	1	Nut Unf	
37	239160M2	1	Arm	
38	238499M1	1	Bolt	

6

ARBRE ARRIÈRE DE RABATTEUR - VARIATEUR
 REEL REAR SHAFT - VARIATOR



Imprimé en France

MOISSONNEUSE-BATTEUSE 410-8 - COMBINE 957 357 M2 - Emission 2 - VI/70

REEL REAR SHAFT - VARIATOR

Item	Part Number	Qty	Description	Comments
1	354751X1	1	Screw Unf	
2	353440X1	1	Lock Washer	
3	911887M1	1	Washer	
4	785897M1	1	Spacer	
5	911729M91	1	Shaft	FOR CHANGE ORDER 911889M91 SHAFT TABLE 10' Up to Serial or Engine Number 23931
	911730M91	1	Shaft	FOR CHANGE ORDER 911889M91 12' SHAFT TABLE 12' Up to Serial or Engine Number 24540
	911731M91	1	Shaft	Up to Serial or Engine Number 27001 Not serviced, order 911889M91 TABLE 14'
	911884M92	1	Shaft	From Serial or Engine Number 23932 SHAFT TABLE 10' 10'
	911885M92	1	Shaft	SHAFT TABLE 12' From Serial or Engine Number 24541
	911886M92	1	Shaft	SHAFT TABLE 14' From Serial or Engine Number 27002
6	785911M1	2	Bearing	
7	911536M1	1	Washer	
8	353519X1	12	Screw Unf	
	353446X1	12	Lock Washer	
9	911537M1	1	Nut	
10	785900M1	1	Washer	
11	785752M1	2	Bearing	
12	789197M91	1	Pulley	INCL. REF. 11
13	785901M1	1	Sprocket	Number of teeth/spines 40
	785902M1	1	Sprocket	Number of teeth/spines 69
	787398M1	1	Sprocket	Number of teeth/spines 35 FOR REEL HIGH SPEED
14	353691X1	4	Screw Unc	
	353434X1	4	Lock Washer	
15	791122M1	1	Bolt	Repairs and replaces 354746X1
	359405X1	1	Washer	
	786446M1	1	Washer	
16	13811X	1	Grease Nipple	
17	353544X1	1	Screw Unf	Repairs and replaces 353543X1
18	785844M1	1	Tightener	
19	787075M1	1	Washer	
	375109X1	1	Nut Unc	
20	353756X1	1	Washer	
	353434XX1	1	Washer	
	353430X1	1	Nut Unf	
21	783707M1	1	Screw	Repairs and replaces 353595X1
	353439X1	1	Lock Washer	
	783708M1	1	Washer	Repairs and replaces 353758X1
22	787071M91	1	Bracket	(A)
	783700M91	1	Bracket	(B)
23	913519M92	1	Bracket	(A)
	913864M91	1	Bearer	(B)
24	787594M1	1	Washer	
25	787595M1	1	Washer	
26	353794X1	2	Bolt Unf	
	353755X1	2	Washer	
	353446X1	2	Lock Washer	
	353916X1	2	Nut Unf	
27	353614X1	1	Screw Unf	Repairs and replaces 353612X1
	353760X1	1	Flat Washers	
	353433X1	1	Lock Washer	
28	788706M2	1	Flange	
29	913455M1	1	Spring	Repairs and replaces 786241M1
	913456M1	1	Spring	Repairs and replaces 788705M1
30	785894M92	1	Pulley Half	
	13811X	1	Grease Nipple	
31	789853M1	1	Belt	Repairs and replaces 785806M1

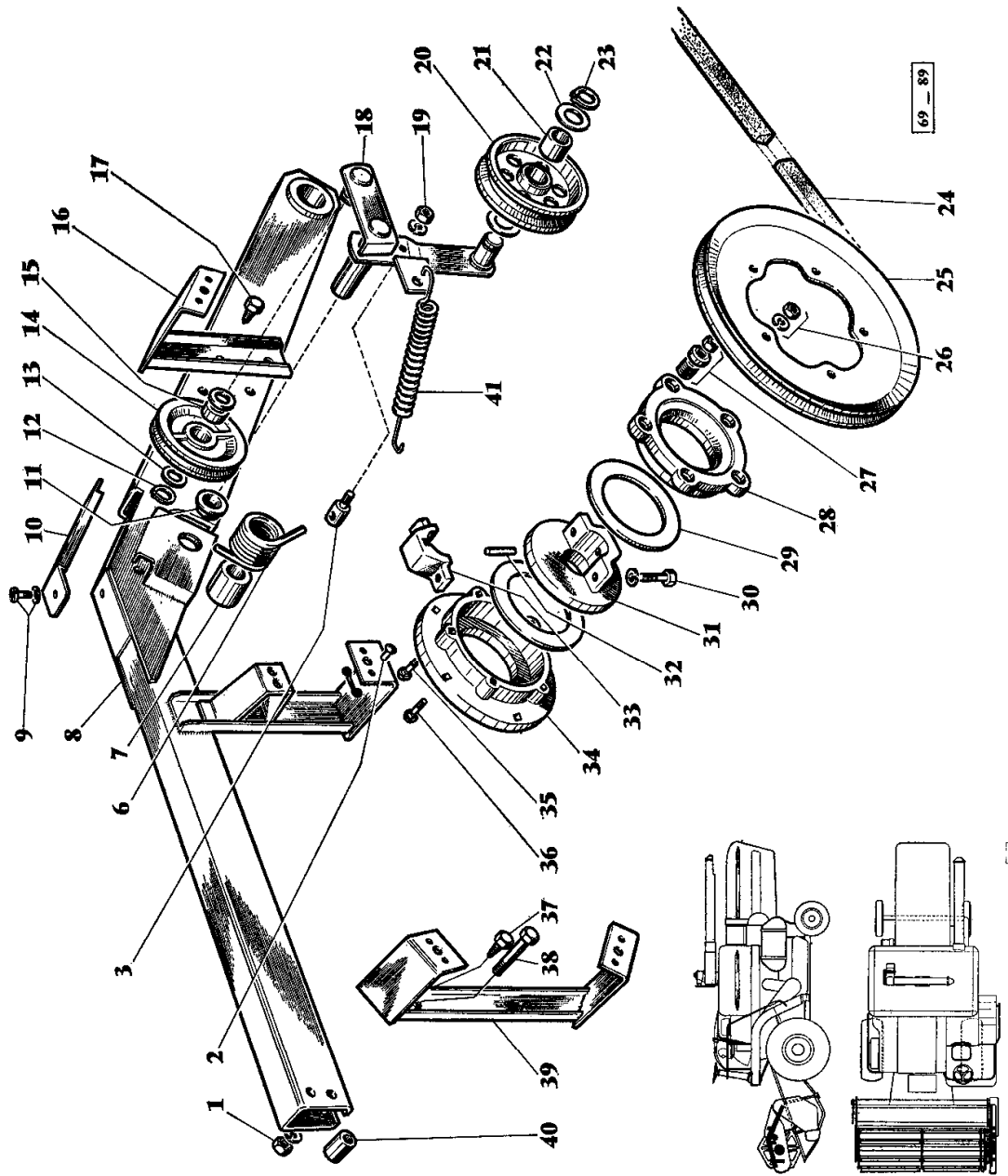
REEL REAR SHAFT - VARIATOR

Item	Part Number	Qty	Description	Comments
32	785893M3	1	Pulley	
33	790844M2	2	Washer	
34	785890M1	1	Sprocket	Number of teeth/spines 41
	786147M1	1	Sprocket	Number of teeth/spines 49
35	794504M91	1	Disc	
36	215873M1	5	Spring	
37	790845M1	5	Guide	
38	353756X1	5	Washer	
39	911508M1	5	Screw	
40	353755X1	4	Washer	
	353916X1	4	Nut Unf	
	353446X1	4	Lock Washer	
41	353792X1	4	Bolt Unf	
42	353776X1	1	Washer	
	353442X1	1	Washer	
	353920X1	1	Nut Unf	
43	785852M91	1	Plate	
44	375109X1	2	Nut Unc	
45	785797M1	1	Shaft	(A)
	783684M1	1	Shaft	(B)
46	785886M1	1	Seal	
47	359306X1	1	O Ring	
48	785889M1	1	Housing	(A)
	782630M1	1	Housing	(B)
49	359300M1	1	O Ring	INCL. REF. 359302X1
50	785885M1	1	Bearing	
51	911648M94	1	Pulley	
	785883M2	2	Pin	
52	13811X	1	Grease Nipple	
53	785735M92	1	Pulley	(A)
	783852M91	1	Pulley	(B)
54	785907M1	2	Bush	
55	785733M1	1	Washer	(A)
	789227M1	1	Washer	(B)
56	785732M1	1	Sprocket	(A)
	789228M1	1	Sprocket	(B)
57	785843M91	1	Chain	
58	783800M1	1	Bearing Assy	
59	783801M1	1	Washer	
60	195920M1	1	Washer	
61	361171X1	1	Washer	

(A)
Up to Serial or Engine Number
(B)
From Serial or Engine Number

10

BRAS ET POULIES DE RABATTEUR
REEL ARMS AND PULLEYS



Imprimé en France

MOISSONNEUSE-BATTEUSE 410-8 - COMBINE

957 357 M2 - Emission 2 - V/69

REEL ARMS AND PULLEYS

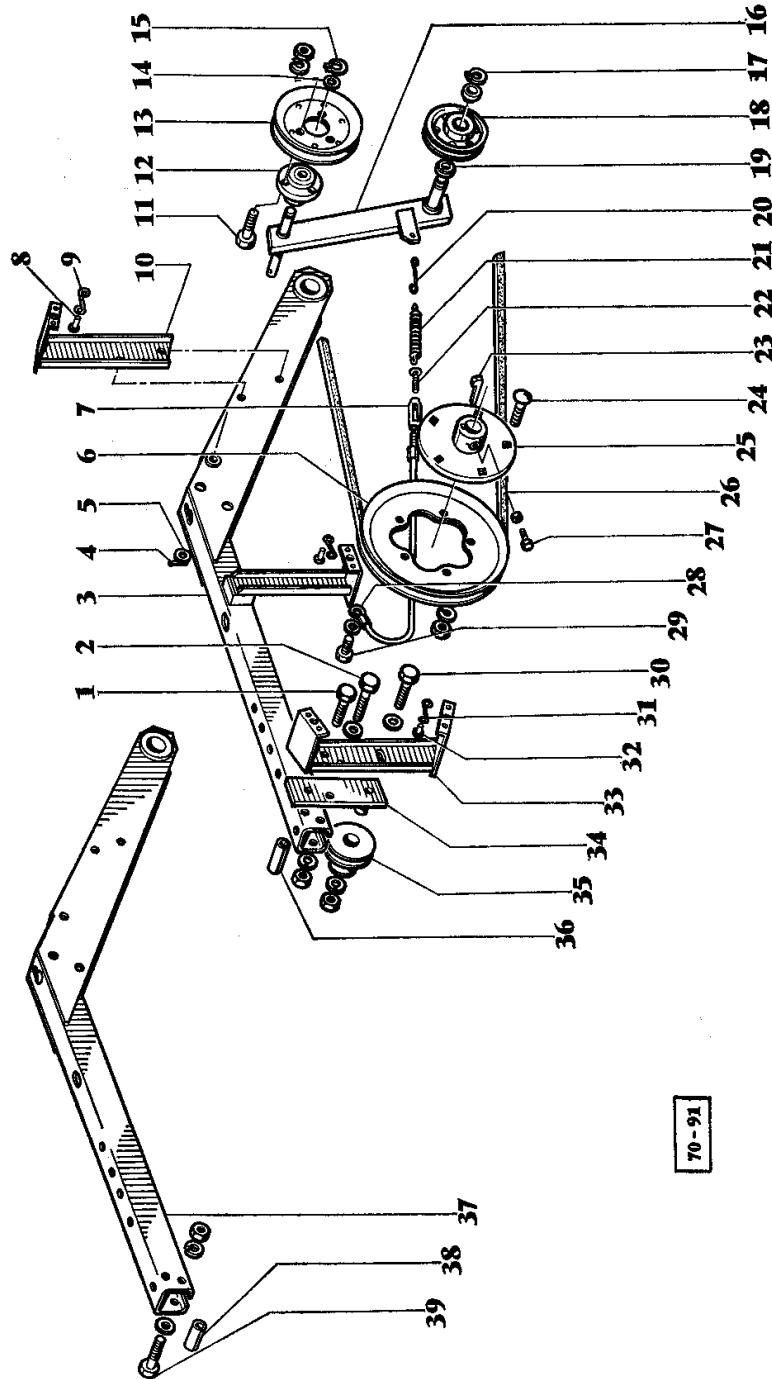
Item	Part Number	Qty	Description	Comments (A)
1	353918X1	2	Nut Unf	
	353441X1	2	Lock Washer	
2	16861X	2	Rivet	Repairs and replaces 16862X
	785601M1	1	Spring	
3	785871M1	1	Retainer	
6	788017M1	1	Spring	
7	785859M1	1	Support	
8	911601M92	1	Arm	Left Hand INCL. REF. 2 AND 11
	785808M91	1	Arm	Right Hand INCL. REF. 2 AND 11
9	357444X1	4	Screw	
	353753X1	4	Washer	
10	785841M1	2	Cover	INCL. REF. 8 AND 9
11	785817M1	1	Bush	
12	22042X	1	Segment	INCL. REF. 12
13	785881M1	2	Washer	
14	789211M91	1	Pulley	INCL. REF. 15
15	785880M1	1	Bearing	
16	787585M91	1	Harness	INCL. REF. 1 AND 2
17	785906M1	2	Screw	
18	789212M91	1	Support	
19	353446X1	1	Lock Washer	
	353916X1	1	Nut Unf	
20	785873M91	1	Pulley	INCL. REF. 20
21	785805M1	1	Bearing	
22	785875M1	2	Washer	
23	352438X1	1	Circlip	
24	789217M1	1	Belt	
35	789207M91	1	Pulley	
26	353434X1	5	Lock Washer	
	353431X1	5	Nut Unf	
27	787395M1	5	Spring	Up to Serial or Engine Number 23395, 23397, 23399 TABLE 10'
	GB1318	5	Washer	Up to Serial or Engine Number 24230, 24231, 24239 24241 TABLE 12'
	353431X1	5	Nut Unf	Up to Serial or Engine Number 27001 TABLE 14' Not serviced, order 911940M91
	789205M1	5	Spring	From Serial or Engine Number 23396, 23398, 23400 TABLE 10' From Serial or Engine Number 24232, 24240, 24242 TABLE 12' From Serial or Engine Number 27002 TABLE 14'
	789218M1	5	Cap	From Serial or Engine Number 23396, 23398, 23400 TABLE 10' From Serial or Engine Number 24232, 24240, 24242 TABLE 12' From Serial or Engine Number 27002 TABLE 14'
28	GT163	1	Disc	
29	GK5034	2	Washer	
30	353702X1	2	Bolt Unc	
	353432X1	2	Lock Washer	
31	637819M1	1	Bearing Carrier	
32	10240X	1	Pin	
33	637820M1	1	Clamp	
34	202981M1	1	Carrier	
35	353821X1	5	Bolt Unf	Up to Serial or Engine Number 23395, 23397, 23399 TABLE 10' Up to Serial or Engine Number 24230, 24231, 24239 24241 TABLE 12' Up to Serial or Engine Number 27001 TABLE 14' Not serviced, order 911940M91
	353822X1	5	Bolt	From Serial or Engine Number 23396, 23398, 23400

REEL ARMS AND PULLEYS

Item	Part Number	Qty	Description	Comments
				TABLE 10' From Serial or Engine Number 24232, 24240, 24242
				TABLE 12' From Serial or Engine Number 27002
				TABLE 14' Not serviced, order 911940M91
36	353809X1	5	Bolt Unf	
37	785906M1	1	Screw	Right Hand
38	354492M1	2	Spacer	
39	786582M91	2	Bolt	
40	785857M1	1	Spacer	INCL. 2 REF. 2
41	789221M1	1	Spring	(A) Up to Serial or Engine Number 23814 (TABLE 3,00 M - 10') Up to Serial or Engine Number 24498 (TABLE 3,60 M - 12') Up to Serial or Engine Number 27001 (TABLE 4,20 M - 14')

11 C

BRAS ET POULIE DE RABATTEUR
REEL ARMS AND PULLEYS



70-91

Imprimé en France

MOISSONNEUSE-BATTEUSE 410-8 - COMBINE 957 357 M2 - Emission 1 - VI/70

REEL ARMS AND PULLEYS

Item	Part Number	Qty	Description	Comments
1	354497X1	1	Bolt Unf	(A)
	353446X1	1	Lock Washer	
	353916X1	1	Nut Unf	
2	354497X1	1	Bolt Unf	
	353446X1	1	Lock Washer	
	353755X1	1	Washer	
	353916X1	1	Nut Unf	
3	913534M93		Arm	Left Hand INCL. REF. 3
	785601M1	1	Spring	
	16861X	2	Rivet	(B)
	16862X	2	Rivet	(B)
	785817M1	2	Bush	
4	354070X1	1	Pin	
5	353762X1	1	Washer	
6	789207M91	1	Pulley	
7	913572M1	1	Tensioner	
8	785601M1	1	Spring	
9	16861X	2	Rivet	(B)
	16862X	2	Rivet	(B)
10	913545M91	1	Bracket	INCL. REF. 8 AND 9
	785906M1	2	Screw	
11	353512X1	3	Bolt	
	353446X1	3	Lock Washer	
	353916X1	3	Nut Unf	
12	913570M91	1	Hub	
	785880M1	1	Bearing	
13	210630M11	1	Pulley	
14	785881M1	2	Washer	
15	22042X	1	Segment	
16	913550M91	1	Arm	
17	352438X1	1	Circlip	
18	913883M91	1	Pulley	
19	785875M1	2	Washer	
20	913674M3	1	Knotter Hook	
21	789221M1	1	Spring	
22	913573M1	1	Bolt	
23	MP1153	1	Key Door	
24	353807X1	5	Screw Unf	
	353434X1	5	Lock Washer	
	353431X1	5	Nut Unf	
25	913880M1	1	Hub	
26	796487M1	1	Belt	
27	355204X1	1	Screw Unc	
28	913571M1	1	Cable	
29	353507X1	1	Bolt Unf	
	353441X1	1	Lock Washer	
	353918X1	1	Nut Unf	
30	353511X1	1	Bolt Unf	
	363332X1	1	Washer	
	375233X1	1	Washer	
	353441X1	1	Lock Washer	
	353918X1	1	Nut Unf	
31	785601M1	2	Spring	
32	16861X	4	Rivet	(B)
	16862X	4	Rivet	(B)
33	913547M93	1	Bracket	
34	913738M91	1	Support	
35	913568M1	1	Pulley	
36	B2368	1	Spacer	
37	913539M92	1	Arm	H
38	B2368	1	Spacer	
39	353533X1	1	Bolt Unf	
	353446X1	1	Lock Washer	
	353916X1	1	Nut Unf	

(A)
From Serial or Engine Number 28815 (TABLE 3,00 M - 10')
From Serial or Engine Number 24499 (TABLE 3,60M -

Buy Now



Our support email:

ebooklibonline@outlook.com