



SERVICE MANUAL

WHEELED EXCAVATOR
JS145W, JS160W, JS20 MH

EN - 9813/9550 - ISSUE 1 - 02/2018

This manual contains original instructions, verified by the manufacturer (or their authorized representative).

Copyright 2018 © JCB SERVICE
All rights reserved. No part of this publication may be reproduced, stored in a retrieval system, or transmitted in any form or by any other means, electronic, mechanical, photocopying or otherwise, without prior permission from JCB SERVICE.

www.jcb.com

Foreword

The Operator's Manual

⚠
You and others can be killed or seriously injured if you operate or maintain the machine without first studying the Operator's Manual. You must understand and follow the instructions in the Operator's Manual. If you do not understand anything, ask your employer or JCB dealer to explain it.

Do not operate the machine without an Operator's Manual, or if there is anything on the machine you do not understand.

Treat the Operator's Manual as part of the machine. Keep it clean and in good condition. Replace the Operator's Manual immediately if it is lost, damaged or becomes unreadable.

Contents

01 - Machine

03 - Attachments, Couplings and Load Handling

06 - Body and Framework

09 - Operator Station

12 - Heating, Ventilating and Air-Conditioning (HVAC)

15 - Engine

18 - Fuel and Exhaust System

21 - Cooling System

24 - Brake System

25 - Steering System

27 - Driveline

30 - Hydraulic System

33 - Electrical System

72 - Fasteners and Fixings

75 - Consumable Products

78 - After Sales

Remove and Install

Before Removal

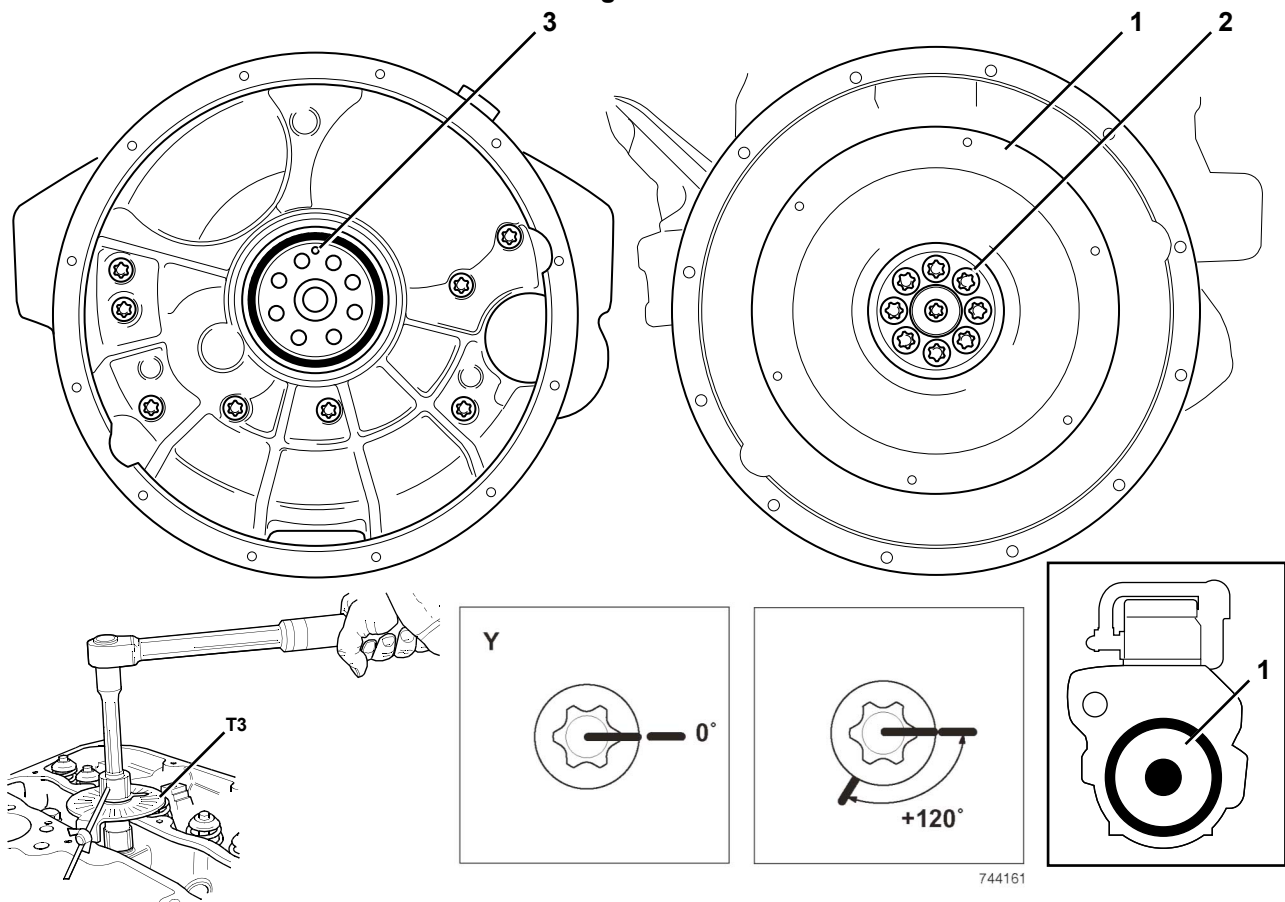
1. This procedure requires service parts. Make sure you have obtained the correct service parts before you start. The flywheel is installed with a crankshaft position sensor target disc. **DO NOT** remove the target disc. If the disc is defective the flywheel must be replaced.

2. Make sure that the engine is safe to work on. If the engine has been running, let it cool before you start the service work.
3. Get access to the engine.

Removal

1. Remove the bolts and withdraw the flywheel from the crankshaft hub. The bolts **MUST NOT** be reused. Discard the bolts.

Figure 209.



- 1 Flywheel
 3 Flywheel location dowel

- 2 Flywheel fixing bolts (x8)
 Y Angle tightening mark

Installation

1. The installation procedure is the opposite of the removal procedure. Additionally do the following steps.
2. Make sure that all items are clean and free from damage and corrosion.
3. Align the flywheel location dowel.
4. Renew the fixing bolts. Tighten the new bolts to the correct torque value in three stages.

Tighten the bolts in sequence in diagonally opposing pairs. As a visual check, mark the bolts to the flywheel before you start. When the bolts have been angle tightened the marks will appear as at 120°.

Table 82. Torque Table

Item	Torque Value (Nm)	Angle (degrees)
2 (1st Stage)	40	
2 (2nd Stage)	120	
2 (Final Stage)		+120

03 - Housing

Remove and Install

Special Tools

Description	Part No.	Qty.
Template for Sealant Flywheel Housing to Gear Case (4 Cyl Elec)	892/12349	1

Before Removal

The flywheel housing is integral with the drive gears front case. When the housing is removed the drive gears will be exposed. DO NOT attempt to remove the camshaft and the drive gears. Removing the camshaft with the engine in the upright position will cause the tappets to dislodge, requiring the engine block to be dismantled.

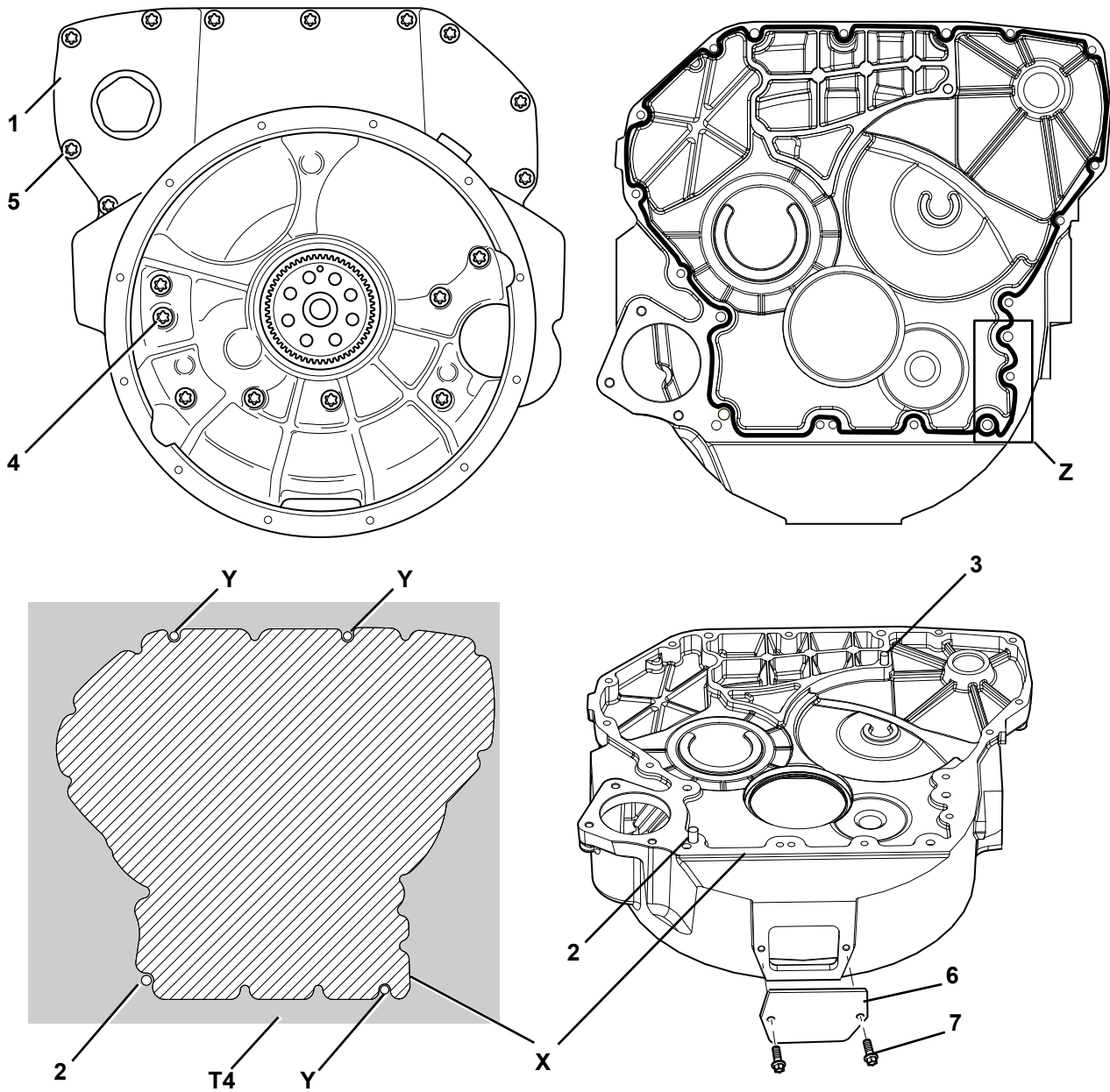
1. This procedure requires service parts. Make sure you have obtained the correct service parts before you start.

2. Remove the flywheel. Refer to (PIL 15-54).
3. Remove the starter motor. Refer to (PIL 15-75).

Removal

1. Remove the flywheel housing fixing bolts and then separate the flywheel housing from the gear case.
2. If required, undo the bolts and remove the access cover.
3. Remove and discard the crankshaft rear oil seal. Take care not to damage the seal bore in the housing.

Figure 210.



- | | |
|--|--|
| <ul style="list-style-type: none"> 1 Flywheel housing 3 Dowel - 10 mm 5 Flywheel housing fixing bolts (x12) M8 7 Access cover fixing bolts (x2) X Flywheel housing mating face T3 Alignment pins | <ul style="list-style-type: none"> 2 Dowel - 12 mm 4 Flywheel housing fixing bolts (x6) M10 6 Access cover Y Fixing point Z Alternative fixing holes T4 Sealant template |
|--|--|

Before Installation

1. Carefully remove all traces of the old sealant compound from the flywheel housing mating faces.

- 2. Use a suitable degreasing agent to clean the inside of the flywheel housing.
- 3. Carefully inspect all gears, bearings and shafts for signs of excessive wear or damage. If wear or damage is evident, the components must be renewed.

Installation

Anaerobic sealant will not start to cure whilst it is open to the atmosphere, however when air is excluded (for instance when the two parts are put together) it will immediately start to harden. Make sure that all the necessary tools, bolts etc. are readily available prior to assembling the components. The parts must be installed and torque tightened within 5min with a maximum permissible time of 15min

1. The installation procedure is the opposite of the removal procedure. Additionally do the following steps.
2. Make sure that all items are clean and free from damage and corrosion.
3. Make sure that the dowels are installed to the mating face of the flywheel housing.
4. Install the sealant template T4 on the housing. Locate the holes in the template, use the dowel and three fixing bolts in the fixing points.
[Special Tool: Template for Sealant Flywheel Housing to Gear Case \(4 Cyl Elec \) \(Qty.: 1\)](#)
5. Use the template T4 as a guide, apply a continuous bead of sealant around the flywheel housing mating face
Length/Dimension/Distance: 1.5mm
 - 5.1. Some engines feature a flywheel housing with a different fixing hole pattern. Use the template to apply the sealant but apply sealant manually in the position shown at Z.
6. Remove the three fixing bolts at positions. Remove the template T4, make sure not to smudge the sealant. Discard the template.
7. Locate the flywheel housing on the alignment pins T3 on the crankcase and install the fixing bolts. Progressively tighten the bolts to the correct torque value.
 - 7.1. Remove the alignment pins to install the last two M10 fixing bolts.
 - 7.2. The parts must be separated, thoroughly cleaned and fresh sealant applied if the parts have not been torque tightened within the maximum time period.
Duration: 15min
8. Install the access cover and use the bolts to secure. Tighten the bolts to the correct torque value. Refer to Table 83.

After Installation

1. Install a new crankshaft rear oil seal.
2. Install the flywheel.
3. Install the starter motor.

Table 83. Torque Values

Item	Nm
4	47
5	24
7	24

09 - Gear Ring

Remove and Install

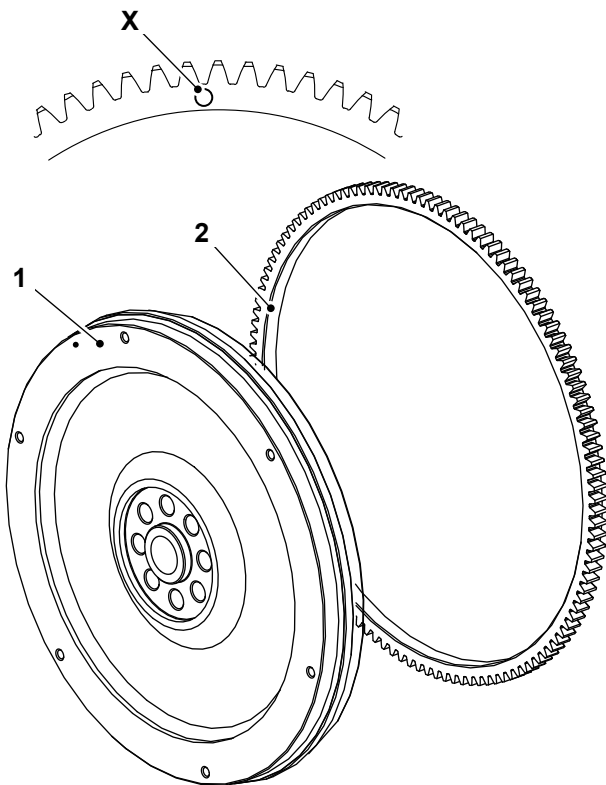
- ▲ CAUTION** Wear eye protection when you drive the gear ring off the flywheel.

If the flywheel gear teeth are damaged or excessively worn, the gear ring can be replaced with a new one.

Before Removal

1. This procedure requires service parts. Make sure you have obtained the correct service parts before you start.
2. Remove the flywheel from the crankshaft hub.

Figure 211.



- 1 Flywheel
- 2 Gear ring
- x Position of hole

Removal

1. Note that the gear teeth have a lead-in chamfer on one side to assist the starter motor pinion to engage. Note which way around the gear ring is installed to make sure that the new gear ring is installed the same way on assembly.
2. Place the flywheel flat on a firm surface. Drill a hole through the gear ring below the root of one

of the gear teeth as shown. Drive a chisel into the adjacent tooth to spread the gear ring apart. Take care not to damage the flywheel or the position sensor target disc.

Installation

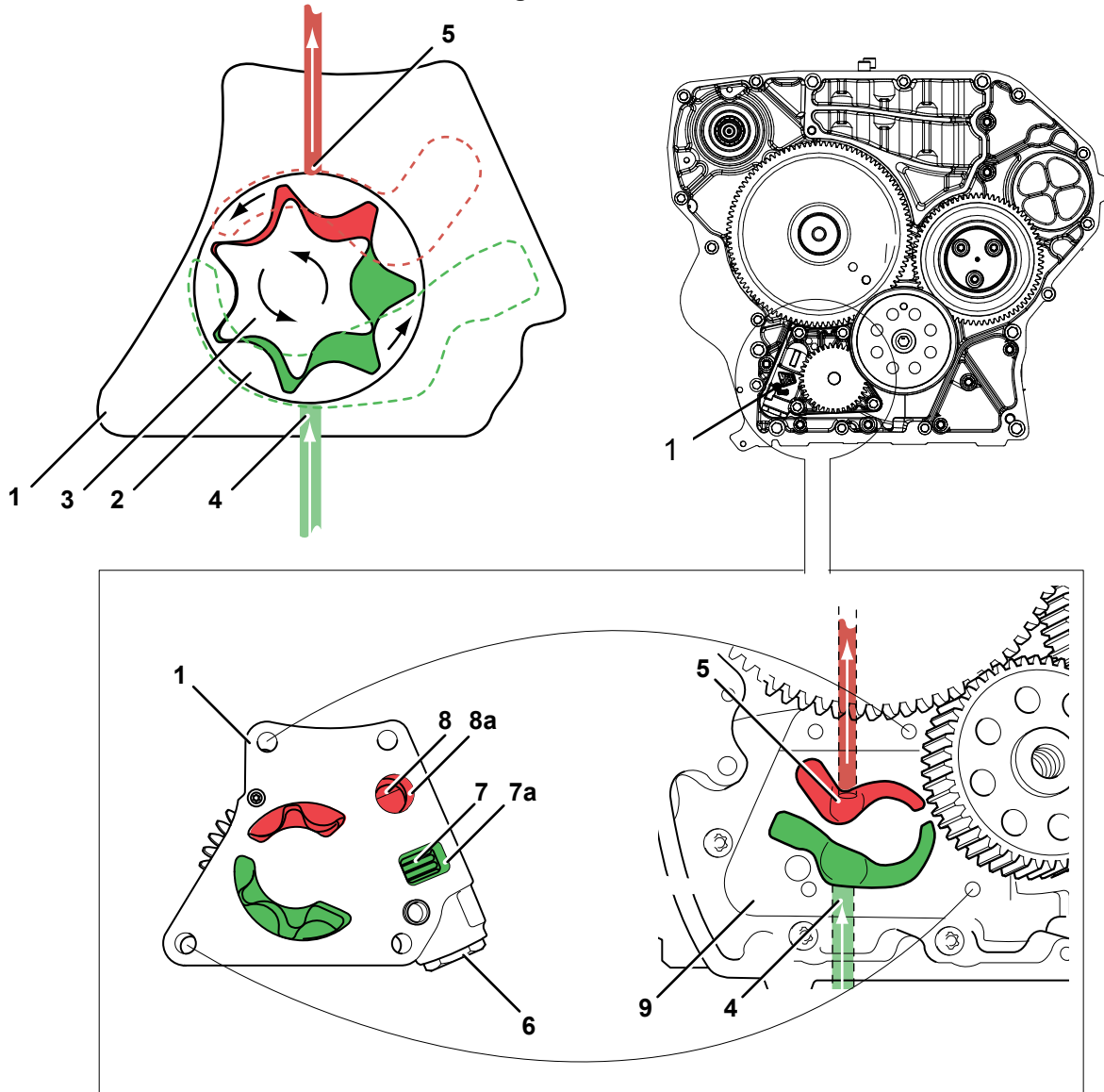
1. Make sure that all items are clean and free from damage and corrosion.
2. Heat up the new gear ring, preferably in an oven to make sure that the heat is applied evenly around the circumference. Do not heat the gear ring above
Temperature: 200°C (391.7°F)
3. When sufficiently heated, install the gear ring into position over the flywheel. Make sure that the gear ring is installed the correct way around.

After Installation

1. Install the flywheel to the crankshaft hub.

Component Identification

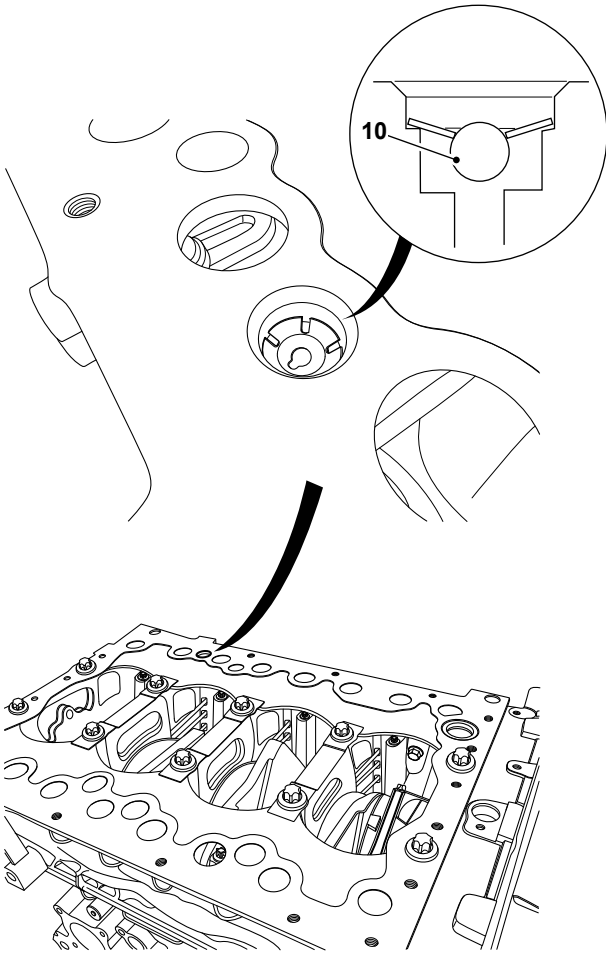
Figure 212.



- 1 Oil pump
- 3 Inner rotor
- 5 Outlet port
- 7 Relief valve spring
- 8 Relief valve spool
- 9 Oil pump connecting ports (engine bed plate)

- 2 Outer rotor
- 4 Inlet port
- 6 Relief valve assembly
- 7a Relief valve port (return to inlet port 4)
- 8a Relief valve pressure port (connected to port 5)

Figure 213.



10 CCV Anti drain back valve

Check (Condition)

1. Check the oil pump internal parts for signs of damage and excessive wear.
2. Check that the engine oil pressure is within the specified tolerance.

[Refer to: PIL 15-00-00.](#)

Remove and Install

Special Tools

Description	Part No.	Qty.
Torque Wrench (10-100Nm)	993/70111	1

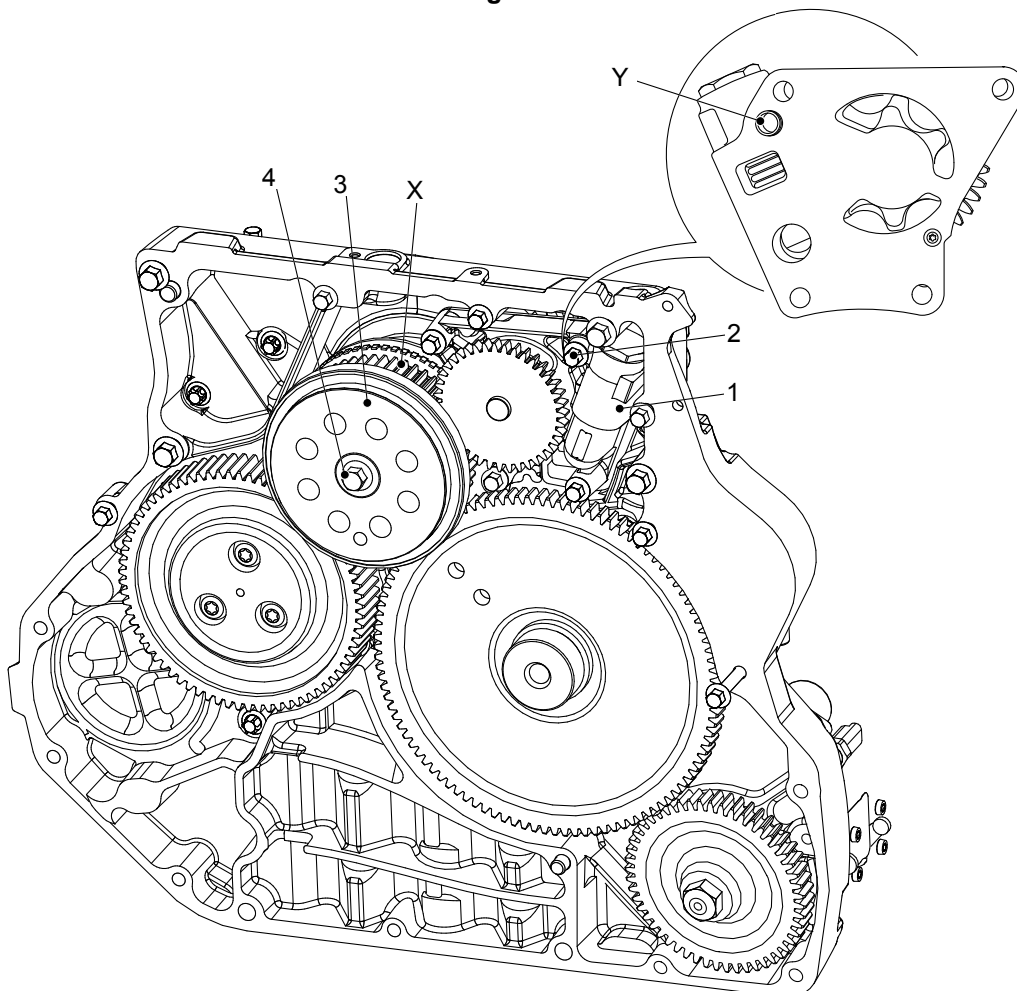
The illustrations show the engine inverted. If the oil pump is being removed prior to crankshaft or camshaft removal, the engine must be inverted. If the oil pump only is being removed (for inspection or renewal) then the engine need not be inverted.

This procedure requires service parts. Make sure you have obtained the correct service parts before you start, refer to Parts Catalogue.

Before Removal

1. Make sure that the engine is safe to work on. If the engine has been running, let it cool before you start the service work.
2. Drain the oil from the engine, refer to (PIL 15-21).
3. Remove the starter motor, refer to (PIL 15-75).
4. Remove the flywheel, refer to (PIL 15-54).
5. Remove the flywheel housing, refer to (PIL 15-54).

Figure 214.



- 1 Oil pump
- 3 Flywheel hub
- X Crankshaft gear

- 2 Oil pump fixing bolts (x4)
- 4 Flywheel hub fixing bolt
- Y Oil pump location dowel

Remove

1. Remove the flywheel hub fixing bolt.
2. Remove the flywheel hub. DO NOT remove the crankshaft gear.
3. Remove the oil pump fixing bolts and lift the oil pump away from the timing gear case.

The oil pump is a non-serviceable item. If the oil pump is damaged or worn it must be renewed as a complete assembly.

Install

1. The installation procedure is the opposite of the removal procedure. Additionally do the following steps.
2. Make sure that all parts are clean and free from damage and corrosion.
3. Lubricate the pump rotor with clean engine oil.
4. Make sure that the oil pump location dowel locates into the hole in the gear timing case.
5. Install the flywheel hub into the crankshaft gear, locating on the dowel. Tighten the bolts to the correct torque value.

Special Tool: Torque Wrench (10-100Nm) (Qty.: 1)

After Replacement

1. Install the flywheel housing, refer to (PIL 15-54).
2. Install the flywheel to the crankshaft hub, refer to (PIL 15-54).
3. Install the starter motor, refer to (PIL 15-75).
4. Fill the engine with engine oil, refer to (PIL 15-21).

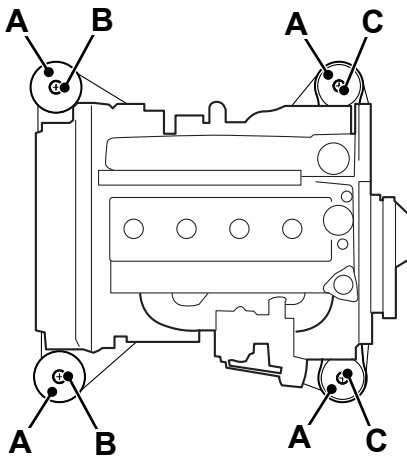
Table 84. Torque Values

Item	Nm
2	24
4	47

Check (Condition)

1. Check the condition of the four engine mountings. Make sure that all the fixing bolts are secure and tightened to the correct torque values.
2. Make sure that the mounting components are free from defects such as splits or cracks. Replace defective components as necessary.

Figure 215.



- A** Engine mountings
- B** Fixing bolts (M20)
- C** Fixing bolts (M16)

Table 85. Torque Values

Item	Nm
B	476
C	244

Remove and Install

Remove

1. Make the machine safe.
2. Make sure that the engine is safe to work on. If the engine has been running, let it cool before you start the service work.
3. Remove the engine compartment cover.
4. Remove the engine.
5. Remove the engine mounts.

Install

1. The installation procedure is the opposite of the removal procedure.

00 - General

Introduction	15-219
Component Identification	15-220
Operation	15-220
Check (Condition)	15-221
Remove and Install	15-221
Disassemble and Assemble	15-223

Introduction

Oil Cooler Assembly

The oil cooler and filter are incorporated in a housing that is bolted to the side of the crankcase. The housing allows transfer of lubricating oil from the crankcase to the oil cooler and filter head.

Some installations have a remote oil filter head. The oil cooler housing incorporates feed and return ports for hose connections to the filter head. A remote oil filter head is used when access to the engine is restricted.

Oil Cooler Matrix

The oil cooler matrix is a non-serviceable part and must not be removed from the housing. The housing/cooler assembly is leak tested during manufacture to minimise the risk of cross contamination of coolant and lubricating oil.

Buy Now



Our support email:

ebooklibonline@outlook.com