

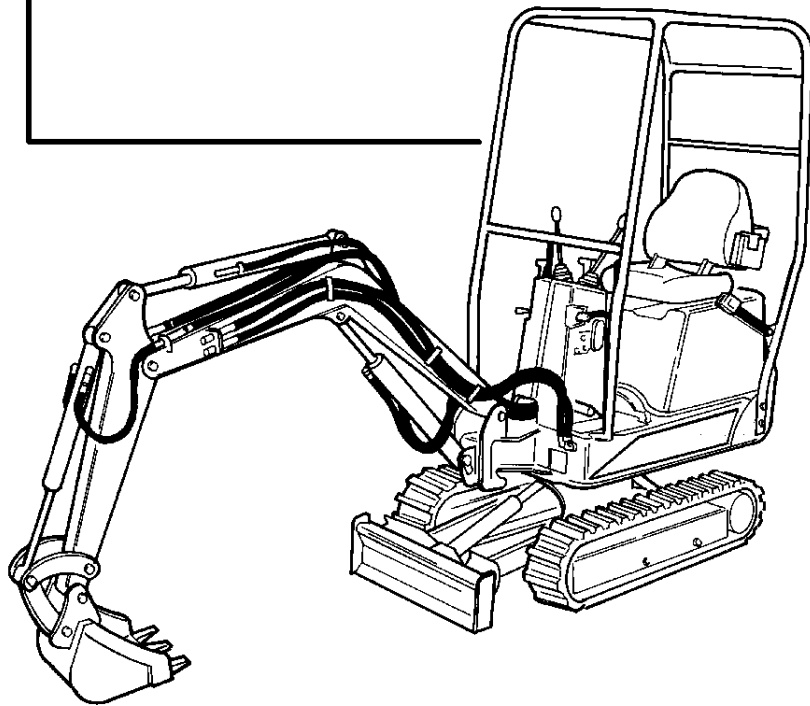
316



Bobcat®

Parts Manual

S/N 5228 11001 & Above
S/N 5229 11001 & Above



316 CONTENTS

MAINTENANCE ITEMS	10-11
MAINTENANCE ITEMS	10-11
WORK EQUIPMENT	12-15
WORK EQUIPMENT	12-15
MAIN FRAME	16-33
SWING FRAME	16-17
FLOOR PLATE	18-19
CONTROL SYSTEM (STEERING)	20-23
CONTROL SYSTEM (TRAVEL)	24-27
CONTROL SYSTEM (THROTTLE)	28-29
TANK UNIT	30-31
ENGINE COVER	32-33
UNDERCARRIAGE	34-37
TRACK FRAME	34-37
ENGINE & ATTACHING PARTS	38-89
ENGINE & ATTACHING PARTS (ENGINE MOUNTS)	38-39
ENGINE & ATTACHING PARTS (FUEL SYSTEM)	40-41
ENGINE & ATTACHING PARTS (COOLING GROUP)	42-43
ENGINE & GASKET KITS	44-45
ROCKER ARM COVER	46-47
ROCKER ARM & VALVES	48-49
CYLINDER HEAD	50-51
OIL PAN	52-53
GEARCASE	54-55
CRANKCASE	56-57
PISTON & CRANKSHAFT	58-59
MAIN BEARING CASE	60-61
CAMSHAFT	62-63
FUEL CAMSHAFT	64-65
GOVERNOR GROUP	66-67
SPEED CONTROL & STOP LEVER	68-69
WATER PUMP	70-71
WATER FLANGE & THERMOSTAT	72-73
MANIFOLDS	74-75
FUEL & INJECTION PUMP	76-77
INJECTION PUMP	78-79
INJECTOR NOZZLES	80-81
MOZZLE HOLDER	82-85
LOWER GASKET KIT	86-87
UPPER GASKET KIT	88-89
HYDRAULIC & HYDROSTATIC SYSTEM	90-129
HYDRAULIC CIRCUITRY (WORK EQUIPMENT)	90-91
HYDRAULIC CIRCUITRY (AUXILIARY)	92-93
HYDROSTATIC CIRCUITRY (UPPER FRAME)	94-101
HYDROSTATIC CIRCUITRY (TRAVEL)	102-103
CONTROL VALVE	104-107
BOOM CYLINDER	108-109
ARM CYLINDER	110-111
BUCKET CYLINDER	112-113
SWING CYLINDER	114-115
DOZER CYLINDER	116-117

316 CONTENTS (Cont'd)

HYDRAULIC & HYDROSTATIC SYSTEM (CONT'D)	90-129
EXTENSION CYLINDER	118-119
SWIVEL JOINT	120-121
PUMP	122-123
TRAVEL MOTOR	124-127
TURNING MOTOR	128-129
ELECTRICAL SYSTEM	130-131
ELECTRICAL CIRCUITRY	130-131
ACCESSORIES & OPTIONS	132-143
DECALS (ESA)	132-133
DECALS (NA)	134-135
BUCKET	136-137
CANOPY	138-139
CONTROL VALVE (J/D)	140-141
HANDBOOK POCKET	142-143
BULK ITEMS	144-145
NUMERICAL INDEX	146-164
NUMERICAL INDEX	146-164

GENERAL INFORMATION

When using the machine serial number, use the complete number. When Serial Numbers do not appear below the page heading, parts information applies to all work machines.

Some Serial Number breaks are not available at time of printing. These are listed as & Below or & Above.

The number shown in the quantity column in this manual is the number of parts needed for the illustration on the page. For some parts an "x" will be shown in the quantity column. This "x" indicates that the quantity to be used is "As Needed".

When references L.H. and R.H. are used in this manual, it is done from the operator's seat in the forward operating position.

To find the size and kind of bolt use the Bobcat Standard Microfiche (P/N 6566077).

Some of the illustrations and information found in this parts manual were supplied to Bobcat Company by machine component companies.

Bobcat
 COMPACT EXCAVATOR MODEL 316
 Product Identification Number
 522811001
 WEIGHT [] LBS [] KG
 Bobcat Company
 ASSEMBLED IN JAPAN FOR West Fargo, ND USA
 www.bobcat.com

DOMESTIC

Bobcat
 COMPACT EXCAVATOR MODEL 316
 Product Identification Number
 522911001
 POWER [] kW [] RPM
 MASS [] kg [] YEAR OF CONSTRUCTION
 Bobcat Company
 ASSEMBLED IN JAPAN FOR West Fargo, ND USA
 www.bobcat.com

EUROPEAN

ABBREVIATIONS & SYMBOLS

- SALES = Order from Gwinner Sales Department
 NSS = Not Serviced Separately
 NAP = Not Available as Parts
 * = Changed or Added Sections, Pages or Part Number

Disposition Code Definition (Found in the Remarks Column)

- [A] = Use Up
 [B] = Use Up on Other Application (See PNI)
 [C] = File PDR Report With Bobcat Parts Sales
 [D] = Part Number Error

Explications en francais	Grid Nb	4
Erklärungen auf deutsch	Grid Nb	5
Spiegazioni in italiano	Grid Nb	6
Explicaciones en espanol	Grid Nb	7
Verklaring in het Nederlands	Grid Nb	8

NOTE D'INFORMATION

Pour toute référence au numéro de série de l'engin, toujours donner le numéro complet.

Le chiffré apparaissant dans la colonne des quantités de ce manuel représentent le nombre de pièces nécessaires pour l'illustration reprise sur la page. Dans certains cas, on lira un "x" dans la colonne des quantités. Cet "x" indique que la quantité nécessaire est "selon besoin".

Pour toute référence vers la GAUCHE ou la DROITE dans ce manuel, considérer que la personne se trouve assise dans le siège de l'opérateur, en position de fonctionnement en marche avant.

Certaines illustrations et informations reprises dans ce manuel de pièces de rechange ont été fournies à Bobcat par des fabricants de composants.

ABREVIATIONS & SYMBOLES

SALES	= Commander au Service Ventes à Bruxelles
NSS	= Pas vendu séparément
NAP	= Non disponible comme pièce de rechange
*	= Chapitre, page ou numéro de pièce modifié ou supplémentaire
BTI	= Bobcat Technical Information Bulletin : voir à la fin de la microfiché du modèle concerné ou la microfiche générale reprenant l'ensemble des "BTI".
was 6535403	= était avant 6535403
adj. (adjustment)	= réglage
Assembly	= ensemble
available W/Ref.	= disponible avec réf.
bulk/sold per foot	= en vrac/vendu par pied
does not include	= ne comprend pas
included with	= compris dans
I.D.	= D.I. (diamètre intérieur)
O.D.	= D.E. (diamètre extérieur)
not in kit	= pas en kit
W/ - WO/	= inclus/ - non inclus/
Qty	= quantité requise
see page/ref.	= voir page/réf.
used with ref/	= utilisé avec réf.
0,05 inch thickness	= 0,05 pouce d'épaisseur (un pouce = 25.4 mm)
weld on	= à souder

ALLGEMEINE INFORMATIONEN

Bei Angabe der Maschinen-Seriennummer stets die komplette Nummer angeben.

Bei der in der Mengenspalte (Anzahl) in diesem Handbuch angegebenen Zahl handelt es sich um die Anzahl von Teilen, die für die Abbildung auf der betreffenden Seite benötigt werden. Bei manchen Teilen in der Mengenspalte ist ein "x" angegeben. Dieses "x" weist darauf hin, dass sich die Anzahl der verwendeten Teile auf den "Bedarf" bezieht.

Bei Verwendung der Seitenangaben links und rechts in diesem Handbuch gelten diese für die Blickrichtung vom Fahrersitz aus, und zwar in Vorwärts-Betriebsrichtung.

Einige der in diesem Ersatzteilhandbuch aufgeführten Abbildungen und Informationen wurden der Bobcat von den Herstellern von Maschinenbauteilen zur Verfügung gestellt.

ABKÜRZUNGEN UND SYMBOLE

SALES	= Bestellung bei der Verkaufsabteilung in Brüssel
NSS	= Nicht einzeln erhältlich
NAP	= Nicht als Ersatzteil erhältlich
*	= Geänderte oder hinzugefügte Abschnitte, Seiten oder Teilenummern
BTI	= Bobcat Technical Information Bulletin : Siehe am Ende der Mikrokarte des jeweiligen Modells oder der allgemeinen Mikrokarte der BTI.
was 6535403	= War 6535403
adj.	= Einstellung
Assembly	= Baugruppe
available W/Ref.	= erhältlich mit der Referenz
bulk/sold per foot	= Mengenabnahme / Verkauf pro Fuss
does not include	= beinhaltet nicht
included with	= enthalten in
I.D.	= Innendurchmesser
O.D.	= Aussendurchmesser
not in kit	= nicht in Bausatz
W/ - WO/	= mit/ - ohne/
Qty	= Anzahl
see page/ref.	= Siehe Seite / Referenz
used with ref.	= verwendet mit Referenz
0.05 inch thickness	= Dicke : 0.05 Zoll (ein Zoll = 25.4 mm)
weld on	= anschweißen

INFORMAZIONI GENERALI

Quando si usa il numero di serie della macchina usare il numero completo.

Il numero mostrato nella colonna della quantità di questo manuale corrisponde al numero di componenti necessari per l'illustrazione della pagina. Per alcuni componenti appare "X" nella colonna delle quantità. Questa "X" indica che la quantità da usare è "come necessario".

See in questo manuale si fa riferimento alla parte destra o sinistra, si intende dal sedile dell'operatore nella posizione in avanti di funzionamento.

Alcune delle illustrazioni e informazioni trovate in questo manuale di componenti sono state fornite alla Bobcat da società di componenti di macchine.

SIMBOLI E ABBREVIAZIONI

SALES	= Ordinare al servizio vendite di Bruxelles
NSS	= Non vendute separatamente
NAP	= Non disponibile come componente
*	= Sezioni, pagine o numeri di componente cambiati o aggiunti
BTI	= (Bobcat Technical information) Ved. al termine del microfiche del modello relativo oppure microfiche generale
was 6535403	= era 6535403
adj. (adjustment)	= regol. (regolazione)
Assembly	= Complessivo
available W/ref.	= disponibile con rif.
bulk/sold per foot	= alla rinfusa/venduto al piede
does not include	= non comprende
Included with	= compreso con
I.D.	= d. i.
O.D.	= d. e.
not in kit	= non fa parte del kit
W/ - WO/	= con - senza
Qty	= Qtà
see page/ref	= ved. pagina/rif.
used with ref.	= usato con il rif.
0,05 inch thickness	= spessore 0,05 pollici (un pollice = 25,4 mm)
weld on	= a saldare

INFORMACION GENERAL

Al utilizar el número de serie de la máquina, debe emplearse el número completo.

El número que figura en la columna de "Unidades" en este manual es el número de piezas que se necesitan para la ilustración que consta en la página. En algunas piezas aparece una "x" en la columna de "Unidades". Esta "x" indica que las unidades a utilizar son "según sea necesario".

Cuando se empleen las referencias izq. y dcha., éstas se entienden mirando desde el asiento del conductor, en posición de marcha adelante.

Algunas de las ilustraciones y la información que figuran en este manual de piezas han sido facilitadas a Bobcat por empresas de componentes de máquinas.

ABREVIATURAS Y SIMBOLOS

VENTAS	= Pedido al Departamento de Ventas de Bruselas
NSS	= No se vende por separado
NAP	= No disponible como pieza de repuesto
*	= Secciones, páginas o referencias modificadas o añadidas
BTI	= (Bobcat Technical Information) Ver al final de la microficha del modelo afectado o en la microficha general "Boletín de Información Técnica Bobcat".
was 6535403	= era anteriormente el 6535403
adj. (adjustment)	= ajuste
assembly	= conjunto
available W/Ref.	= disponible con la ref.
bulk/sold per foot	= a granel/vendido por pies
does not include	= no incluye
included with	= incluido en
I.D.	= diámetro interior
O.D.	= diámetro exterior
not in kit	= no en el kit
W/ - WO/	= con/ - sin
Qty	= Unidades
see page /ref.	= ver página/ref.
used with ref.	= empleado con la ref.
0,05 inch thickness	= 0,05 pulgadas de espesor (1 pulgada = 25,4 mm)
weld on	= debe ser soldado

ALGEMENE INFORMATIE

Als u het serienummer van de machine gebruikt, geef dan het gehele serienummer.

Het cijfer dat voorkomt in de kolom "Aantal", in deze handleiding, is het aantal onderdelen dat nodig is van de illustratie op de pagina. Voor sommige onderdelen staat er een "x" in de kolom "Aantal". Deze "x" betekent dat er een aantal "zoals nodig" vereist is.

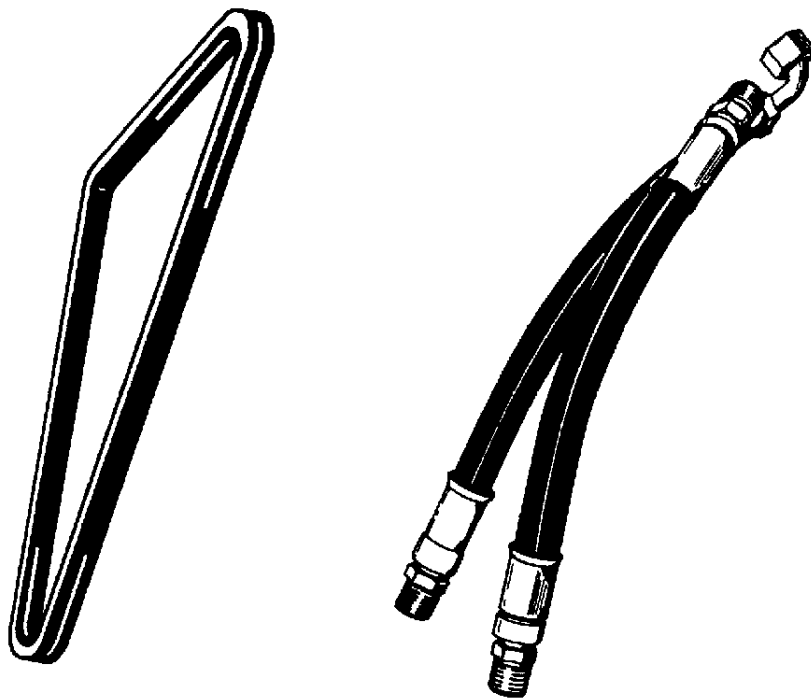
Wanneer er in deze handleiding naar "links" en naar "rechts" gerefereerd wordt, moet dit verstaan worden voor een bestuurder die in de bestuurdersstoel zit in de voorwaartse bedrijfsstand.

Sommige van de illustraties en informatie in deze onderdelen-handleiding werden door firma's van machine-componenten geleverd aan Bobcat.

AFKORTINGEN EN SYMBOLEN

SALES	= Bestellen bij de Verkoopafdeling te Brussel
NSS	= Niet afzonderlijk te verkrijgen
NAP	= Niet beschikbaar als onderdeel
*	= Gewijzigde of toegevoegde paragrafen, pagina's of onderdeelnummers
BTI	= Bobcat Technical Information Bulletin : Zie einde van de microfiche van het desbetreffende model of einde van de algemene microfiche die het geheel van alle "BTI" herneemt.
was 6535403	= was vroeger 6535403
adj. (adjustment)	= afstelling
Assembly	= geheel
available W/Ref.	= beschikbaar met ref.
bulk/sold per foot	= bulk/aan de meter verkocht
does not include	= bevat niet
includes with	= is bevat in
I.D.	= ϕ inw. (inwendige diameter)
O.D.	= ϕ uitw. (uitwendige diameter)
not in kit	= niet in de kit
W/ - WO/	= met/ - zonder/
Qty	= vereiste aantal
see page/ref.	= zie pagina/ref.
used with ref/	= gebruikt met ref.
0,05 inch thickness	= 0.05 inch dik (een inch = 25.4 mm)
weld on	= te lassen

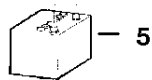
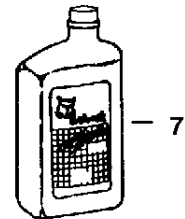
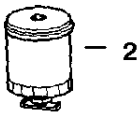
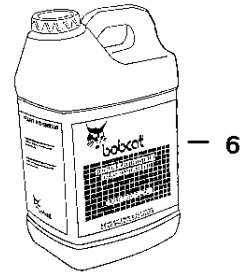
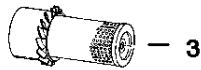
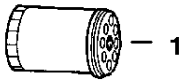
**Use only Bobcat belts and hoses
to maintain maximum service life.**



Available from Bobcat Parts.



**MAINTENANCE ITEMS
MODEL 316**

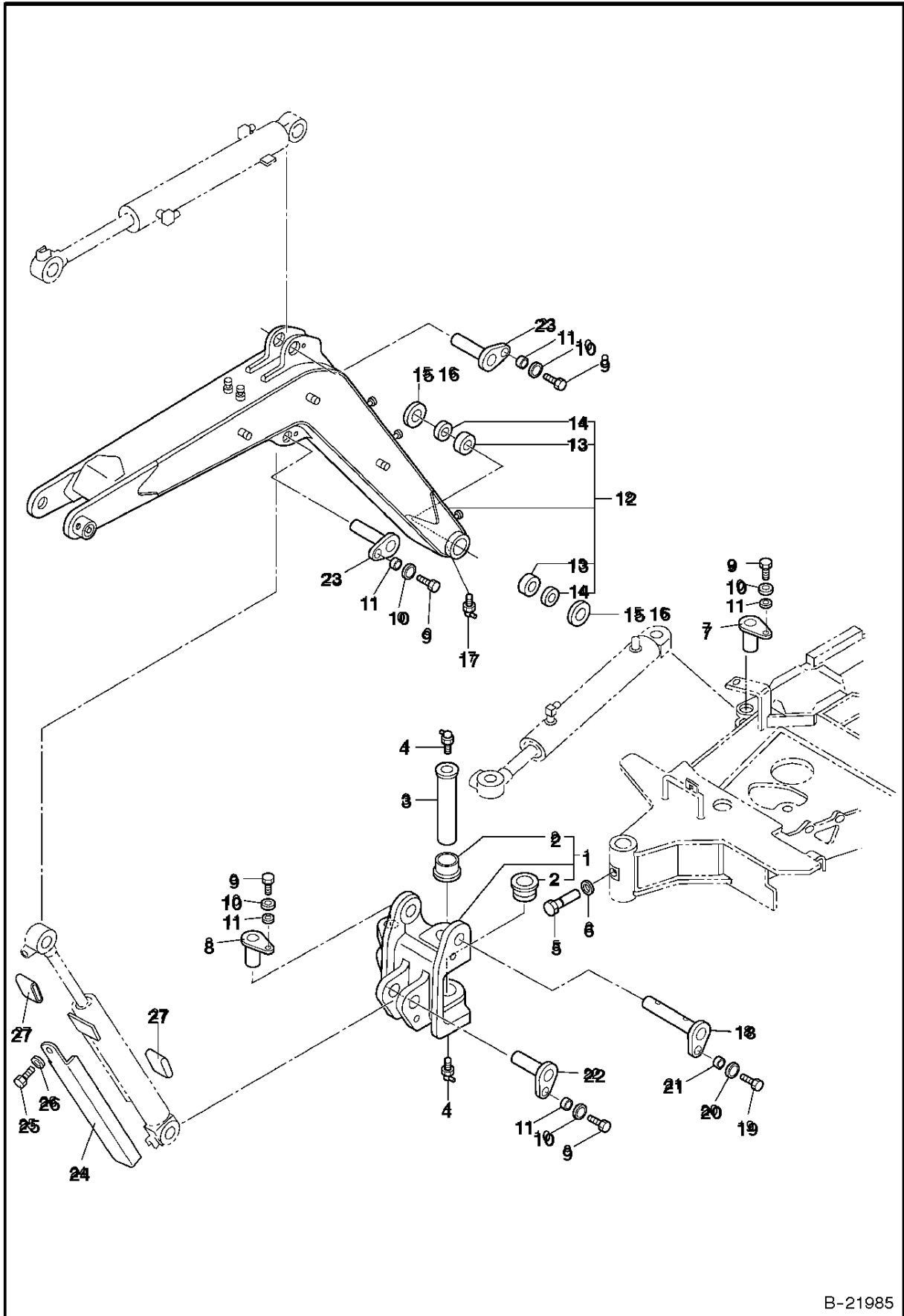


B-22030

MAINTENANCE ITEMS

Ref.N°	Part N°	Description	Remarks	Serial N°	Qty.
1	6671057	CARTRIDGE	engine - See Page ENGINE & ATTACHING PARTS(1)		x
2	6667352	FILTER	See Page TRACK FRAME(1)		x
3	6673752	ELEMENT	outer - See Page ENGINE & ATTACHING PARTS(2)		x
4	6677652	FILTER	Hydrostatic - 10 micron - See Page HYDROSTATIC CIRCUITRY(2)		x
5	6674687	BATTERY	See Page ELECTRICAL CIRCUITRY(1)		x
6	6563328	BLACK GOLD	Hyd./Hydro. Fluid - (2) 2.5 Gal. - See Page BULK ITEMS(2)		x
6	6722344	BLACK GOLD	Hyd./Hydro. - (5 Gal.) - See Page BULK ITEMS(2)		x
6	6563330	BLACK GOLD	55 Gallon Drum - See Page BULK ITEMS(2)		x
7	6657301	MOTOR OIL	10W30 CE/SG - 1 Qt. - See Page BULK ITEMS(2)		x
7	6724557	MOTOR OIL	10W30 CE/SG - 1 Gal. - See Page BULK ITEMS(2)		x
7	6674205	MOTOR OIL	10W30 CE/SG - 2.5 Gal. - See Page BULK ITEMS(2)		x
7	6657299	MOTOR OIL	15W40 CE/SG - 1 Qt. - See Page BULK ITEMS(2)		x
7	6724558	MOTOR OIL	15W40 CE/SG - 1 Gal. - See Page BULK ITEMS(2)		x
7	6674204	MOTOR OIL	15W40 CE/SG - 2.5 Gal. - See Page BULK ITEMS(2)		x
7	6657303	MOTOR OIL	30 CE/SG - 1 Qt. - See Page BULK ITEMS(2)		x
7	6724559	MOTOR OIL	30 CE/SG - 1 Gal. - See Page BULK ITEMS(2)		x
7	6674206	MOTOR OIL	30 CE/SG -2.5 Gal. - See Page BULK ITEMS(2)		x

WORK EQUIPMENT



B-21985

Buy Now



Our support email:

ebooklibonline@outlook.com