

# BOMAG

## Operating instructions Maintenance instructions

*This manual is  
in accordance with  
product liability laws  
and safety regulations*

---

**BW 211 D-4 / BW 211 PD-4**

---

S/N 101 582 41 . . . .



---

**Single drum roller**

---

If the machine is equipped with a battery :

**CALIFORNIA**

**Proposition 65 Warning**

Battery posts, terminals and related accessories contain lead and lead compounds, chemicals known to the State of California to cause cancer and birth defects or other reproductive harm.

**Wash hands after handling.**

If the machine is equipped with a diesel engine :

**CALIFORNIA**

**Proposition 65 Warning**

The engine exhaust and some of its constituents are known to the state of California to cause cancer, birth defects, and other reproductive harm.

**BOMAG machines are products from the wide range of BOMAG compaction equipment.**

**BOMAG's vast experience in connection with state-of-the-art production and testing methods, such as lifetime tests of all important components and highest quality demands guarantee maximum reliability of your machine.**

This manual comprises:

- Safety regulations
- Operating instructions
- Maintenance instructions
- Trouble shooting

Using these instructions will

- help you to become familiar with the machine.
- avoid malfunctions caused by unprofessional operation.

Compliance with the maintenance instructions will

- enhance the reliability of the machine on construction sites,
- prolong the lifetime of the machine,
- reduce repair costs and downtimes.

BOMAG GmbH will not assume liability for the function of the machine

- if it is handled in a way not complying with the usual modes of use,
- if it is used for purposes other than those mentioned in these instructions.

No warranty claims can be lodged in case of damage resulting from

- operating errors,
- insufficient maintenance and
- wrong fuels and lubricants.

**Please note!**

**With this machine "CE" conformity is only achieved with the corresponding optional equipment.**

This manual was written for operators and maintenance personnel on construction sites.

Always keep this manual close at hand, e.g. in the tool compartment of the machine or in a specially provided container. These operating and maintenance instructions are part of the machine.

You should only operate the machine after you have been instructed and in compliance with these instructions.

Strictly observe the safety regulations.

Please observe also the guidelines of the Civil Engineering Liability Association "Safety Rules for the Operation of Road Rollers and Soil Compactors" and all relevant accident prevention regulations.

**For your own personal safety you should only use original spare parts from BOMAG.**

**In the course of technical development we reserve the right for technical modifications without prior notification.**

These operating and maintenance instructions are also available in other languages.

Apart from that, the spare parts catalogue is available from your BOMAG dealer against the serial number of your machine.

Your BOMAG dealer will also supply you with information about the correct use of our machines in soil and asphalt construction.

The above notes do not constitute an extension of the warranty and liability conditions specified in the general terms of business of BOMAG GmbH.

We wish you successful work with your BOMAG machine.

BOMAG GmbH

Printed in Germany

Copyright by BOMAG

## Foreword

### Please fill in

.....

Machine type (Fig. 1)

.....

Serial-number (Fig. 1 and 2)

.....

Engine type (Fig. 3)

.....

Engine number (Fig. 3)

### **i** Note

*Supplement the above data together with the commissioning protocol.*

*During commissioning our organisation will instruct you in the operation and maintenance of the machine.*

*Please observe strictly the safety regulations and all notes on risks and dangers!*

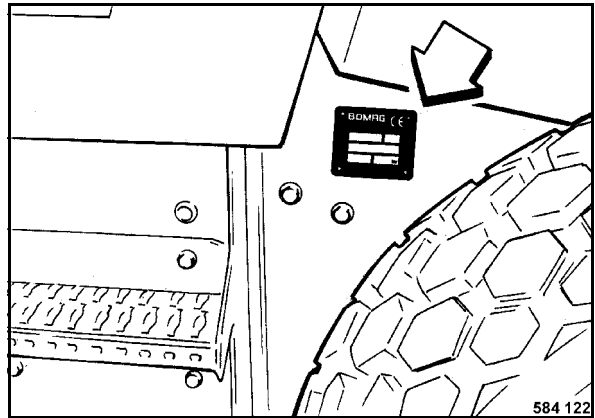


Fig. 1

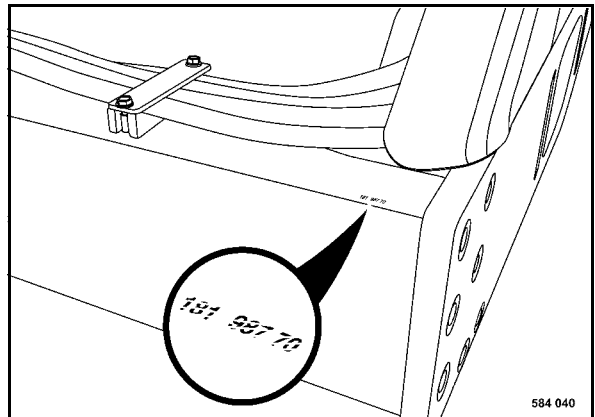


Fig. 2

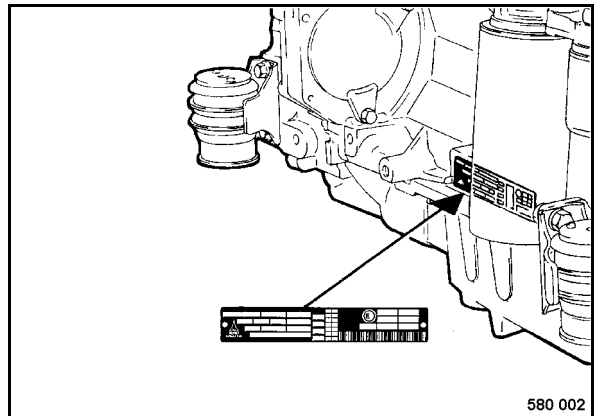


Fig. 3

<b>Technical Data</b>	<b>7</b>
<b>Safety regulations</b>	<b>11</b>
<b>Indicators and Controls</b>	<b>19</b>
3.1 General notes	22
3.2 Description of indicators and control elements	22
<b>Operation</b>	<b>31</b>
4.1 General notes	32
4.2 Tests before starting to operate	32
4.3 Starting the engine	33
4.4 Starting with jump wires	35
4.5 Driving the machine	35
4.6 Switching the vibration on and off	37
4.7 Operating the parking brake, stopping the machine	38
4.8 Shutting the engine down	39
4.9 Emergency exit	40
4.10 Adjusting the steering wheel	40
4.11 Adjusting the seat	41
4.12 Operating the hood	41
4.13 Towing in case of an engine failure	43
4.14 Transport	45
<b>Maintenance</b>	<b>47</b>
5.1 General notes on maintenance	48
5.2 Fuels and lubricants	49
5.3 Table of fuels and lubricants	52
5.4 Running-in instructions	53
5.5 Maintenance chart	54
5.6 Check the engine oil level	57
5.7 Check, clean the water separator	57
5.8 Check the fuel level	58
5.9 Checking the hydraulic oil level	59
5.10 Check the coolant level	59
5.11 Checking the dust separator on the oil bath air filter	60
5.12 Checking the tire pressure	61
5.13 Clean the cooling fins on engine and hydraulic oil cooler	61
5.14 Check the oil level in the drive axle	62
5.15 Checking the oil level in left/right wheel hubs	63
5.16 Check the oil level in the vibration bearings	63
5.17 Changing engine oil and oil filter cartridges	64
5.18 Change the fuel filter cartridge	65
5.19 Draining the sludge from the fuel tank	66
5.20 Service the battery	67

## Table of Contents

5.21	Change the fuel pre-filter cartridge	68
5.22	Checking, replacing the refrigerant compressor V-belt	69
5.23	Service the air conditioning	70
5.24	Check, adjust the valve clearance	73
5.25	Checking / replacing the ribbed V-belt	75
5.26	Check the engine mounts	76
5.27	Change the oil in the drive axle	76
5.28	Changing the oil in the wheel hubs	77
5.29	Change the oil in the vibration bearings	78
5.30	Retighten the fastening of the axle on the frame	79
5.31	Tightening the wheel nuts	80
5.32	Check the ROPS	80
5.33	Cleaning the oil bath air filter	81
5.34	Changing hydraulic oil and breather filter	82
5.35	Changing the hydraulic oil filter	83
5.36	Changing the coolant	84
5.37	Checking the injection valves	86
5.38	Service the combustion air filter	87
5.39	Adjust the scrapers	90
5.40	Adjust the parking brake	91
5.41	Changing the tires	92
5.42	Change the fresh air filter in the cabin	93
5.43	Tightening torques	93
5.44	Engine conservation	94
	<b>Trouble shooting</b>	<b>95</b>
6.1	General notes	96
6.2	Engine	97

## 1 Technical Data

## Technical Data

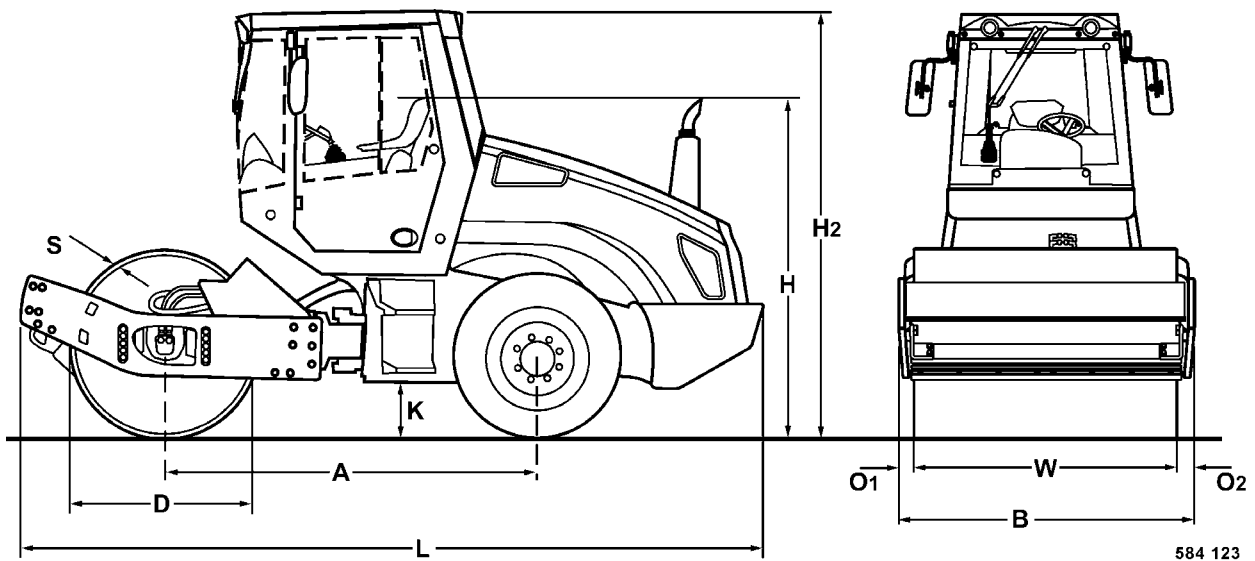


Fig. 4

Dimensions in mm	A	B	D	H	H2	K	L	O1	O2	S	W
<b>BW 211 D-4</b>	2960	2250	1500	2268	2972	490	5808	60	60	25	2130
<b>BW 211 PD-4</b>	2960	2250	1480	2268	2972	490	5808	60	60	25	2130

\*

**BW 211 D-4**

**BW 211 PD-4**

### Weights

Operating weight (CECE) with ROPS and cabin	kg	10950	11930
Axle load, drum (CECE)	kg	6280	7260
Rear axle load (CECE)	kg	4670	4670
Static linear load	kg/cm	29,5	-

### Travel characteristics

Travel speed (1)	km/h	0 ... 5	0 ... 5
Travel speed (2)	km/h	0 ... 6	0 ... 6
Travel speed (3)	km/h	0 ... 9	0 ... 9
Travel speed (4)	km/h	0 ... 13,5	0 ... 13,5
Max. gradability (depending on soil)	%	47	47

### Engine

Engine manufacturer		Deutz	Deutz
Type		BF4M 2012C	BF4M 2012C
Cooling		Water	Water
Number of cylinders		4	4
Rated power DIN ISO 3046	kW	98	98



*		<b>BW 211 D-4</b>	<b>BW 211 PD-4</b>
Rated speed	rpm	2300	2300
Fuel		Diesel	Diesel
Electrical equipment	V	12	12
Drive system		hydrostatic	hydrostatic
Driven axles		2	2
<b>Brakes</b>			
Service brake		hydrostatic	hydrostatic
Parking brake		hydr.-mech.	hydr.-mech.
<b>Steering</b>			
Type of steering		articulated	articulated
Steering operation		hydrostatic	hydrostatic
<b>Vibration</b>			
Vibrating drum		1	1
Drive system		hydrostatic	hydrostatic
Frequency	Hz	30/36	30/36
Amplitude	mm	1,8/0,9	1,64/0,82
<b>Tires</b>			
Tire size		23.1/18-26/TL-8PR AWT	23.1-26/12TL R1
Air pressure	bar	1,1	1,4
<b>Filling capacities</b>			
Engine	Litres	10	10
Fuel	Litres	340	340
Hydraulic oil	Litres	60	60
Coolant	Litres	16	16

\* The right for technical modifications remains reserved

**Buy Now**



Our support email:

[ebooklibonline@outlook.com](mailto:ebooklibonline@outlook.com)