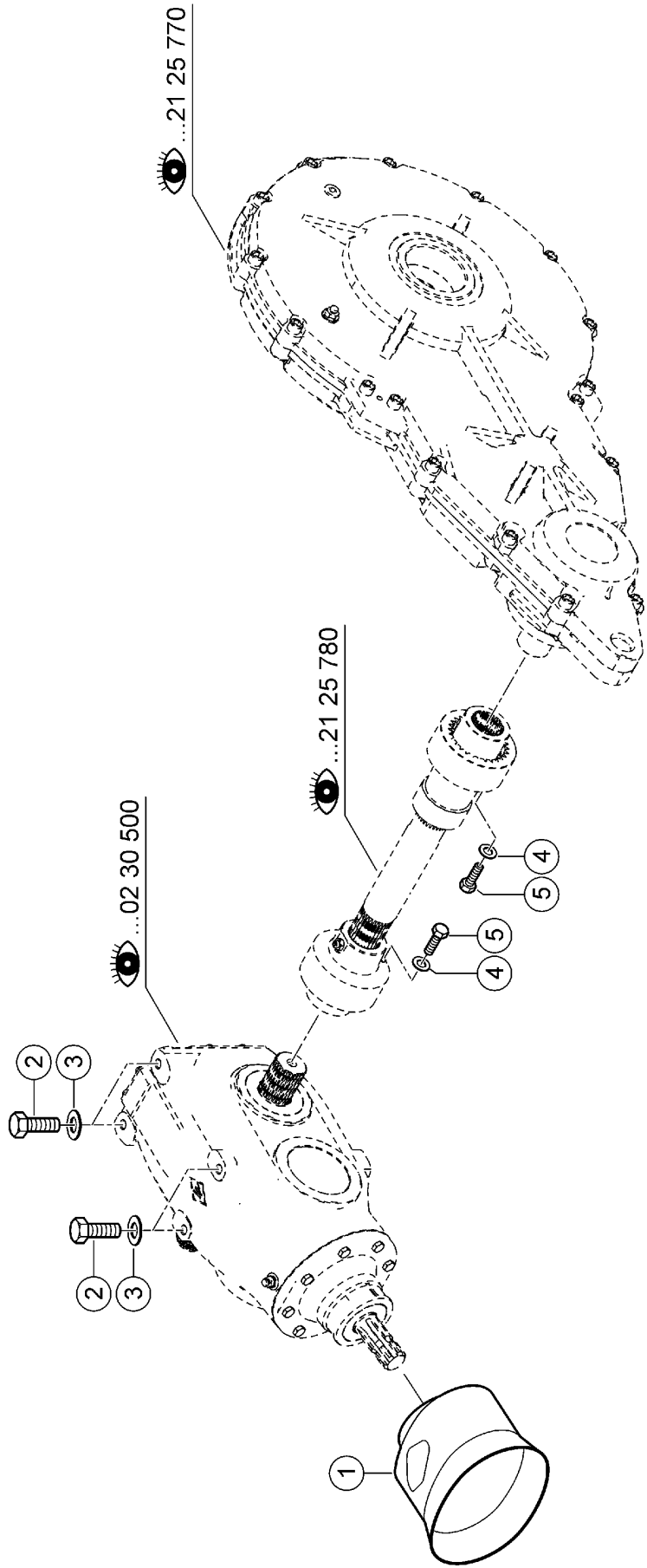


500 MAIN GEARBOX

Pos.	Part No.	Description	Dimension	Quantity	Conditions
1	00 1391 160 0	MAIN GEARBOX	1000 U/MIN	1	
2	00 0920 116 0	HOUSING		1	
3	00 0151 293 0	COVER		1	
4	00 0239 387 0	CONTACT WASHER	A8-8,2X18X1,4	12	
5	00 0236 200 0	HEXAGON HEAD BOLT	M8X20	12	
6	00 0242 212 0	SOCKET HEAD SCREW	M 6X 10	2	
7	00 0137 356 0	COVER	GT 41	1	
8	00 0920 123 0	BREATHER PLUG	0,03-0,05BAR-M16X1,5-TYP	1	
9	00 0238 183 0	SEALING RING	A16 X20	3	
10	00 0920 121 0	BEVEL GEAR SET	I=2,23;1	1	
11	00 0215 148 0	TA.ROLLER BEARING	33211/Q	1	
12	00 0235 989 0	TA.ROLLER BEARING	30210 - 50X90X21,75	1	
13	00 0179 845 0	SLOTTED NUT	M50X1,5	1	
14	00 0212 633 0	ROTARY SHAFT SEAL	AS 45X90X10	1	
15	00 0940 636 0	SHIM	DICKE 0,19	1	
16	00 0939 671 0	HUB		1	
17	00 0237 572 0	HEXAGON HEAD BOLT	M12X35	8	
18	00 0933 644 0	MAGNETIC FILTER BOLT	M16X1,5-PM	1	
19	00 0933 643 0	SCREW PLUG	M16X1,5	1	
20	00 0234 830 0	TA.ROLLER BEARING	30211	1	
21	00 0243 047 0	CIRCLIP	78X2,5	2	
22	00 0920 118 0	SHAFT		1	
23	00 0920 122 0	SPUR GEAR	Z=33	1	
24	00 0243 661 0	TA.ROLLER BEARING	30212A	1	
25	00 0211 966 0	SHIM	100X110X1	1	
25	00 0211 965 0	SHIM	100X110X0,5	1	
25	00 0211 964 0	SHIM	100X110X0,3	1	
25	00 0211 963 0	SHIM	100X110X0,1	2	
26	00 0235 194 0	CIRCLIP	110X4	1	
27	00 0214 586 0	SHAFT SEAL	AS 60X110X10	1	
28	00 0213 902 0	SHAFT SEAL	AS 55X100X10	1	
29	00 0235 193 0	CIRCLIP	100X3	1	
30	00 0218 760 0	SHIM	90X100X1	1	
30	00 0213 898 0	SHIM	90X100X0,50	1	
30	00 0213 899 0	SHIM	90X100X0,3	1	
30	00 0213 900 0	SHIM	90X100X0,10	2	
31	00 0920 119 0	SPUR GEAR SHAFT	Z=13	1	
32	00 0243 675 0	TA.ROLLER BEARING	32213-65X120X32,75	1	
33	00 0214 182 0	SHIM	110X120X1,0	1	
33	00 0214 181 0	SHIM	ERS.D.214182 110X120X0,5 ERS.D. 21418	1	
33	00 0214 180 0	SHIM	110X120X0,3 ERS.D. 21418	1	
33	00 0214 179 0	SHIM	110X120X0,1 ERS.D. 21417	3	
34	00 0243 063 0	CIRCLIP	120X4	1	
35	00 0213 903 0	LOCKING-COVER	VK 120X12	1	
36	00 0138 840 0	LOCK CAP	130X12	1	
37	00 0243 065 0	CIRCLIP	TEILGUMMIERT 130X4	1	
38	00 0215 931 0	SHIM	112X130X1	1	
38	00 0215 798 1	SHIM	112X130X0,5	1	
38	00 0212 687 1	SHIM	112X130X0,3	1	
38	00 0212 686 1	SHIM	112X130X0,1	2	

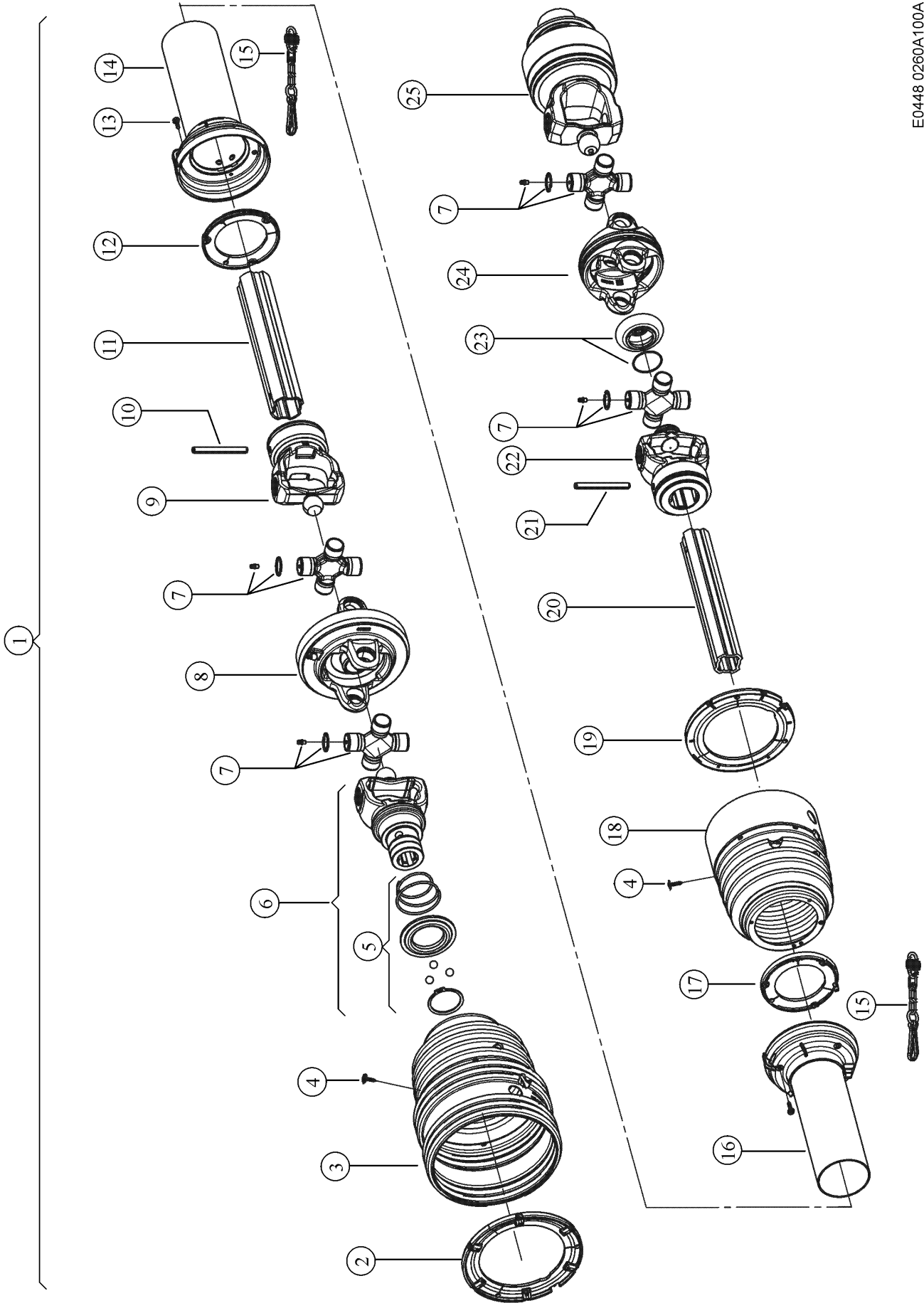
500 MAIN GEARBOX

Pos.	Part No.	Description	Dimension	Quantity	Conditions
39	00 0213 223 0	TA.ROLLER BEARING	303 12	1	
40	00 0213 904 0	PARALLEL KEY	AB20X12X 56	1	



700 FASTENINGS / ATTACHMENT PARTS

Pos.	Part No.	Description	Dimension	Quantity	Conditions
1	00 0963 402 0	GUARD CUP		1	
2	00 0238 952 0	HEXAGON HEAD BOLT	M16X45-MKL	6	
3	00 0239 391 0	CONTACT WASHER	A16	6	
4	00 0239 389 0	CONTACT WASHER	A12	2	
5	00 0239 160 0	HEXAGON HEAD BOLT	M12X35-MKL	2	



E0448 0260A100A 1

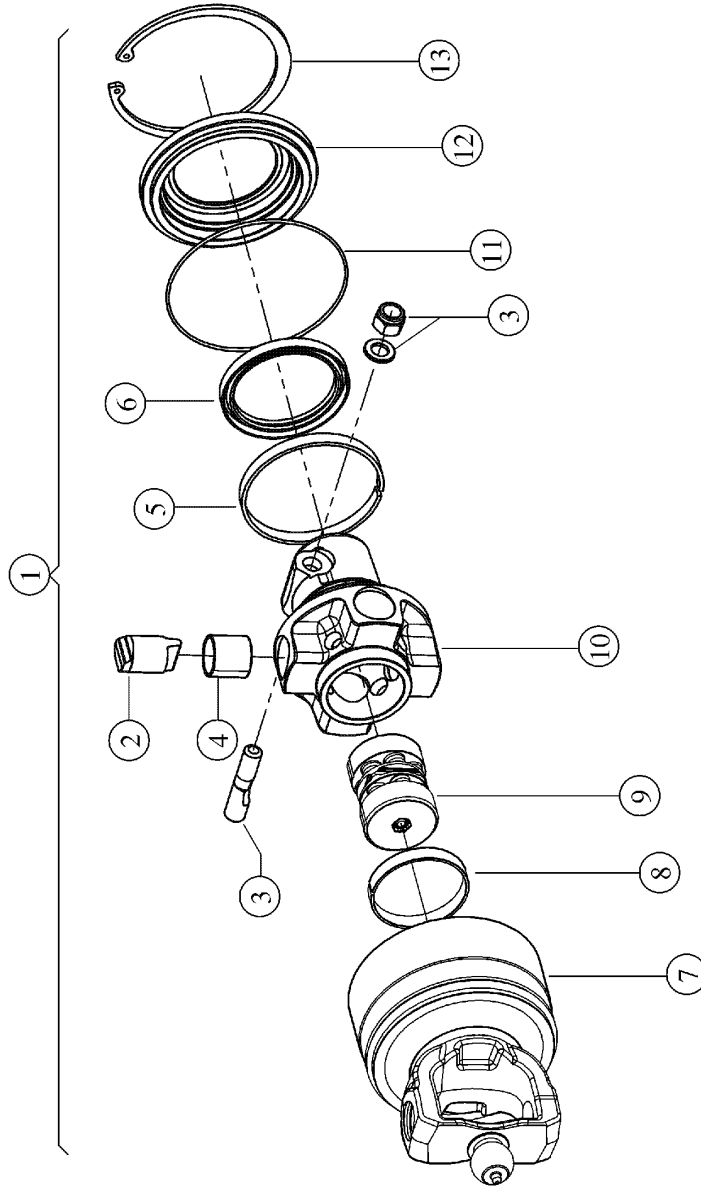
100 DRIVE SHAFT, MAIN DRIVE 1)

Pos.	Part No.	Description	Dimension	Quantity	Conditions
1	00 1322 065 0	DRIVE SHAFT		1	
2	00 0151 046 0	RING		1	
3	00 0151 045 0	PROTECT.FUNNEL		1	
4	00 0214 631 0	FILL.HEAD SCREW	ST4,8X22-C-H	12	
5	00 0151 047 0	DISCONNECT LOCK		1	
5	00 0151 058 0	DISCONNECT LOCK		1	
6	00 0151 038 0	OUTER FORK		1	
6	00 1325 280 0	FORK		1	
7	00 0151 039 0	CENTRE CROSS ASS.		4	
8	00 0151 041 0	DOUBLE FORK		1	
9	00 0151 040 0	INNER FORK		1	
10	00 0233 750 0	SPRING PIN	10 X 95	1	
11	00 0139 042 0	PROFILE TUBE		1	
12	00 0138 198 0	RING		1	
13	00 0214 631 0	FILL.HEAD SCREW	ST4,8X22-C-H	6	
14	00 0138 177 0	PROTECTIVE TUBE		1	
15	00 0148 626 0	SUPPORTING CHAIN		2	
16	00 0138 185 0	PROTECTIVE TUBE		1	
17	00 0138 199 0	RING		1	
18	00 0139 084 0	PROTECT.FUNNEL		1	
19	00 0844 557 0	RING		1	
20	00 0139 050 0	PROFILE TUBE		1	
21	00 0233 750 0	SPRING PIN	10 X 95	1	
22	00 0151 043 0	INNER FORK		1	
23	00 0139 083 0	GASKET		1	
24	00 0151 042 0	DOUBLE FORK		1	
25	00 0151 044 0	CAM DISK		1	

1) Equipment

LW_M04_0040

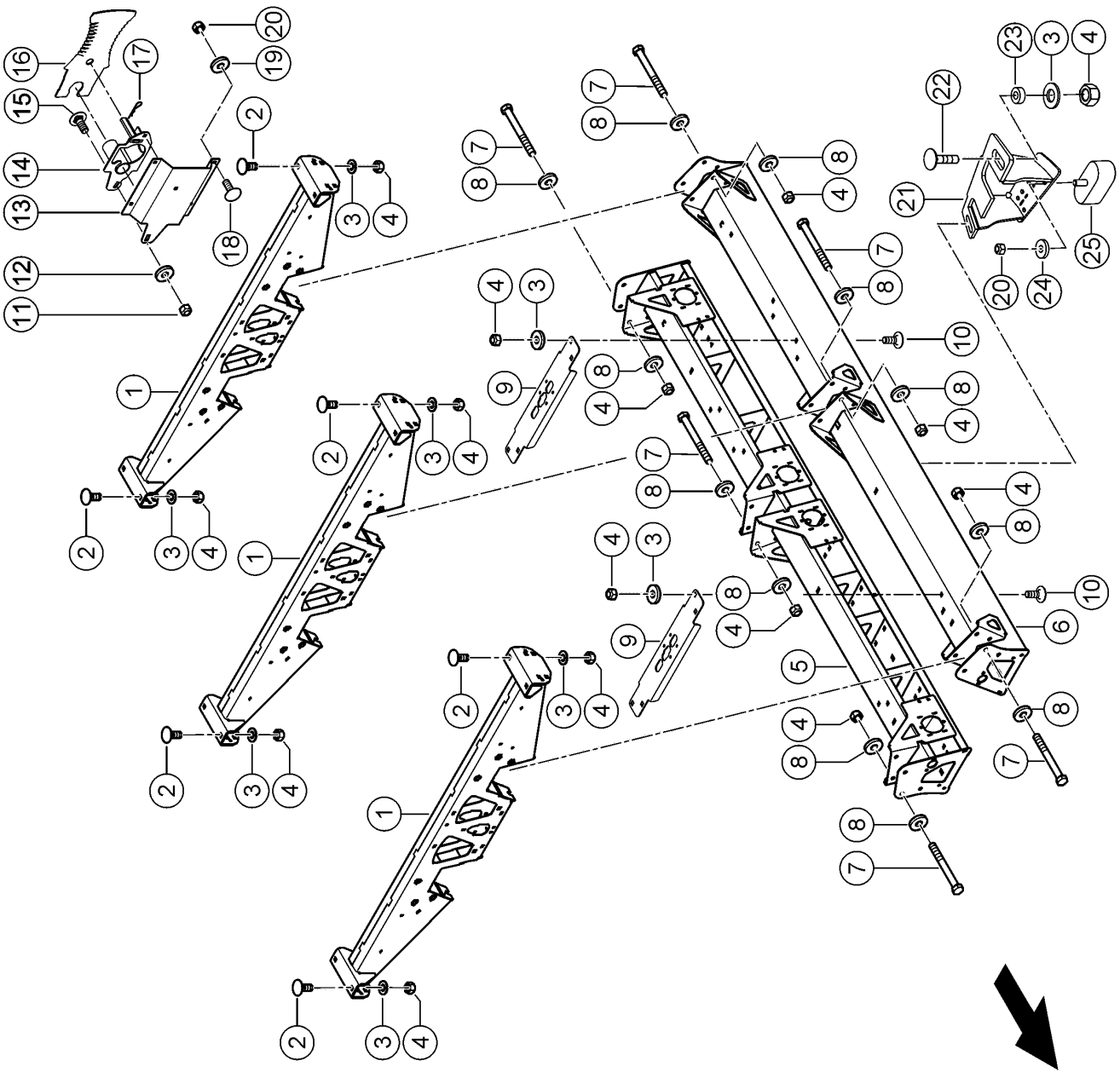
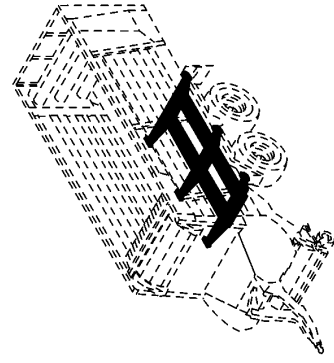
Double-wide-angle PTO drive shaft, 6-spline



100 DRIVE SHAFT, MAIN DRIVE 1)

Pos.	Part No.	Description	Dimension	Quantity	Conditions
1	00 0151 044 0	CAM DISK		1	
2	00 0151 051 0	BLOCK, BODY	LR24	4	
3	00 0843 782 0	CLAMPING SCREW		1	
4	00 0836 417 0	BUSHING		4	
5	00 0843 783 0	RING		1	
6	00 0843 784 0	SEALING RING		1	
7	00 0151 048 0	HOUSING		1	
8	00 0836 414 0	RING		1	
9	00 0151 049 0	SPRING KIT		1	
10	00 0151 050 0	CLUTCH HUB		1	
11	00 0843 785 0	O-RING		1	
12	00 0843 786 0	COVER		1	
13	00 0214 628 0	CIRCLIP	138X4	1	
1)	Equipment	LW_M04_0040	Double-wide-angle PTO drive shaft, 6-spline		

E0448 0305A100A 1



100 AXLE SUPPORT

Pos.	Part No.	Description	Dimension	Quantity	Conditions
1	00 1325 470 5	CROSS SUPPORT		3	1)
2	00 0212 928 0	COACH BOLT	M16X 40	16	1)
3	00 0239 391 0	CONTACT WASHER	A16	24	1)
4	00 0238 047 0	LOCK NUT	M16	44	1)
5	00 1325 453 9	SUPPORT R.H.		1	1)
6	00 1325 452 9	SUPPORT L.H.		1	1)
7	00 0214 455 0	HEXAGON HEAD BOLT	M16X150	18	1)
8	00 0233 488 0	WASHER	17X45X8	36	1)
9	00 1392 070 2	BRACE	5X207X 785	2	1)
10	00 0215 814 0	COACH BOLT	M16X40-F=7	8	1)
11	00 0238 234 0	LOCK NUT	M12	2	1)
12	00 0239 389 0	CONTACT WASHER	A12	2	1)
13	00 1399 917 0	BRACKET	4X378X 416	1	1)
14	00 1392 256 1	KNIFE SUPPORT		1	1)
15	00 0233 454 0	COACH BOLT	M12X25X14	2	1)
16	00 1391 830 0	KNIFE		20	1)
17	00 0665 666 0	SPRING CLIP	3X90	1	1)
18	00 0502 511 0	COACH BOLT	M10X25X20-F=3	4	1)
19	00 0239 394 1	CONTACT WASHER	B10	4	1)
20	00 0237 947 0	HEX. NUT WITH CLAMP. PART	M10	8	1)
21	00 1392 301 1	BRACKET	8X343X 358	4	1)
22	00 0220 506 0	COACH BOLT	M16X 60	8	1)
23	00 0499 458 0	BUSHING	17X 35H9X 14	8	1)
24	00 0239 388 0	CONTACT WASHER	A10-10,2X22,25X1,6	4	1)
25	00 0984 315 0	BUFFER BUMPER	90X40X35, M10X22, 5-8.8	4	1)

1) Equipment

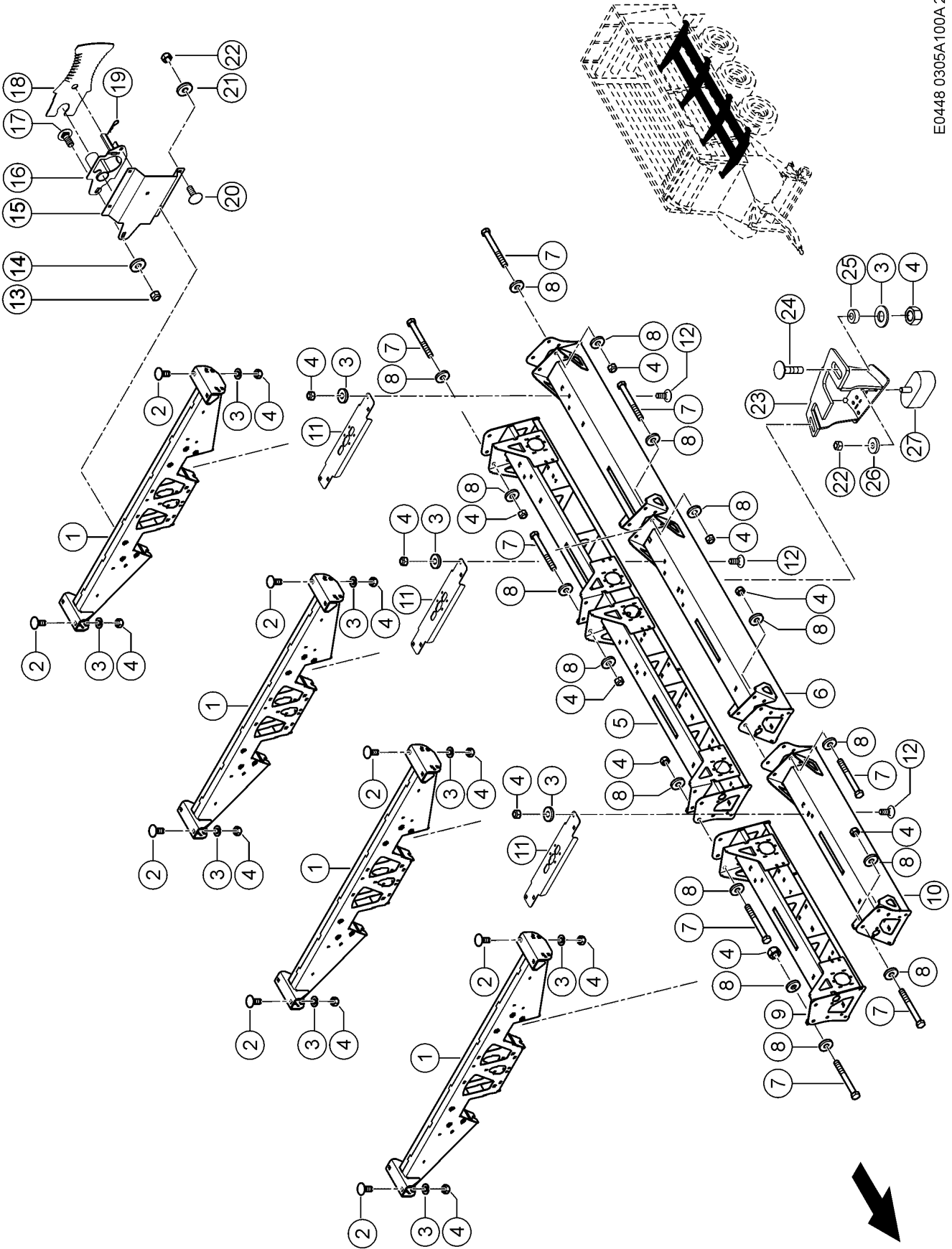
LW_N08_0630

Tandem axle, 20 t axle loading, mechanical suspension

LW_N08_0640

Tandem axle, 20 t axle loading, with hydraulic suspension

E0448 0305A100A 2



100 AXLE SUPPORT

Pos.	Part No.	Description	Dimension	Quantity	Conditions
1	00 1325 470 5	CROSS SUPPORT		4	1)
2	00 0212 928 0	COACH BOLT	M16X 40	16	1)
3	00 0239 391 0	CONTACT WASHER	A16	28	1)
4	00 0238 047 0	LOCK NUT	M16	48	1)
5	00 1325 453 9	SUPPORT R.H.		1	1)
6	00 1325 452 9	SUPPORT L.H.		1	1)
7	00 0214 455 0	HEXAGON HEAD BOLT	M16X150	18	1)
8	00 0233 488 0	WASHER	17X45X8	36	1)
9	00 1392 266 6	SUPPORT		1	1)
10	00 1392 265 6	SUPPORT		1	1)
11	00 1392 070 2	BRACE	5X207X 785	3	1)
12	00 0215 814 0	COACH BOLT	M16X40-F=7	12	1)
13	00 0238 234 0	LOCK NUT	M12	2	1)
14	00 0239 389 0	CONTACT WASHER	A12	2	1)
15	00 1399 917 0	BRACKET	4X378X 416	1	1)
16	00 1392 256 1	KNIFE SUPPORT		1	1)
17	00 0233 454 0	COACH BOLT	M12X25X14	2	1)
18	00 1391 830 0	KNIFE		20	1)
19	00 0665 666 0	SPRING CLIP	3X90	1	1)
20	00 0502 511 0	COACH BOLT	M10X25X20-F=3	4	1)
21	00 0239 394 1	CONTACT WASHER	B10	4	1)
22	00 0237 947 0	HEX. NUT WITH CLAMP. PART	M10	10	1)
23	00 1392 301 1	BRACKET	8X343X 358	6	1)
24	00 0220 506 0	COACH BOLT	M16X 60	12	1)
25	00 0499 458 0	BUSHING	17X 35H9X 14	12	1)
26	00 0239 388 0	CONTACT WASHER	A10-10,2X22,25X1,6	6	1)
27	00 0984 315 0	BUFFER BUMPER	90X40X35, M10X22, 5-8.8	6	1)

1) Equipment

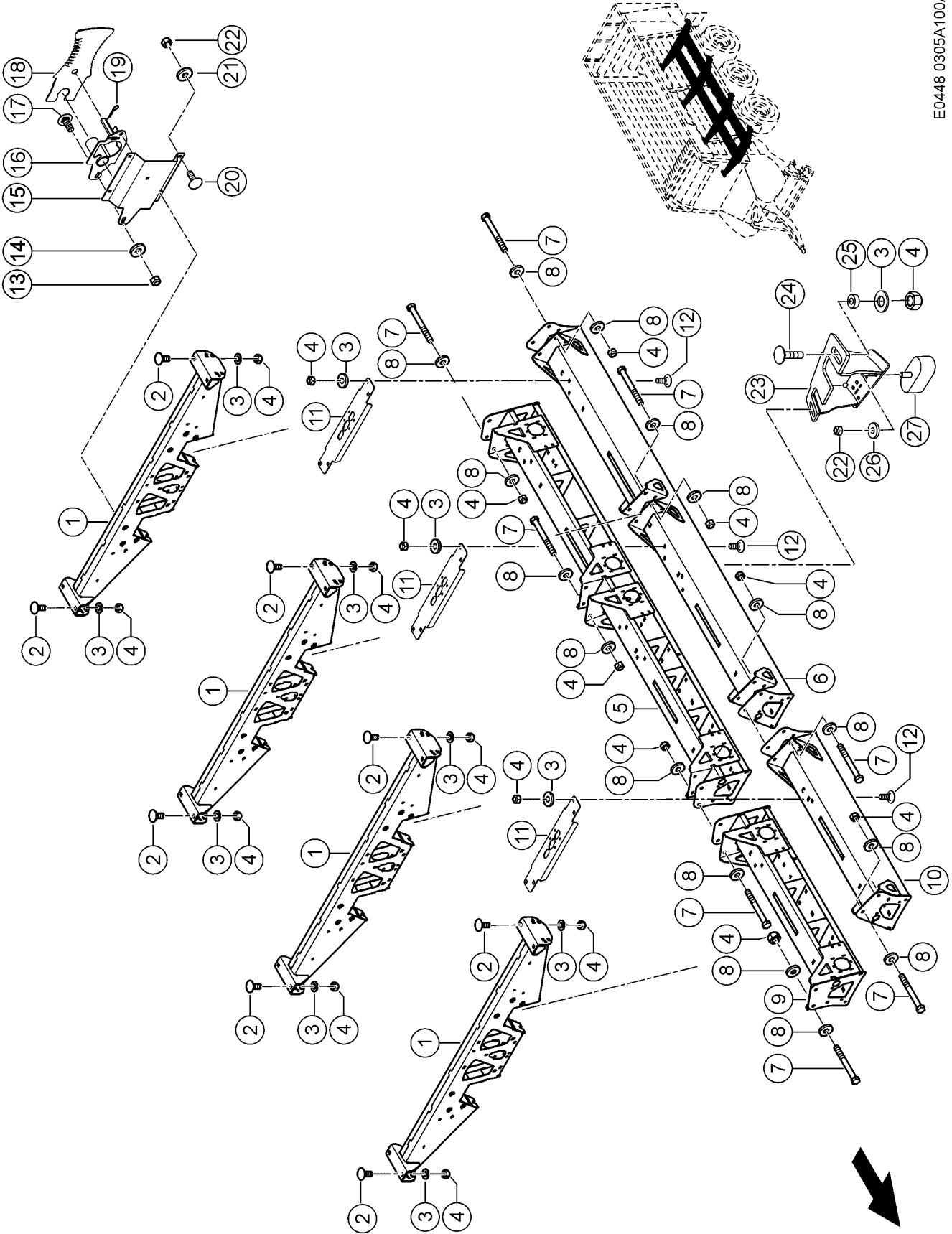
LW_N08_0650

Tridem axle, 27 t axle loading, with hydraulic suspension

LW_N08_0670

Tridem axle, 27 t axle loading, mechanical suspension

E0448 0305A100A 3



100 AXLE SUPPORT

Pos.	Part No.	Description	Dimension	Quantity	Conditions
1	00 1325 470 5	CROSS SUPPORT		3	1)
2	00 0212 928 0	COACH BOLT	M16X 40	16	1)
3	00 0239 391 0	CONTACT WASHER	A16	28	1)
4	00 0238 047 0	LOCK NUT	M16	48	1)
5	00 1325 453 9	SUPPORT R.H.		1	1)
6	00 1325 452 9	SUPPORT L.H.		1	1)
7	00 0214 455 0	HEXAGON HEAD BOLT	M16X150	18	1)
8	00 0233 488 0	WASHER	17X45X8	36	1)
9	00 1392 298 5	SUPPORT		1	1)
10	00 1392 297 5	SUPPORT		1	1)
11	00 1392 070 2	BRACE	5X207X 785	3	1)
12	00 0215 814 0	COACH BOLT	M16X40-F=7	12	1)
13	00 0238 234 0	LOCK NUT	M12	2	1)
14	00 0239 389 0	CONTACT WASHER	A12	2	1)
15	00 1399 917 0	BRACKET	4X378X 416	1	1)
16	00 1392 256 1	KNIFE SUPPORT		1	1)
17	00 0233 454 0	COACH BOLT	M12X25X14	2	1)
18	00 1391 830 0	KNIFE		20	1)
19	00 0665 666 0	SPRING CLIP	3X90	1	1)
20	00 0502 511 0	COACH BOLT	M10X25X20-F=3	4	1)
21	00 0239 394 1	CONTACT WASHER	B10	4	1)
22	00 0237 947 0	HEX. NUT WITH CLAMP. PART	M10	10	1)
23	00 1392 301 1	BRACKET	8X343X 358	6	1)
24	00 0220 506 0	COACH BOLT	M16X 60	12	1)
25	00 0499 458 0	BUSHING	17X 35H9X 14	12	1)
26	00 0239 388 0	CONTACT WASHER	A10-10,2X22,25X1,6	6	1)
27	00 0984 315 0	BUFFER BUMPER	90X40X35, M10X22, 5-8.8	6	1)

1) Equipment

LW_N08_0660

Tridem axle, 30 t axle loading, with hydraulic suspension

LW_N08_0680

Tridem axle, 30 t axle loading, mechanical suspension

Thank you so much for reading.
Please click the “Buy Now!”
button below to download the
complete manual.



After you pay.

You can download the most
perfect and complete manual in
the world immediately.

Our support email:

ebooklibonline@outlook.com