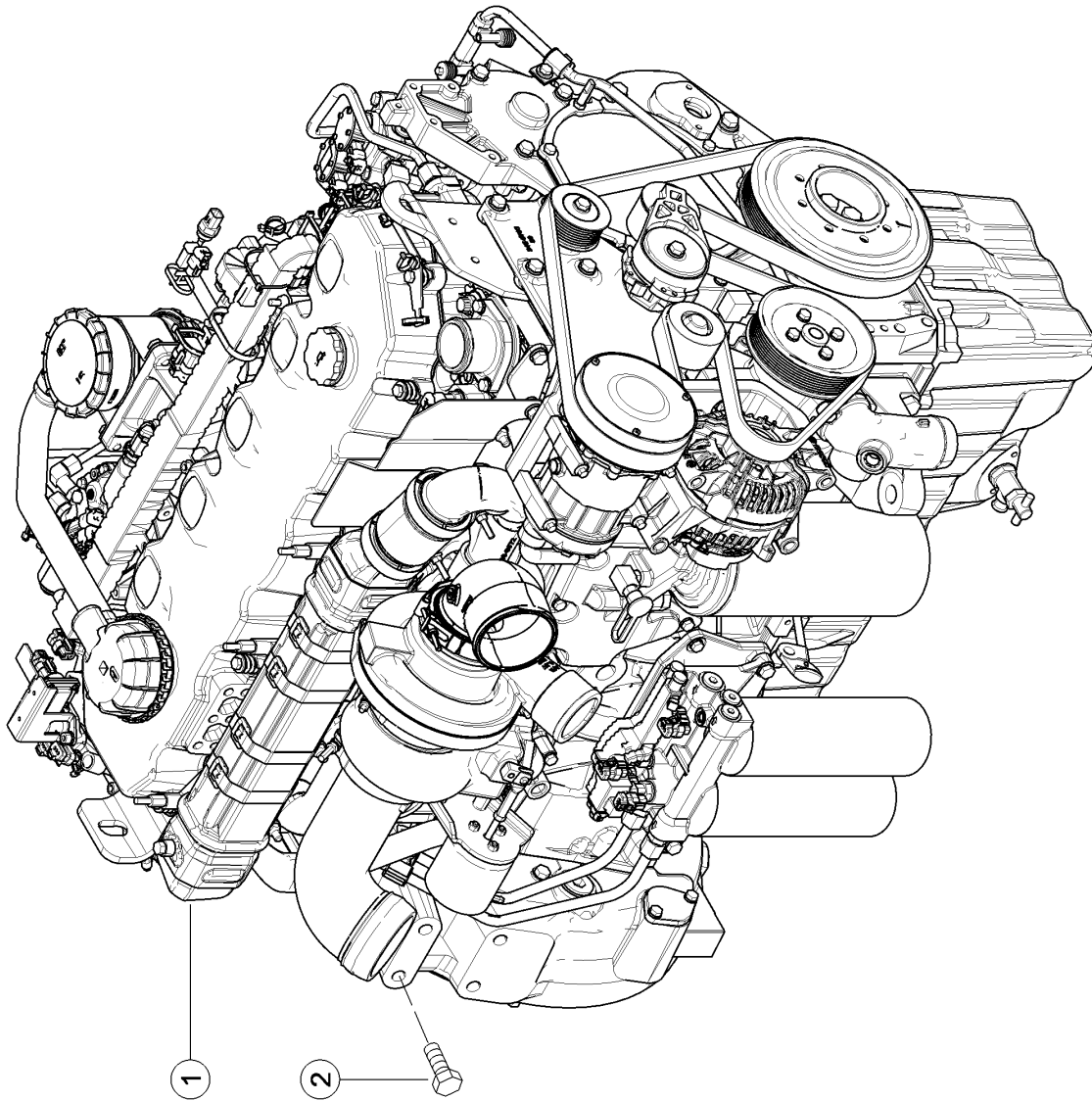


E0245 0102A010A 1



010 COMPLETE ENGINE

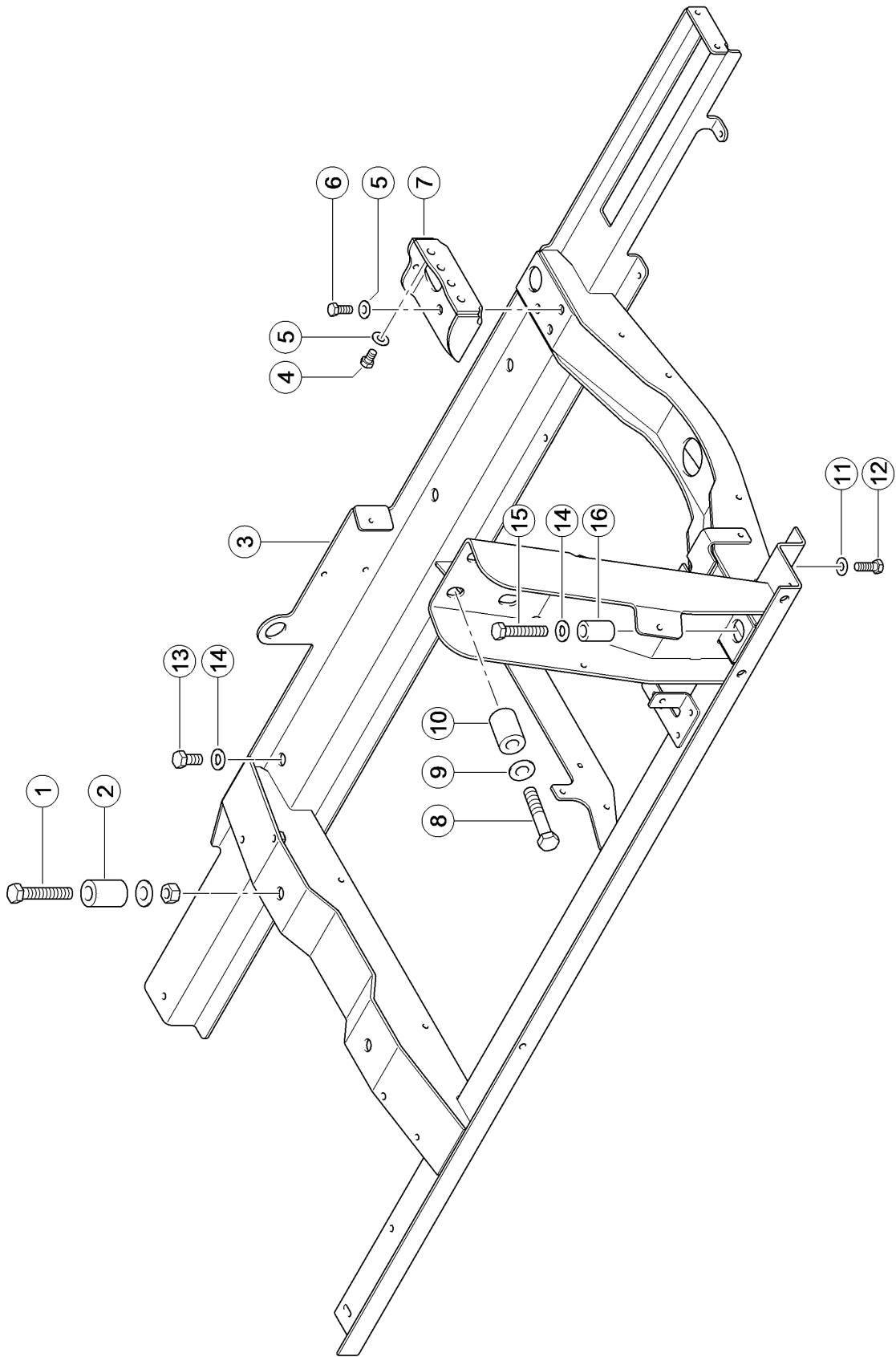
Pos.	Part No.	Description	Dimension	Quantity	Conditions
1	00 0799 928 1	ENGINE	C9.3 305 KW TIER 4I	1	1)
1	00 0799 929 1	ENGINE	C9.3 305 KW TIER 4I	1	2)
1	00 2599 906 0	ENGINE	C9.3 330KW/305KW STAGE I	1	3)
1	00 2599 907 0	ENGINE	C9.3 330KW/305KW STAGE I	1	4)
1	00 0773 906 0	ENGINE		1	5)
1	00 0773 907 0	ENGINE		1	6)
1	00 0773 916 0	ENGINE	KONSERVIERT	1	7)
1	00 0773 917 0	ENGINE	KONSERVIERT	1	8)
1	00 0799 925 1	ENGINE	C13 330 KW TIER 4I FRONT	1	9)
1	00 0799 927 1	ENGINE	C13 330 KW TIER 4I FRONT	1	10)
1	00 2599 908 0	ENGINE	C13 360KW/330KW STAGE II	1	11)
1	00 2599 909 0	ENGINE	C13 360KW/330KW STAGE II	1	12)
1	00 0773 908 0	ENGINE		1	13)
1	00 0773 909 0	ENGINE		1	14)
1	00 0773 918 0	ENGINE	KONSERVIERT	1	15)
1	00 0773 919 0	ENGINE	KONSERVIERT	1	14)
1	00 2599 906 0	ENGINE	C9.3 330KW/305KW STAGE I	1	16)
1	00 2599 907 0	ENGINE	C9.3 330KW/305KW STAGE I	1	17)
1	00 2599 908 0	ENGINE	C13 360KW/330KW STAGE II	1	18)
1	00 2599 909 0	ENGINE	C13 360KW/330KW STAGE II	1	19)

1)	Equipment				
	machine no.	MD_P02_0270	Caterpillar C9.3 - 330 kW/449 hp (T4i) + up to C6500985 Replacement / Reman: without air compressor, without attachment pa		
2)	Equipment				
	machine no.	MD_P02_0271	Caterpillar C9.3 - 330 kW/449 hp (T4i) with air compressor + up to C6500985 Replacement / Reman: without air compressor, without attachment pa		
3)	Equipment				
	machine no.	MD_P02_0270	Caterpillar C9.3 - 330 kW/449 hp (T4i) + from C6500986 up to C6502066		
4)	Equipment				
	machine no.	MD_P02_0271	Caterpillar C9.3 - 330 kW/449 hp (T4i) with air compressor + from C6500986 up to C6501555		
5)	Equipment				
	Remarks	MD_P02_0270	Caterpillar C9.3 - 330 kW/449 hp (T4i) Replacement / Reman: without air compressor, without attachment pa		
6)	Equipment				
	Remarks	MD_P02_0271	Caterpillar C9.3 - 330 kW/449 hp (T4i) with air compressor Replacement / Reman: without air compressor, without attachment pa		
7)	Equipment				
	machine no.	MD_P02_0270	Caterpillar C9.3 - 330 kW/449 hp (T4i) + from C6502067 up to C6502485 Replacement / Reman: without air compressor, without attachment pa		
8)	Equipment				
	machine no.	MD_P02_0271	Caterpillar C9.3 - 330 kW/449 hp (T4i) with air compressor + from C6501556 up to C6502485 Replacement / Reman: without air compressor, without attachment pa		

010 COMPLETE ENGINE

9) Equipment		
machine no.	MD_P02_0642	Caterpillar C13 - 360 kW/490 hp (T4i) + up to C6500985 Replacement / Reman: without air compressor, without attachment pa
10) Equipment		
machine no.	MD_P02_0643	Caterpillar C13 - 360 kW/490 hp (T4i) with air compressor + up to C6500985 Replacement / Reman: without air compressor, without attachment pa
11) Equipment		
machine no.	MD_P02_0642	Caterpillar C13 - 360 kW/490 hp (T4i) + from C6500986 up to C6501828
12) Equipment		
machine no.	MD_P02_0643	Caterpillar C13 - 360 kW/490 hp (T4i) with air compressor + from C6500986 up to C6501555
13) Equipment		
Remarks	MD_P02_0642	Caterpillar C13 - 360 kW/490 hp (T4i) Replacement / Reman: without air compressor, without attachment pa
14) Equipment		
Remarks	MD_P02_0643	Caterpillar C13 - 360 kW/490 hp (T4i) with air compressor Replacement / Reman: without air compressor, without attachment pa
15) Equipment		
machine no.	MD_P02_0642	Caterpillar C13 - 360 kW/490 hp (T4i) + from C6501829 up to C6502485 Replacement / Reman: without air compressor, without attachment pa
16) Equipment		
machine no.	MD_P02_0270	Caterpillar C9.3 - 330 kW/449 hp (T4i) + from C6502486
17) Equipment		
machine no.	MD_P02_0271	Caterpillar C9.3 - 330 kW/449 hp (T4i) with air compressor + from C6502486
18) Equipment		
machine no.	MD_P02_0642	Caterpillar C13 - 360 kW/490 hp (T4i) + from C6502486
19) Equipment		
machine no.	MD_P02_0643	Caterpillar C13 - 360 kW/490 hp (T4i) with air compressor + from C6502486

E0245 0105A100A 1



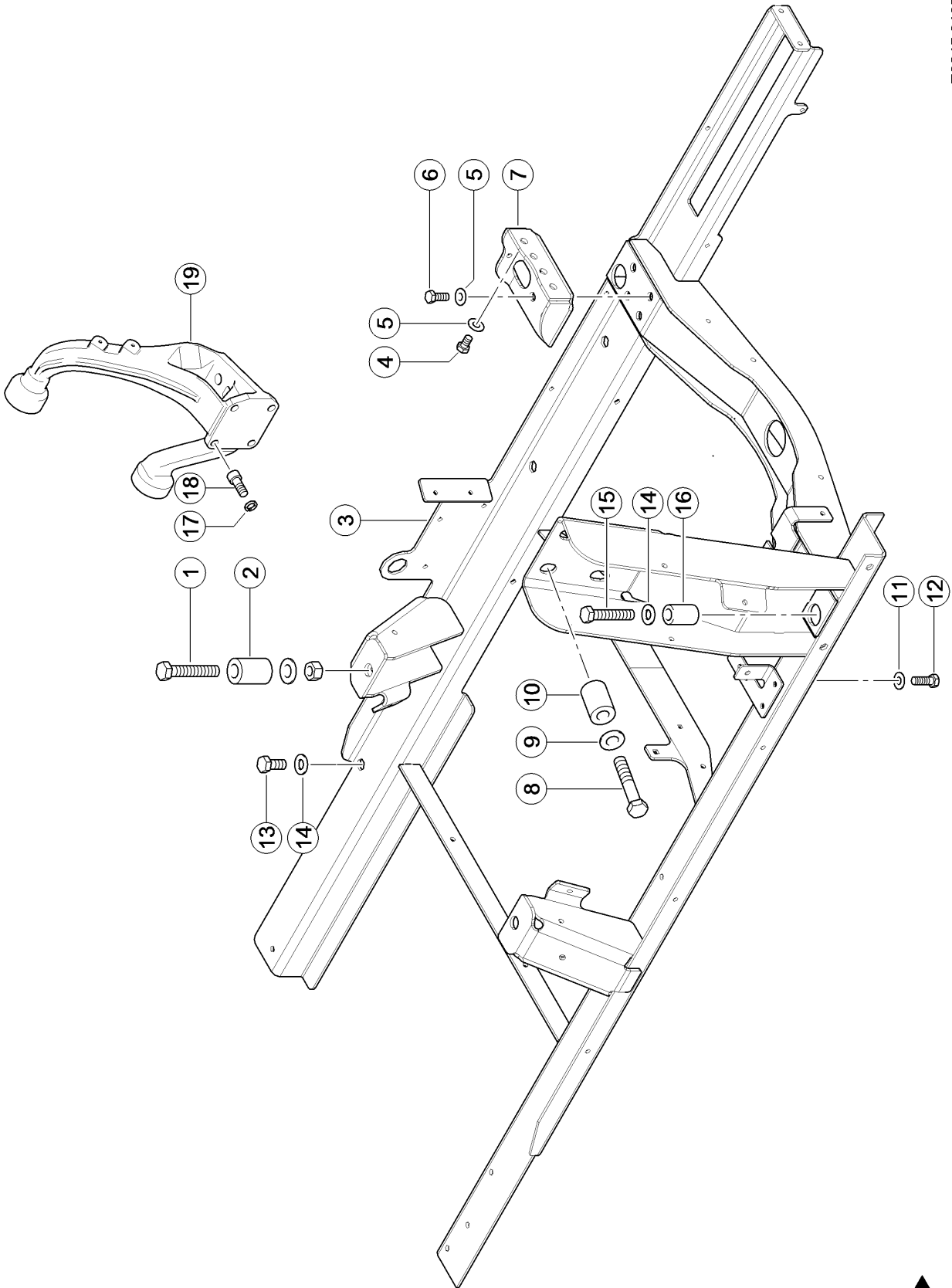
100 ENGINE SUSPENSION 1)

Pos.	Part No.	Description	Dimension	Quantity	Conditions
1	00 0211 573 0	HEXAGON HEAD BOLT	M18-100	2	
1	00 0212 191 0	CONTACT WASHER	A20	2	
1	00 0242 848 0	HEXAGONAL NUT	M18	2	
2	00 0796 231 0	BUSHING	D42D20.5X62	2	
3	00 0799 395 3	ENGINE MOUNTING	C13 T3	1	
4	00 0237 458 0	HEXAGON HEAD BOLT	M12X20	4	
5	00 0239 389 0	CONTACT WASHER	A12	7	
6	00 0237 461 0	HEXAGON HEAD BOLT	M12X30	3	
7	00 0799 298 0	SUPPORT	6X171,6X271,6	1	
8	00 0215 631 0	HEXAGON HEAD BOLT	3/4-10UNC-2AX4 1/2	4	
9	00 0212 191 0	CONTACT WASHER	A20	4	
10	00 0796 231 0	BUSHING	D42D20.5X62	4	
11	00 0239 389 0	CONTACT WASHER	A12	1	
12	00 0211 465 0	HEX.HEAD BOLT	1/2-13UNC-2AX1 1/2	1	
13	00 0236 230 0	HEXAGON HEAD BOLT	M16X35	6	
14	00 0239 391 0	CONTACT WASHER	A16	8	
15	00 0239 415 0	HEXAGON HEAD BOLT	M16X85	2	
16	00 0796 273 0	BUSHING	D32/D18X50	2	

1) Equipment

MD_P02_0260	C13 R120 317/339 kW T3
MD_P02_0261	C13K R120 317/339 kW T3
MD_P02_0264	C13 R120 287/308 kW T3
MD_P02_0265	C13K R120 287/308 kW T3

E0245 0105A100B 1



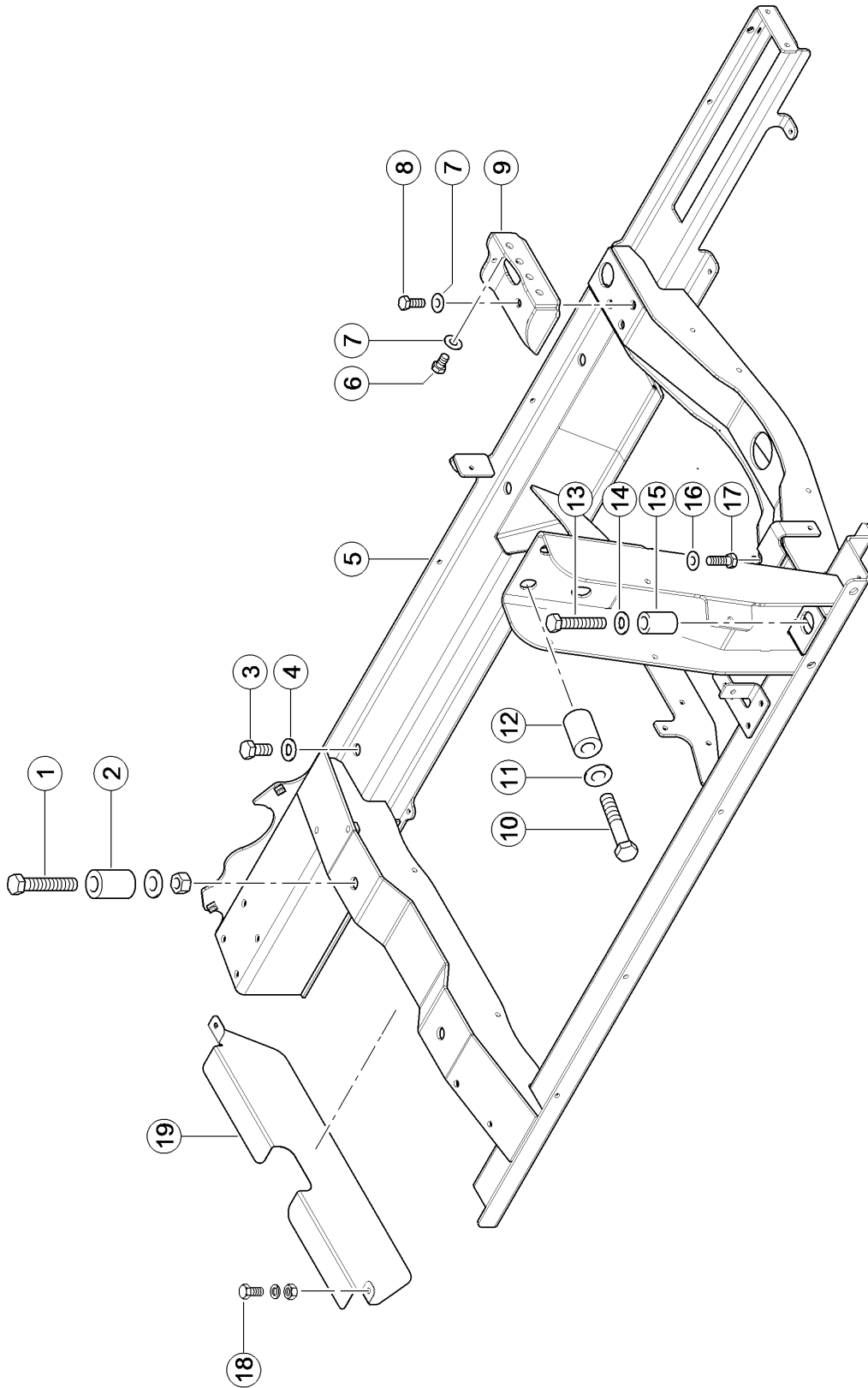
100 ENGINE SUSPENSION 1)

Pos.	Part No.	Description	Dimension	Quantity	Conditions
1	00 0211 186 0	HEXAGON HEAD BOLT	M20X130	2	
1	00 0212 191 0	CONTACT WASHER	A20	2	
1	00 0237 521 0	HEX.NUT	M20	2	
2	00 0796 231 0	BUSHING	D42D20.5X62	2	
3	00 0799 399 3	ENGINE MOUNTING	C9.3 T4I SCHMAL	1	
4	00 0237 458 0	HEXAGON HEAD BOLT	M12X20	4	
5	00 0239 389 0	CONTACT WASHER	A12	8	
6	00 0237 461 0	HEXAGON HEAD BOLT	M12X30	4	
7	00 0799 297 0	SUPPORT	6X171,6X271,6	1	
8	00 0215 631 0	HEXAGON HEAD BOLT	3/4-10UNC-2AX4 1/2	4	
9	00 0212 191 0	CONTACT WASHER	A20	4	
10	00 0796 231 0	BUSHING	D42D20.5X62	4	
11	00 0239 389 0	CONTACT WASHER	A12	1	
12	00 0211 465 0	HEX.HEAD BOLT	1/2-13UNC-2AX1 1/2	1	
13	00 0236 230 0	HEXAGON HEAD BOLT	M16X35	6	
14	00 0239 391 0	CONTACT WASHER	A16	8	
15	00 0239 415 0	HEXAGON HEAD BOLT	M16X85	2	
16	00 0796 273 0	BUSHING	D32/D18X50	2	
17	00 0215 291 1	WASHER	16 -16,2X24,6X3,5	4	
18	00 0214 367 0	SOCKET HEAD SCREW	M16X 40	4	
19	00 0799 998 0	ENGINE SUPPORT	C9.3	1	

1) Equipment

MD_P02_0270	Caterpillar C9.3 - 330 kW/449 hp (T4i)
MD_P02_0271	Caterpillar C9.3 - 330 kW/449 hp (T4i) with air compressor
MD_P02_0664	Caterpillar C9.3 - 294 kW/400 hp (T4i)
MD_P02_0665	Caterpillar C9.3 - 294 kW/400 hp (T4i) with air compressor

E0245 0105A100C 1



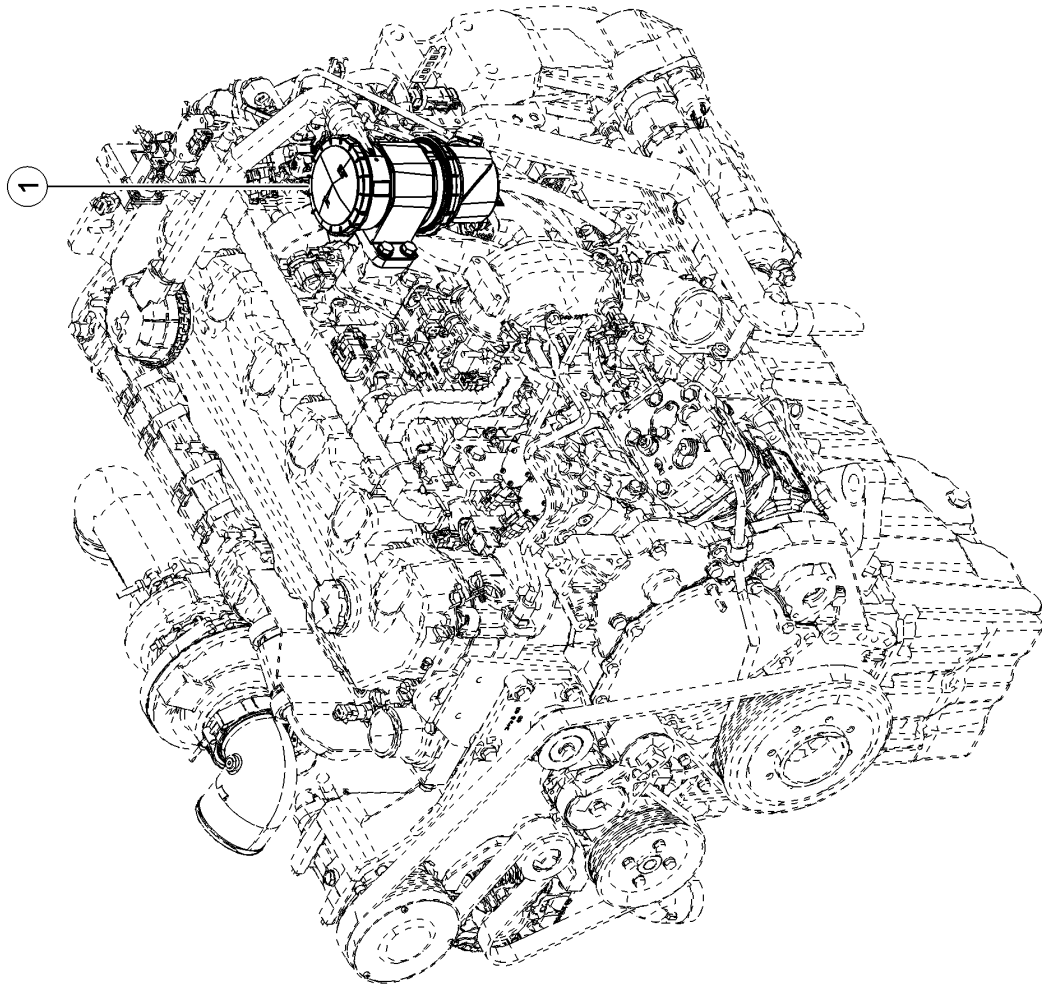
100 ENGINE SUSPENSION 1)

Pos.	Part No.	Description	Dimension	Quantity	Conditions
1	00 0216 392 0	HEXAGON HEAD BOLT	M18X100 ERS.D.216392.1	2	
1	00 0212 191 0	CONTACT WASHER	A20	2	
1	00 0242 848 0	HEXAGONAL NUT	M18	2	
2	00 0796 231 0	BUSHING	D42D20.5X62	2	
3	00 0236 230 0	HEXAGON HEAD BOLT	M16X35	6	
4	00 0239 391 0	CONTACT WASHER	A16	6	
5	00 0780 023 3	ENGINE MOUNTING	C13 T4i SLK	1	
6	00 0237 458 0	HEXAGON HEAD BOLT	M12X20	4	
7	00 0239 389 0	CONTACT WASHER	A12	7	
8	00 0237 461 0	HEXAGON HEAD BOLT	M12X30	3	
9	00 0799 298 0	SUPPORT	6X171,6X271,6	1	
10	00 0215 631 0	HEXAGON HEAD BOLT	3/4-10UNC-2AX4 1/2	4	
11	00 0212 191 0	CONTACT WASHER	A20	4	
12	00 0796 231 0	BUSHING	D42D20.5X62	4	
13	00 0239 415 0	HEXAGON HEAD BOLT	M16X85	2	
14	00 0239 391 0	CONTACT WASHER	A16	2	
15	00 0796 273 0	BUSHING	D32/D18X50	2	
16	00 0239 389 0	CONTACT WASHER	A12	1	
17	00 0211 465 0	HEX.HEAD BOLT	1/2-13UNC-2AX1 1/2	1	
18	00 0236 200 0	HEXAGON HEAD BOLT	M8X20	2	2)
18	00 0239 387 0	CONTACT WASHER	A8-8,2X18X1,4	2	2)
18	00 0236 170 0	HEXAGONAL NUT	M8	1	2)
19	00 0773 593 0	INTERMED. PLATE	1,5X172,5X622,0	1	2)
19	00 0205 693 0	SEALING PROFILE	24,5 X 11,5- 1,5	1	3)
19	00 0200 706 0	EDGE PROTECTOR	10X14,5X3,5	1	4)

1) EquipmentMD_P02_0642
MD_P02_0643Caterpillar C13 - 360 kW/490 hp (T4i)
Caterpillar C13 - 360 kW/490 hp (T4i) with air compressor**2) machine no.**

+ from C6501699

3) machine no.+ from C6501699
720 mm long**4) machine no.**+ from C6501699
140 mm long



200 CRANK CASE BREATHER

Pos.	Part No.	Description	Dimension	Quantity	Conditions
1	00 0781 992 0	FILTER		1	1)
2	00 2599 997 0	FILTER		1	2)

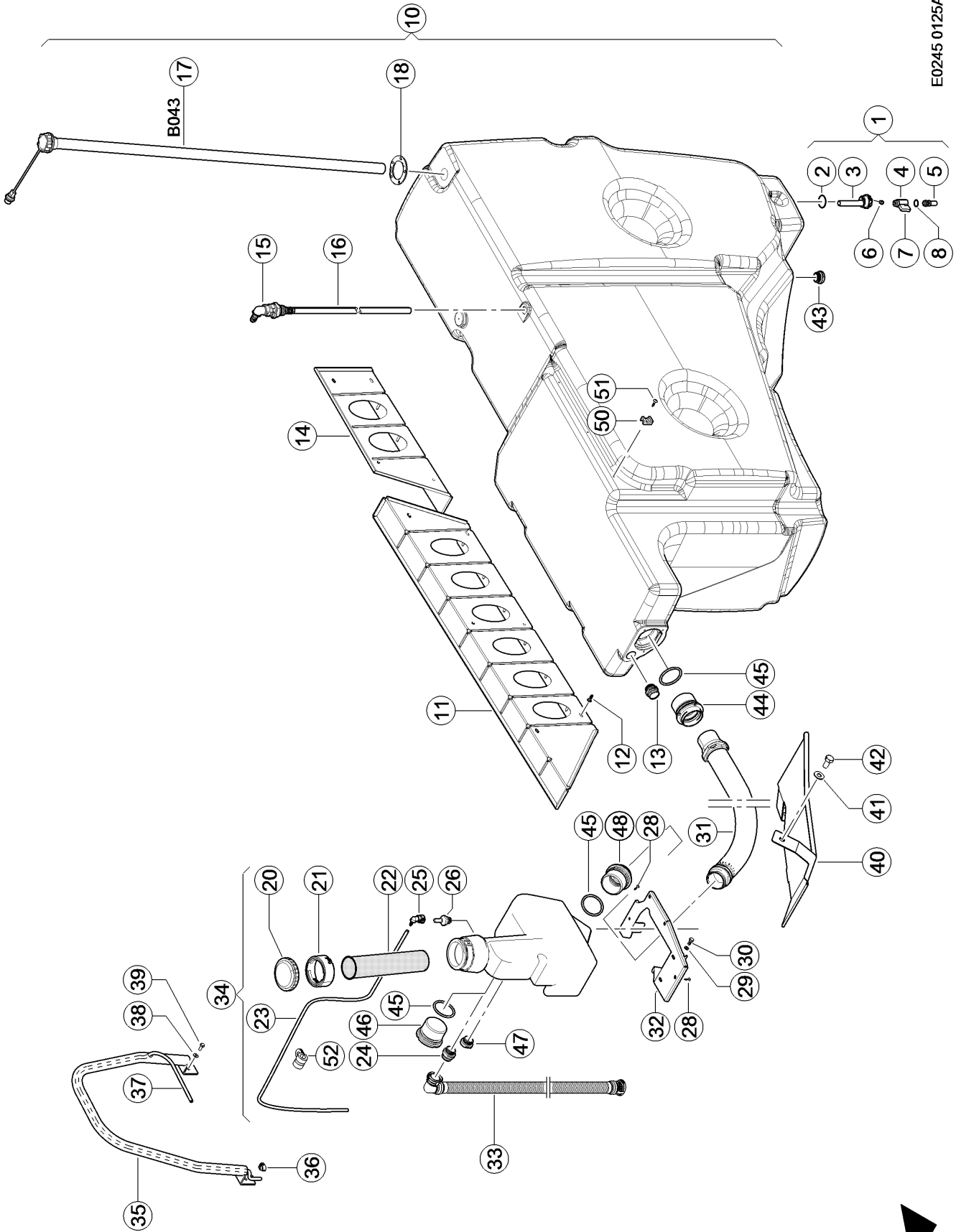
1) Equipment

MD_P02_0260	C13 R120 317/339 kW T3
MD_P02_0261	C13K R120 317/339 kW T3
MD_P02_0264	C13 R120 287/308 kW T3
MD_P02_0265	C13K R120 287/308 kW T3
MD_P02_0642	Caterpillar C13 - 360 kW/490 hp (T4i)
MD_P02_0643	Caterpillar C13 - 360 kW/490 hp (T4i) with air compressor

2) Equipment

MD_P02_0270	Caterpillar C9.3 - 330 kW/449 hp (T4i)
MD_P02_0271	Caterpillar C9.3 - 330 kW/449 hp (T4i) with air compressor
MD_P02_0664	Caterpillar C9.3 - 294 kW/400 hp (T4i)
MD_P02_0665	Caterpillar C9.3 - 294 kW/400 hp (T4i) with air compressor

E0245 0125A100A 1



100 FUEL TANK

Pos.	Part No.	Description	Dimension	Quantity	Conditions
1	00 0794 414 1	CONNECTION	MIT W.ABLAS ; KUGELH. ;	1	1)
2	00 0217 459 1	O-RING	27X4,0 -N	1	
3	00 0783 643 1	PLUG	WASSER + G3/8"	1	
4	00 0783 652 0	BALL-TYPE TAP	DN8-I-G3/8XA-G3/8	1	
5	00 0783 644 1	ADAPTOR	G3/8"- 1/2" SAE J 20441		
6	00 0687 625 1	HEXAGON HEAD BOLT	M8X17 F. TANK	1	
7	00 0783 658 0	ANTI-ROTAT. LOCK	WASSERABLA FUER 3/8" KUGELHAHN	1	
8	00 0216 366 0	O-RING	10,50X1,5 NBR80	1	
10	00 1802 622 5	FUEL TANK	800 LTR.	1	2)
11	00 0505 467 2	BELT PROTECTOR	1,5X575X1433,6	1	
12	00 0217 504 0	SCREW	K60X20-T25-WN1451	10	
13	00 1802 724 0	SOCKET		1	
14	00 0505 466 2	BELT PROTECTOR	1,5X434.1X678,3	1	
15	00 0783 649 1	ADAPTER		1	
16	00 0136 559 0	TUBE	12,5X1,25X10000	1	3)
17	00 0016 596 3	LEVEL INDICATOR	L=1320MM	1	4)
17	00 0783 653 0	PT SCREW	6ST 4X40	1	
18	00 0794 993 0	GASKET	VORRATSGEBER	1	
20	00 0217 508 0	CAP	DV 80 GL OHNE LÜFTUNG	1	
20	00 0177 621 0	CAP	D80 BELUEFTET, ABSCHLIES	1	5)
21	00 0038 915 0	SOCKET	SV 80 B/40	1	
22	00 0736 238 0	TANK FILTER		1	
23	00 0202 240 0	HOSE	A 6X10	2	
24	00 1802 724 0	SOCKET		1	
25	00 0217 501 0	CONNECTOR	NQS 1/2" - 6 X 90 GRAD	1	
26	00 0794 417 2	VENTILATION		1	
28	00 0475 169 0	SCREW	80X25-IP40-WN5451	12	
29	00 0239 388 0	CONTACT WASHER	A10-10,2X22,25X1,6	1	
30	00 0237 383 0	HEXAGON HEAD BOLT	M10X25	1	
31	00 1805 060 3	FILLER TUBE	FUER HAUPTTANK	1	
32	00 0505 448 2	SUPPORTING PLATE	192,5X239X388	1	
33	00 0505 574 2	HOSE	FUER H-TANK	1	
33	00 0783 669 0	CONNECTOR	0°	1	
33	00 0783 670 0	CONNECTOR	90°	1	
34	00 1804 104 2	FILLER HEAD	O. ZUSATZTANK	1	6)
34	00 0505 881 5	FILLER HEAD		1	7)
35	00 1804 176 1	BRACKET		1	8)
36	00 0013 154 0	CABLE CLAMP	NW 8,5	1	9)
37	00 0202 240 0	HOSE	A 6X10	2	10)
38	00 0239 387 0	CONTACT WASHER	A8-8,2X18X1,4	2	8)
39	00 0236 200 0	HEXAGON HEAD BOLT	M8X20	2	8)
40	00 1804 243 1	GUARD		1	
40	00 0200 706 0	EDGE PROTECTOR	10X14,5X3,5	1	11)
41	00 0239 388 0	CONTACT WASHER	A10-10,2X22,25X1,6	3	
42	00 0237 382 0	HEXAGON HEAD BOLT	M10X20	3	
43	00 1802 723 0	BLIND PLUG		1	12)
44	00 1805 014 2	CLUTCH	D90X73,3	1	
45	00 0505 956 1	O-RING	68,7 X 6	3	13)

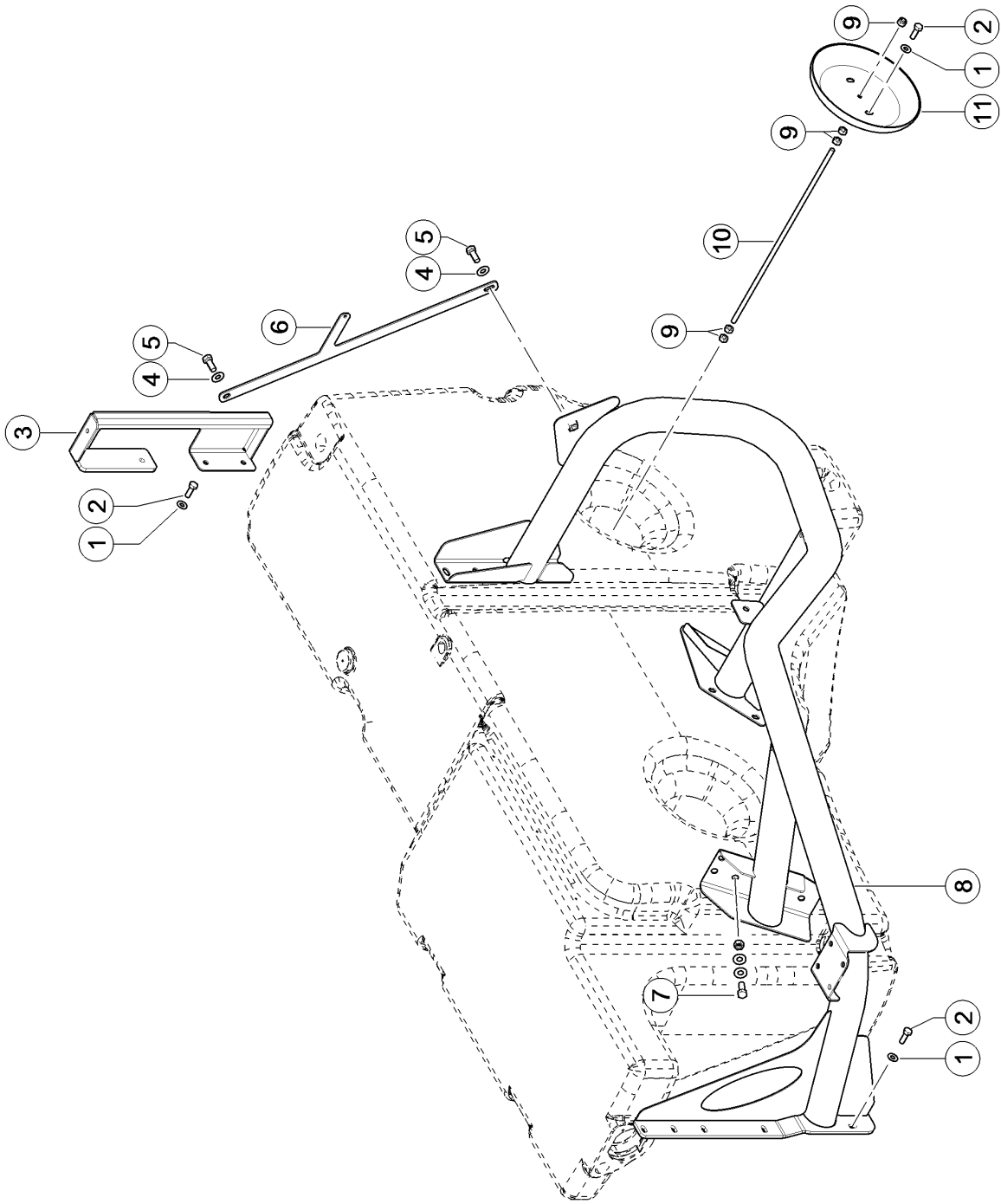
100 FUEL TANK

Pos.	Part No.	Description	Dimension	Quantity	Conditions
46	00 0505 955 1	BLIND PLUG	NORMAQUICK PS3 NW50 VDA	1	14)
46	00 1804 102 1	BLIND PLUG	D90X62,5	1	15)
46	00 1804 006 3	CLUTCH	PS3-NW50-M76X6	1	16)
46	00 1805 014 2	CLUTCH	D90X73,3	1	17)
46	00 1804 074 0	SOCKET		1	18)
47	00 0217 912 0	BLIND PLUG	NQ V2-NW27	1	14)
47	00 1802 723 0	BLIND PLUG		1	19)
47	00 1802 724 0	SOCKET		1	20)
48	00 1804 006 3	CLUTCH	PS3-NW50-M76X6	1	16)
48	00 0505 955 1	BLIND PLUG	NORMAQUICK PS3 NW50 VDA	1	14)
48	00 1805 150 0	CLUTCH		1	15)
48	00 1805 014 2	CLUTCH	D90X73,3	1	17)
48	00 1804 075 0	SOCKET	D90X85,5	1	18)
50	00 1804 166 0	SUPPORT	10X16X23	4	13)
51	00 1116 932 0	PT SCREW	K50X16-T20-WN1451	4	13)
52	00 0217 507 0	PIPE BRACKET	NW 7,5	3	13)
52	00 0216 341 0	HOLDER CLAMP	D1-12X20	4	21)
1)	Remarks		with Item 2 - 8		
2)	Remarks		with Item 1, 11 - 18, 44 - 45		
3)	Remarks		1290mm long		
4)	CCN	CCN-B043	fuel level sensor without 783 653.0		
5)	Remarks		As per requirement.		
6)	Equipment	MD_P14_0080	Fuel tank 800 litres with Item 20 - 22, 24, 26, 32, 46 - 48		
7)	Equipment	MD_P14_0115	Fuel tank 1150 litres with Item 20 - 22, 24, 26, 32, 46 - 48		
8)	Equipment	MD_P02_0260 MD_P02_0261 MD_P02_0264 MD_P02_0265 MD_P02_0270 MD_P02_0271 MD_P02_0664 MD_P02_0665	C13 R120 317/339 kW T3 C13K R120 317/339 kW T3 C13 R120 287/308 kW T3 C13K R120 287/308 kW T3 Caterpillar C9.3 - 330 kW/449 hp (T4i) Caterpillar C9.3 - 330 kW/449 hp (T4i) with air compressor Caterpillar C9.3 - 294 kW/400 hp (T4i) Caterpillar C9.3 - 294 kW/400 hp (T4i) with air compressor		
9)	Equipment	MD_P02_0260 MD_P02_0261 MD_P02_0264 MD_P02_0265 MD_P02_0270 MD_P02_0271	C13 R120 317/339 kW T3 C13K R120 317/339 kW T3 C13 R120 287/308 kW T3 C13K R120 287/308 kW T3 Caterpillar C9.3 - 330 kW/449 hp (T4i) Caterpillar C9.3 - 330 kW/449 hp (T4i) with air compressor		
10)	Equipment	MD_P02_0260 MD_P02_0261 MD_P02_0264 MD_P02_0265 MD_P02_0270 MD_P02_0271	C13 R120 317/339 kW T3 C13K R120 317/339 kW T3 C13 R120 287/308 kW T3 C13K R120 287/308 kW T3 Caterpillar C9.3 - 330 kW/449 hp (T4i) Caterpillar C9.3 - 330 kW/449 hp (T4i) with air compressor		

100 FUEL TANK

10)	MD_P02_0664 MD_P02_0665	Caterpillar C9.3 - 294 kW/400 hp (T4i) Caterpillar C9.3 - 294 kW/400 hp (T4i) with air compressor 1600 mm long
Remarks		
11) Remarks		450 mm long
12) Equipment	MD_P14_0080	Fuel tank 800 litres
13) machine no.		+ from C6500054
14) Equipment	MD_P14_0080	Fuel tank 800 litres + from C6501487
machine no.		
15) Equipment	MD_P14_0080	Fuel tank 800 litres + from C6500054 up to C6501486
machine no.		
16) Equipment	MD_P14_0114	MD_P14_0114 + from C6501487
machine no.		
17) Equipment	MD_P14_0115	Fuel tank 1150 litres + from C6500054 up to C6501486
machine no.		
18) Equipment	MD_P14_0080 MD_P14_0115	Fuel tank 800 litres Fuel tank 1150 litres + up to C6500053
machine no.		
19) Equipment	MD_P14_0080	Fuel tank 800 litres + up to C6501486
machine no.		
20) Equipment	MD_P14_0115	Fuel tank 1150 litres
machine no.		+ up to C6500053

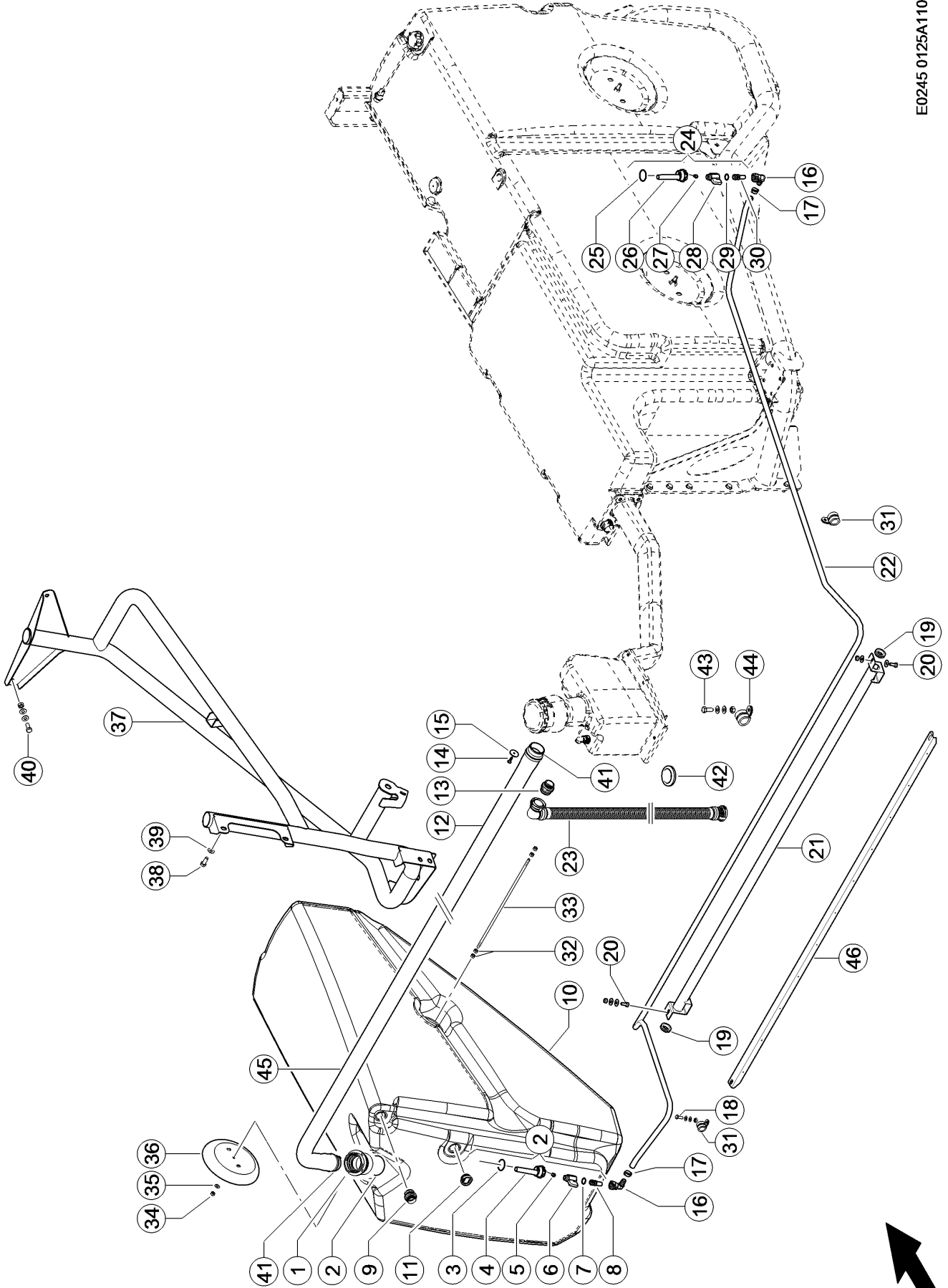
E0245 0125A100A 2



100 FUEL TANK

Pos.	Part No.	Description	Dimension	Quantity	Conditions
1	00 0239 388 0	CONTACT WASHER	A10-10,2X22,25X1,6	14	
2	00 0237 453 0	HEXAGON HEAD BOLT	M10X30	14	
3	00 1802 739 3	SUPPORT		1	
4	00 0239 389 0	CONTACT WASHER	A12	2	
5	00 0237 461 0	HEXAGON HEAD BOLT	M12X30	2	
6	00 1802 746 3	BRACE	4X153,5X655,3	1	
7	00 0237 461 0	HEXAGON HEAD BOLT	M12X30	3	
7	00 0239 389 0	CONTACT WASHER	A12	6	
7	00 0236 172 0	HEXAGONAL NUT	M12	3	
8	00 1802 661 2	TANK SUPPORT	800 LTR	1	
9	00 0236 171 0	HEXAGONAL NUT	M10	10	
10	00 0505 944 0	THREADED ROD	M10X530	2	
11	00 0548 224 1	WASHER		2	

E0245 0125A110A 1



110 ADITIONAL FUEL TANK 1)

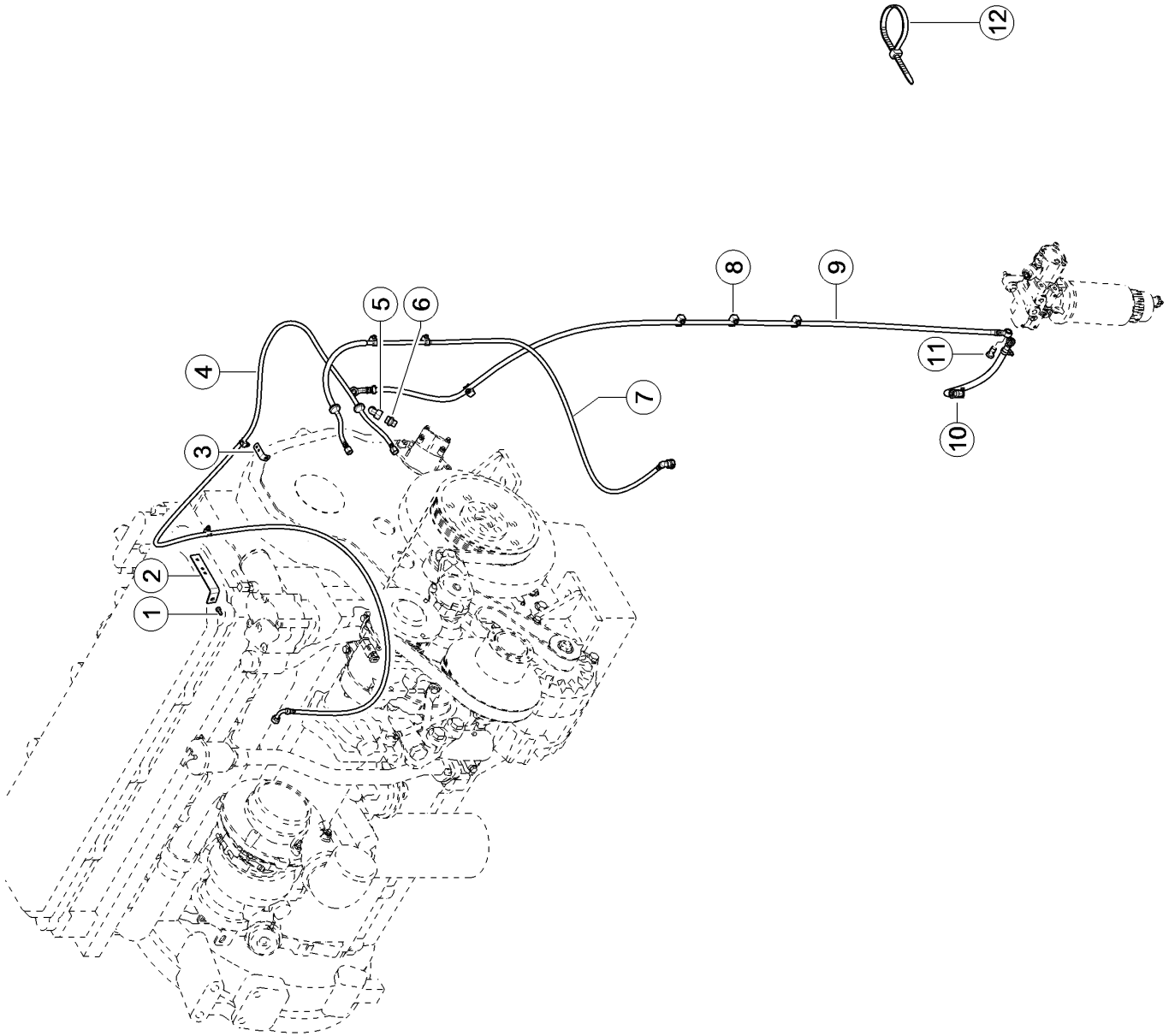
Pos.	Part No.	Description	Dimension	Quantity	Conditions
1	00 1804 006 3	CLUTCH	PS3-NW50-M76X6	1	2)
1	00 1805 150 0	CLUTCH		1	3)
1	00 1805 151 0	BRACKET	NQ PS3 NW5	1	4)
1	00 1805 152 0	O-RING	VERRIEGELUNG 56X4 VITON 60	1	4)
2	00 0505 956 1	O-RING	68,7 X 6	1	
3	00 0217 459 1	O-RING	27X4,0 -N	1	
4	00 0783 643 1	PLUG	WASSER + G3/8"	1	
5	00 0687 625 1	HEXAGON HEAD BOLT	M8X17 F. TANK	1	
6	00 0783 652 0	BALL-TYPE TAP	WASSERABLA DN8-I-G3/8XA-G3/8	1	
7	00 0216 366 0	O-RING	10,50X1,5 NBR80	1	
8	00 0783 644 1	ADAPTOR	G3/8"- 1/2" SAE J 20441		
9	00 1802 724 0	SOCKET		1	
10	00 1804 334 4	ADDITIONAL TANK		1	5)
11	00 1802 723 0	BLIND PLUG		1	
12	00 1804 387 1	FILLER TUBE	D58X1955	1	
13	00 1802 724 0	SOCKET		1	
14	00 0217 504 0	SCREW	K60X20-T25-WN1451	3	
15	00 0236 823 0	WASHER	6,5X30X3	3	
16	00 0798 863 0	CONNECTOR	NORMAQUICK S NW 1/2"-10-	2	
17	00 0216 413 0	1-EAR-CLAMP	16-18	2	6)
17	00 0238 269 0	2-EAR-CLAMP	15-18	2	7)
18	00 0236 200 0	HEXAGON HEAD BOLT	M8X20	3	
18	00 0239 387 0	CONTACT WASHER	A8-8,2X18X1,4	3	
18	00 0236 170 0	HEXAGONAL NUT	M8	3	
19	00 0238 250 0	GROMMET	A 24X30X3,5	2	7)
20	00 0236 200 0	HEXAGON HEAD BOLT	M8X20	2	
20	00 0239 393 1	CONTACT WASHER	B 8 -8.2X22X1,9	4	
20	00 0236 170 0	HEXAGONAL NUT	M8	2	
21	00 0505 859 1	TUBE	1420 HYB	1	7)
22	00 0205 524 2	HOSE	11X3,5 ROLLE, LSN	1	8)
22	00 0205 524 2	HOSE	11X3,5 ROLLE, LSN NOTWEN	1	9)
23	00 1804 091 3	HOSE		1	
23	00 0783 669 0	CONNECTOR	0°	1	
23	00 0783 670 0	CONNECTOR	90°	1	
25	00 0217 459 1	O-RING	27X4,0 -N	1	
26	00 0783 643 1	PLUG	WASSER + G3/8"	1	
27	00 0687 625 1	HEXAGON HEAD BOLT	M8X17 F. TANK	1	
28	00 0783 652 0	BALL-TYPE TAP	WASSERABLA DN8-I-G3/8XA-G3/8	1	
29	00 0216 366 0	O-RING	10,50X1,5 NBR80	1	
30	00 0783 644 1	ADAPTOR	G3/8"- 1/2" SAE J 20441		
31	00 0216 156 0	PIPE CLAMP	D1-19X20	4	
32	00 0236 171 0	HEXAGONAL NUT	M10	4	
33	00 1805 531 0	THREADED ROD	M10X485	1	
34	00 0238 316 0	LOCK NUT	M10	1	10)
34	00 0236 171 0	HEXAGONAL NUT	M10	1	11)
35	00 0239 394 1	CONTACT WASHER	B10	1	
36	00 0548 224 1	WASHER		1	
37	00 1804 335 2	SUPPORT TUBE		1	

110 ADITIONAL FUEL TANK 1)

Pos.	Part No.	Description	Dimension	Quantity	Conditions
38	00 0237 383 0	HEXAGON HEAD BOLT	M10X25	5	
39	00 0239 388 0	CONTACT WASHER	A10-10,2X22,25X1,6	5	
40	00 0237 383 0	HEXAGON HEAD BOLT	M10X25	2	
40	00 0239 388 0	CONTACT WASHER	A10-10,2X22,25X1,6	2	
40	00 0236 171 0	HEXAGONAL NUT	M10	2	
41	00 1805 023 2	SOCKET	D71X72 NORMA PS3 /WELLRO	2	12)
42	00 0214 039 1	CABLE RING	A 40X49X4	2	
43	00 0233 486 0	COACH BOLT	M 8X 35	5	
43	00 0239 387 0	CONTACT WASHER	A8-8,2X18X1,4	5	
43	00 0236 170 0	HEXAGONAL NUT	M8	5	
44	00 0215 083 0	HOLDER CLAMP	D1-30X25	5	
45	00 1805 040 3	FILLER TUBE	FUER 1420	1	13)
46	00 1815 973 0	SUPPORT	ZUSATZTANK 2X90,9X1500	1	6)

1) Equipment	MD_P14_0115	Fuel tank 1150 litres
2) machine no.		+ from C6501487 with Item 2
3) machine no.		+ up to C6501486 with Item 2
4) machine no.		+ from C6500011
5) Remarks		with Item 1, 2, 13
6) machine no.		+ from C6502234
7) machine no.		+ up to C6502233
8) machine no.		+ from C6500091 4470 mm long
9) machine no.		+ up to C6500090 4770 mm long
10) machine no.		+ from C6500091
11) machine no.		+ up to C6500090
12) machine no.		+ up to C6501486
13) Remarks		with Item 41

E0245 0125A140A 1



Thank you so much for reading.
Please click the “Buy Now!”
button below to download the
complete manual.



After you pay.

You can download the most
perfect and complete manual in
the world immediately.

Our support email:

ebooklibonline@outlook.com