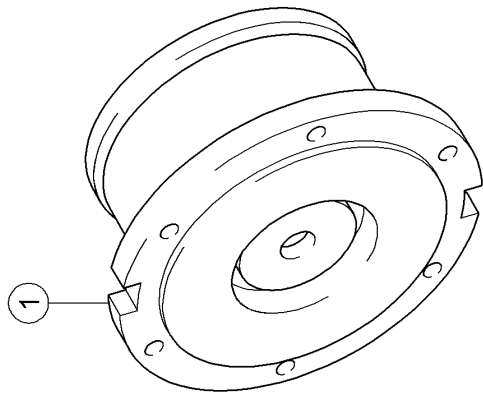


E0388 0215A200A 1

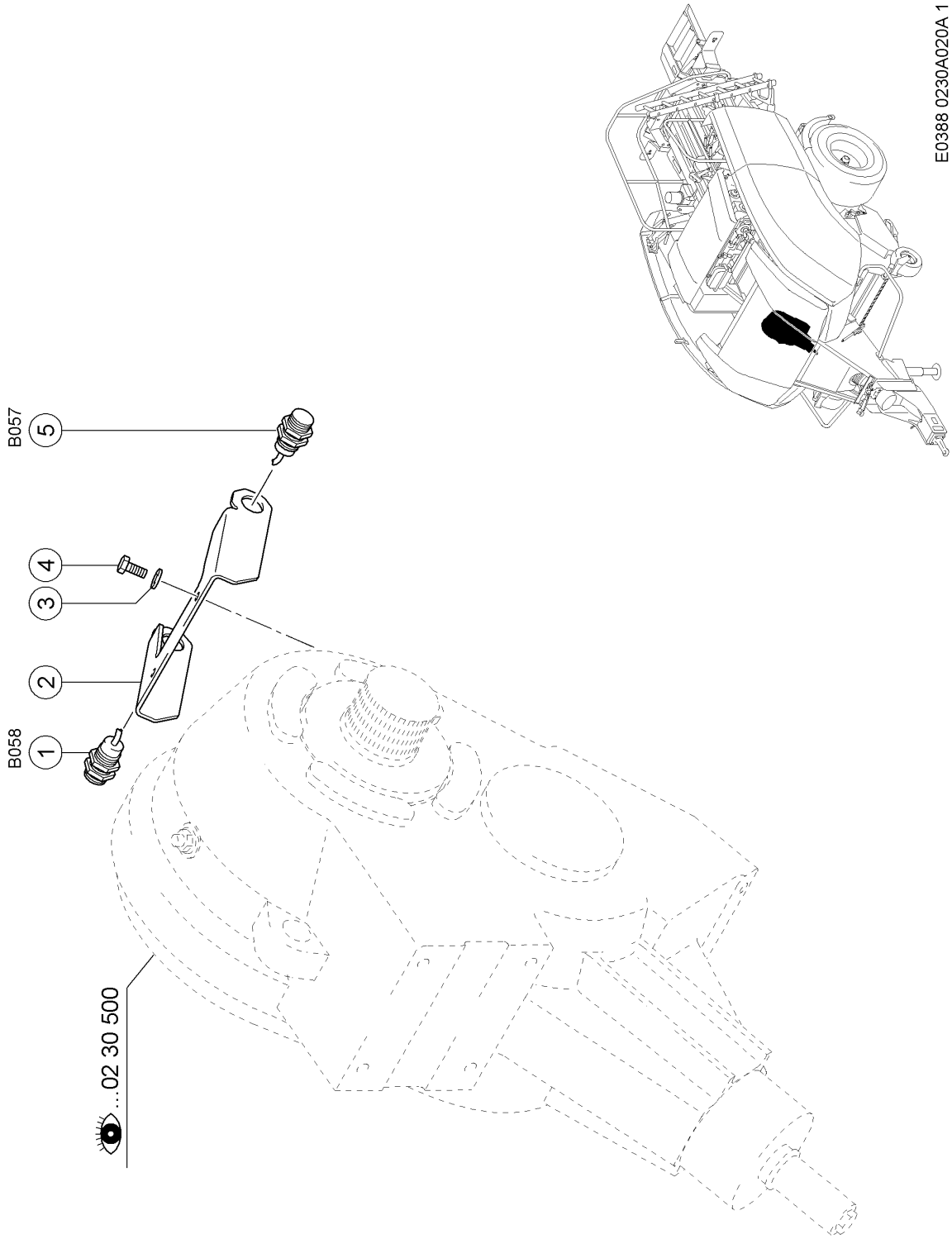
200 OVERLOAD CLUTCH

Pos.	Part No.	Description	Dimension	Quantity	Conditions
1	00 0831 548 0	FRICITION CLUTCH		1	
2	00 0941 099 0	ADJUSTING RING		1	
3	00 0830 296 0	SPRING KIT		1	
4	00 0941 104 1	FRICITION PLATE		4	
5	00 0941 106 0	DRIVE PLATE		1	
6	00 0941 107 0	DRIVE PLATE		1	
7	00 0921 795 0	SEALING RING		1	
8	00 0237 597 0	CIRCLIP	60X2	2	
9	00 0211 846 0	GRVD.BALL BEARING	61812	2	
10	00 0921 796 0	BACK-UP WASHER		2	
11	00 0817 305 0	HUB		1	
12	00 0814 229 0	FLAT SPRING		2	
13	00 0814 228 0	STOP KEY		2	
14	00 0921 794 1	COUPLER		1	
15	00 0238 277 2	SHAFT SEAL	AS 55X 80X 8	1	
16	00 0941 110 0	RING		1	
17	00 0814 766 1	CLUTCH HOUSING		1	



200 OVERLOAD CLUTCH

Pos.	Part No.	Description	Dimension	Quantity	Conditions
1	00 1330 408 0	CLUTCH		1	



020 MAIN DRIVE SENSOR 1)

Pos.	Part No.	Description	Dimension	Quantity	Conditions
1	00 0835 368 0	SPACER SENSOR	M30X1, 5/M12/5-10MM (ROHS)	1	2)
2	00 1330 498 0	SUPPORT		1	
3	00 0239 389 0	CONTACT WASHER	A12	2	
4	00 0237 461 0	HEXAGON HEAD BOLT	M12X30	2	
5	00 0835 368 0	SPACER SENSOR	M30X1, 5/M12/5-10MM (ROHS)	1	3)

1) Equipment

PR_Q05_0030

Right/left display

2) CCN

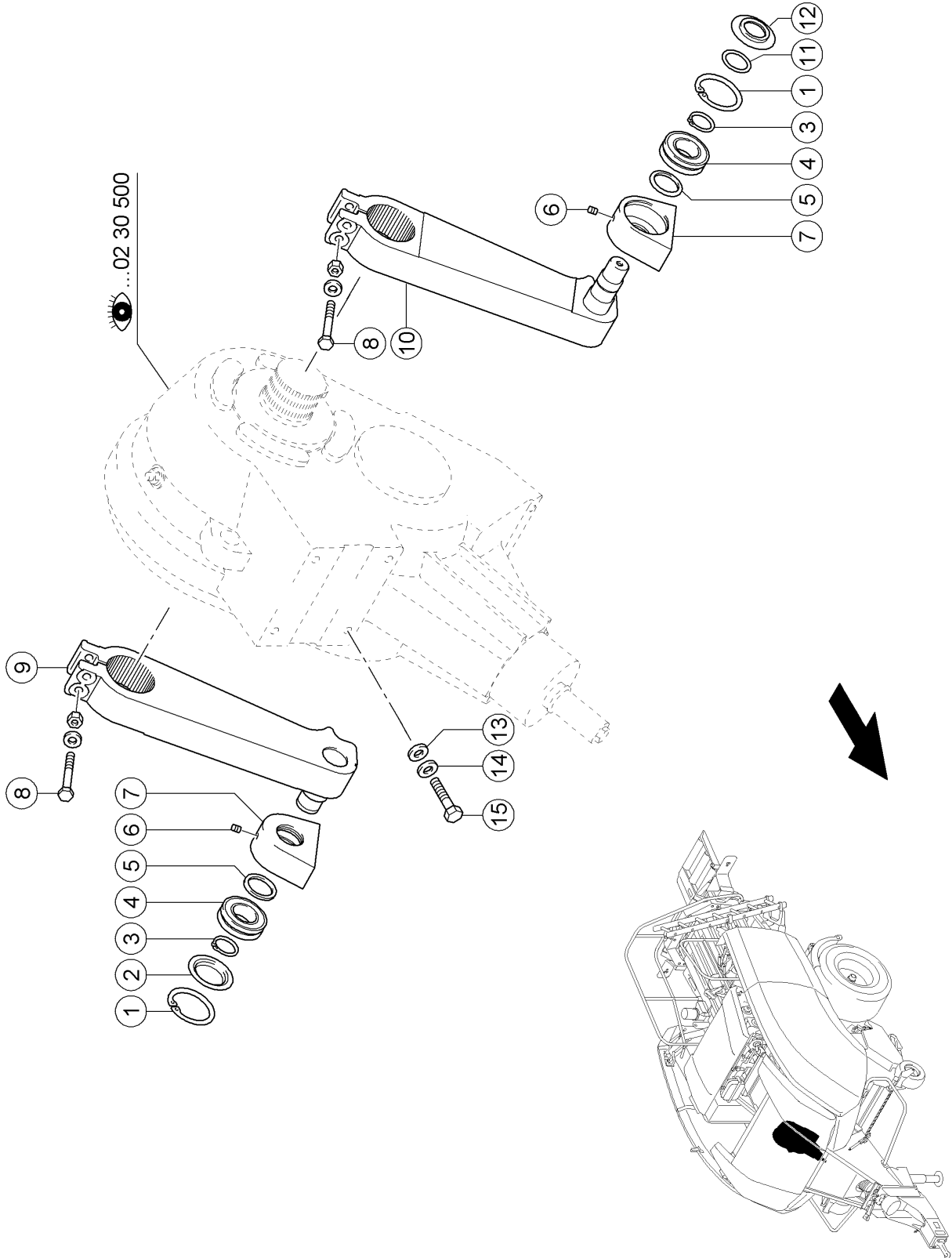
CCN-B058

R/H ram load indicator sensor

3) CCN

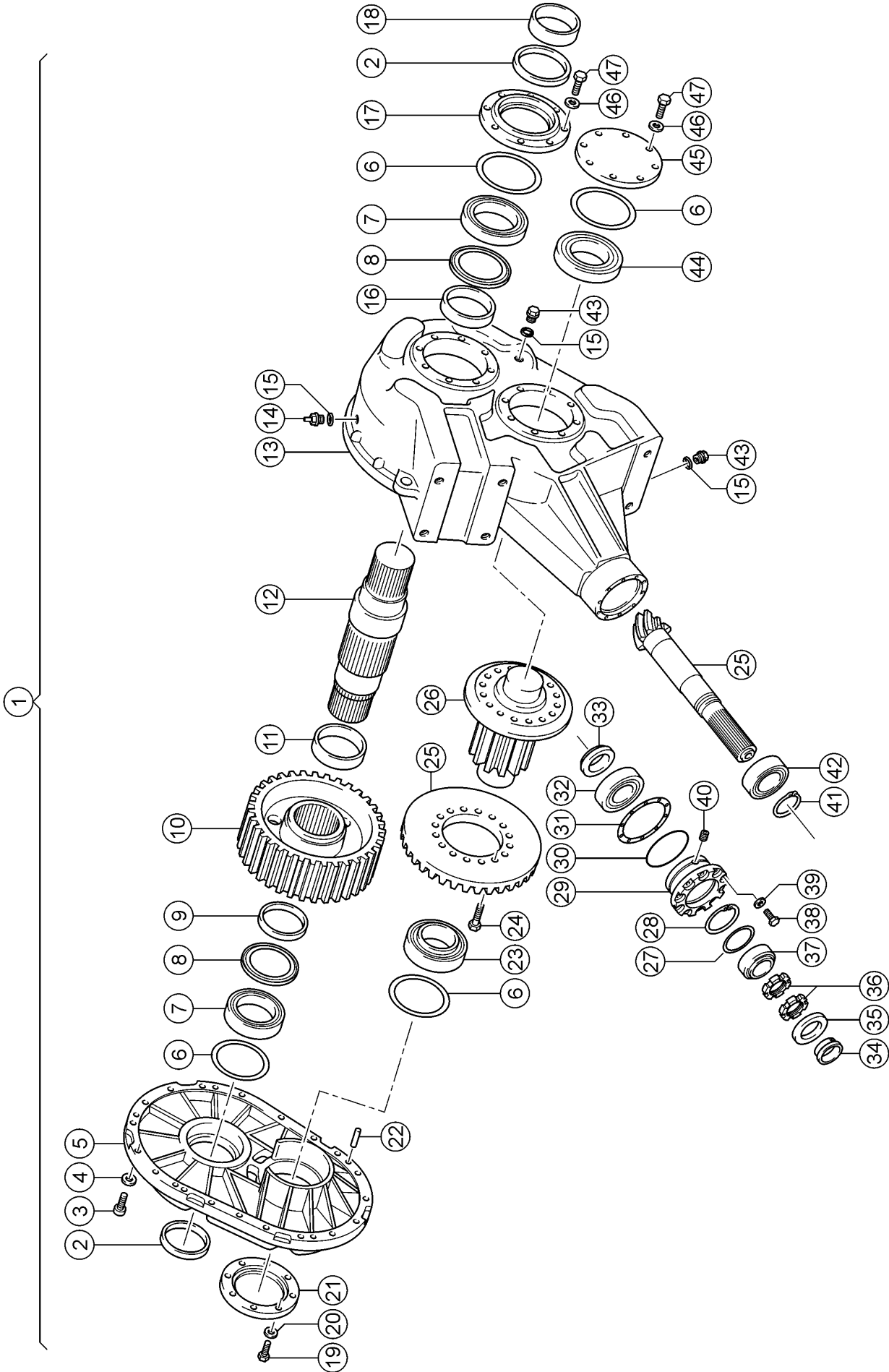
CCN-B057

L/H ram load indicator sensor



500 MAIN GEARBOX

Pos.	Part No.	Description	Dimension	Quantity	Conditions
1	00 0236 318 0	CIRCLIP	80X2,5	2	
2	00 0810 710 0	COVER	D80X11	1	
3	00 0244 058 0	CIRCLIP	40X2,5	2	
4	00 0238 280 3	SPHERICAL ROLLER BEARING	22208	2	
5	00 0215 320 0	FELT RING	E/S-C3-40X80X23 57X45XD.X5 MM	2	
6	00 0239 213 0	SCREW PLUG	M 8X1	2	
7	00 0774 749 0	BEARING SUPPORT	120X100X50	2	
8	00 0244 391 0	HEXAGON HEAD BOLT	M12X95	4	
8	00 0239 389 0	CONTACT WASHER	A12	4	
8	00 0236 172 0	HEXAGONAL NUT	M12	4	
9	00 0774 746 0	CRANK ARM ASS.		1	
10	00 0774 745 0	CRANK ARM ASS.		1	
11	00 0244 652 0	FELT RING	40	1	
12	00 0830 160 1	RING	D79,8X16,5	1	
13	00 0238 990 0	WASHER	Ø16,5 X Ø33,5 - 1X5	6	
14	00 0239 391 0	CONTACT WASHER	A16	6	
15	00 0215 352 0	HEX.HEAD BOLT	M16X1,5X 45-MKL	6	

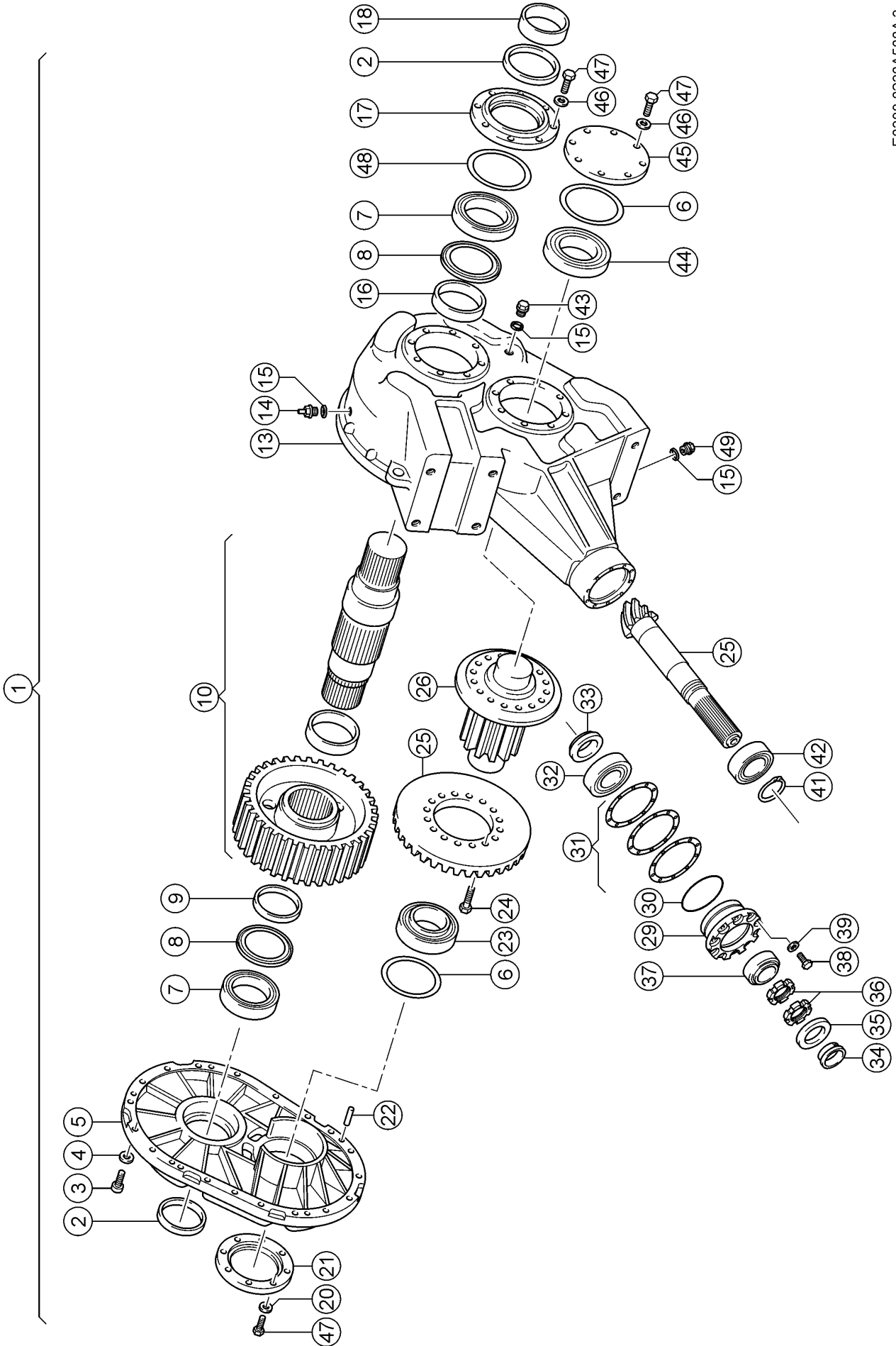


500 MAIN GEARBOX

Pos.	Part No.	Description	Dimension	Quantity	Conditions
1	00 0831 225 1	MAIN GEARBOX ASS.	KOMPLETT	1	1)
1	00 0831 226 3	MAIN GEARBOX		1	2)
2	00 0212 689 0	SHAFT SEAL	AS 100X120X12	2	3)
3	00 0242 263 0	SOCKET HEAD SCREW	M12X 45(CN 200052)REF.02	19	3)
4	00 0242 824 1	WASHER	12 -12,2X18,3X2,5	19	3)
5	00 0830 694 0	HOUSING COVER		1	3)
6	00 0213 606 0	SHIM	125X139X2	2	3)
6	00 0215 932 1	SHIM	118X140X1	1	3)
6	00 0215 786 2	SHIM	118X140X0,3	3	3)
6	00 0215 785 2	SHIM	118X140X0,5	3	3)
7	00 0215 782 0	CY.ROLLER BEARING	NCF 2920 V	2	3)
8	00 0215 783 0	BEARING SEAL RING	619 20 AV	2	3)
9	00 0830 763 0	BUSHING		1	3)
10	00 0830 699 0	SPUR GEAR		1	3)
11	00 0830 761 0	BUSHING		1	3)
12	00 0830 760 0	PROFILE SHAFT		1	3)
13	00 0830 693 3	GEARBOX HOUSING		1	3)
14	00 0817 304 0	BREATHER VALVE	M18X1,5	1	3)
15	00 0238 533 1	SEALING RING	C18 X22	3	3)
16	00 0830 762 0	BUSHING		1	3)
17	00 0830 697 0	HOUSING COVER		1	3)
18	00 0212 641 0	INNER RING	IR 90X100X30	1	3)
19	00 0238 976 0	HEXAGON HEAD BOLT	M10X35	8	3)
20	00 0235 133 1	SPRING WASHER	10 -10,2X18,1X1,8	8	3)
21	00 0830 695 0	HOUSING COVER		1	3)
22	00 0215 784 0	SPRING PIN	12 X 40	6	3)
23	00 0215 781 0	TA.ROLLER BEARING	33216-80X140X46	1	3)
24	00 0235 553 0	HEXAGON HEAD BOLT	M12X45	16	3)
25	00 0831 341 0	PINION		1	3)
26	00 0830 698 0	PINION SHAFT		1	3)
27	00 0211 098 0	SHIM	S 68X79,5X3	1	3)
28	00 0236 318 0	CIRCLIP	80X2,5	1	3)
29	00 0831 229 2	COVER	D140X65	1	3)
30	00 0213 843 0	O-RING	104 X3 -N	1	3)
31	00 0813 176 1	SHIM	111 X140 X0,15	1	3)
31	00 0813 177 0	SHIM	111X140X0,5	2	3)
31	00 0813 178 0	SHIM	111X140X0,6	1	3)
31	00 0813 179 0	SHIM	111X140X0,8	1	3)
31	00 0813 180 1	SHIM	111 X140 X0,9	1	3)
32	00 0243 695 0	TA.ROLLER BEARING	31310 J2/QCL7C	1	3)
33	00 0813 174 0	RING	D80X15	1	3)
34	00 0831 230 0	BUSHING	D55X23,5	1	3)
35	00 0212 113 0	SHAFT SEAL	A 50X90X10	1	3)
36	00 0179 845 0	SLOTTED NUT	M50X1,5	2	3)
37	00 0236 008 0	TA.ROLLER BEARING	32010 X -50X80X20	10	3)
38	00 0215 009 0	HEXAGON HEAD BOLT	M8X1X 25	10	3)
39	00 0235 132 1	SPRING WASHER	8 -8,1X14,8X1,6	10	3)
40	00 0090 121 0	SCREW PLUG	M16X1,5	1	3)
41	00 0243 044 0	CIRCLIP	55X2	1	3)
42	00 0215 774 0	SPHERICAL ROLLER BEARING	22211 E/C3	1	3)
43	00 0244 352 0	SCREW PLUG	M18X1,5	2	3)
44	00 0243 678 0	TA.ROLLER BEARING	T3EC080-80X140X35, 25	1	3)

500 MAIN GEARBOX

Pos.	Part No.	Description	Dimension	Quantity	Conditions
45	00 0830 696 0	HOUSING COVER		1	3)
46	00 0235 133 1	SPRING WASHER	10 -10,2X18,1X1,8	16	3)
47	00 0235 530 0	HEX.HEAD BOLT	M10X30	16	3)
1)	machine no.		+ up to 77300236 with crank arms		
2)	machine no.		+ up to 77300236 without crank arms		
3)	machine no.		+ up to 77300236		



500 MAIN GEARBOX

Pos.	Part No.	Description	Dimension	Quantity	Conditions
1	00 0831 225 1	MAIN GEARBOX ASS.	KOMPLETT	1	1)
1	00 0831 226 4	MAIN GEARBOX		1	2)
2	00 0212 689 0	SHAFT SEAL	AS 100X120X12	2	3)
3	00 0242 263 0	SOCKET HEAD SCREW	M12X 45(CN 200052)REF.02	19	3)
4	00 0242 824 1	WASHER	12 -12,2X18,3X2,5	19	3)
5	00 0869 973 0	HOUSING COVER		1	3)
6	00 0869 975 0	KIT PASS-SCHEIBE		2	3)
7	00 0215 782 0	CY.ROLLER BEARING	NCF 2920 V	2	3)
8	00 0215 783 0	BEARING SEAL RING	619 20 AV	2	3)
9	00 0830 763 0	BUSHING		1	3)
10	00 0869 976 0	SPUR GEAR		1	3)
13	00 0830 693 3	GEARBOX HOUSING		1	3)
14	00 0817 304 0	BREATHER VALVE	M18X1,5	1	3)
15	00 0238 533 1	SEALING RING	C18 X22	3	3)
16	00 0830 762 0	BUSHING		1	3)
17	00 0830 697 0	HOUSING COVER		1	3)
18	00 0212 641 0	INNER RING	IR 90X100X30	1	3)
20	00 0235 133 1	SPRING WASHER	10 -10,2X18,1X1,8	8	3)
21	00 0869 972 0	HOUSING COVER		1	3)
22	00 0215 784 0	SPRING PIN	12 X 40	6	3)
23	00 0215 781 0	TA.ROLLER BEARING	33216-80X140X46	1	3)
24	00 0235 553 0	HEXAGON HEAD BOLT	M12X45	16	3)
25	00 0831 341 0	PINION		1	3)
26	00 0830 698 0	PINION SHAFT		1	3)
29	00 0869 971 0	COVER	D140X65	1	3)
30	00 0213 843 0	O-RING	104 X3 -N	1	3)
31	00 0869 977 0	KIT PASS-SCHEIBE		1	3)
32	00 0243 695 0	TA.ROLLER BEARING	31310 J2/QCL7C	1	3)
33	00 0813 174 0	RING	D80X15	1	3)
34	00 0831 230 0	BUSHING	D55X23,5	1	3)
35	00 0212 113 0	SHAFT SEAL	A 50X90X10	1	3)
36	00 0179 845 0	SLOTTED NUT	M50X1,5	2	3)
37	00 0236 008 0	TA.ROLLER BEARING	32010 X -50X80X20	10	3)
38	00 0215 009 0	HEXAGON HEAD BOLT	M8X1X 25	10	3)
39	00 0235 132 1	SPRING WASHER	8 -8,1X14,8X1,6	10	3)
41	00 0243 044 0	CIRCLIP	55X2	1	3)
42	00 0215 774 0	SPHERICAL ROLLER BEARING	22211 E/C3	1	3)
43	00 0869 978 0	SCREW PLUG	C-M18X1,5-PM	2	3)
44	00 0243 678 0	TA.ROLLER BEARING	T3EC080-80X140X35, 25	1	3)
45	00 0830 696 0	HOUSING COVER		1	3)
46	00 0235 133 1	SPRING WASHER	10 -10,2X18,1X1,8	16	3)
47	00 0235 530 0	HEX.HEAD BOLT	M10X30	24	3)
48	00 0869 974 0	SHIM	125X139X2	1	3)
49	00 0869 979 0	SCREW PLUG	M18X1,5	1	3)

1)	machine no.	+ from 77300237 with crank arms
2)	machine no.	+ from 77300237 without crank arms
3)	machine no.	+ from 77300237

504 FLYWHEEL

Pos.	Part No.	Description	Dimension	Quantity	Conditions
1	00 0215 455 0	HEXAGON HEAD BOLT	M12X60-MKL	3	
2	00 0239 389 0	CONTACT WASHER	A12	3	
3	00 0233 244 0	HEXAGON HEAD BOLT	M12X40-MKL	3	
4	00 0242 824 1	WASHER	12 -12,2X18,3X2,5	3	
5	00 1330 978 0	FLYWHEEL	T773	1	
6	00 0213 774 0	CIRCLIP	170X4	1	

Thank you so much for reading.
Please click the “Buy Now!”
button below to download the
complete manual.



After you pay.

You can download the most
perfect and complete manual in
the world immediately.

Our support email:

ebooklibonline@outlook.com