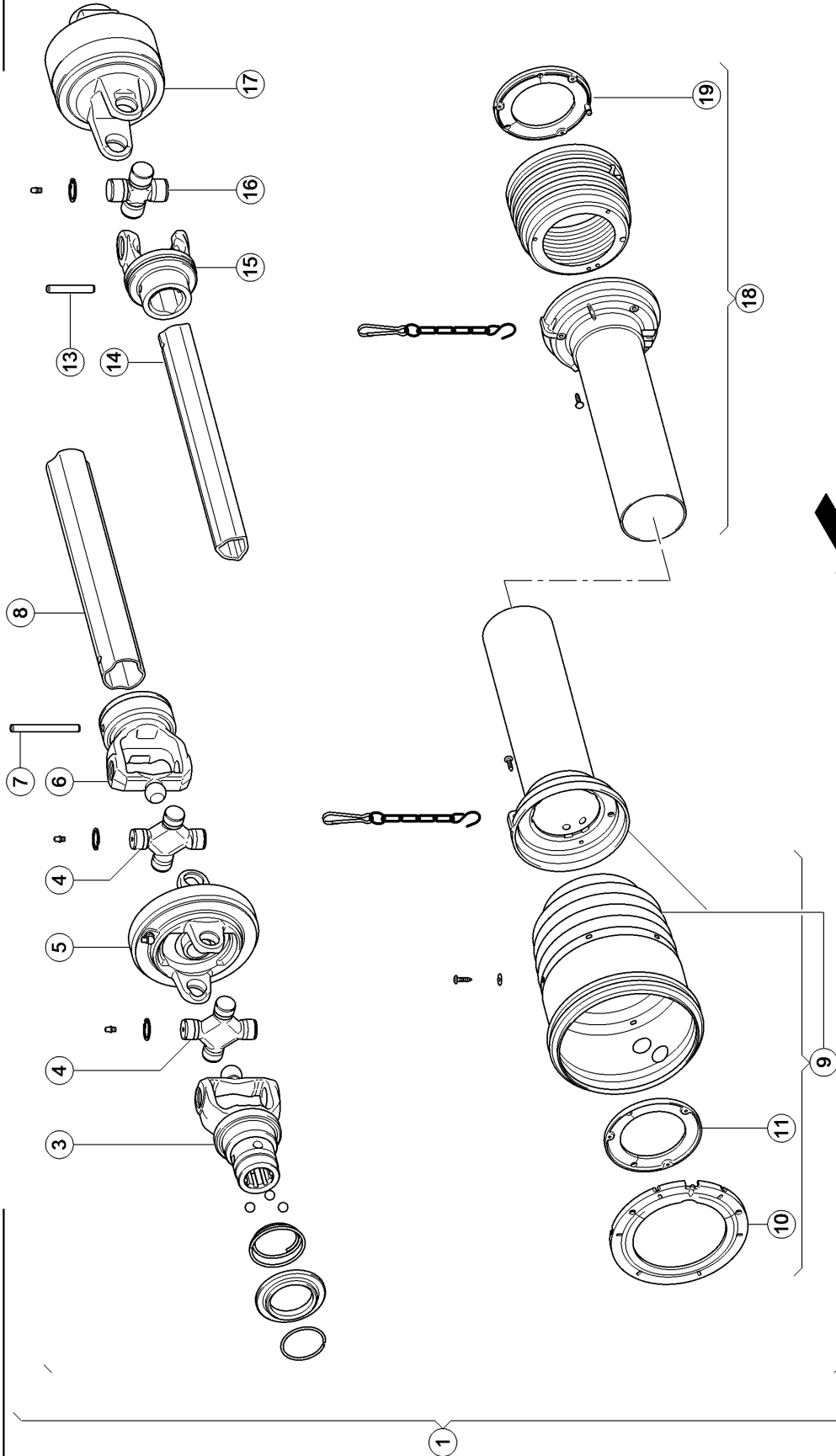


# 3

# CLAAS



61846z00  
ROLLANT UNIWRAP 355

150183

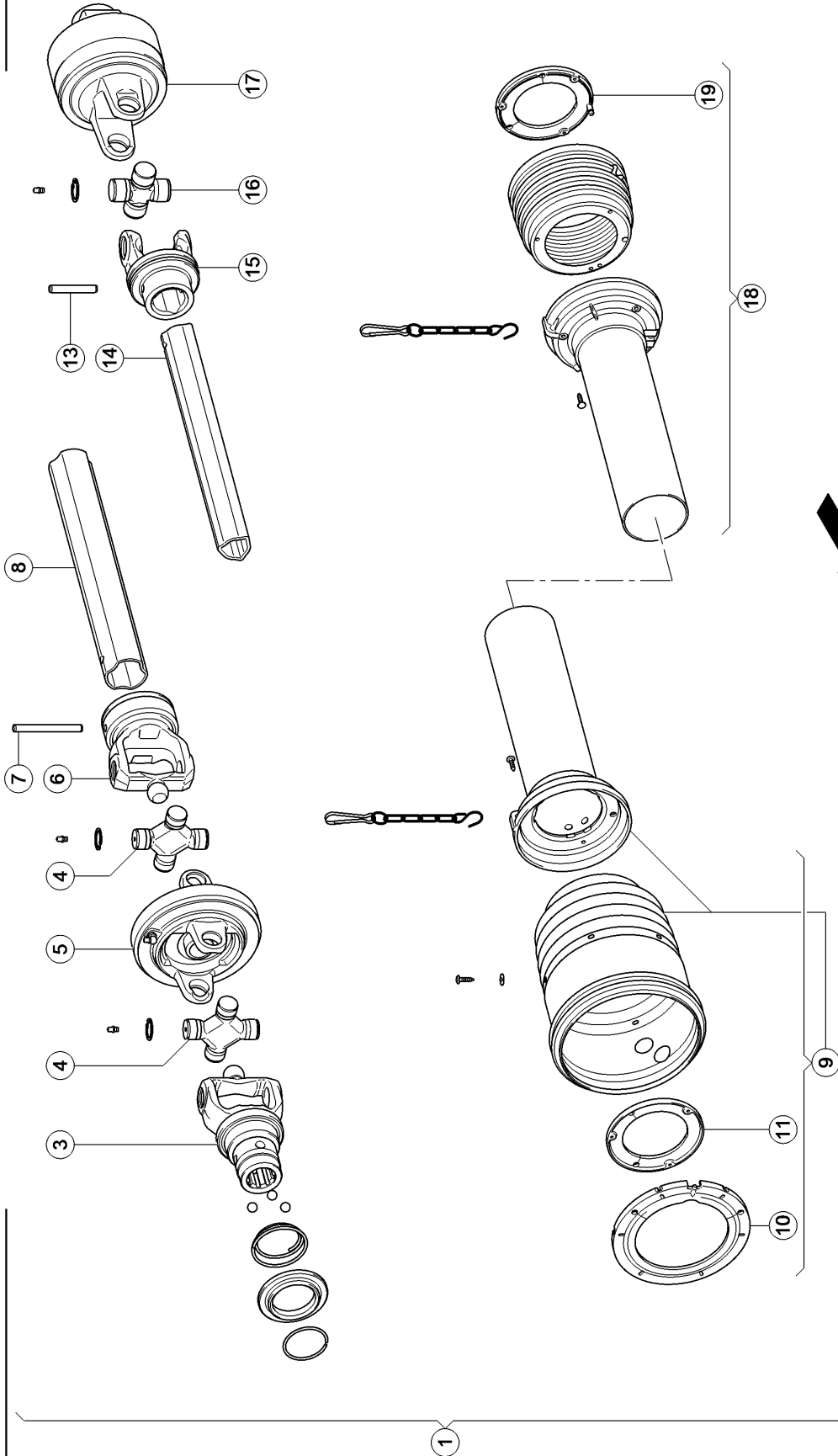
**UNIVERSAL DRIVE SHAFT WITH CUT - OUT CLU 1)**

Pos.	Part No.	Description	Dimension	Quantity	Conditions
1	<b>00 0843 702 0</b>	DRIVE SHAFT ASSY.		1	
3	<b>00 0843 764 0</b>	FORK		1	
4	<b>00 0843 765 0</b>	CENTRE CROSS ASS.		2	
5	<b>00 0843 767 0</b>	FORK		1	
6	<b>00 0843 766 0</b>	INNER FORK		1	
7	<b>00 0234 862 0</b>	SPRING PIN	10 X100	1	
8	<b>00 0843 768 0</b>	TUBE		1	
9	<b>00 0843 762 0</b>	GUARD HALF		1	2)
10	<b>00 0844 557 0</b>	RING		1	
11	<b>00 0844 558 0</b>	RING		1	
13	<b>00 0244 579 0</b>	SPRING PIN	10X65	1	
14	<b>00 0843 773 0</b>	TUBE		1	
15	<b>00 0843 772 0</b>	FORK		1	
16	<b>00 0843 771 0</b>	CENTRE CROSS ASS.		1	
17	<b>00 0843 778 0</b>	CLUTCH		1	3)
18	<b>00 0843 763 0</b>	GUARD HALF		1	4)
19	<b>00 0836 346 0</b>	RING		1	

<b>1)</b>	<b>Remarks</b>	m 04 / 60 = 6-Tlg. 1900 Nm
<b>2)</b>	<b>Remarks</b>	with Item 10. 11
<b>3)</b>	<b>Remarks</b>	see illustration 5b
<b>4)</b>	<b>Remarks</b>	with Item 19

**3A**

**CLAAS**



61847Z00  
ROLLANT UNIWRAP 355

150184

**UNIVERSAL DRIVE SHAFT WITH CUT - OUT CLU 1)**

Pos.	Part No.	Description	Dimension	Quantity	Conditions
1	<b>00 0843 703 0</b>	DRIVE SHAFT		1	2)
1	<b>00 0843 704 0</b>	DRIVE SHAFT ASSY.		1	3)
3	<b>00 0843 764 0</b>	FORK		1	2)
3	<b>00 0843 792 0</b>	FORK		1	3)
4	<b>00 0843 765 0</b>	CENTRE CROSS ASS.		2	
5	<b>00 0843 767 0</b>	FORK		1	
6	<b>00 0843 766 0</b>	INNER FORK		1	
7	<b>00 0234 862 0</b>	SPRING PIN	10 X100	1	
8	<b>00 0843 768 0</b>	TUBE		1	
9	<b>00 0843 762 0</b>	GUARD HALF		1	4)
10	<b>00 0844 557 0</b>	RING		1	
11	<b>00 0844 558 0</b>	RING		1	
13	<b>00 0244 579 0</b>	SPRING PIN	10X65	1	
14	<b>00 0843 773 0</b>	TUBE		1	
15	<b>00 0843 772 0</b>	FORK		1	
16	<b>00 0843 771 0</b>	CENTRE CROSS ASS.		1	
17	<b>00 0843 789 0</b>	CLUTCH		1	5)
18	<b>00 0843 763 0</b>	GUARD HALF		1	6)
19	<b>00 0836 346 0</b>	RING		1	

**1) Remarks**

m 04/170 1350 Nm / 6-Tlg.  
m 04/180 1350 Nm / 21-Tlg.

**2) Remarks**

6 piece

**3) Remarks**

21 piece

**4) Remarks**

with Item 10. 11

**5) Remarks**

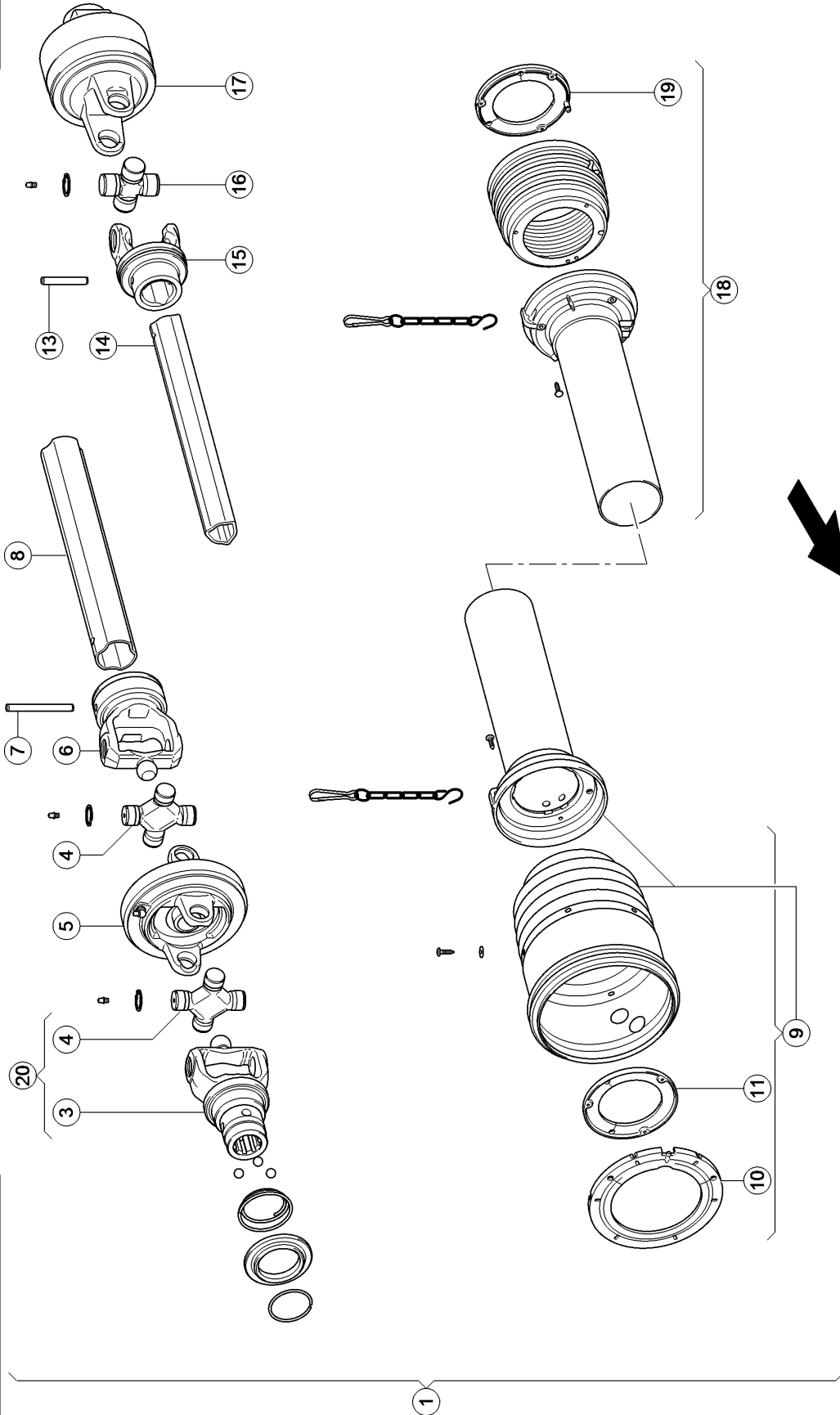
see illustration 5c

**6) Remarks**

with Item 19

**3B**

**CLAAS**



61848z02

**UNIVERSAL DRIVE SHAFT WITH CUT - OUT CLU 1)**

Pos.	Part No.	Description	Dimension	Quantity	Conditions
1	<b>00 0843 752 0</b>	DRIVE SHAFT ASSY.		1	
3	<b>00 0843 775 0</b>	FORK		1	
4	<b>00 0843 765 0</b>	CENTRE CROSS ASS.		2	
5	<b>00 0843 767 0</b>	FORK		1	
6	<b>00 0843 766 0</b>	INNER FORK		1	
7	<b>00 0234 862 0</b>	SPRING PIN	10 X100	1	
8	<b>00 0843 768 0</b>	TUBE		1	
9	<b>00 0866 429 0</b>	GUARD		1	2)
10	<b>00 0844 557 0</b>	RING		1	
11	<b>00 0844 558 0</b>	RING		1	
13	<b>00 0244 579 0</b>	SPRING PIN	10X65	1	
14	<b>00 0843 773 0</b>	TUBE		1	
15	<b>00 0843 772 0</b>	FORK		1	
16	<b>00 0843 771 0</b>	CENTRE CROSS ASS.		1	
17	<b>00 0843 778 0</b>	CLUTCH		1	3)
18	<b>00 0843 763 0</b>	GUARD HALF		1	4)
19	<b>00 0836 346 0</b>	RING		1	
20	<b>00 0139 008 0</b>	SEMI-SHAFT		1	

<b>1) Remarks</b>	m 04 / 70 = 8-Tlg 2100 Nm
-------------------	---------------------------

<b>2) Remarks</b>	with Item 10. 11
-------------------	------------------

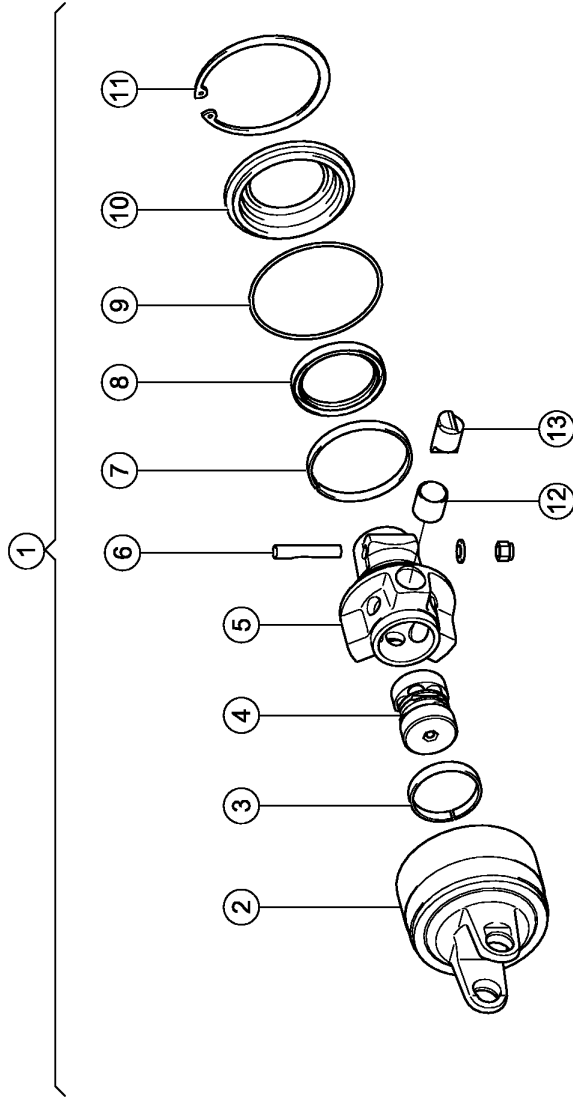
<b>3) Remarks</b>	see illustration 5b
-------------------	---------------------

<b>4) Remarks</b>	with Item 19
-------------------	--------------

**5B**

**CLAAS**

ROLLANT 375/355 UNIWRAP



61849Z00  
ROLLANT UNIWRAP 355

150186

**CAM - TYPE CUT - OUT CLUTCH 1)**

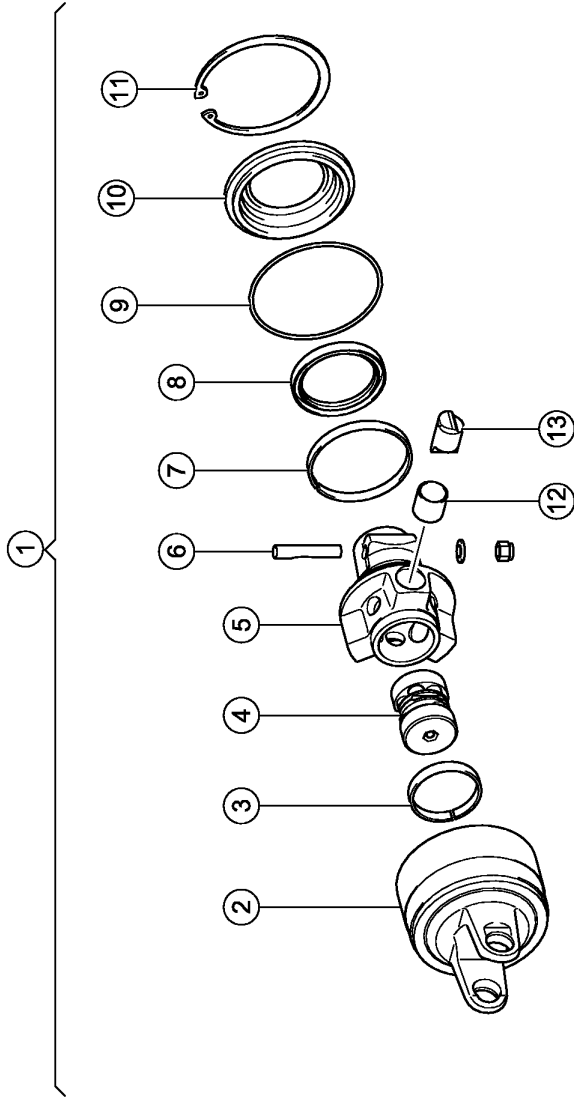
<b>Pos.</b>	<b>Part No.</b>	<b>Description</b>	<b>Dimension</b>	<b>Quantity</b>	<b>Conditions</b>
1	<b>00 0843 778 0</b>	CLUTCH		1	
2	<b>00 0843 779 0</b>	CLUTCH HOUSING		1	
3	<b>00 0836 414 0</b>	RING		1	
4	<b>00 0843 780 1</b>	SPRING KIT		1	
5	<b>00 0843 781 0</b>	HUB		1	
6	<b>00 0843 782 0</b>	CLAMPING SCREW		1	
7	<b>00 0843 783 0</b>	RING		1	
8	<b>00 0843 784 0</b>	SEALING RING		1	
9	<b>00 0843 785 0</b>	O-RING		1	
10	<b>00 0843 786 0</b>	COVER		1	
11	<b>00 0214 628 0</b>	CIRCLIP	138X4	1	
12	<b>00 0836 417 0</b>	BUSHING		3	
13	<b>00 0836 416 0</b>	BLOCK, BODY		3	
<b>1)</b>	<b>Remarks</b>	540 U/Min - 2100 Nm			



5C

CLAAS

ROLLANT 375/355 UNIWRAP



61850Z00  
ROLLANT UNIWRAP 355

150187

**CAM - TYPE CUT - OUT CLUTCH 1)**

Pos.	Part No.	Description	Dimension	Quantity	Conditions
1	<b>00 0843 789 0</b>	CLUTCH		1	
2	<b>00 0843 779 0</b>	CLUTCH HOUSING		1	
3	<b>00 0836 414 0</b>	RING		1	
4	<b>00 0843 790 1</b>	SPRING KIT		1	
5	<b>00 0843 781 0</b>	HUB		1	
6	<b>00 0843 782 0</b>	CLAMPING SCREW		1	
7	<b>00 0843 783 0</b>	RING		1	
8	<b>00 0843 784 0</b>	SEALING RING		1	
9	<b>00 0843 785 0</b>	O-RING		1	
10	<b>00 0843 786 0</b>	COVER		1	
11	<b>00 0214 628 0</b>	CIRCLIP	138X4	1	
12	<b>00 0836 417 0</b>	BUSHING		3	
13	<b>00 0836 416 0</b>	BLOCK, BODY		3	

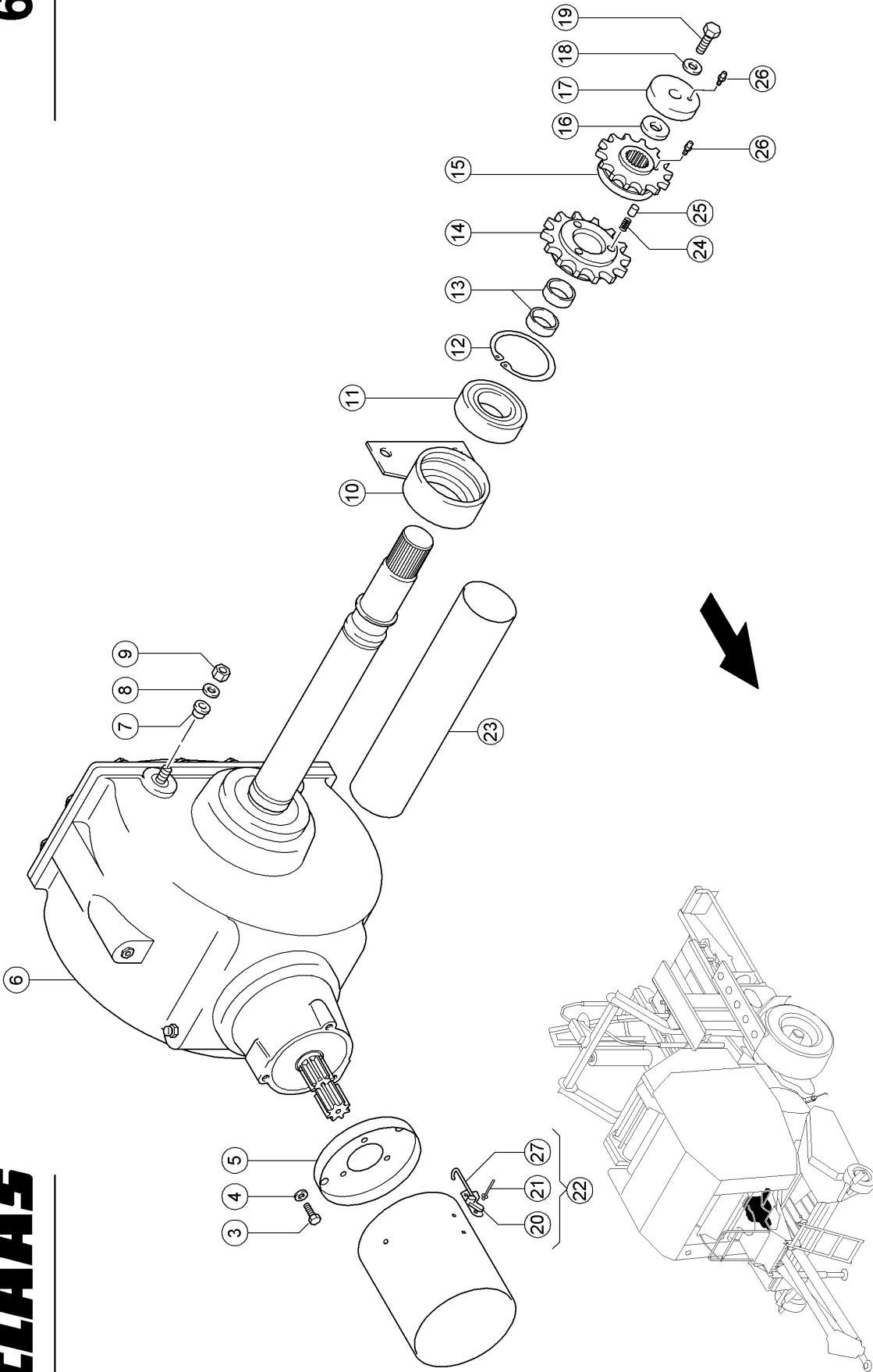
**1) Remarks**

1000 U/Min - 1350 Nm

6

**CLAAS**

61851Z01



**GEARBOX WIT INTERMEDIATE DRIVE ASSY**

Pos.	Part No.	Description	Dimension	Quantity	Conditions
3	<b>00 0237 439 0</b>	HEXAGON HEAD BOLT	M8X16	3	
4	<b>00 0239 387 0</b>	CONTACT WASHER	A8-8,2X18X1,4	3	
5	<b>00 0843 463 0</b>	GUARD CUP	D206X1.5	1	
6	<b>00 0858 470 0</b>	GEARBOX	I=2,5	1	1)
6	<b>00 0858 469 0</b>	GEARBOX	I:1/4,33	1	2)
7	<b>00 0810 117 0</b>	BUSHING	D30X20	2	
8	<b>00 0239 389 0</b>	CONTACT WASHER	A12	2	
9	<b>00 0236 172 0</b>	HEXAGONAL NUT	M12	2	
10	<b>00 0860 020 0</b>	BEARING		1	
11	<b>00 0238 782 3</b>	GRVD.BALL BEARING	6311-2RS-C4-55X120 X29	1	
12	<b>00 0243 063 0</b>	CIRCLIP	120X4	1	
13	<b>00 0945 677 0</b>	BUSHING	55X60X20 109985	2	
14	<b>00 0860 414 0</b>	SPROCKET		1	3)
15	<b>00 0860 412 0</b>	SPROCKET		1	4)
16	<b>00 0238 203 0</b>	WASHER	16,5X33X1	1	
17	<b>00 0837 347 0</b>	WASHER	17X62X6	1	
18	<b>00 0239 391 0</b>	CONTACT WASHER	A16	1	
19	<b>00 0235 821 0</b>	HEXAGON HEAD BOLT	M16X40	1	
20	<b>00 0822 996 0</b>	PROTECT.TUBE CPL.		1	
21	<b>00 0237 922 1</b>	BLIND RIVET	A 4X12	4	
22	<b>00 0822 998 1</b>	LOCK		2	
23	<b>00 0851 984 0</b>	PROTECTIVE TUBE		1	5)
23	<b>00 0837 364 0</b>	PROTECTIVE TUBE		1	6)
24	<b>00 0845 024 0</b>	COMPRESS.SPRING	0,8X9X61	3	
25	<b>00 0845 023 0</b>	PIN	D14,85X36,7	3	
26	<b>00 0236 942 0</b>	GREASE NIPPLE	A S6X1	2	

**1) Remarks** see illustration plate 8A

**2) Remarks** see illustration plate 8b

**3) Remarks** with Item 13

**4) Remarks** with Item 26

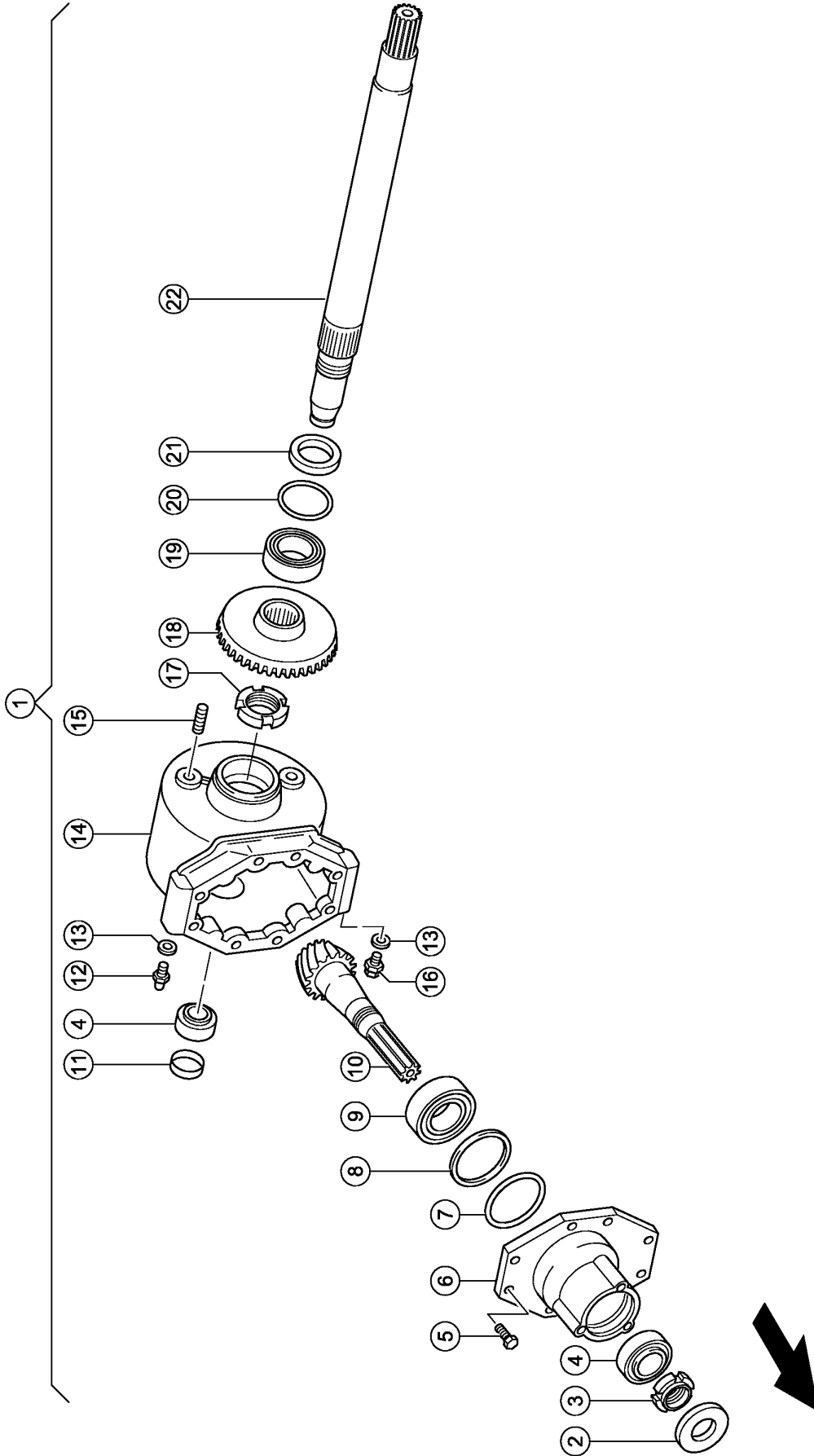
**5) machine no.** + from 76601089

**6) machine no.** + up to 76601088

**CLAAS**

**8A**

**WALTERSCHEID**



6185Z00  
ROLLANT UNIWRAP 355

150189

**ANGLE DRIVE, 540 RPM 1)**

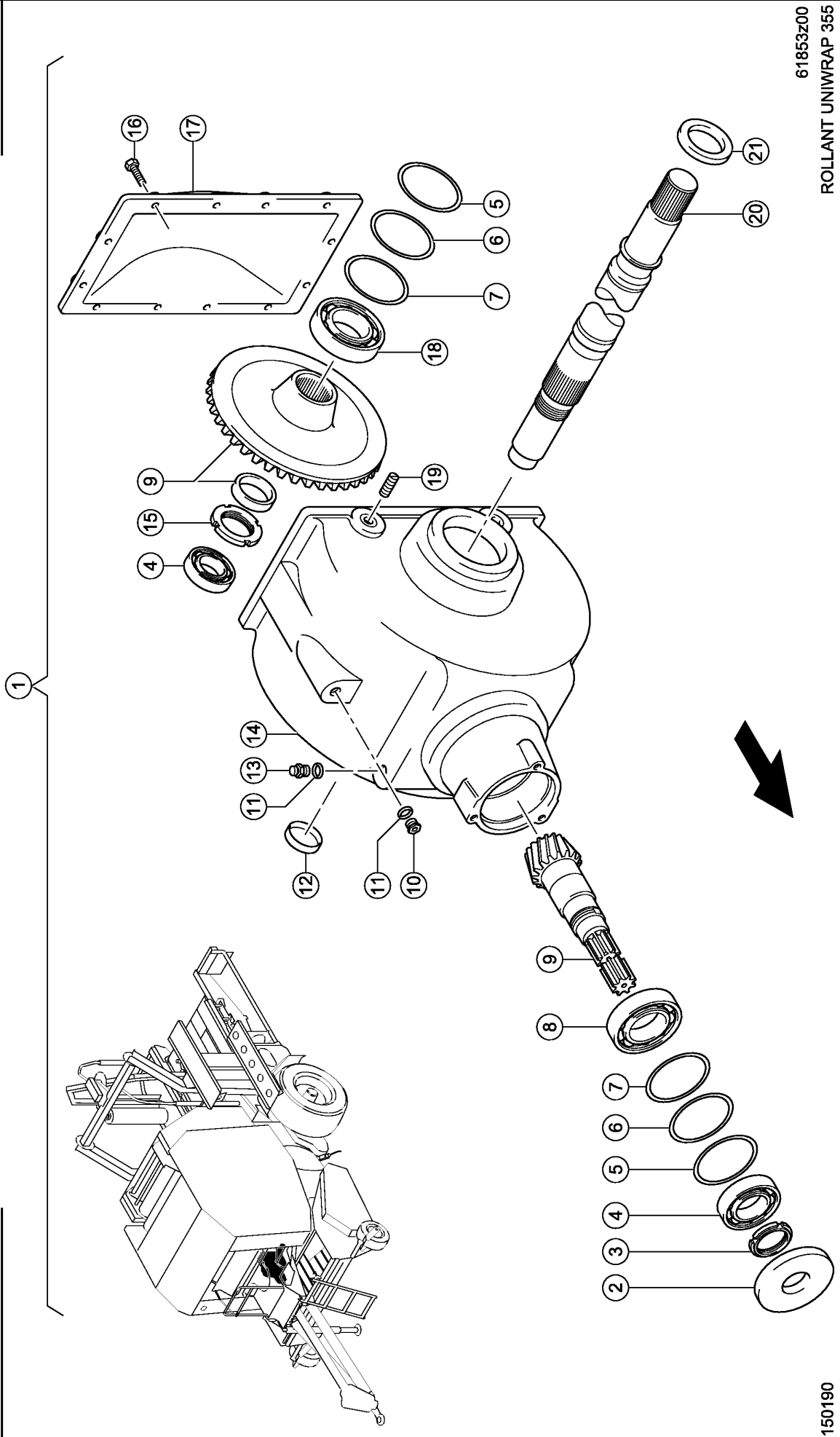
Pos.	Part No.	Description	Dimension	Quantity	Conditions
1	<b>00 0858 470 0</b>	GEARBOX	I=2,5	1	
2	<b>00 0213 766 0</b>	SHAFT SEAL	AS 40X 90X12	1	
3	<b>00 0823 994 0</b>	SLOTTED NUT	M45X1,5	1	
4	<b>00 0234 829 0</b>	TA.ROLLER BEARING	30209 J2/Q	2	
5	<b>00 0237 572 0</b>	HEXAGON HEAD BOLT	M12X35	8	
6	<b>00 0844 565 0</b>	BEARING HOUSING		1	
7	<b>00 0214 181 0</b>	SHIM	110X120X0,5 ERS.D. 21418	1	
7	<b>00 0214 180 0</b>	SHIM	110X120X0,3 ERS.D. 21418	1	
7	<b>00 0214 179 0</b>	SHIM	110X120X0,1 ERS.D. 21417	1	
8	<b>00 0845 324 0</b>	RING		1	
9	<b>00 0234 829 0</b>	TA.ROLLER BEARING	30209 J2/Q	1	
10	<b>00 0845 322 0</b>	BEVEL GEAR SET	I=2,5	1	
11	<b>00 0213 767 0</b>	LOCKING COVER	55X10	2	
12	<b>00 0940 866 0</b>	BREATHER VALVE	M 16X1,5 M. SPRITZROHR	1	
13	<b>00 0238 183 0</b>	SEALING RING	A16 X20	4	
14	<b>00 0844 564 0</b>	HOUSING		1	
15	<b>00 0940 866 0</b>	BREATHER VALVE	M 16X1,5 M. SPRITZROHR	1	
15	<b>00 0244 014 1</b>	STUD BOLT	M12X 45	2	
16	<b>00 0238 183 0</b>	SEALING RING	A16 X20	4	
16	<b>00 0244 351 0</b>	SCREW PLUG	M16X1,5	3	
17	<b>00 0823 993 0</b>	SLOTTED NUT	M55X1,5	1	
18	<b>00 0845 322 0</b>	BEVEL GEAR SET	I=2,5	1	
19	<b>00 0212 210 0</b>	TA.ROLLER BEARING	330 12	1	
20	<b>00 0213 765 0</b>	SHIM	85X 95X0,5	1	
20	<b>00 0213 764 0</b>	SHIM	85X 95X0,3	1	
20	<b>00 0213 962 0</b>	SHIM	85X 95X0,1	2	
21	<b>00 0211 034 0</b>	ROTARY SHAFT SEAL	AS 60X 85X 8	1	
22	<b>00 0851 337 0</b>	SHAFT		1	

**1) Remarks**P 08 / 10 Walterscheid  
auf Ausführung achten

**CLAAS**

**8B**

**WALTERSCHEID**



61853z00  
ROLLANT UNIWRAP 355

150190

Thank you so much for reading.  
Please click the “Buy Now!”  
button below to download the  
complete manual.



After you pay.

You can download the most  
perfect and complete manual in  
the world immediately.

Our support email:

[ebooklibonline@outlook.com](mailto:ebooklibonline@outlook.com)