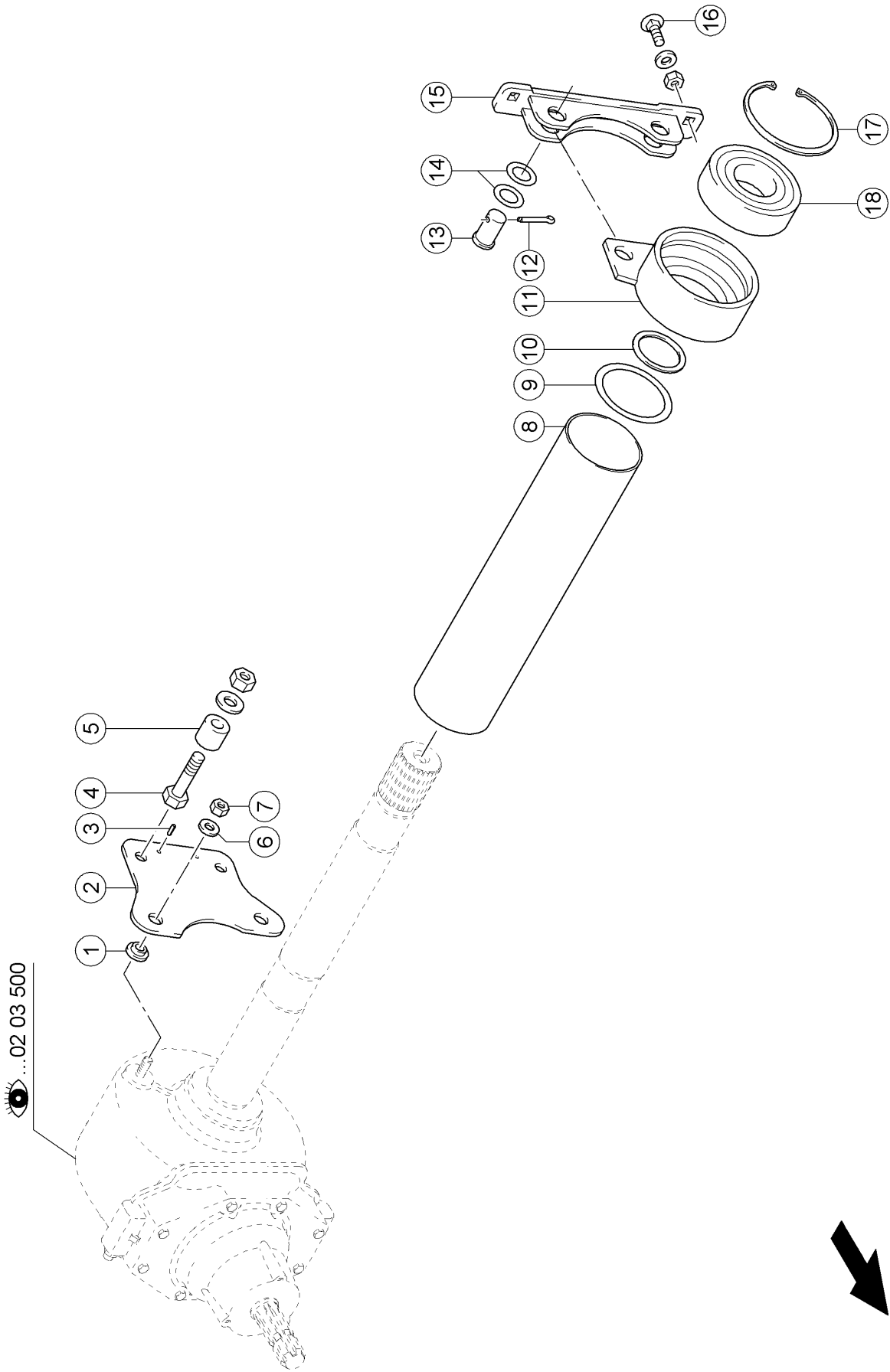


500 MAIN GEARBOX

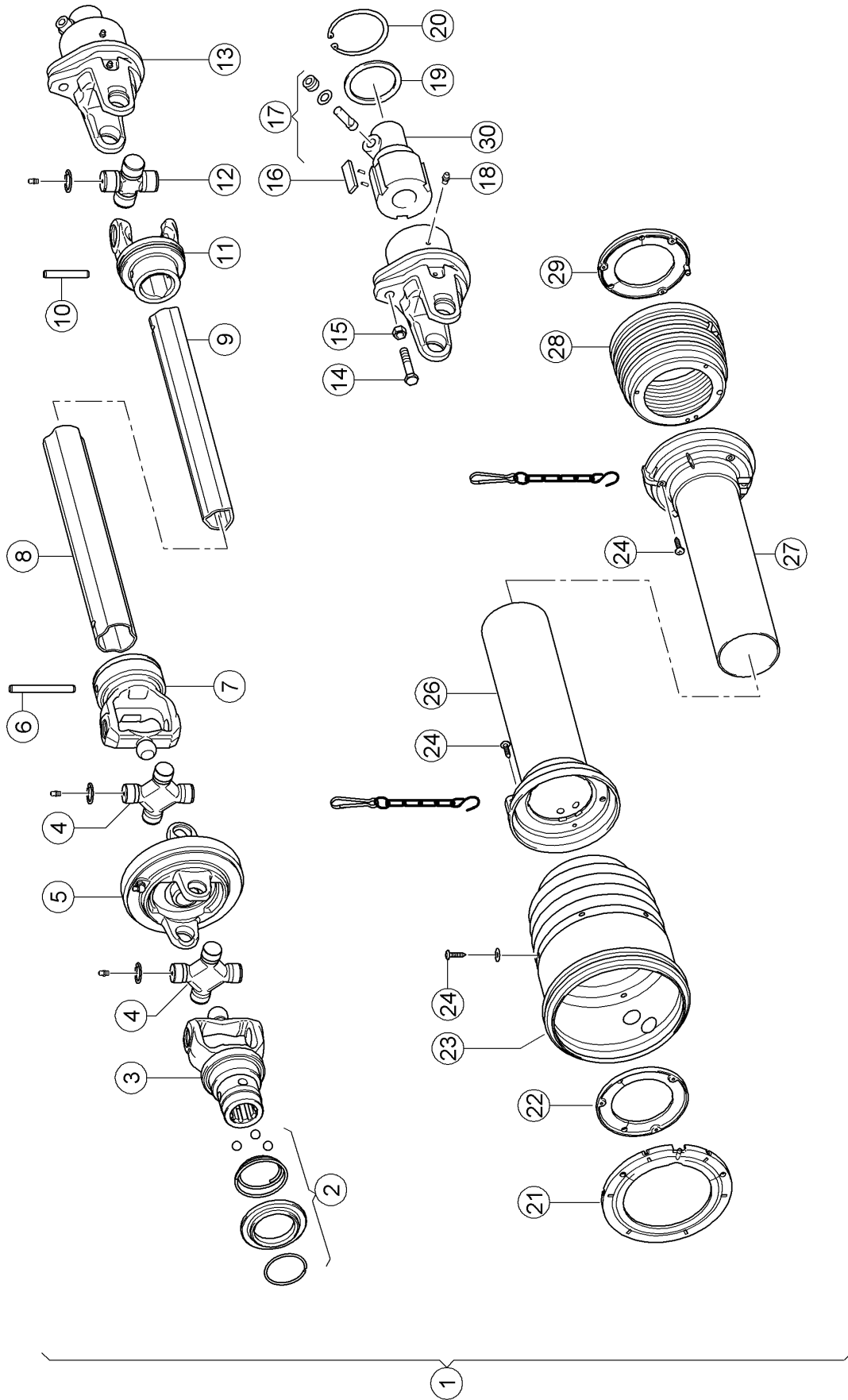
Pos.	Part No.	Description	Dimension	Quantity	Conditions
1	00 0822 996 0	PROTECT.TUBE CPL.		1	
2	00 0822 998 1	LOCK		2	
3	00 0237 950 1	BLIND RIVET	4,8X12	4	
4	00 0237 439 0	HEXAGON HEAD BOLT	M8X16	3	
5	00 0239 387 0	CONTACT WASHER	A8-8,2X18X1,4	3	
6	00 0843 463 0	GUARD CUP	D206X1.5	1	
7	00 0234 320 0	WASHER	8,4X23X3	3	
8	00 1408 344 0	GEARBOX	i:1/2,89	1	

E0452 0230A700A 1



700 FASTENINGS / ATTACHMENT PARTS

Pos.	Part No.	Description	Dimension	Quantity	Conditions
1	00 0810 117 0	BUSHING	D30X20	2	
2	00 0866 989 0	SUPPORT	RLT	1	
3	00 0235 642 0	SPRING PIN	5 X 16	2	
4	00 0235 590 0	HEXAGON HEAD BOLT	M16X70	2	
4	00 0239 391 0	CONTACT WASHER	A16	2	
4	00 0238 047 0	LOCK NUT	M16	2	
5	00 0832 509 0	BUSHING	Ø35×Ø17×32	2	
6	00 0239 389 0	CONTACT WASHER	A12	2	
7	00 0236 172 0	HEXAGONAL NUT	M12	2	
8	00 0866 888 0	PROTECTIVE TUBE		1	
9	00 0233 517 0	SHIM	90X110X1	1	
10	00 0234 389 0	BACK-UP WASHER	S 60X 75	1	
11	00 0843 465 0	BEARING		1	
12	00 0237 033 0	SPLIT PIN	6,3X 40	2	
13	00 0836 261 0	PIN	D25X45	2	
14	00 0234 238 0	WASHER	26X42X1	4	
15	00 0866 889 0	SUPPORT		1	
16	00 0238 461 0	COACH BOLT	M12X35	2	
16	00 0239 389 0	CONTACT WASHER	A12	2	
16	00 0236 172 0	HEXAGONAL NUT	M12	2	
17	00 0243 065 0	CIRCLIP	130X4	1	
18	00 0215 768 0	GRVD.BALL BEARING	6312-2RS*	1	



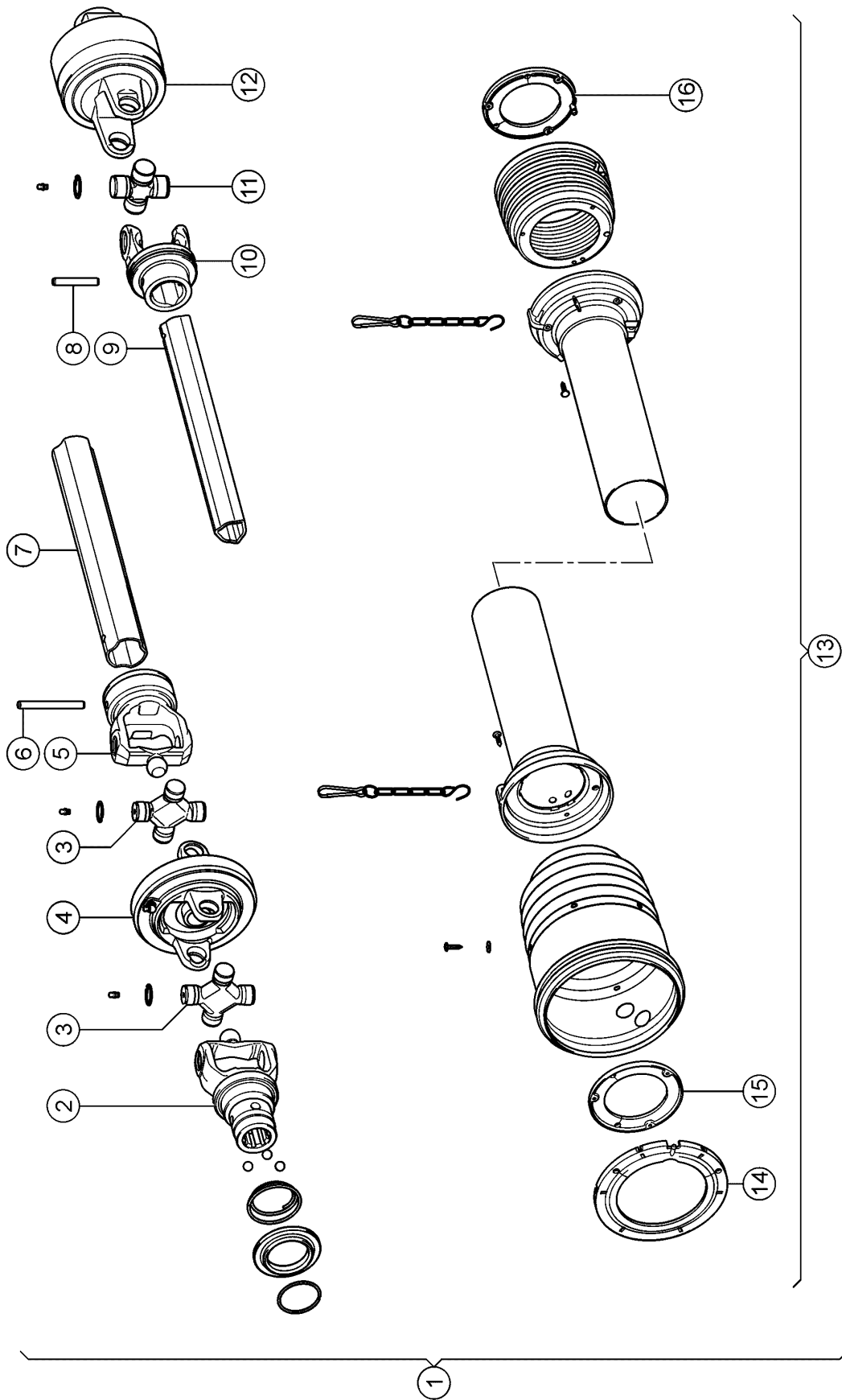
100 DRIVE SHAFT, MAIN DRIVE 1)

Pos.	Part No.	Description	Dimension	Quantity	Conditions
1	00 0866 313 0	DRIVE SHAFT ASSY.		1	
2	00 0139 525 0	DISCONNECT LOCK		2	
3	00 0843 764 0	FORK		1	
4	00 0139 080 0	CENTRE CROSS ASS.		2	
5	00 0843 767 0	FORK		1	
6	00 0233 750 0	SPRING PIN	10 X 95	1	
7	00 0866 339 0	INNER FORK		1	
8	00 0866 340 0	TUBE		1	
9	00 0866 341 0	TUBE		1	
10	00 0244 579 0	SPRING PIN	10X65	1	
11	00 0836 409 0	INNER FORK		1	
12	00 0138 065 0	CENTRE CROSS ASS.		1	
13	00 0866 344 0	CLUTCH		1	
14	00 0237 341 0	HEXAGON HEAD BOLT	M08X45	1	
15	00 0238 132 0	LOCK NUT	M8	1	
16	00 0836 395 0	PAWL		1	
17	00 0843 782 0	CLAMPING SCREW		1	
18	00 0236 942 0	GREASE NIPPLE	A S6X1	2	
19	00 0138 080 0	SHUTTER RING		1	
20	00 0211 245 0	CIRCLIP	82X2,5	1	
21	00 0844 557 0	RING		1	
22	00 0138 198 0	RING		1	
23	00 0150 165 0	PROTECT.FUNNEL		1	
24	00 0214 631 0	FILL.HEAD SCREW	ST4,8X22-C-H	12	
26	00 0866 342 0	PROTECTIVE TUBE		1	
27	00 0866 343 0	PROTECTIVE TUBE		1	
28	00 0138 197 0	PROTECT.FUNNEL		1	
29	00 0836 346 0	RING		1	
30	00 0836 394 0	HUB		1	

1) Equipment

PR_M04_0010

Single wide-angle PTO drive shaft with shearbolt, 6 splines



E0452 0260A100B 1

100 DRIVE SHAFT, MAIN DRIVE 1)

Pos.	Part No.	Description	Dimension	Quantity	Conditions
1	00 0843 758 0	DRIVE SHAFT ASSY.		1	
2	00 0843 764 0	FORK		1	
3	00 0139 080 0	CENTRE CROSS ASS.		2	
4	00 0843 767 0	FORK		1	
5	00 0843 766 0	INNER FORK		1	
6	00 0234 862 0	SPRING PIN	10 X100	1	
7	00 0843 768 0	TUBE		1	
8	00 0244 579 0	SPRING PIN	10X65	1	
9	00 0843 773 0	TUBE		1	
10	00 0843 772 0	FORK		1	
11	00 0138 065 0	CENTRE CROSS ASS.		1	
12	00 0843 797 0	CLUTCH		1	
13	00 0866 429 0	GUARD		1	
14	00 0844 557 0	RING		1	
15	00 0138 198 0	RING		1	
16	00 0836 346 0	RING		1	

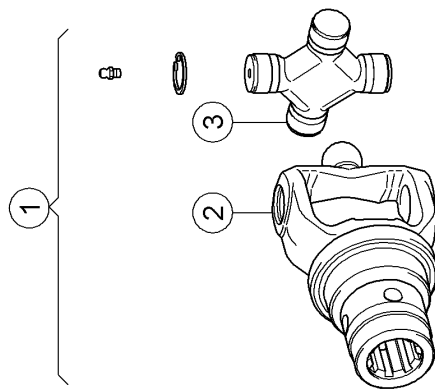
1) Equipment

PR_M04_0060

Single wide-angle PTO drive shaft with cam clutch

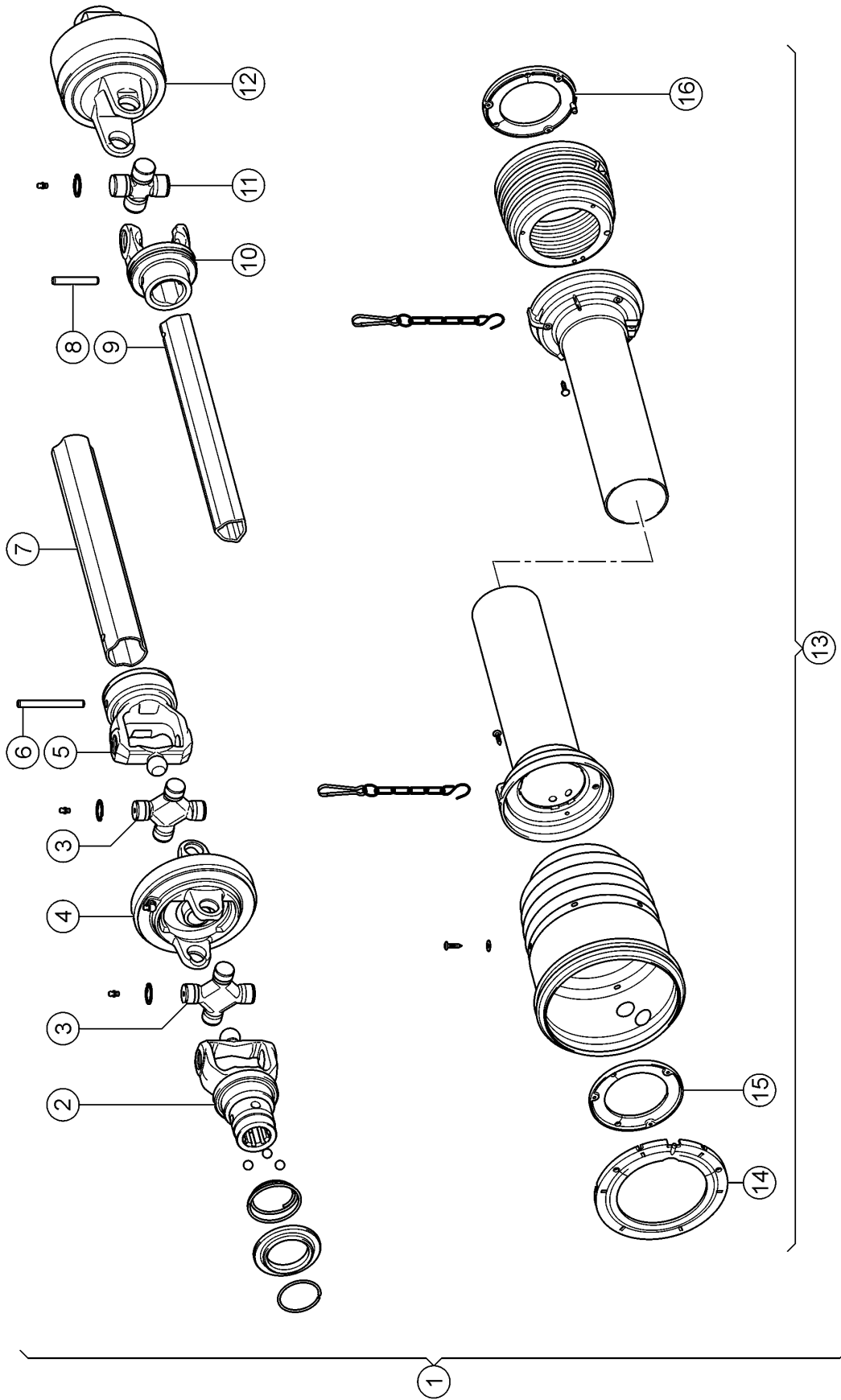
PR_M04_0380

Single wide-angle PTO drive shaft with cam clutch, 6 splines



100 DRIVE SHAFT, MAIN DRIVE 1)

Pos.	Part No.	Description	Dimension	Quantity	Conditions
1	00 0866 167 0	KIT	BYPY	1	
2	00 0843 775 0	FORK		1	
3	00 0139 080 0	CENTRE CROSS ASS.		1	
1)	Equipment	PR_M03_0010	Yoke, 8 splines		



E0452 0260A100D 1

100 DRIVE SHAFT, MAIN DRIVE 1)

Pos.	Part No.	Description	Dimension	Quantity	Conditions
1	00 0843 759 0	DRIVE SHAFT ASSY.		1	2)
2	00 0843 755 0	DRIVE SHAFT ASSY.		1	2)
3	00 0139 080 0	CENTRE CROSS ASS.		2	
4	00 0843 767 0	FORK		1	
5	00 0843 766 0	INNER FORK		1	
6	00 0234 862 0	SPRING PIN	10 X100	1	
7	00 0843 768 0	TUBE		1	
8	00 0244 579 0	SPRING PIN	10X65	1	
9	00 0843 773 0	TUBE		1	
10	00 0843 772 0	FORK		1	
11	00 0138 065 0	CENTRE CROSS ASS.		1	
12	00 0843 797 0	CLUTCH		1	
13	00 0866 429 0	GUARD		1	
14	00 0844 557 0	RING		1	
15	00 0138 198 0	RING		1	
16	00 0836 346 0	RING		1	

1) Equipment

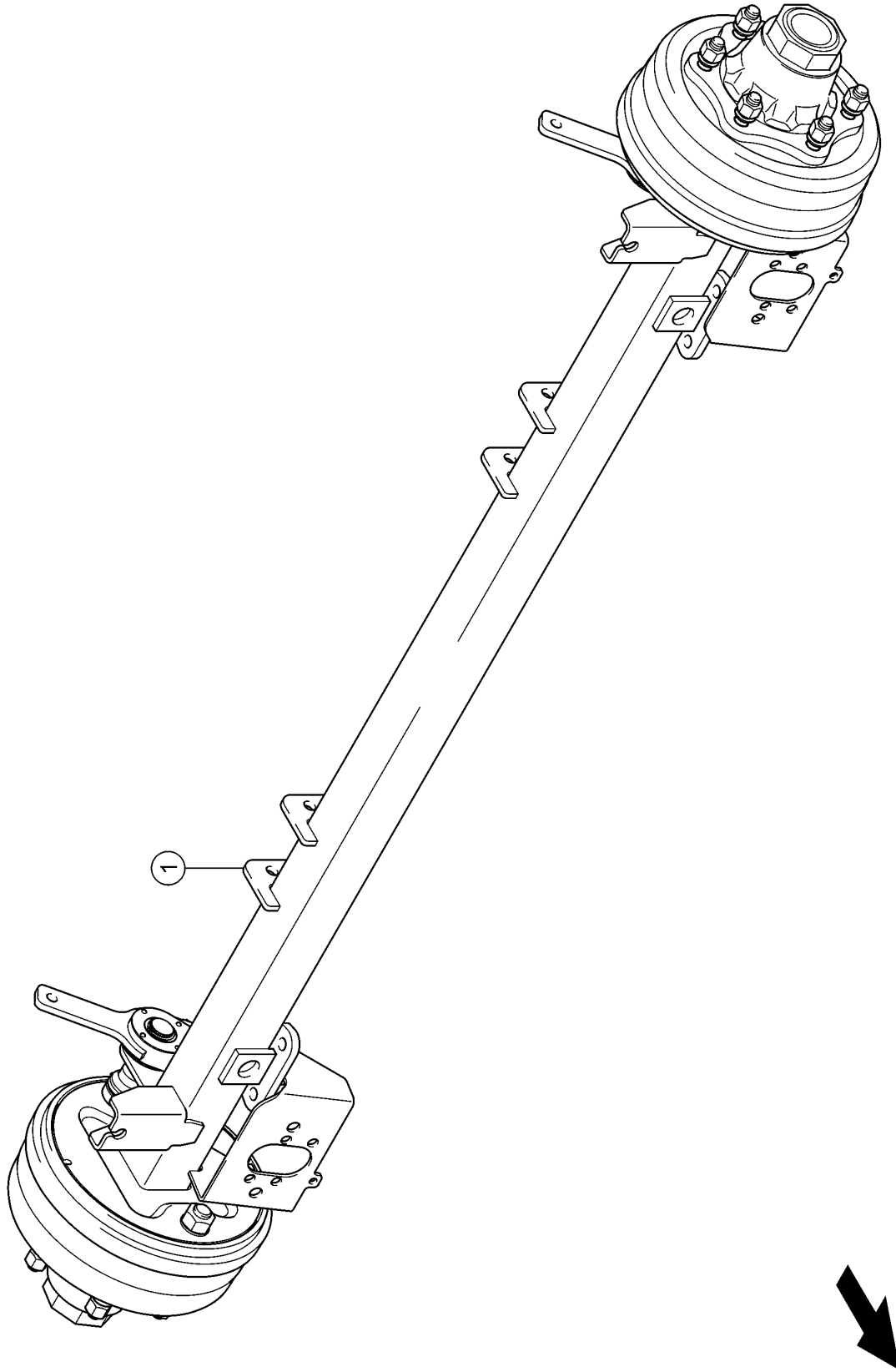
PR_M04_0070

Single wide-angle PTO drive shaft with cam clutch

2) Remarks

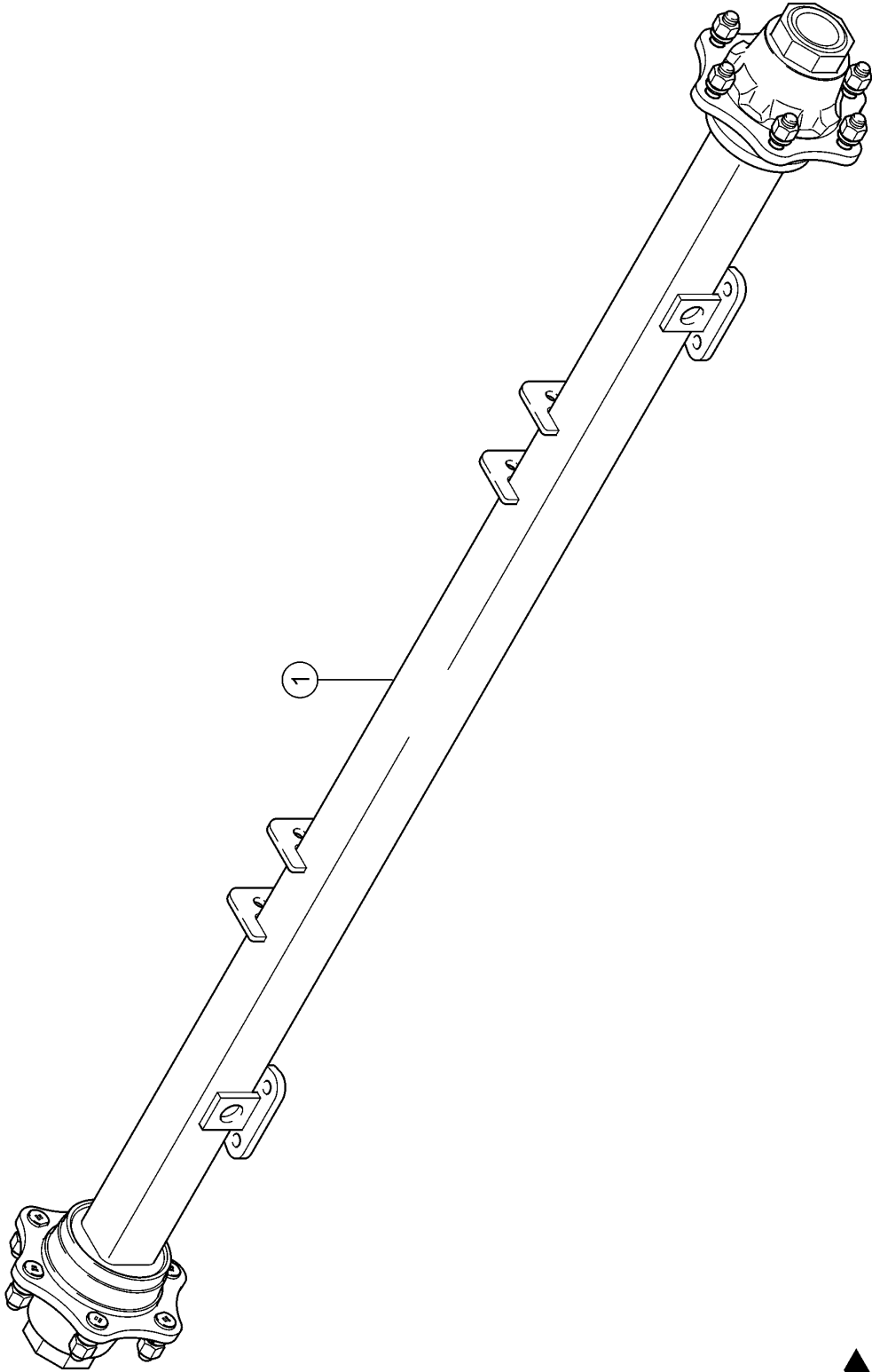
8 cannelures

E0452 0310A010A 1



010 AXLE COMPLETE 1)

Pos.	Part No.	Description	Dimension	Quantity	Conditions
1	00 1408 930 1	BRAKE AXLE	6 TROUS VOIE 2120	1	
1)	Equipment				
		PR_N12_0010			Hydraulic brakes
		PR_N12_0020			Dual-circuit compressed air brake system, up to 40/50 km/h
		PR_N12_0110			Hydraulic active brakes
		PR_N12_0180			Hydraulic active brakes, France
		PR_N12_0270			Dual-circuit compressed air brake system, 25 km/h



Thank you so much for reading.
Please click the “Buy Now!”
button below to download the
complete manual.



After you pay.

You can download the most
perfect and complete manual in
the world immediately.

Our support email:

ebooklibonline@outlook.com