



Service Repair Manual

Models

336F, 336F L and 336F LN
Excavator

Product: EXCAVATOR

Model: 336F EXCAVATOR KCS

Configuration: 336F L & 336F LN Excavators KCS00001-UP (MACHINE) POWERED BY C9.3 Engine

Disassembly and Assembly C9.3 Engines for Caterpillar Built Machines

Media Number -UENR0130-06

Publication Date -01/08/2015

Date Updated -22/05/2017

i07350680

Combustion Head - Remove and Install - Clean Emissions Module

SMCS - 108B-010

Removal Procedure

Table 1

Required Tools			
Tool	Part Number	Part Description	Qty
A	-	Loctite C5A Copper Anti-Seize	-
B	195-4609	Seal Pick	1
C	-	Isopropyl Alcohol	-
D	5P-4996	Plug	2



WARNING

Fuel leaked or spilled onto hot surfaces or electrical components can cause a fire. To help prevent possible injury, turn the start switch off when changing fuel filters or water separator elements. Clean up fuel spills immediately.

NOTICE

Keep all parts clean from contaminants.

Contaminants may cause rapid wear and shortened component life.



Hot engine components can cause injury from burns. Before performing maintenance on the engine, allow the engine and the components to cool.

1. Turn the fuel supply to the OFF position and turn the power disconnect switch to the OFF.

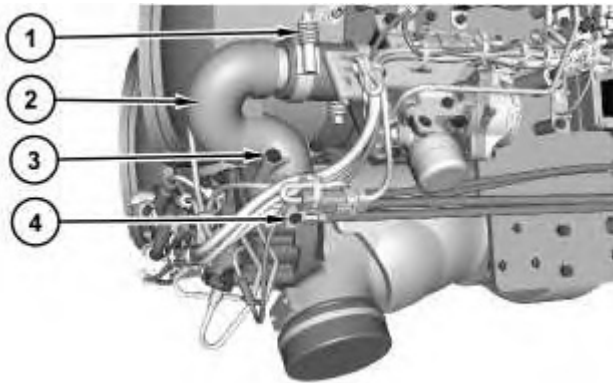
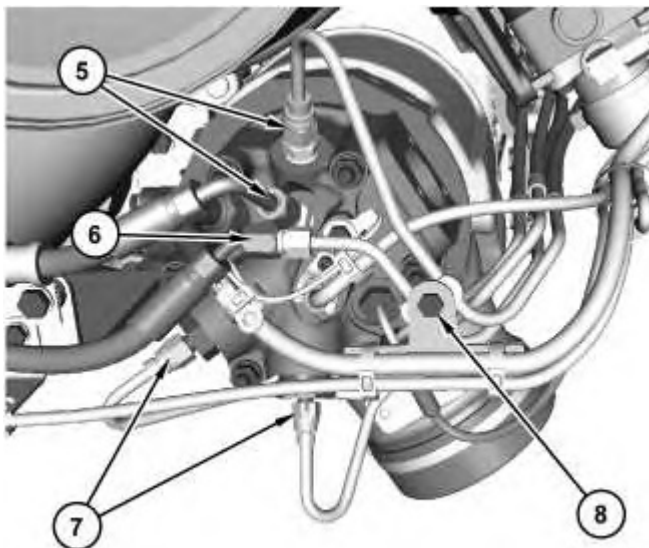


Illustration 1

g03346521

2. Disconnect clamp assembly (1).
3. Remove three bolts (3).
4. Remove bolt (4). Remove tube assembly (2) and the gasket.



Note: Cap all tube assemblies and fittings that are disconnected to prevent fluid loss. This action will also keep contaminants out of the systems.

5. Disconnect tube assemblies (5), (6), and (7). Plug tube assemblies (7) with Tooling (D). Remove bolt (8).

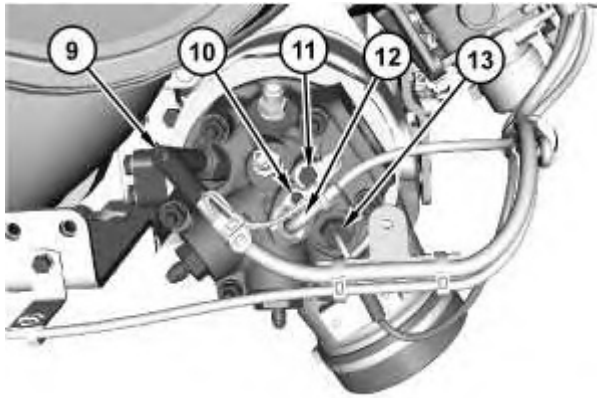


Illustration 3

6. Disconnect ignition wire assembly (9) and cable assembly (11).
7. Remove allen bolt (10), the clamp assembly, and position wire assembly (12) out of the way.
8. Disconnect flame detection temperature sensor (13).

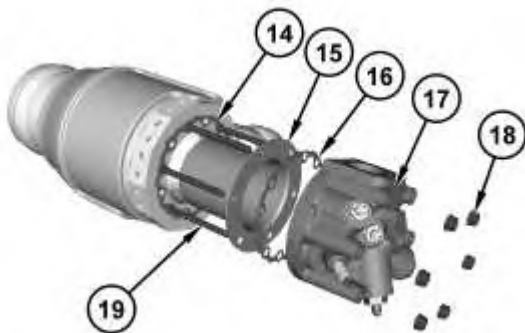


Illustration 4

9. Remove nuts (18) and remove combustion head (17).
10. Remove gasket (16), tube assembly (15), and gasket (14).

Note: The gaskets are for one time use only. Replace with new gaskets upon installation.

11. If required, remove studs (19).

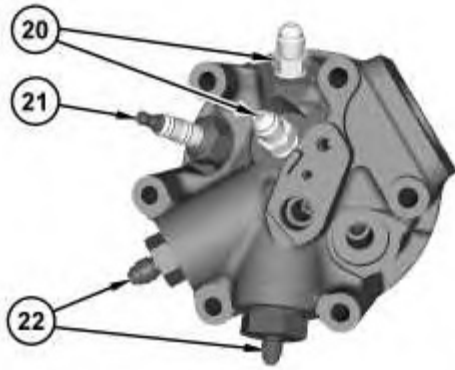


Illustration 5

g03346567

12. Remove fittings (20) and (22).
13. Remove spark plug (21).

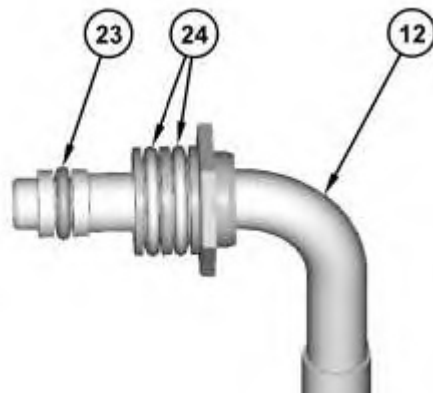


Illustration 6

g03346591

14. Use Tooling (B) to remove O-ring seals (23) and (24) from cable assembly (12). Discard the O-ring seals.

Installation Procedure

1. Install combustion head (17) in the reverse order of removal.
 - a. Apply Tooling (A) onto the threads of studs (19). Install the studs. Tighten studs (19) to a torque of $17 \pm 2 \text{ N}\cdot\text{m}$ ($150 \pm 18 \text{ lb in}$).
 - b. Apply Tooling (A) onto the threads of the studs and nuts (18). Tighten nuts (18) in a crisscross pattern to a torque of $23 \pm 3 \text{ N}\cdot\text{m}$ ($204 \pm 27 \text{ lb in}$). Tighten nuts (18) again in a crisscross pattern to a torque of $28 \pm 3 \text{ N}\cdot\text{m}$ ($248 \pm 27 \text{ lb in}$). Tighten nuts (18) again in a crisscross pattern to a torque of $28 \pm 3 \text{ N}\cdot\text{m}$ ($248 \pm 27 \text{ lb in}$).



Thank you so much for reading.
Please click the “Buy Now!”
button below to download the
complete manual.



After you pay.

You can download the most
perfect and complete manual in
the world immediately.

Our support email:

ebooklibonline@outlook.com