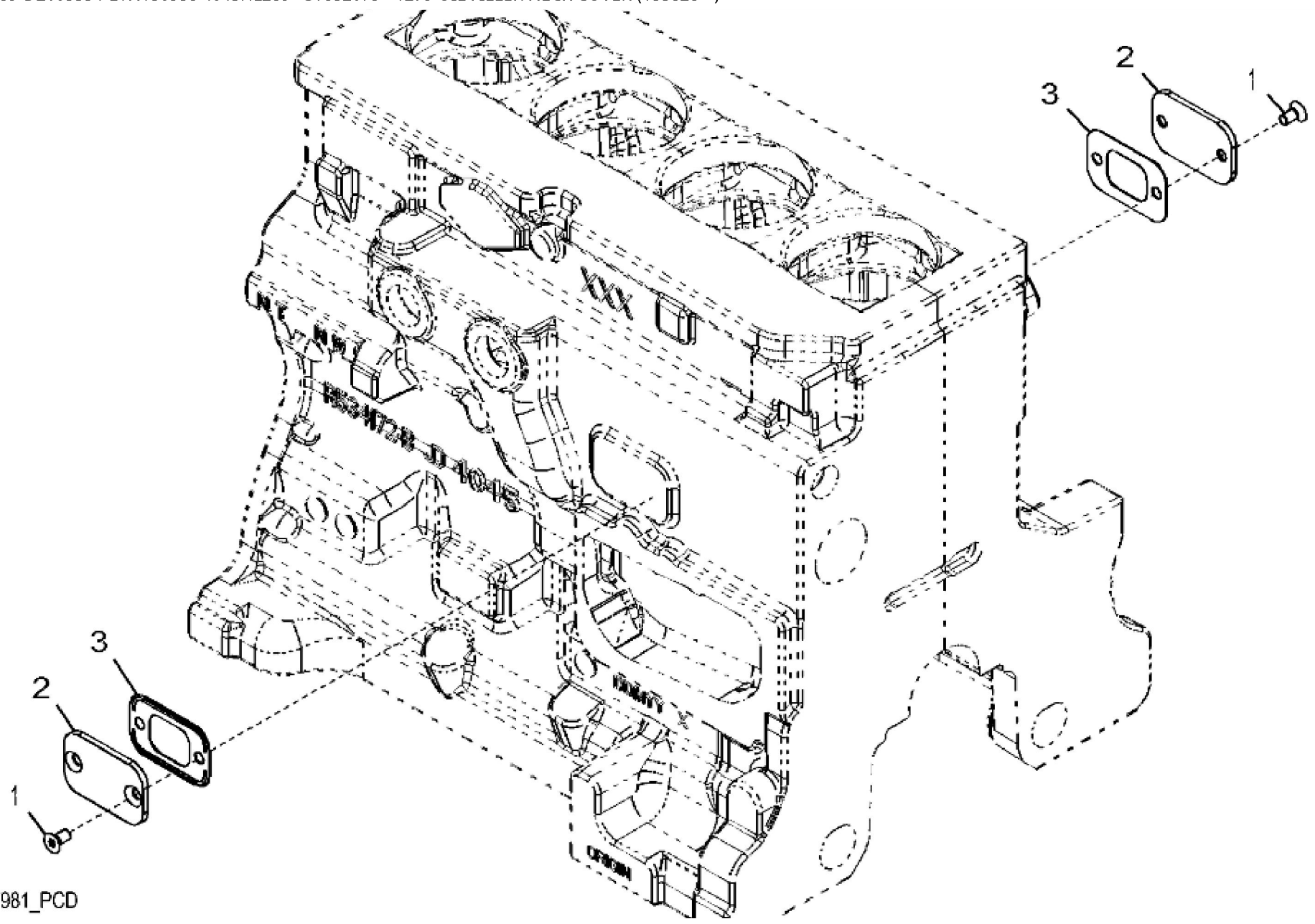


John Deere > Turf And Utility >TRACTOR >6125M - TRACTOR >6125M Tractor (Europe Edition, Engine SN: 4045GXXXXXX)(Tier 2)(S.N. 859738-) >EN ENGINE 4045HL289-DZ105554-ETN150958 >EN00
 ENGINE 4045HL289-DZ105554-ETN150958 4045HL289 >ST349518 - 1160 ROCKER ARM COVER

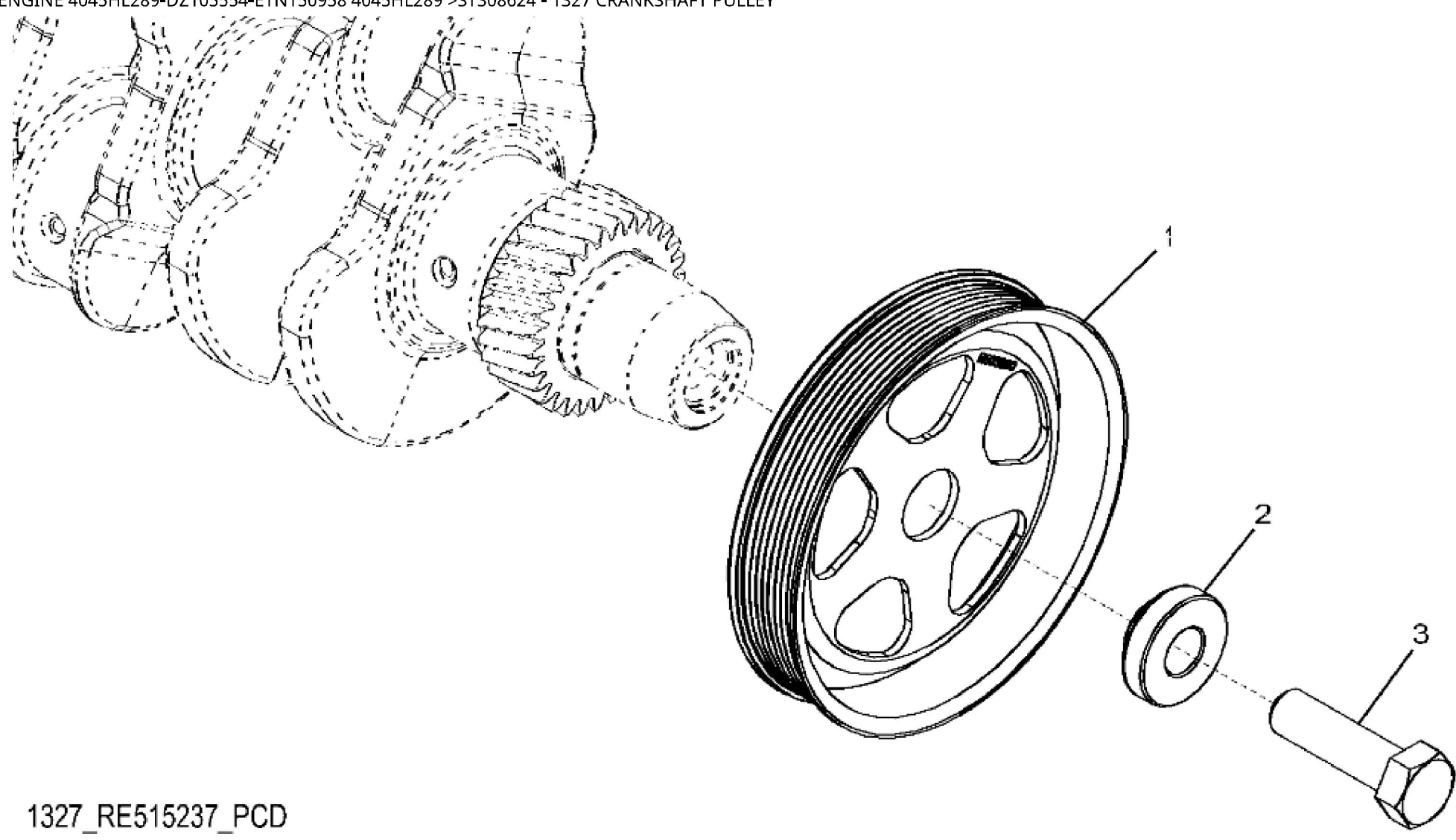
KEY	PART NO.	PART NAME	QTY	REMARKS
1	RE527858	SCREW	2	
2	R522409	HEAT SHIELD	1	
3	H23125	PLUG	4	
4	R123574	NUT	4	
5	R123575	O-RING	4	
6	R520896	VALVE COVER	1	(Not Illustrated) ORDER R543879
6	R543879	VALVE COVER	1	MARKED R543880
7	R524468	GASKET	1	
8	RE528742	DEFLECTOR	1	
9	19M7862	SCREW	1	M6 X 20



1279_ETN137981_PCD

John Deere > Turf And Utility > TRACTOR > 6125M - TRACTOR > 6125M Tractor (Europe Edition, Engine SN: 4045GXXXXXX)(Tier 2)(S.N. 859738-) > EN ENGINE 4045HL289-DZ105554-ETN150958 > EN00
ENGINE 4045HL289-DZ105554-ETN150958 4045HL289 > ST852079 - 1279 OIL FILLER NECK COVER (155828 -)

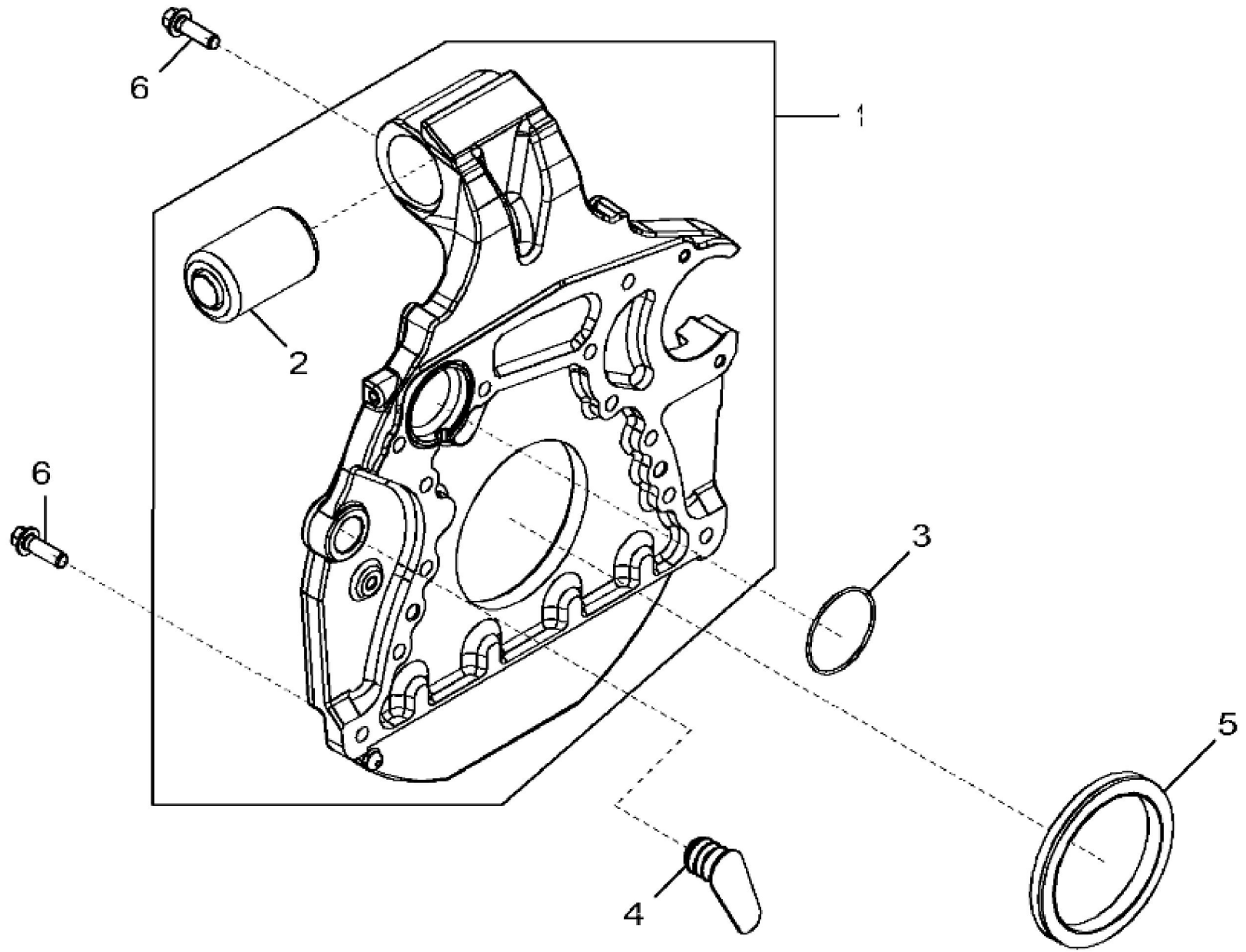
KEY	PART NO.	PART NAME	QTY	REMARKS	
1	RE70306	SCREW	4		
2	R135262	COVER	2		
3	R136495	GASKET	2		



1327_RE515237_PCD

John Deere > Turf And Utility > TRACTOR > 6125M - TRACTOR > 6125M Tractor (Europe Edition, Engine SN: 4045GXXXXXX)(Tier 2)(S.N. 859738-) > EN ENGINE 4045HL289-DZ105554-ETN150958 > EN00
ENGINE 4045HL289-DZ105554-ETN150958 4045HL289 > ST308624 - 1327 CRANKSHAFT PULLEY

KEY	PART NO.	PART NAME	QTY	REMARKS	
1	R503880	PULLEY	1	OD = 188 mm	
2	R515040	BUSHING	1	OD = 50 mm	
3	R516648	CAP SCREW	1	M20 X 70	



Thank you so much for reading.
Please click the “Buy Now!”
button below to download the
complete manual.



After you pay.

You can download the most
perfect and complete manual in
the world immediately.

Our support email:

ebooklibonline@outlook.com