

6150.4 Agrottron -> WSXAN50200LD50010

Section: H0 - HYDRAULIC AND PNEUMATIC SYSTEM|

Ref: H0.01.19 (1)

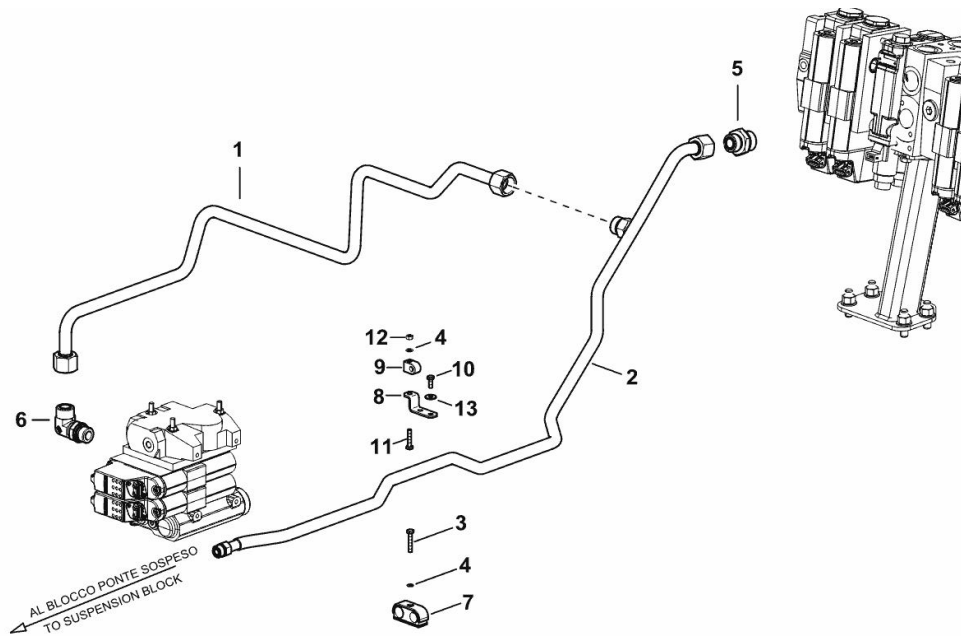
**DELIVERY PIPE OPEN CENTER**

Fig.	P/n	QTY	Name
------	-----	-----	------

**Notes:**

- FOR TYPES WITH SUSPENDED AXLE AND FRONT LIFT [6150.4 Agrottron -> WSXAN50200LD50010]

1	0.019.0885.3/10	1	tube
2	0.019.0984.3	1	tube
3	2.0112.013.2	1	screw m 6 p.1 x 35
4	2.1475.001.7	2	washer 6.4x12
5	2.3272.120.0	1	pipe fitting
6	2.3273.009.0	1	pipe fitting
7	2.3320.219.0	1	terminal
8	0.020.1487.0	1	bracket
9	01141549	1	terminal d=8
10	2.0112.005.2	2	screw m 6 p.1 x 16
11	2.0112.011.2	1	screw m 6 p.1x30
12	2.1011.103.2	1	nut m 6 p.1
13	2.1312.003.2	2	washer 6



K9\_U1182\_48\_0-A-001

6150.4 Agrottron -> WSXAN50200LD50010

Section: H0 - HYDRAULIC AND PNEUMATIC SYSTEM|

Ref: H0.01.20 (1)

**DELIVERY PIPE OPEN CENTER**

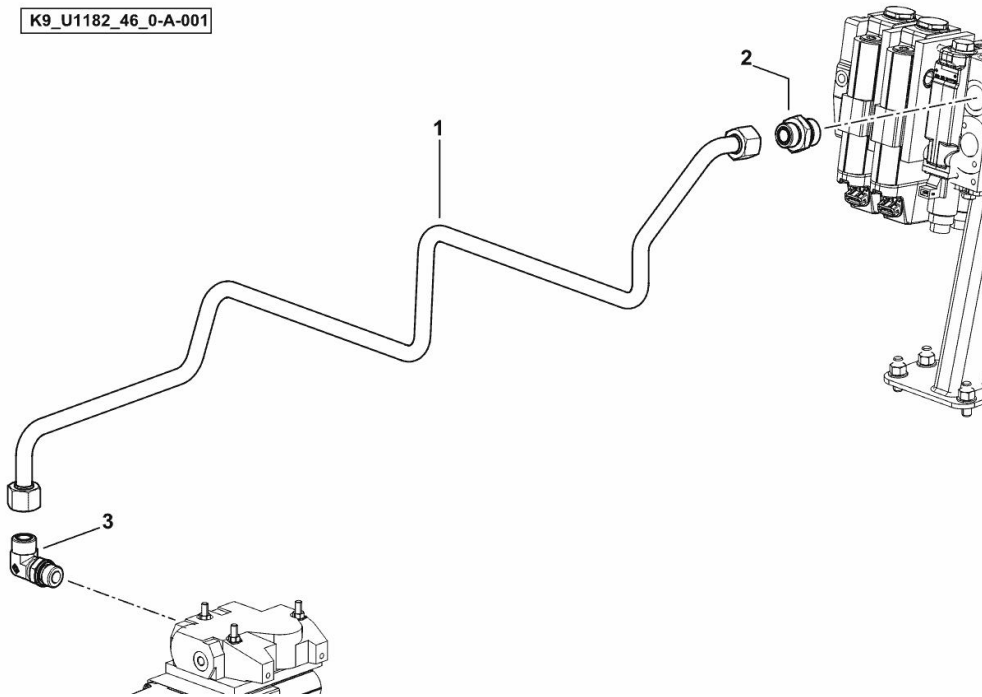
Fig.	P/n	QTY	Name
------	-----	-----	------

**Notes:**

- FOR TYPES WITHOUT SUSPENDED AXLE AND FRONT LIFT [6150.4 Agrottron -> WSXAN50200LD50010]

1	0.018.9245.3/10	1	tube
2	2.3272.120.0	1	pipe fitting
3	2.3273.009.0	1	pipe fitting

K9\_U1182\_46\_0-A-001



6150.4 Agrottron -> WSXAN50200LD50010

Section: H0 - HYDRAULIC AND PNEUMATIC SYSTEM|

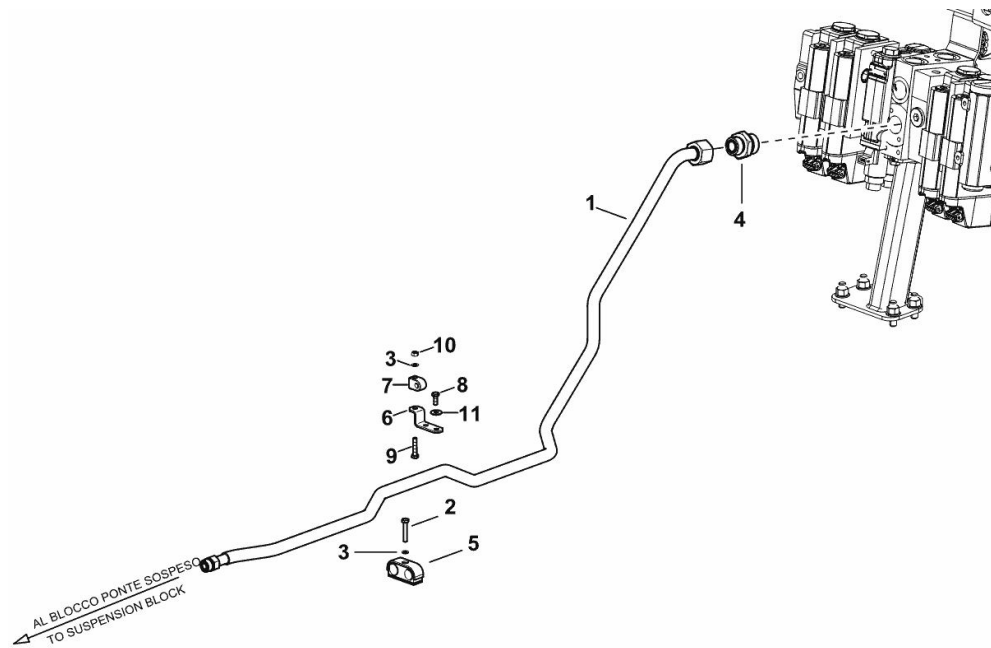
Ref: H0.01.21 (1)

**DELIVERY PIPE OPEN CENTER**

Fig.	P/n	QTY	Name
------	-----	-----	------

**Notes:**

- FOR TYPES WITH SPENDED AXLE AND WITHOUT FRONT LIFT [6150.4 Agrottron -> WSXAN50200LD50010]



K9\_U1182\_47\_0-A-001

1	0.018.9208.3	1	tube
2	2.0112.013.2	1	screw m 6 p.1 x 35
3	2.1475.001.7	2	washer 6.4x12
4	2.3272.120.0	1	pipe fitting
5	2.3320.220.0	1	terminal Ø 18/20 - typ A
6	0.020.1487.0	1	bracket
7	01141549	1	terminal d=8
8	2.0112.005.2	2	screw m 6 p.1 x 16
9	2.0112.011.2	1	screw m 6 p.1x30
10	2.1011.103.2	1	nut m 6 p.1
11	2.1312.003.2	2	washer 6

6150.4 Agrottron -> WSXAN50200LD50010

Section: H0 - HYDRAULIC AND PNEUMATIC SYSTEM|

Ref: H0.01.22 (1)

**DELIVERY PIPE LOAD SENSING**

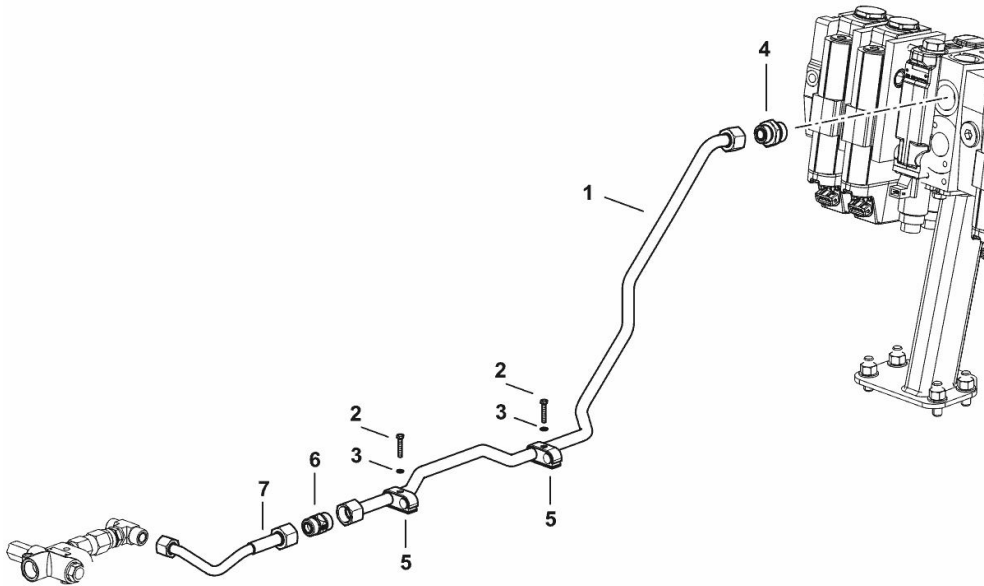
Fig.	P/n	QTY	Name
------	-----	-----	------

**Notes:**

- FOR TYPES WITHOUT SUSPENDED AXLE AND WITHOUT FRONT LIFT [6150.4 Agrottron -> WSXAN50200LD50010]

1	0.019.3895.3	1	tube
2	2.0112.013.2	2	screw m 6 p.1 x 35
3	2.1475.001.7	2	washer 6.4x12
4	2.3272.120.0	1	pipe fitting
5	2.3320.220.0	2	terminal Ø 18/20 - typ A
6	2.3729.034.0	1	valve
7	0.019.3872.3	1	tube

K9\_U1582\_45\_0-A-001



6150.4 Agrottron -> WSXAN50200LD50010

Section: H0 - HYDRAULIC AND PNEUMATIC SYSTEM|

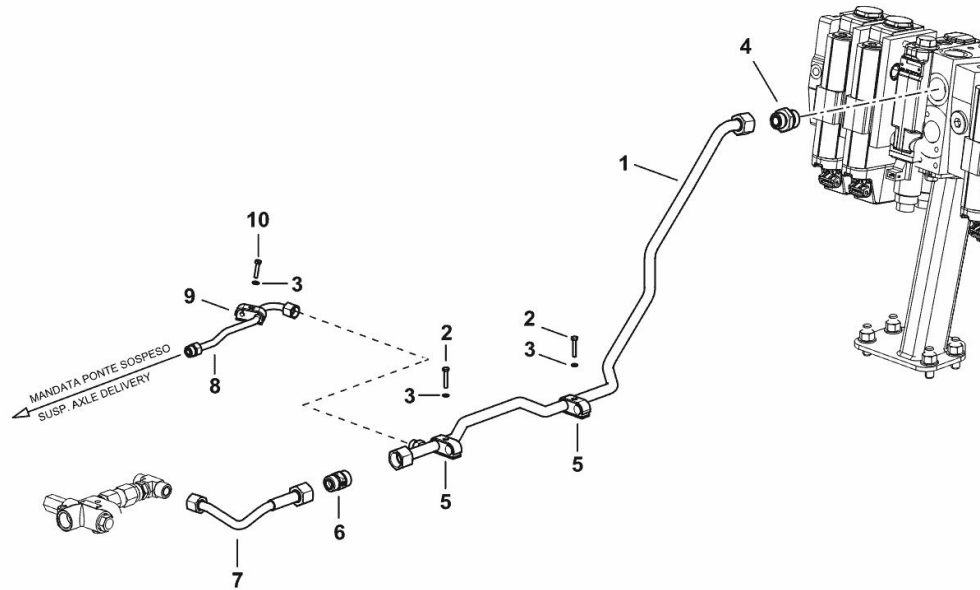
Ref: H0.01.23 (1)

**DELIVERY PIPE LOAD SENSING**

Fig.	P/n	QTY	Name
------	-----	-----	------

**Notes:**

- FOR TYPES WITH SPENDED AXLE AND WITHOUT FRONT LIFT [6150.4 Agrottron -> WSXAN50200LD50010]



K9\_U1582\_47\_0-A-001

1	0.019.3943.3	1	tube
2	2.0112.013.2	2	screw m 6 p.1 x 35
3	2.1470.002.2	3	lock washer 6
4	2.3272.120.0	1	pipe fitting
5	2.3320.220.0	2	terminal Ø 18/20 - typ A
6	2.3729.034.0	1	valve
7	0.019.3872.3	1	tube
8	0.019.3857.3	1	tube
9	2.3320.204.0	1	collar Ø 8/12
10	2.0112.011.2	1	screw m 6 p.1x30

6150.4 Agrottron -> WSXAN50200LD50010

Section: H0 - HYDRAULIC AND PNEUMATIC SYSTEM|

Ref: H0.01.24 (1)

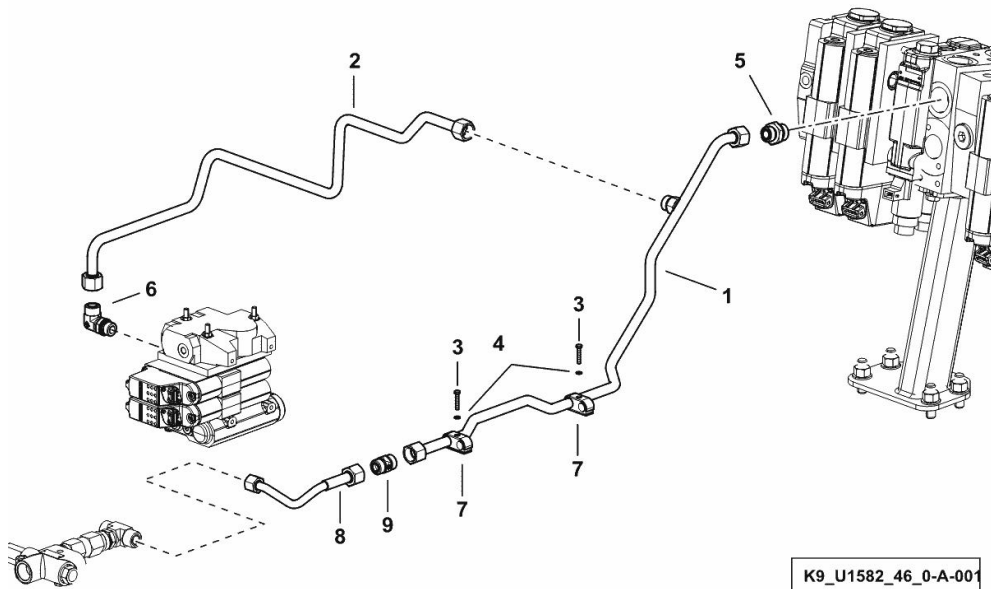
**DELIVERY PIPE LOAD SENSING**

Fig.	P/n	QTY	Name
------	-----	-----	------

**Notes:**

- FOR TYPES WITHOUT SUSPENDED AXLE AND FRONT LIFT [6150.4 Agrottron -> WSXAN50200LD50010]

1	0.019.3942.3	1	tube
2	0.019.0885.3/10	1	tube
3	2.0112.013.2	2	screw m 6 p.1 x 35
4	2.1470.002.2	2	lock washer 6
5	2.3272.120.0	1	pipe fitting
6	2.3273.009.0	1	pipe fitting
7	2.3320.220.0	2	terminal Ø 18/20 - typ A
8	0.019.3872.3	1	tube
9	2.3729.034.0	1	valve



6150.4 Agrottron -> WSXAN50200LD50010

Section: H0 - HYDRAULIC AND PNEUMATIC SYSTEM|

Ref: H0.01.25 (1)

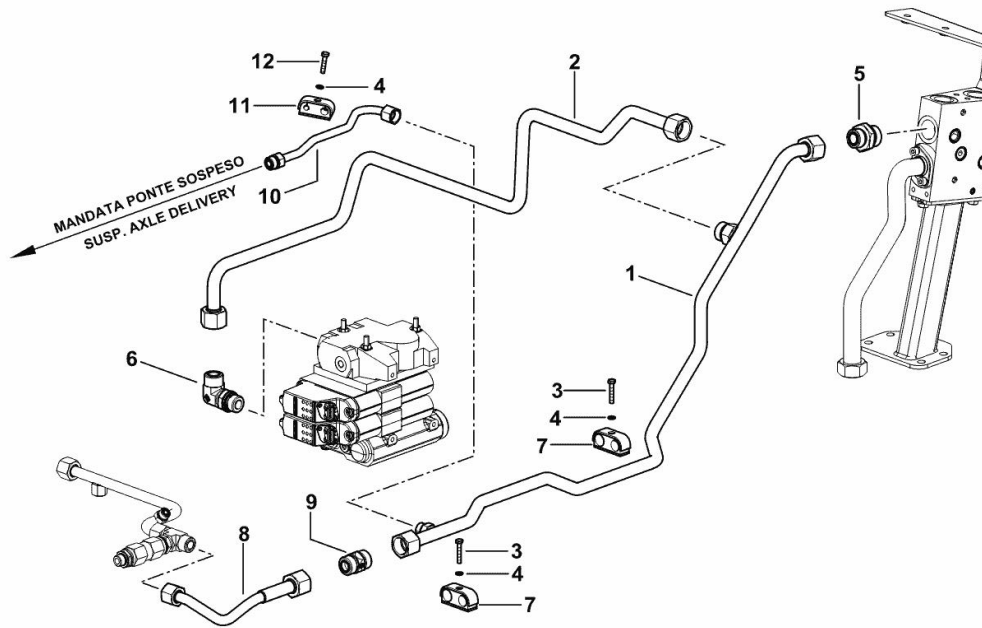
**DELIVERY PIPE LOAD SENSING**

Fig.	P/n	QTY	Name
------	-----	-----	------

**Notes:**

- FOR TYPES WITH SUSPENDED AXLE AND FRONT LIFT [6150.4 Agrottron -> WSXAN50200LD50010]

K9\_U1582\_48\_0-A-001



1	0.019.3896.3	1	tube
2	0.019.0885.3/10	1	tube
3	2.0112.013.2	2	screw m 6 p.1 x 35
4	2.1470.002.2	3	lock washer 6
5	2.3272.120.0	1	pipe fitting
6	2.3273.009.0	1	pipe fitting
7	2.3320.220.0	2	terminal Ø 18/20 - typ A
8	0.019.3872.3	1	tube
9	2.3729.034.0	1	valve
10	0.019.3857.3	1	tube
11	2.3320.204.0	1	collar Ø 8/12
12	2.0112.011.2	1	screw m 6 p.1x30

**Buy Now**



Our support email:

[ebooklibonline@outlook.com](mailto:ebooklibonline@outlook.com)