

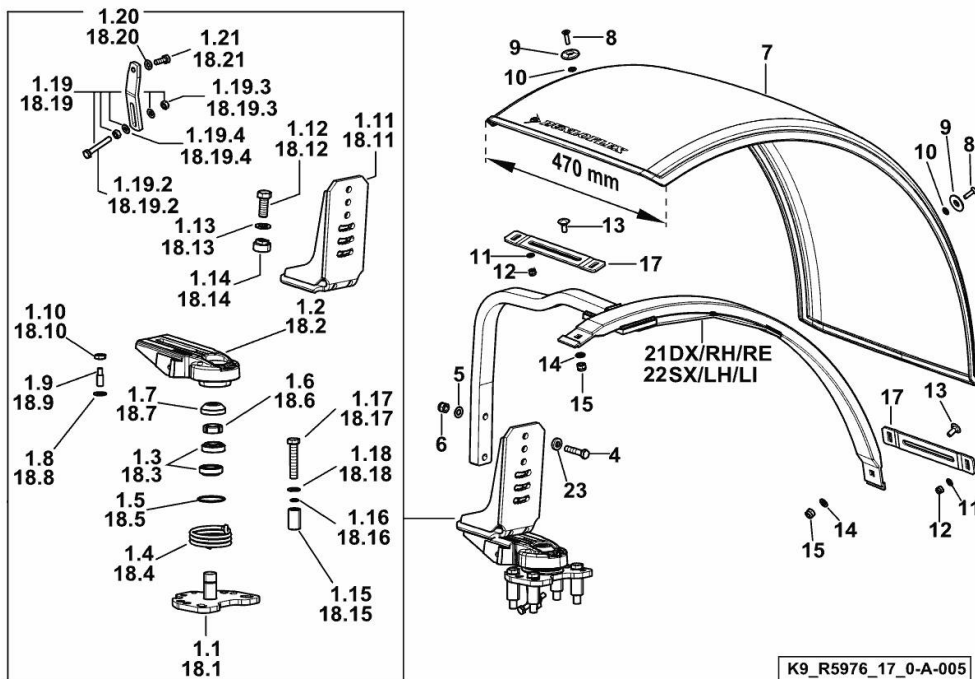
SELF-ADJUSTING FRONT FENDERS mm 470

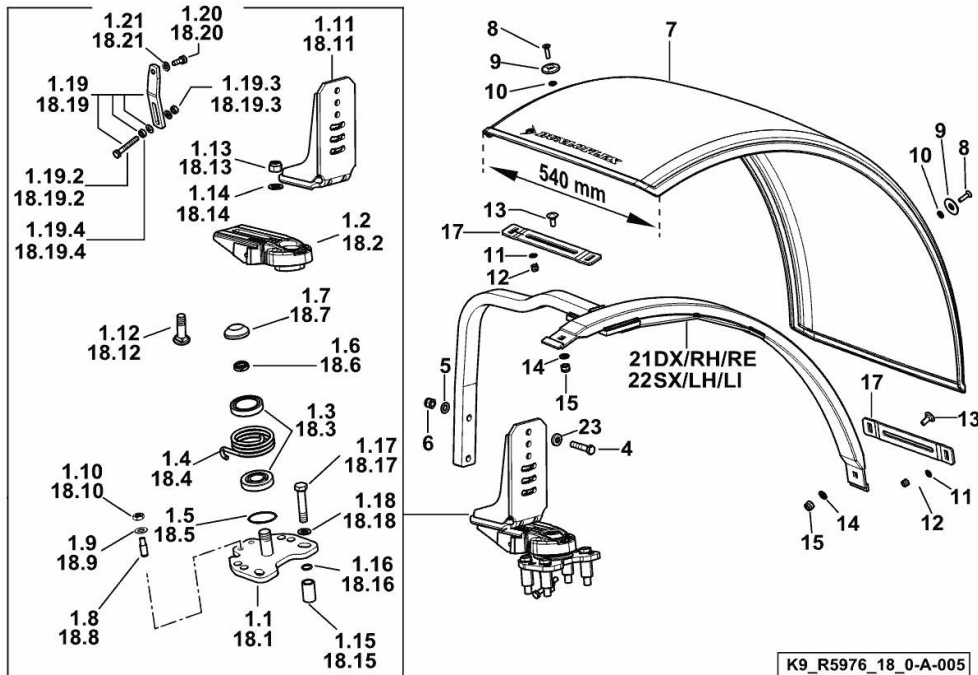
Fig.	P/n	QTY	Name
18.5	2.1530.125.0	1	oil seal 50.47x2.62
18.6	2.1219.073.2	1	ring nut
18.7	0.018.2881.0	1	cover
18.8	2.0599.113.2	1	grub screw m 14 p.1.5
18.9	2.1475.005.2	1	washer 14
18.10	2.1011.508.2	1	nut m 14 p.1.5
18.11	0.018.2880.2	1	support
18.12	2.0123.715.2	1	screw m 18 p.1.5x40
18.13	0.018.7705.0	1	bush m18x1,5
18.14	2.1310.011.2	1	flat washer 19x34
18.15	2.1549.697.2	4	spacer 19x27x45
18.16	2.1530.033.0	4	oil seal 13.10x2.62
18.17	2.0112.625.2	4	screw m 16 p.2x80
18.18	2.1310.010.2	4	flat washer 17x30
18.19	0.018.6859.3	1	stop
18.19.2	2.0114.321.2	1	screw m 10 p.1.5x70
18.19.3	2.1011.106.2	2	nut m 10 p.1.5
18.19.4	2.1475.103.2	2	washer 10.5
18.20	2.0122.361.2	1	screw m 10 p.1.25 x 30
18.21	2.1310.006.2	1	flat washer 10.5x21
21	0.019.2719.3/10	1	support dx/rh/re
22	0.019.2720.3/10	1	support sx/lh/li
23	01174738	4	flat washer 12.5x26x6

SELF-ADJUSTING FRONT FENDERS mm 540

Fig.	P/n	QTY	Name
------	-----	-----	------

Notes:

[6180 Agrottron ->WSXAT50200LD50010]



1.1	0.018.7702.3	1	support
1.2	0.014.4436.0/10	1	hub
1.3	2.2999.516.0	2	bearing
1.4	2.4099.142.2	1	spring dx/rh/re
1.5	2.1530.125.0	1	oil seal 50.47x2.62
1.6	2.1219.073.2	1	ring nut
1.7	0.018.2881.0	1	cover
1.8	2.0599.113.2	1	grub screw m 14 p.1.5
1.9	2.1475.005.2	1	washer 14
1.10	2.1011.508.2	1	nut m 14 p.1.5
1.11	0.018.2880.2	1	support
1.12	2.0123.715.2	1	screw m 18 p.1.5x40
1.13	0.018.7705.0	1	bush m18x1,5
1.14	2.1310.011.2	1	flat washer 19x34
1.15	2.1549.697.2	4	spacer 19x27x45
1.16	2.1530.033.0	4	oil seal 13.10x2.62
1.17	2.0112.625.2	4	screw m 16 p.2x80
1.18	2.1310.010.2	4	flat washer 17x30
1.19	0.018.6859.3	1	stop
1.19.2	2.0114.321.2	1	screw m 10 p.1.5x70
1.19.3	2.1011.106.2	2	nut m 10 p.1.5
1.19.4	2.1475.103.2	2	washer 10.5
1.20	2.0122.361.2	1	screw m 10 p 1.25 x 30
1.21	2.1310.006.2	1	flat washer 10.5x21
4	2.0112.420.2	4	screw m 12 p.1.75x55
5	2.1475.004.2	4	spring washer 12
6	2.1011.107.2	4	nut m 12 p.1.75
7	0.020.5210.0	2	fender mm 540
8	2.0349.004.0	8	screw m 8 p.1.25 x 30
9	2.1399.020.0/10	8	washer
10	2.1310.004.2	10	flat washer 8.4x17
11	2.1475.002.2	8	conical washer 8
12	2.1120.005.2	8	nut m 8 p.1.25
13	2.0020.306.2	4	screw m 10 x 25
14	2.1475.003.2	4	washer 10
15	2.1120.006.2	4	nut m 10 p.1.5
17	0.019.4607.0	4	plate
18.1	0.018.7702.3	1	support
18.2	0.014.4436.0/10	1	hub
18.3	2.2999.516.0	2	bearing
18.4	2.4099.143.2	1	spring sx/lh/li

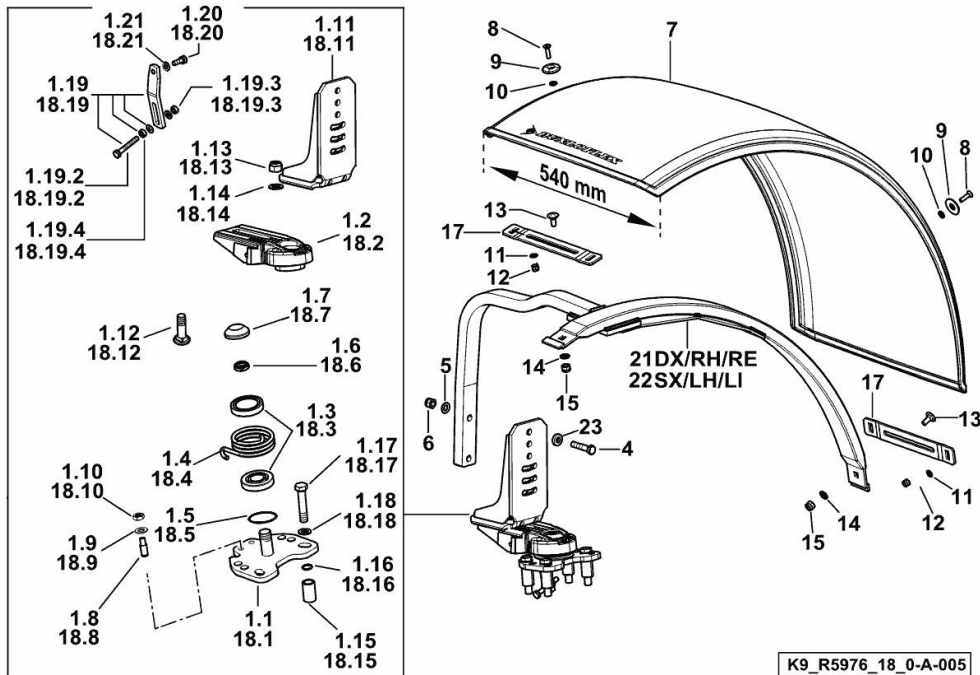
SELF-ADJUSTING FRONT FENDERS mm 540

Fig.	P/n	QTY	Name
18.5	2.1530.125.0	1	oil seal 50.47x2.62
18.6	2.1219.073.2	1	ring nut
18.7	0.018.2881.0	1	cover
18.8	2.0599.113.2	1	grub screw m 14 p.1.5
18.9	2.1475.005.2	1	washer 14
18.10	2.1011.508.2	1	nut m 14 p.1.5
18.11	0.018.2880.2	1	support
18.12	2.0123.715.2	1	screw m 18 p.1.5x40
18.13	0.018.7705.0	1	bush m18x1,5
18.14	2.1310.011.2	1	flat washer 19x34
18.15	2.1549.697.2	4	spacer 19x27x45
18.16	2.1530.033.0	4	oil seal 13.10x2.62
18.17	2.0112.625.2	4	screw m 16 p.2x80
18.18	2.1310.010.2	4	flat washer 17x30
18.19	0.018.6859.3	1	stop
18.19.2	2.0114.321.2	1	screw m 10 p.1.5x70
18.19.3	2.1011.106.2	2	nut m 10 p.1.5
18.19.4	2.1475.103.2	2	washer 10.5
18.20	2.0122.361.2	1	screw m 10 p.1.25 x 30
18.21	2.1310.006.2	1	flat washer 10.5x21
21	0.019.2719.3/10	1	support dx/rh/re
22	0.019.2720.3/10	1	support sx/lh/li
23	01174738	4	flat washer 12.5x26x6

SELF-ADJUSTING FRONT FENDERS mm 620

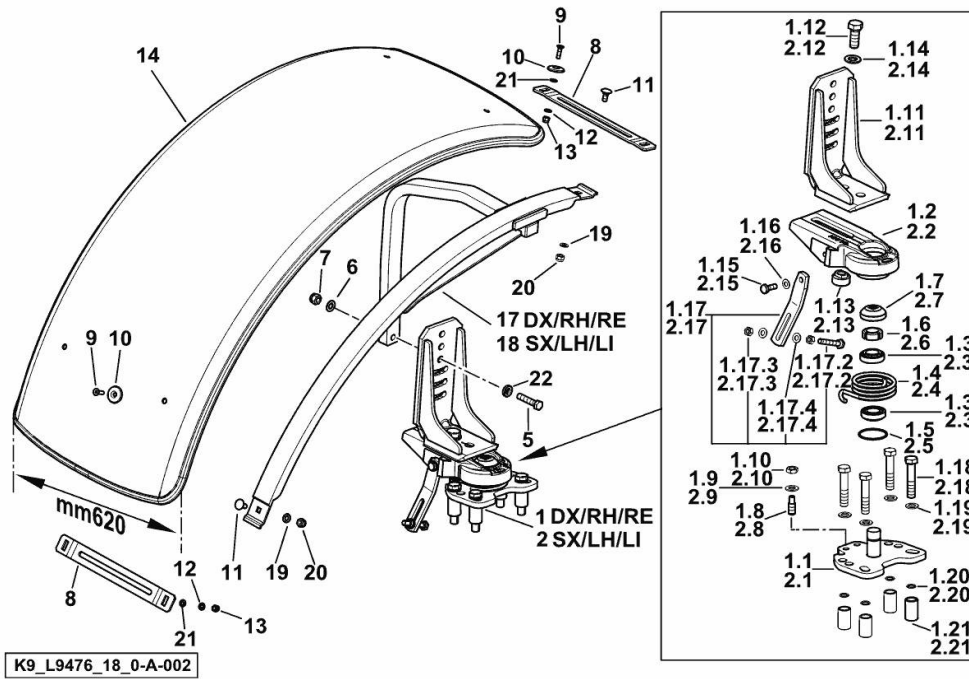


Fig.	P/n	QTY	Name
------	-----	-----	------

Notes:

[6180 Agrottron ->WSXAT50200LD50010]

1	0.014.8648.4/50	1	support dx/rh/re
1.1	0.018.7702.3	1	support
1.2	0.014.4436.0/10	1	hub
1.3	2.2999.516.0	2	bearing
1.4	2.4099.142.2	1	spring dx/rh/re
1.5	2.1530.125.0	1	oil seal 50.47x2.62
1.6	2.1219.073.2	1	ring nut
1.7	0.018.2881.0	1	cover
1.8	2.0599.113.2	1	grub screw m 14 p.1.5
1.9	2.1475.005.2	1	washer 14
1.10	2.1011.508.2	1	nut m 14 p.1.5
1.11	0.018.2880.2	1	support
1.12	2.0123.715.2	1	screw m 18 p.1.5x40
1.13	0.018.7705.0	1	bush m18x1,5
1.14	2.1310.011.2	1	flat washer 19x34
1.15	2.0122.361.2	1	screw m 10 p 1.25 x 30
1.16	2.1310.006.2	1	flat washer 10.5x21
1.17	0.018.6859.3	1	stop
1.17.2	2.0114.323.2	1	screw
1.17.3	2.1011.106.2	2	nut m 10 p.1.5
1.17.4	2.1475.103.2	2	washer 10.5
1.18	2.0112.625.2	4	screw m 16 p.2x80
1.19	2.1310.010.2	4	flat washer 17x30
1.20	2.1530.033.0	4	oil seal 13.10x2.62
1.21	2.1549.697.2	4	spacer 19x27x45
2	0.014.8651.4/50	1	support sx/lh/li
2.1	0.018.7702.3	1	support
2.2	0.014.4436.0/10	1	hub
2.3	2.2999.516.0	2	bearing
2.4	2.4099.143.2	1	spring sx/lh/li
2.5	2.1530.125.0	1	oil seal 50.47x2.62
2.6	2.1219.073.2	1	ring nut
2.7	0.018.2881.0	1	cover
2.8	2.0599.113.2	1	grub screw m 14 p.1.5
2.9	2.1475.005.2	1	washer 14
2.10	2.1011.508.2	1	nut m 14 p.1.5
2.11	0.018.2880.2	1	support
2.12	2.0123.715.2	1	screw m 18 p.1.5x40
2.13	0.018.7705.0	1	bush m18x1,5
2.14	2.1310.011.2	1	flat washer 19x34
2.15	2.0122.361.2	1	screw m 10 p 1.25 x 30

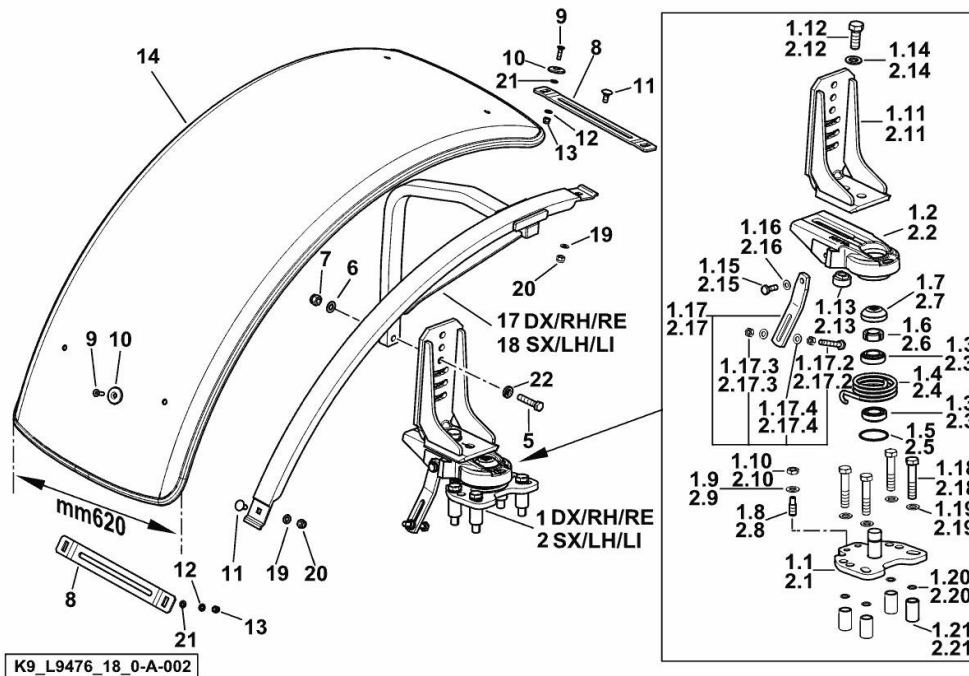
SELF-ADJUSTING FRONT FENDERS mm 620

Fig.	P/n	QTY	Name
2.16	2.1310.006.2	1	flat washer 10.5x21
2.17	0.018.6859.3	1	stop
2.17.2	2.0114.323.2	1	screw
2.17.3	2.1011.106.2	2	nut m 10 p.1.5
2.17.4	2.1475.103.2	2	washer 10.5
2.18	2.0112.625.2	4	screw m 16 p.2x80
2.19	2.1310.010.2	4	flat washer 17x30
2.20	2.1530.033.0	4	oil seal 13.10x2.62
2.21	2.1549.697.2	4	spacer 19x27x45
5	2.0112.421.2	2	screw m 12 p.1.75 x 60
6	2.1475.004.2	4	spring washer 12
7	2.1120.007.2	2	self-locking nut m 12 p.1.75
8	0.014.7167.0	4	support
9	2.0349.004.0	8	screw m 8 p.1.25 x 30
10	2.1399.020.0/10	8	washer
11	2.0020.306.2	4	screw m 10 x 25
12	2.1475.002.2	8	conical washer 8
13	2.1120.005.2	8	nut m 8 p.1.25
14	04433326/10	2	fender mm 620
17	0.019.6459.3	1	chassis frame dx/rh/re (-> 50015)
18	0.019.6460.3	1	chassis frame sx/lh/li (-> 50015)
19	2.1475.003.2	4	washer 10
20	2.1120.006.2	4	nut m 10 p.1.5
21	2.1310.004.2	8	flat washer 8.4x17
22	01174738	4	flat washer 12.5x26x6

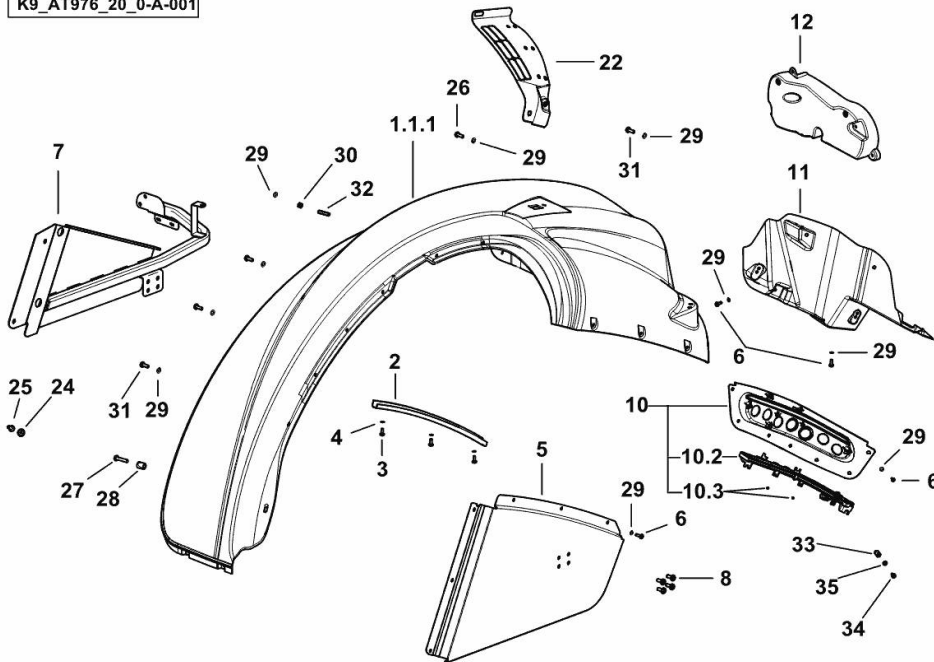
FENDER ASSEMBLY - DX/RH/RE

Fig.	P/n	QTY	Name
------	-----	-----	------

Notes:

- FOR TYPES WITH COURTESY LIGHT ON FENDER PUSHBUTTON PANEL [6180 Agrottron ->WSXAT50200LD50010]

K9_AT976_20_0-A-001



1.1.1	0.019.2314.2/10	1	fender dx/rh/re
2	0.019.4410.0	1	channel dx/rh/re
3	2.0330.406.2	36	screw m 6 p.1.0 x 16
4	2.1310.002.2	42	flat washer 6.4x12.5
5	0.019.4378.3/10	1	panel dx/rh/re
6	2.0330.407.2	5	screw m 6 p.1 x 20
7	0.019.7022.3/10	1	support dx/rh/re
8	2.0330.507.2	12	screw m 8 p.1.25 x 20
10	0.020.7058.4/10	1	front grille dx/rh/re
10.2	0.019.5137.4/10	1	light dx/rh/re
10.3	2.0363.003.2	2	screw 3x10
11	0.019.1298.0/20	1	cover dx/rh/re
12	0.019.1295.2	1	cover dx/rh/re
22	0.017.1168.0/10	1	front grille dx/rh/re
24	04419538	2	cap
25	04428727	2	screw
26	04426352	4	screw m 8 p.1.25 x 20
27	2.0112.215.2	2	screw m 8 p.1.25 x 40
28	04415539	2	bushing
29	2.1310.004.2	16	flat washer 8.4x17
30	2.1011.105.2	4	nut m 8 p.1.25
31	2.0112.207.2	8	screw m 8 p 1.25 x 20
32	2.0422.207.2	4	stud bolt m 8 p 1.25 x 30
33	0.020.5372.0	4	spacer
34	2.0330.206.2	4	screw m4x16 d933
35	2.1310.028.2	4	flat washer

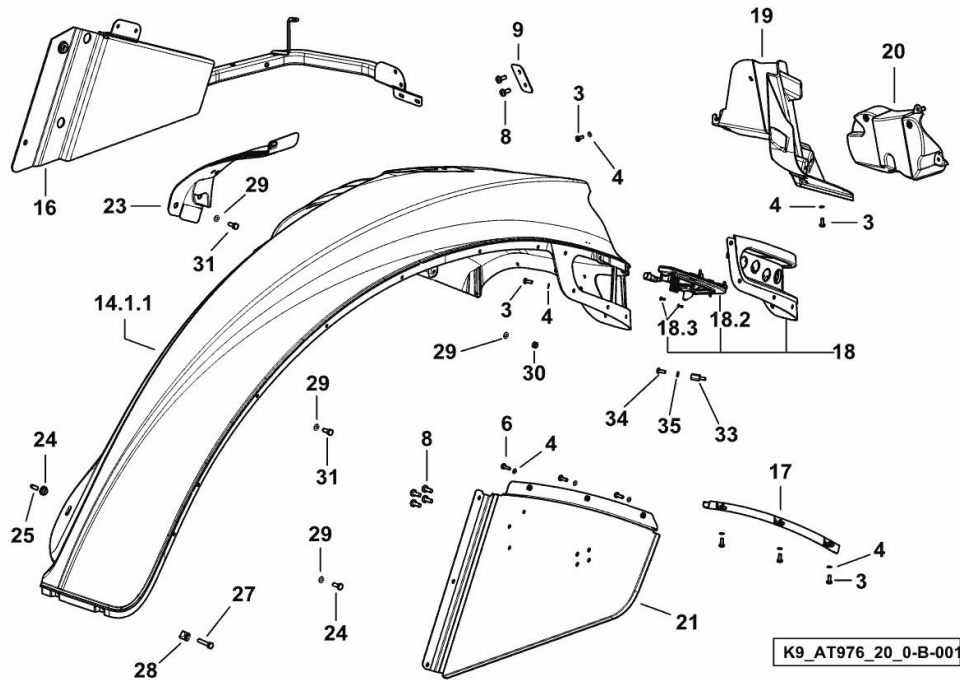
FENDER ASSEMBLY - SX/LH/LI

Fig.	P/n	QTY	Name
------	-----	-----	------

Notes:

- FOR TYPES WITH COURTESY LIGHT ON FENDER PUSHBUTTON PANEL [6180 Agrottron

->WSXAT50200LD50010]



3	2.0330.406.2	36	screw m 6 p.1.0 x 16
4	2.1310.002.2	42	flat washer 6.4x12.5
6	2.0330.407.2	5	screw m 6 p.1 x 20
8	2.0330.507.2	12	screw m 8 p.1.25 x 20
9	0.019.3255.3	2	small plate
14.1.1	0.020.8225.2	1	fender sx/lh/li
16	0.020.8217.3	1	brace sx/lh/li
17	0.019.4416.0	1	channel sx/lh/li
18	0.020.7060.4/10	1	front grille sx/lh/li
18.2	0.019.5138.4/10	1	light sx/lh/li
18.3	2.0363.003.2	2	screw 3x10
19	0.019.1305.0/20	1	cover sx/lh/li
20	0.019.1304.2	1	cover sx/lh/li
21	0.019.4398.3/30	1	panel sx/lh/li
23	0.017.1166.0/10	1	front grille sx/lh/li
24	04419538	2	cap
25	04428727	2	screw
27	2.0112.215.2	2	screw m 8 p.1.25 x 40
28	04415539	2	bushing
29	2.1310.004.2	16	flat washer 8.4x17
30	2.1011.105.2	4	nut m 8 p.1.25
31	2.0112.207.2	8	screw m 8 p 1.25 x 20
33	0.020.5372.0	4	spacer
34	2.0330.206.2	4	screw m4x16 d933
35	2.1310.028.2	4	flat washer

Buy Now



Our support email:

ebooklibonline@outlook.com