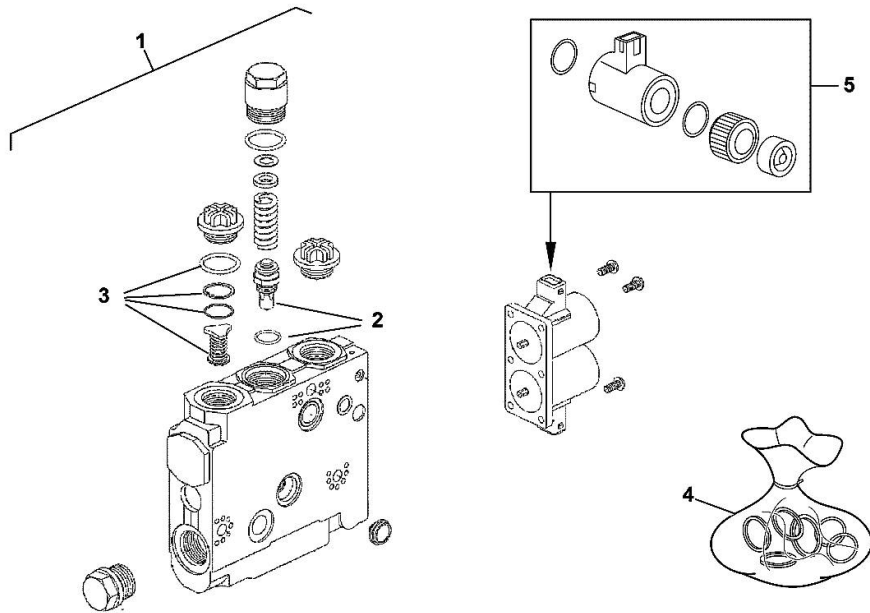


RELAY VALVE

Fig.	P/n	QTY	Name
1	2.3729.026.0	1	valve EHR 23 EM2
2	0.010.2441.1	1	electronic unit
3	0.900.2207.7	1	spare parts kit
4	0.900.0874.0	1	gasket set
5	04428919	2	solenoid valve



2.3729.026.0

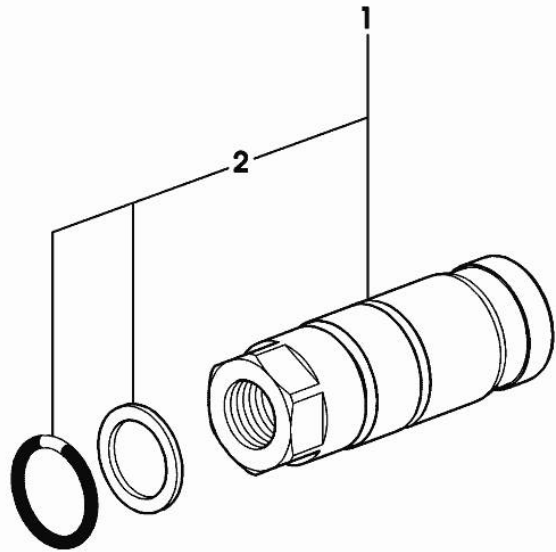
6180 Agrottron P-CShift ->WSXAT90200LD50010

Section: H0 - HYDRAULIC AND PNEUMATIC SYSTEM|

Ref: 2.3729.560.2

ENGAGEMENT

Fig.	P/n	QTY	Name
1	2.3729.560.2	1	coupling 3/8
2	0.900.0389.1	1	special oil seal



2_3729_560_2

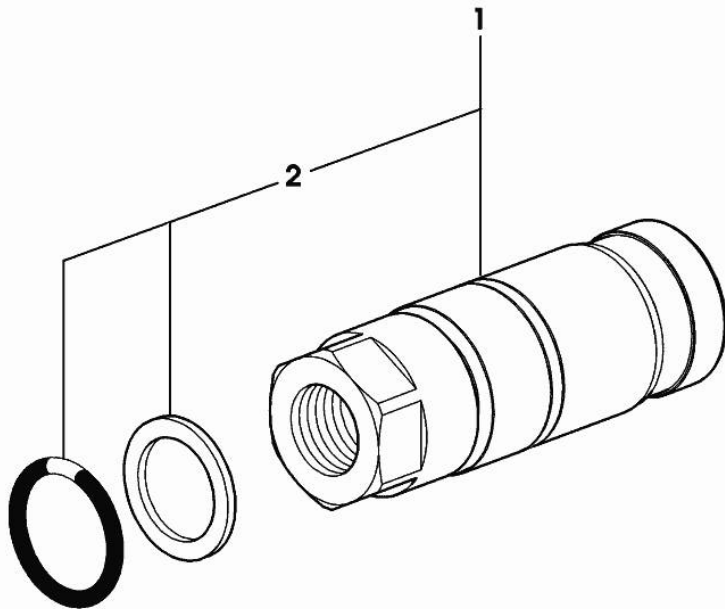
6180 Agrottron P-CShift ->WSXAT90200LD50010

Section: H0 - HYDRAULIC AND PNEUMATIC SYSTEM|

Ref: 2.3729.570.2

ENGAGEMENT

Fig.	P/n	QTY	Name
1	2.3729.570.2	1	coupling 3/4
2	0.900.0389.0	1	special oil seal



2_3729_570_2

6180 Agrottron P-CShift ->WSXAT90200LD50010

Section: H0 - HYDRAULIC AND PNEUMATIC SYSTEM]

Ref: H0.09.0 (1)

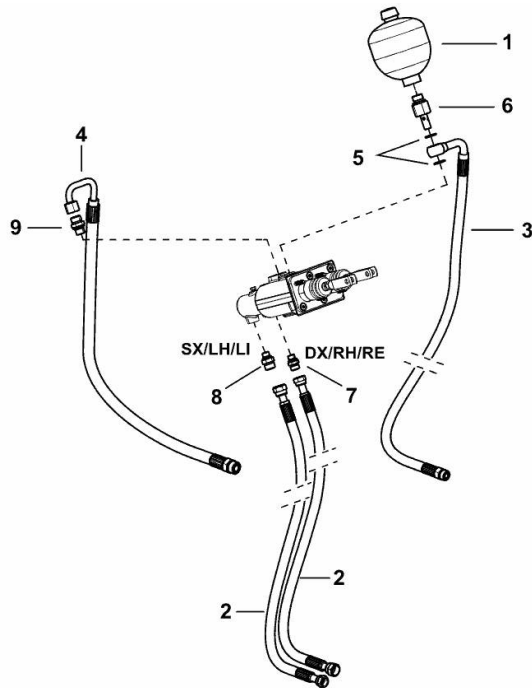
BRAKING SYSTEM

Fig.	P/n	QTY	Name
------	-----	-----	------

Notes:

[6180 Agrottron P-CShift ->WSXAT90200LD50010]

1	0.010.0428.0/10	1	accumulator
2	0.018.8321.3/10	2	tube
3	0.018.8327.3/10	1	tube
4	0.018.8364.3	1	tube
5	2.1531.048.0	2	oil seal 18.72x2.62
6	2.3249.349.2	1	pipe union
7	2.3275.005.0	1	pipe fitting m14x1.5
8	2.3275.009.0	1	pipe fitting m 14
9	2.3275.011.0	1	pipe fitting m 18



K9_U1566_41_0-A-001

6180 Agrottron P-CShift ->WSXAT90200LD50010

Section: H0 - HYDRAULIC AND PNEUMATIC SYSTEM|

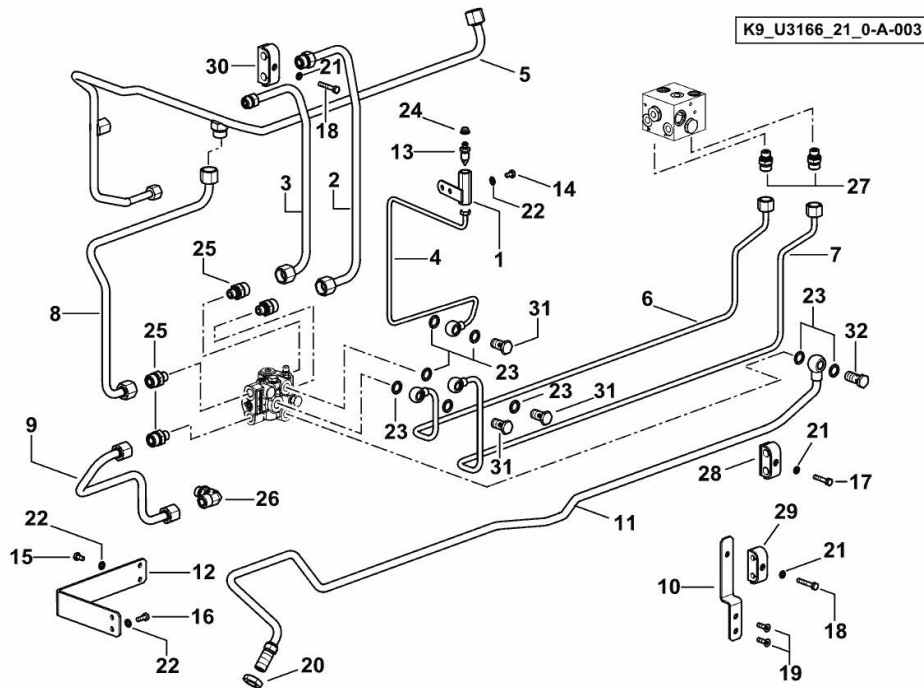
Ref: H0.09.1 (3)

BRAKE PIPES - FRONT

Fig.	P/n	QTY	Name
------	-----	-----	------

Notes:

- FOR TYPES WITH NON-ROBOTIC GEARBOX [6180 Agrottron P-CShift ->WSXAT90200LD50010]



1	0.018.4140.3	1	pipe fitting
2	0.018.7353.3	1	tube dx/rh/re
3	0.018.7354.3	1	tube sx/lh/li
4	0.018.7369.3	1	tube
5	0.019.8986.3	1	tube
6	0.018.7674.3	1	tube dx/rh/re
7	0.018.7675.3	1	tube sx/lh/li
8	0.018.7774.3	1	tube Ø 12
9	0.018.7961.3	1	tube Ø 12
10	0.019.0181.3	1	bracket
11	0.019.1704.3/10	1	tube
12	0.019.0779.0	1	bracket
13	0.170.5455.0	1	valve
14	2.0112.002.2	2	screw m 6 p.1 x 10
15	2.0112.003.2	2	screw m 6 p.1 x 12
16	2.0112.005.2	2	screw m 6 p.1 x 16
17	2.0112.011.2	1	screw m 6 p.1x30
18	2.0112.013.2	2	screw m 6 p.1 x 35
19	2.0342.205.6	2	screw m 6 p.1 x 20
20	2.1019.169.2	1	nut 11/16 "-16 UN-2B
21	2.1470.002.2	3	lock washer 6
22	2.1475.001.7	6	washer 6.4x12
23	2.1560.010.0	8	gasket 14.2 x 20
24	2.3199.039.0	1	plug
25	2.3249.313.2	4	pipe fitting m 14 p.1.5-13/16
26	2.3273.005.0	1	pipe fitting m 16
27	2.3275.005.0	2	pipe fitting m14x1.5
28	2.3320.210.0	1	collar Ø 12/12
29	2.3320.302.0	1	collar Ø 8/8
30	2.3320.311.0	1	collar Ø 12/12
31	2.3335.006.2	3	pipe union m 14 p.1.5X26
32	2.3335.053.2	1	pipe union m 14 p.1.5x32

6180 Agrottron P-CShift ->WSXAT90200LD50010

Section: H0 - HYDRAULIC AND PNEUMATIC SYSTEM]

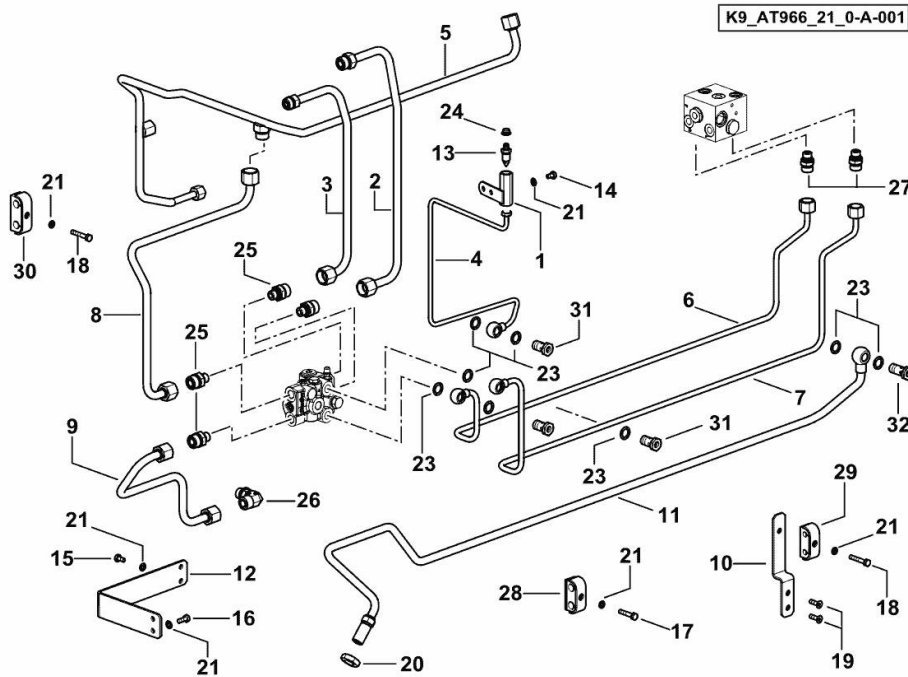
Ref: H0.09.2 (1)

BRAKE PIPES - FRONT

Fig.	P/n	QTY	Name
------	-----	-----	------

Notes:

- FOR TYPES WITH ROBOTIC GEARBOX [6180 Agrottron P-CShift ->WSXAT90200LD50010]



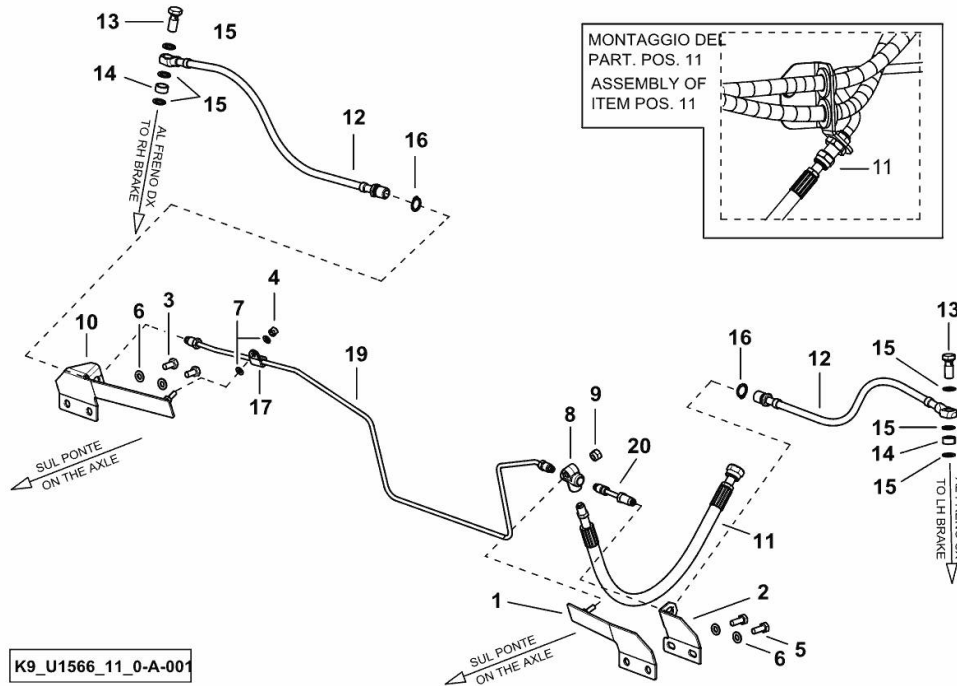
1	0.018.4140.3	1	pipe fitting
2	0.018.7353.3	1	tube dx/rh/re
3	0.018.7354.3	1	tube sx/lh/li
4	0.018.7369.3	1	tube
5	0.020.8425.3	1	tube
6	0.018.7674.3	1	tube dx/rh/re
7	0.018.7675.3	1	tube sx/lh/li
8	0.018.7774.3	1	tube Ø 12
9	0.018.7961.3	1	tube Ø 12
10	0.019.0181.3	1	bracket
11	0.019.1704.3/10	1	tube
12	0.019.0779.0	1	bracket
13	0.170.5455.0	1	valve
14	2.0112.002.2	2	screw m 6 p.1 x 10
15	2.0112.003.2	2	screw m 6 p.1 x 12
16	2.0112.005.2	2	screw m 6 p.1 x 16
17	2.0112.011.2	1	screw m 6 p.1x30
18	2.0112.013.2	2	screw m 6 p.1 x 35
19	2.0342.205.6	2	screw m 6 p.1 x 20
20	2.1019.169.2	1	nut 11/16 "-16 UN-2B
21	2.1475.001.7	9	washer 6.4x12
23	2.1560.010.0	8	gasket 14.2 x 20
24	2.3199.039.0	1	plug
25	2.3249.313.2	4	pipe fitting m 14 p.1.5-13/16
26	2.3273.005.0	1	pipe fitting m 16
27	2.3275.005.0	2	pipe fitting m14x1.5
28	2.3320.210.0	1	collar Ø 12/12
29	2.3320.302.0	1	collar Ø 8/8
30	2.3320.311.0	1	collar Ø 12/12
31	2.3335.006.2	3	pipe union m 14 p.1.5X26
32	2.3335.053.2	1	pipe union m 14 p.1.5x32

BRAKE PIPES - FRONT

Fig.	P/n	QTY	Name
------	-----	-----	------

Notes:

[6180 Agrottron P-CShift ->WSXAT90200LD50010]



1	04453771.3	1	support sx/lh/li
2	04453773	1	support sx/lh/li
3	2.0112.205.2	2	screw m 8 p.1.25 x 16
4	2.1120.003.2	1	self-locking nut m 6
5	2.0112.207.2	2	screw m 8 p 1.25 x 20
6	2.1310.004.2	4	flat washer 8.4x17
7	2.1311.004.2	3	flat washer 6, d128
8	03499196	1	pipe fitting T
9	2.1120.005.2	1	nut m 8 p.1.25
10	04454722.2	1	support dx/rh/re
11	0.018.1969.3/10	1	tube mm 510
12	0.016.0256.3	2	tube
13	2.3339.361.2/10	2	pipe union m 12 p.1.25 x 28
14	2.1579.765.2/10	2	spacer 12.5 x 18 x 8.0
15	2.1560.008.0	6	gasket 12.2 x 18
16	2.1410.004.2	2	circlip 16
17	01171262	1	fascia b 6x15 h3223
19	0.016.3360.3	1	tube
20	04453781	1	tube

K9_U1566_11_0-A-001

Buy Now



Our support email:

ebooklibonline@outlook.com