



MT50

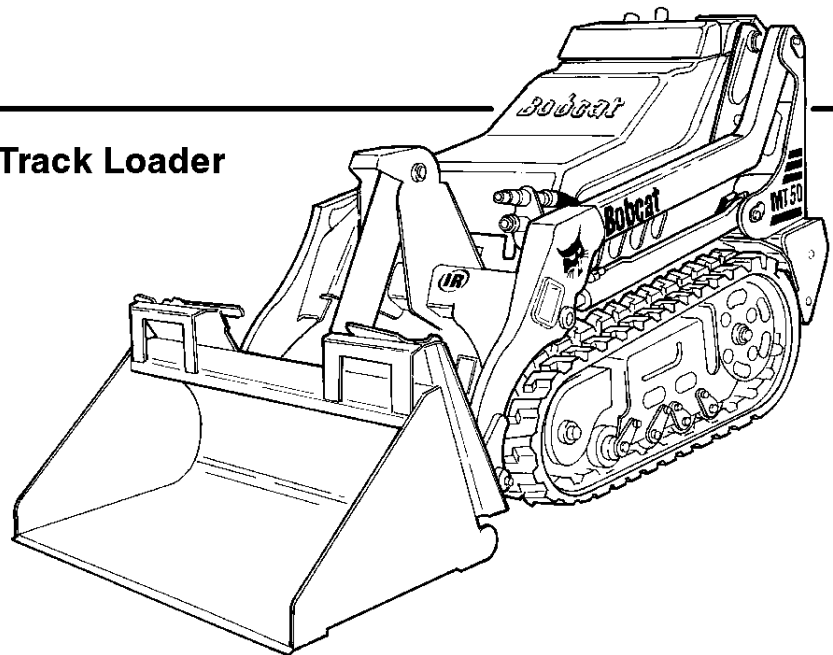


Bobcat®

Parts Manual

**S/N 5206 11001 & ABOVE
S/N 5224 11001 & ABOVE**

Mini Track Loader



MT50 ALPHABETICAL INDEX

AIR CLEANER	136	INJECTION PUMP	122
ALTERNATOR	78	INJECTOR NOZZLES	128
ANTI-FREEZE	148	LIFT ARM	16
BATTERY	74	LIGHT KIT	146
BELT, ALTERNATOR	80	MAIN FRAME	12
BLACK GOLD	148	MANIFOLD, EXHAUST	120
BLOCK, ENG.	102	MANIFOLD, INTAKE	120
BOB-TACH	18	MOTOR, DRIVE	68
BRAKES	26	MOUNT ENGINE	84
CABLE, BATTERY	74	MUFFLER	82
CAMSHAFT	108	OIL	148
CAMSHAFT, FUEL	110	OIL COOLER	32
CAP, HYD. OIL	32	OIL PAN	98
CAP, RADIATOR	80	OIL PUMP, ENGINE	102
COUNTERWEIGHT	12	PAINT	148
COVER, VALVE	92	PISTON, ENG.	104
CRANKCASE	102	PUMP, FUEL	122
CRANKSHAFT	104	PUMP, GEAR	32
CYLINDER, LIFT	36	PUMP, INJECTION	122, 124
CYLINDER, TILT	38	PUMP, WATER	116
DECAL KIT	142, 144	RADIATOR	80
DIPSTICK, ENG. OIL	98	REAR DOOR	22
ENGINE	90	SOLENOID, SHUTDOWN	114
EXHAUST PIPE	82	STARTER	76
FILTER, AIR	136	SWITCH, ENG. OIL PRESS	74, 102
FILTER, ENGINE OIL	100	SWITCH, HYDRO. TEMP	74
FILTER, FUEL	20	TANK, FUEL	20
FILTER, HYD. OIL	32	THERMOSTAT	118
FLYWHEEL	84	THROTTLE	86
FUEL GAUGE	20	VALVE COVER	92
FUEL PUMP	122	VALVE, ENG	94
GASKET KIT ENGINE	132, 134	WATER PUMP	116
GEARCASE	100		
GLOW PLUG	126		
HARNESS CONSOLE	72		
HARNESS ENGINE	74		
HEAD, CYLINDER	96		

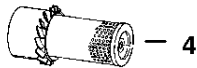
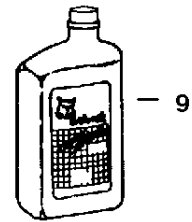
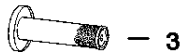
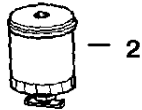
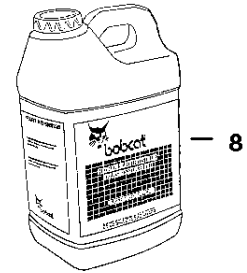
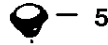
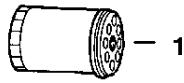
MT50 CONTENTS

MAIN FRAME	11-22
MAIN FRAME	11-14
LIFT ARMS & BOB-TACH	15-16
BOB-TACH	17-18
FUEL SYSTEM	19-20
REAR DOOR	21-22
DRIVE TRAIN	23-26
DRIVE TRAIN	23-24
BRAKES	25-26
HYDRAULIC SYSTEM	27-70
HYDRAULIC CIRCUITRY	27-34
LIFT CYLINDER	35-36
TILT CYLINDER	37-38
SPEED CONTROL VALVE	39-40
3-WAY VALVE	41-42
6-WAY VALVE	43-44
VALVE SECTION	45-64
HAND CONTROLS	65-66
DRIVE MOTOR	67-68
GEAR PUMP	69-70
ELECTRICAL SYSTEM	71-78
CONSOLE ELECTRICAL CIRCUITRY	71-72
ENGINE ELECTRICAL CIRCUITRY	73-74
STARTER	75-76
ALTERNATOR	77-78
ENGINE & ATTACHING PARTS	79-136
ENGINE & ATTACHING PARTS	79-84
THROTTLE	85-86
BLOWER ASSEMBLY	87-88
ENGINE & GASKET KITS	89-90
ROCKER ARM COVER	91-92
ROCHER ARM & VALVES	93-94
CYLINDER HEAD	95-96
OIL PAN	97-98
GEARCASE	99-100
CRANKCASE	101-102
PISTON & CRANKSHAFT	103-104
MAIN BEARING CASE	105-106
CAMSHAFT	107-108
FUEL CAMSHAFT	109-110
GOVERNOR GROUP	111-112
SPEED CONTROL & STOP LEVER	113-114
WATER PUMP	115-116
WATER FLANGE & THERMOSTAT	117-118
MANIFOLDS	119-120
FUEL & INJECTION PUMP	121-122
INJECTION PUMP	123-124
INJECTOR NOZZLES	125-126
NOZZLE HOLDER	127-130
LOWER GASKET KIT	131-132
UPPER GASKET KIT	133-134
AIR FILTER	135-136
ACCESSORIES & OPTIONS	139-148
* ATTACHMENT CONTROL KIT	139-140
DECALS	141-144
* LIGHT KIT	145-146
BULT ITEMS	147-148
NUMERICAL INDEX	149-171
NUMERICAL INDEX	149-171

MT50 CONTENTS

MAIN FRAME	11-22
MAIN FRAME	11-14
LIFT ARMS & BOB-TACH	15-16
BOB-TACH	17-18
FUEL SYSTEM	19-20
REAR DOOR	21-22
DRIVE TRAIN	23-26
DRIVE TRAIN	23-24
BRAKES	25-26
HYDRAULIC SYSTEM	27-70
HYDRAULIC CIRCUITRY	27-34
LIFT CYLINDER	35-36
TILT CYLINDER	37-38
SPEED CONTROL VALVE	39-40
3-WAY VALVE	41-42
6-WAY VALVE	43-44
VALVE SECTION	45-64
HAND CONTROLS	65-66
DRIVE MOTOR	67-68
GEAR PUMP	69-70
ELECTRICAL SYSTEM	71-78
CONSOLE ELECTRICAL CIRCUITRY	71-72
ENGINE ELECTRICAL CIRCUITRY	73-74
STARTER	75-76
ALTERNATOR	77-78
ENGINE & ATTACHING PARTS	79-136
ENGINE & ATTACHING PARTS	79-84
THROTTLE	85-86
BLOWER ASSEMBLY	87-88
ENGINE & GASKET KITS	89-90
ROCKER ARM COVER	91-92
ROCHER ARM & VALVES	93-94
CYLINDER HEAD	95-96
OIL PAN	97-98
GEARCASE	99-100
CRANKCASE	101-102
PISTON & CRANKSHAFT	103-104
MAIN BEARING CASE	105-106
CAMSHAFT	107-108
FUEL CAMSHAFT	109-110
GOVERNOR GROUP	111-112
SPEED CONTROL & STOP LEVER	113-114
WATER PUMP	115-116
WATER FLANGE & THERMOSTAT	117-118
MANIFOLDS	119-120
FUEL & INJECTION PUMP	121-122
INJECTION PUMP	123-124
INJECTOR NOZZLES	125-126
NOZZLE HOLDER	127-130
LOWER GASKET KIT	131-132
UPPER GASKET KIT	133-134
AIR FILTER	135-136
ACCESSORIES & OPTIONS	139-148
* ATTACHMENT CONTROL KIT	139-140
DECALS	141-144
* LIGHT KIT	145-146
BULK ITEMS	147-148
NUMERICAL INDEX	149-171
NUMERICAL INDEX	149-171

MAINTENANCE ITEMS MODEL MT50



Ref.	Part Number	Description	Remarks	Page
1	6671057	FILTER, ENGINE OIL		99
2	6667352	FUEL FILTER		20
3	6673753	AIR CLEANER (INNER)		136
4	6673752	AIR CLEANER (OUTER)		136
5	6646678	RADIATOR CAP		79
6	6653336	HYDRAULIC FILTER		32
7	6674687	BATTERY		73
		(Hydraulic Reservoir)	5.3 Qts. (5 L.)	
		(Hydraulic/Hydrostatic System)	4.0 Gals. (15 L.)	
8	6563328	FLUID, Hyd./Hydro. Fluid - (2) 2.5 Gal. - (5 Gal)		147
	6722344	FLUID, Hyd./Hydro. - (5 Gal.)		147
	6563330	FLUID, 55 Gallon Drum		147
		(Engine Oil W/Filter)	4.0 QTS. (3,8 L.)	
9	6657301	MOTOR OIL	10W30 CE/SG - 1 Qt.	147
	6724557	MOTOR OIL	10W30 CE/SG - 1 Gal.	147
	6674205	MOTOR OIL	10W30 CE/SG - 2.5 Gal.	147
	6657299	MOTOR OIL	15W40 CE/SG - 1 Qt.	147
	6724558	MOTOR OIL	15W40 CE/SG - 1 Gal.	147
	6674204	MOTOR OIL	15W40 CE/SG - 2.5 Gal.	147
	6657303	MOTOR OIL	30 CE/SG - 1 Qt.	147
	6724559	MOTOR OIL	30 CE/SG - 1 Gal.	147
	6674206	MOTOR OIL	30 CE/SG -2.5 Gal.	147

GENERAL INFORMATION

When using the machine serial number, use the complete number. When Serial Numbers do not appear below the page heading, parts information applies to all loaders.

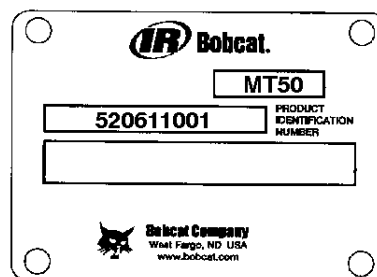
Some Serial Number breaks are not available at time of printing. These are listed as & Below or & Above.

The number shown in the quantity column in this manual is the number of parts needed for the illustration on the page. For some parts an "x" will be shown in the quantity column. This "x" indicates that the quantity to be used is "As Needed".

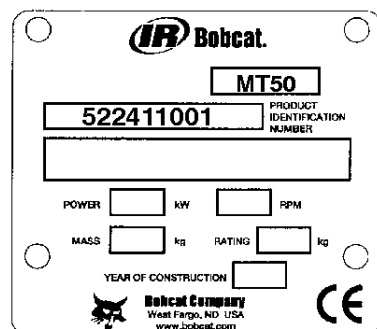
When references L.H. and R.H. are used in this manual, it is done from the operator's seat in the forward operating position.

To find the size and kind of bolt use the Bobcat Standard Microfiche (P/N 6566077).

Some of the illustrations and information found in this parts manual were supplied to Bobcat Company by machine component companies.



DOMESTIC



European

ABBREVIATIONS & SYMBOLS

SALES = Order from Gwinner Sales Department

NSS = Not Serviced Separately

NAP = Not Available as Parts

* = Changed or Added Sections, Pages or Part Number

Disposition Code Definition (Found in the Remarks Column)

[A] = Use Up

[B] = Use Up on Other Application (See PNI)

[C] = File PDR Report With Bobcat Parts Sales

[D] = Part Number Error

Explications en francais	Grid Nb	3
Erklärungen auf deutsch	Grid Nb	4
Spiegazioni in italiano	Grid Nb	5
Explicaciones en espanol	Grid Nb	6
Verklaring in het Nederlands	Grid Nb	7

NOTE D'INFORMATION

Pour toute référence au numéro de série de l'engin, toujours donner le numéro complet.

Le chiffré apparaissant dans la colonne des quantités de ce manuel représentent le nombre de pièces nécessaires pour l'illustration reprise sur la page. Dans certains cas, on lira un "x" dans la colonne des quantités. Cet "x" indique que la quantité nécessaire est "selon besoin".

Pour toute référence vers la GAUCHE ou la DROITE dans ce manuel, considérer que la personne se trouve assise dans le siège de l'opérateur, en position de fonctionnement en marche avant.

Certaines illustrations et informations reprises dans ce manuel de pièces de rechange ont été fournies à Bobcat par des fabricants de composants.

ABREVIATIONS & SYMBOLES

SALES	= Commander au Service Ventes à Bruxelles
NSS	= Pas vendu séparément
NAP	= Non disponible comme pièce de rechange
*	= Chapitre, page ou numéro de pièce modifié ou supplémentaire
BTI	= Bobcat Technical Information Bulletin : voir à la fin de la microfiché du modèle concerné ou la microfiche générale reprenant l'ensemble des "BTI".
was 6535403	= était avant 6535403
adj. (adjustment)	= réglage
Assembly	= ensemble
available W/Ref.	= disponible avec réf.
bulk/sold per foot	= en vrac/vendu par pied
does not include	= ne comprend pas
included with	= compris dans
I.D.	= D.I. (diamètre intérieur)
O.D.	= D.E. (diamètre extérieur)
not in kit	= pas en kit
W/ - WO/	= inclus/ - non inclus/
Qty	= quantité requise
see page/ref.	= voir page/réf.
used with ref/	= utilisé avec réf.
0,05 inch thickness	= 0,05 pouce d'épaisseur (un pouce = 25.4 mm)
weld on	= à souder

ALLGEMEINE INFORMATIONEN

Bei Angabe der Maschinen-Seriennummer stets die komplette Nummer angeben.

Bei der in der Mengenspalte (Anzahl) in diesem Handbuch angegebenen Zahl handelt es sich um die Anzahl von Teilen, die für die Abbildung auf der betreffenden Seite benötigt werden. Bei manchen Teilen in der Mengenspalte ist ein "x" angegeben. Dieses "x" weist darauf hin, dass sich die Anzahl der verwendeten Teile auf den "Bedarf" bezieht.

Bei Verwendung der Seitenangaben links und rechts in diesem Handbuch gelten diese für die Blickrichtung vom Fahrersitz aus, und zwar in Vorwärts-Betriebsrichtung.

Einige der in diesem Ersatzteilhandbuch aufgeführten Abbildungen und Informationen wurden der Bobcat von den Herstellern von Maschinenbauteilen zur Verfügung gestellt.

ABKÜRZUNGEN UND SYMBOLE

SALES	= Bestellung bei der Verkaufsabteilung in Brüssel
NSS	= Nicht einzeln erhältlich
NAP	= Nicht als Ersatzteil erhältlich
*	= Geänderte oder hinzugefügte Abschnitte, Seiten oder Teilenummern
BTI	= Bobcat Technical Information Bulletin : Siehe am Ende der Mikrokarte des jeweiligen Modells oder der allgemeinen Mikrokarte der BTI.
was 6535403	= War 6535403
adj.	= Einstellung
Assembly	= Baugruppe
available W/Ref.	= erhältlich mit der Referenz
bulk/sold per foot	= Mengenabnahme / Verkauf pro Fuss
does not include	= beinhaltet nicht
included with	= enthalten in
I.D.	= Innendurchmesser
O.D.	= Aussendurchmesser
not in kit	= nicht in Bausatz
W/ - WO/	= mit/ - ohne/
Qty	= Anzahl
see page/ref.	= Siehe Seite / Referenz
used with ref.	= verwendet mit Referenz
0.05 inch thickness	= Dicke : 0.05 Zoll (ein Zoll = 25.4 mm)
weld on	= anschweissen

INFORMAZIONI GENERALI

Quando si usa il numero di serie della macchina usare il numero completo.

Il numero mostrato nella colonna della quantità di questo manuale corrisponde al numero di componenti necessari per l'illustrazione della pagina. Per alcuni componenti appare "X" nella colonna delle quantità. Questa "X" indica che la quantità da usare è "come necessario".

See in questo manuale si fa riferimento alla parte destra o sinistra, si intende dal sedile dell'operatore nella posizione in avanti di funzionamento.

Alcune delle illustrazioni e informazioni trovate in questo manuale di componenti sono state fornite alla Bobcat da società di componenti di macchine.

SIMBOLI E ABBREVIAZIONI

SALES	= Ordinare al servizio vendite di Bruxelles
NSS	= Non vendute separatamente
NAP	= Non disponibile come componente
*	= Sezioni, pagine o numeri di componente cambiati o aggiunti
BTI	= (Bobcat Technical information) Ved. al termine del microfiche del modello relativo oppure microfiche generale
was 6535403	= era 6535403
adj. (adjustment)	= regol. (regolazione)
Assembly	= Complessivo
available W/ref.	= disponibile con rif.
bulk/sold per foot	= alla rinfusa/venduto al piede
does not include	= non comprende
Included with	= compreso con
I.D.	= d. i.
O.D.	= d. e.
not in kit	= non fa parte del kit
W/ - WO/	= con - senza
Qty	= Qtà
see page/ref	= ved. pagina/rif.
used with ref.	= usato con il rif.
0,05 inch thickness	= spessore 0,05 pollici (un pollice = 25,4 mm)
weld on	= a saldare

Buy Now



Our support email:

ebooklibonline@outlook.com