

S130

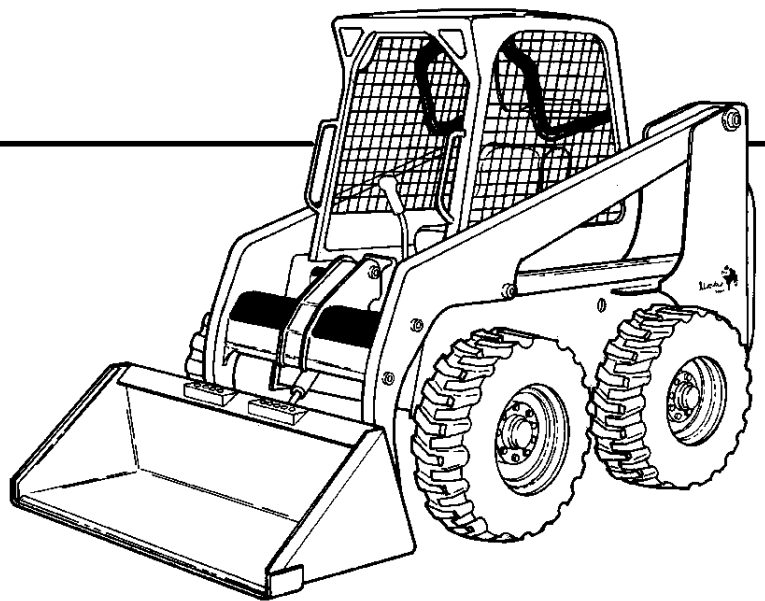


Bobcat®

Parts Manual

S/N 5246 11001 & Above

S/N 5247 11001 & Above



**EQUIPPED WITH
BOBCAT INTERLOCK
CONTROL SYSTEM (BICS™)**



S130 CONTENTS

MAINTENANCE	11-16
MAINTENANCE ITEMS	11-12
MAINTENANCE SCHEDULE ITEMS	13-16
MAIN FRAME	18-39
MAIN FRAME	18-19
OPERATOR CAB	20-23
SEAT & SEAT BAR	24-25
SEAT	26-27
PANELS	28-29
REAR DOOR	30-31
LIFT ARM & BOB-TACH	32-33
BOB-TACH	34-35
FUEL SYSTEM	36-39
DRIVE TRAIN	40-47
DRIVE TRAIN	40-41
MOTOR CARRIER	42-43
DISC BRAKE	44-45
AXLE	46-47
HYDRAULIC CIRCUITRY	48-77
HYDRAULIC CIRCUITRY	48-53
MANUAL LIFT RELEASE SYSTEM	54-55
AUXILIARY HYDRAULICS	56-57
TILT CYLINDER	58-59
LIFT CYLINDER	60-61
CONTROL PEDALS	62-63
HYDRAULIC CONTROL VALVE	64-71
BICS CONTROL VALVE	72-73
MANUAL LIFT RELEASE VALVE	74-75
BUCKET POSITIONING VALVE	76-77
HYDROSTATIC CIRCUITRY	78-101
HYDROSTATIC CIRCUITRY	78-81
HAND CONTROLS	82-85
HYDROSTATIC MOTOR	86-87
HYDROSTATIC PUMP	88-95
GEAR PUMP	96-97
HYDROSTATIC OIL FILTER	98-101
ELECTRICAL SYSTEM	102-121
CAB ELECTRICAL CIRCUITRY	102-103
ENGINE ELECTRICAL CIRCUITRY	104-107
CONTROLS ELECTRICAL	108-117
ALTERNATOR	118-119
STARTER	120-121
POWER UNIT	122-181
COOLING SYSTEM	122-125
ENGINE & ATTACHING PARTS	126-135
THROTTLE	136-137
COOLING FAN DRIVE ASSY	138-139
ENGINE & GASKET KITS	140-141
ENGINE BREAKDOWN	142-143
CRANKCASE	144-145
ROCKER ARM COVER	146-147
VALVE ROCKER ARM	148-149
CYLINDER HEAD	150-151
OIL PAN	152-153

S130 CONTENTS (Cont'd)

POWER UNIT (CONT'D)	122-181
PISTON & CRANKSHAFT	154-155
FUEL CAMSHAFT	156-157
CAMSHAFT	158-159
WATER PUMP	160-161
WATER FLANGE & THERMOSTAT	162-163
MANIFOLDS	164-165
ENGINE STOP LEVER	166-167
GOVERNOR	168-169
SPEED CONTROL PLATE	170-171
INJECTION PUMP	172-175
INJECTOR NOZZLES	176-177
INJECTOR HOLDER	178-179
AIR CLEANER	180-181
ACCESSORIES & OPTIONS	185-322
ACS CONVERSION KIT	185-186
ACCESS COVER	187-188
ACCESSORIES HARNESS	189-190
AIR DEFLECTOR KIT	191-192
AXLE SEAL KIT	193-194
BACK-UP ALARM	195-196
BEACON	197-198
BLOCK HEATER	199-200
BOB-TACH LEVERS	201-202
BUCKET POSITIONING VALVE KIT	203-204
CAB DOOR	205-218
CAB ENCLOSURE	219-222
CAB WINDOWS	223-226
COUNTERWEIGHT KIT	227-228
DECALS	229-232
DELUXE CAB	233-234
ELECTRICAL CONNECTOR KIT	235-236
ELECTRICAL CONTROLS KIT	237-242
ENGINE MOUNT KIT	243-244
EUROPEAN ACCESSORIES	245-248
FIRE EXTINGUISHER	249-250
F.O.P.S. KIT	251-252
FLASHER LIGHTS	253-254
GAS SPRING KIT	255-256
HAND CONTROL KIT	257-260
HEATER KIT	261-262
HEATER	263-268
HEATER PLUMBING KIT	269-270
HORN KIT	271-272
LIFT KIT	273-276
LIGHT KIT	277-278
MUFFLER/PURIFIER KIT	279-280
POWER BOB-TACH KIT	281-282
POWER BOB-TACH	283-286
RADIATOR SCREEN KIT	287-288
REAR AUXILIARY KIT	289-290
REAR AUXILIARY VALVE	291-292
REAR DOOR LOCK	293-294
REAR WIPER	295-296
SEAL ENCLOSURE KIT	297-298

S130 CONTENTS (Cont'd)

ACCESSORIES & OPTIONS (CONT'D)	185-322
SEAT	299-302
SEAT BELT	303-308
SOUND KIT	309-310
SOUND OPTION	311-312
SOUND REDUCTION HARDHAT	313-314
STROBE LIGHT	315-316
TIRES & RIMS	317-320
BULK ITEMS	321-322
NUMERICAL INDEX	323-363
NUMERICAL INDEX	323-363

S130 CONTENTS

MAINTENANCE	11-16
MAINTENANCE ITEMS	11-12
MAINTENANCE SCHEDULE ITEMS	13-16
MAIN FRAME	18-39
MAIN FRAME	18-19
OPERATOR CAB	20-23
SEAT & SEAT BAR	24-25
SEAT	26-27
PANELS	28-29
REAR DOOR	30-31
LIFT ARM & BOB-TACH	32-33
BOB-TACH	34-35
FUEL SYSTEM	36-39
DRIVE TRAIN	40-47
DRIVE TRAIN	40-41
MOTOR CARRIER	42-43
DISC BRAKE	44-45
AXLE	46-47
HYDRAULIC CIRCUITRY	48-77
HYDRAULIC CIRCUITRY	48-53
MANUAL LIFT RELEASE SYSTEM	54-55
AUXILIARY HYDRAULICS	56-57
TILT CYLINDER	58-59
LIFT CYLINDER	60-61
CONTROL PEDALS	62-63
HYDRAULIC CONTROL VALVE	64-71
BICS CONTROL VALVE	72-73
MANUAL LIFT RELEASE VALVE	74-75
BUCKET POSITIONING VALVE	76-77
HYDROSTATIC CIRCUITRY	78-101
HYDROSTATIC CIRCUITRY	78-81
HAND CONTROLS	82-85
HYDROSTATIC MOTOR	86-87
HYDROSTATIC PUMP	88-95
GEAR PUMP	96-97
HYDROSTATIC OIL FILTER	98-101
ELECTRICAL SYSTEM	102-121
CAB ELECTRICAL CIRCUITRY	102-103
ENGINE ELECTRICAL CIRCUITRY	104-107
CONTROLS ELECTRICAL	108-117
ALTERNATOR	118-119
STARTER	120-121
POWER UNIT	122-181
COOLING SYSTEM	122-125
ENGINE & ATTACHING PARTS	126-135
THROTTLE	136-137
COOLING FAN DRIVE ASSY	138-139
ENGINE & GASKET KITS	140-141
ENGINE BREAKDOWN	142-143
CRANKCASE	144-145
ROCKER ARM COVER	146-147
VALVE ROCKER ARM	148-149
CYLINDER HEAD	150-151

S130 CONTENTS (Cont'd)

POWER UNIT (CONT'D)	122-181
OIL PAN	152-153
PISTON & CRANKSHAFT	154-155
FUEL CAMSHAFT	156-157
CAMSHAFT	158-159
WATER PUMP	160-161
WATER FLANGE & THERMOSTAT	162-163
MANIFOLDS	164-165
ENGINE STOP LEVER	166-167
GOVERNOR	168-169
SPEED CONTROL PLATE	170-171
INJECTION PUMP	172-175
INJECTOR NOZZLES	176-177
INJECTOR HOLDER	178-179
AIR CLEANER	180-181
ACCESSORIES & OPTIONS	185-322
ACS CONVERSION KIT	185-186
ACCESS COVER	187-188
ACCESSORIES HARNESS	189-190
AIR DEFLECTOR KIT	191-192
AXLE SEAL KIT	193-194
BACK-UP ALARM	195-196
BEACON	197-198
BLOCK HEATER	199-200
BOB-TACH LEVERS	201-202
BUCKET POSITIONING VALVE KIT	203-204
CAB DOOR	205-218
CAB ENCLOSURE	219-222
CAB WINDOWS	223-226
COUNTERWEIGHT KIT	227-228
DECALS	229-232
DELUXE CAB	233-234
ELECTRICAL CONNECTOR KIT	235-236
ELECTRICAL CONTROLS KIT	237-242
ENGINE MOUNT KIT	243-244
EUROPEAN ACCESSORIES	245-248
FIRE EXTINGUISHER	249-250
F.O.P.S. KIT	251-252
FLASHER LIGHTS	253-254
GAS SPRING KIT	255-256
HAND CONTROL KIT	257-260
HEATER KIT	261-262
HEATER	263-268
HEATER PLUMBING KIT	269-270
HORN KIT	271-272
LIFT KIT	273-276
LIGHT KIT	277-278
MUFFLER/PURIFIER KIT	279-280
POWER BOB-TACH KIT	281-282
POWER BOB-TACH	283-286
RADIATOR SCREEN KIT	287-288
REAR AUXILIARY KIT	289-290
REAR AUXILIARY VALVE	291-292
REAR DOOR LOCK	293-294
REAR WIPER	295-296

S130 CONTENTS (Cont'd)

ACCESSORIES & OPTIONS (CONT'D)	185-322
SEAL ENCLOSURE KIT	297-298
SEAT	299-302
SEAT BELT	303-308
SOUND KIT	309-310
SOUND OPTION	311-312
SOUND REDUCTION HARDHAT	313-314
STROBE LIGHT	315-316
TIRES & RIMS	317-320
BULK ITEMS	321-322
NUMERICAL INDEX	323-363
NUMERICAL INDEX	323-363

GENERAL INFORMATION

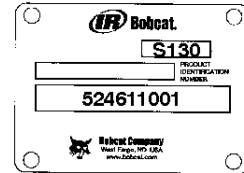
When using the machine serial number, use the complete number.

Some Serial Number breaks are not available at time of printing. These are listed as & Below or & Above.

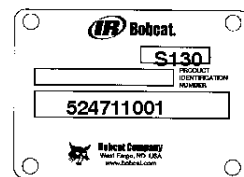
The number shown in the quantity column in this manual is the number of parts needed for the illustration on the page. For some parts an "x" will be shown in the quantity column. This "x" indicates that the quantity to be used is "As Needed".

When references L.H. and R.H. are used in this manual, it is done from the operator's seat in the forward operating position.

Some of the illustrations and information found in this parts manual were supplied to Bobcat by machine component companies.



Domestic



Export

ABBREVIATIONS & SYMBOLS

- SALES** = Order from Gwinner Sales Department
- NSS** = Not Serviced Separately
- NAP** = Not Available as Parts
- *** = Changed or Added Sections, Pages or Part Numbers

Disposition Code Definition (Found in the Remarks Column)

- [A]** = Use Up
- [B]** = Use Up on Other Application (See PNI)
- [C]** = File PDR Report With Bobcat Parts Sales
- [D]** = Part Number Error

Explications en francais	Grid Nb	3
Erklärungen auf deutsch	Grid Nb	4
Spiegazioni in italiano	Grid Nb	5
Explicaciones en espanol	Grid Nb	6
Verklaring in het Nederlands	Grid Nb	7

Buy Now



Our support email:

ebooklibonline@outlook.com