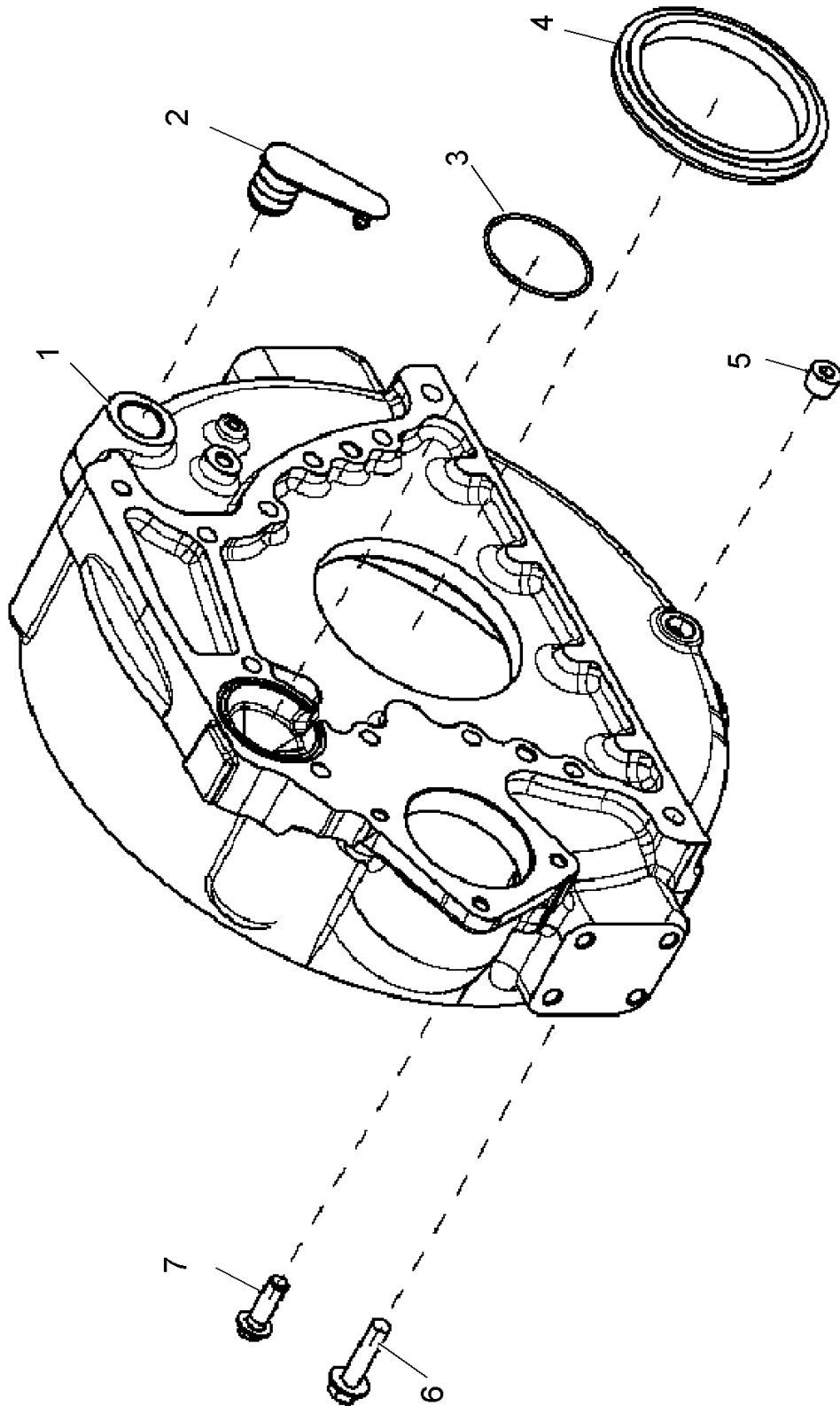


100 CRANKCASE 1)

Pos.	Part No.	Description	Dimension	Quantity	Conditions
1	60 0502 662 3	SCREW		2	
2	60 0502 662 2	PLATE		1	

1) machine no.

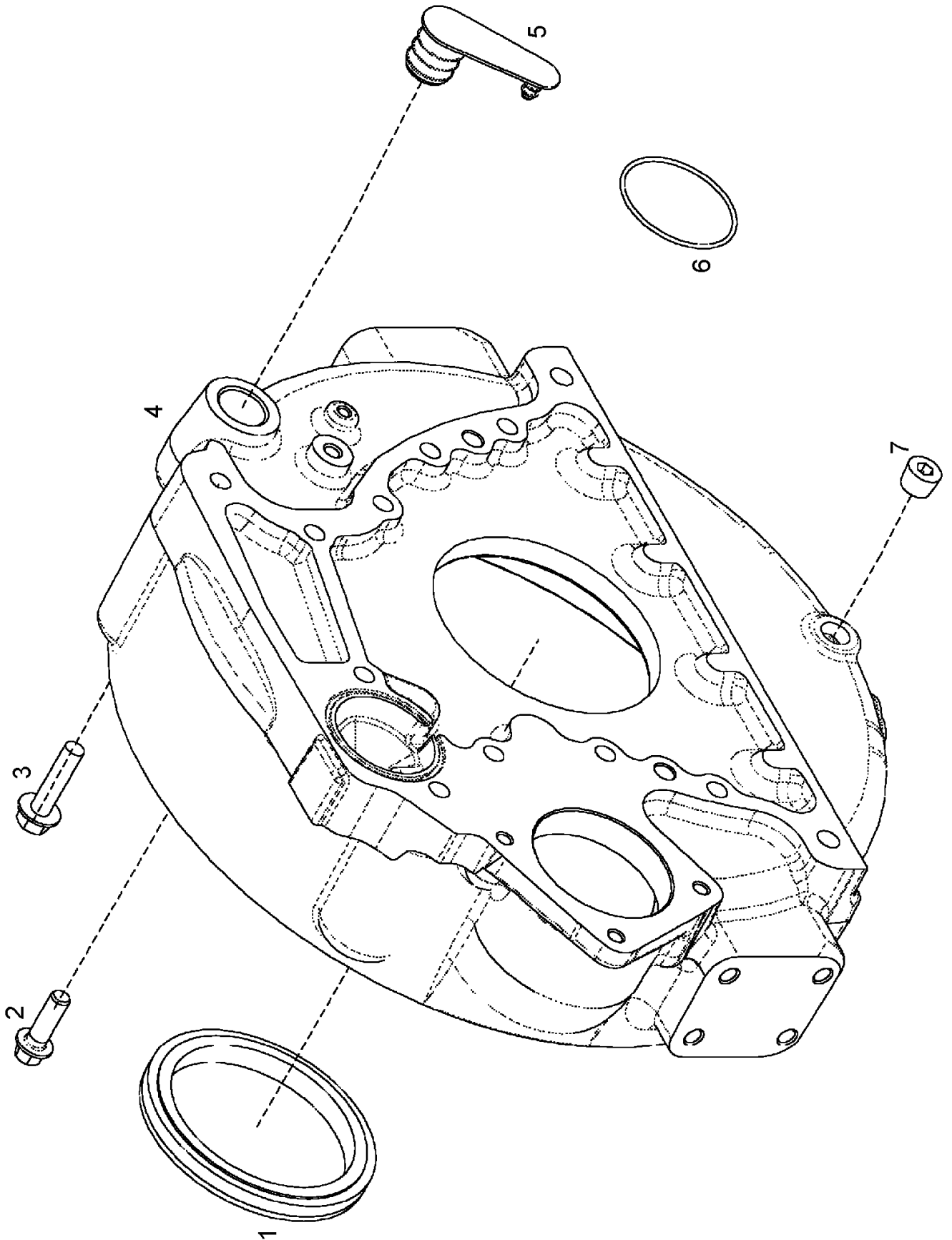
+ 0
+ K5700085
+ K5700086
+ K5700087
+ K5700088
+ K5700089
+ K5700090
+ K5700091
+ K5700092
+ K5700093



140 FLYWHEEL HOUSING 1)

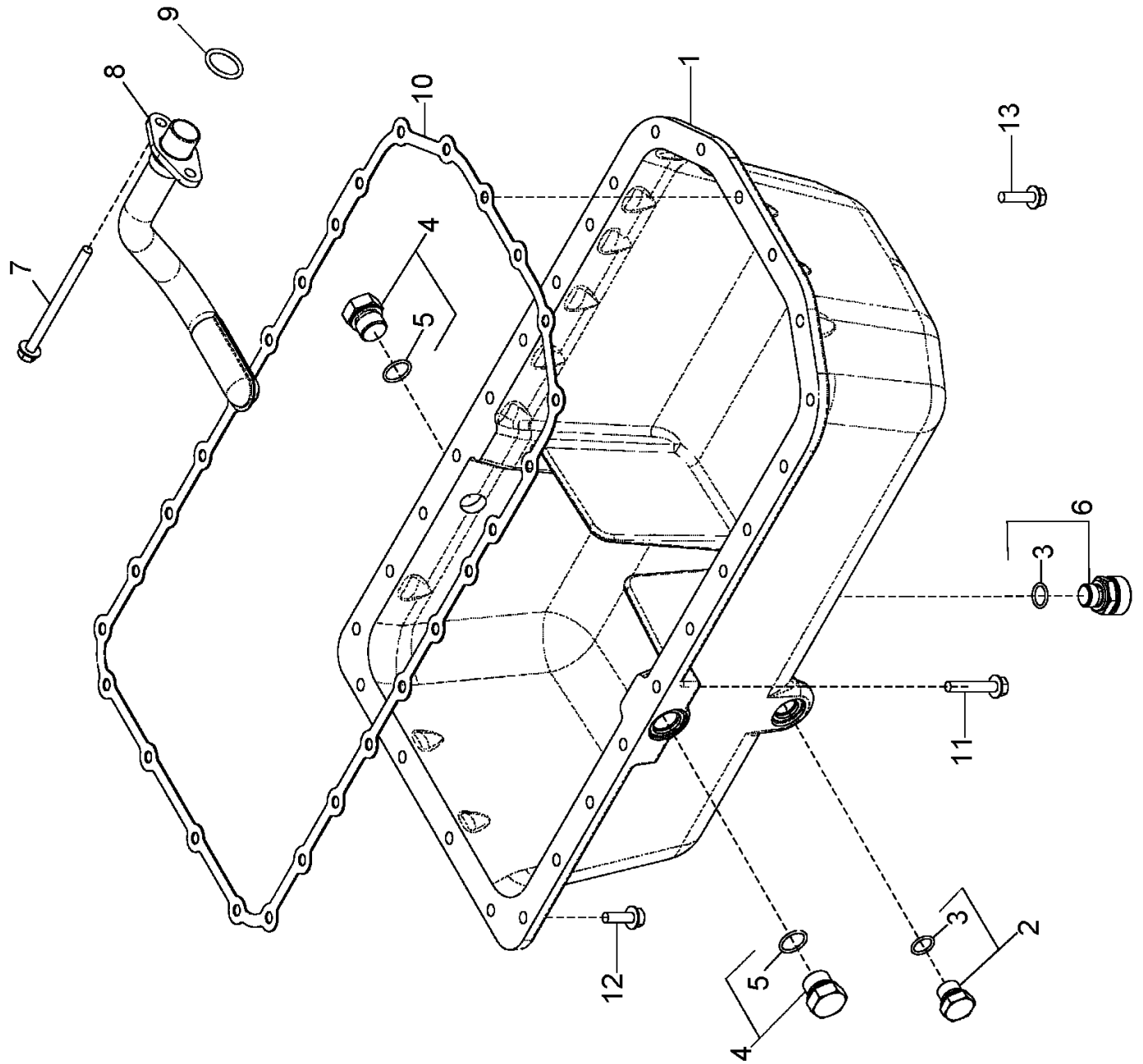
Pos.	Part No.	Description	Dimension	Quantity	Conditions
1	00 1953 173 0	SCHWUNGRADGEHAEUSE		1	
2	00 1953 174 0	PLUG		1	
3	00 1953 755 0	O-RING	69,25X2,616	1	
4	00 1145 360 0	LIP SEAL		1	
5	60 0501 321 0	PLUG		1	
6	00 1147 755 0	SCREW	M12X50	4	
7	60 0502 625 8	SCREW	12 X 1,75 -37 - M12X40	8	

1)	machine no.	+ 0
		+ K5700051
		+ K5700052
		+ K5700053
		+ K5700054
		+ K5700055
		+ K5700056
		+ K5700057
		+ K5700058
		+ K5700059



140 FLYWHEEL HOUSING 1)

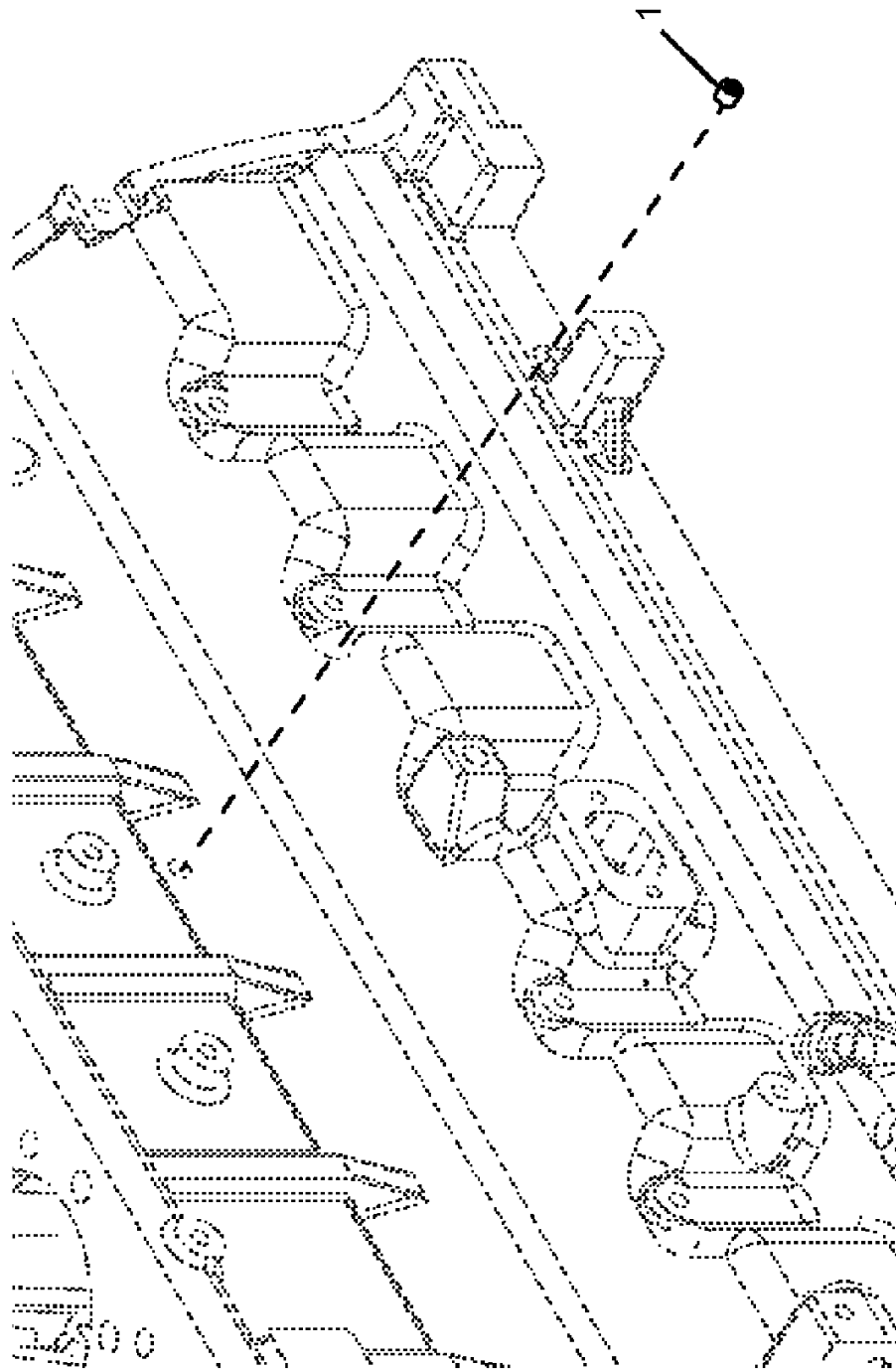
Pos.	Part No.	Description	Dimension	Quantity	Conditions
1	00 1145 360 0	LIP SEAL		1	
2	60 0502 625 8	SCREW	12 X 1,75 -37 - M12X40	8	
3	00 1147 755 0	SCREW	M12X50	4	
4	00 1953 173 0	SCHWUNGRADGEHAEUSE		1	
5	00 1953 174 0	PLUG		1	
6	00 1953 755 0	O-RING	69,25X2,616	1	
1)	machine no.		+ 0 + K5700114 + K5700115 FLYWHEEL HOUSING		



160 OIL PAN 1)

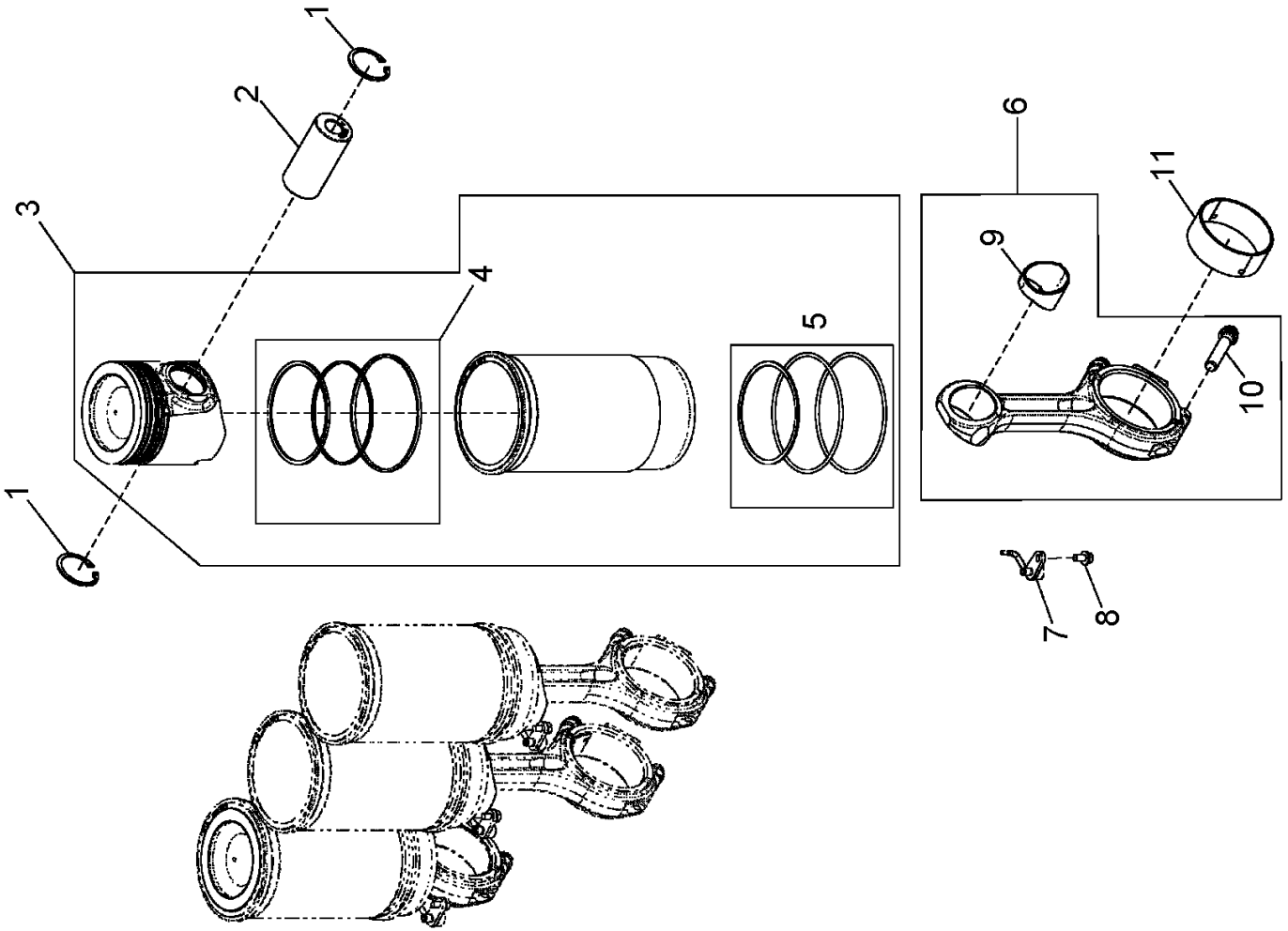
Pos.	Part No.	Description	Dimension	Quantity	Conditions
1	00 1953 175 0	OIL SUMP		1	
2	60 0502 160 7	PLUG	F-M18X1,5 ERS.D.7700054	1	
3	60 0502 160 8	O-RING	15,3X2,2-N	1	
4	60 0502 160 3	LOCK	M22X1,5	2	
5	60 0502 160 4	O-RING	19X2.4	1	
6	00 1952 306 0	DRAIN VALVE		1	
7	00 1146 050 0	SCREW		2	
8	00 1953 176 0	OELPUMPENEINLASS		1	
9	60 0501 334 6	O-RING		1	
10	00 1166 771 0	FLAT SEAL		1	
11	00 1146 995 0	SCREW	M08X45	4	
12	60 0502 145 6	SCREW	M8X25	18	
13	60 0502 625 4	SCREW	M8X30	6	

1)	machine no.	+ 0
		+ K5700051
		+ K5700052
		+ K5700053
		+ K5700054
		+ K5700055
		+ K5700056
		+ K5700057
		+ K5700058
		+ K5700059



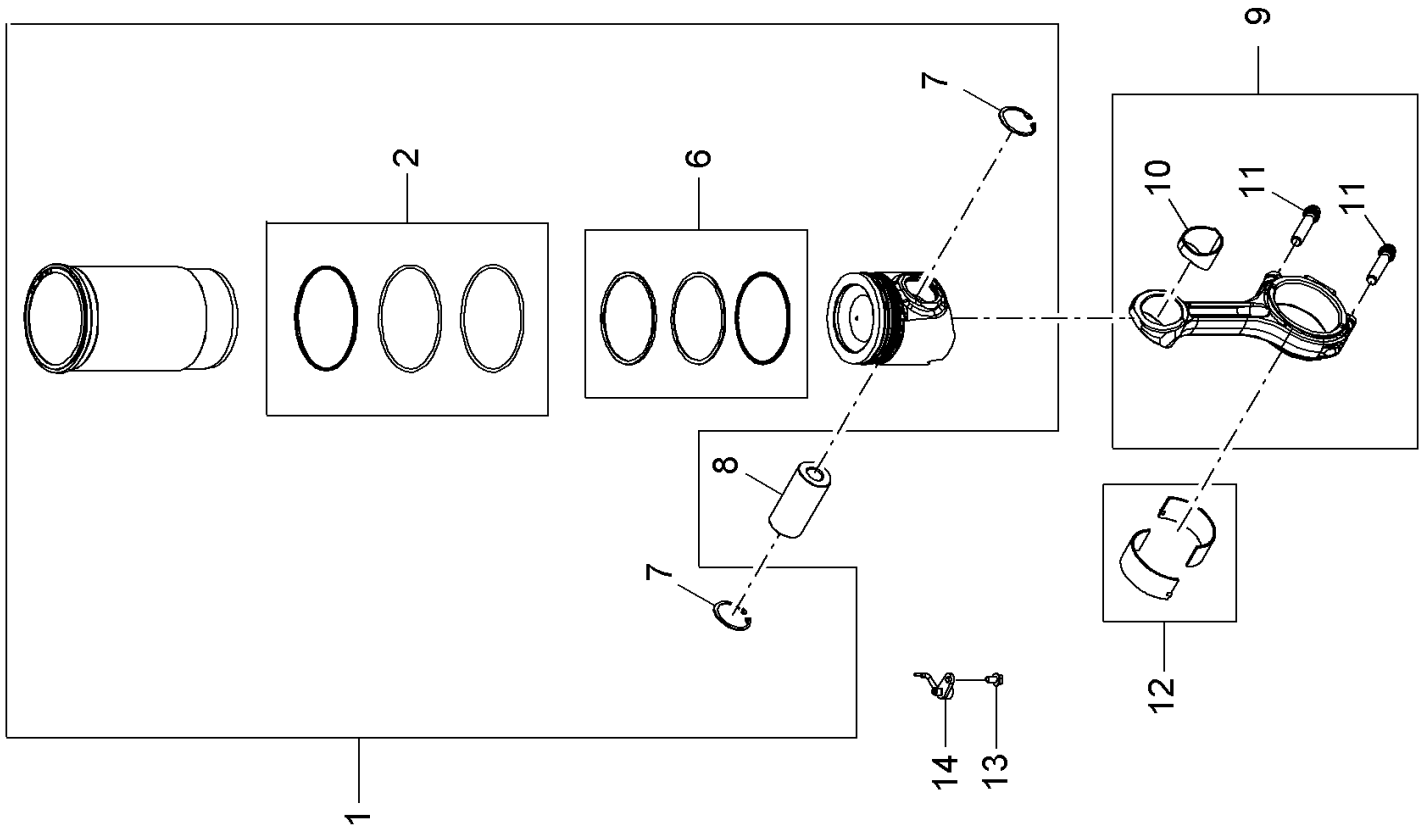
180 PLUGS 1)

Pos.	Part No.	Description	Dimension	Quantity	Conditions
1	00 1953 170 0	TUBE PLUG		1	
1)	machine no.				
				+ 0	
				+ K5700051	
				+ K5700052	
				+ K5700053	
				+ K5700054	
				+ K5700055	
				+ K5700056	
				+ K5700057	
				+ K5700058	
				+ K5700059	



100 CYLINDER LINER, PISTON 1)

Pos.	Part No.	Description	Dimension	Quantity	Conditions
1	60 0501 281 4	INNER CIRCLIP		8	
2	00 1167 613 0	SHAFT		4	
3	00 1166 970 0	PISTON-LINER		4	
4	00 1164 944 0	SET OF PISTON RINGS		4	
5	60 0501 280 9	SEALING RING SET		4	
6	60 0502 453 6	CONNECTING ROD		4	
7	00 1145 888 0	NOZZLE		4	
8	00 1145 889 0	SCREW		4	
9	60 0502 147 6	RING		4	
10	60 0502 453 7	SCREW	12 PTS M12 X 1,25 - 61	4	
11	60 0502 147 8	BEARING		4	
<hr/>					
1)	machine no.				
				+ 0	
				+ K5700051	
				+ K5700052	
				+ K5700053	
				+ K5700054	
				+ K5700055	
				+ K5700056	
				+ K5700057	
				+ K5700058	
				+ K5700059	



100 CYLINDER LINER, PISTON 1)

Pos.	Part No.	Description	Dimension	Quantity	Conditions
1	00 1166 970 0	PISTON-LINER		4	
2	00 1146 460 0	SEALING RING SET		4	
6	00 1164 944 0	SET OF PISTON RINGS		4	
7	60 0501 281 4	INNER CIRCLIP		8	
8	00 1167 613 0	SHAFT		4	
9	60 0502 453 6	CONNECTING ROD		4	
10	60 0502 147 6	RING		4	
11	60 0502 453 7	SCREW	12 PTS M12 X 1,25 - 61	8	
12	60 0502 147 8	BEARING		4	
13	00 1145 889 0	SCREW		4	
14	00 1145 888 0	NOZZLE		4	
1)	machine no.		+ 0 + K5700114 + K5700115 PISTON WITH MAIN ROD		

Thank you so much for reading.
Please click the “Buy Now!”
button below to download the
complete manual.



After you pay.

You can download the most
perfect and complete manual in
the world immediately.

Our support email:

ebooklibonline@outlook.com