

R6.165.7

Section: H0 - HYDRAULIC AND PNEUMATIC SYSTEM|

Ref: H0.07.14 (2)

8-WAY AUXILIARY DISTRIBUTOR LOAD SENSING

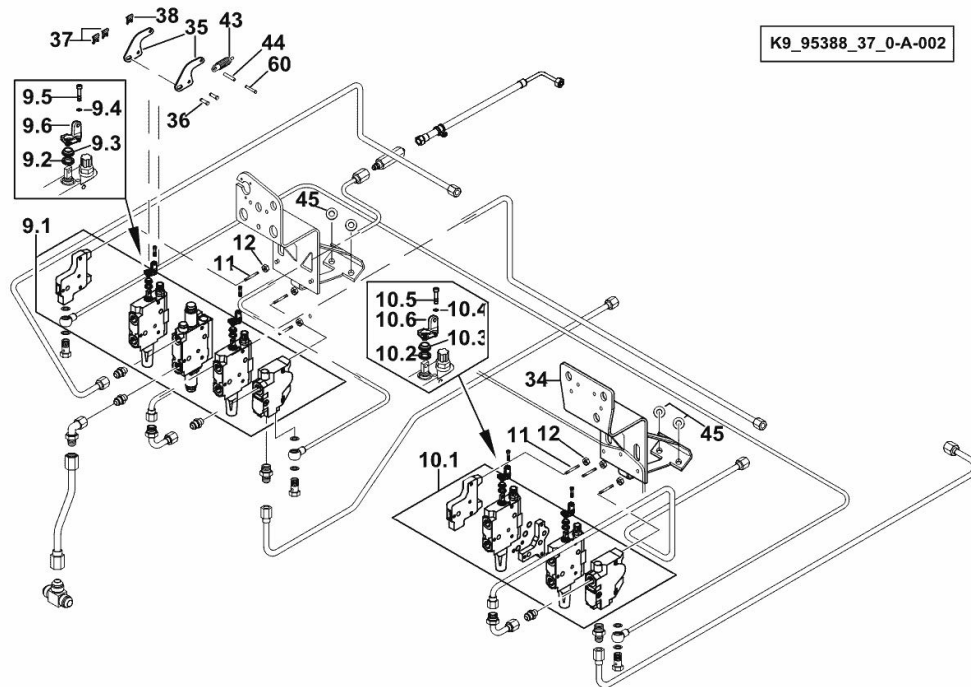


Fig.	P/n	QTY	Name
------	-----	-----	------

Notes:

WITHOUT SUSPENDED AXLE [R6.165.7] -> 2203 - 2287 <- - WITH SUSPENDED AXLE [R6.165.7] -> 2203 - 2287 <-

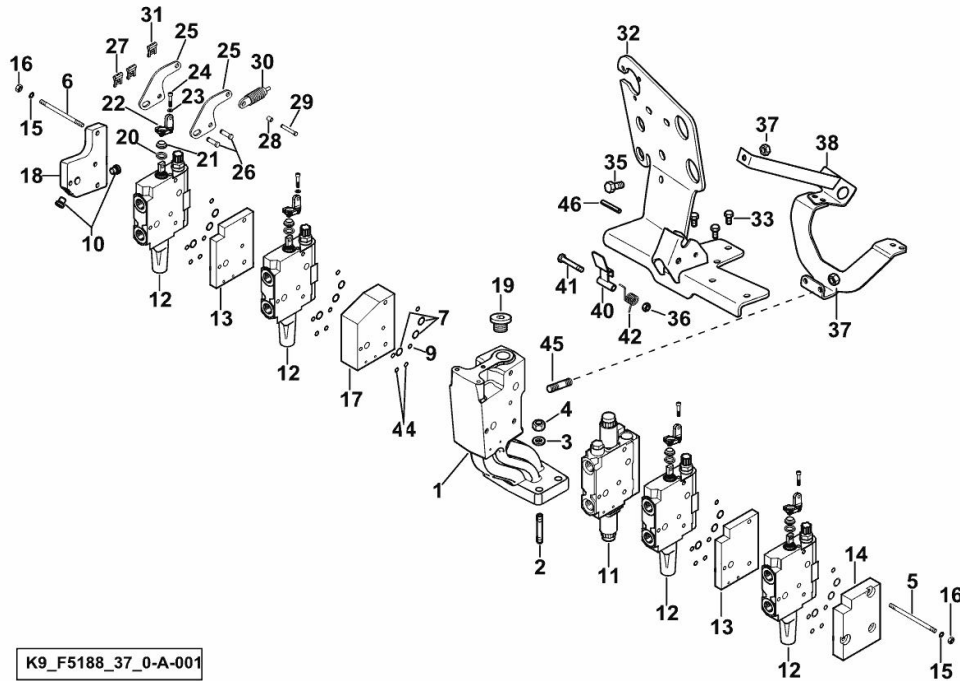
9.1	04450750	1	hydraulic control block ☞ 04450750 ☞ 04450750
9.2	0.011.9918.0	2	spacer 18.6 x 25 x 4.3
9.3	0.011.9929.0	2	ring
9.4	01102797	4	washer 6, d128
9.5	04429754	4	screw m 6 p.1.0 x 16
9.6	0.010.8533.0/10	2	support
10.1	04450751	1	hydraulic control block ☞ 04450751
10.2	0.011.9918.0	2	spacer 18.6 x 25 x 4.3
10.3	0.011.9929.0	2	ring
10.4	01102797	4	washer 6, d128
10.5	04429754	4	screw m 6 p.1.0 x 16
10.6	0.010.8533.0/10	2	support
11	01113391	6	small column m 8 x 25
12	01112824	6	nut m 8, d934
34	04438361.4	1	support
35	04438354	8	lever
36	04402646	8	pin 8x25
37	01176237	8	guard
38	01175725	4	clip 6, d128
43	04415468	4	stop
44	04415471	4	bushing
45	04418159	8	circlip
60	2.1699.497.2/20	4	pin

R6.165.7

Section: H0 - HYDRAULIC AND PNEUMATIC SYSTEM|

Ref: H0.07.16 (1)

8-WAY HYDRAULIC CONTROL VALVE LOAD SENSING



K9_F5188_37_0-A-001

Fig.	P/n	QTY	Name
------	-----	-----	------

Notes:

WITHOUT SUSPENDED AXLE [R6.165.7] -> 2288 - 2350 <- - WITH SUSPENDED AXLE [R6.165.7] -> 2288 - 2350 <-

1	04452288/10	1	support
2	2.0432.259.7	4	stud bolt m 12 p.1.75-1.25x35
3	2.1475.004.2	4	spring washer 12
4	2.1011.422.2	4	nut m 12 p.1.25
5	2.0433.031.7	3	stud bolt m 8 p.1x170
6	2.0433.032.7	3	stud bolt m 8x1x170
7	2.1531.048.0	15	oil seal 18.72x2.62
9	2.1589.471.0	15	shim 8.1x11.8x0.04
10	04454628	2	plug m 12 p.1.5
11	04428917.4	1	valve ☞ 04428917.4
12	2.3729.480.0	4	spool valve ☞ 2.3729.480.0
13	0.012.2329.0/10	2	plate 13 mm
14	04451514/20	1	tip
15	2.1475.102.2	6	washer 8.4 x 16
16	2.1012.305.7	6	nut m 8 p.1 x 8
17	04451057	1	plate 40 mm
18	04454512	1	plate
19	04451879	1	plug m 27 p.2
20	0.011.9918.0	4	spacer 18.6 x 25 x 4.3
21	0.011.9929.0	4	ring
22	0.010.8533.0/10	4	support
23	2.1474.007.2	8	washer 6, d128
24	2.0319.017.6	8	screw m 6 p.1.0 x 16
25	04438354	8	lever
26	04402646	8	pin 8x25
27	01176237	8	guard
28	04415469	4	clip
29	2.1699.497.2/20	4	pin
30	04415468	4	stop
31	01175725	4	clip 6, d128
32	0.017.6688.3	1	support
33	2.0114.207.2	3	screw m 8 p.1.25 x 20
35	2.0112.201.2	1	screw m 8 p.1.25 x 10
36	2.1121.005.2	1	nut m 8 p.1.25
37	2.1011.105.2	3	nut m 8 p.1.25
38	0.017.8974.3/10	1	support
40	04451512.4	1	lever
41	2.0112.220.2	1	screw m 8 p.1.25x55

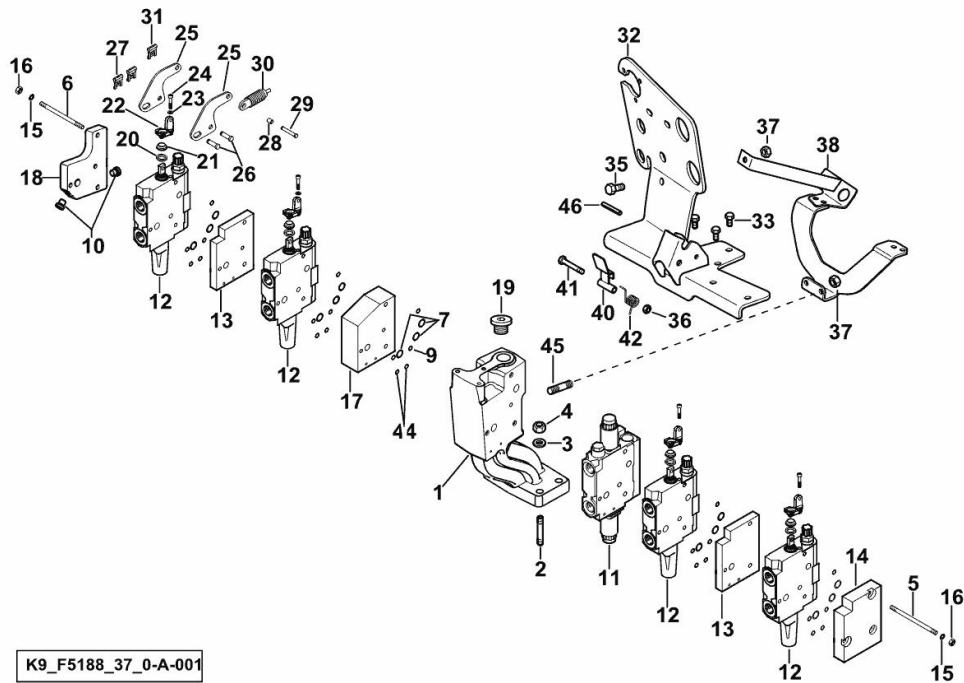
R6.165.7

Section: H0 - HYDRAULIC AND PNEUMATIC SYSTEM|

Ref: H0.07.16 (1)

8-WAY HYDRAULIC CONTROL VALVE LOAD SENSING

Fig.	P/n	QTY	Name
42	04315063	1	spring
44	2.1531.012.0	10	oil seal 6.75 x 1.78
45	2.0422.201.2	2	stud bolt M8X16
46	2.1630.616.0	1	roll pin 6x45



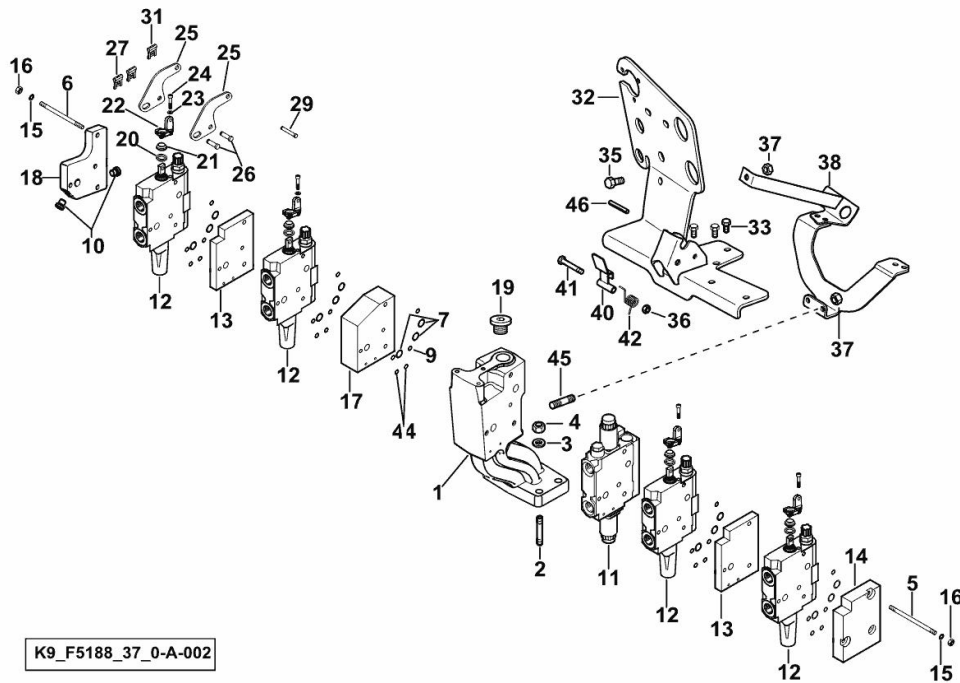
K9_F5188_37_0-A-001

R6.165.7

Section: H0 - HYDRAULIC AND PNEUMATIC SYSTEM|

Ref: H0.07.16 (2)

8-WAY HYDRAULIC CONTROL VALVE LOAD SENSING



K9_F5188_37_0-A-002

Fig.	P/n	QTY	Name
------	-----	-----	------

Notes:

WITHOUT SUSPENDED AXLE [R6.165.7] - WITH SUSPENDED AXLE [R6.165.7]

1	0.017.1367.0	1	support
2	2.0432.261.7	4	stud bolt m 12 p.1.75-1.25x40
3	2.1475.004.2	4	spring washer 12
4	2.1011.422.2	4	nut m 12 p.1.25
5	2.0433.031.7	3	stud bolt m 8 p.1x160
6	2.0433.032.7	3	stud bolt m 8x1x170
7	2.1531.048.0	15	oil seal 18.72x2.62
9	2.1589.471.0	15	shim 8.1x11.8x0.04
10	04454628	2	plug m 12 p.1.5
11	04428917.4	1	valve ☞ 04428917.4
12	2.3729.480.0	4	spool valve ☞ 2.3729.480.0
13	0.012.2329.0/10	2	plate 13 mm
14	04451514/20	1	tip
15	2.1475.102.2	6	washer 8.4 x 16
16	2.1012.305.7	6	nut m 8 p.1 x 8
17	04451057	1	plate 40 mm
18	04454512	1	plate
19	04451879	1	plug m 27 p.2
20	0.011.9918.0	4	spacer 18.6 x 25 x 4.3
21	0.011.9929.0	4	ring
22	0.010.8533.0/10	4	support
23	2.1474.007.2	8	washer 6, d128
24	2.0319.017.6	8	screw m 6 p.1.0 x 16
25	04438354	8	lever
26	04402646	8	pin 8x25
27	01176237	8	guard
29	2.1699.497.2/20	4	pin
31	01175725	4	clip 6, d128
32	0.017.6688.3	1	support
33	2.0114.207.2	3	screw m 8 p.1.25 x 20
35	2.0112.201.2	1	screw m 8 p.1.25 x 10
36	2.1121.005.2	1	nut m 8 p.1.25
37	2.1011.105.2	3	nut m 8 p.1.25
38	0.017.8974.3/10	1	support
40	04451512.4	1	lever
41	2.0112.220.2	1	screw m 8 p.1.25x55
42	04315063	1	spring
44	2.1531.012.0	10	oil seal 6.75 x 1.78
45	2.0422.201.2	2	stud bolt M8X16

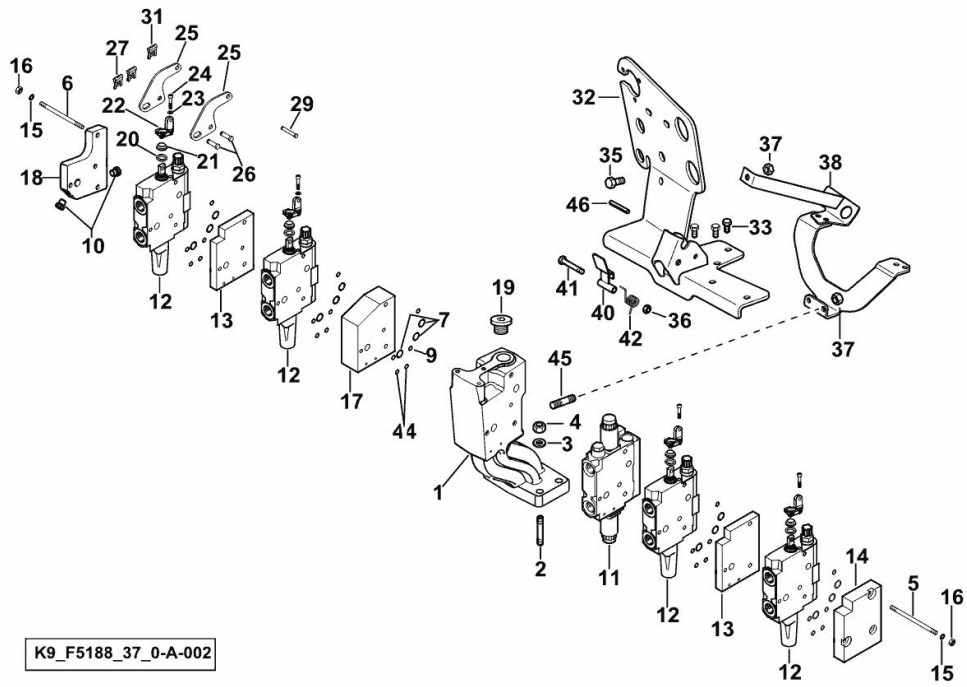
R6.165.7

Section: H0 - HYDRAULIC AND PNEUMATIC SYSTEM|

Ref: H0.07.16 (2)

8-WAY HYDRAULIC CONTROL VALVE LOAD SENSING

Fig.	P/n	QTY	Name
46	2.1630.616.0	1	roll pin 6x45



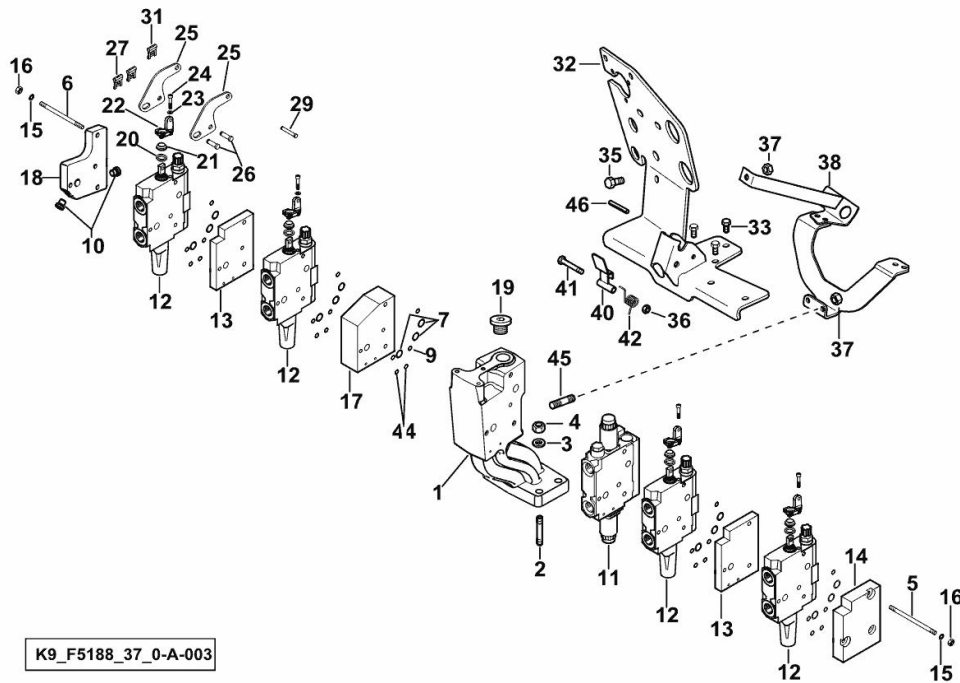
K9_F5188_37_0-A-002

R6.165.7

Section: H0 - HYDRAULIC AND PNEUMATIC SYSTEM|

Ref: H0.07.16 (3)

8-WAY HYDRAULIC CONTROL VALVE LOAD SENSING



K9_F5188_37_0-A-003

Fig.	P/n	QTY	Name
------	-----	-----	------

Notes:

WITHOUT SUSPENDED AXLE [R6.165.7] - WITH SUSPENDED AXLE [R6.165.7]

1	0.017.1367.0	1	support
2	2.0432.261.7	4	stud bolt m 12 p.1.75-1.25x40
3	2.1475.004.2	4	spring washer 12
4	2.1011.422.2	4	nut m 12 p.1.25
5	2.0433.031.7	3	stud bolt m 8 p.1x160
6	2.0433.032.7	3	stud bolt m 8x1x170
7	2.1531.048.0	15	oil seal 18.72x2.62
9	2.1589.471.0	15	shim 8.1x11.8x0.04
10	2.3139.024.2	2	plug m 12 p.1.5
11	04428917.4	1	valve ☞ 04428917.4
12	2.3729.480.0	4	spool valve ☞ 2.3729.480.0
13	0.012.2329.0/10	2	plate 13 mm
14	0.018.7577.0	1	tip
15	2.1475.102.2	6	washer 8.4 x 16
16	2.1012.305.7	6	nut m 8 p.1 x 8
17	04451057	1	plate 40 mm
18	04454512	1	plate
19	04451879	1	plug m 27 p.2
20	0.011.9918.0	4	spacer 18.6 x 25 x 4.3
21	0.011.9929.0	4	ring
22	0.010.8533.0/10	4	support
23	2.1474.007.2	8	washer 6, d128
24	2.0319.017.6	8	screw m 6 p.1.0 x 16
25	04438354/10	8	lever
26	04402646	8	pin 8x25
27	01176237	8	guard
29	2.1699.497.2/20	4	pin
31	01175725	4	clip 6, d128
32	0.017.6688.3/20	1	support
33	2.0114.207.2	3	screw m 8 p.1.25 x 20
35	2.0112.205.2	1	screw m 8 p.1.25 x 16
36	2.1121.005.2	1	nut m 8 p.1.25
37	2.1011.105.2	3	nut m 8 p.1.25
38	0.017.8974.3/10	1	support
40	04451512.4	1	lever
41	2.0112.220.2	1	screw m 8 p.1.25x55
42	04315063	1	spring
44	2.1531.012.0	10	oil seal 6.75 x 1.78
45	2.0422.201.2	2	stud bolt M8X16

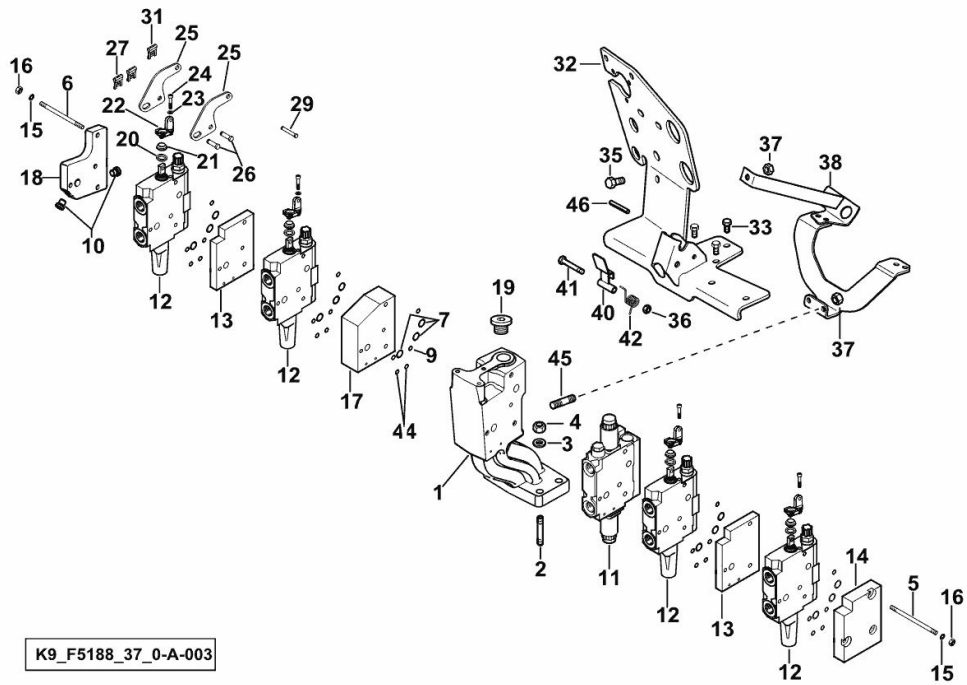
R6.165.7

Section: H0 - HYDRAULIC AND PNEUMATIC SYSTEM|

Ref: H0.07.16 (3)

8-WAY HYDRAULIC CONTROL VALVE LOAD SENSING

Fig.	P/n	QTY	Name
46	2.1630.616.0	1	roll pin 6x45



K9_F5188_37_0-A-003

Buy Now



Our support email:

ebooklibonline@outlook.com