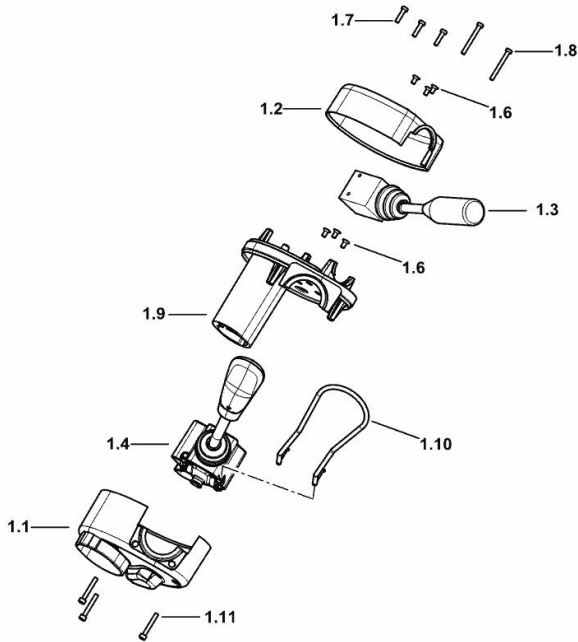


STEERING COLUMN SWITCH UNIT - REVERSING GEAR UNIT CONTROL

Fig.	P/n	QTY	Name
------	-----	-----	------

Notes:
[AGROTRON 7220 ST]

1.1	0.019.0502.2/10	1	cover
1.2	0.019.0501.2/20	1	cover
1.3	0.014.0007.4/20	1	control
1.4	0.019.7293.4	1	control
1.6	2.0342.101.3	6	screw m 5 x 12
1.7	04426679	3	screw m 5 x 20
1.8	04426681	2	screw m 5 x 45
1.9	0.021.7696.0D	1	support
1.10	0.019.7375.4	1	tube
1.11	2.0312.012.2	3	screw m 5 x 35



K9_V9184_05_0-A-002

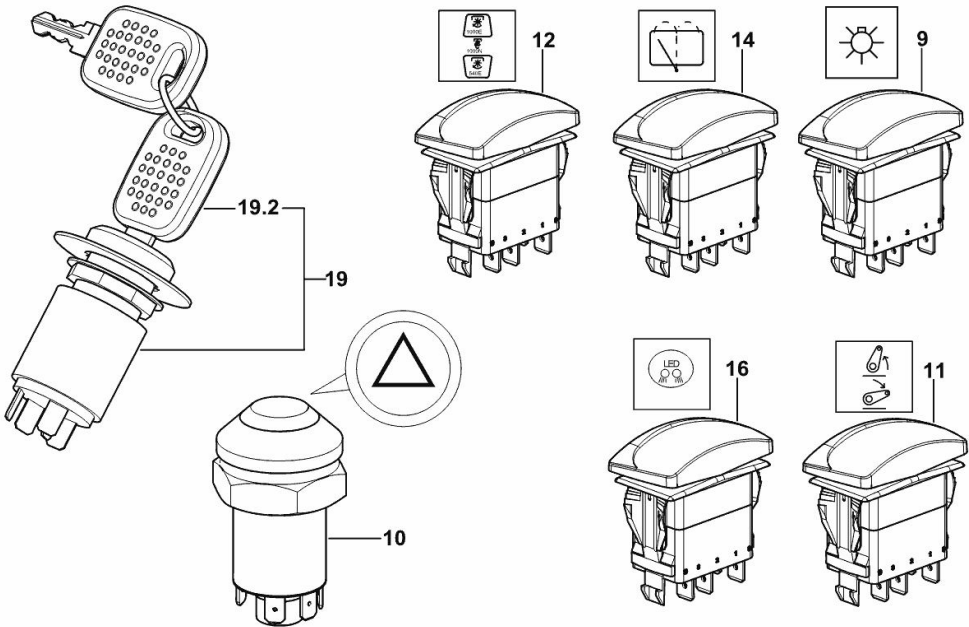
Section: L0 - ELECTRIC AL SYSTEM
SWITCHES / IGNITION BLOCK

Ref: L0.07.2 (1)

Fig.	P/n	QTY	Name
------	-----	-----	------

Notes:
[AGROTRON 7220 ST]

9	2.7659.376.0	1	switch
10	2.7659.411.0	1	push-button
11	2.7659.379.0	1	switch
12	2.7659.380.0	1	switch
14	2.7659.382.0	1	switch
16	2.7659.471.0	1	switch
19	0.015.0485.4	1	start device
19.2	2.7439.023.0	2	key



K9_AB384_00_0-A-001

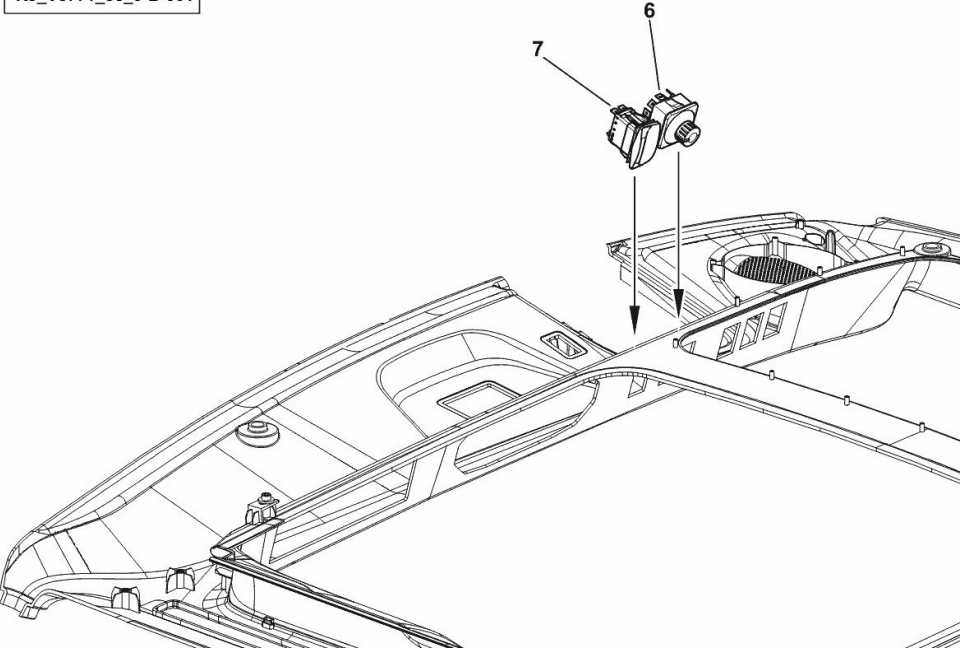
ELECTRIC CONTROLS FOR REAR-VIEW MIRROR - DX/RH/RE

Fig.	P/n	QTY	Name
------	-----	-----	------

Notes:
[AGROTRON 7220 ST]

6	0.015.8629.4	1	control
7	2.7659.381.0	1	switch

K9_V8771_36_0-B-001



ELECTRIC CONTROLS FOR REAR-VIEW MIRROR - DX/RH/RE

Fig.	P/n	QTY	Name
------	-----	-----	------

Notes:
[AGROTRON 7220 ST]

6	0.015.8629.4	1	control
7	2.7659.381.0	1	switch

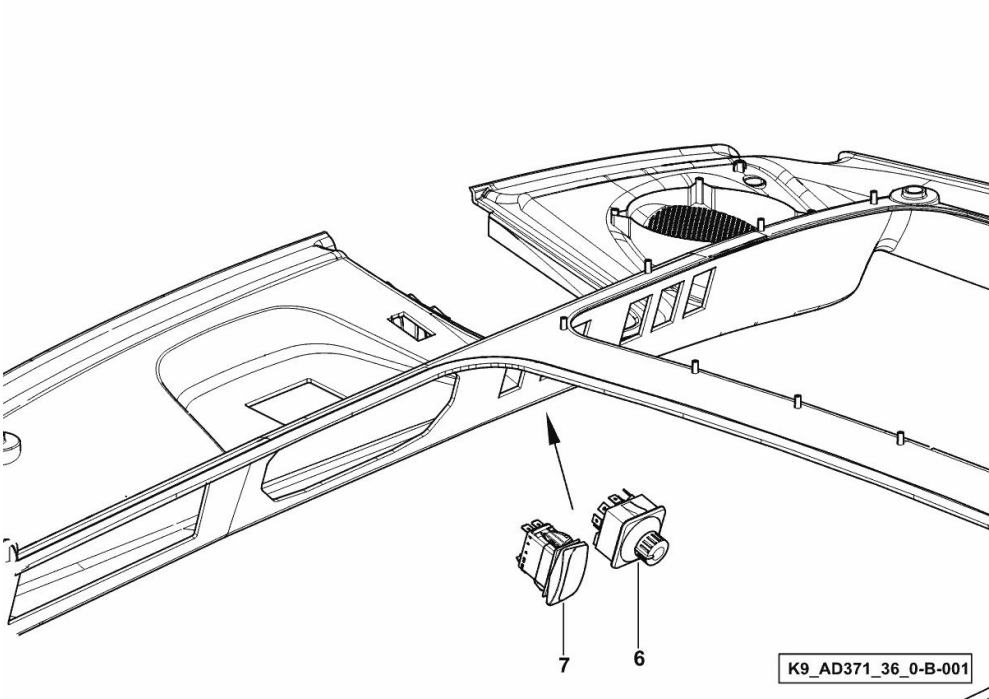
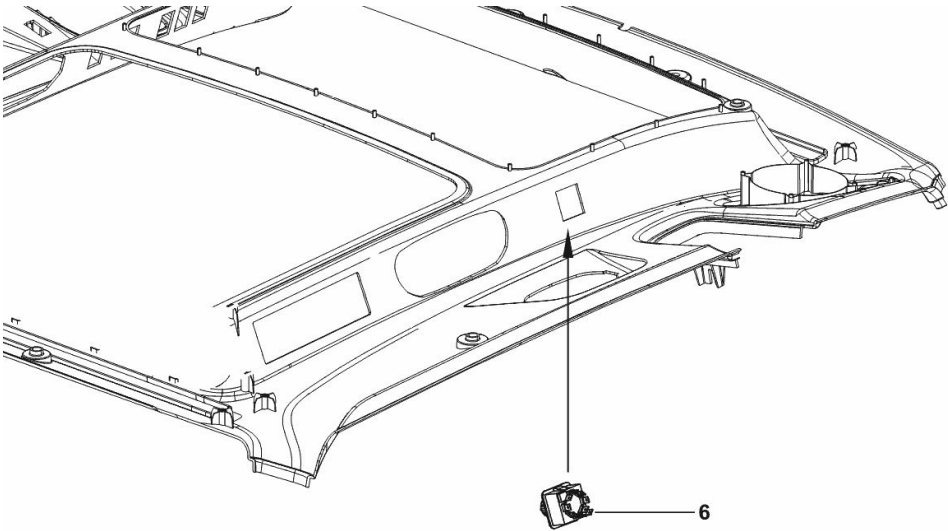


Fig.	P/n	QTY	Name
------	-----	-----	------

Notes:
[AGROTRON 7220 ST]

6	0.015.8629.4	1	control
---	--------------	---	---------



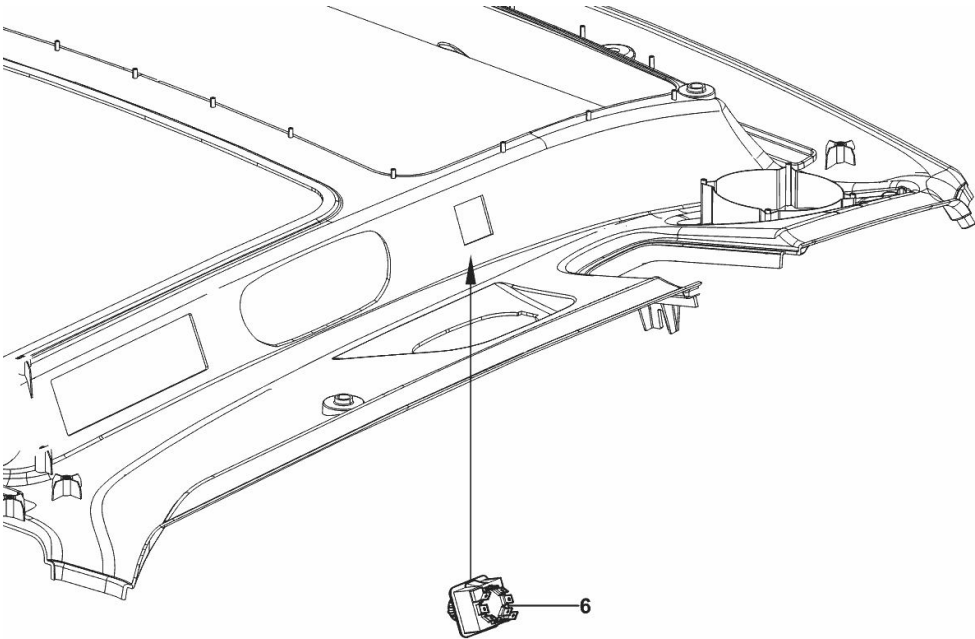
K9_V8771_37_0-B-001

ELECTRIC CONTROLS FOR REAR-VIEW MIRROR - SX/LH/LI

Fig.	P/n	QTY	Name
------	-----	-----	------

Notes:
[AGROTRON 7220 ST]

6	0.015.8629.4	1	control
---	--------------	---	---------



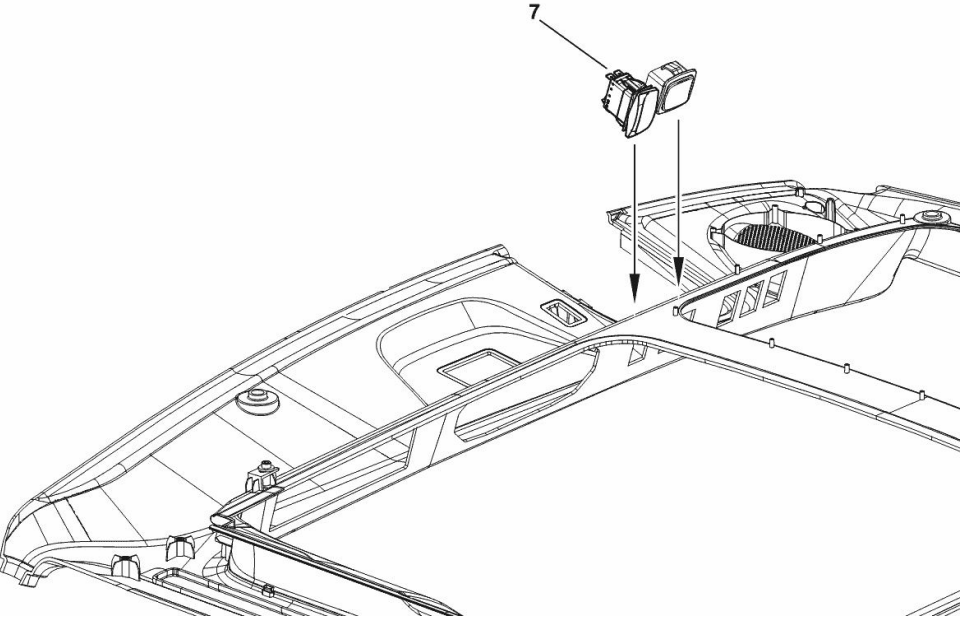
K9_AD371_37_0-B-001

Fig.	P/n	QTY	Name
------	-----	-----	------

Notes:
[AGROTRON 7220 ST] 50001 <-

7	2.7659.381.0	1	switch
---	--------------	---	--------

K9_V8771_34_0-B-001





Our support email:

ebooklibonline@outlook.com