

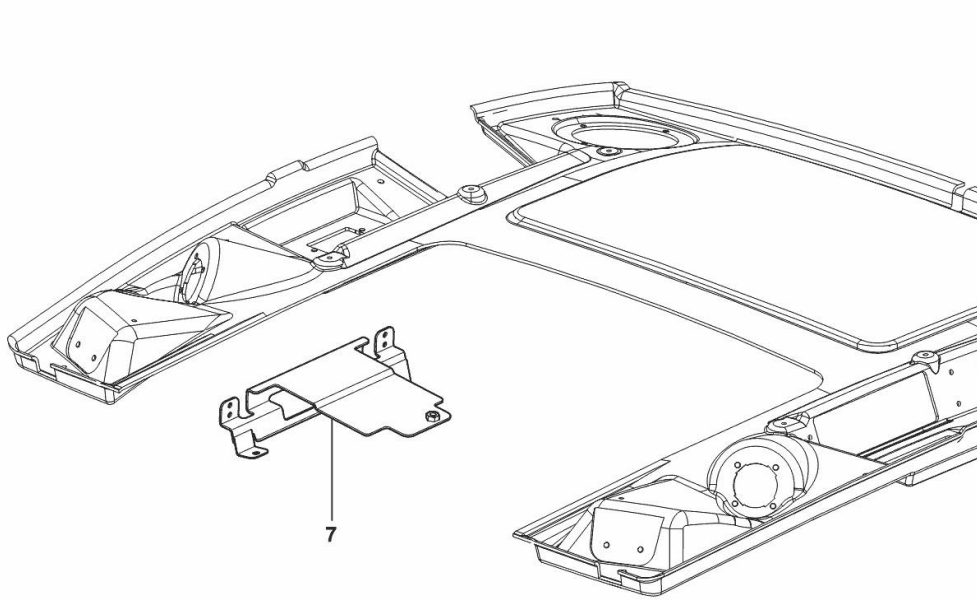
BRACKET FIXING AMPLIFIER

Fig.	P/n	QTY	Name
------	-----	-----	------

Notes:

[Agrotron X710 ->WSXL900400LD10001] -> 10051

7	0.017.0279.2/10	1	support
---	-----------------	---	---------



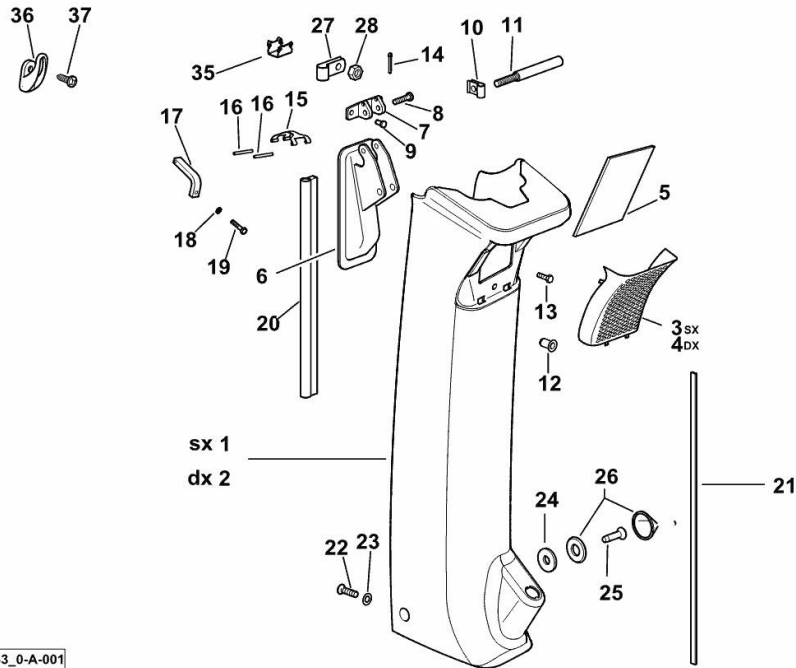
K9_L0284_13_0-A-001

INTERIOR TRIM

Fig.	P/n	QTY	Name
------	-----	-----	------

Notes:

[Agrotron X710 ->WSXL900400LD10001] 10011 <-



1	0.010.9924.0/20	1	lining sx/lh/li
2	0.010.9925.0/20	1	lining dx/rh/re
3	04429279	1	grille sx/lh/li
4	04429280	1	grille dx/rh/re
5	0.011.3775.0	2	filter
6	0.013.4932.0	2	switch sx/lh/li
7	0.010.9689.0/10	2	support
8	2.1671.111.2	2	pin 6x38
9	2.1856.307.0	4	rivet 4.8x12
10	2.1680.004.2	2	clip Ø 8
11	2.1699.523.2	2	pin
12	2.1142.010.2	2	insert m 6
13	2.0112.005.2	4	screw m 6 p.1 x 16
14	2.1690.106.2	2	split pin 1.6x16
15	0.011.7132.0	2	spring
16	2.1631.317.2	4	pin Ø 4x40
17	0.011.7034.0/10	2	bracket
18	2.1310.002.2	2	flat washer 6.4x12.5
19	2.0112.005.2	2	screw m 6 p.1 x 16
20	0.011.4085.0/20	2	gasket mm 390
21	0.011.0057.0/10	2	gasket
22	2.0350.405.3	2	screw m 4.2 x 16
23	2.1310.001.2	2	flat washer 5.3 x 10
24	2.1312.003.2	12	washer 6
25	2.0351.556.3	4	screw 4.8x19
26	04419538	12	cap
27	2.6859.065.2	1	clamp Ø 18
28	2.1121.105.2	1	nut m 8 x 1
35	04418149/10	2	clip
36	0.007.6732.0	1	coat hanger
37	2.0350.255.3	2	screw m 3.5 x 16 -AB-

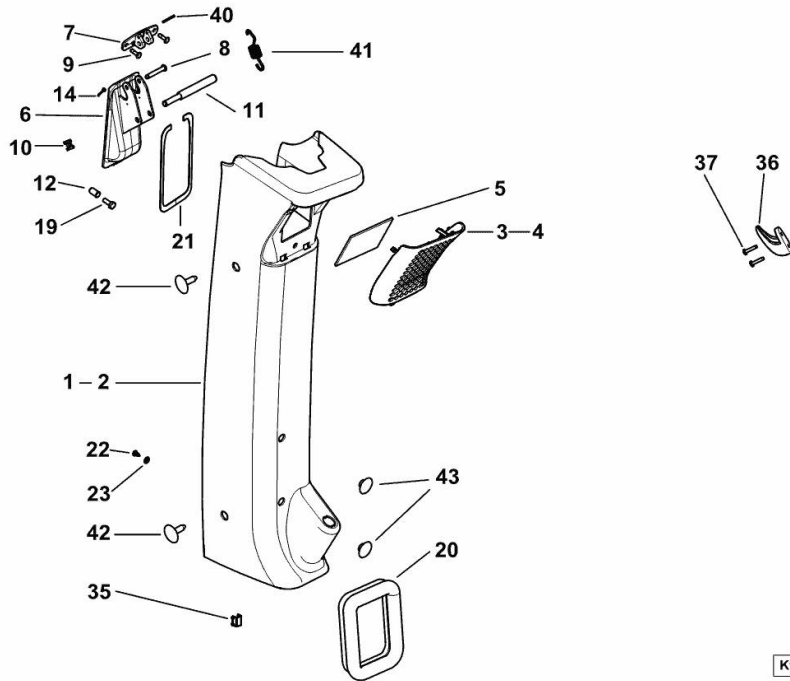
K9_J3371_33_0-A-001

INTERIOR TRIM

Fig.	P/n	QTY	Name
------	-----	-----	------

Notes:

[Agrotron X710 ->WSXL900400LD10001]-> 10012 - 10039 <-



1	0.010.9924.0/30	1	lining sx/lh/li
2	0.010.9925.0/30	1	lining dx/rh/re
3	04429279	1	grille sx/lh/li
4	04429280	1	grille dx/rh/re
5	0.011.3775.0	2	filter
6	0.013.4932.0	2	switch sx/lh/li
7	0.010.9689.0/10	2	support
8	2.1671.111.2	2	pin 6x38
9	2.1856.307.0	4	rivet 4.8x12
10	2.1680.004.2	2	clip Ø 8
11	2.1699.523.2	2	pin
12	2.1142.010.2	2	insert m 6
14	2.1690.106.2	2	split pin 1.6x16
19	2.0112.005.2	2	screw m 6 p.1 x 16
20	0.011.4085.0/20	2	gasket mm 390
21	0.011.0057.0/10	2	gasket
22	2.0350.405.3	2	screw m 4.2 x 16
23	2.1310.001.2	2	flat washer 5.3 x 10
35	04418149/10	2	clip
36	0.007.6732.0	1	coat hanger
37	2.0350.255.3	2	screw m 3.5 x 16 -AB- (10034 <-)
37	2.0350.253.3	2	screw m 3.5 x 9.5 AB (-> 10035)
40	2.1630.111.0	2	roll pin 2.5x24
41	2.4049.216.2/10	2	spring
42	01175900	4	plug
43	04425759	2	cap

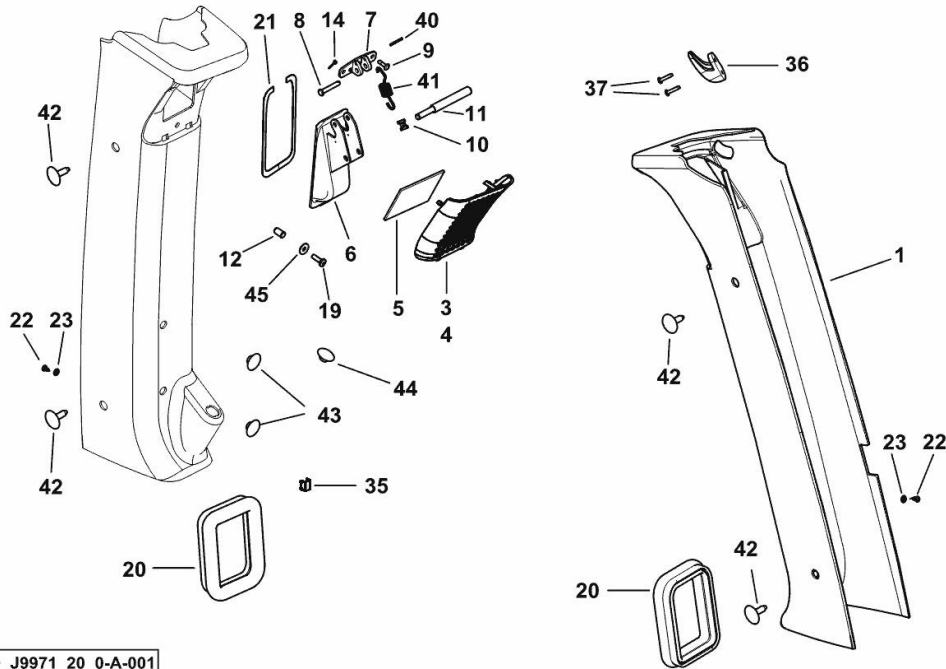
FIXINGS FOR CAB INTERIOR TRIM

Fig.	P/n	QTY	Name
------	-----	-----	------

Notes:

[Agrotron X710 ->WSXL900400LD10001]-> 10040

1	0.016.4301.0/20	1	lining sx/lh/li
3	0.016.4307.0	1	grille sx/lh/li
4	0.016.4305.0	1	grille dx/rh/re
5	0.011.3775.0	2	filter
6	0.013.4932.0	2	switch sx/lh/li
7	0.010.9689.0/10	2	support
8	2.1671.111.2	2	pin 6x38
9	2.1856.307.0	4	rivet 4.8x12
10	2.1680.004.2	2	clip Ø 8
11	2.1699.523.2	2	pin
12	2.1142.010.2	2	insert m 6
14	2.1690.106.2	2	split pin 1.6x16
19	2.0330.407.2	2	screw m 6 p.1 x 20
20	0.011.4085.0/20	2	gasket mm 390
21	0.011.0057.0/10	2	gasket
22	2.0350.405.3	2	screw m 4.2 x 16
23	2.1310.001.2	2	flat washer 5.3 x 10
35	04418149/10	2	clip
36	0.007.6732.0	1	coat hanger
37	2.0350.253.3	2	screw m 3.5 x 9.5 AB
40	2.1630.111.0	2	roll pin 2.5x24
41	2.4049.216.2/10	2	spring
42	01175900	4	plug
43	04425759	2	cap
44	04413366	1	plug 20.6
45	2.1312.003.2	2	washer 6



9_J9971_20_0-A-001

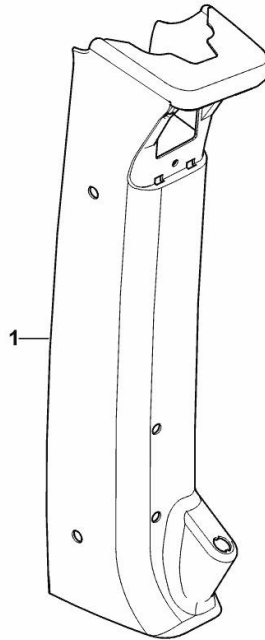
INTERNAL CAB LININGS - DX/RH/RE

Fig.	P/n	QTY	Name
------	-----	-----	------

Notes:

[Agrotron X710 ->WSXL900400LD10001] -> 10037

1	0.016.4300.0/20	1	lining dx/rh/re
---	-----------------	---	-----------------



K9_R5271_20_0-A-001

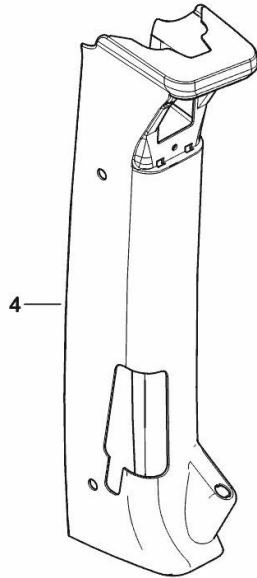
INTERNAL CAB LININGS DX/RH/RE

Fig.	P/n	QTY	Name
------	-----	-----	------

Notes:

- FOR TYPES W/ I-MONITOR [Agrotron X710 ->WSXL900400LD10001] -> 10044

4	0.017.9803.0/20	1	lining dx/rh/re
---	-----------------	---	-----------------



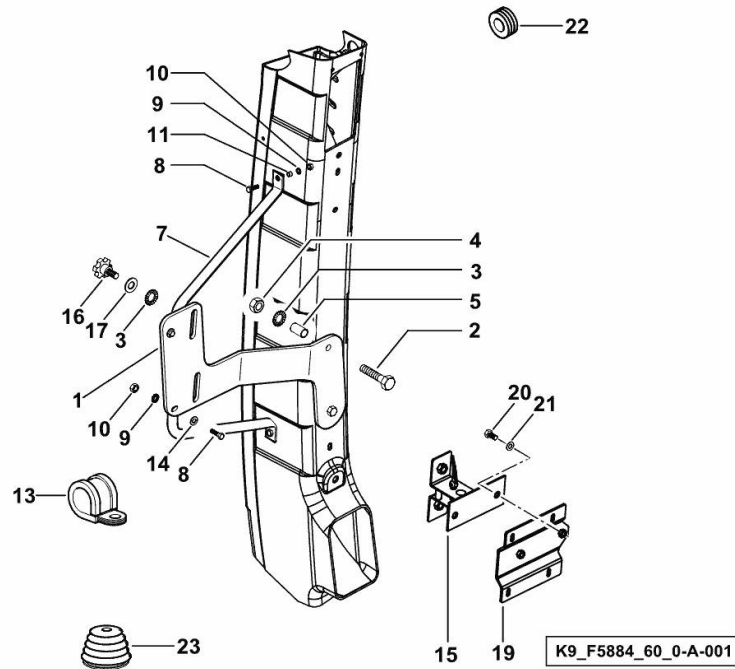
K9_R5171_50_0-D-001

SUPPORT FOR MONITOR

Fig.	P/n	QTY	Name
------	-----	-----	------

Notes:

- FOR TYPES W/ I-MONITOR [Agrotron X710 ->WSXL900400LD10001]



1	04451577	1	support
2	2.0112.320.2	2	screw m 10 p.1.5 x 55
3	2.1470.006.2	4	lock washer 10
4	2.1011.106.2	2	nut m 10 p.1.5
5	04451580	2	spacer 10x12x36
7	04451576	1	support
8	2.0112.007.2	4	screw m 6 p.1 x 20
9	2.1470.002.2	4	lock washer 6
10	2.1011.103.2	2	nut m 6 p.1
11	04451581	2	spacer 9x12x9
13	2.6839.066.0/10	1	clamp 16
14	2.1310.002.2	2	flat washer 6.4x12.5
15	04451568	1	support
16	04422689	2	knob
17	2.1310.006.2	2	flat washer 10.5x21
19	04454424	1	bracket
20	2.0112.205.2	2	screw m 8 p.1.25 x 16
21	2.1310.004.2	2	flat washer 8.4x17
22	2.6569.007.0	2	ring
23	06261119	1	bellows

Buy Now



Our support email:

ebooklibonline@outlook.com