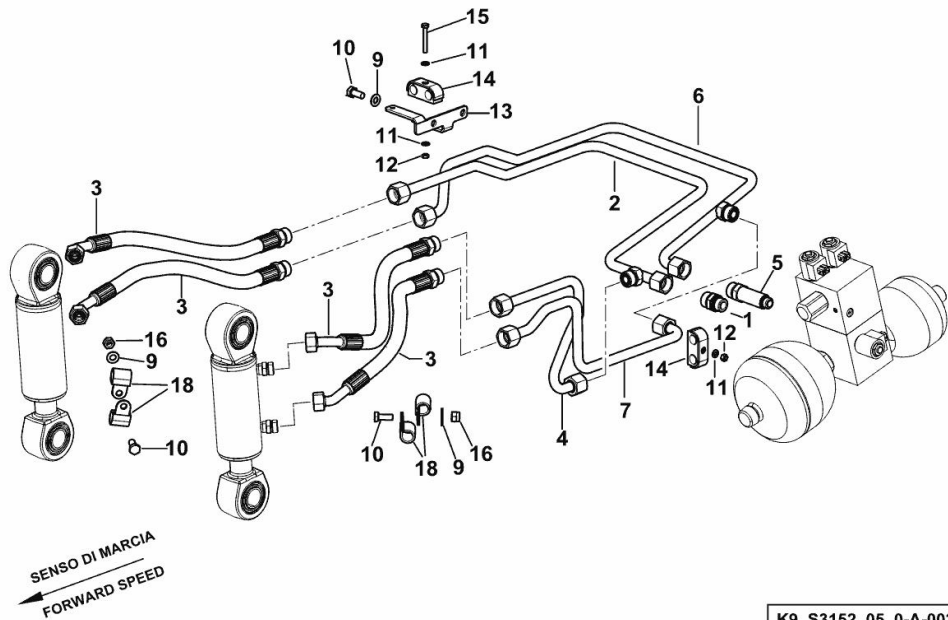


R6.125 DCR 4V VRT

Section: H0 - HYDRAULIC AND PNEUMATIC SYSTEM]
HYDRAULIC SYSTEM FOR SUSPENDED AXLE

Ref: H0.04.0 (2)



K9_S3152_05_0-A-002

Fig.	P/n	QTY	Name
------	-----	-----	------

Notes:

[R6.125 DCR 4V VRT]

1	2.3272.012.0	1	pipe fitting m 22 p.1.5
2	0.018.6221.3	1	tube dx/rh/re
3	0.018.1557.3/10	4	tube
4	0.018.6223.3	1	tube sx/lh/li
5	2.3249.417.2	1	pipe fitting
6	0.018.6222.3	1	tube dx/rh/re
7	0.018.6224.3	1	tube sx/lh/li
9	2.1310.006.2	4	flat washer 10.5x21
10	2.0112.308.2	4	screw m 10 p.1.5x22
11	2.1310.002.2	3	flat washer 6.4x12.5
12	2.1011.103.2	2	nut m 6 p.1
13	0.018.1771.0	1	bracket
14	2.3320.316.0	2	terminal Ø 16/16 -B-
15	2.0112.017.2	1	screw m 6 p.1x45
16	2.1011.106.2	2	nut m 10 p.1.5
18	2.6839.039.2	4	clamp Ø 20/25

R6.125 DCR 4V VRT

Section: H0 - HYDRAULIC AND PNEUMATIC SYSTEM|
HYDRAULIC SYSTEM FOR SUSPENDED AXLE

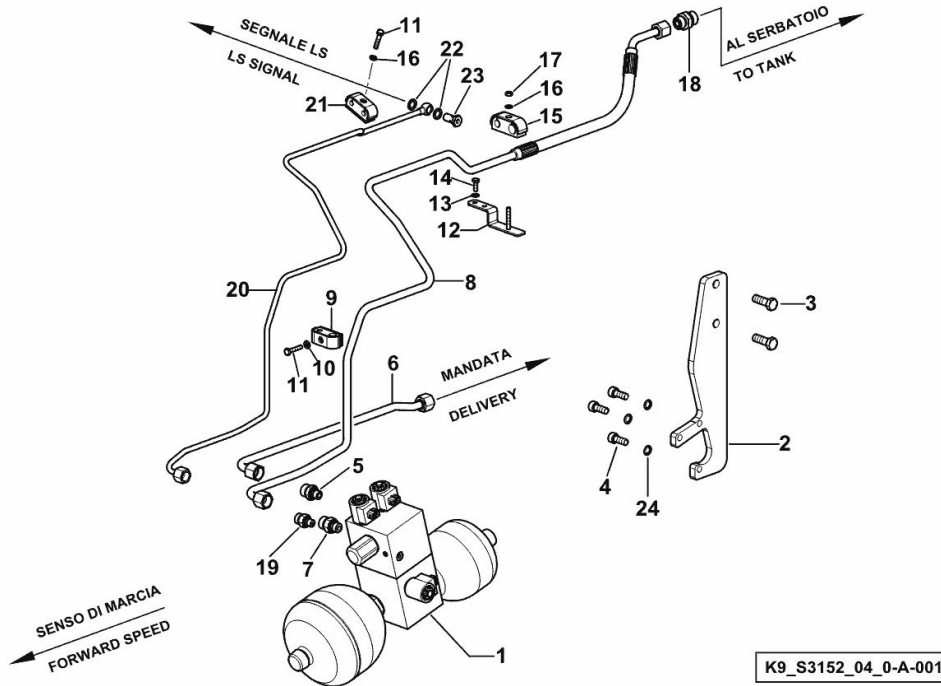
Ref: H0.04.1 (1)

Fig.	P/n	QTY	Name
------	-----	-----	------

Notes:

[R6.125 DCR 4V VRT]

1	04455149/40	1	accumulator kpl. ☞ 04455149/40
2	0.015.3776.0/10	1	bracket
3	2.0112.413.2	2	screw m 12 p.1.75x35
4	2.0312.308.2	3	screw m 10 p.1.5 x 25
5	2.3249.313.2	1	pipe fitting m 14 p.1.5-13/16
6	0.018.3288.3	1	tube
7	2.3272.008.0	1	pipe fitting m 16/12
8	0.018.3292.3/10	1	tube
9	2.3320.204.0	1	collar Ø 8/12
10	2.1310.002.2	1	flat washer 6.4x12.5
11	2.0112.011.2	2	screw m 6 p.1x30
12	0.018.3294.3	1	bracket
13	2.1475.001.7	2	washer 6.4x12
14	2.0112.005.2	2	screw m 6 p.1 x 16
15	2.3320.313.0	1	clamp
16	2.1470.002.2	2	lock washer 6
17	2.1011.103.2	1	nut m 6 p.1
18	2.3249.488.2	1	pipe fitting m 22 p.1.5
19	2.3272.005.0	1	pipe fitting m 12
20	0.018.3293.3/20	1	tube
21	2.3320.202.0	1	clamp Ø 8/8
22	2.1560.008.0	2	gasket 12.2 x 18
23	2.3335.005.2	1	pipe union m 12 p.1.5 x 24
24	2.1480.015.2	3	washer 10



K9_S3152_04_0-A-001

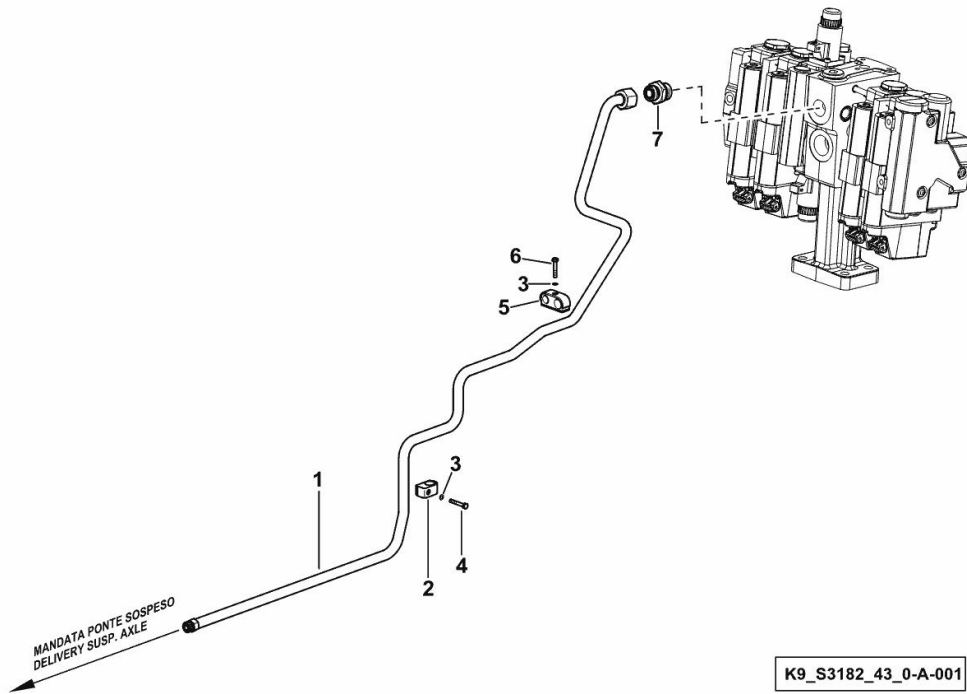
FRONT SUSPENSION DELIVERY LINE

Fig.	P/n	QTY	Name
------	-----	-----	------

Notes:

- FOR VERSIONS WITHOUT FRONT BRAKES AND WITHOUT FRONT LIFT [R6.125 DCR 4V VRT]

1	0.018.3261.3	1	tube
2	2.3320.111.0	1	terminal Ø 20
3	2.1470.002.2	2	lock washer 6
4	2.0112.015.2	1	screw m 6 p.1x40
5	2.3320.218.0	1	terminal Ø 16/20
6	2.0112.013.2	1	screw m 6 p.1 x 35
7	2.3272.120.0	1	pipe fitting



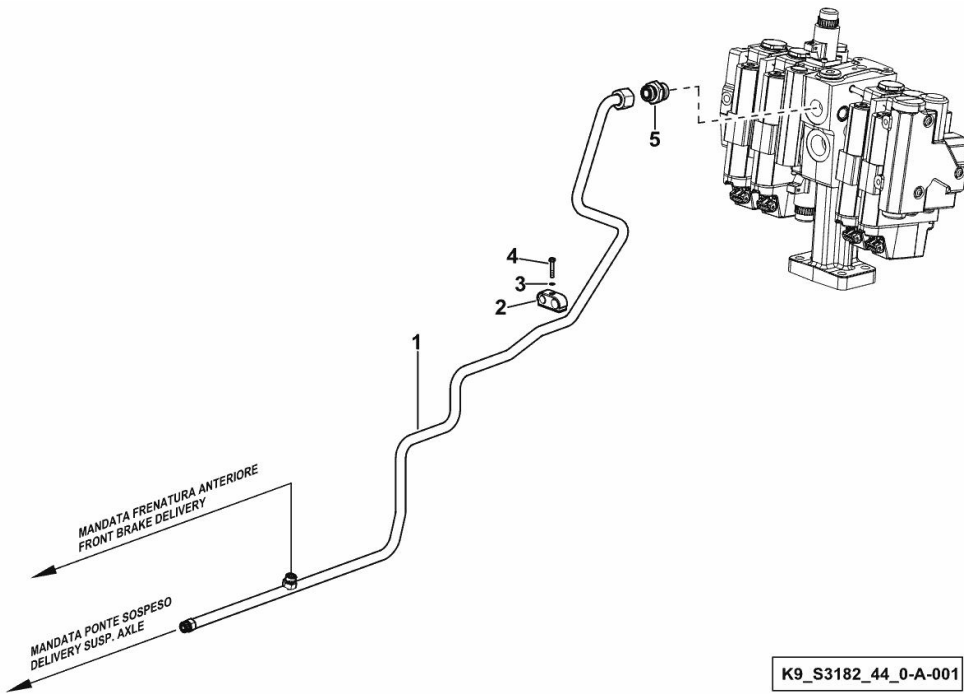
FRONT SUSPENSION DELIVERY LINE

Fig.	P/n	QTY	Name
------	-----	-----	------

Notes:

- FOR VERSIONS WITH FRONT BRAKES AND WITHOUT FRONT LIFT [R6.125 DCR 4V VRT]

1	0.018.3937.3	1	tube
2	2.3320.218.0	1	terminal Ø 16/20
3	2.1470.002.2	1	lock washer 6
4	2.0112.013.2	1	screw m 6 p.1 x 35
5	2.3272.120.0	1	pipe fitting



R6.125 DCR 4V VRT

Section: H0 - HYDRAULIC AND PNEUMATIC SYSTEM|

Ref: H0.04.4 (1)

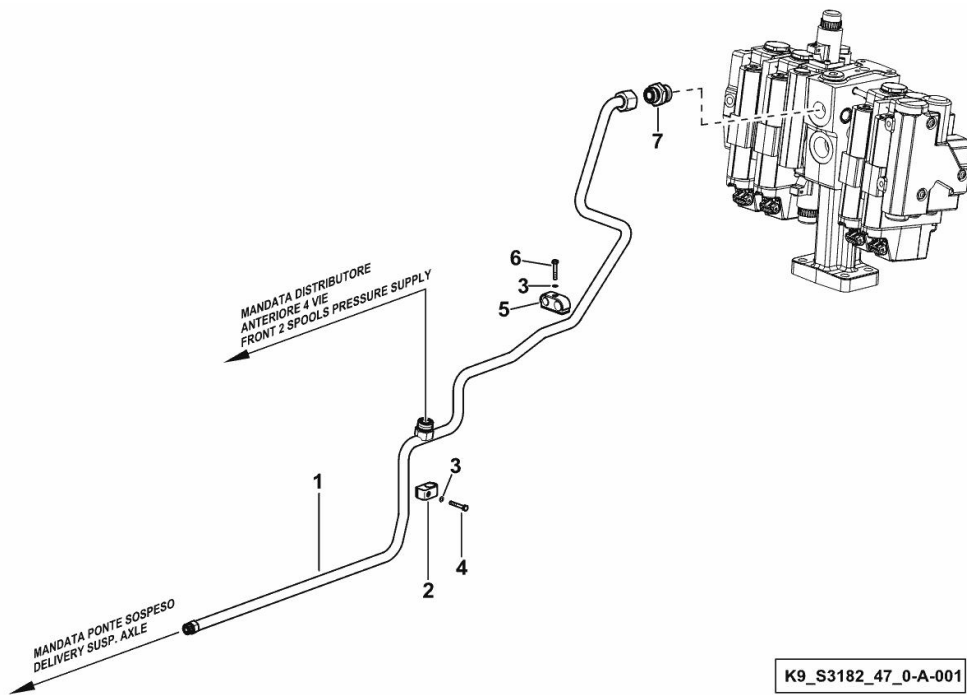
FRONT SUSPENSION DELIVERY LINE

Fig.	P/n	QTY	Name
------	-----	-----	------

Notes:

- FOR VERSIONS WITHOUT FRONT BRAKES AND WITH FRONT LIFT [R6.125 DCR 4V VRT]

1	0.018.3938.3	1	tube
2	2.3320.111.0	1	terminal Ø 20
3	2.1470.002.2	2	lock washer 6
4	2.0112.015.2	1	screw m 6 p.1x40
5	2.3320.218.0	1	terminal Ø 16/20
6	2.0112.013.2	1	screw m 6 p.1 x 35
7	2.3272.120.0	1	pipe fitting



R6.125 DCR 4V VRT

Section: H0 - HYDRAULIC AND PNEUMATIC SYSTEM|

Ref: H0.04.5 (1)

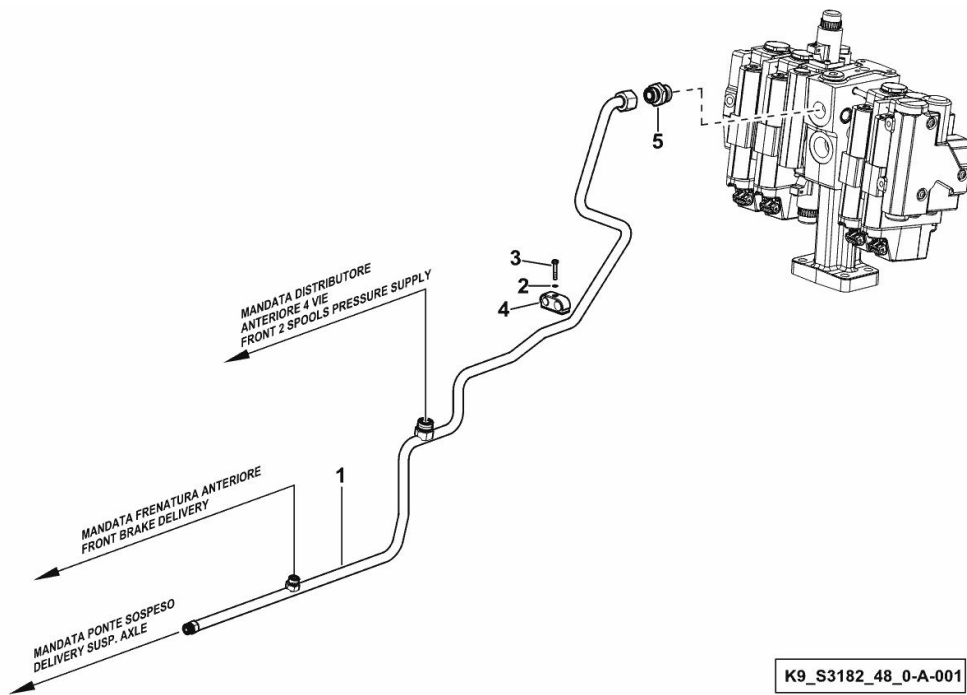
FRONT SUSPENSION DELIVERY LINE

Fig.	P/n	QTY	Name
------	-----	-----	------

Notes:

- FOR VERSIONS WITH FRONT BRAKES AND FRONT LIFT [R6.125 DCR 4V VRT]

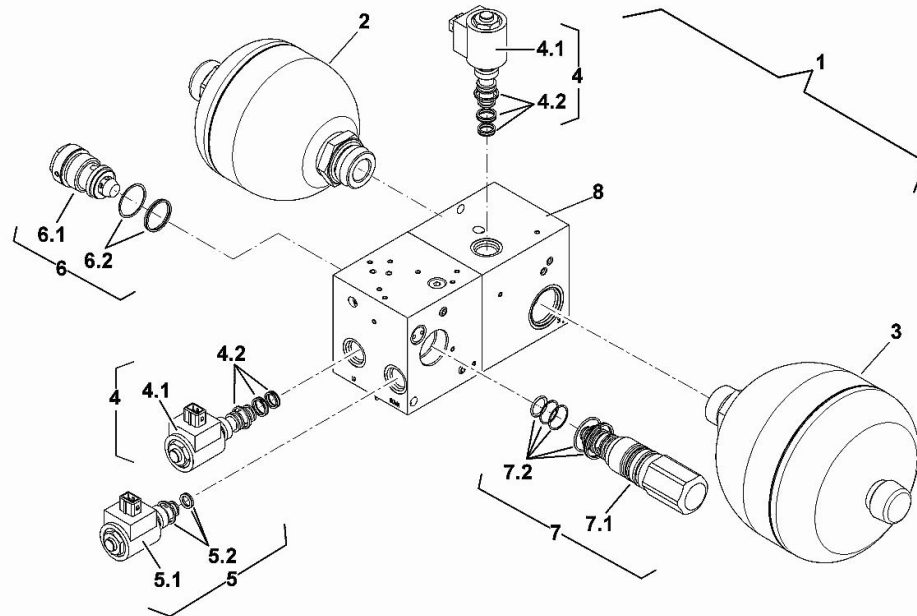
1	0.018.3216.3	1	tube
2	2.1470.002.2	1	lock washer 6
3	2.0112.013.2	1	screw m 6 p.1 x 35
4	2.3320.218.0	1	terminal Ø 16/20
5	2.3272.120.0	1	pipe fitting



ACCUMULATOR

Fig.	P/n	QTY	Name
1	04455149/40	1	accumulator kpl.
2	0.900.1132.2	1	accumulator
3	0.900.1132.3	1	accumulator
4	0.900.1132.4	2	solenoid valve
4.1	0.900.1132.5	2	coil
4.2	0.900.1359.4	2	seal ring kit
5	0.900.1132.6	1	solenoid valve
5.1	0.900.1132.5	1	coil
5.2	0.900.1359.5	1	seal ring kit
6	0.900.1132.7	1	valve
6.1	0.000.0000.1	1	cannot be supplied
6.2	0.900.1359.6	1	seal ring kit
7	0.900.1132.8	1	valve
7.1	0.000.0000.1	1	cannot be supplied
7.2	0.900.1359.7	1	seal ring kit
8	0.000.0000.1	1	cannot be supplied
9	0.900.1359.8	1	seal ring kit

04455149/40



Buy Now



Our support email:

ebooklibonline@outlook.com