

**Model
Vaiw
Tractors**

Operators Manual



RI-221

Reprinted






THIS SAFETY ALERT SYMBOL INDICATES IMPORTANT SAFETY MESSAGES IN THIS MANUAL. WHEN YOU SEE THIS SYMBOL, CAREFULLY READ THE MESSAGE THAT FOLLOWS AND BE ALERT TO THE POSSIBILITY OF PERSONAL INJURY OR DEATH.

M171B

If Safety Decals on this machine use the words **Danger, Warning or Caution**, which are defined as follows:

- **DANGER:** Indicates an immediate hazardous situation which if not avoided, will result in death or serious injury. The color associated with Danger is RED.
- **WARNING:** Indicates an potentially hazardous situation which if not avoided, will result in serious injury. The color associated with Warning is ORANGE.
- **CAUTION:** Indicates an potentially hazardous situation which if not avoided, may result in minor or moderate injury. It may also be used to alert against unsafe practices. The color associated with Caution is YELLOW.

If Safety Decals on this machine are ISO two panel Pictorial, decals are defined as follows:

- The first panel indicates the nature of the hazard.
- The second panel indicates the appropriate avoidance of the hazard.
- Background color is YELLOW.
- Prohibition symbols such as   and  if used, are RED.



WARNING

IMPROPER OPERATION OF THIS MACHINE CAN CAUSE INJURY OR DEATH. BEFORE USING THIS MACHINE, MAKE CERTAIN THAT EVERY OPERATOR:

- Is instructed in safe and proper use of the machine.
- Reads and understands the Manual(s) pertaining to the machine.
- Reads and understands ALL Safety Decals on the machine.
- Clears the area of other persons.
- Learns and practices safe use of machine controls in a safe, clear area before operating this machine on a job site.

It is your responsibility to observe pertinent laws and regulations and follow Case Corporation instructions on machine operation and maintenance.

Operator's Instruction Manual

CASE



**MODEL
VAIW
TRACTORS**

First Edition

J. I. Case Co.

RACINE, WISCONSIN - U. S. A.



TO PURCHASERS OF NEW CASE TRACTORS



Congratulations on your purchase of a CASE tractor. Welcome to the ever-increasing number of satisfied CASE owners.

The dependability and economical performance of your new CASE tractor will prove that you were wise in making this choice.

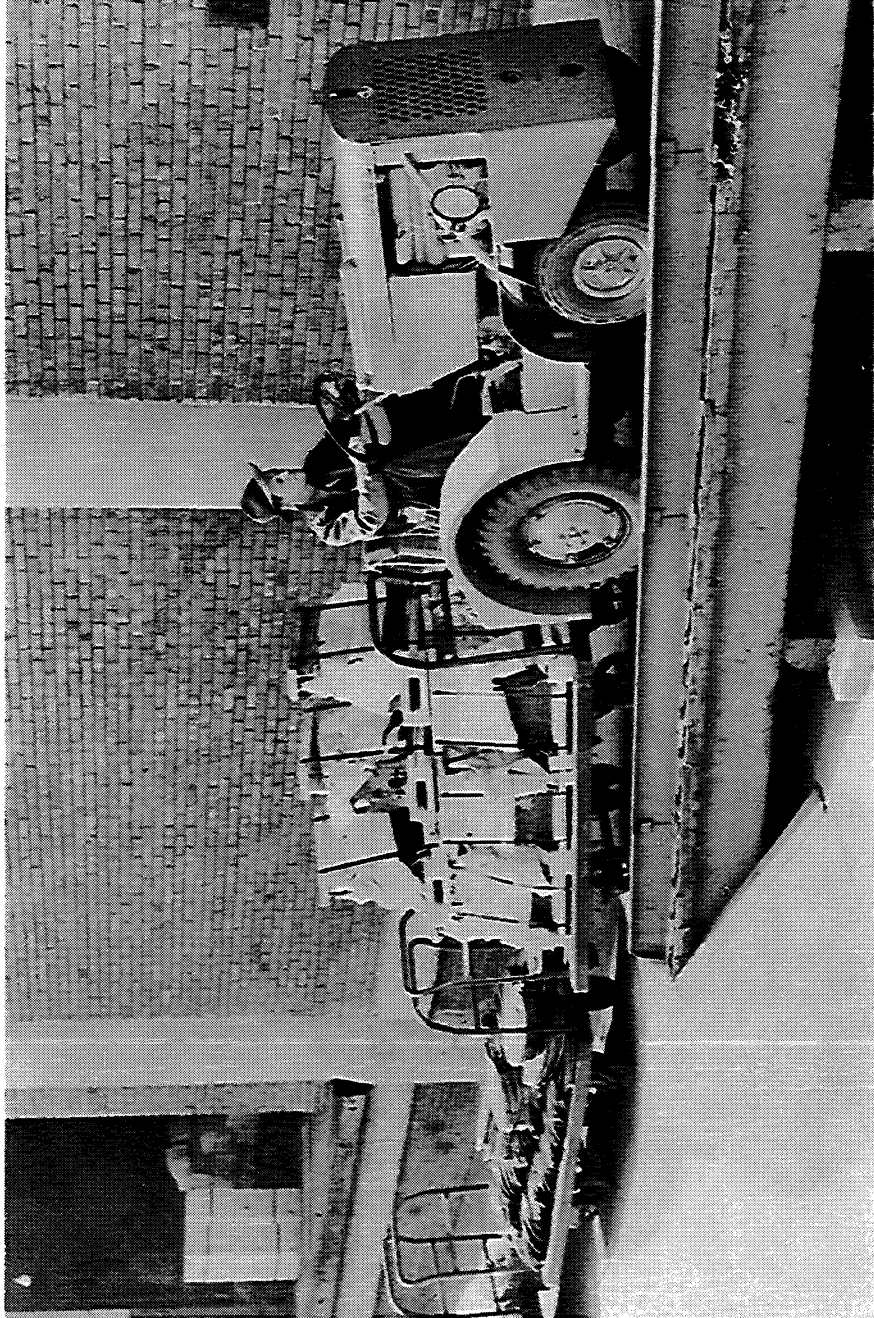
The organization back of your machine has been building quality farm equipment for more than a century. Your CASE tractor was built in one of the largest and best equipped plants in the world. In this factory quality materials, the finest precision machinery, high grade workmanship, thorough inspection, and complete testing equipment are combined to give you the best in performance and economical operation.

The care which you give your machine will have a great deal to do with the service and satisfaction you get from it. By observing the precautions and suggestions in this manual, your CASE tractor will serve you well for many years. Make this manual your guide. Should you need information not covered here, or should your machine require special servicing, contact your Case dealer. He has trained men who are kept informed on the best methods of servicing CASE machines in the field or in his shop.

When it becomes necessary, after long use, to replace certain parts on your tractor, be sure to use only genuine CASE parts which insure proper fit and continued good service. These may be obtained from your CASE dealer. It is always helpful to provide him with the MODEL AND SERIAL NUMBER of your tractor in addition to a description of the parts required.

ALPHABETICAL INDEX

	Page No.
Air Cleaner	17
Battery	34
Bearings—Front Wheels	13
Brakes	39, 40
Carburetor	20, 21
Clutch	37, 38
Cold-Weather Operation	7, 17
Cooling System	15, 16
Crankcase Breather	15
Distributor	12, 24, 25, 26
Fan Belt	16
Fuel	19
Fuel Filter	21
Fuse	33
Generator	12, 32
Governor	33
Lubrication	10, 11, 12, 13, 14
Magneto	13, 27, 28, 29
Oil Filter	18
Oil Pump—Engine	35
Seat	41
Serial Number	9
Service Suggestions	22, 23
Spark Plugs	30
Specifications	5
Speeds	5
Starting and Lighting	31, 32, 33
Starting Engine	7, 8
Storing Tractor	42
Tools	6
Valves	36, 37
Warranty	43



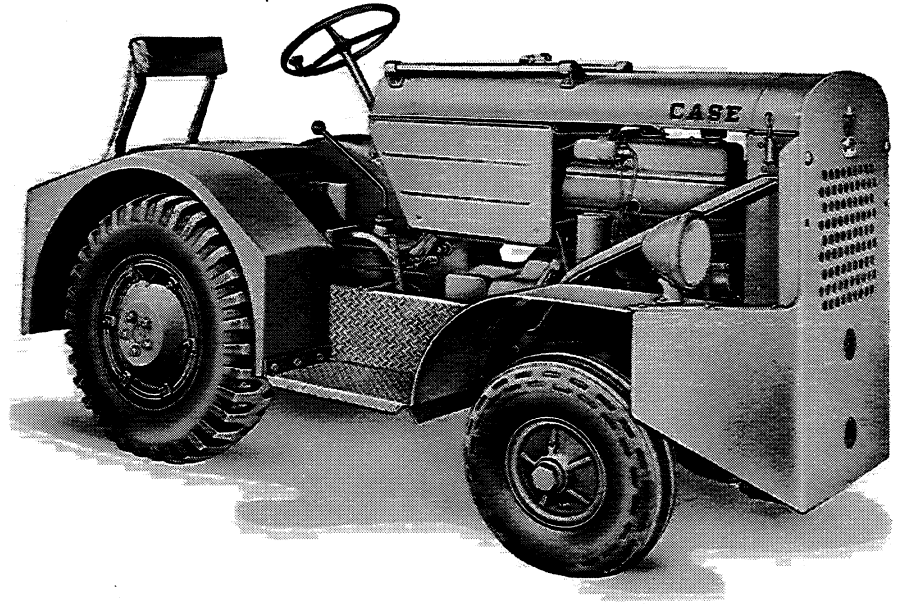


Figure 1. Right Front VAIW-3

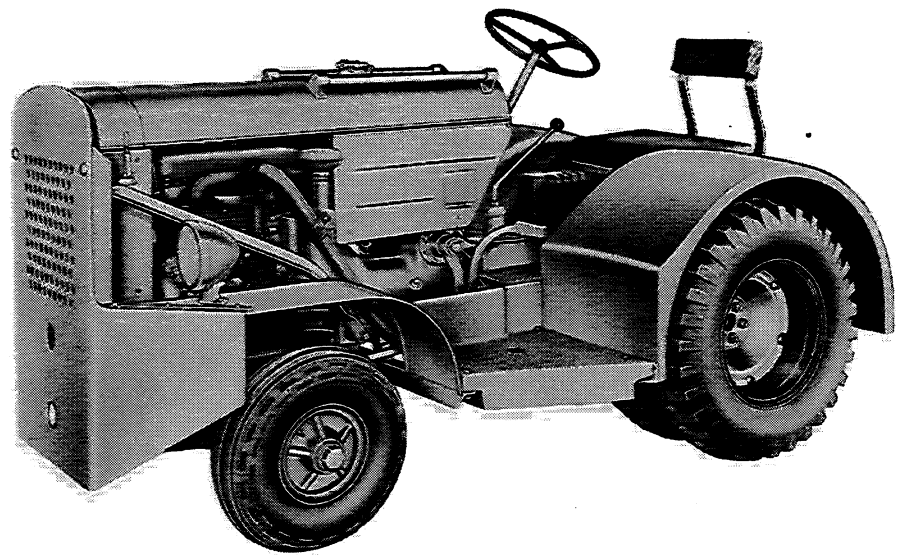


Figure 2. Left Front VAIW-4

Buy Now



Our support email:

ebooklibonline@outlook.com