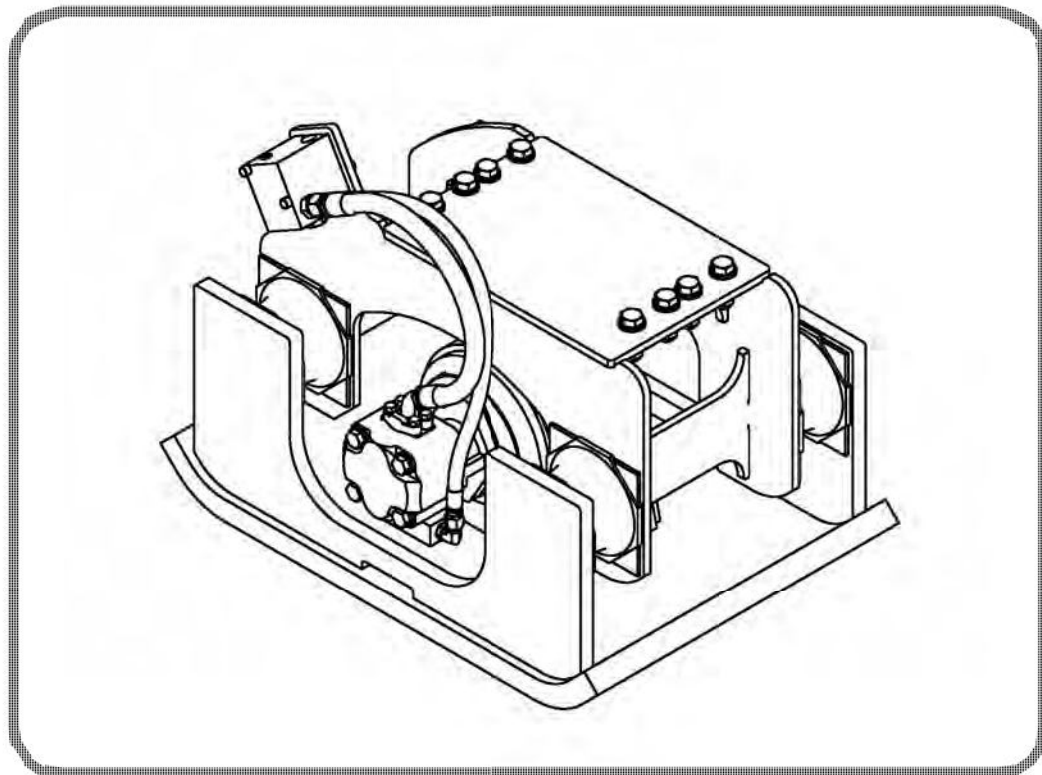




Bobcat®

Service Manual Plate Compactor

(PCF34) S/N AW3H00101 & Above
(PCF64) S/N AVNY00101 & Above



Dealer Copy -- Not for Resale



MAINTENANCE SAFETY



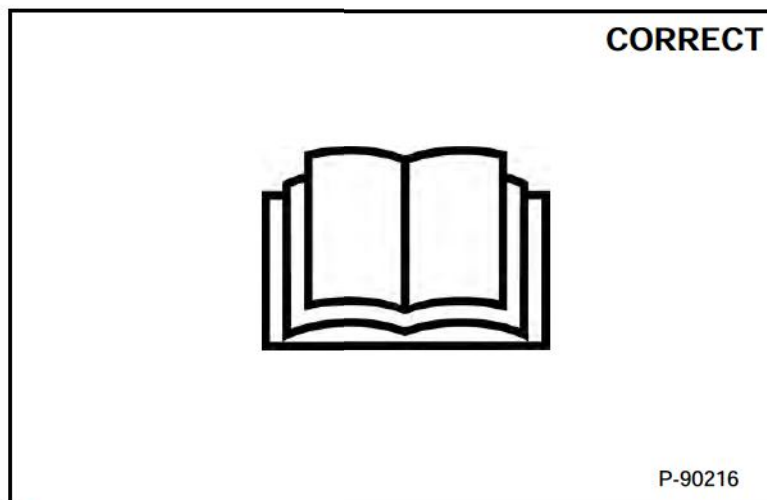
WARNING









Instructions are necessary before operating or servicing machine. Read and understand the Operation & Maintenance Manual, Operator's Handbook and signs (decals) on machine. Follow warnings and instructions in the manuals when making repairs, adjustments or servicing. Check for correct function after adjustments, repairs or service. Untrained operators and failure to follow instructions can cause injury or death.

W-2003-0807



Safety Alert Symbol: This symbol with a warning statement, means: "Warning, be alert! Your safety is involved!" Carefully read the message that follows.



-  Never service attachments / implements without instructions. See Operation & Maintenance Manual and Attachment / Implement Service Manual.
-  Cleaning and maintenance are required daily.
-  Never service or adjust attachment / implement with the engine running unless instructed to do so in manual.
-  Always lower the attachment / implement to the ground before lubricating or servicing.
-  Avoid contact with leaking hydraulic fluid or diesel fuel under pressure. It can penetrate skin or eyes.
-  Stop, cool and clean engine of flammable materials before checking fluids.
-  Keep body, loose objects and clothing away from moving parts, electrical contacts, hot parts and exhaust.
-  Safety glasses are needed for eye protection from electrical arcs, battery acid, compressed springs, fluids under pressure and flying debris or when tools are used. Use eye protection approved for type of welding.

Dealer Copy -- Not for Resale

MSW30-0409

CONTENTS

SAFETY AND MAINTENANCE	10-01
HYDRAULIC SYSTEM	20-01
MAINFRAME	30-01
SPECIFICATIONS	SPEC-01
ALPHABETICAL INDEX	INDEX-01

Dealer Copy -- Not for Resale

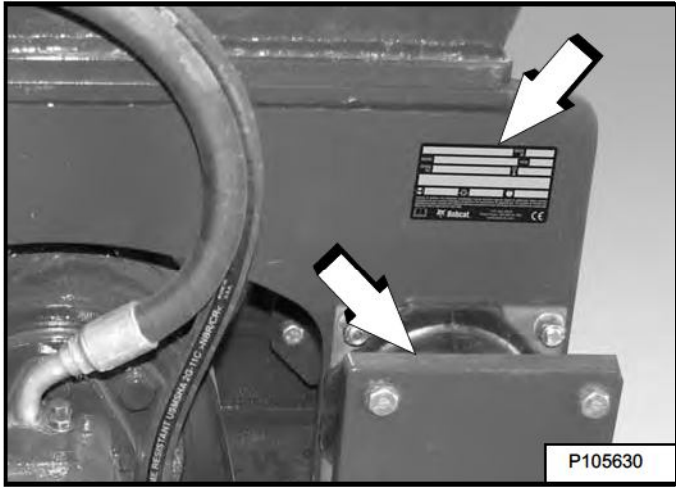
FOREWORD

SERIAL NUMBER LOCATION	1-7
Attachment Serial Number	1-7
DELIVERY REPORT	1-7
ATTACHMENT IDENTIFICATION	1-8

SERIAL NUMBER LOCATION

Attachment Serial Number

Figure 1

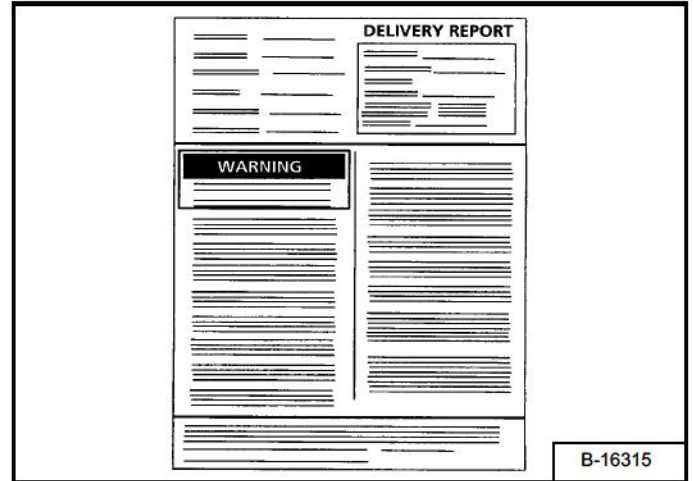


Always use the serial number of the attachment when requesting service information or when ordering parts. Early or later models (identification made by serial number) may use different parts, or it may be necessary to use a different procedure in doing a specific service operation [Figure 1].

The serial number is also stamped into the upper surface of the isolator mount.

DELIVERY REPORT

Figure 2

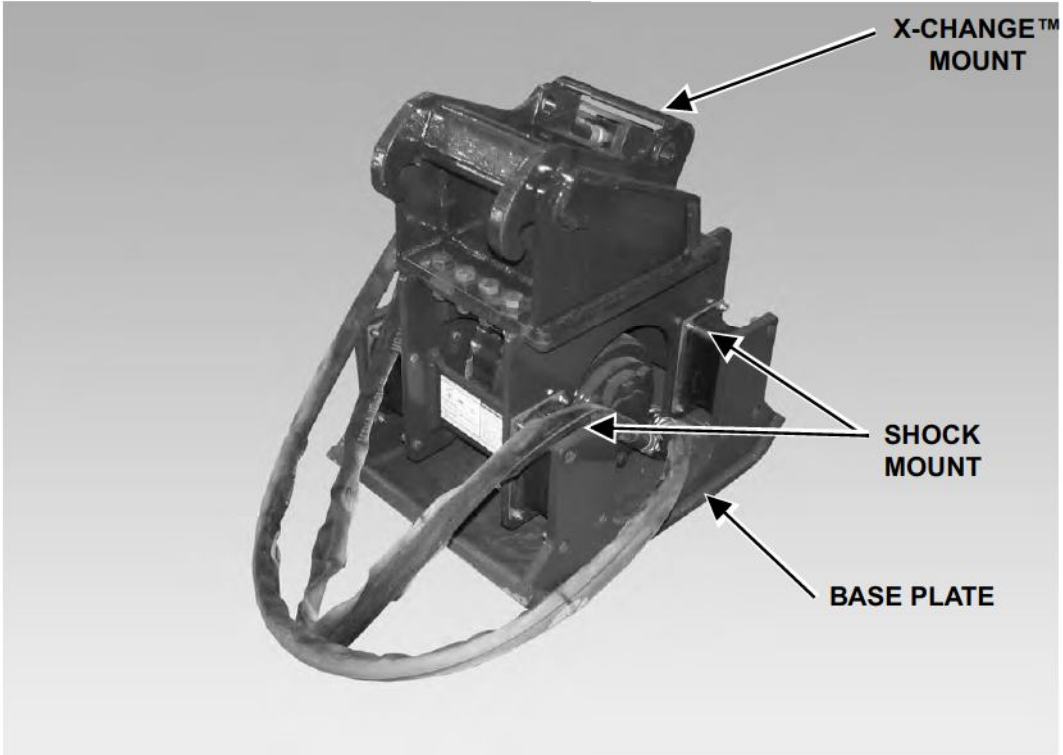


The delivery report [Figure 2] must be completed by the dealer and signed by the owner or operator when the Bobcat attachment is delivered. An explanation of the form must be given to the owner.

Dealer Copy -- Not for Resale

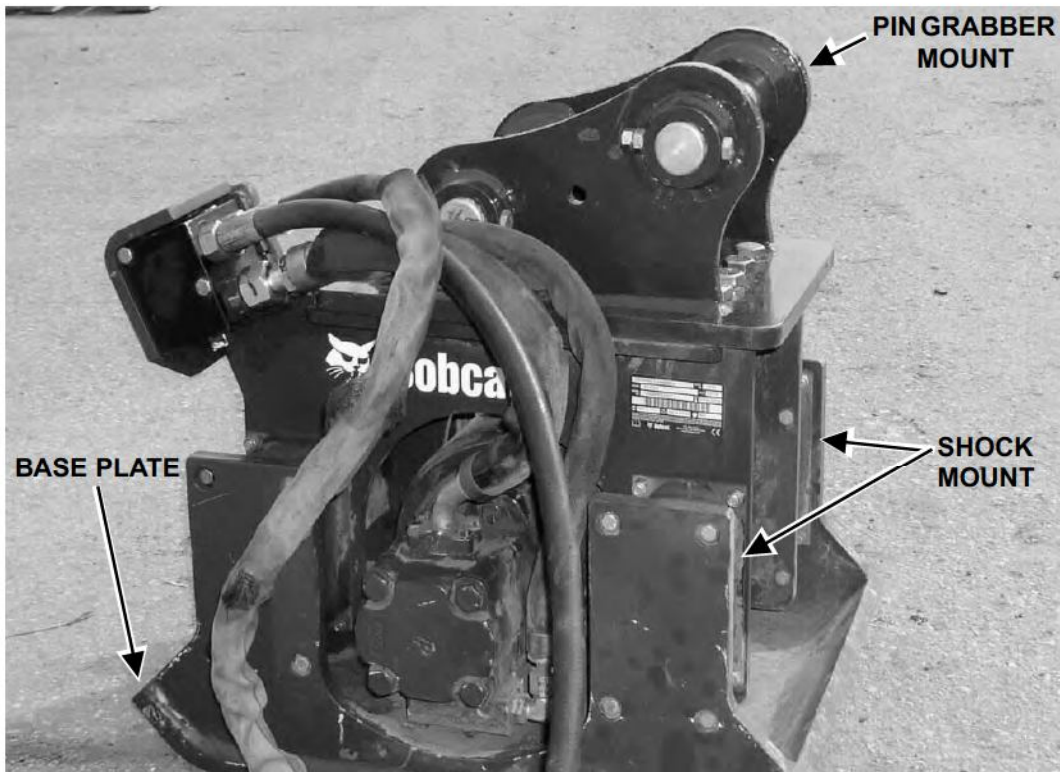
ATTACHMENT IDENTIFICATION

MODEL PCF34



P105216

MODEL PCF34

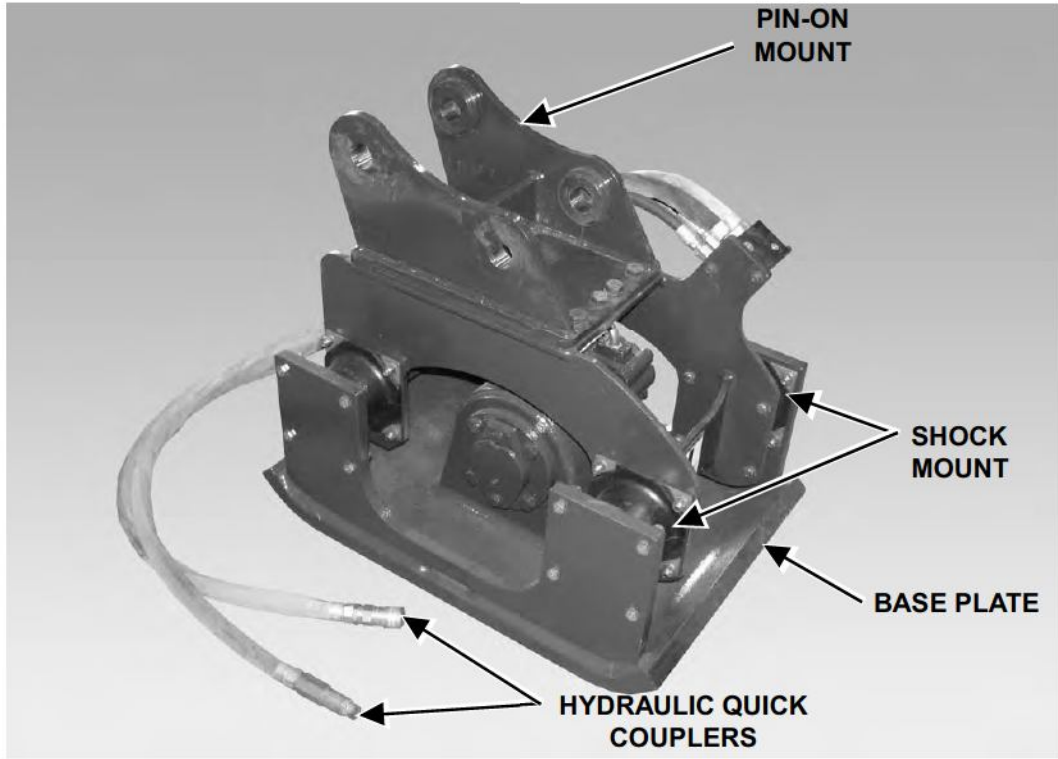


P105217

Dealer Copy -- Not for Resale

ATTACHMENT IDENTIFICATION (CONT'D)

MODEL PCF64



P105218

Dealer Copy -- Not for Resale


SAFETY AND MAINTENANCE

TROUBLESHOOTING	10-10-1
Chart	10-10-1
INSPECTION	10-20-1
Daily Inspection	10-20-1
Attachment Mount	10-20-2
X-Change™ Inspection	10-20-2
Pin Grabber Quick Coupler	10-20-2
LUBRICATION	10-30-1
Lubrication Locations	10-30-1
ATTACHMENT STORAGE AND RETURN TO SERVICE	10-40-1
Storage	10-40-1
Return To Service	10-40-1

Dealer Copy -- Not for Resale

TROUBLESHOOTING

Chart

 WARNING	<p>Instructions are necessary before operating or servicing machine. Read and understand the Operation & Maintenance Manual, Operator's Handbook and signs (decals) on machine. Follow warnings and instructions in the manuals when making repairs, adjustments or servicing. Check for correct function after adjustments, repairs or service. Untrained operators and failure to follow instructions can cause injury or death.</p> <p style="text-align: right;">W-2003-0807</p>
--	--

If the attachment is not working correctly, check the hydraulic system of the machine thoroughly before making any repairs on the attachment. Attachment problems can be affected by a hydraulic system that is not operating to specifications. Connect a flow meter to the machine to check the hydraulic pump output, relief valve setting and tube lines to check flow and pressure. (See the machine's Service Manual for the correct procedure to connect the flow meter.)

Use the following troubleshooting chart to locate and correct problems which most often occur with the attachment.

PROBLEM	CAUSE	CORRECTION
Plate compactor does not operate.	No hydraulic flow to the plate compactor.	Check the hydraulic flow to the plate compactor.
	Damaged quick couplers or hoses.	Replace quick couplers or hoses.
	Machine fluid reservoir is low.	Add hydraulic fluid to the reservoir on the machine.
	Plate compactor bearings seized.	Replace bearings.
	Machine main relief valve set too low.	Adjust main relief valve to correct setting.
	Machine hydraulic pump not working.	Check flow of hydraulic pump. Repair or replace as needed.
	Hydraulic flow to plate compactor in wrong direction (check valve in system).	Change flow direction with auxiliary hydraulic pedal.
Rapid bearing failure.	lack of lubrication	Lubricate both bearings every 40 hours.
Rapid shock mount failure.	Excessive down pressure.	Stretch shock mounts no more than 51 - 64 mm (2.0 - 2.5 in) during operation.
	Cold weather operation.	Warm up according to WARM UP procedure. See Operation and Maintenance Manual.
Failure to achieve required compaction specifications.	Incorrect use.	See OPERATION section of the Operation and Maintenance Manual.
	Moisture / soil content incorrect for specified density.	Correct condition of soil or plate compactor specifications are not reasonable for conditions.

Dealer Copy -- Not for Resale

Buy Now



Our support email:

ebooklibonline@outlook.com