

SERVICE MANUAL

Loaders

680 CK
Series C

9-72595

1. Trim along dashed line.
2. Slide into pocket on Binder Spine.

TYPE 1-4

SERVICE MANUAL

Loaders

680 CK
Series C

9-72595

1. Trim along dashed line.
2. Slide into pocket on Binder Spine.

TYPE 1-4

SERVICE MANUAL

Loaders

680 CK
Series C

9-72595

1. Trim along dashed line.
2. Slide into pocket on Binder Spine.

TYPE 1-4

SERVICE MANUAL

Loaders

680 CK
Series C

9-72595

1. Trim along dashed line.
2. Slide into pocket on Binder Spine.

TYPE 1-4

TABLE OF CONTENTS

SERIES/SECTION	SECTION NO.
10 SERIES - GENERAL	
General Engine Specifications	11
Maintenance and Lubrication	1050
Torque Chart	1051
20 SERIES - ENGINES	
Cylinder Head and Valves	22
Engine Block Assembly	23
Water Pump, Thermostats, Oil Cooler, and Filters	25
Engine Removal and Stall Checks	2050
Air Cleaner	2051
30 SERIES - FUEL SYSTEM	
Fuel System and Filters	3010
Fuel Injection Pumps	3012
Roosa-Master Fuel Injectors	3013
Electric Fuel Pump	3051
Fuel Lines and Throttle Adjustment	3052
40 SERIES - HYDRAULICS	
Hydraulic Diagrams, Trouble Shooting, Pressure Checks	4011
Hydraulic Pump	4013
Loader Control Valve	4021
Case Backhoe Control Valve	4022
Commercial-Shearing Backhoe Control Valve	4023
Extendahoe Control Valve	4029
Stabilizer Lock Valve	4030
Hydra-Guide	4040
Boom Lockout Valve and Relief Valve	4041
Loader and Backhoe Cylinders	4057
 NOTE: Also see Sections 9011 and 9012 for exploded views of hydraulic system.	
50 SERIES - STEERING	
Hydraulic Diagram, Trouble Shooting, Pressure Check	5011
Steering Pump	5012
Steering Valve and Column	5013
Steering Cylinders	5015
Front Axle	5017
60 SERIES - POWER TRAIN	
Transmission/Converter Hydraulic Diagram, Operation and Description	6011
Trouble Shooting and Testing	6012
Forward-Reverse Transmission (Power Shuttle)	6014
Four Speed Mechanical Transmission	6018
Rear Axle	6020
Drive Shaft	6022

SERIES/SECTION

SECTION NO.

70 SERIES - BRAKES

Air System Diagrams, Operation, Pressurizing/Depressurizing
the Air System, and Trouble Shooting 7011

Foot Brakes and Slack Adjuster 7013

Air Compressor, Governor, Reservoir, Moisture Ejection Valve 7014

Brake Valve 7015

Brake Actuator 7016

Parking Brake Control Valve and Quick Release Valve 7017

Pressure Reducing Valve, Pressure Protection Valve
Double Check Valve, Clutch Cutout Valve, Stoplight Switch 7018

Alcohol Evaporator 7020

80 SERIES - ELECTRICAL

Wiring Diagrams 8011

Trouble Shooting and Adjustments 8012

Batteries 8014

Starter and Starter Solenoid 8015

Alternator 8016

90 SERIES - MOUNTED EQUIPMENT

Loader 9011

Backhoe 9012

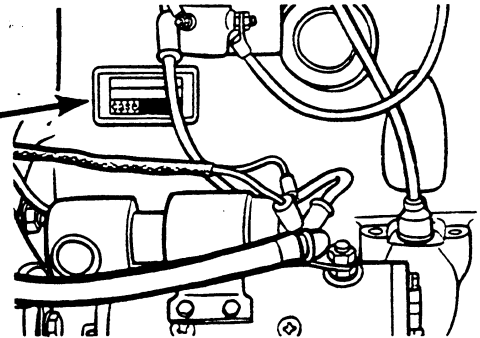
ROPS Cab and Canopy 9019

Front Floor Plate Assembly 9028

Section 11

GENERAL ENGINE SPECIFICATIONS 680 CK Series C Loaders

THE MODEL AND ENGINE SERIAL NUMBER IS STAMPED ON A PLATE LOCATED ON THE SIDE OF THE ENGINE ABOVE THE CRANKING MOTOR.



DIESEL ENGINES

General

Type	4 Cylinder, 4 Stroke Cycle, Valve-in-Head
Firing Order	1-3-4-2
Bore	4-3/8 Inches
Stroke	5 Inches
Piston Displacement	301 Cubic Inches
Compression Ratio	16.5 to 1
No Load Governed Speed	2360 RPM
Rated Engine Speed	2200 RPM
Engine Idling Speed	725 to 775 RPM
*Valve Tappet Clearance (Exhaust)	(Hot) .020 Inch (Cold) .025 Inch
(Intake)	(Hot and Cold) .015 Inch

*Hot Settings Are Made After The Engine Has Operated At Thermostat Controlled Temperature For At Least Fifteen Minutes.

Piston and Connecting Rods

Rings per Piston	3
Number of Compression Rings	2
Number of Oil Rings	1
Type Pins	Full Floating Type
Type Bearing	Replaceable Precision, Steel Back, Copper-Lead Alloy Liners

Main Bearings

Number of Bearings	5
Type Bearings	Replaceable Precision, Steel Back, Copper-Lead Alloy Liners

Engine Lubricating System

Oil Pressure	45 to 55 Pounds with Engine Warm and Operating at Rated Engine Speed
Type System	Pressure and Spray Circulation
Oil Pump	Gear Type
Oil Filter	Full Flow Spin on Type

Fuel System

Fuel Injection Pump	Robert Bosch, Type PES Multiple Plunger
Pump Timing	31 Degrees Before Top Dead Center (Port Closing)
Fuel Injectors	Pencil Type (Opening Pressure 2800 PSI)
Fuel Transfer Pump	Plunger Type, Integral Part of Injection Pump
Governor	Variable Speed, Fly-Weight Centrifugal Type, Integral Part of Injection Pump
1st Stage Fuel Filter	Full Flow Spin on Type
2nd Stage Fuel Filter	Full Flow Spin on Type

Section 1050

**MAINTENANCE
AND
LUBRICATION**

Thank you so much for reading.
Please click the “Buy Now!”
button below to download the
complete manual.



After you pay.

You can download the most
perfect and complete manual in
the world immediately.

Our support email:

ebooklibonline@outlook.com