



Service Repair Manual

Models

242B2 Skid Steer Loader

Product: SKID STEER LOADER

Model: 242B SKID STEER LOADER BXM

Configuration: 242B2 Skid Steer Loader BXM04225-UP (MACHINE) POWERED BY 3024C Engine

Disassembly and Assembly

C1.1, C1.5 and C2.2 Engines for Caterpillar Built Machines

Media Number -KENR6948-06

Publication Date -01/06/2015

Date Updated -02/08/2018

i02602632

Engine Oil Pump - Remove

SMCS - 1304-011

Removal Procedure

Start By:

- a. Remove the front housing. Refer to Disassembly and Assembly, "Housing (Front) - Remove".

NOTICE

Care must be taken to ensure that fluids are contained during performance of inspection, maintenance, testing, adjusting and repair of the product. Be prepared to collect the fluid with suitable containers before opening any compartment or disassembling any component containing fluids.

Dispose of all fluids according to local regulations and mandates.

NOTICE

Keep all parts clean from contaminants.

Contaminants may cause rapid wear and shortened component life.

NOTICE

If the front housing is not installed, do not turn the crankshaft.
Damage to the engine may occur.

Engine Oil Pump

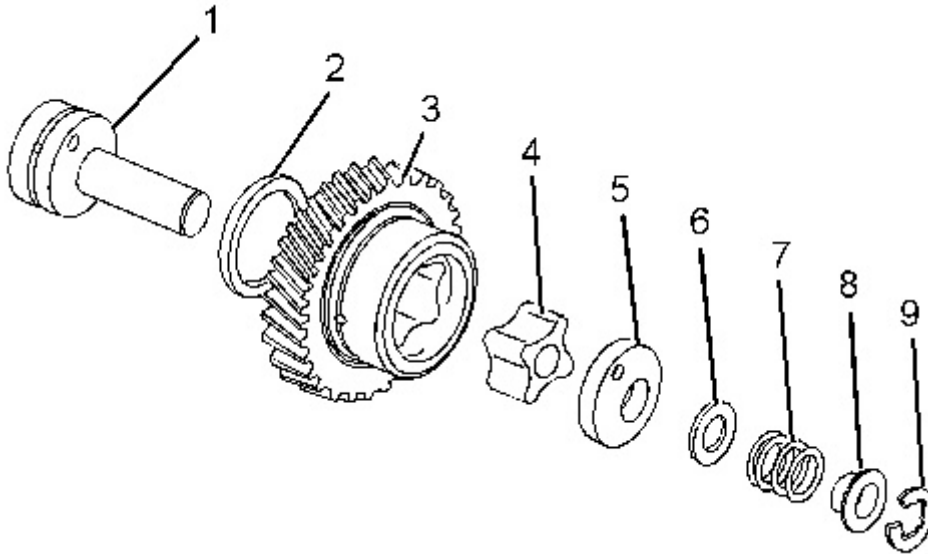


Illustration 1

g01304840

WARNING

Personal injury can result from being struck by parts propelled by a released spring force.

Make sure to wear all necessary protective equipment.

Follow the recommended procedure and use all recommended tooling to release the spring force.

1. Remove C-clip (9) that retains idler gear (3) on idler hub (1).
2. Remove the following items from idler hub (1):
 - Collar (8)
 - Spring (7)

- Shim (6)
 - Oil pump cover (5)
3. Remove idler gear (3) from idler hub (1).
 4. Remove inner rotor (4) from idler hub (1).
 5. Remove thrust washer (2) from idler hub (1).
 6. In order to remove the suction pipe, follow Steps 6.a through 6.d .

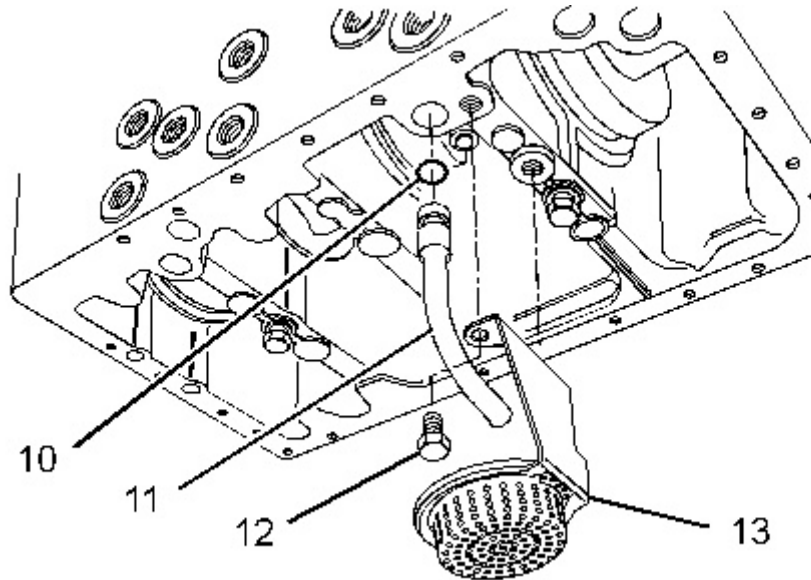


Illustration 2

g01327023

- a. Remove the engine oil pan. Refer to Disassembly and Assembly, "Engine Oil Pan - Remove and Install".
- b. Remove bolts (12) and oil strainer (13) from the cylinder block. Inspect the oil strainer for damage. If the oil strainer is damaged, use a new part for replacement.
- c. Remove suction pipe (11) from the cylinder block.
- d. Remove O-ring seal (10) from the suction pipe.

Idler Hub

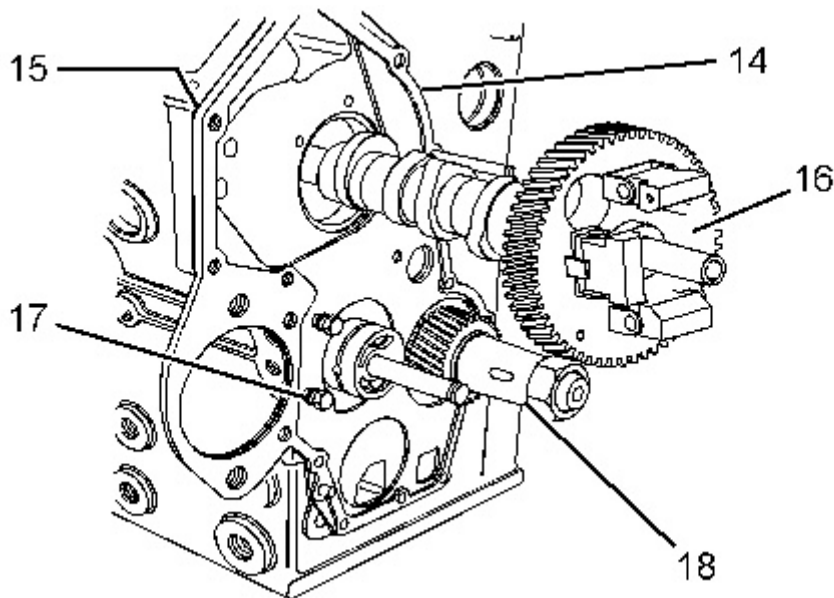


Illustration 3

g01320621

Typical example

1. Remove camshaft (16). Refer to Disassembly and Assembly, "Camshaft - Remove".
 2. Remove bolts (17) and plate (14) from the cylinder block. Remove joint (15).
 3. Remove crankshaft (18). Refer to Disassembly and Assembly, "Crankshaft - Remove".
-

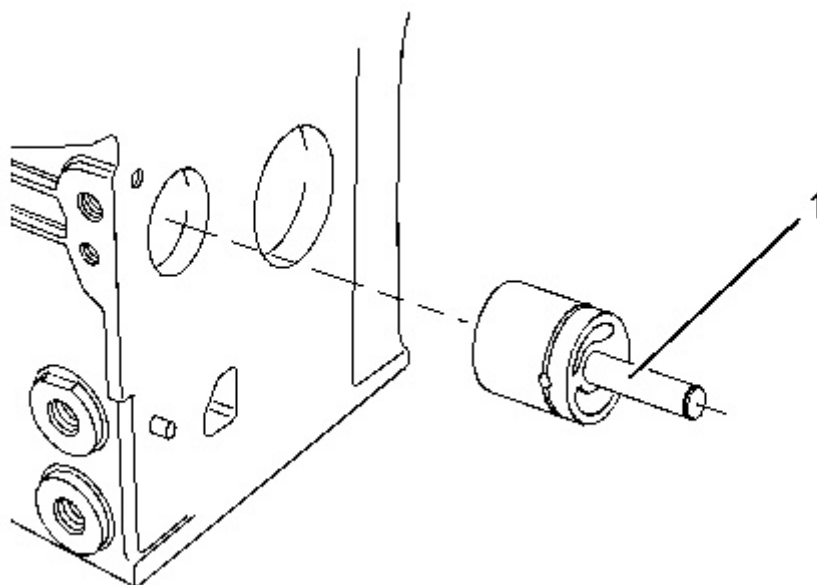


Illustration 4

g01311490

Typical example

4. Use a hammer and use a suitable drift to remove idler hub (1) from the cylinder block. Align the drift to the rear face of the hub and drive the hub from the inside of the cylinder block outward.
-

Thank you so much for reading.
Please click the “Buy Now!”
button below to download the
complete manual.



After you pay.

You can download the most
perfect and complete manual in
the world immediately.

Our support email:

ebooklibonline@outlook.com