

3200 Spring-Reset Moldboard



JOHN DEERE

OPERATORS MANUAL

3200 Spring-Reset
Moldboard

OMA32008 Issue C6 English

John Deere Plow & Planter Works
OMA32008 Issue C6

LITHO IN U.S.A.
ENGLISH





Contents


Page	
2	Safety Suggestions
3	Identification Views
4-5	Preparing for Use
6-7	Attaching and Detaching
8-9	Transporting
10-19	Operating Adjustments
20	Field Adjusting Plow
21-24	Special Equipment
25-26	Lubrication
27-28	Service
29-31	Trouble Shooting
32-35	Converting to 16-Inch (405 mm) Frame
36-45	Assembly
46	Specifications
47-48	Index



Safety Suggestions

2

GENERAL

 The safety of the operator was one of the prime considerations in the minds of John Deere engineers when this plow was designed.

You can make your farm a safer place to live and work if you observe the safety suggestions given. Study these suggestions carefully and insist that they be followed by those working with you and for you.

Remember! An accident is usually caused by someone's carelessness, neglect, or oversight.

TRANSPORTING

Use care when transporting across rough ground.

While transporting the plow on a public road, follow safety instructions outlined under "Transporting," Pages 8 and 9.

HYDRAULIC OIL

Escaping hydraulic oil under pressure can have sufficient force to penetrate the skin, causing serious personal injury. Before disconnecting lines, be sure to relieve all pressure. Before applying pressure to the system, be sure all connections are tight and that lines, pipes and hoses are not damaged. Hydraulic oil escaping from a very small hole can be almost invisible. Use a piece of cardboard or wood, rather than hands, to search for suspected leaks.

If injured by escaping hydraulic oil, see a doctor at once. Serious infection or reaction can develop if proper medical treatment is not administered immediately.

OPERATION

To avoid injury, always be careful while operating a tractor and plow.

Never permit any person other than the operator on the tractor.

Never ride or permit others to ride on the plow.

Stay clear of spring-reset standard while plowing.

If standard hangs up in a partially-tripped position, stay clear of reset path. Use a long pole or other tool to remove obstruction.

Lubrication of standard linkage and keeping springs tight helps prevent standards from hanging up during tripping.

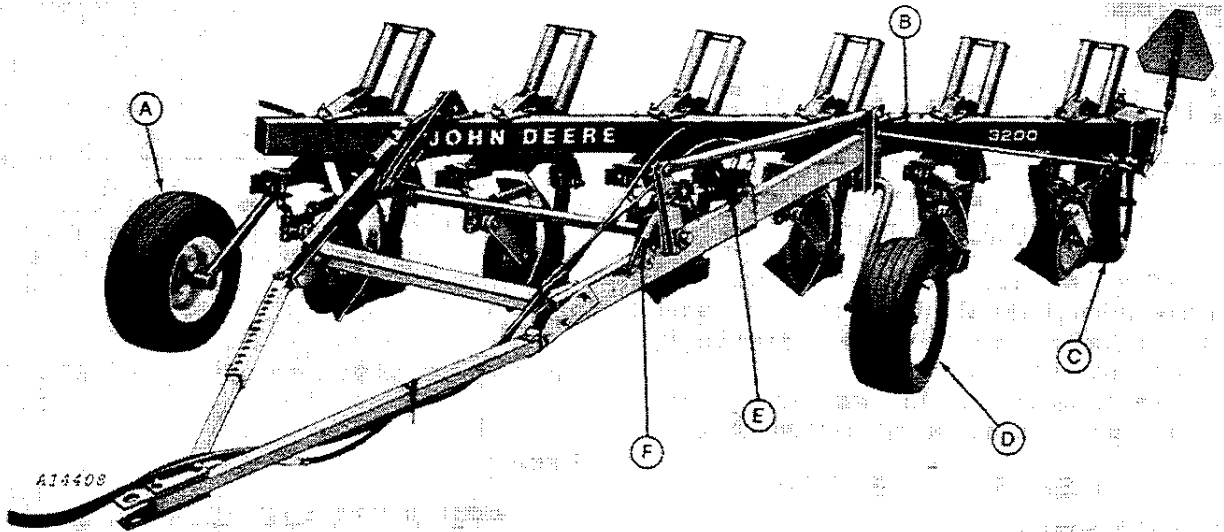
Do not grease, oil, or adjust the plow while it is in motion.

Maintain proper adjustment of coulter to avoid interference with plow bottom during reset.

Allow the rear wheel to clear the furrow before making sharp turns at end of field.

Always lower the plow to the ground when not in use unless plow is secured in storage position. See page 19. With the tractor engine shut-off move the selective control lever back and forth to relieve pressure in cylinder and hoses.

If spray can paint is used for protecting plow bottoms to be put in storage, be careful when discarding empty can. Do not incinerate or puncture can.

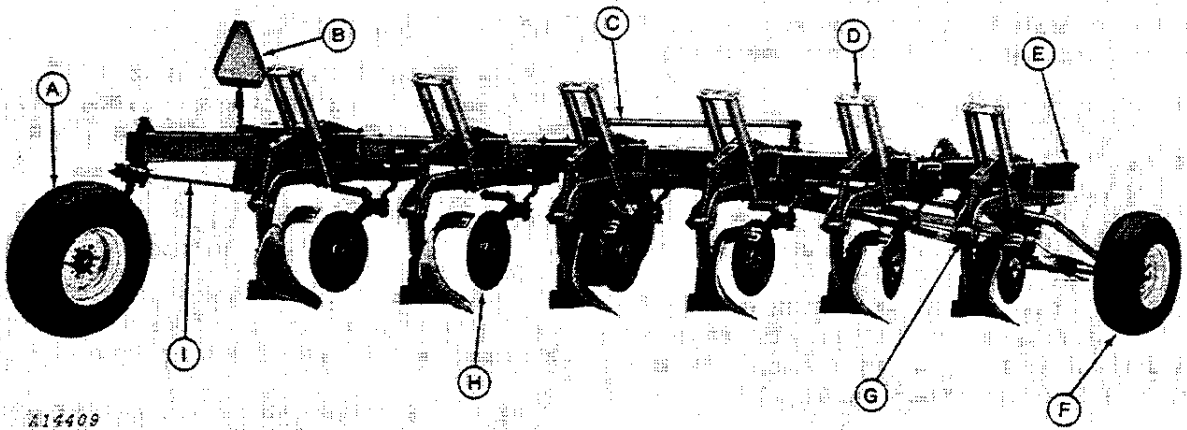


A—Furrow Wheel
B—Lift Rod

C—Rear Wheel
D—Land Wheel

E—Remote Hydraulic Cylinder
F—Transport Lock Strap

*John Deere 3200 Series Six-Bottom Spring-Reset Drawn Moldboard Plow
(Trash Boards, Special Equipment)*



A—Rear Wheel
B—SMV Emblem
C—Lift Rod

D—Spring Can
E—Reflector
F—Furrow Wheel

G—Spring-Reset Standard
H—Rolling Coulter
I—Spring and Lock Rod

*John Deere 3200 Series Six-Bottom Spring-Reset Drawn Moldboard Plow
(Trash Boards, Special Equipment)*



Preparing for Use

IMPORTANCE OF PROPER ADJUSTMENT

A well-adjusted plow pulls lighter; its furrow slices are uniform in width and depth; it covers trash; it leaves the soil in proper condition to be worked down into the best-type seedbed.

Improper adjustment results in rapid wear and possible breakage of parts, and inefficient operation.

PREPARING THE PLOW

Plow Bottoms

The polished surfaces of the plow bottoms have been painted with protective black paint.

In most cases it is not necessary to remove the black paint because it will wear off quickly upon contact with the soil. In those soils where the black paint will not wear off, remove with diesel fuel.

If the plow is not to be used immediately protect polished surfaces by applying a coat of John Deere Plow Bottom Black Paint. If the plow is to be put in storage for a considerable length of time, see page 27.

Bolts And Set Screws

Before starting to work with a new plow or one which has been stored, be sure all bolts and set screws are tight and all cotter pins spread to keep them from falling out. Be sure the bolts that hold the plow bottoms are drawn up tight.

Check for loose bolts, screws, or parts when lubricating the plow. Loose bolts are easily lost or cause excessive wear on parts, resulting in possible damage to the plow. See bolt torque chart, page 27.

Lubrication

Be sure plow has been properly lubricated. See Lubrication Charts on pages 25 and 26.

Tire Inflation

Inflate tires on plow to air pressures shown in the following chart.

Wheel	Recommended New Implement Or New Or Used Auto Tires	Inflation Pressure
Rear	11L x 14, 6-ply rating	36 psi (2.5 bar)
Land		
Furrow		

PREPARING AND ADJUSTING THE TRACTOR

For complete tractor operating instructions, refer to your tractor operator's manual.

Tire Inflation

Inflate the tractor tires as recommended in the tractor operator's manual.

Rockshaft Selector Lever

Set the rockshaft selector lever in "Zero", "D", or "Min" position depending upon your model tractor. This will lock out the tractor rockshaft hydraulic sensing system.

Rockshaft Height Stop Lock (4030, 4230, and 4430 Tractors)

If the tractor rockshaft is accidentally lowered with a Quik-Coupler hitch on the tractor, damage can occur to the 3200 Plow hitch when turning the tractor.

To prevent accidentally lowering the rockshaft while operating the plow, install AR60331 rockshaft height stop. Installation instructions are provided with the stop.

Rear Wheel Setting

Tractor Wheels in Furrow

Adjust rear wheels of the tractor equidistant from the center line of the tractor to inside edge of tire.

Tractor Wheels on the Land

Set the rear wheels equidistant from the center line of the tractor to insure maximum performance.

When operating the tractor with all wheels on the land, set the rear wheels (depending on size of plow) to leave at least four inches (100 mm) between the furrow wall and the outside edge of the right tractor tire.

NOTE: When tractor is equipped with dual rear wheels, set wheels in narrowest available setting. See your tractor operator's manual.

Front Wheel Setting

On wide-front-end tractors, to get proper field maneuverability when working with tractor wheel in the furrow, set the front wheels to conform to rear-wheel setting, center-to-center of tread, or set at least 2 inches (50 mm) wider than rear tires, measured from center of tractor to inside edge of tire.

Rear Wheel Weighting

Rear wheel weights may be necessary to eliminate excessive wheel slippage or for stability in rough or hillside fields. However, weights should not be added to the point where all slippage is eliminated. To do so would hinder maximum performance of the tractor.

See your tractor operator's manual.

Tractor Drawbar

When using a two-wheel drive tractor, set the drawbar in the high position. Pin the drawbar as instructed in "Horizontal Hitching" on page 10.

When using either a crawler or four-wheel drive tractor, set the drawbar as instructed in "Horizontal Hitching" on pages 10-12.

NOTE: After the drawbar attitude is determined, leave one hole open on each side of the drawbar to allow for some steering flexibility.

4-5

**FOR YOUR OWN
PROTECTION—
DON'T TAKE A CHANCE!**

X1287N

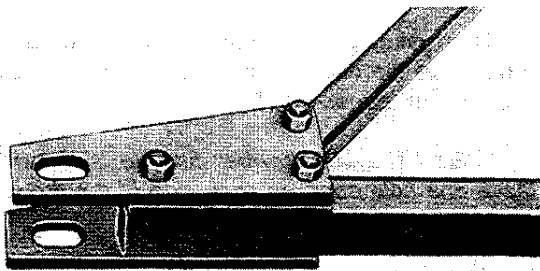


Attaching and Detaching

ATTACHING PLOW TO TRACTOR

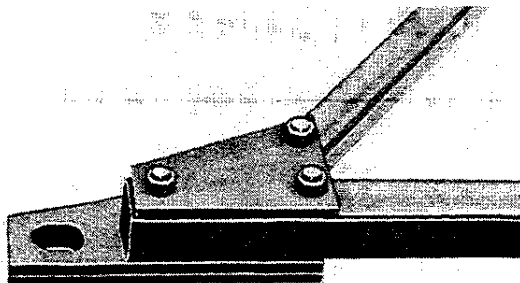
Hitching To Tractor

Before attaching the hitch drawbar to the tractor drawbar, be sure the hitch drawbar plates are positioned correctly for the type of tractor drawbar used. See following illustrations.



A12461

For Straight Drawbar Tractors



A12462

For Tractors with Hammerstrap Drawbars
or Tandem Plow Hitch

Attaching Hydraulic Hoses

Before attaching hoses, move remote cylinder operating lever back and forth several times with tractor engine stopped to relieve pressure in the tractor hydraulic system.

IMPORTANT: Wipe hose ends to remove any dirt before inserting in the breakaway couplers.

Install hoses in breakaway couplers so that cylinder will extend or retract as indicated by symbols on tractor console. Move the operating lever back and forth a few times to pressurize the cylinder.

NOTE: If the hoses have been disconnected from the hydraulic cylinder or if the cylinder has not been used before, all trapped air must be removed from the cylinder.

To remove trapped air, remove cylinder attaching pins and lay the cylinder across the plow frame with the oil outlets up to allow the trapped air to escape. Start the engine and operate the remote cylinder operating lever back and forth seven or eight times, allowing the full stroke each time.

Attach the hydraulic cylinder to the plow.

Checking Hydraulic System

After attaching plow to tractor for the first time, check all hydraulic connections and hoses for leaks.

⚠ CAUTION: Escaping hydraulic oil under pressure can have sufficient force to penetrate the skin, causing serious personal injury. Before disconnecting hoses, be sure to relieve all pressure. Before applying pressure to the system, be sure all connections are tight and that hoses are not damaged.

Hydraulic oil escaping from a very small hole can be almost invisible. Use a piece of cardboard or wood, rather than hands, to search for suspected leaks.

If injured by escaping hydraulic oil, see a doctor at once. Serious infection or reaction can develop if proper medical treatment is not administered immediately.

DETACHING PLOW FROM TRACTOR

⚠ CAUTION: When plow is not in use, either lower plow to ground so that it rests on its bottoms or lock in storage position with the furrow axle lift arm secured to the transport lock strap with the lock-pin. See illustration on page 19 under "Storage."

When detaching plow from the tractor, relieve hydraulic pressure by moving the remote cylinder operating lever back and forth with the tractor engine shut off.

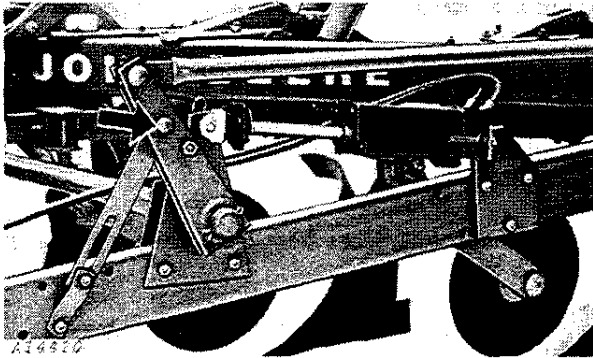
Disconnect all hoses from the breakaway couplers on the tractor.

Disconnect the plow from the tractor hitch.

**A Careful Operator
IS THE BEST INSURANCE
AGAINST AN ACCIDENT**



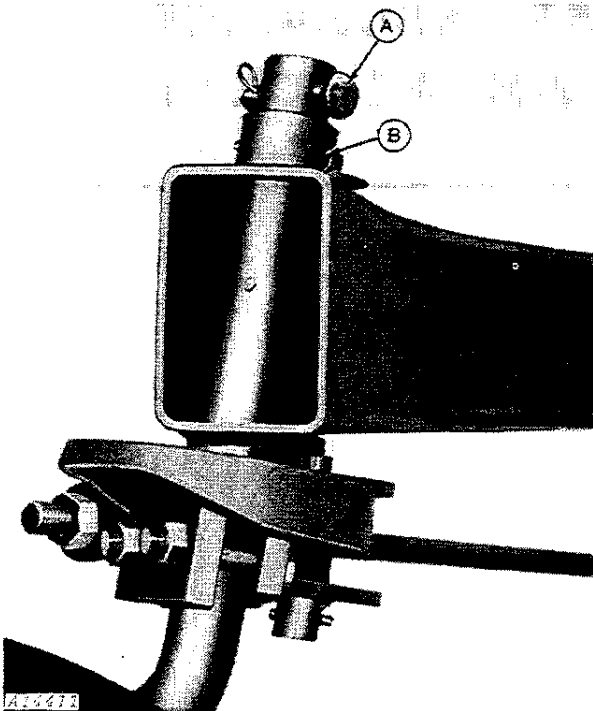
Transporting



Secure transport lock strap to furrow axle lift arms with lock pin (indicated by bold arrow) and spring locking pin.

8-9

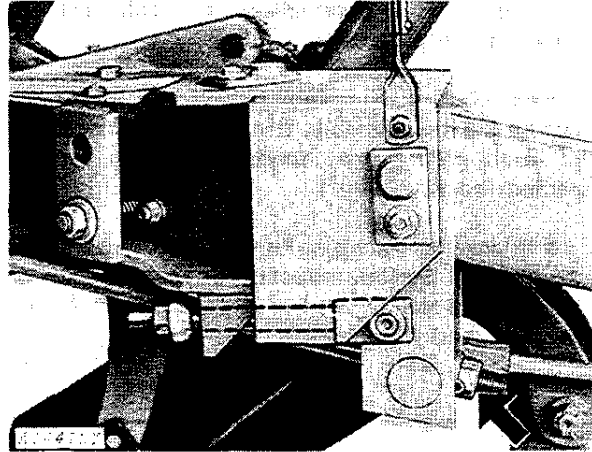
IMPORTANT: Transport lock strap must be secured before transporting plow. After securing lock strap with lock pin and spring locking pin, the remote cylinder can be removed if desired. To remove, retract cylinder 1 to 2 inches (25 mm to 50 mm) and remove from plow.



A—Axle Pin

B—Transport Position

Move axle pin (A) from rear axle and insert through rear wheel assembly and rear axle in transport position (B). Secure with spring locking pin.



To level the plow for transport, tighten the lock nut (indicated by bold arrow) on the rear lift rod to raise the rear of the plow. Loosen the nut to lower the rear of the plow.

CAUTION: These plows have been designed to be transported at a maximum speed of 20 mph (32 km/h). **DO NOT EXCEED.**

Never travel at any speed which does not permit adequate control of steering and stopping.

CAUTION: When transporting the plow on a road or highway at night or during the day, use accessory lights and devices for adequate warning to the operators of other vehicles. In this regard, check local governmental regulations for proper use. Various safety lights and devices are available from your John Deere dealer.

NOTE: Use of a safety chain is recommended when towing this implement on public roads. Tensile strength of the safety chain should be at least equal to the gross weight of the towed load. Safety chains are available from your John Deere dealer.

Thank you so much for reading.
Please click the “Buy Now!”
button below to download the
complete manual.



After you pay.

You can download the most
perfect and complete manual in
the world immediately.

Our support email:

ebooklibonline@outlook.com