

7100 FOLDING MAX-EMERGE® INTEGRAL PLANTERS



JOHN DEERE

OPERATORS MANUAL 7100 FOLDING MAX-EMERGE® INTEGRAL PLANTERS

OMA45613 E2 English

**PLOW & PLANTER WORKS
OMA45613 E2**

LITHO IN THE U.S.A.
ENGLISH



INTRODUCTION



This safety alert symbol identifies important safety messages in this manual. When you see this symbol, be alert to the possibility of personal injury and carefully read the message that follows.

“Right-hand” and “left-hand” sides are determined by facing in the direction the planter will travel when being transported.

Record your planter serial number in the space provided on page 250. Your dealer needs this information to give you prompt, efficient service.

This operator’s manual contains SI Metric equivalents which follow immediately after the U.S. customary units of measure.

7100 FOLDING MAX-EMERGE INTEGRAL PLANTER

TO THE DEALER

After the planter has been assembled, inspect it thoroughly to be sure it is functioning properly before delivering it to the customer. The following check list is a reminder of points to check. Check off each item as it is found satisfactory or after proper adjustment has been made.

The John Deere Delivery Receipt, when properly filled out and signed by the dealer and customer verifies that the predelivery and delivery services were satisfactorily performed. When delivering this planter, give the customer a copy of the delivery receipt and the operator's manual. Explain their purpose.

Be certain to retain your copy of the packing list for shipping bundle information.

PREDELIVERY CHECK LIST

The following check list is a reminder of points to inspect. Check off each item as it is found satisfactory or after proper adjustment is made.

- Attach planting units and attachments desired by customer.
- Lubricate the planter as shown on pages 98-102.
- Run in planter and make sure all working parts are moving freely, bolts are tight, and cotter pins are spread. See page 140.
- Inflate tires to 248 kPa (2.5 bar) (36 psi) of air pressure.
- Paint all parts scratched in shipment.
- This planter has been thoroughly checked and to the best of my knowledge is ready for delivery to the customer.

(Date Set Up)

(Signature of Set-Up Person)

OWNER REGISTER

Name _____

Post Office _____

County _____

City _____ State _____

Model _____

Serial No. _____

Date Sold _____

DELIVERY CHECK LIST

The following check list is a reminder of very important information which should be conveyed directly to the customer at the time the planter is delivered. Check off each item as it is fully explained to the customer.

- Advise the customer that the life expectancy of this or any other machine is dependent on regular lubrication as directed in the operator's manual.
- Tell the customer about all the safety precautions which must be observed while using this planter.
- When the planter is transported on a road or highway at night or during the day, accessory lights and devices should be used for adequate warning to the operators of other vehicles. In this regard, tell customer to check local governmental regulation.
- Give the operator's manual to the customer and explain all operating adjustments.
- To the best of my knowledge this planter has been delivered ready for field use and customer has been fully informed as to proper care and operation.

(Date Delivered)

(Signature of Delivery Person)



Contents

Page	
2-4	Safety
5	Identification View
6-10	Preparing the Tractor
11-17	Preparing the Planter
18-26	Attaching to Tractor
27-31	Transporting
32-56	Operating the Planter
57-89	Planting Rates
90-96	Trouble Shooting
97	Detaching from Tractor
98-102	Lubrication
103-121	Service
122-139	Attachments
140-246	Assembly
247-250	Specifications
251-253	Index



Safety

2-4

Operate the Planter Safely

Permit only one person, the operator, on the tractor platform while tractor and planter are in operation.

Be careful when operating on hillsides because the tractor may tip sideways if it strikes a hole, ditch or other irregularity.

Never ride or permit others to ride on the drawbar of the tractor or on the planter.

When planter is in a raised position for attaching transport straps, be sure rockshaft and remote cylinder operating levers are not touched by anyone.

Stay clear of folding sections during raising and lowering.

Always unfold planter wings before lowering planter to the ground or detaching planter from tractor.

Transport Safely

While transporting the planter on a public road, follow safety instructions outlined under "Transporting."

Use care when transporting across rough ground.

Service the Planter Safely

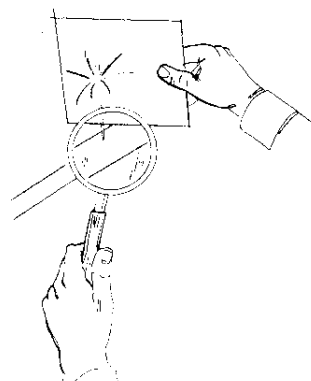
Never clean, lubricate or adjust the planter while it is in motion.

Always lower the planter to the ground when not in use. Whenever possible, perform service work and adjustments with the planter on the ground.

Avoid High-Pressure Hydraulic Fluid

Escaping fluid under pressure can have sufficient force to penetrate the skin, causing serious injury. Before disconnecting lines, be sure to relieve pressure. Before applying pressure, be sure connections are tight and lines, pipes and hoses are not damaged. Use a piece of cardboard or wood, rather than hands, to search for leaks.

If injured by escaping fluid, see a doctor at once. Serious infection or reaction can develop if proper medical treatment is not administered immediately.



H35336

2-4

H35336

Mount Tires Safely

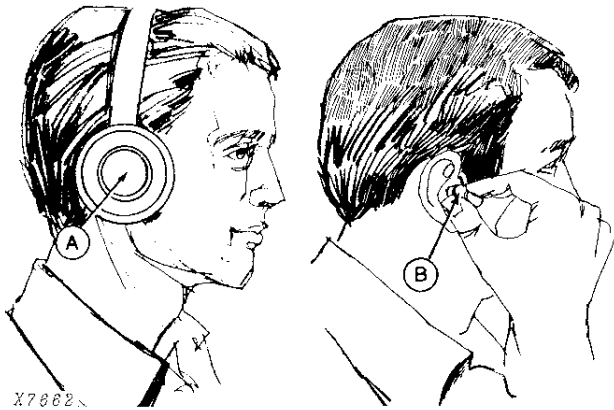
Failure to follow proper procedures when mounting a tire on a wheel or rim can produce an explosion which may result in serious injury or death. Do not attempt to mount a tire unless you have the proper equipment and experience to perform the job. Have it done by your John Deere dealer or a qualified tire repair service.

When sealing tire beads on rims, never exceed 35 psi or maximum inflation pressures specified by tire manufacturers for mounting tires. Inflation beyond this maximum pressure may break the bead, or even the rim, with dangerous explosive force. If both beads are not seated when the maximum recommended pressure is reached, deflate, reposition tire, relubricate bead, and reinflate.

Detailed agricultural tire mounting instructions, including necessary safety precautions, are contained in John Deere Fundamentals of Service (FOS) Manual 55, Tires and Tracks, available through your John Deere dealer. Such information is also available from the Rubber Manufacturers Association and from tire manufacturers.

Do Not Modify the Planter

Unauthorized modifications to the machine may impair the function and/or safety and affect machine life.



Protect Against Noise

Prolonged exposure to loud noise can cause impairment or loss of hearing.

Wear a suitable hearing protective device such as earmuffs (A) or earplugs (B) to protect against objectionable or uncomfortable loud noises.

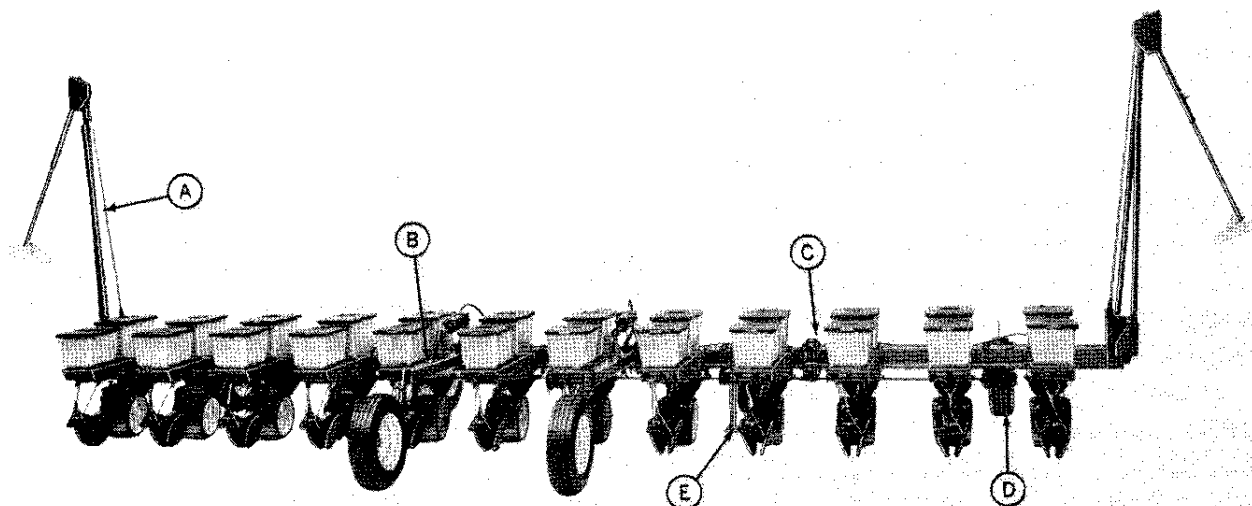
- A—Earmuffs
- B—Earplugs

Handle Chemicals Properly

Agricultural chemicals can be dangerous. Improper selection or use can injure persons, animals, plants, soils, or other property. BE SAFE: handle and apply with care. Follow instructions of the chemical manufacturer.



Identification View



A22866

A22866

A—Folding Hydraulic Marker

B—Lift-Assist Wheel

C—Folding Hinge

D—Drive-Gauge Wheel

E—Stand



Preparing the Tractor

HYDRAULIC PRESSURE

IMPORTANT: The operating pressure of your tractor must be a minimum of 13 790 kPa (137.9 bar) (2000 psi) for the planter hydraulic system to function properly.

The maximum operating pressure for the planter hydraulic system is 15 514 kPa (155.1 bar) (2250 psi). Exceeding this pressure is not recommended.

For complete tractor operating instructions, refer to your tractor operator's manual.

ROCKSHAFT SELECTOR LEVER

Set the tractor rockshaft selector lever in the "MIN" position.

TIRE INFLATION

Inflate the tractor tires as recommended in the tractor operator's manual.

REAR WHEEL TREAD

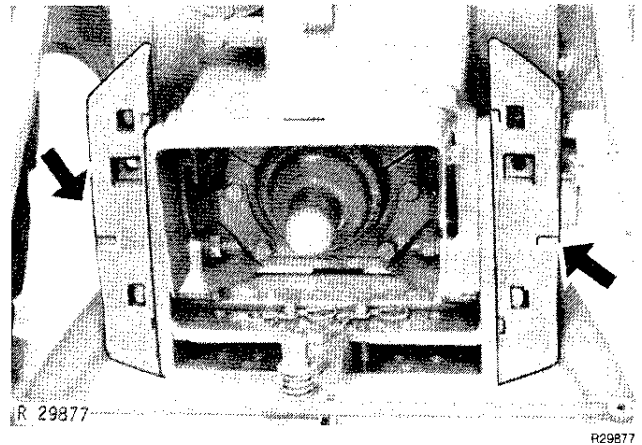
Set tractor tires (center-to-center of tread) at twice the row spacing.

FRONT WHEEL TREAD

On wide front end tractors, set front wheels to conform to rear wheel setting.

SWAY BLOCKS

Install sway blocks (bold arrows) in the lower position. This will prevent side sway when the planter is working.



6-10

*Sway Blocks Installed to Eliminate Side Sway
(4240 Tractor Illustrated)*

LIFT LINKS

Adjust the lift links for transport clearance and lateral float. See tractor operator's manual.

FRONT BALLAST INFORMATION

Install the proper amount of weight on the front of the tractor as recommended in your tractor operator's manual. For proper front end weighting, see the implement code table on page 8.



CAUTION: Front-end ballast may not always maintain the required stability if the tractor is driven too fast over rough ground with planter in raised position. Be safe and drive slowly under these conditions.

IMPLEMENT CODE TABLE

Size of Planter	Basic Code*	Add for Insecticide and/or Herbicide Attachments	Add for Furrowers, V-Wing, Coulters, or Tine-Tooth Tillage Attachments	Add for Markers
8-Row Wide				
(Integral - no lift assist wheels)	249	75	15	18
(Pivoting center mast - two lift-assist wheels)	180	49	10	12
12-Row Narrow				
(Integral - no lift assist wheels)	335	112	23	18
(Pivoting center mast - two-lift assist wheels)	244	73	15	12

*Basic machine code includes: planter frame, drive and gauge wheel assemblies, units with seed hoppers and parking stands.

6-10

Example		Your Code	
Step 1	180	Step 1	_____
Step 2	49	Step 2	_____
	10		
	12		
Step 3	251 (sub total)	Step 3	_____
Step 4		Step 4	_____
Step 5	(total)	Step 5	_____

Instructions

- Step 1 - Find your planter model in the IMPLEMENT CODE TABLE and enter its code on line 1, left.
- Step 2 - Enter an implement Code for each attachment on line 2.
- Step 3 - Add these codes to obtain Total Implement Code.
- Step 4 - Select additions or subtractions from tractor operator's manual.
- Step 5 - Refer to tractor operator's manual to determine required tractor front ballast.

Our example is an eight row wide planter with a pivoting center mast with two lift-assist wheels (180), insecticide (49), furrowers (10) and markers (12). Refer to your tractor operator's manual for steps 4 and 5 and for your recommended front end ballast.

IMPORTANT: Refer to tractor operator's manual:

1. If the total implement code exceeds the maximum implement code listed for a particular tractor model, the implement-attachment combination is not recommended for that tractor.
2. The total load on any tractor wheel due to the weight of the implement-attachment combination and tractor equipment, should not exceed the carrying capacity of the tractor tires.

CONVERTING TRACTOR HYDRAULIC SYSTEM FOR SINGLE LEVER CONTROL OF SEMI-INTEGRAL PLANTER



CAUTION: Escaping hydraulic oil under pressure can have sufficient force to penetrate the skin, causing serious personal injury. Before disconnecting lines, be sure to relieve all pressure. Before applying pressure to the system, be sure all connections are tight and that lines, pipes and hoses are not damaged. Hydraulic oil escaping from a very small hole can be almost invisible. Use a piece of cardboard or wood, rather than hands, to search for suspected leaks.

If injured by escaping hydraulic oil, see a doctor at once. Serious infection or reaction can develop if proper medical treatment is not administered immediately.

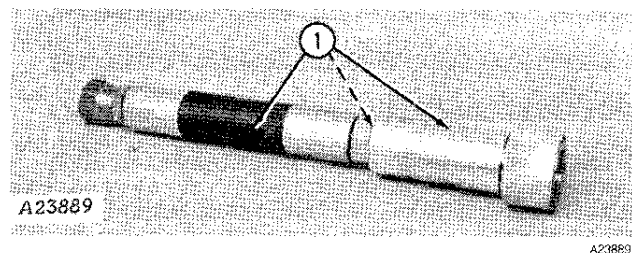
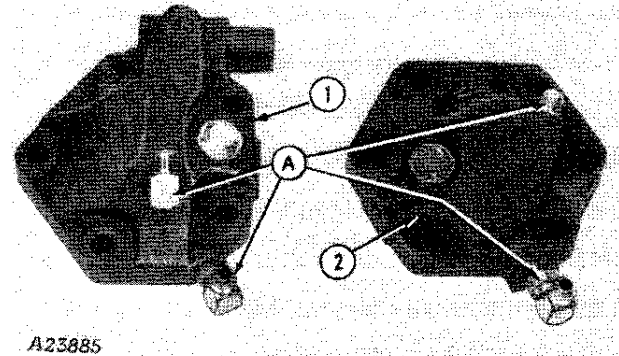
To convert your planter and tractor hydraulic systems to single lever control, you must first order BA23911 from your John Deere dealer. Also, your tractor's rockshaft piston cover must be equipped with two ports (A) shown at right.

If your tractor rockshaft piston cover is not equipped with the two ports illustrated, order the appropriate cover as indicated below.

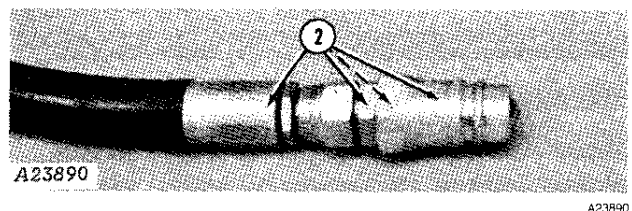
1. AR74187 cover for 4040, 4240, and 4440 Tractors.
2. R64459 cover for 4640 and 4840 Tractors.

Once you have obtained the required parts, use the assembly procedure outlined below and on page 10 to convert your tractor hydraulic system to single lever control.

1. Connect 7 in. (180 mm) hose, O-ring and female coupler together.



2. Connect 30 in. (760 mm) hose, adapter, O-ring and male coupler together.



Thank you so much for reading.
Please click the “Buy Now!”
button below to download the
complete manual.



After you pay.

You can download the most
perfect and complete manual in
the world immediately.

Our support email:

ebooklibonline@outlook.com