

890 SERIES SIDE-DELIVERY RAKES



OPERATORS MANUAL 890 SERIES SIDE-DELIVERY RAKES

OME16343 L3 English

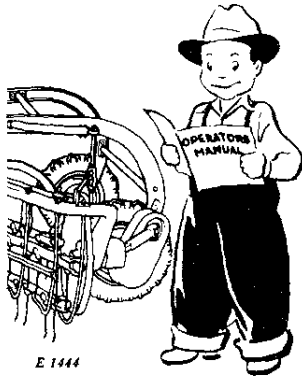
OME16343 L3

LITHO IN THE U.S.A.
ENGLISH

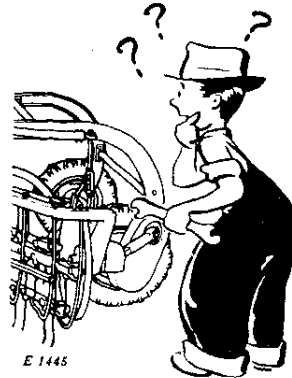




introduction



There is a
RIGHT WAY
←
and a
WRONG WAY
→
to do
everything



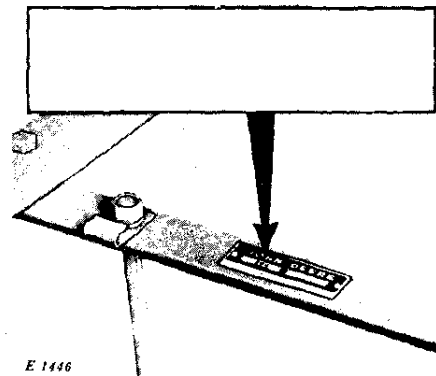
Your new John Deere Side-Delivery Rake is a dependable machine. With proper care and operation you can expect to receive the service and long life designed and built into it. Like any precision machine your rake will require some attention at regular intervals. Use your manual as a guide to service your machine the **RIGHT WAY**.

If you find yourself in need of additional information or special servicing not covered in this manual, see your John Deere dealer. He is in a position to answer your questions for you.

When in need of parts either to replace worn parts or to make emergency repairs, see your local John Deere dealer.

When ordering parts, give your dealer the serial number of your rake. This information will help him give you prompt and efficient service.

The serial number of your rake is located on the front end of the reel frame. Record it in the space provided in the picture below.





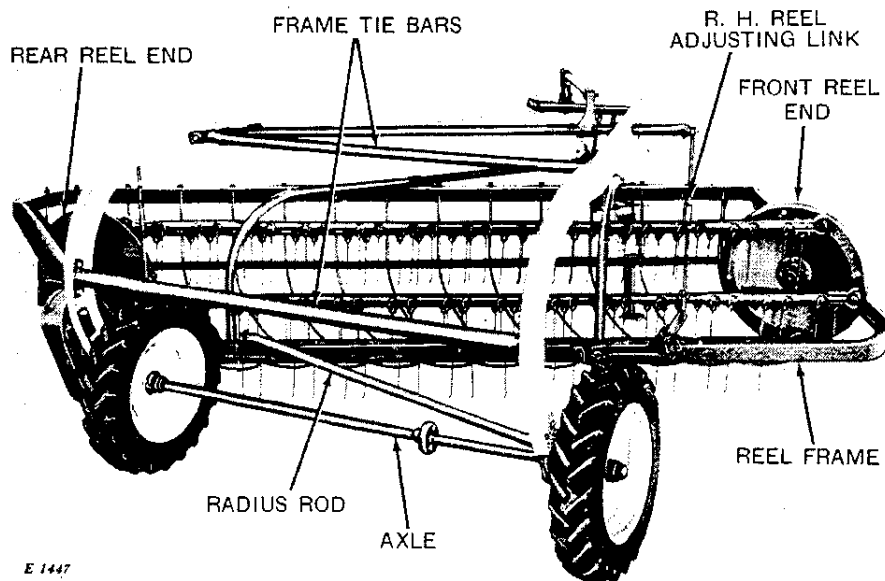
contents

	Page
SPECIFICATIONS	2-3
OPERATION	4-11
Before Operation	4
Operating Adjustments	4
Hitching	4
Jack Stand	5
Reel Height	6
Tooth Pitch	6-7
Reel Leveling	7
Engaging Drive	8
Drive Chain Tension	9
Transporting	10
Safety Suggestions	10
Making Hay the John Deere Way	11
LUBRICATION	12
ATTACHMENTS	13-19
Dual Wheel	13
Stripper-Support	13
Antifriction Tooth Bar Bearing	14
Fifth Tooth Bar	14
Reel Skids	14
Stripper Modeling Tool	15
Slow Reel Speed Sprocket	15
Front Caster Wheel	16
Hitch Extension	16
Lighting	16
Automatic Clutch	17-18
Remote Hydraulic Cylinder, Adapting Parts, Hoses	19
ASSEMBLY	20-28



specifications

Over-all height of rake	4 Ft. 6 In.
Over-all width of rake (894A)	9 Ft. 9 In.
(896A)	10 Ft. 10 In.
Over-all length of rake (894A)	10 Ft.
(896A)	11 Ft. 1 In.
Length of reel (894A)	10 Ft. 9 In.
(896A)	12 Ft. 2 In.
Operating speed	Up to 7 miles per hour
Reel speed: 11-tooth sprocket at 5 mph	102 rpm
13-tooth sprocket at 5 mph	86 rpm
Number of tooth bars	4 or 5



E 1447

Rear view of John Deere 896A Side-Delivery Rake



operation

Before operation

On the following pages you will find information on how to operate your John Deere Side-Delivery Rake to the best advantage. If you carefully read and use this information, your rake will give years of dependable and economical service.

John Deere 890 Series Side-Delivery Rakes are modern ground-driven rakes designed for today's high speed farming methods. They are big-capacity rakes with right angle reel to give you maximum raking speed with a minimum handling of your crop.

Side-delivery rakes, once they are adjusted to suit field conditions, are easy to operate. The only adjustments required for satisfactory operation of this rake are the height, and the pitch of the teeth in relation to the ground.

When starting a new side-delivery rake, disengage the hand clutches. Turn the reel by hand to be sure it revolves freely and the teeth do not strike the strippers. Engage the hand clutches. Jack up the rake and turn the wheels by hand to see that the tooth pipes run freely.

An occasional thorough inspection for loose nuts and worn parts will add to the efficiency of your rake.

The turning radius of the tractor and rake combination can be reduced by moving the rear tractor wheels to a narrow setting. This will make shorter turns possible and prevent

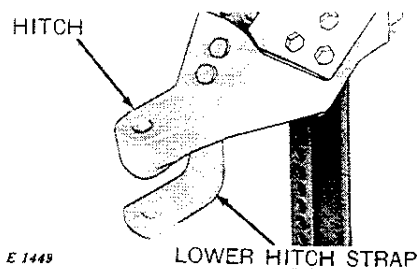
tractor tire damage resulting from the rake frame striking the tires on extremely short turns.

Before starting the rake, make sure that all bolts are tight, cotter pins are spread, and the machine has been properly assembled.

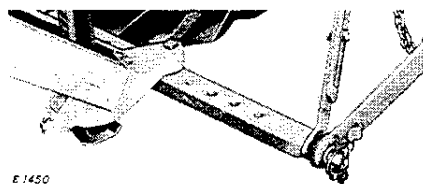
Be sure rake has been lubricated as shown in lubrication chart (page 12).

Operating adjustments

Hitching

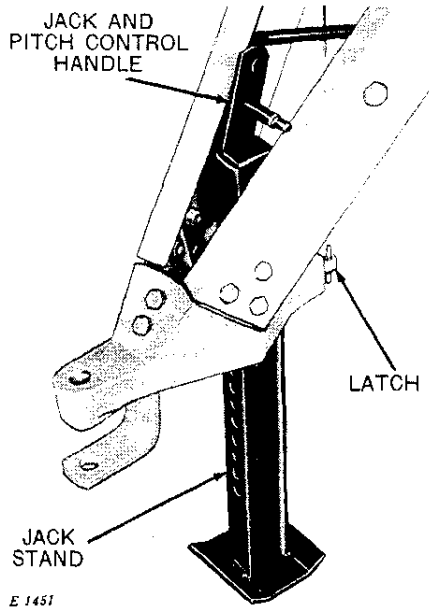


When attaching the rake to the tractor, set the tractor drawbar to meet ASAE-SAE standards of 13 to 17 inches from the ground.



Remove the lower hitch strap to allow unrestricted turning when using your rake on flat drawbars such as the Ford or Ferguson type.

Jack stand



E 1451

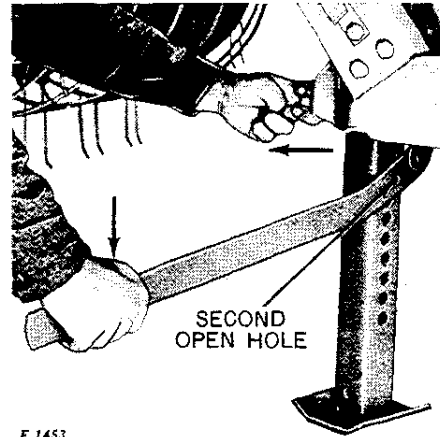
During operating or transporting, the jack stand (located in the hitch) is held firmly out of the way by a spring-loaded latch.

NOTE: Seat the latch in one of the five bottom holes to lock the stand in raised position. Operate the jack stand as follows:

Raising hitch

1. Place the pin on the jack handle completely through the first open hole in the front of the jack stand which is immediately under the jack stand mounting.
2. Push down on the jack handle to raise the hitch.
3. Repeat steps 1 and 2 to raise the hitch higher.

Lowering hitch



E 1453

1. Place the pin on the jack handle completely through the second open hole below the jack mounting in the front of the jack.

2. Push down on the jack handle, then pull out the latch in the rear of the jack stand—relax the pressure on the jack handle and release the latch.

3. Repeat steps 1 and 2 to drop the hitch lower.

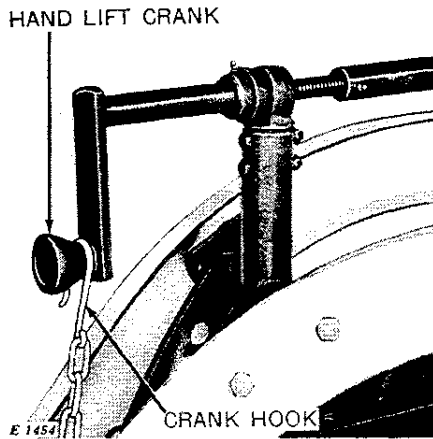
Replace the jack handle in the top of the jack stand. (The jack handle is also used as a lever to change the pitch setting of the teeth.)

NOTE: It is not necessary to use the jack handle after weight of rake is removed from the jack. The jack may be raised by pulling the latch and lifting the jack by hand. The jack will lower itself to the ground by pulling the latch.

6 operation

Reel height

Hand lift crank



The hand lift crank lowers the reel into operating position or raises the reel for transporting. Turn the crank clockwise to raise the reel or counter-clockwise to lower the reel.

The teeth can be adjusted below the level of the ground for raking peanuts or beans. When raking hay crops, set the teeth as far as possible from the ground, but low enough to allow the teeth to pick up the hay cleanly. When the crank is not being used, secure it with the crank hook.

Remote hydraulic cylinder

SINGLE-ACTING CYLINDER

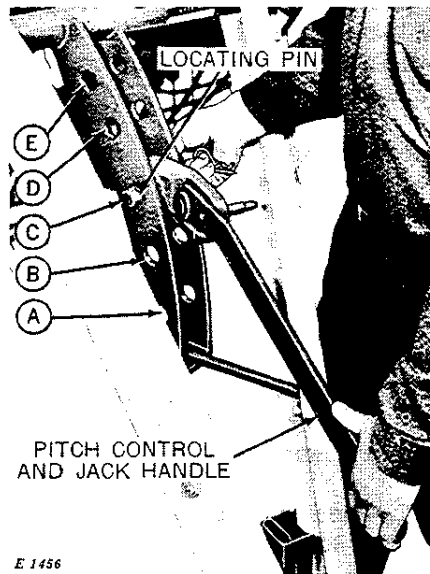


A single-acting remote hydraulic cylinder and adapter is available to control the reel height from the tractor seat. The cylinder adapter also may be used with the double-acting remote cylinder on John Deere tractors or any other tractor equipped with a hydraulic system and remote cylinder that conforms with ASAE-SAE standards.

NOTE: Refer to your tractor operator's manual for correct information regarding the hookup of the remote hydraulic cylinder oil lines.

Do not remove the hand lift crank from the rake when using a remote hydraulic cylinder. The hand lift crank will act as a stop for maintaining the correct reel operating height.

Tooth pitch



The position of the pitch control yoke regulates the angular relationship of the spring teeth to the surface of the ground. There are five different settings to control the pitch

Thank you so much for reading.
Please click the “Buy Now!”
button below to download the
complete manual.



After you pay.

You can download the most
perfect and complete manual in
the world immediately.

Our support email:

ebooklibonline@outlook.com