



# 65 COMBINE



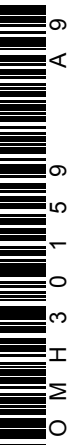
JOHN DEERE

## OPERATORS MANUAL 65 COMBINE

OMH30159 A9 English

**OMH30159 A9**

LITHO IN THE U.S.A.  
ENGLISH



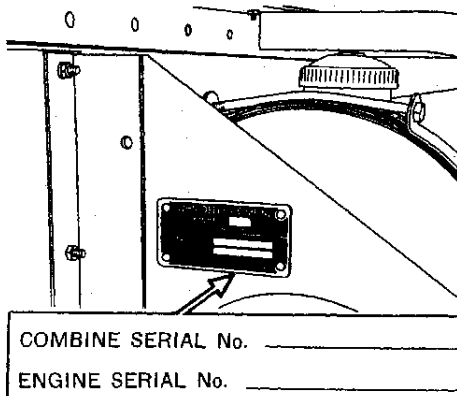
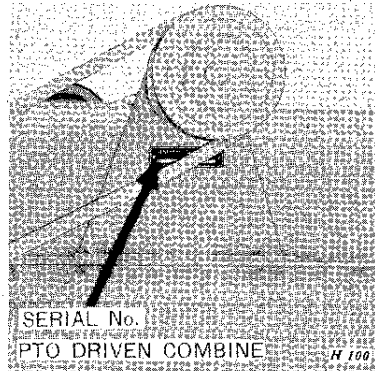
## TO THE PURCHASER

This Operator's Manual has been written and illustrated to provide you with the needed information regarding lubrication, operation, adjustments, and care of the combine. **Study this manual carefully—keep it in a handy place and refer to it often.**

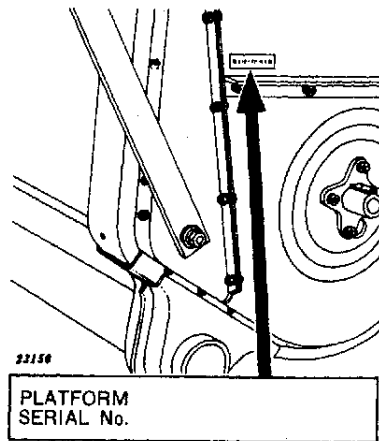
**Location Reference.** "Right-hand" and "left-hand" sides are determined by facing in the direction the combine will travel when in use.

**Engine Reference Only.** Timing gear end of engine is referred to as the "front," flywheel end as the "rear."

If you have an engine-driven machine, the serial numbers of your combine and engine are stamped on a plate on the fuel tank rear support bracket. If your combine is PTO driven, the combine serial number plate is on the grain tank unloading auger jackshaft left-hand support bracket. The cutting platform serial number plate is located on the right-hand side of the cutting platform. For handy reference later, write these serial numbers now in the spaces provided.



38283



22150

## TABLE OF CONTENTS

	<i>Page</i>
SERIAL NUMBERS.....	Inside Front Cover
GENERAL VIEW OF COMBINE.....	3
SPECIFICATIONS.....	4-5
COMBINE CONTROLS.....	6-7
LUBRICATION.....	8-28
OPERATION.....	30
Breaking in the New Combine.....	30
Engine Break-In.....	30
Before-Operation Checks and Adjustments.....	31
Starting the Engine.....	31
Stopping the Engine.....	32
Starting the Combine.....	32
Selecting Proper Ground Speed.....	32
Cutting Platform Height.....	32
Speed of Various Units.....	33
Basic Settings Made at the Factory.....	34
Slip Clutches.....	35
Electro-Magnetic Throw-Out Clutch.....	36-37
Cross-Sectional View of Combine.....	38-39
Fundamentals of Combine Harvesting.....	40
Operating Suggestions.....	41
Proper Preparation of Field.....	42
Operation in Weedy Conditions.....	43
Height of Cut.....	43
Suggested Settings for Combining Various Crops.....	44-49
Safety Suggestions.....	50-51
Transporting.....	52
Hooking Up to Tractor.....	53
Adjustable Parking Stand.....	54
Cold Weather Operation.....	55
Care When the Season Is Over.....	56
Care at the Beginning of Next Season.....	57
ADJUSTMENTS AND SERVICE.....	58-118
Inspection Doors and Parts.....	58
Reel.....	59-65
Cutter Bar.....	66
Platform Auger.....	70-71
Feeder Conveyor.....	72
Belt Pickup.....	73
Cylinder and Concave.....	75-86
Feed Rolls Attachment.....	87-89
Beater Behind the Cylinder.....	89
Cleaning Fan.....	90-93
Elevators.....	94
Shoe Pitmans.....	95
Grain Conveyor.....	96
Straw Walkers.....	97
Chaffer and Sieve.....	98-101
Special Equipment for Combining Various Crops.....	102-104
Shoe Dividers.....	103
ScourKleen, Hart.....	103

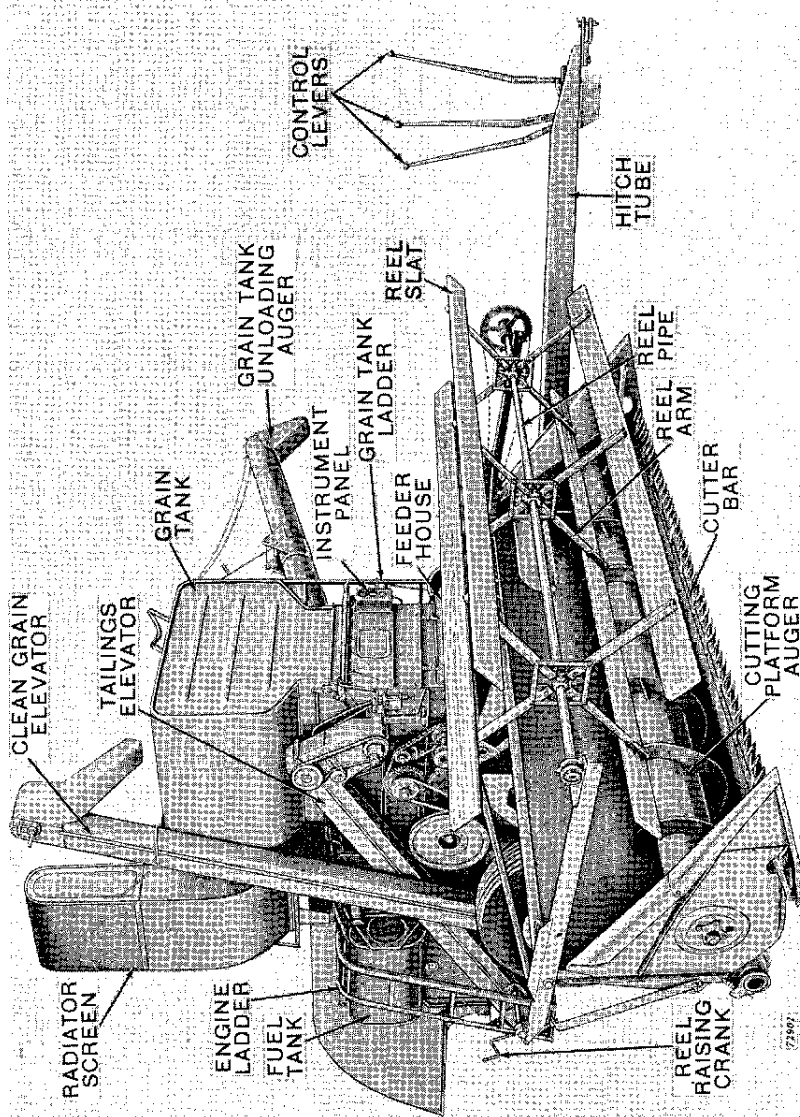
## TABLE OF CONTENTS—Continued

	<i>Page</i>
ADJUSTMENTS AND SERVICE—Continued	
Straw Spreader.....	104
Grain Tank Unloading Auger Drive.....	105
Separator Drive Tightener Pulley and Throttle Control.....	106-107
Hydraulic System.....	108
Care of Pneumatic Tires.....	109
Care of Chains.....	110
Care of V-Belts.....	111
Drive Chains and V-Belt Charts.....	112-113
Service Chart.....	114-118
ENGINE SERVICE.....	119-133
Fuel System.....	119-120
Carburetor.....	120-121
Governor.....	122
Wiring Diagram.....	123
Ignition System.....	124-126
Starting System.....	127
Generator.....	128
Starting Motor.....	129
Cooling System.....	130-131
Radiator and Radiator Screen.....	132
Valve Tappet Adjustment.....	133
Engine Removal.....	133
Service Chart.....	134
INDEX.....	138-142

### IMPORTANT

Make this manual your guide and adviser and do what it recommends, regardless of what may have been your practice with other makes of combines, or the suggestions that may be made to you by well-meaning friends or neighbors.

When using this combine with special attachments, special servicing of the attachments may be required. This information will be given to you in the instruction book accompanying the attachment.



Complete View of John Deere Engine-Driven 65 Combine

Thank you so much for reading.  
Please click the “Buy Now!”  
button below to download the  
complete manual.



After you pay.

You can download the most  
perfect and complete manual in  
the world immediately.

Our support email:

[ebooklibonline@outlook.com](mailto:ebooklibonline@outlook.com)