

**JOHN DEERE NO. 12-A  
STRAIGHT-THROUGH  
COMBINE (66-INCH CUT)  
(SERIAL NO. 12-107212  
AND UP)**



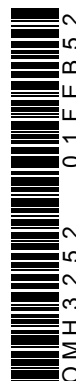
**OPERATORS MANUAL**

JOHN DEERE NO. 12-A STRAIGHT-THROUGH  
COMBINE (66-INCH CUT) (SERIAL NO. 12-107212  
AND UP)

OMH3252 (01FEB52) English

**OMH3252 (01FEB52)**

LITHO IN THE U.S.A.  
ENGLISH



## FOREWORD

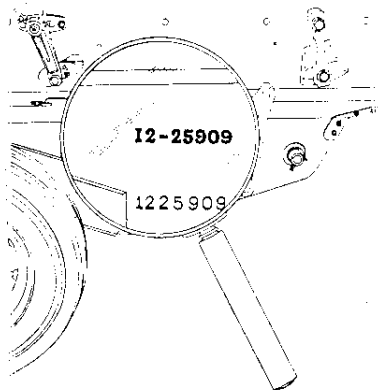
The purpose of this book is to supply useful harvesting information to owners and operators of John Deere No. 12-A "Straight-Through" Combines. This information should help in choosing the proper adjustment and special equipment required to meet each harvesting condition.

A Combine must be built to harvest a wide range of conditions. Average conditions can be handled by the standard equipment with which combine is shipped. However, unusual conditions may require some special equipment.

In addition to the standard equipment which comes with machine and the special attachments that are available at extra cost, it is sometimes necessary and advisable to make certain other equipment in the field, in order for machine to handle some unusual or purely local condition. This book contains suggestions for such special equipment. It must, of course be understood that these are only suggestions to help meet unusual situations, and therefore, they should be used only after trying all normal adjustments and recommended equipment.

Conditions vary, not only from year to year and section to section, but also from field to field. It is, therefore, obviously impossible to give definite rules for combine operation that will directly apply in every case. It is entirely possible that there are several solutions to any particular threshing problem. For this reason, we give numerous suggestions, some of which may conflict, and you can use the one that best suits your needs.

It is often necessary to settle on a compromise of adjustments to save the maximum amount of the crop. To illustrate, in a trashy condition where a large volume of straw stems, weed joints, etc., is being delivered to the cleaning unit along with the grain, it is advisable to open the chaffer and sieve a little wider and accept a slightly dirtier sample rather than to close the sieves and receive a cleaner sample but allow too much grain to pass out of machine with the blanket of trash.



## SERIAL NUMBER

The Serial Number of your  
Combine is.....

You will find the serial number stencilled and stamped on the L. H. side of separator just above the clean grain auger housing. Write the number in the above space.

Date Purchased....., 19....

## TABLE OF CONTENTS

	<i>Page</i>
Auger Housing, Perforated Connections.....	68
Beater, Behind Cylinder.....	51-54
Beater, Replacing Shaft.....	54
Beater Speed Adjustment.....	16, 51
Beater Teeth Covers.....	16, 51-52
Beater Teeth Covers, To Remove.....	52
Beater, To Remove.....	53
Beater, Two Operating Positions.....	52-53
Beater Wrapping.....	138
Breaking in the New Combine.....	12
Canvases, Care of.....	34
Canvases, Catching or Stopping.....	133
Canvases, Operating Suggestions.....	35
Canvases, To Shorten.....	35
Canvas Rollers Binding.....	133
Chaffer, Adjustable.....	62
Chaffer, Adjustable, To Remove.....	62
Chaffer Extension, No-Choke.....	66
Chaffer Setting.....	16
Chains.....	75
Chart, Speeds of Various Units.....	70
Clean Grain Elevator.....	67-68
Cleaning Fan.....	60-61
Cleaning Fan Blast Adjustment.....	60
Cleaning Fan Sheaves, Regular and Special.....	60
Cleaning Fan Windboard.....	61
Cleaning Fan Valves.....	61
Cleaning Shoe.....	62-66
Cleaning Shoe, Dividers for Sloping Land.....	65
Cleaning Shoe, Grain "Going Over".....	140
Cleaning Shoe Overloaded.....	139-140
Cleaning Shoe, Special Equipment.....	65-66
Cleaning Shoe, To Remove.....	63-64
Cleaning Troubles.....	139-140
Cleaning Units.....	59
Concave Rasp Bar.....	47
Conveyor Chain Below Straw Rack, Care of.....	58
Combine Operating Adjustments.....	20
Combining Various Crops.....	82-131
Alfalfa.....	96-101
Barley.....	82-84
Barley, Malting.....	84
Beans, Baby Lima.....	88-89
Beans, Black-Eye.....	89

## TABLE OF CONTENTS—Continued

	<i>Page</i>
<b>Combining Various Crops—Continued</b>	
Beans, Edible.....	85-91
Beans, Great Northern.....	89
Beans, Kidney.....	90
Beans, Navy.....	90
Beans, Pinto.....	90-91
Beans, Soy.....	92-95
Beans, White Pea.....	90
Buckwheat.....	95-96
Clover.....	96-104
Clover, Alsike.....	102
Clover, Big English.....	102
Clover, Crimson.....	102-103
Clover, Dutch.....	102
Clover, Fenugreek.....	103
Clover, Hop.....	103
Clover, Red.....	103
Clover, Sweet.....	104
Clover, Yellow Blossom.....	104
Crotalaria.....	104-106
Flax.....	106-110
Grass, Blue.....	114
Grass, Brome.....	114-115
Grass, Canary.....	115
Grass, Carpet.....	115
Grass, Crested Wheat.....	115-116
Grass, Fescue.....	116
Grass, Johnson.....	116
Grass, Millet.....	116
Grass, Orchard.....	117
Grass, Red Top.....	117
Grass, Rhodes.....	117
Grass, Rye.....	117-118
Grass, Seeds.....	110-118
Lespedeza.....	118-121
Millet, Hog.....	118
Mustard.....	121-122
Oats.....	123
Peas, Edible.....	85-91
Peas, Field.....	91
Peas, Scotch Green.....	91
Peas, Willets Wonder.....	91

## TABLE OF CONTENTS—Continued

	<i>Page</i>
Combining Various Crops—Continued	
Proso.....	118
Radish Seed.....	123-124
Rye.....	124
Sorghums.....	124-127
Timothy.....	128-129
Wheat.....	130-131
Crops, Down and Tangled.....	135
Cross-Sectional View.....	18-19
Cutter Bar, Care of.....	29-31
Cutter Bar and Dividers.....	28-33
Cutter Bar Losses.....	134-135
Cutter Bar, Special Equipment.....	33
Cutting Troubles.....	133-135
Cylinder.....	37-46
Cylinder, Back Feeding.....	136-137
Cylinder, Cracking Grain.....	137-138
Cylinder, Extra Channel Bars.....	46
Cylinder, Filler Blocks for Back Side of Rasp Bars.....	45
Cylinder Rasp Bars.....	42
Cylinder, Slugging of.....	136
Cylinder, Slow Speed Attachment.....	45
Cylinder, To Remove.....	43-44
Cylinder and Concave Spacing.....	16, 41-42
Cylinder Speeds.....	16, 37-40
Cylinder, Special Equipment.....	45-46
Deflector Curtains.....	55
Deflector Curtains, Operating Suggestions.....	55
Deflector Curtains, Two Positions.....	55
Divider.....	28-33
Divider, Extension.....	33
Divider, Inside Loop.....	32
Divider, Runner Shoe for Outside Divider.....	119
Divider, Special Equipment.....	32-33
Factory Settings.....	16
Feeder Canvas.....	36
Feeder Throat Adjustment.....	36
Feeding Troubles.....	135-136
Field Operation.....	78-80

Thank you so much for reading.  
Please click the “Buy Now!”  
button below to download the  
complete manual.



After you pay.

You can download the most  
perfect and complete manual in  
the world immediately.

Our support email:

[ebooklibonline@outlook.com](mailto:ebooklibonline@outlook.com)