

SIDEHILL 6600 COMBINE



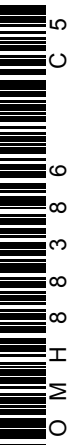
JOHN DEERE

OPERATORS MANUAL SIDEHILL 6600 COMBINE

OMH88386 C5 English

OMH88386 C5


LITHO IN THE U.S.A.
ENGLISH





To the Purchaser

This new combine was carefully designed and manufactured to give years of dependable service. To keep it running efficiently, read the instructions in this operator's manual. Each section is clearly identified so you can easily find the information you need—whether it is operation, lubrication, or service. Read the Table of Contents to learn where each section is located. Use the alphabetical index for fast reference.

 This safety alert symbol identifies important safety messages in this manual. When you see this symbol, be alert to the possibility of personal injury and carefully read the message that follows.

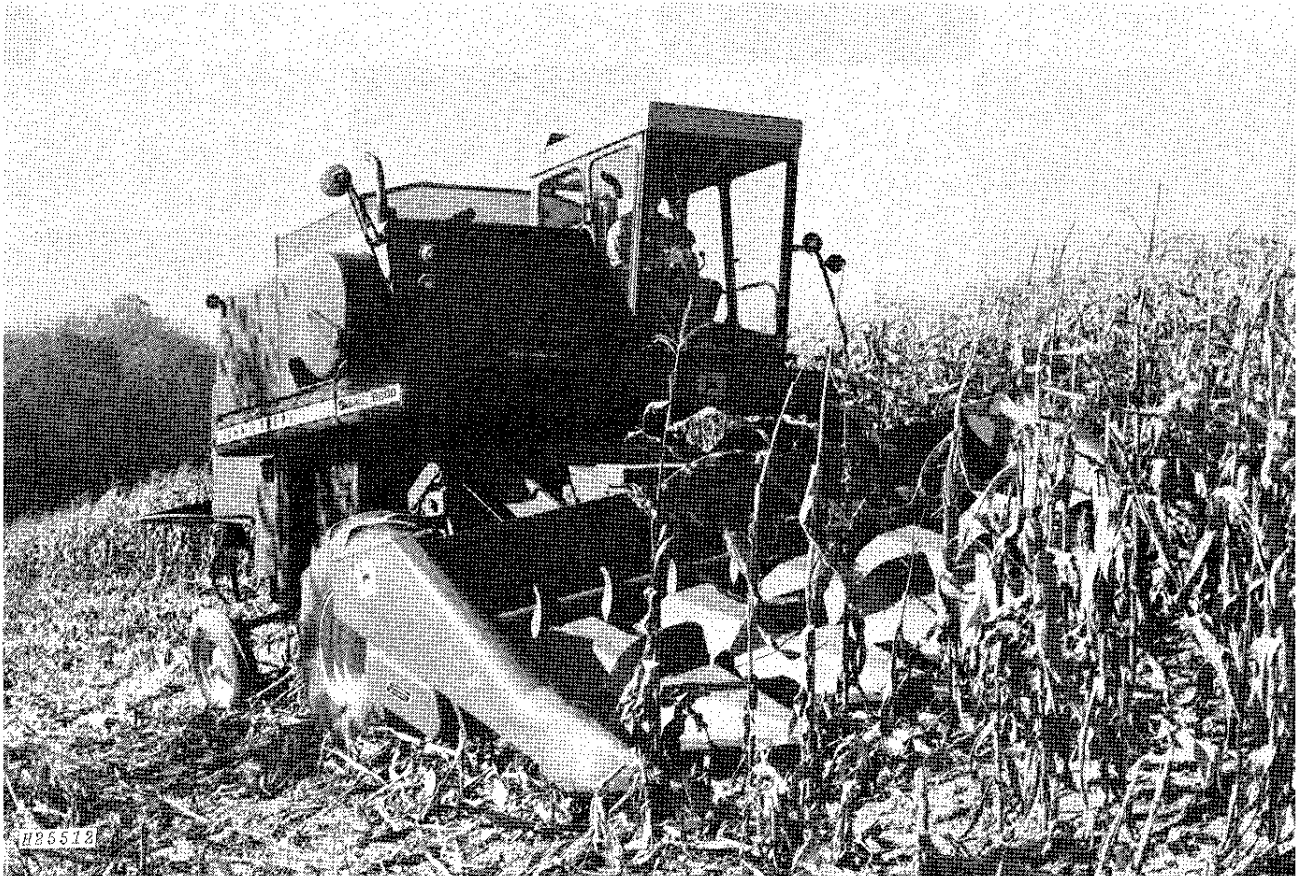
Your operator's manual contains SI Metric equivalents which follow immediately after the U.S. customary units of measure.

Study this manual carefully and keep it handy with your regular combine operator's manual, in a safe place, for future reference.

"Right-hand" and "left-hand" sides are determined by facing in the direction the combine will travel when in use.

If your combine requires replacement parts, go to your John Deere dealer where you can obtain Genuine John Deere parts—accept no substitutes.

The warranty on this combine appears on your copy of the purchase order which you should have received from your dealer when you purchased the combine.





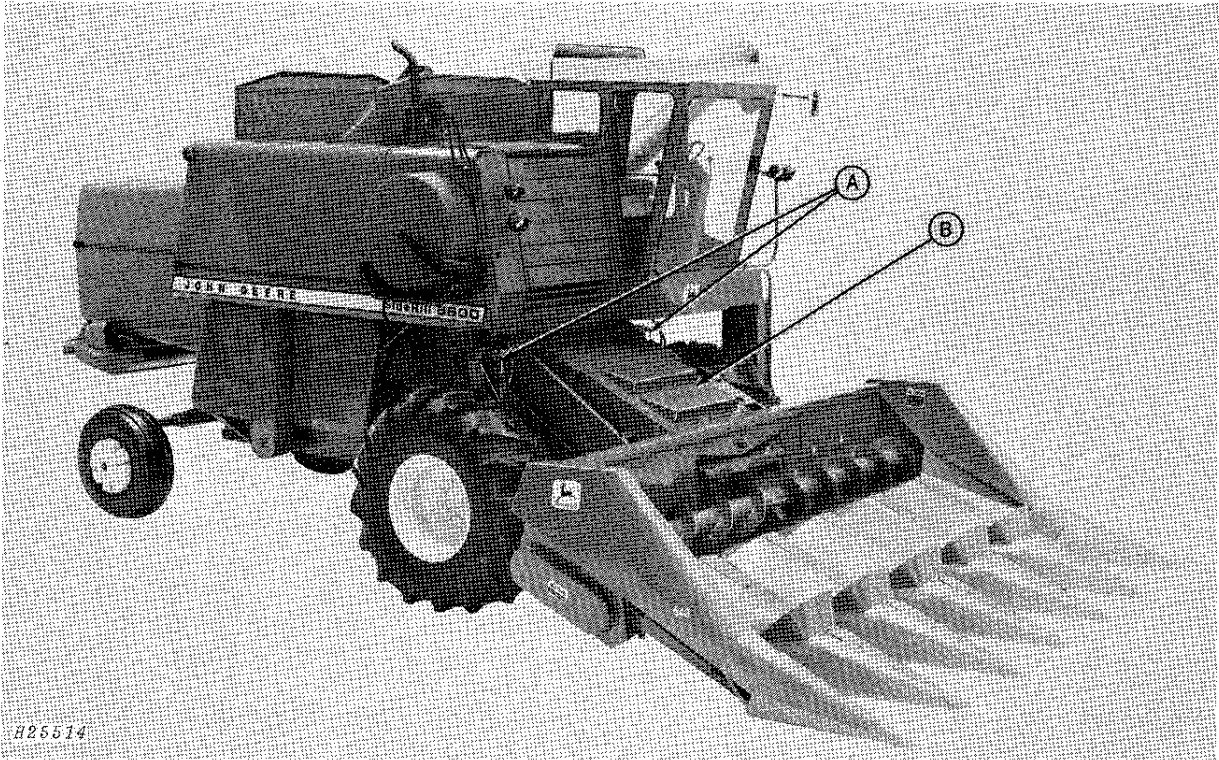
Contents

	Page		Page
SAFETY SUGGESTIONS	3	Adjusting Front Feeder House	
OPERATION	4-9	Paddle Height	18
Leveling System	4	Adjusting Front Feeder House	
Electrical System	5	Paddle Stripper	19
Hydraulic System	6	Replacing Feeder House Paddles	19
Electrical and Hydraulic		Replacing Feeder House Shearbolt	20
Systems Diagram	7	Adjusting Upper Feeder House	
Paddle Feeder House	8	Drive Belt	20
Variable Speed Feeder House		Adjusting Variable Drive	
Control Lever	8	Middle Belt	20
Operating Speeds	9	Adjusting Variable Drive	
LUBRICATION AND PERIODIC SERVICE ..	10-13	Lower Belts	21
SERVICE	14-21	Leveling Platform, Corn Head,	
Leveling System	14	or Row Crop Head	21
Adjusting Tilt Limit Switches	14	TROUBLE SHOOTING	22-24
Adjusting Leveling Sensing Control Box ...	15	INSTALLATION	
Fuse	15	Attaching Corn Head or Row Crop Head	25
Leveling System Wiring Diagram	16	Attaching Cutting Platform	26
Feeder House	17	SPECIFICATIONS	27-28
Hydraulic Cylinder Safety Stop	17	Capacities	27
Inspection Doors	17	Engine	27
Adjusting Feeder House Speeds	18	Dimensions	28
Adjusting Feeder House			
Drive Chains	18		

IMPORTANT

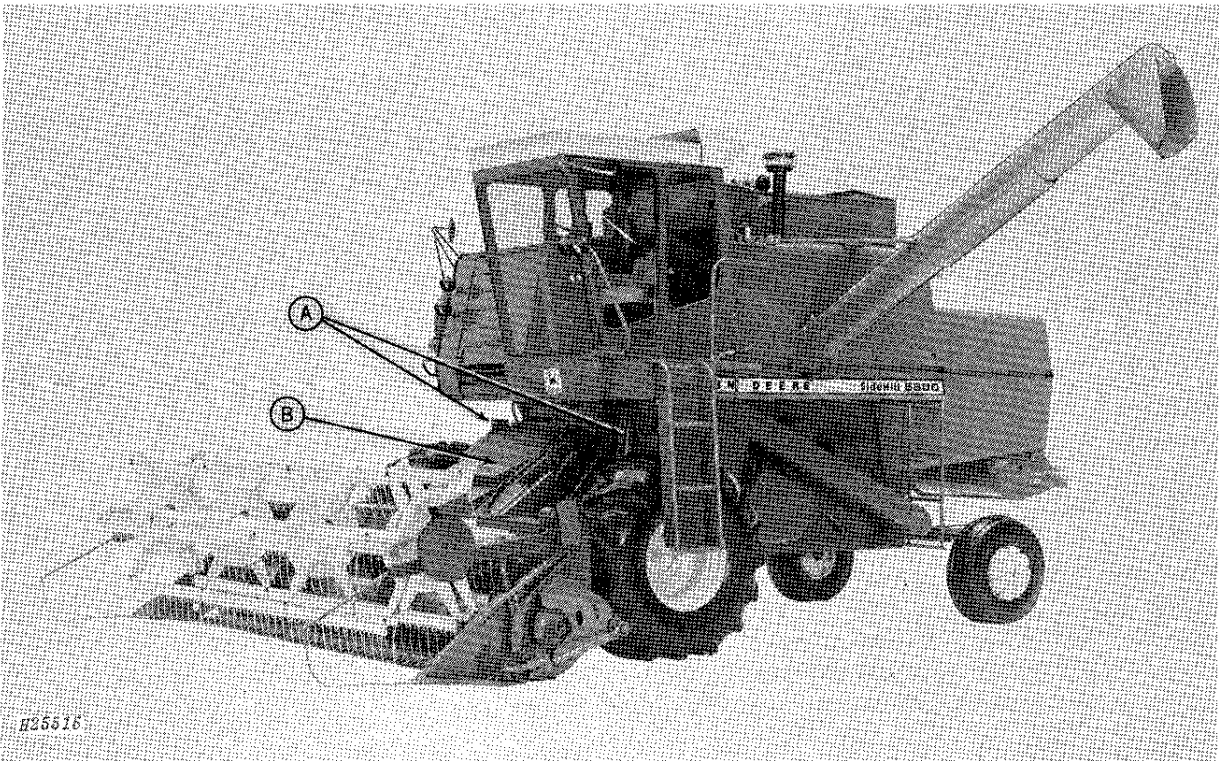
This operator's manual covers only information pertaining to the leveling system, paddle feeder house, and specifications for the SideHill 6600 Combine.

Refer to your operator's manual for 6600 and 7700 Combines for information covering all the other areas of the SideHill 6600 Combine.



A—Leveling Cylinders B—Paddle Feeder House

John Deere SideHill 6600 Combine with Corn Head




A—Leveling Cylinders B—Paddle Feeder House

John Deere SideHill 6600 Combine with Cutting Platform



Safety Suggestions

 The safety of the operator was one of the prime considerations in the minds of John Deere engineers when this combine was designed. Shielding, simple adjustments, and other safety features were built into the combine whenever possible.

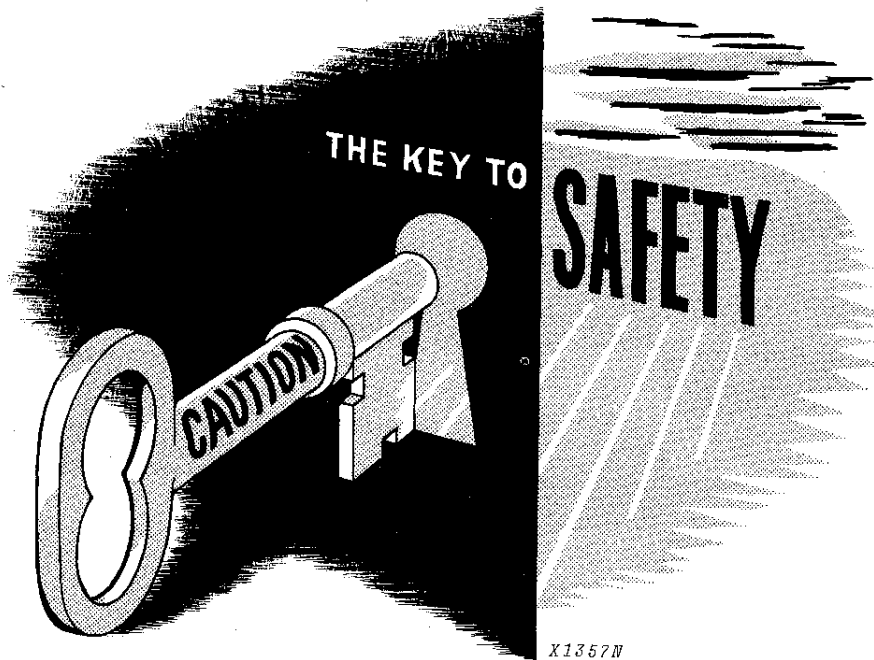
All machinery should be operated only by responsible persons who have been properly instructed and assigned to do so.

Only the operator should be allowed on the operator's platform when the combine is in operation.

Hydraulic oil for the leveling system is supplied from the main combine hydraulic system. This arrangement of the two hydraulic systems gives first priority to the platform lift, reel lift, and variable ground speed drive functions. Therefore, the leveling system will not work when any one of these functions is being used. Be certain to complete the use of these functions before making a sharp turn.

Exercise extreme caution when making turns on slopes. Do not turn faster than the combine can level.

Always keep the combine in gear when going down hills.



Thank you so much for reading.
Please click the “Buy Now!”
button below to download the
complete manual.



After you pay.

You can download the most
perfect and complete manual in
the world immediately.

Our support email:

ebooklibonline@outlook.com