

John Deere 3130 Tractor



JOHN DEERE

OPERATORS MANUAL

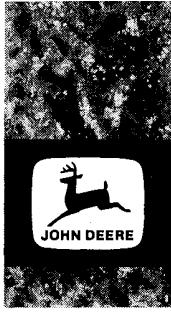
John Deere
3130 Tractor

OML29116 G2 English

John Deere Werke Mannheim
OML29116 G2

LITHO IN U.S.A.
ENGLISH





TO THE PURCHASER

Your versatile new John Deere Tractor meets the exacting requirements of modern farming.

Operating ease and comfort, hydraulic power when and where you need it, the ability to match engine power and transmission speed to any job, outstanding economy and dependability, modern styling, and simplicity of lubrication and service are all special features of this tractor.

At the time the tractor was delivered, the John Deere dealer discussed with you its safe operation and proper care. However, before putting the tractor to work, read this manual. It contains complete instructions for operating the tractor, caring for it, and taking full advantage of its many time- and labor-saving features. After reading the manual, keep it in a convenient place for quick and easy reference if questions arise concerning operation, lubrication, or service.

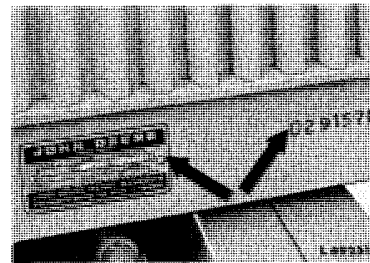
References to right and left sides of the tractor are made throughout this manual. The left and right sides are determined when facing forward in the operator's seat.

The service policy which you received with your new tractor certifies that the tractor was properly inspected and prepared for delivery by your John Deere dealer.

Your John Deere dealer wants to help you get the most value from your tractor. His skilled servicemen can handle every job efficiently. These men are trained in modern service methods; they have all necessary tools and equipment. If new parts are needed, only genuine John Deere parts will be installed. These parts are exact duplicates of the originals, made from the same patterns and of the same high-quality materials.

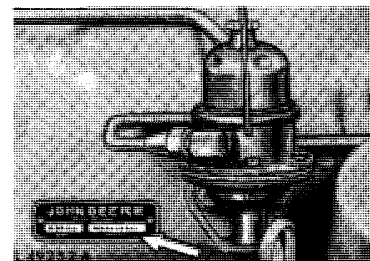
When ordering new parts, only state the 6-digit number group - without letters - of the tractor and engine serial numbers.*

For ready reference, locate and record these numbers in the spaces provided under the following illustrations.



Tractor Serial Number

Record here



Engine Serial Number

Record here

*** Whenever serial numbers are required on all warranty claims or correspondence pertaining to this machine, it is extremely important that the complete number groups together with all letters be furnished. This point cannot be overemphasized.**



CONTENTS

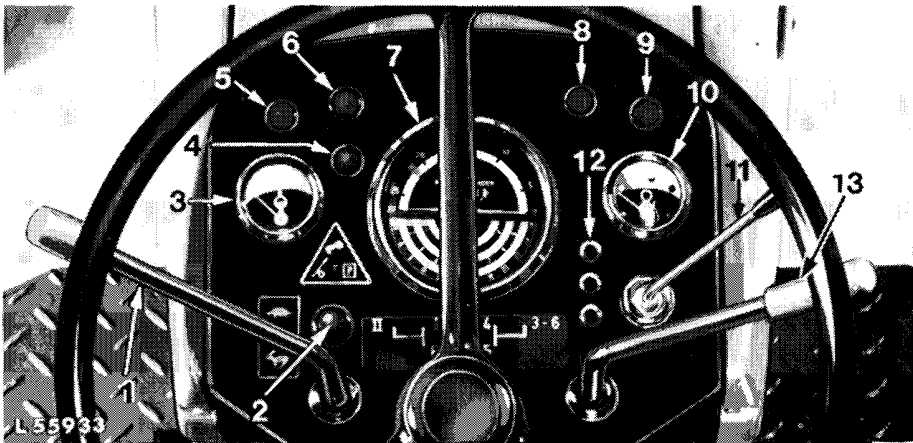
CONTROLS AND INSTRUMENTS	2
OPERATION	4
SAFETY RULES	35
FUELS AND LUBRICANTS	37
LUBRICATION AND PERIODIC SERVICE	39
SERVICE	53
TRACTOR STORAGE	66
TROUBLE SHOOTING	67
HITCHES AND DRAWBARS	73
SPECIFICATIONS	78
INDEX	81



L 55932

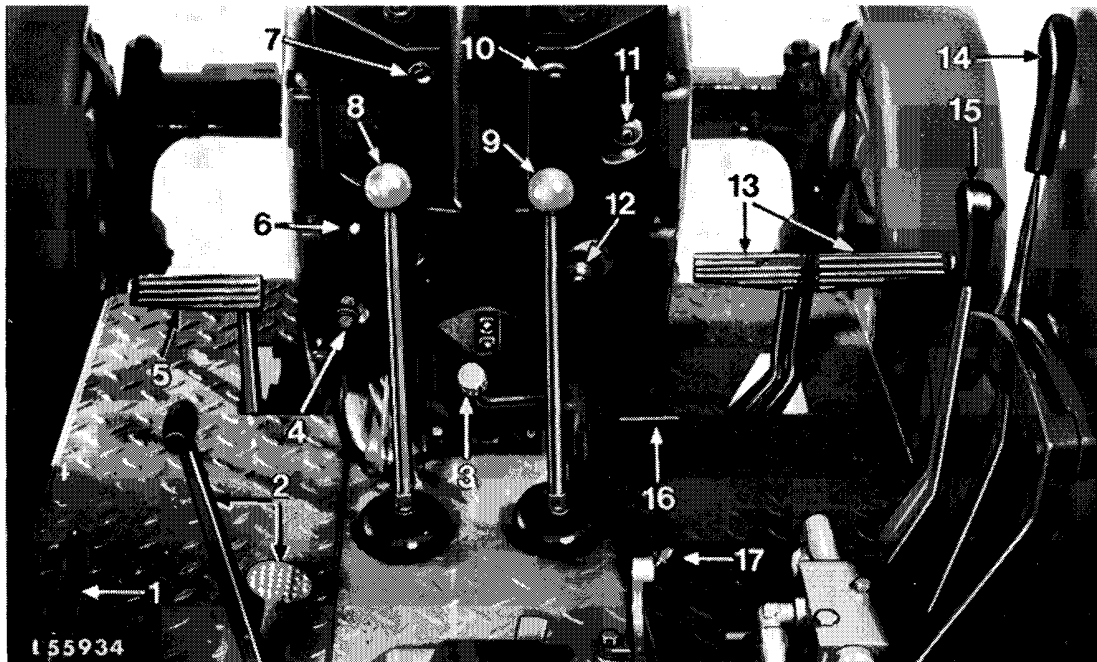


CONTROLS AND INSTRUMENTS



- 1 HIGH-LOW shift lever
- 2 Hazard warning light switch
- 3 Coolant temperature gauge
- 4 Air cleaner indicator light
- 5 Transmission oil pressure indicator light
- 6 Alternator indicator light
- 7 Speed-hour meter

- 8 Engine oil pressure indicator light
- 9 Full beam indicator light
- 10 Fuel gauge
- 11 Turn signal switch
- 12 Turn signal indicator lights
- 13 Hand throttle



- 1 Parking brake lever
- 2 Differential lock (lever and pedal)
- 3 PTO control lever
- 4 Engine shut-off knob
- 5 Clutch pedal

- 6 Fuse box
- 7 Starter button
- 8 Range shift lever
- 9 Gear shift lever
- 10 Horn button
- 11 Main switch

- 12 Cold weather starting aid (Thermostart)
- 13 Brake pedals
- 14 Rockshaft control lever
- 15 Selective control valve lever
- 16 Foot throttle
- 17 Rockshaft selector lever

INSTRUMENTS

Control Lights

Transmission oil pressure



Alternator



Engine oil pressure



The above control lights should light up as soon as main switch is moved to position "1". If this is not the case, a burnt-out bulb or blown fuse may be the cause. Replace defective bulb or fuse.

The control lights should go out as soon as the engine is running and the engine speed has been raised. If this is not the case or if a light goes on during operation, immediately shut off engine and remedy the fault.

If **transmission oil pressure indicator light** goes on during tractor operation, check oil level and condition of transmission oil filter.

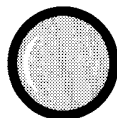
If **alternator indicator light** goes on during engine operation, the alternator is not charging. Check for loose alternator connections, slackness of V-belt or defective alternator.

If **engine oil pressure indicator light** goes on during engine operation, check oil level and condition of engine oil filter.



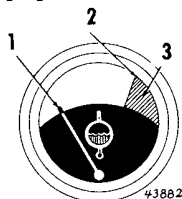
Air cleaner indicator light

If air cleaner indicator light goes on, clean air filter element or replace element after it has been cleaned six times.



Full-beam indicator light
(not with sealed beam lights)

As soon as full-beam is turned on, the blue full-beam indicator light will go on. Dim the lights in case of oncoming traffic or when driving through populated areas.

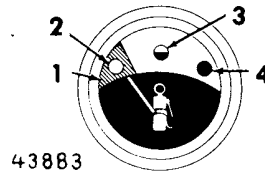


Coolant temperature gauge

- 1 = 38° C (100° F)
- 2 = 104° C (219° F)
- 3 = Red warning zone

If the gauge needle is in the red warning zone, the engine is overheating and must be stopped at once. Check coolant level in radiator and check cooling system for leaks.

Fuel Gauge



- 1 = Red warning zone
- 2 = Empty tank
- 3 = Half-full tank
- 4 = Full tank

43883

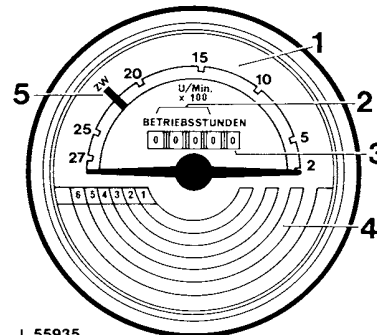
The fuel gauge shows the amount of fuel in tank, from "empty" via "half-full" to "full".

Refill tank as soon as needle points to red zone.

Never run fuel tank completely dry!

Speed-hour Meter

The speed-hour meter facilitates the economical use of the tractor under all operating conditions. It also facilitates choosing the right gear.



L 55935

The **speed-hour meter** shows the following:

- 1 = **Engine speed** on the upper half of the dial. The figure shown multiplied by 100 indicates the actual number of engine revolutions.
 - 2 = **Hours of operation** in full hours.
 - 3 = **Hours of operation** in tenths of hours.
- The hour meter facilitates close observation of the proper service intervals.
- 4 = The **tractor speed** for the gear engaged.
 - 5 = **PTO operation**. The green mark shows the engine speed required for powershaft operation.

Thank you so much for reading.
Please click the “Buy Now!”
button below to download the
complete manual.



After you pay.

You can download the most
perfect and complete manual in
the world immediately.

Our support email:

ebooklibonline@outlook.com