

**455**  
**Lawn and Garden**  
**Tractor**  
(Serial No. 010001 – )

**OPERATOR'S**  
**MANUAL**

**John Deere**  
**Lawn & Grounds Care Division**  
**OMM117695 F3**  
This manual replaces OMM117695 H2

North American Version  
Litho in U.S.A  
English

# INTRODUCTION

---

---

**THANK YOU for purchasing a John Deere product.**

Read this manual and your attachment manuals thoroughly. Failure to do so could result in personal injury or equipment damage.



This manual should be considered a permanent part of your machine and should remain with the machine when you sell it.

Measurements in this manual are U.S. customary units and their metric equivalents. RIGHT-HAND and LEFT-HAND sides are determined by facing in the direction the machine will travel when going forward.

Product warranty is provided as part of John Deere's support program for customers who operate and maintain their equipment as described in this manual. The product warranty is explained on the warranty certificate you received from your dealer.

<b>Date of Purchase:</b> _____
-----------------------------------

<b>Dealer Name:</b> _____	<b>Phone:</b> _____
------------------------------	------------------------



M71632

---

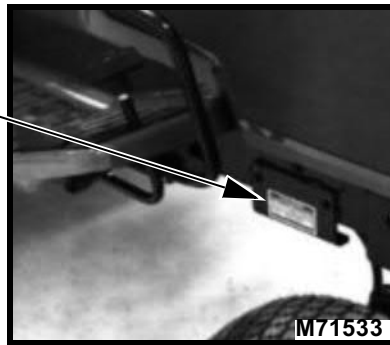
# INTRODUCTION

---

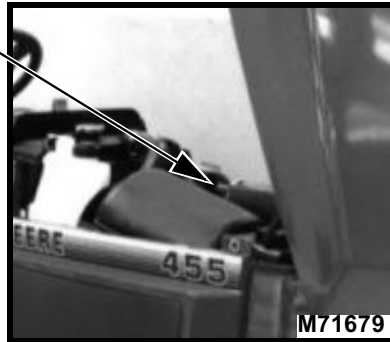
---

Record identification numbers below. Be sure to record all the numbers to help in tracing the machine if it is stolen. You also need to give these numbers to your dealer when you order parts

**Vehicle Serial Number:**  
□ □ □ □ □ □ □ □ □ □ □ □ □ □



**Engine Serial Number:**  
□ □ □ □ □ □ □ □ □ □ □ □ □ □



---

## TABLE OF CONTENTS

---

	Page
<b>Safety Signs</b>	
Safety-Alert Symbol .....	1
Machine Safety Labels.....	1
<b>Controls</b>	
Dash Panel.....	3
Foot and Platform .....	3
Cruise and Free-Wheeling .....	4
Air Restriction Indicator .....	4
<b>Operating</b>	
Operate Safely .....	5
Adjustments: .....	9
Tilt Steering Wheel.....	9
Seat.....	10
Rear Wheel Spacing .....	11
Driving: .....	12
Using Fuel Shut-off Valve .....	12
Using The Park Brake .....	12
Indicator Lights and Gauges .....	13
Starting The Engine .....	15
Stopping The Engine.....	17
Using Travel Controls.....	17
Using Cruise Control .....	18
Using Differential Lock .....	18
Using Hydraulic Control Levers.....	19
Using PTO (Power Take-off).....	20
Using Mower Height Control .....	21
Mower J-Pins .....	22
Using Free-Wheeling Lever .....	23
Daily Operating Checklist.....	23
Testing Safety Systems:	
Test 1 - Indicator Lights.....	24
Test 2 - Brake Switch .....	25
Test 3 - PTO Switch.....	25
Test 4 - Seat Switch .....	26
Test 5 - Mower Blade Stop Time.....	27

---

## TABLE OF CONTENTS

---

	Page
<b>Operating (Continued)</b>	
Avoid Damage To Plastic And Painted Surfaces.....	27
Using Weights and Tire Chains .....	28
Transporting Tractor .....	26
<b>Lawn Care</b>	
Mowing Tips.....	37
Bagging Tips.....	39
Mulching Tips.....	40
<b>Replacement Parts</b>	
John Deere Service Parts.....	41
<b>Service Machine Safely</b>	
Practice Safe Maintenance.....	42
<b>Service Interval Chart</b>	
Services Required .....	46
<b>Service - Engine</b>	
Engine Oil .....	48
Checking Engine Oil Level.....	49
Changing Engine Oil and Filter.....	50
Cleaning Air Intake Screens .....	52
Checking Air Restriction Indicator.....	52
Cleaning Radiator Screen and Fins.....	53
Servicing Cooling System.....	53
Engine Coolant .....	54
Checking Coolant Level.....	55
Draining, Flushing, and Filling Cooling System .....	56
Adjusting Fan Belt Tension.....	59
Replacing Fan Belt .....	59
Checking Sediment Bowl.....	60
Cleaning Fuel Filter Sediment Bowl.....	60
Replacing Air Cleaner Elements.....	61

---

Thank you so much for reading.  
Please click the “Buy Now!”  
button below to download the  
complete manual.



After you pay.

You can download the most  
perfect and complete manual in  
the world immediately.

Our support email:

[ebooklibonline@outlook.com](mailto:ebooklibonline@outlook.com)