

237 Corn Picker and 237A Corn Snapper



JOHN DEERE

OPERATORS MANUAL 237 Corn Picker and 237A Corn Snapper

OMN159139 E0 English

John Deere Des Moines Works
OMN159139 E0

LITHO IN U.S.A.
ENGLISH



TO THE PURCHASER

The purpose of this book is to give you useful information on how to operate your new John Deere 237 Corn Picker or 237S Corn Snapper in the many field and crop conditions under which corn is grown.

A corn picker and snapper must be built to handle a wide range of conditions. Average conditions can be handled by the standard equipment with which the machine is shipped. However, unusual conditions may require some special equipment.

Field conditions vary from year to year, from day to day and even from hour to hour. Different varieties of corn present widely different picking problems. A careful study of adjustments on your picker or snapper and what they accomplish under different conditions will allow you to reap the many benefits and economies that your picker can provide.


This manual contains operational information for the corn picker as well as the corn snapper. If you have purchased a corn snapper, disregard any reference to the husking rolls, husk auger, etc.

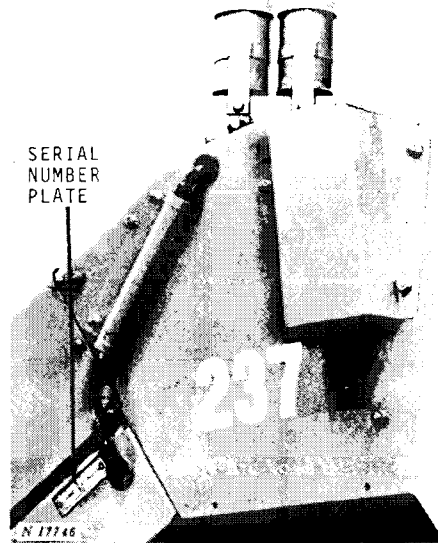
Right-hand and left-hand references are determined by standing at the rear of the corn picker and facing in the direction of travel.

If you find you need information not covered in this manual, see your John Deere dealer. He has the latest information on how to get the best service from your picker and can give you prompt "know-how" service in the field or in his shop.

When in need of parts, go to your John Deere dealer who carries genuine John Deere parts for your corn picker or snapper. Be sure to give him the serial number of your machine and the year purchased. This information should be recorded in the space provided on this page as soon as you have received your picker or snapper.

The warranty on this corn picker or snapper appears on your copy of the purchase order which you should have received from your dealer when you purchased the corn picker or snapper.

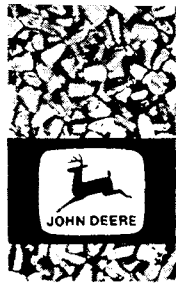
 This safety alert symbol identifies important safety messages in this manual. When you see this symbol, be alert to the possibility of personal injury and carefully read the message that follows.



Serial Number

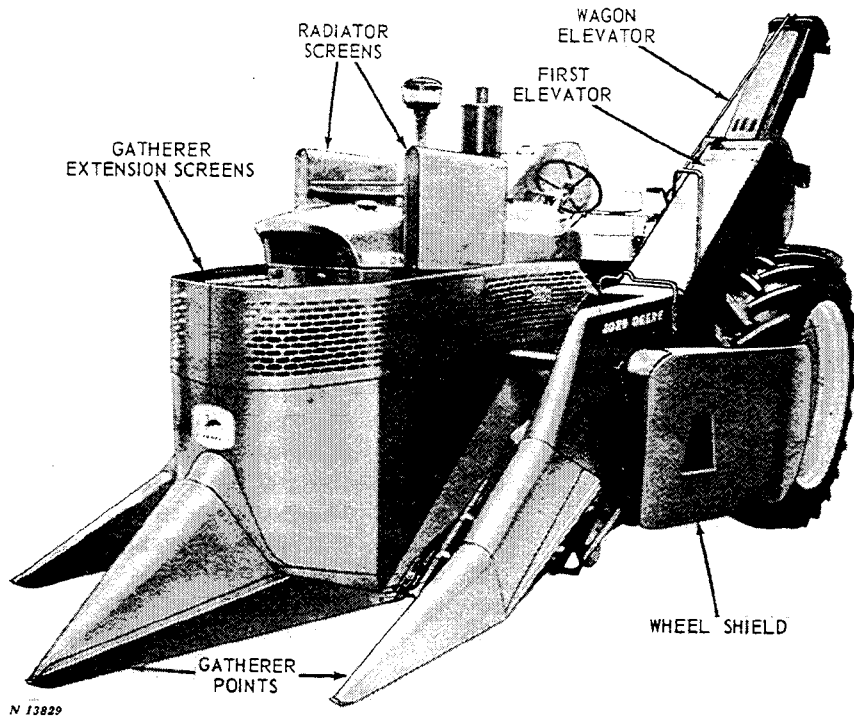
Date Purchased

The Serial Number Plate is on the outside of the left-hand row unit as illustrated above.

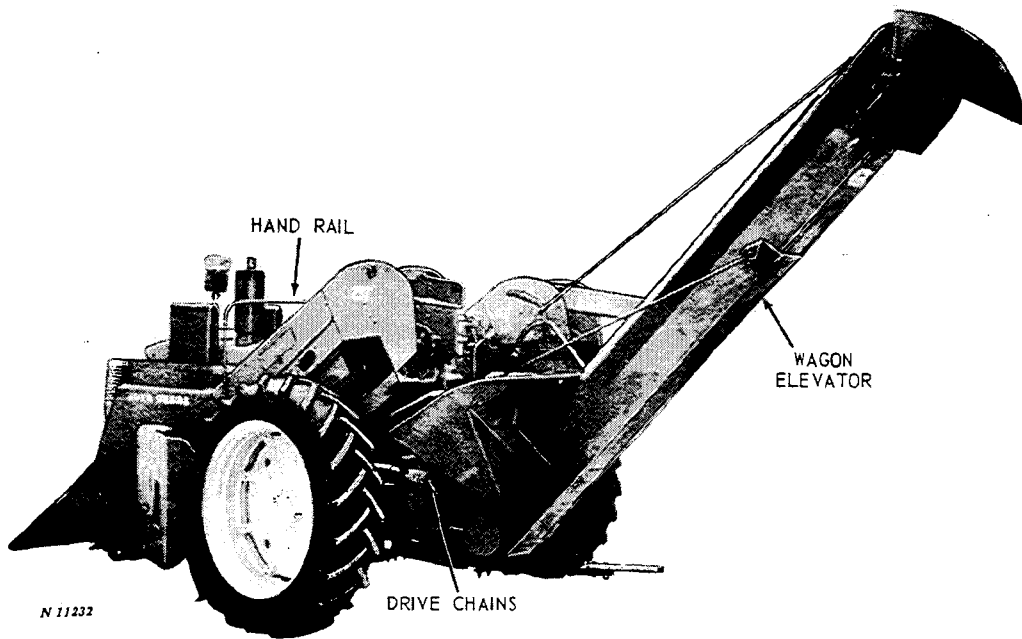


CONTENTS

SPECIFICATIONS	Page 3-4	Husking Roll Gears	Page 19
OPERATION	5-24	Husk Auger	19
Controls on Tractor	5	Shelled Corn Auger	19
Corn Picker Lift	5	Wagon Elevator	20-22
Warning Lights	6	Cleaning Fan	20
In the Field	6-7	Cleanout Opening	20
Field Losses	8	Elevator Hanger Rods	20
Fire Prevention	8-9	Elevator Ear Corn Deflector	20
Cold Weather Operation	9	Adjusting Conveyor Chain	21
Wheel Shield	9	Wagon Elevator Throw-Out	21
Stands	10	Elevator Alignment	22
Row Spacing	10	Drawbar Extension	22
Gatherers	11-13	Drive Chains and Clutches	22-23
Gatherer Points	11	Adjusting Drive Chains	22-23
Gatherer Chains	11-12	Adjusting Slip Clutches	23
Gatherer Throat Opening	12-13	Safety Suggestions	23-24
Snapping Rolls	13-15	ATTACHMENTS	25-26
Snapping Roll Bearings	13	LUBRICATION	27-31
Adjusting Snapping Rolls	14	TROUBLE SHOOTING	32-34
Timing Snapping Rolls	14-15	SERVICE	35-40
Stripper Bars	15	Multi-Luber System	35-36
Trash Knives	15	Timing Snapping Rolls	36-37
First Elevator and Husking Rolls	16-19	Replacing Snapping Rolls	37
First Elevator Conveyor Chain and guide rod	16	Replacing Husking Roll Rubber Buttons	38
First Elevator Conveyor Drive Slip Clutch	16-17	Timing Rubber Buttons	39
Trash Mover	17	Replacing Husking Rolls	39-40
Ear Corn Retarders	17	REMOVING AND MOUNTING PICKER	41-80
Husking Rolls	18		
Adjusting Husking Rolls	18		



John Deere 237 Corn Picker



Rear View of John Deere 237 Corn Picker with Wagon Elevator



SPECIFICATIONS

TRACTORS

John Deere 50, 60, 70, 520, 530, 620, 630, 720, 730, 2010, 2510, 2520, 3010, 3020, 4010, 4020 and A Tractors.

Farmall 706, 806, 656, 504, 460, 560, 450, 400, 350, 300, Super M-TA, Super M and M Tractors.

Allis-Chalmers WD, WD45, D17 and D17 Diesel Tractors.

Massey-Harris 44 and 444 Tractors.

Oliver 77, 88, 770, 880, Super 77, Super 88, 1600 and 1800 Tractors.

Ford 6000 Tractor.

Case 700, 730, 800, and 830 Tractors.

Tractor must be equipped to operate a remote hydraulic cylinder.

John Deere 2010 Tractor must be equipped with fully heat-treated rear axles and 13.9 x 36 rear tires. Tractors with power adjusted rear wheels or sliding hub rear wheels must be equipped with long rear axles.

Front tires — tractors can be equipped with 7.50 width front tires with heavy-duty Roll-O-Matic. However, 7.50 tires should not be used for corn planted on the contour.

Rear tires — Tire size should not exceed 16.9 inches.

CYLINDER

An 8-inch stroke, double acting ASAE standard hydraulic cylinder is required. The cylinder must be equipped with two hoses, approximately four feet long.

DRIVE

1000 rpm PTO on John Deere 2010, 2520, 3010, 3020, 4010, and 4020 Tractors.

540 to 1000 rpm PTO on other tractors.

ROW SPACING

Handles rows spaced - 38 to 44 inches.

SNAPPING ROLLS

Length, including points;

outer roll - 41 inches

inner roll - 42 inches

Center-to-center distance between snapping rolls - 39 to 42 inches.

Opening of snap rolls adjusted by operator from tractor seat.

Speed of snapping rows - 1050 revolutions per minute.

SNAPPING ROLL POINTS

Outside point - spiralled, to guide stalks in row unit.

Inside point - smooth, for minimum agitation of entering stalks and pinching of low hanging ears.

GATHERER POINTS

Adjustable, hinged above gathering chains.

Lift at hinge point - 27 to 30 inches.

GATHERER CHAINS

Steel roller chain, 3 per snapping unit, enter gatherer throat opening 13 inches ahead of snapping roll points.

Inner gatherer chain is tilted from the horizontal so that the return path does not extend over inner frame.

Clearance between gatherer chains and ground - zero inches and up.

FIRST ELEVATOR

Flights spaced 18 inches apart. Width of elevator - 6-1/2 to 10 inches wide.

Thank you so much for reading.
Please click the “Buy Now!”
button below to download the
complete manual.



After you pay.

You can download the most
perfect and complete manual in
the world immediately.

Our support email:

ebooklibonline@outlook.com