

4300 BEET HARVESTER



JOHN DEERE

OPERATORS MANUAL

4300
BEET HARVESTER

OMN159393 D5 English

OMN159393 D5

LITHO IN THE U.S.A.
ENGLISH





To the purchaser

This new beet harvester was carefully designed and manufactured to give years of dependable service. To keep it running efficiently, read the instructions in this operator's manual. Each section is clearly identified so you can easily find the information you need — whether it is operation, lubrication, or adjustments and service. Read the Table of Contents to learn where each section is located.

In addition to the equipment furnished with your beet harvester, attachments are available to help you do a better job in special crop conditions. These are described in the Special Equipment section of this manual and can be purchased from your John Deere dealer.

"Right-hand" and "left-hand" sides are determined by facing in the direction the beet harvester will travel when in use.

Record your beet harvester serial number in the space provided on page 46. Your dealer needs this information to give you prompt, efficient service when you order parts or attachments. If your beet harvester requires replacement parts, go to your John Deere dealer where you can obtain genuine John Deere parts — accept no substitutes.

The warranty on this beet harvester appears on your copy of the purchase order which you should have received from your dealer when you purchased the beet harvester.



This safety alert symbol identifies important safety messages in this manual. When you see this symbol, be alert to the possibility of bodily injury and carefully read the message that follows.

Your operator's manual contains SI Metric equivalents which follow immediately after the U.S. customary units of measure.

JOHN DEERE SERVICE LITERATURE AVAILABLE...

To order these publications fill out this form and the payment information and mail it to the address above. Make checks payable to Deere & Co. Service Publications. Please allow three weeks for delivery. No COD orders, please. Do not send cash or stamps. To place credit card orders, call 1-800-522-7448. If you want manuals or catalogs for equipment not shown on this list, provide the model number, serial number, and name of the product.

John Deere Distribution Service Center
 Department S/P
 P.O. Box 186, Moline, IL 61266-0186

Please send to . . .

Name _____

Address _____

Town _____

State _____ Zip _____

Title	Order No.	Qty.	Price Each
Parts Catalog			
4300 Beet Harvester	PC-1413		
Operator's Manual			
4300 Beet Harvester	OM-N159393		
Technical Manual			
4300 Beet Harvester	TM-1120		

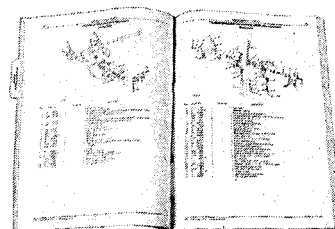
NOTE: If you want manuals or catalogs for equipment not shown on this list, list the model number, serial number and name of the equipment below.

For current prices of John Deere Service Literature, please call 1-800-522-7448

FMO Manual - Tractors	FMO-101B	
FMO Manual - Combine Harvesting	FMO-151B	
FMO Manual - Preventive Maintenance	FMO-161B	
FMO Manual - Machine Safety	FMO-181B	
Set of Four FMO Manuals (Above)	FMO-390 Set	
FOS Manual - Hydraulics	FOS-10B	
FOS Manual - Electrical Systems	FOS-20B	
FOS Manual - Engines	FOS-30B	
FOS Manual - Power Trains	FOS-40B	
FOUR FOS MANUALS (above)	FOS-90 Set	
FOS Manual - Shop Tools	FOS-51B	
FOS Manual - Welding	FOS-52B	
FOS Manual - Belts and Chains	FOS-53B	
FOS Manual - Bearings and Seals	FOS-54B	
FOS Manual - Tires and Tracks	FOS-55B	
FOS Manual - Mowing and Spraying Equipment	FOS-56B	
FOS Manual - Air Conditioning	FOS-57B	
FOS Manual - Fuels, Lubricants and Coolants	FOS-58B	
FOS Manual - Fiber Glass	FOS-59B	
FOS Manual - Fasteners	FOS-60B	
SET OF TEN FOS MANUALS FOS-51B, 52B, 53B, 54B, 55B, 56B, 57B, 58B, 59B and 60B	FOS-70 Set	
SET OF ALL FOURTEEN FOS MANUALS	FOS-180 Set	

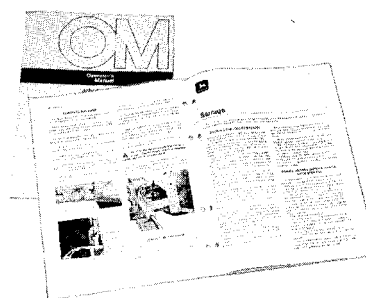
Check or money order in U.S. dollars enclosed
 (Do not send cash or stamps) Total
 Prices subject to change without notice.

PARTS CATALOG



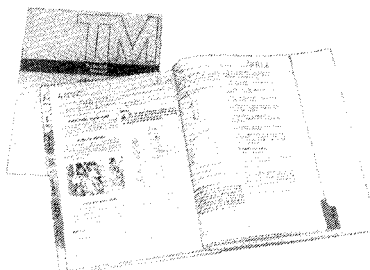
A parts catalog containing exploded view illustrations and lists of all parts is useful when purchasing service parts. Helps identify the correct parts. Useful in assembling and disassembling.

OPERATOR'S MANUAL



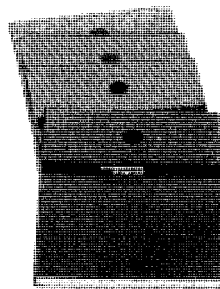
An extra copy of the operator's manual may be important if the copy furnished with your machine is misplaced.

TECHNICAL MANUAL



The technical manual is a concise service guide for your machine. A partial list of contents includes: specifications and wear tolerances, diagnosis and adjustments, exploded view illustrations, photographs of special assembly and disassembly procedures, hydraulic oil flows, and wiring diagrams.

FMO AND FOS MANUALS



These are basic manuals covering most all types and makes of agricultural machinery. FMO manuals tell you how to *operate* machines, while FOS manuals tell you how to *service* machines. Each manual starts with basic theory and is fully illustrated with plenty of colorful diagrams and photographs. Both the "whys" and "hows" of adjustments and repairs are covered in this handy reference library.

4300 BEET HARVESTER

PREDELIVERY CHECK LIST

After the harvester has been completely assembled, inspect it to be sure it is ready to be operated before it is delivered to the customer. The following check list is a reminder of important points of inspection for this machine. Check off each item as it is found to be satisfactory, or after proper adjustment has been made.

- All attaching hardware tight, cotter pins spread.
- Tractor horsepower, hydraulic system, and electrical system adequate to operate the beet harvester.
- Hydraulic hoses correctly coupled and routed.
- Electromagnetic clutch wiring and switch (tank-type harvester) correctly installed and functioning.
- Any parts scratched in shipment have been touched up with paint.
- This beet harvester has been thoroughly checked, and to the best of my knowledge is ready for delivery to the customer.

(Date Set Up)

(Signature of Person Making Set-up)

OWNER REGISTER

Name _____

R. R. No. _____

City or Town _____

State _____ Zip _____

Harvester Serial No. _____

Date Purchased _____

DELIVERY CHECK LIST

When the beet harvester is delivered, the following check list is a reminder of important information which should be conveyed directly to the customer. Check off each item as it is fully explained to the customer.

- Give the operator's manual to the customer and review all operating instructions and safety precautions with him.
- Emphasize the importance of proper installation of hydraulic lines and electrical wiring.
- When the harvester is transported on the road, day or night, warning lights and devices must be used for adequate warning to operators of other vehicles. Advise the customer to check local governmental regulations concerning road transport of farm machinery.
- Advise the customer that the life expectancy of this or any other machine is dependent on the maintenance and care as described in the operator's manual.
- To the best of my knowledge, this beet harvester has been delivered ready for field use and the customer has been fully informed as to the proper care and operation of same.

(Date Delivered)

(Signature of Person Making Delivery)

AFTER-SALE CHECK LIST

The following is a suggested list of items to be checked at a dealer-customer mutually agreeable time during the first operating season.

- Check with the customer as to the performance of the harvester. Make certain he understands the proper operating adjustments.
- If possible, operate the harvester to see that it is functioning properly.
- Acquaint the customer with any special attachment which will help him to do a better job.
- Go over entire harvester for loose or missing bolts.
- Check for broken or damaged parts.
- Check to see that all safety shields are in place.
- Check with the customer to ascertain if the recommended periodic lubrication has been performed.
- Review the operator's manual with the customer and stress the importance of proper lubrication and safety precautions.

Date _____

Signed _____



Contents

	Page		Page
SAFETY SUGGESTIONS.....	2	CLEANING BED.....	13
IDENTIFICATION VIEWS.....	3	GRAB ROLLS.....	14
HOW THE BEET HARVESTER FUNCTIONS.....	4	Spacing.....	14
OPERATION.....	4-21	FLAIL PADDLES.....	15
PREPARING THE BEET HARVESTER.....	5	ROCK RELEASE DOOR.....	15
General preparations.....	5	VERTICAL AUGER.....	16
Daily inspection.....	5	Cover grate.....	16
Beet harvester ballast.....	5	Replaceable auger tip.....	16
PREPARING THE TRACTOR.....	6	TRUCK OR TANK LOADING CONVEYOR.....	17
General requirements.....	6	ROW FINDER.....	17-19
Wheels and tires.....	6	Pre-harvest adjustments.....	17
Sway blocks.....	6	Field adjustments.....	18-19
3-point hitch.....	6	TIRES.....	19
Electric switch and receptacle.....	6	TRANSPORTING.....	20
Drawbar.....	6	STORAGE.....	21
Power take-off.....	6	Preparing harvester for storage.....	21
Front ballast.....	6	Preparing harvester for use.....	21
Metering valve arms.....	6	LUBRICATION.....	22-26
ATTACHING BEET HARVESTER		SERVICE.....	27-34
TO TRACTOR.....	7	ROLLER DRIVE CHAINS.....	27-28
DETACHING BEET HARVESTER		POTATO CHAINS.....	29
FROM TRACTOR.....	7	SLIP CLUTCHES.....	30-31
CONTROLS.....	8	ELECTROMAGNETIC CLUTCH.....	31-32
Hydraulic controls.....	8	ROCK RELEASE DOOR.....	32
Electric control.....	8	WHEEL BEARINGS.....	33
PTO SPEED AND POWER.....	8	RUBBER TIRES.....	33
DEPTH AND ANGLING CONTROL.....	9	LIFTER WHEEL BEARINGS.....	33
LIFTER WHEELS.....	9	ROW FINDER VALVE.....	33
Spacers.....	9	HYDRAULIC CIRCUIT DIAGRAMS.....	34
Fan fillers.....	10	TROUBLE SHOOTING.....	35-36
Scrapers.....	10	ASSEMBLY.....	37-44
LIFTER WHEEL PADDLES.....	10	SPECIFICATIONS.....	45
ROW SPACING.....	11-12	SERIAL NUMBER.....	46



Safety Suggestions

⚠ Careless use of machinery causes many accidents. Make your farm a safer place to live and work by following these safety suggestions. Insist that they be followed by those working with and for you.

Do not allow anyone to ride on the harvester when it is in motion. Observe the beet harvester operation only from the tractor platform.

Safety shields were designed with your safety in mind. Keep them in place when operating the harvester.

Always shut off the engine, set the brakes, and disengage the PTO when leaving the tractor. Remove the ignition key when leaving the tractor unattended.

Reduce speed before turning or applying the brakes. Apply both tractor brakes evenly when making emergency stops. Drive at speeds slow enough to insure your safety.

Wear relatively tight and belted clothing. Loose clothing may catch on some part of the machine and cause an injury.

Escaping fluid under pressure can have sufficient force to penetrate the skin, causing serious personal injury. Before disconnecting lines, be sure to relieve all pressure. Before applying pressure to the system, be sure all connections are tight and that lines, pipes and hoses are not damaged.

Fluid escaping from a very small hole can be almost invisible. Use a piece of cardboard or wood, rather than hands, to search for suspected leaks.

If injured by escaping fluid, see a doctor at once. Serious infection or reaction can develop if proper medical treatment is not administered immediately.

Lower the lifter wheels when the harvester is not in use. Do not work under the frame when the wheels are raised.

Do not lubricate, adjust, or clean the harvester when it is in motion.

Always block the wheels and use a safety support if wheels are removed, when working on, under, or around the harvester.

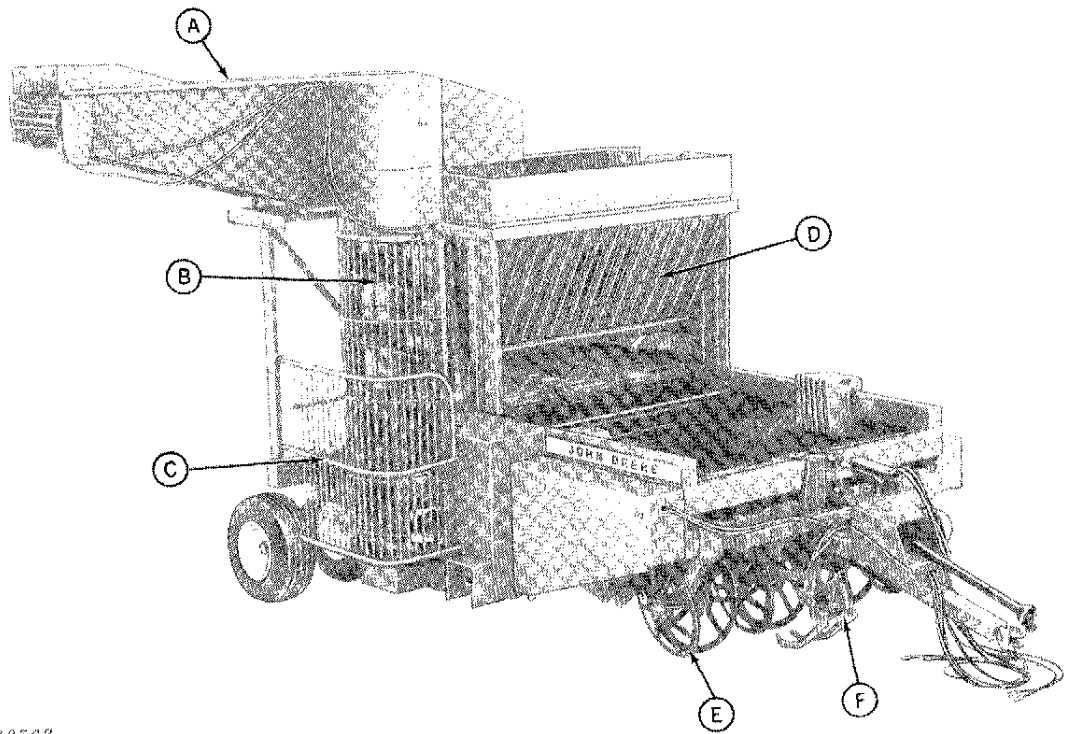
Always shut off the tractor engine before lubricating, adjusting, or refueling.

Do not smoke or use a light with an open flame when refueling any engine.

When transporting the harvester on a road or highway at night or during the day, use accessory lights and devices for adequate warning to operators of other vehicles. In this regard, check local governmental regulations. Various safety lights and devices are available from your John Deere Dealer.



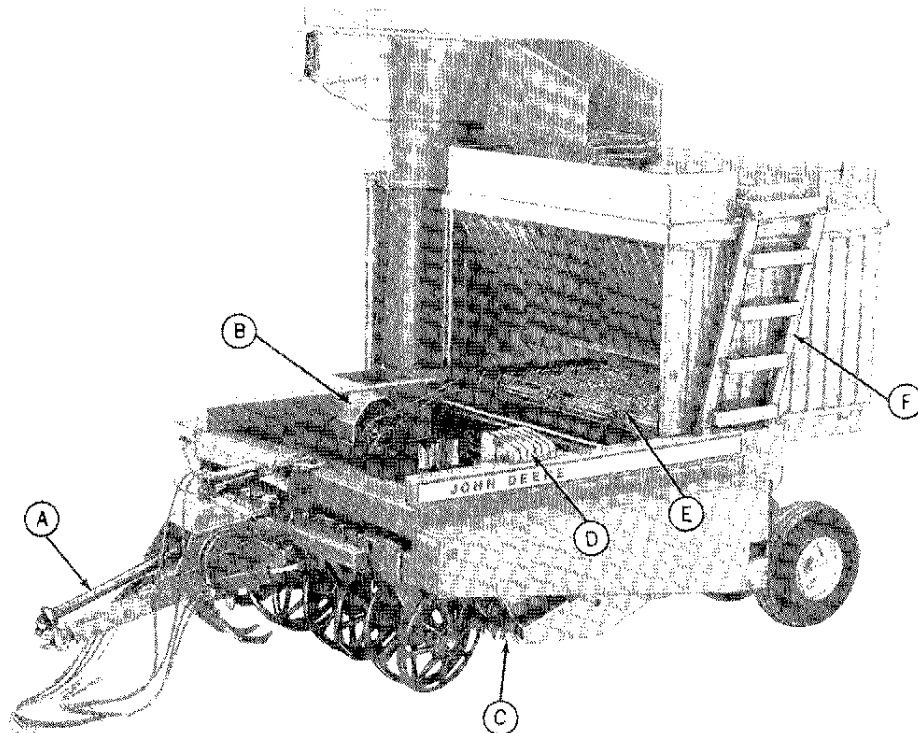
**be careful.....
avoid accidents**



N20307

- A - Truck or Tank Conveyor
- B - Vertical Auger
- C - Shield Grate

- D - Holding Tank
- E - Lifter Wheels
- F - Row Finder



- A - Powershaft
- B - Electromagnetic Clutch
- C - Star Wheel Bed

- D - Quik-Tatch Weights
- E - Unloading Conveyor
- F - Ladder

N20308

Thank you so much for reading.
Please click the “Buy Now!”
button below to download the
complete manual.



After you pay.

You can download the most
perfect and complete manual in
the world immediately.

Our support email:

ebooklibonline@outlook.com