

1610 SERIES DRAWN CHISEL PLOW (SN 13494-)



JOHN DEERE

OPERATORS MANUAL 1610 SERIES DRAWN CHISEL PLOW (SN 13494-)

OMN200034 H4 English

JOHN DEERE DES MOINES WORKS
OMN200034 H4

LITHO IN THE U.S.A.
ENGLISH



Introduction



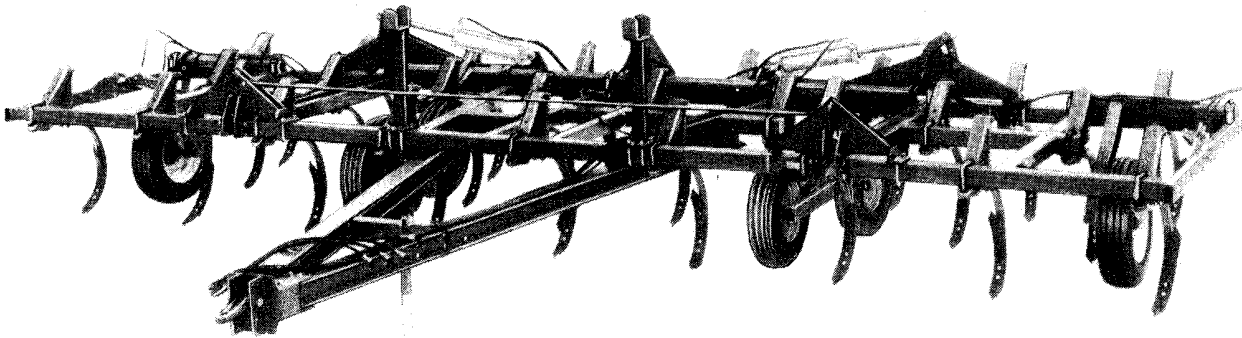
This safety alert symbol identifies important safety messages in this manual. When you see this symbol, be alert to the possibility of bodily injury and carefully read the message that follows.

This publication contains both the U.S. customary units of measurement and the SI Metric equivalents.

“Right-hand” and “left-hand” sides are determined by facing in the direction the chisel plow will travel when in use.

Your warranty appears on your copy of the purchase order which you should have received from your dealer.

Record your model and serial number in Specifications section.



1610 Flexible Horizontal-Fold 25 Ft. (7.6 mm) Chisel Plow

Checklists

1610 DRAWN CHISEL PLOW

PREDELIVERY CHECK LIST

After the chisel plow has been completely assembled, inspect to be sure it is in good running order before delivering to the customer. The following check list is a reminder of points to inspect. Check off each item as it is found satisfactory or after proper adjustment is made.

- SMV emblem and reflectors installed.
- All grease fittings have been lubricated. See Lubrication and Maintenance.
- Tighten wheel bolts to proper torque and inflate tires.
- Make sure the number of standards equals the total footage of the model.
- Make sure all the customer-ordered attachments have been installed.

- Any parts scratched in shipment have been touched up with paint.
- This chisel plow has been thoroughly checked and to the best of my knowledge, is ready for delivery to the customer.

Signature: _____

Date: _____

9A1; N03;1610U A 080584

DELIVERY CHECK LIST

At the time the chisel plow is delivered, the following check list is a reminder of information which should be conveyed directly to the customer. Check off each item as it is fully explained to customer.

- Advise the customer the importance of using the proper tools.
- Explain to the customer that the life expectancy of this or any other machine depends on regular lubrication as directed in the operator's manual.
- Give the operator's manual to the customer and explain all operating adjustments.
- Advise the customer of all the safety precautions that must be exercised while using this chisel plow.

- When the chisel plow is transported on a road or highway at night or during the day, accessory lights and devices should be used for adequate warning to operators of other vehicles. In this regard, tell customer to check local governmental regulations.
- To the best of my knowledge, this machine has been delivered ready for field use and the customer has been fully informed as to proper care and operation.

Signature: _____

Date: _____

9A1; N03;1610U B 080584

N19;FC 190684

Checklists

AFTER-SALE CHECK LIST

The following is a suggested list of items to be checked at a dealer-customer mutually agreeable time during the first operation season.

- Check with the customer as to the performance of the chisel plow. Make certain the proper operating adjustments are understood.
- If possible, operate the chisel plow to see that it is functioning properly.
- Acquaint the customer with any special attachment which will help do a better job.
- Go over entire chisel plow for loose or missing bolts.
- Check for broken or damaged parts.
- Check with the customer to ascertain if the recommended periodic lubrication has been performed.
- Review the operator's manual with the customer and stress the importance of proper lubrication and safety precautions.

9A1; N03;;1610U C 080584

OWNER REGISTER

Name _____

Post Office _____

County _____ State _____

Size and Serial Number _____

Date Sold _____

9A1; N03;;1610U D 080584

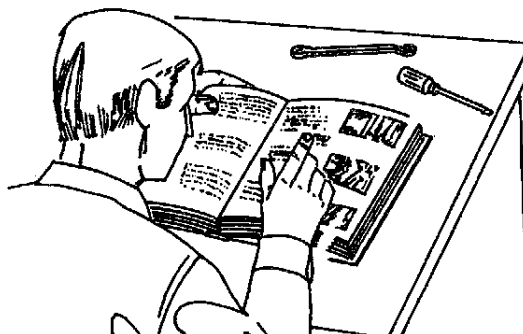
Contents

	Page
SAFETY	05-01
PREPARING THE TRACTOR	10-01
PREPARING THE CHISEL PLOW	15-01
ATTACHING AND DETACHING	20-01
TRANSPORTING	25-01
OPERATING THE CHISEL PLOW	30-01
Operating Guidelines	30-01
Lowering Outriggers From Transport to Field	30-03
Raising Outriggers From Field to Transport	30-04
Adjusting Outrigger Linkage--For All Models	30-04
Adjusting Linkage--Vertical Fold Models	30-05
Adjusting Linkage--Horizontal Fold Models	30-07
Understanding the Depth Control Operation	30-07
Understanding How the Depth Control, Series System, Works	30-08
Regulating Lift and Drop Time	30-10
Leveling Outriggers	30-11
Adjusting Spring-Trip Standards	30-12
Replacing Twisted Shovels	30-13
Using Dual Cylinder Depth Control Lift (Attachment)	30-13
Using Dual Cylinder Outrigger Lift (Attachment)	30-14
LUBRICATION AND MAINTENANCE	35-01
TROUBLESHOOTING	40-01
SERVICE	45-01
STORAGE	50-01
CRIME PREVENTION TIPS	55-01
ASSEMBLY	60-01
SPECIFICATIONS	65-01
Serial Number	65-04

Safety

READ OPERATOR'S MANUAL

DO NOT operate machine without reading this operator's manual.



7A6;N35538 N01;7440 SAA 111182

IDENTIFY SIGNAL WORDS IN THIS MANUAL

"CAUTIONS" are identified by bold type, and indicate there is a possibility of injury to you or other people.

"IMPORTANTS" are identified by bold type, and indicate there is a possibility of damage to the machine.

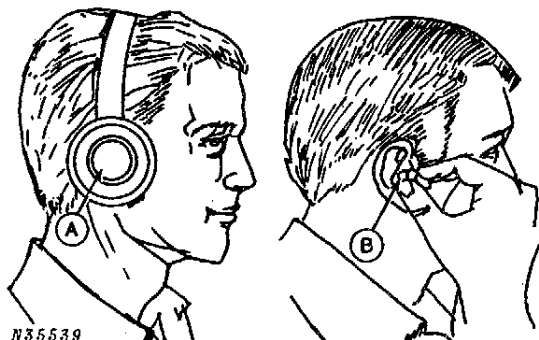
"NOTES" are identified by italics. They provide additional information that is an exception to a previous statement or is not directly related to the original subject.

8A7; N01;;250C F 121283

PROTECT AGAINST NOISE

Prolonged exposure to loud noise can cause impairment or loss of hearing.

Wear a suitable hearing protective device such as earmuffs (A) or earplugs (B) to protect against objectionable or uncomfortable loud noises.



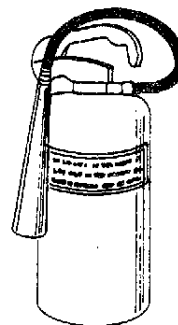
N35539

7A6;N35539 N01;7440 SAC 111182

AVOID FIRES

DO NOT refuel with the tractor engine running.

DO NOT smoke or use a lantern when refueling.



9A6;N35540 N03;;712 SAD 040283

OPERATE SAFELY

DO NOT allow anyone to ride on the machine when it is in motion.

Always shut off tractor engine and shift to "Park" when leaving tractor. Remove key when leaving tractor unattended.

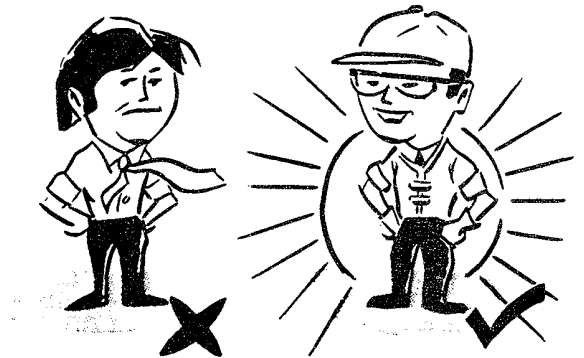
DO NOT operate close to a ditch or creek.

Slow down when turning.

Drive slowly over rough ground.

Apply both tractor brakes evenly when making emergency stops. Plan ahead.

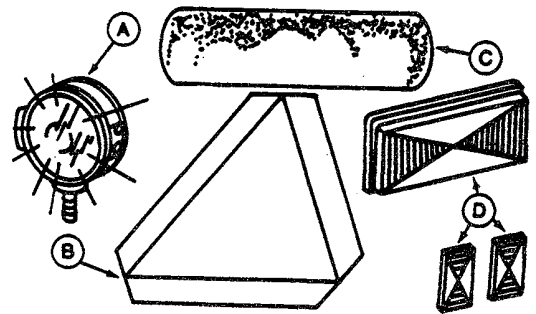
Wear relatively tight and belted clothing to prevent being caught on some part of the machine.



9A8;E19363 N03;722 SAA 230883

USE SAFETY LIGHTS AND DEVICES

When transporting your machine on a road or highway at night or during the day, use necessary lights (A), SMV emblems (B), reflector tape (C) or reflectors (D), for adequate warning to operators of other vehicles. In this regard, check local governmental regulation. These various safety lights and devices are available from your John Deere dealer.



- A—Lights
- B—SMV Emblem
- C—Reflector Tape
- D—Reflectors

7A6;N36564 N01;7440 SAF 111182

N19;05 02 190684

TRANSPORT SAFELY

Be aware of overhead wires and KNOW the transport height and width of your chisel plow.

Before raising and lowering outriggers, know proper outrigger lift procedure. (See Hydraulic Outrigger Lift in Operating the Chisel Plow.)

DO NOT fail to latch the tractor brakes together.

Shift the tractor into a lower gear when transporting down steep slopes or hills.

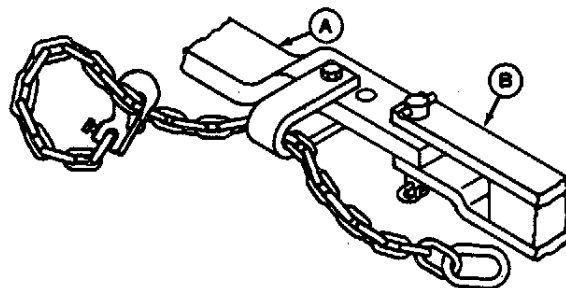
Keep the SMV emblem and reflectors clean and visible from the rear.

Stop slowly.

9A1; N03;1610C A 080584

USE A SAFETY CHAIN

A safety chain will help control drawn equipment (B) should it accidentally separate from the drawbar (A) while transporting. Using the appropriate adapter parts, attach the chain to the tractor drawbar support or other specified anchor location. Provide only enough slack in the chain to permit turning. See your John Deere dealer for a chain with a strength rating greater than the gross weight of the towed machine.

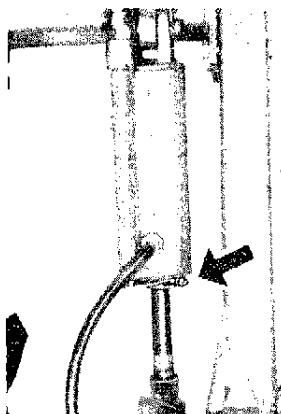


AB6;TS163 053;SA A 120284

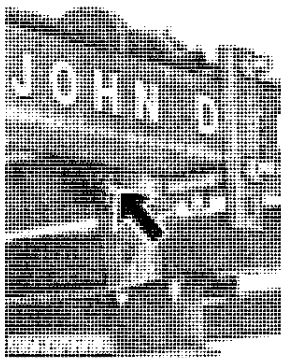
INSTALL LOCKUP PINS OR LOCK CYLINDERS IN TRANSPORT POSITION

Always install lockup pins on vertical fold outrigger lift models.

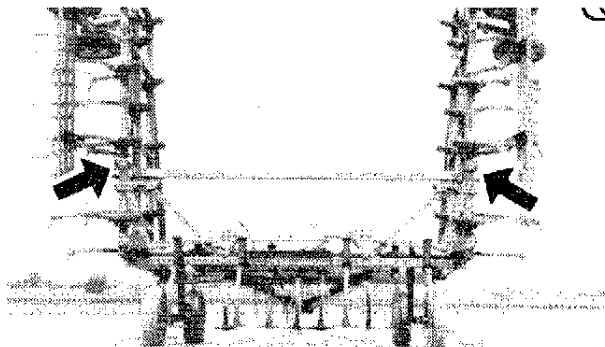
Always move depth control cylinder stop forward to lock the cylinder or install lockup pin on rigid models.



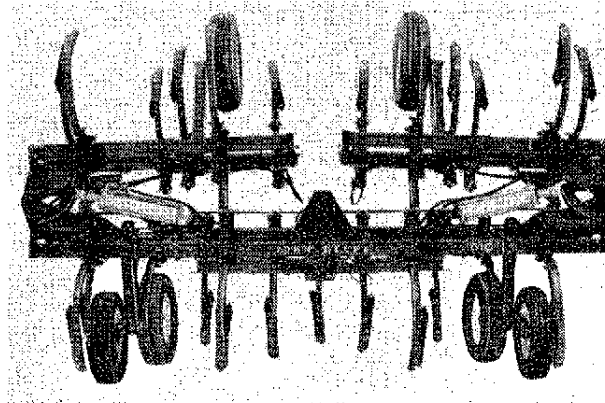
Depth Stop



*11, 13, 15, 17, Ft.
(3.4, 3.9, 4.6 and 5.2 m)*



Vertical Fold



Horizontal Fold

9A1,N78053 I2 N78059 C2 N03;1610C B 080584

AVOID HIGH-PRESSURE FLUIDS

Escaping fluid under pressure can penetrate the skin causing serious injury. Relieve pressure before disconnecting hydraulic or other lines. Tighten all connections before applying pressure. Keep hands and body away from pinholes and nozzles which eject fluids under high pressure. Use a piece of cardboard or paper to search for leaks. Do not use your hand.

If ANY fluid is injected into the skin, it must be surgically removed within a few hours by a doctor familiar with this type of injury or gangrene may result.



7A6;X9811 N01;7440 SAJ 111182

PRACTICE SAFE MAINTENANCE

Do not lubricate, adjust, or clean machine while it is in motion.

Shut off tractor engine and remove key when working on your machine.

Unauthorized modifications to this machine may impair the function and/or safety and affect machine life.

Replace any guards or shields removed for servicing.

8A7; N01;;250C C 121283

Thank you so much for reading.
Please click the “Buy Now!”
button below to download the
complete manual.



After you pay.

You can download the most
perfect and complete manual in
the world immediately.

Our support email:

ebooklibonline@outlook.com