



JD500 TRACTORS



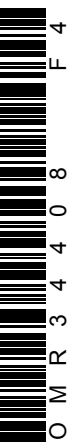
JOHN DEERE

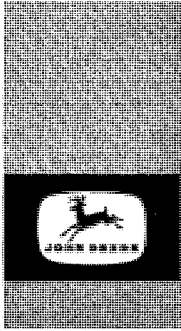
OPERATORS MANUAL JD500 TRACTORS

OMR34408 F4 English

JOHN DEERE WATERLOO WORKS
OMR34408 F4

LITHO IN THE U.S.A.
ENGLISH





TO THE PURCHASER

Your new John Deere JD500 Tractor is an entirely new concept of power. Built to the traditionally high standards of John Deere, this versatile tractor meets today's exacting requirements.

Outstanding ease of operation, the ability to match engine power and speed to the job, operating comfort, hydraulic power when and where you need it, simplicity of lubrication and service, modern styling, and economical, dependable service are all features of this great tractor.

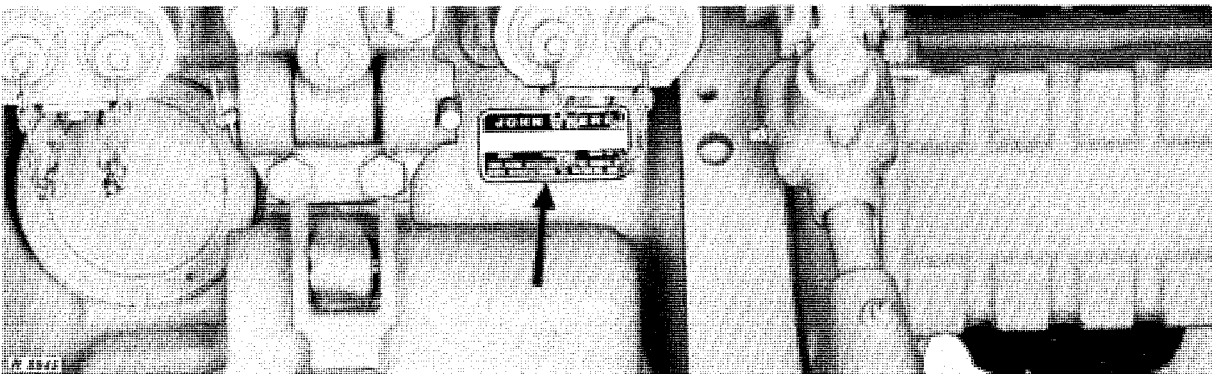
At the time the tractor was delivered, the John Deere dealer discussed with you its safe operation and proper care. However, before putting the tractor to work, read this manual. It contains complete instructions for operating the tractor, caring for it, and taking advantage of its many time- and labor-saving features. After reading this manual, keep it in a convenient place together with the tractor parts list and any equipment operator's manual and parts list that are used with the tractor. This will assure you quick and easy reference if questions arise concerning operation, lubrication, or service.

References to the right or left side of the tractor are as viewed from behind the tractor.

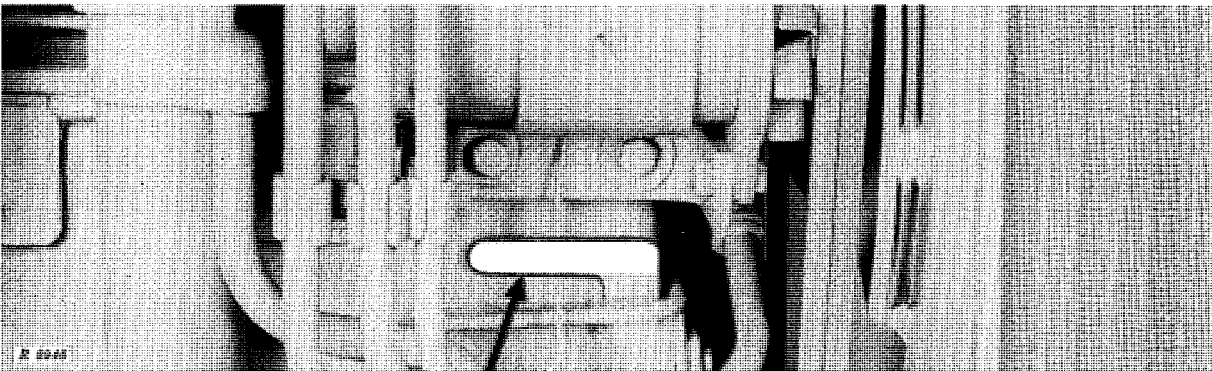
The service policy which you received with your tractor certifies that the tractor was properly inspected and prepared for delivery by your John Deere dealer. Keep this policy in a safe place and present it to the dealer whenever services which it authorizes are required.

Your John Deere dealer wants to help you get the most value from your tractor. His skilled servicemen can handle every job efficiently. These men are trained in modern service methods; they have all necessary tools and equipment. If new parts are needed, only genuine John Deere parts will be installed. These parts are exact duplicates of the originals, made from the same patterns and of the same high-quality materials.

When in need of new parts, be prepared to furnish your dealer with the engine serial number, the tractor chassis serial number, and the tractor series number. For ready reference, locate and record the serial numbers in the spaces provided in the following illustrations.



Record Tractor Chassis Serial Number

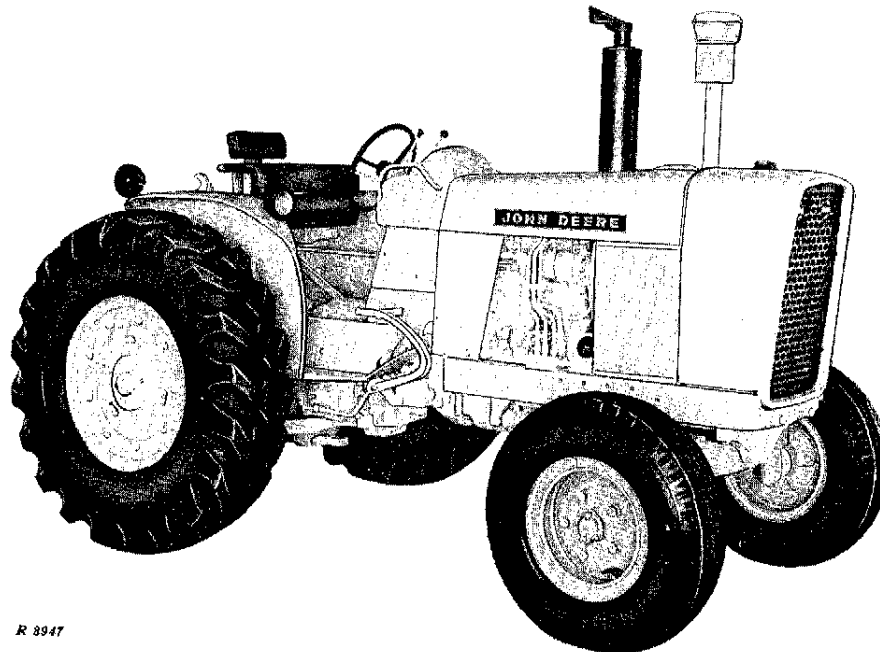


Record Engine Serial Number



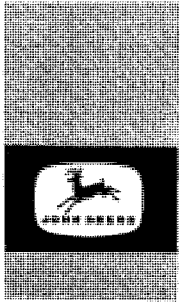
SPECIFICATIONS

HORSEPOWER (at 2500 rpm)		
Observed net engine flywheel	<u>Diesel</u> 80.0 h.p.	<u>Gasoline</u> 77.7 h.p.
ENGINE:		
Type	4-cylinder, in-line, valve-in-head	
Engine speeds:		
Idle for engine shutoff	420 rpm
Normal slow idle	600 rpm	650 rpm
Working speeds	1500 to 2500 rpm	1500 to 2500 rpm
Bore and stroke	4-1/4 in. x 4-3/4 in.	4-1/4 in. x 4 in.
Displacement	270 cu. in.	227 cu. in.
Compression ratio	16.5 to 1	7.5 to 1
Firing order	1-3-4-2	1-3-4-2
Intake valve clearance	0.018 in.	0.015 in.
Exhaust valve clearance	0.018 in.	0.028 in.
Injection pump timing	TDC
Distributor timing	20 degrees BTDC at 2200 rpm
Distributor point gap	0.022 in.
Spark plug gap	0.025 in.
ELECTRICAL SYSTEM:		
Starter, generator voltage	24 volts	12 volts
Lights, accessory voltage	12 volts	12 volts
12-volt battery, 78-plate, 75 ampere-hour	Two (connected in series)	One



R 3947

John Deere JD500 Tractor with Diesel Engine and Power Shift Transmission



CONTENTS

SPECIFICATIONS	2
CONTROLS AND INSTRUMENTS	4
OPERATION	5
SAFETY RULES	32
FUELS AND LUBRICANTS	34
LUBRICATION AND PERIODIC SERVICE .	38
SERVICE	48
TRACTOR STORAGE	65
TROUBLE SHOOTING	66
INDEX	71

Thank you so much for reading.
Please click the “Buy Now!”
button below to download the
complete manual.



After you pay.

You can download the most
perfect and complete manual in
the world immediately.

Our support email:

ebooklibonline@outlook.com