

**Series 300
3164, 3179, 4219,
4239, 4276, 6329,
6359 and 6414
OEM Diesel Engines**



JOHN DEERE

OPERATORS MANUAL

Series 300 3164, 3179, 4219, 4239, 4276, 6329,
6359 and 6414 OEM Diesel Engines

OMRG16407 Issue J4 English

Deere Power Systems Group
OMRG16407 Issue J4
(This manual replaces OMRG16407 E1)

LITHO IN U.S.A.
ENGLISH



Introduction

READ THIS MANUAL carefully to learn how to operate and service your engine correctly. Failure to do so could result in personal injury or equipment damage.

THIS MANUAL SHOULD BE CONSIDERED a permanent part of your engine and should remain with the engine when you sell it.

MEASUREMENTS in this manual are given in both metric and customary U.S. unit equivalents. Use only correct replacement parts and fasteners. Metric and inch fasteners may require a specific metric or inch wrench.

RIGHT-HAND AND LEFT-HAND sides are determined by standing at the drive or flywheel end (rear) of the engine and facing toward the front of the engine.

WRITE ENGINE SERIAL NUMBERS and the option codes in the spaces indicated in the Record Keeping Section. Accurately record all the numbers. Your dealer also needs these numbers when you order parts. File the identification numbers in a secure place off the engine.

SETTING FUEL DELIVERY beyond published factory specifications or otherwise overpowering will result in loss of warranty protection for this engine.

CERTAIN ENGINE ACCESSORIES such as radiator, air cleaner, and instruments are optional equipment on John Deere OEM Engines. These accessories may be provided by the equipment manufacturer instead of John Deere. This operator's manual applies only to the engine and those options available through the John Deere distribution network.

CALIFORNIA PROPOSITION 65 WARNING

Diesel engine exhaust and some of its constituents are known to the State of California to cause cancer, birth defects and other reproductive harm.

Engine Owner

JOHN DEERE ENGINE OWNER:

Don't wait until you need warranty or other service to meet your local John Deere Engine Distributor or Service Dealer.

Learn who he is and where he is. At your first convenience, go meet him. He'll want to get to know you and to learn what your needs might be.

UTILISATEURS DE MOTEURS JOHN DEERE:

N'attendez pas d'être obligé d'avoir recours à votre Concessionnaire ou Point de Service le plus proche pour vous adresser à lui.

Renseignez-vous dès que possible pour l'identifier et le localiser. A la première occasion, prenez contact avec lui et faites-vous connaître. Il sera lui aussi heureux de faire votre connaissance et de savoir que vous pourrez compter sur lui le moment venu.

AN DEN BESITZER DES JOHN DEERE MOTORS:

Warten Sie nicht auf einen evt. Reparaturfall um den nächstgelegenen John Deere Händler kennen zu lernen.

Machen Sie sich bei ihm bekannt und nutzen Sie sein "Service Angebot".

PROPRIETARIO DEL MOTORE JOHN DEERE:

Non aspetti fino a quando ha bisogno della garanzia o di un altro tipo di assistenza per incontrarsi con il Suo Concessionario che fornisce l'assistenza tecnica.

Impari a conoscere chi è e dove si trova. Alla Sua prima occasione cerchi d'incontrarlo. Egli desidera farsi conoscere e conoscere le Sue necessità.

PROPIETARIO DE EQUIPO JOHN DEERE:

No espere hasta necesitar servicio de garantía o de otro tipo para conocer a su Distribuidor de Motores John Deere o al Concesionario de Servicio.

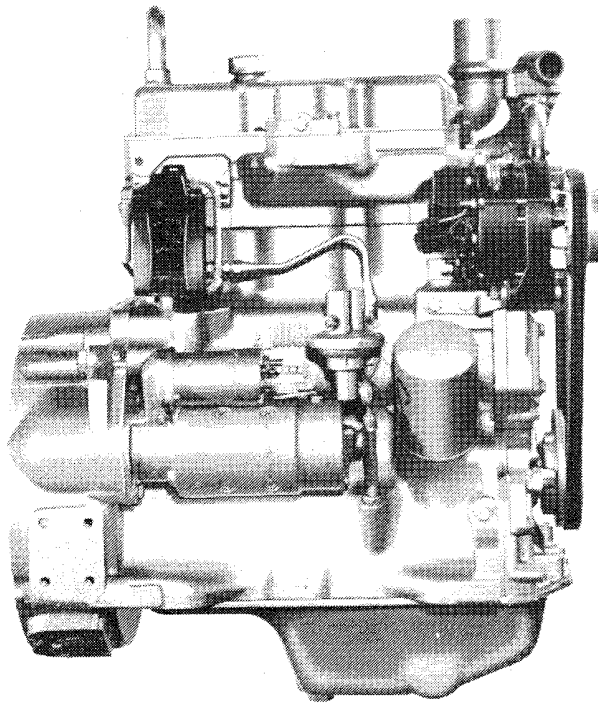
Entérese de quién es, y dónde está situado. Cuando tenga un momento, vaya a visitarlo. A él le gustará conocerlo, y saber cuáles podrían ser sus necesidades.

JOHN DEERE MOTORÄGARE:

Vänta inte med att besöka Din John Deere återförsäljare till dess att Du behöver service eller garanti reparation.

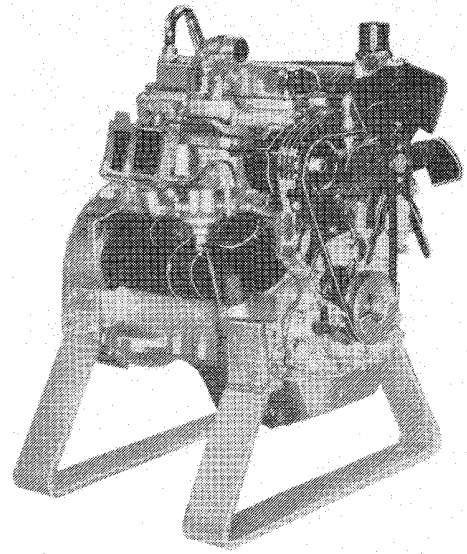
Bekanta Dig med var han är och vem han är. Tag första tillfälle att besöka honom. Han vill också träffa Dig för att få veta vad Du behöver och hur han kan hjälpa Dig.

Identification Views



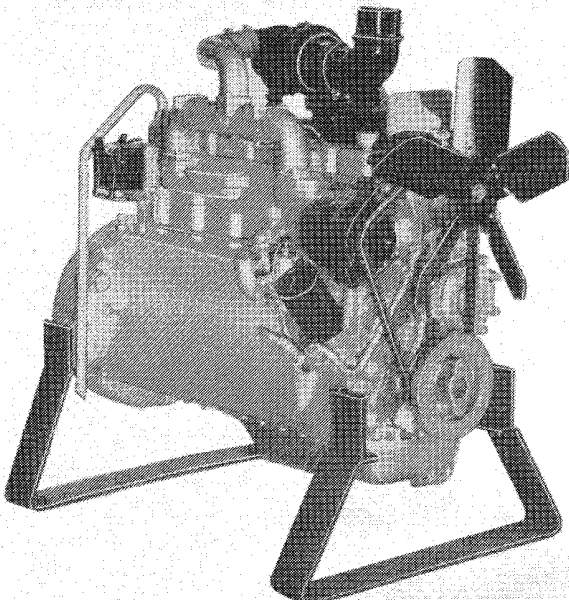
3179D Engine

RG4872
-UN-19JAN90



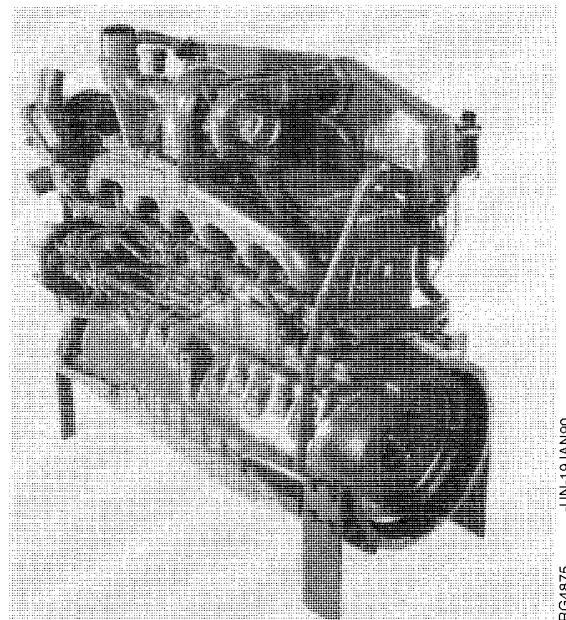
4276D Engine

RG4873
-UN-19JAN90



6359T Engine

RG4874
-UN-19JAN90



6359A Engine

RG4875
-UN-19JAN90

Contents

Page	Page
Record Keeping	
Engine Serial Number Plate	1
Record Engine Serial Number	1
Engine Option Codes	2
Record PTO Serial Number	4
Record Fuel Injection Pump Model Number	4
Safety	5
Fuels, Lubricants, and Coolant	
Diesel Fuel	13
Diesel Fuel Storage	14
Filling Fuel Tank	14
Minimizing the Effect of Cold Weather on Diesel Engines	15
Engine Break-In Oil	16
Diesel Engine Oil	17
OILSCAN® and CoolScan™	18
Alternative and Synthetic Lubricants	18
Grease	19
Lubricant Storage	19
Engine Coolant Requirements	20
Recommended Engine Coolant	22
Engine Coolant Specifications	23
Replenishing Supplemental Coolant Additives (SCA's) Between Changes	25
Disposing of Coolant	26
Engine Operating Guidelines	
Instrument (Gauge) Panel	27
Normal Engine Operation	28
Break-In Service	29
Daily Prestarting Checks	31
Auxiliary Drive Limitations	33
Starting the Engine	33
Cold Weather Operation	35
Warming Engine	36
Changing Engine Speed—Standard (Mechanical) Governor	37
Standby Power Units	37
Idling Engine	37
Stopping the Engine	38
Using a Booster Battery or Charger	39
Lubrication and Maintenance	
Observe Service Intervals	40
Use Correct Fuels, Lubricants, and Coolant	40
Lubrication and Maintenance Service Interval Chart	41
Lubrication and Maintenance/100 Hour	
Lubricate PTO Clutch Fittings	42
Servicing Fire Extinguisher	42
Lubrication and Maintenance/250 Hour	
Service Battery	43
Change Engine Oil and Filter	45
Fan and Alternator Belts Tension or Replacement	47
Check PTO Clutch Adjustment	48
Lubrication and Maintenance/400 Hour	
Check and Adjust Engine Valve Clearance	49
Lubrication & Maintenance/600 Hour/12 Month	
Lubricate PTO Clutch Internal Levers and Linkage	52
Clean Crankcase Vent Tube	52
Check Air Intake Hoses	53
Clean Fuel Pump Strainer (Corona or BCD)	53
Clean Fuel Pump Strainer (Sofabex and Early AC)	54
Replace Fuel Filter	54
Check Effectiveness of Coolant Solution	55
Adding Supplemental Coolant Additives (SCA's)	56
Check Cooling System	57

Continued on next page

All information, illustrations and specifications in this manual are based on the latest information available at the time of publication. The right is reserved to make changes at any time without notice.

OMRG16407 J4-19-25OCT94

COPYRIGHT® 1994
DEERE & COMPANY
Moline, Illinois
All rights reserved
A John Deere ILLUSTRATION™ Manual

Contents

	Page		Page
Check Air Intake System	57	Specifications	
Replace Air Cleaner Elements	58	General OEM Engine Specifications	93
Lubrication & Maintenance/1200 Hr/24 Mo		Dubuque Engine Speeds	97
Check and Adjust Engine Speeds	59	Saran Fuel Injection Specifications	98
Adjust Variable Speed on Generator Set		Engine Crankcase Oil Fill Quantities	99
Engines	59	Inch Series Torque Chart	102
Adjust Engine Valve Clearance	60	Metric Series Torque Chart	103
Check Fuel Injection System	60	Lubrication and Maintenance Records	
Inspect Turbocharger	61	Using Lubrication and Maintenance	
Check Crankshaft Vibration Damper		Records	104
(6-Cylinder Engines Only)	61	Lubrication and Maintenance Records	104
Pressure Test Cooling System and			
Radiator Cap	63	Index	
Flush Cooling System and Replace			
Thermostats	64		
Service As Required			
Additional Service Information	66		
Checking Coolant Level	66		
Adding Coolant	67		
Removing and Replacing Air Cleaner			
Filter Elements	68		
Inspecting Primary Filter Element	69		
Cleaning Primary Filter Element	70		
Washing Primary Filter Element	71		
Do Not Modify Fuel System	72		
Bleeding the Fuel System	73		
Replace Fan and Alternator Belts	74		
Power Take-Off (PTO) Clutch	75		
Check Fuses	75		
Troubleshooting			
General Troubleshooting Information	77		
Reading a Wiring Diagram	78		
Engine Wiring Diagram Legend	80		
Wiring Diagram—North American Series			
300 Engines	81		
Engine Wiring Diagram Legend	82		
Wiring Diagram—European (Saran) Series			
300 Engines	83		
Engine Troubleshooting	84		
Electrical System Troubleshooting	88		
Seasonal Engine Storage			
Use AR41785 Engine Storage Kit	90		
Preparing Engine For Storage	91		
Removing Engine From Storage	92		

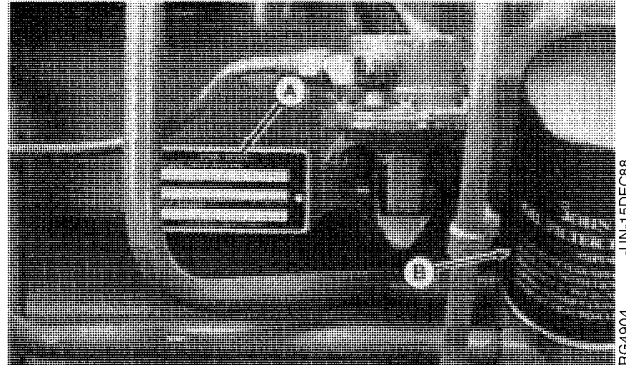
Record Keeping

ENGINE SERIAL NUMBER PLATE

Each engine has a 13-digit John Deere engine serial number. The first two digits identify the factory that produced the engine:

- “T0” indicates the engine was built in Dubuque, Iowa
- “CD” indicates the engine was built in Saran, France

Your engine’s serial number plate (A) is located on right-hand side of cylinder block near the oil filter housing (B).



RG,18293,SNPLTE-19-09AUG94

RECORD ENGINE SERIAL NUMBER

Your engine will have a serial number plate.

Record all of the numbers and letters found on your engine serial number plate in the spaces provided below.

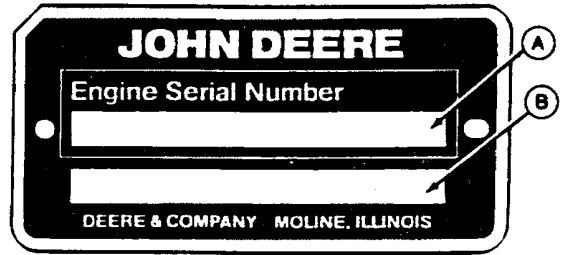
This information is very important for repair parts or warranty information.

Engine Serial Number (A)

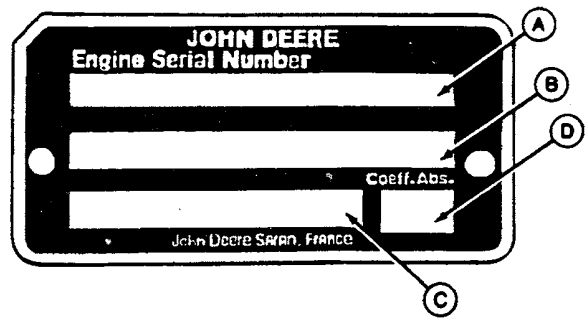
Application Data (B)

European Customer Model/Application Data (C)

Coefficient of Absorption Value (D)



Dubuque Serial Number Plate



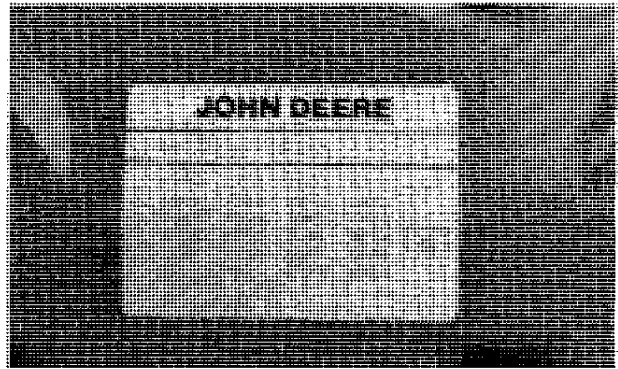
Saran Serial Number Plate

RG,SER300I,5 -19-20OCT94

ENGINE OPTION CODES

J O H N D E E R E		11/05/94
Commande:	182838760	Base code: 147AA Load: 654150
-	18	1101- 1202- 1301- 1406- 1501- 1603- 1701-
1902-	2004-	2109- 2204- 2403- 2802- 2902- 3001- 3115-
3519-	3601-	3703- 3901- 4005- 4199- 4398- 4499- 4599-
4603-	4708-	47AA 4802- 4901- 5001- 5101- 5299- 5525-
5601-	5906-	6206- 6699- 6903- 7699- 9801-
Controle par (inspected by):		***

Saran Option Code Label



Dubuque Option Code Label

In addition to the serial number plate, OEM engines have an engine option code label affixed to the rocker arm cover. These codes indicate which of the engine options were installed on your engine at the factory. When in need of parts or service, furnish your authorized servicing dealer or engine distributor with these numbers.

On Saran-built engines, the engine option code label includes an engine base code. This base code must also be recorded along with the option codes. At times it will be necessary to furnish this base code to differentiate two identical option codes for the same engine model.

The first two digits of each code identify a specific group, such as alternators. The last two digits of each code identify one specific option provided on your engine, such as a 12-volt, 55-amp alternator.

If an engine is ordered without a particular component, the last two digits of that functional group option code will be nines (99). The following list shows only the first two digits of the code numbers. For future reference such as ordering repair parts, it is important to have these code numbers available. To ensure this availability, enter the third and fourth digits shown on your engine option code label in the spaces provided on the following page.

NOTE: Your engine option code label may not contain all option codes if an option has been added after the engine left the producing factory.

JUN-21JUN94
FG7222

ENGINE OPTION CODES—CONTINUED

Engine Base Code: _____

Option Codes	Description	Option Codes	Description
11 _____	Rocker Arm Cover	40 _____	Dipstick
12 _____	Oil Filler	41 _____	Belt Driven Front Auxiliary Drive
13 _____	Crankshaft Pulley	43 _____	Air Inlet Heater
14 _____	Flywheel Housing	44 _____	Timing Gear Cover With Gears
15 _____	Flywheel	45 _____	Balancers For 4-Cylinder Engines
16 _____	Injection Pump	46 _____	Cylinder Block With Liners and Camshaft
17 _____	Air Inlet	47 _____	Crankshaft and Bearings
18 _____	Air Cleaner	48 _____	Connecting Rods and Pistons
19 _____	Oil Pan	49 _____	Valve Actuating Mechanisms
20 _____	Water Pump	50 _____	Oil Pumps
21 _____	Thermostat Cover	51 _____	Cylinder Head With Valves
22 _____	Thermostat	52 _____	Auxiliary Gear Drive
23 _____	Fan Drive	55 _____	Shipping Stand
24 _____	Fan Belt	56 _____	Paint Option
25 _____	Fan	59 _____	Oil Cooler and Filter
27 _____	Radiator	62 _____	Alternator Mounting
28 _____	Exhaust Manifold	64 _____	Exhaust Elbow
29 _____	Ventilator System	65 _____	Turbocharger
30 _____	Starting Motor	66 _____	Temperature Switch
31 _____	Alternator	69 _____	Engine Serial Number PLate
32 _____	Instrument Panel	75 _____	Air Restriction Indicator
35 _____	Fuel Filter	76 _____	Oil Pressure Switch
36 _____	Front Plate	91 _____	Special Equipment (Factory Installed)
37 _____	Fuel Transfer Pump	97 _____	Special Equipment (Field Installed)
39 _____	Thermostat Housing	98 _____	Shipping

Record Keeping

RECORD PTO SERIAL NUMBER

Serial number and model number are located on cover plate (Bold Arrow) of PTO housing. Record the numbers in the following spaces:

Serial Number _____

Model Number _____



RG4622 -JUN-15DEC88

S11,OMSN,N -19-26FEB93

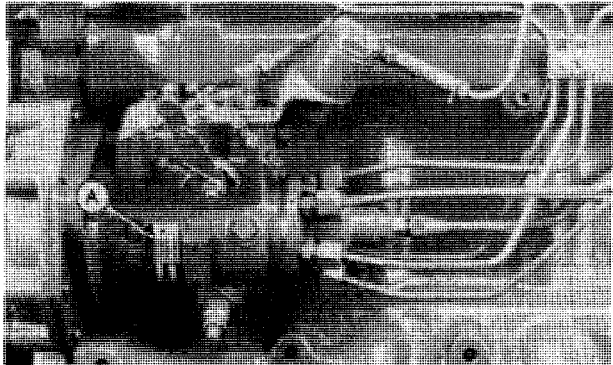
RECORD FUEL INJECTION PUMP MODEL NUMBER

Record the fuel injection pump model and serial information found on the serial number plate (A).

Model No. _____ RPM _____

Manufacturer's No. _____

Serial No. _____



PG-400B -JUN-15DEC88

S11,OMSN,O -19-02JUL86

Safety

RECOGNIZE SAFETY INFORMATION

This is the safety-alert symbol. When you see this symbol on your machine or in this manual, be alert to the potential for personal injury.

Follow recommended precautions and safe operating practices.



DX,ALERT -19-03MAR93

T81389 -JUN-07DEC88

UNDERSTAND SIGNAL WORDS

A signal word—DANGER, WARNING, or CAUTION—is used with the safety-alert symbol. DANGER identifies the most serious hazards.

DANGER or WARNING safety signs are located near specific hazards. General precautions are listed on CAUTION safety signs. CAUTION also calls attention to safety messages in this manual.



DX,SIGNAL -19-03MAR93

TS187 -19-30SEP88

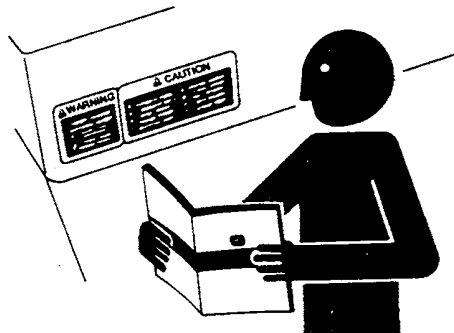
FOLLOW SAFETY INSTRUCTIONS

Carefully read all safety messages in this manual and on your machine safety signs. Keep safety signs in good condition. Replace missing or damaged safety signs. Be sure new equipment components and repair parts include the current safety signs. Replacement safety signs are available from your John Deere dealer.

Learn how to operate the machine and how to use controls properly. Do not let anyone operate without instruction.

Keep your machine in proper working condition. Unauthorized modifications to the machine may impair the function and/or safety and affect machine life.

If you do not understand any part of this manual and need assistance, contact your John Deere dealer.



DX,READ -19-03MAR93

TS201 -JUN-23AUG88



PREVENT BYPASS STARTING

Avoid possible injury or death from engine runaway.

Do not start engine by shorting across starter terminal. Engine will start with PTO engaged if normal circuitry is bypassed.

Start engine only from operator's station with PTO disengaged or in neutral.



RG,BYPAS1 -19-19MAR91

RG5419 -UN-28FEB89

HANDLE FUEL SAFELY—AVOID FIRES

Handle fuel with care: it is highly flammable. Do not refuel the machine while smoking or when near open flame or sparks.

Always stop engine before refueling machine. Fill fuel tank outdoors.

Prevent fires by keeping machine clean of accumulated trash, grease, and debris. Always clean up spilled fuel.



DX,FIRE1 -19-03MAR93

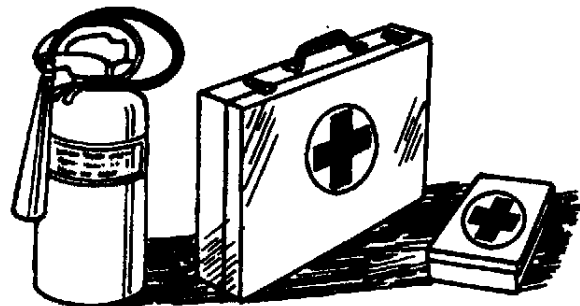
TS202 -UN-23AUG88

PREPARE FOR EMERGENCIES

Be prepared if a fire starts.

Keep a first aid kit and fire extinguisher handy.

Keep emergency numbers for doctors, ambulance service, hospital, and fire department near your telephone.



DX,FIRE2 -19-03MAR93

TS201 -UN-23AUG88

Buy Now



Our support email:

ebooklibonline@outlook.com