

# 6076 Marine Engines



JOHN DEERE

## OPERATORS MANUAL 6076 Marine Engines

OMRG20145 Issue D2 English

Deere Power Systems Group  
OMRG20145 Issue D2

LITHO IN U.S.A.  
ENGLISH



**JOHN DEERE ENGINE OWNER:**

Don't wait until you need warranty or other service to meet your local John Deere Engine Distributor or Service Dealer.

Learn who he is and where he is. At your first convenience, go meet him. He'll want to get to know you and to learn what your needs might be.

**UTILISATEURS DE MOTEURS JOHN DEERE:**

N'attendez pas d'être obligé d'avoir recours à votre Concessionnaire ou Point de Service le plus proche pour vous adresser à lui.

Renseignez-vous dès que possible pour l'identifier et le localiser. À la première occasion, prenez contact avec lui et faites-vous connaître. Il sera lui aussi heureux de faire votre connaissance et de savoir que vous pourrez compter sur lui le moment venu.

**AN DEN BESITZER DES JOHN DEERE MOTORS:**

Warten Sie nicht auf einen evt. Reparaturfall um den nächstgelegenen John Deere Händler kennen zu lernen.

Machen Sie sich bei ihm bekannt und nutzen Sie sein "Service Angebot".

**PROPRIETARIO DEL MOTORE JOHN DEERE:**

Non aspetti fino a quando ha bisogno della garanzia o di un altro tipo di assistenza per incontrarsi con il Suo Concessionario che fornisce l'assistenza tecnica.

Impari a conoscere chi è e dove si trova. Alla Sua prima occasione cerchi d'incontrarlo. Egli desidera farsi conoscere e conoscere le Sue necessità.

**PROPIETARIO DE EQUIPO JOHN DEERE:**

No espere hasta necesitar servicio de garantía o de otro tipo para conocer a su Distribuidor de Motores John Deere o al Concesionario de Servicio.

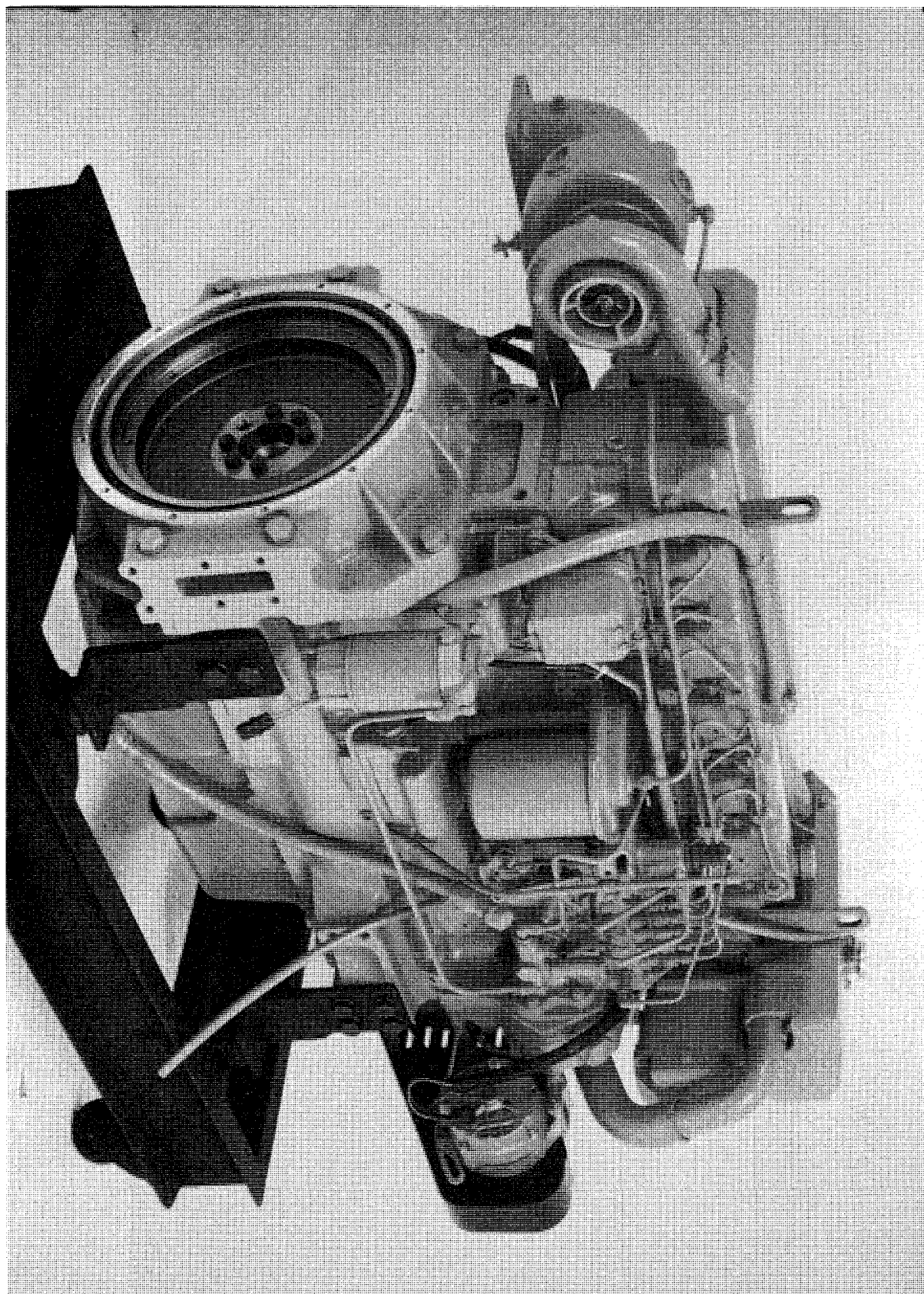
Entérese de quién es, y dónde está situado. Cuando tenga un momento, vaya a visitarlo. A él le gustará conocerlo, y saber cuáles podrían ser sus necesidades.

**JOHN DEERE MOTORÄGARE:**

Vänta inte med att besöka Din John Deere återförsäljare till dess att Du behöver service eller garanti reparation.

Bekanta Dig med var han är och vem han är. Tag första tillfälle att besöka honom. Han vill också träffa Dig för att få veta vad Du behöver och hur han kan hjälpa Dig.

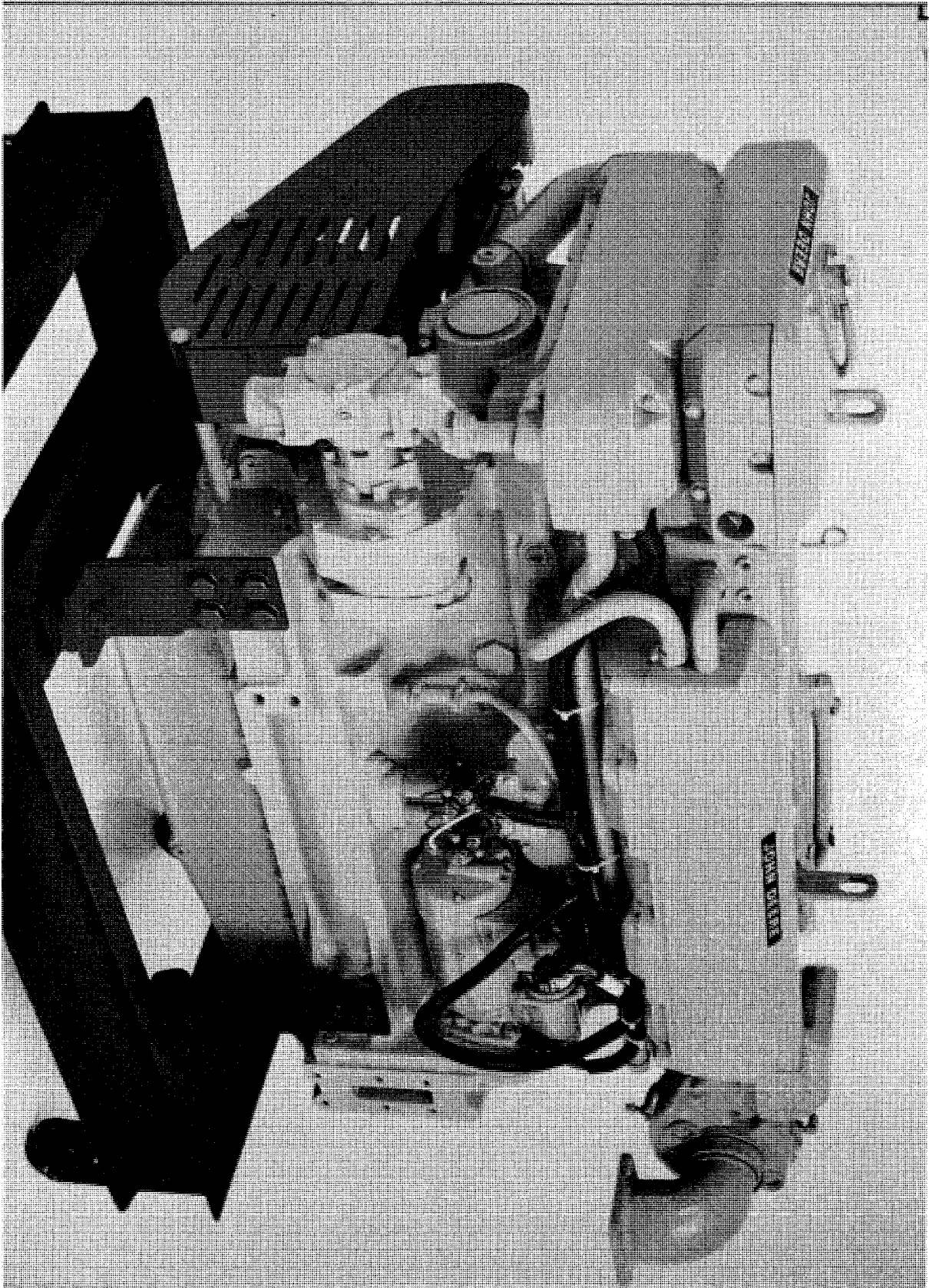
# Identification Views



RG6141  
-JUN-23MAR92

RG,20145,1 -19-20MAR92

Identification Views



FG6142 -JUN-23MAR82

RG,20145,2 -18-20MAR82

*Identification Views*

**For complete service information also see:**

6076 Engines, Sserial Number ( —499999). . . . .  
.CTM6  
Engine Accessories. . . . .CTM11

# Contents

Page	Page		
<b>Safety</b> . . . . .	1	<b>Service Batteries</b> . . . . .	41
<b>Fuels, Lubricants, and Coolant</b>		<b>Lubrication &amp; Maintenance/600 Hr/6-Month</b>	
Diesel Fuel . . . . .	8	Clean Crankcase Vent Tube . . . . .	42
Diesel Fuel Storage . . . . .	9	Check Air Intake Hoses . . . . .	42
Filling Fuel Tank . . . . .	10	Replace Fuel Filter Element . . . . .	43
Minimizing Effect of Cold Weather on		Replace Fuel/Water Separator Filter	
Diesel Engine . . . . .	11	Element . . . . .	45
Diesel Engine Oil . . . . .	12	Replace Air Cleaner . . . . .	46
OILSCAN™ and COOLSCAN™ . . . . .	13	Check Effectiveness of Coolant Solution . . . . .	47
Synthetic Lubricants . . . . .	13	Adding Supplemental Coolant Additives . . . . .	47
Lubricant Storage . . . . .	13	Check Cooling System . . . . .	48
Engine Coolant Recommendations . . . . .	14	Remove, Inspect, and Clean Heat	
Engine Coolant Requirements . . . . .	15	Exchanger Core . . . . .	49
<b>Engine Operating Guidelines</b>		Install Heat Exchanger Core . . . . .	51
Break-In Service . . . . .	17	<b>Lubrication &amp; Maintenance/1200 Hr/1-Yr</b>	
Daily Prestarting Checks . . . . .	20	Check and Adjust Engine Speeds . . . . .	52
Auxiliary Drive Gear Limitations . . . . .	22	Perform Engine Tune-Up . . . . .	52
Standby Power Units . . . . .	22	Check and Adjust Engine Valve	
Engine Instrument (Gauge) Panel . . . . .	24	Clearance . . . . .	53
Engine Starting Instructions . . . . .	26	Flush Cooling System and Replace	
Stopping the Engine . . . . .	29	Thermostats . . . . .	55
Using a Booster Battery or Charger . . . . .	30	Check Overall Fuel Injection System . . . . .	58
Normal Engine Operation . . . . .	31	Inspect Turbocharger . . . . .	58
Engine Speeds . . . . .	32	Pressure Test Cooling System Pressure	
<b>Lubrication and Maintenance</b>		Cap . . . . .	59
Observe Service Intervals . . . . .	33	Check Crankshaft Vibration Damper . . . . .	59
Use Correct Fuels, Lubricants and		Inspect Sea Water Pump and Replace	
Coolant . . . . .	33	Impeller . . . . .	60
Lubrication and Maintenance Service		<b>Troubleshooting</b>	
Interval Chart . . . . .	34	Troubleshooting . . . . .	63
<b>Lubrication &amp; Maintenance/250 Hr/3-Month</b>		Wiring Diagram—Propulsion Engine	
Inspect and Replace Zinc Plugs . . . . .	35	Wiring Harness . . . . .	64
Change Engine Oil and Filter . . . . .	36	Wiring Diagram—Propulsion Engine	
Check V-Belt Tension . . . . .	38	Control Panel . . . . .	65
V-Belt Tension Specifications . . . . .	39	6076 Keel Coled Engine Coolant Flow . . . . .	67
Service Fire Extinguisher . . . . .	39		
Check Engine Mounts . . . . .	40		

Continued on next page

*All information, illustrations and specifications in this manual are based on the latest information available at the time of publication. The right is reserved to make changes at any time without notice.*

OMRG20145 D2-19-20MAR92

COPYRIGHT©1992  
DEERE & COMPANY  
Moline, Illinois  
All rights reserved  
A John Deere ILLUSTRATION™ Manual

**Buy Now**



Our support email:

[ebooklibonline@outlook.com](mailto:ebooklibonline@outlook.com)