

**SERIES 500
6101 OEM DIESEL
ENGINES 1996 EPA
CERTIFICATION
LEVELS (U.S.A.)**



JOHN DEERE

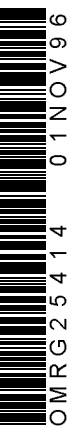
OPERATORS MANUAL

**SERIES 500 6101 OEM DIESEL ENGINES
1996 EPA CERTIFICATION LEVELS (U.S.A.)**

OMRG25414 (01NOV96) English

**DEERE POWER SYSTEMS GROUP
OMRG25414 (01NOV96)**

LITHO IN THE U.S.A.
ENGLISH



Introduction

READ THIS MANUAL **carefully** to learn how to operate and service your **engine** correctly. Failure to do so could result in **personal** injury or equipment damage.

THIS MANUAL **SHOULD BE CONSIDERED** a permanent part of **your** engine and should remain with the engine when **you** sell it.

MEASUREMENTS IN THIS MANUAL are given in both metric and **customary** U.S. unit equivalents. Use only correct replacement parts and fasteners. Metric and inch fasteners **may** require a specific metric or inch wrench.

RIGHT-HAND AND LEFT-HAND sides are determined by standing at the **drive** or flywheel end (rear) of the engine and facing **toward** the front of the engine.

WRITE ENGINE SERIAL NUMBERS and option codes in the spaces indicated in the Record Keeping Section. Accurately record all the numbers. Your dealer also needs these numbers when you order parts. File the identification numbers in a secure place off the engine.

SETTING FUEL DELIVERY beyond published factory specifications or otherwise overpowering will result in loss of warranty protection for this engine.

CERTAIN ENGINE ACCESSORIES such as radiator, air cleaner, and instruments are optional equipment on John Deere OEM Engines. These accessories may be provided by the equipment manufacturer instead of John Deere. This operator's manual applies only to the engine and those options available through the John Deere distribution network.

CALIFORNIA PROPOSITION 65 WARNING

Diesel engine exhaust and some of its constituents are known to the State of California to cause cancer, birth defects and other reproductive harm.

JOHN DEERE ENGINE OWNER:

Don't wait until you need warranty or other service to meet your local John Deere Engine Distributor or Service Dealer.

Learn who he is and where he is. At your first convenience, go meet him. He'll want to get to know you and to learn what your needs might be.

UTILISATEURS DE MOTEURS JOHN DEERE:

N'attendez pas d'être obligé d'avoir recours à votre Concessionnaire ou Point de Service le plus proche pour vous adresser à lui.

Renseignez-vous dès que possible pour l'identifier et le localiser. A la première occasion, prenez contact avec lui et faites-vous connaître. Il sera lui aussi heureux de faire votre connaissance et de savoir que vous pourrez compter sur lui le moment venu.

AN DEN BESITZER DES JOHN DEERE MOTORS:

Warten Sie nicht auf einen evt. Reparaturfall um den nächstgelegenen John Deere Händler kennen zu lernen.

Machen Sie sich bei ihm bekannt und nutzen Sie sein "Service Angebot".

PROPRIETARIO DEL MOTORE JOHN DEERE:

Non aspetti fino a quando ha bisogno della garanzia o di un altro tipo di assistenza per incontrarsi con il Suo Concessionario che fornisce l'assistenza tecnica.

Impari a conoscere chi è e dove si trova. Alla Sua prima occasione cerchi d'incontrarlo. Egli desidera farsi conoscere e conoscere le Sue necessità.

PROPIETARIO DE EQUIPO JOHN DEERE:

No espere hasta necesitar servicio de garantía o de otro tipo para conocer a su Distribuidor de Motores John Deere o al Concesionario de Servicio.

Entérese de quién es, y dónde está situado. Cuando tenga un momento, vaya a visitarlo. A él le gustará conocerlo, y saber cuáles podrían ser sus necesidades.

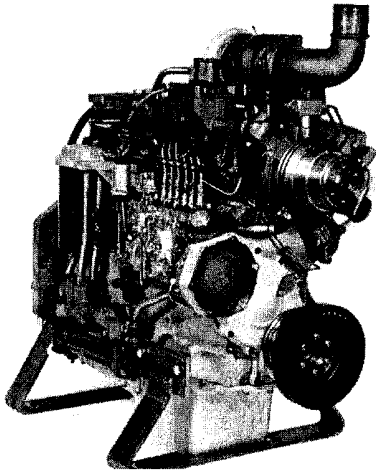
JOHN DEERE MOTORÄGARE:

Vänta inte med att besöka Din John Deere återförsäljare till dess att Du behöver service eller garanti reparation.

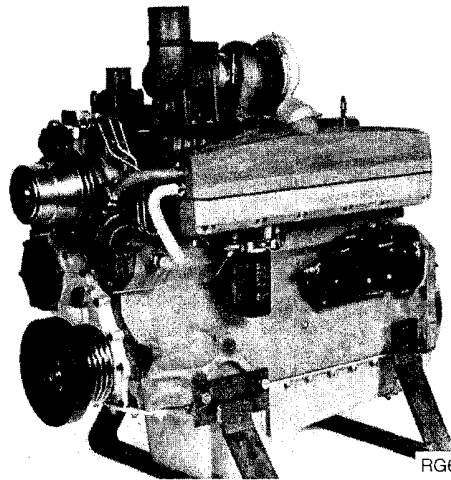
Bekanta Dig med var han är och vem han är. Tag första tillfälle att besöka honom. Han vill också träffa Dig för att få veta vad Du behöver och hur han kan hjälpa Dig.

Identification Views

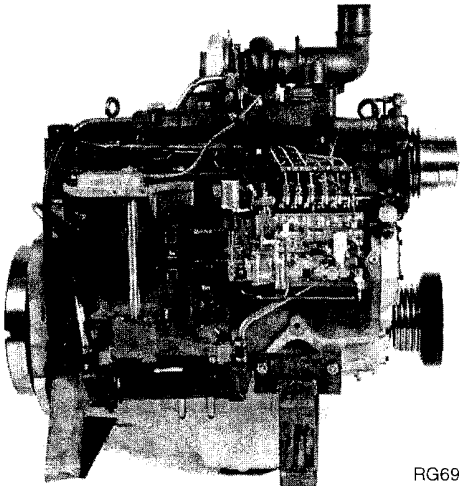
6101AF010 ENGINE



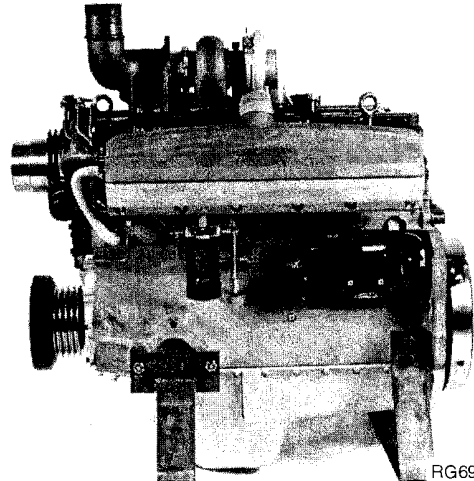
RG6914



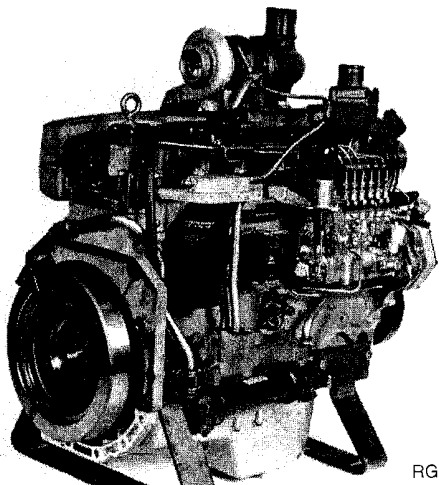
RG6915



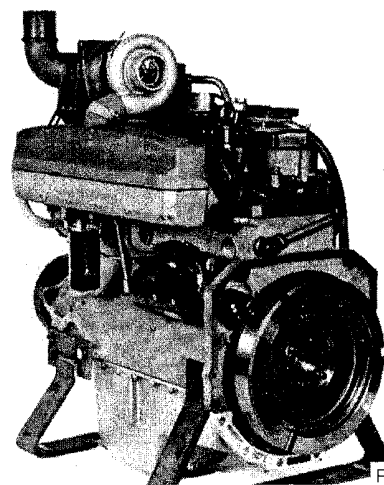
RG6916



RG6917



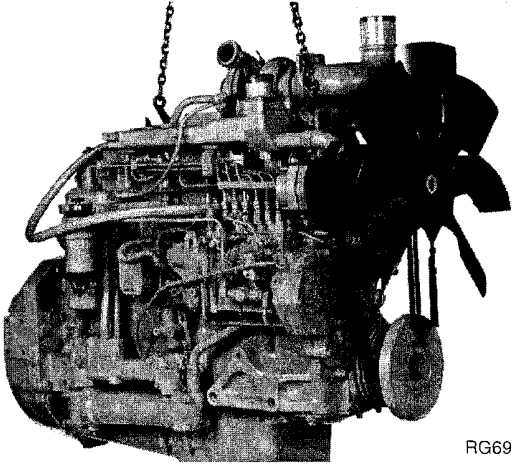
RG6918



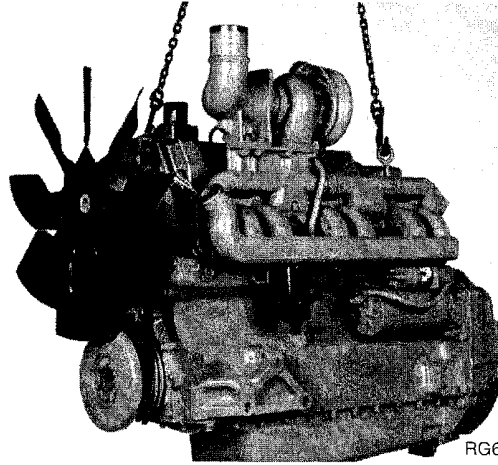
RG6919

Identification Views

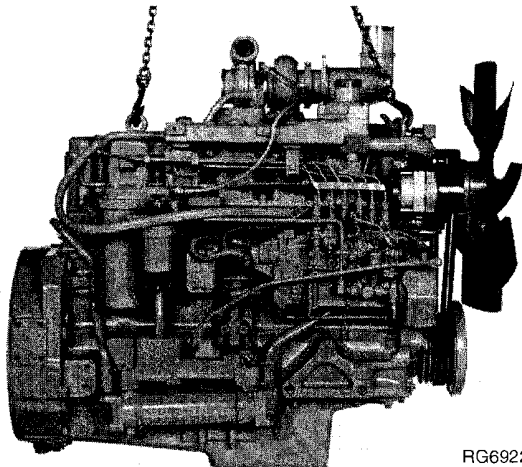
6101HF010 ENGINE



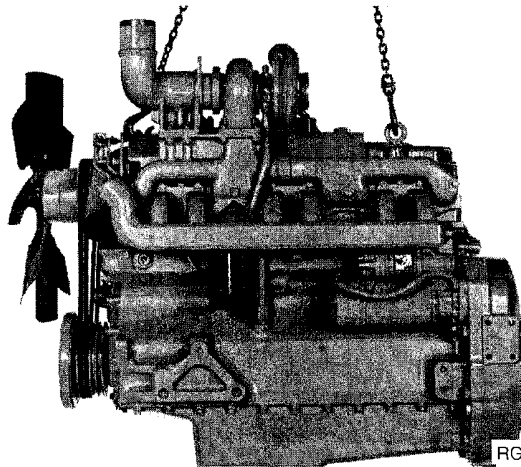
RG6920



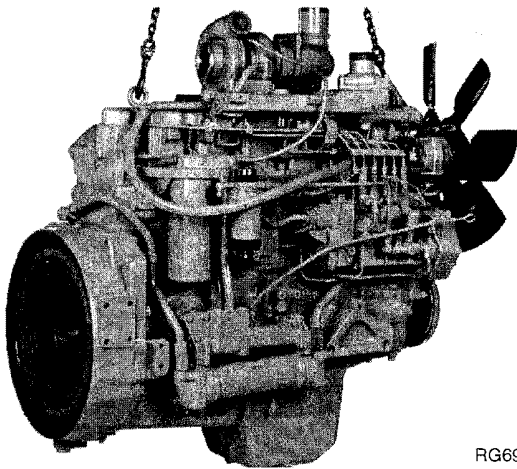
RG6921



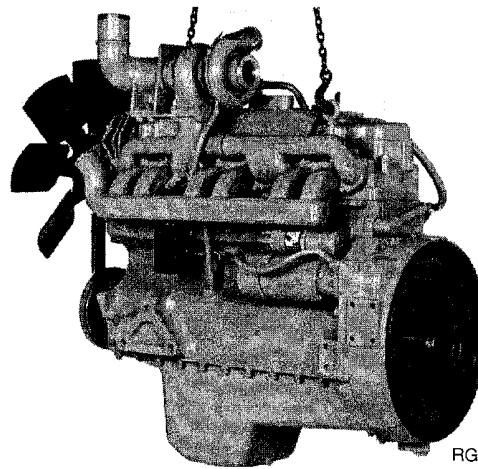
RG6922



RG6923



RG6924



RG6925

Contents

Page	Page
Record Keeping	
Record Engine Serial Number	1
Engine Option Codes	2
Record PTO Serial Number	4
Record Fuel Injection Pump Serial Number	4
Safety 5	
Fuels, Lubricants, and Coolant	
Diesel Fuel	15
Lubricity of Diesel Fuels	15
Diesel Fuel Storage	16
Filling Fuel Tank	16
Minimizing the Effect of Cold Weather on Diesel Engines	17
Engine Break-in Oil	18
Diesel Engine Oil	19
Mixing of Lubricants	19
OILSCAN and CoolsCAN	20
Alternative and Synthetic Lubricants	20
Lubricant Storage	21
Grease	21
Engine Coolant Recommendations	22
Engine Coolant Specifications	23
Testing Diesel Engine Coolant	25
Replenishing Supplemental Coolant Additives (SCAs) Between Coolant Changes	26
Operating in Warm Temperature Climates	27
Disposing of Coolant	27
Engine Operating Guidelines	
Instrument (Gauge) Panel	29
Normal Engine Operation	30
Break-in Service	31
Standby Power Units	33
Starting the Engine	33
Cold Weather Operation	35
Warming Engine	36
Changing Engine Speed	37
Engine Operating Speeds	38
Idling Engine	39
Stopping the Engine	40
Using a Booster Battery or Charger	41
Lubrication and Maintenance	
Observe Service Intervals	43
Use Correct Fuels, Lubricants, and Coolant	43
Lubrication and Maintenance Service Interval Chart—Standard	44
Lubrication and Maintenance Service Interval Chart—Standby Power Units	45
Lubrication and Maintenance/Daily	
Daily Prestarting Checks	47
Lubrication and Maintenance/50 Hour/2 Week	
Checking Fuel Filter	51
Servicing Fire Extinguisher	53
Lubrication and Maintenance/250 Hour	
Service Battery	54
Changing Engine Oil and Replacing Oil Filter	56
Checking and Adjusting Alternator and Fan Belt Tension	58
Checking PTO Clutch Adjustment	59

Continued on next page

All information, illustrations, and specifications in this manual are based on the latest information available at the time of publication. The right is reserved to make changes at any time without notice.

OMRG25414 (01NOV96)

COPYRIGHT© 1996
 DEERE POWER SYSTEMS GROUP
 Waterloo, Iowa
 All rights reserved
 A John Deere ILLUSTRATION™ Manual
 Previous Editions
 Copyright 1993, 1995 Deere & Company

Contents

Page	Page
Lubrication and Maintenance/600 Hour/12 Month	Troubleshooting
Lubricating PTO Clutch Internal Levers and Linkage 61	General Troubleshooting Information 93
Inspecting And Cleaning Crankcase Ventilator Assembly 62	Reading a Wiring Diagram 94
Checking Air Intake System 63	Instrument (Gauge) Panel Wiring Diagram 95
Replacing Rectangular Final Fuel Filter Element . 64	Engine Troubleshooting 96
Replacing Primary Fuel Filter/water Separator . . 66	Electrical Troubleshooting 100
Checking Cooling System 67	Storage
Checking Effectiveness of Coolant Solution 68	Engine Storage Guidelines 103
Adding Supplemental Coolant Additives (SCAs) . 69	Use AR41785 Engine Storage Kit 103
Lubrication and Maintenance/1200 Hour/24 Month	Preparing Engine for Long Term Storage 104
Checking and Adjusting Engine Speeds 71	Removing Engine from Long Term Storage 105
Checking Crankshaft Vibration Damper 71	Specifications
Flushing Cooling System 74	General Engine Specifications 107
Changing Engine Rated Speed from 1800 RPM to 1500 RPM and Adjusting Droop— In-line Injection Pumps 76	Unified Inch Bolt and Cap Screw Torque Values . 108
Lubrication and Maintenance/2000 Hour	Metric Bolt and Cap Screw Torque Values 109
Checking and Adjusting Engine Valve Clearance . 79	Lubrication and Maintenance Records 111
Service As Required	Emission System Warranty 115
Additional Service Information 81	Service Literature 119
Adding Coolant 82	Order Form 121
Replacing Air Cleaner Filter Element 83	Index
Inspecting Primary Filter Element 85	
Cleaning Primary Filter Element 86	
Washing Primary Filter Element 87	
Replacing Fan and Alternator Belts 88	
Power Take-off (PTO) Clutch 88	
Check Fuses 89	
Do Not Modify Fuel Injection System 89	
Bleeding the Fuel System 90	

Record Keeping

RECORD ENGINE SERIAL NUMBER

The engine serial number plate (C) is located on the right-hand side of engine block between the fuel filter and fuel injection pump.

Record all of the numbers and letters found on your engine serial number plate in the spaces provided below.

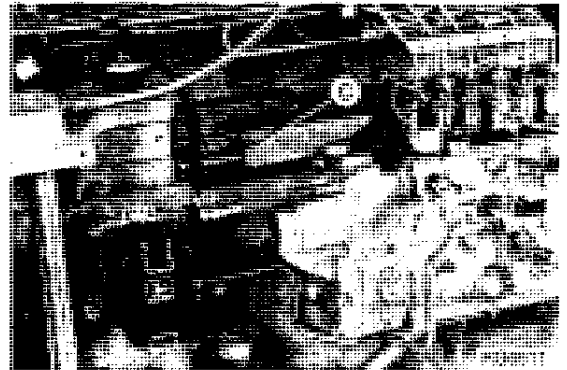
This information is very important for repair parts or warranty information.

Engine Serial Number (A)

Application Data or Type (B)



RG6910



ENGINE OPTION CODES

JOHN DEERE				OPTION CODES										
SERIES 500	0001	1101	1299	1302	1401	1505	1601	1733	1906	2014	2102	2204	2303	2401
6101AF010	2601	2812	2912	3004	3101	3504	3801	3905	4002	4399	4421	4602	4701	4801
10.1 L	4902	5002	5109	5201	5510	5601	5701	5901	6202	6401	6503	6699	6903	7401
1945F	7699	7701	7802	9701	9806	9901								

Customer No. A00000000000
Number RG6101A000000

RG8524

In addition to the serial number plate, OEM engines have an engine option code label affixed to the rocker arm cover. These codes indicate which of the engine options were installed on your engine at the factory. When in need of parts or service, furnish your authorized servicing dealer or engine distributor with these numbers.

The first two digits of each code identify a specific group, such as alternators. The last two digits of each code identify one specific option provided on your engine, such as a 24-volt, 42-amp alternator.

If an engine is ordered without a particular component, the last two digits of that functional group option code will be 99, 00, or XX. The following list shows only the first two digits of the code numbers. For future reference such as ordering repair parts, it is important to have these code numbers available. To ensure this availability, enter the third and fourth digits shown on your engine option code label in the spaces provided on the following page.

NOTE: Your engine option code label may not contain all option codes if an option has been added after the engine left the producing factory.

If option code label is lost or destroyed, consult your servicing dealer or engine distributor selling the engine for a replacement.

Buy Now



Our support email:

ebooklibonline@outlook.com