

175 FARM LOADER



JOHN DEERE

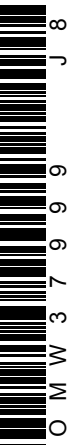
OPERATORS MANUAL

175 FARM LOADER

OMW37999 J8 English

JOHN DEERE WELLAND WORKS
OMW37999 J8

LITHO IN THE U.S.A.
ENGLISH



Introduction

Read this manual carefully to learn how to operate and service your machine correctly. Failure to do so could result in personal injury or equipment damage.

This manual should be considered a permanent part of your machine and should remain with the machine when you sell it.



This machine is of metric design. Measurements in this manual are metric with the customary U.S. measurement following. Use only metric hardware and tools as specified.

Right-hand and left-hand sides are determined by facing in the direction of forward travel.

Write identification numbers in the space provided in the Specifications section. Accurately record all the numbers to help in tracing the machine should it be stolen. Your dealer also needs these numbers when you order parts. If this manual is kept on the machine, also file the numbers in a secure place off the machine.

Warranty is provided as part of John Deere's support program for customers who operate and maintain their equipment as described in this manual. The warranty is explained on the warranty certificate which you should have received from your dealer.

This warranty provides you the assurance that John Deere will back its products where defects appear within the warranty period. In some circumstances, John Deere also provides field improvements, often without charge to the customer, even if the product is out of warranty. Should the equipment be abused, or modified to change its performance beyond the original factory specifications, the warranty will become void and field improvements may be denied. Setting fuel delivery above specifications or otherwise overpowering machines will result in such action.



All information, illustrations and specifications in this manual are based on the latest product information available at the time of publication. The right is reserved to make changes at any time without notice.

COPYRIGHT® 1988, DEERE & COMPANY, Moline, Illinois. All rights reserved. A John Deere ILLUSTRATION™ Manual.

PREVIOUS EDITIONS COPYRIGHT® 1987, 1985, 1981

7EA;W11619 W01;W37999-IFC 051088

W19;IFC 3 051088

Contents

	Page		Page
Safety	05-1	Avoiding Tractor Roll-Over When Handling Round Bales	35-2
Preparing The Tractor		Carrying Round Bales	35-2
Approved Tractors	10-1	Lift Capacity Of Loader With Bale Fork	35-3
Approved Front Tires	10-2	Removing Material From A Pile	35-3
Inflating Front Tires	10-2	Carrying Material	35-4
Checking Front Wheel Hardware	10-2	Loading Operations	35-4
Removing Front Weights	10-3	Leveling And Scraping Forward	35-4
Selecting Front Tread	10-3	Leveling In Reverse	35-5
Selecting Rear Tread	10-3	Digging	35-5
Adding Rear Ballast	10-4	Backfilling	35-5
Locking Out PTO Clutch	10-4		
Operating With RCCV	10-5	Attachments	
Setting Hydraulic Speed	10-5	Attaching Bucket	40-1
Installing RCCV Lockout Stops	10-6	Materials Buckets	40-1
Operating With ICV	10-6	Attaching Bucket Tines	40-2
		Assembling Manure Fork	40-2
Controls		Installing Bucket Level Indicator	40-2
Using Float	15-1	Assembling Forklift	40-3
Using RCCV Lockout	15-1	Adjusting Forklift Tines	40-4
Operating Loader With RCCV	15-2	Installing Toolbox	40-5
Operating Loader With ICV	15-2	Installing Hood Guard	40-6
Using Regenerative Dump Position	15-3	Round Bale Fork	40-8
Using Control Lever Lock	15-3		
Relieving Hydraulic Pressure ICV		Lubrication And Maintenance	
Loader Attached	15-4	Selecting Grease	45-1
Loader Not Attached	15-4	Lubricating Loader	45-2
		Checking Transmission/Hydraulic Oil Level	45-3
Detaching The Loader		Tightening Mounting Frame Hardware	45-3
Lowering Parking Stands	20-1		
Relieving Hydraulic Pressure RCCV	20-2	Troubleshooting	50-1
Disconnecting Hoses RCCV	20-2		
Relieving Hydraulic Pressure ICV	20-3	Service	
Disconnecting Hoses ICV	20-3	Checking Bolt Torque	55-2
Backing Away From Loader	20-4	Tightening Hydraulic Fittings	55-3
Storing Bucket Level Indicator	20-4	Tightening O-Ring Fittings	55-4
		Tightening Flare Type Tube Fittings	55-5
Attaching The Loader		Tightening Flare Type Hose Fittings	55-5
Relieving Hydraulic Pressure RCCV	25-1	Changing Control Lever Position	
Connecting Hoses RCCV	25-1	Tractor With Sound-Gard Body	55-6
Relieving Hydraulic Pressure ICV	25-2	Tractor Without Sound-Gard Body	55-6
Connecting Hoses ICV	25-2	Identifying Hose Connections	
Installing Lift Cylinder Pins	25-2	Tractor With Poppet-Type RCCV	55-7
Store Parking Stands	25-3	Tractor With Spool-Type RCCV	55-7
Check Loader Operation	25-4	Tractor With ICV	55-8
		Servicing Tractor Air Intake Filter	55-8
Transporting	30-1		
		Storage	60-1
Operating The Loader		Crime Prevention	65-1
Preoperating Checks	35-1		
Understanding Round Bale Handling	35-2		

Contents

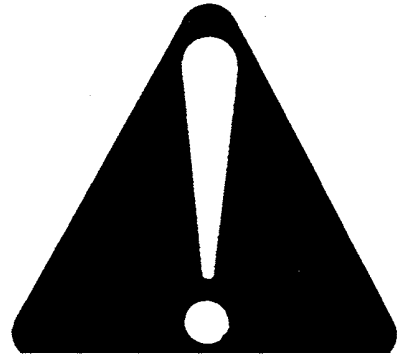
	Page
Specifications	70-1

Safety

RECOGNIZE SAFETY INFORMATION

This is the safety-alert symbol. When you see this symbol on your machine or in this manual, be alert to the potential for personal injury.

Follow recommended precautions and safe operating practices.



AB6;T81389 053;ALERT 160687

UNDERSTAND SIGNAL WORDS

A signal word—DANGER, WARNING, or CAUTION—is used with the safety-alert symbol. DANGER identifies the most serious hazards.

Safety signs with signal word DANGER or WARNING are typically near specific hazards.

General precautions are listed on CAUTION safety signs. CAUTION also calls attention to safety messages in this manual.

▲ DANGER

▲ WARNING

▲ CAUTION

AB6;TS187 053;SIGNAL 071085

FOLLOW SAFETY INSTRUCTIONS

Carefully read all safety messages in this manual and on your machine safety signs. Keep safety signs in good condition. Replace missing or damaged safety signs.

Learn how to operate the machine and how to use controls properly. Do not let anyone operate without instruction.

Keep your machine in proper working condition. Unauthorized modifications to the machine may impair the function and/or safety and affect machine life.



AB6;TS201 053;READ 230487

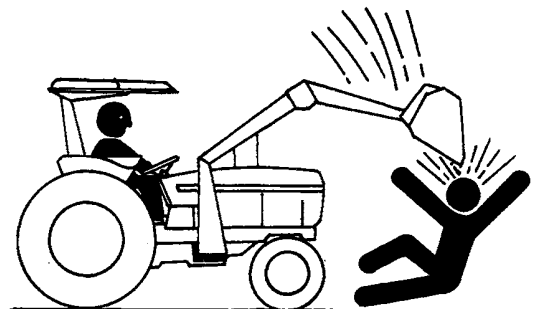
PROTECT PEOPLE AND ANIMALS

Never allow anyone to walk or work under a raised loader.

Be sure that people, livestock, or pets are not standing near the machine while operating.

Do not use the loader for a work platform.

Do not lift or carry anyone on loader or in bucket or attachment.



10A;W14235 W01;;5SY -B 290388



OPERATE LOADER SAFELY

Improper use of loader can cause serious injury or death.

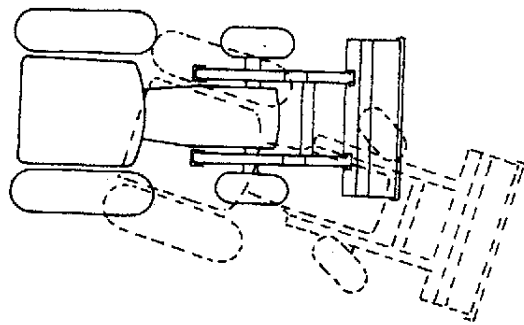
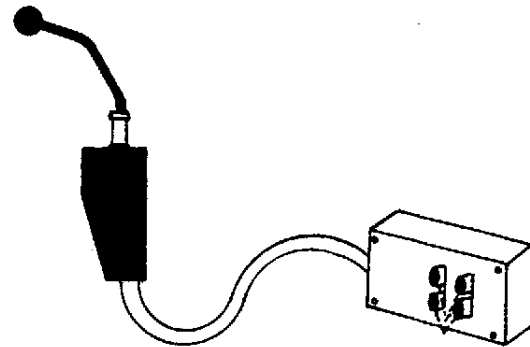
Become familiar with controls.

Operate loader from operator's seat only. Remain at controls until operating cycle is complete.

Use particular care when working on inclines and hillsides.

Avoid holes, ditches, and obstructions which may cause tractor/loader to tip.

Allow for additional length of loader on tractor while turning.



7CA;W11377 W11378 W01;5SY -C 141287

CARRY MATERIALS SAFELY

Be sure anyone operating the loader is aware of safe operation and potential hazards.

Do not exceed lift capacity of loader.

Carry load low at all times.

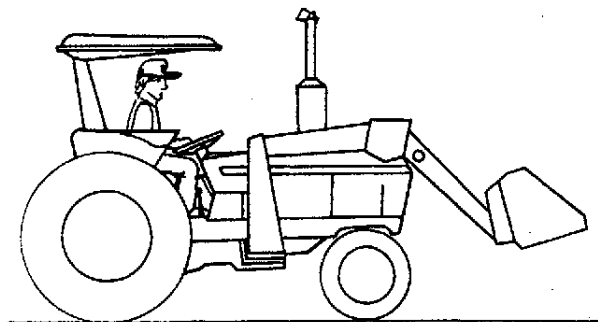
Stop loader gradually when lowering or lifting loads.

To help prevent loss of control, do not use "FLOAT" position to lower loader.

Avoid handling loose or shiftable loads.

Reduce tractor ground speed when traveling over rough ground or when making turns.

Drive slowly through gates and doors.



7CA;W11380 W01;5SY -E 141287

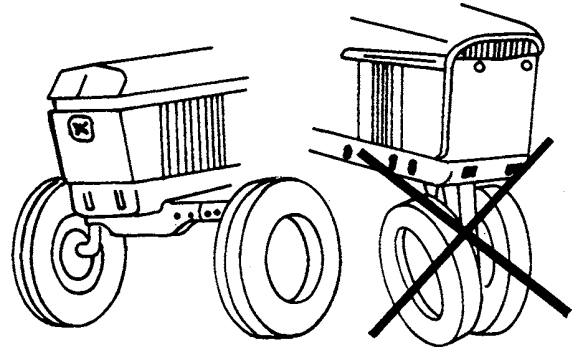


HELP PREVENT ROLL-OVERS

Do not use tractor with Roll-O-Matic front end, single, or double front wheels.

Use recommended rear ballast for stability.

Use widest rear wheel tread setting to maximize stability.



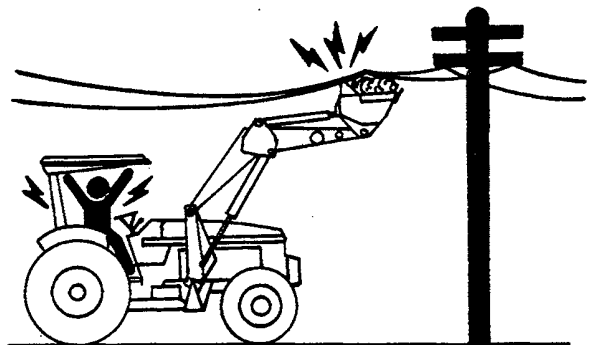
7CA;W11379 W01;;5SY F. 180786

AVOID POWER LINES

Serious injury or death can result from contact with electric lines. Use care to avoid contact with electric lines when moving or operating the loader.

Beware of lift clearance when raising loader to maximum height.

Do not dismount from tractor if any component is in contact with lines.

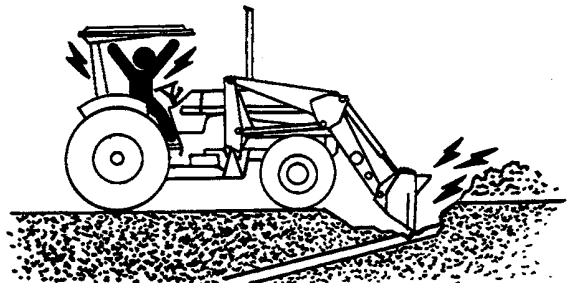


1DA;W14321 W01;;1SY -E 100888

DIG SAFELY

Before digging, check location of cables, gas lines and water lines.

Do not dismount from tractor if any component is in contact with lines.



1DA;W14322 W01;;1SY -F 100888

DETACH LOADER SAFELY

Detach the loader on a hard, level surface.

Before disconnecting hydraulic hoses, relieve all hydraulic pressure.



1DA;W14000 W01;;1SY -A 010388

Buy Now



Our support email:

ebooklibonline@outlook.com