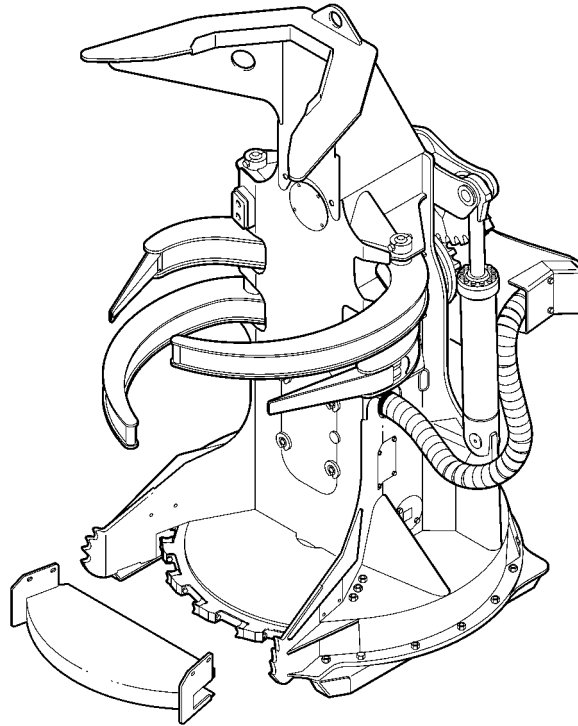


# FG18

## Swing to Tree Disk Saw Felling Head

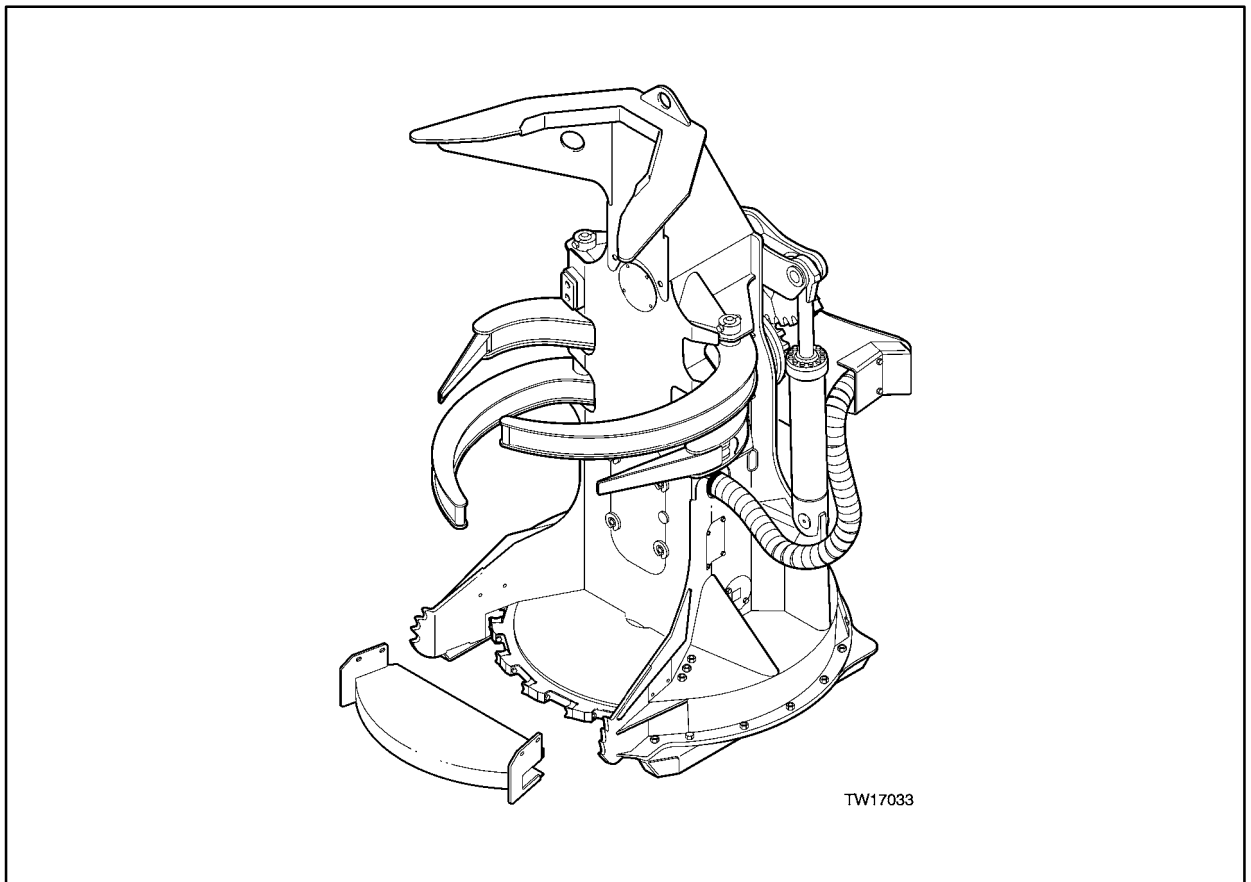
F382270



## Workshop Manual

Serial Number WCFG18X009001  
and higher

# Workshop Manual



## FG18 Swing to Tree Disc Saw Felling Head

Timberjack Inc.  
P.O. Box 160  
925 Devonshire Avenue  
Woodstock, Ontario, Canada  
N4S 7X1

Telephone:

(519) 537-6271

# Table of Contents

---

<b>Section</b>	<b>Description</b>
7400	Introduction
7411	Felling Head Frame
7412	Clamp Arms
7420	Wrist/Boom Adapter
7430	Disc Saw Group
7434	Disc Saw Driveshaft
7440	Hydraulic Group
7441	Hydraulic Motors
7442	Hydraulic Cylinders
7450	Electrical Group

---

# 7400 Introduction

1.1 Introduction	7400-3
1.1.1 General	7400-3
1.1.2 Models Covered By This Manual	7400-3
1.2 FG18 (Swing to Tree)	7400-4
1.2.1 Component Description	7400-4
1.2.2 General Dimensions	7400-6
1.2.3 General Specifications	7400-7
1.3 Safety Precautions	7400-9
1.3.1 General	7400-9
1.3.2 Safety Symbol	7400-9
1.3.3 Understanding Signal Words	7400-9
1.3.4 General Safety Precautions	7400-10
1.3.5 Operating Safety Precautions	7400-13
1.3.6 Servicing Safety Precautions	7400-14
1.3.7 Fire prevention	7400-17
1.4 Torque Values	7400-18
1.4.1 Steel Fasteners	7400-18
1.4.2 Hydraulic Fittings	7400-22
1.5 Application of Adhesives	7400-26
1.5.1 Through Hole (Bolts & Nuts)	7400-26
1.5.2 Blind Holes (Cap Screws, etc.)	7400-26
1.5.3 Pre-Assembled Fasteners	7400-27
1.5.4 Hydraulic Fittings	7400-27
1.6 Tool Lists	7400-28
1.6.1 Service Shop	7400-28
1.6.2 Service Truck	7400-29
1.6.3 Felling Head Service Tools	7400-30

## **1.1 Introduction**

### **1.1.1 General**

The Workshop Manual is intended to provide technical information, component specifications, troubleshooting and removal, disassembly and reassembly procedures for most of the major components of the felling head. Use this manual in conjunction with the applicable Operator/Maintenance Manual and the applicable Carrier Workshop Manuals.

When practical, the Workshop Manual lists likely causes of malfunctions, offers test procedures to verify causes and then illustrates the steps for the adjustment or repair procedure(s).

Troubleshooting must always be a multi-step process. Use the following steps:

1. Know the operation of all machine systems.
2. Ask the operator about symptoms and when they occur.
3. Operate the machine yourself if practical.
4. List all possible causes.
5. Inspect for obvious causes.
6. Eliminate the simple ones by checking oil, changing filters, etc.
7. Carry out diagnostic procedures like pressure and leakage testing to pinpoint the cause.

Component specifications provide performance and mode of operation information that can be very useful in troubleshooting.

Disassembly and reassembly procedures are given for many major components. When possible, clearance and torques are given. If a manufacturer's workshop manual is available, it should be given priority.

Reference to special equipment for testing and repair is limited, as most repair shops or local machine shops are well equipped to fabricate on an as-needed basis to reduce downtime.

### **1.1.2 Model Covered By This Manual**

Technical information, component specifications, troubleshooting, removal, disassembly and reassembly procedures for the FG18 (Swing to Tree) model felling head is covered in this manual.

Thank you so much for reading.  
Please click the “Buy Now!”  
button below to download the  
complete manual.



After you pay.

You can download the most  
perfect and complete manual in  
the world immediately.

Our support email:

[ebooklibonline@outlook.com](mailto:ebooklibonline@outlook.com)