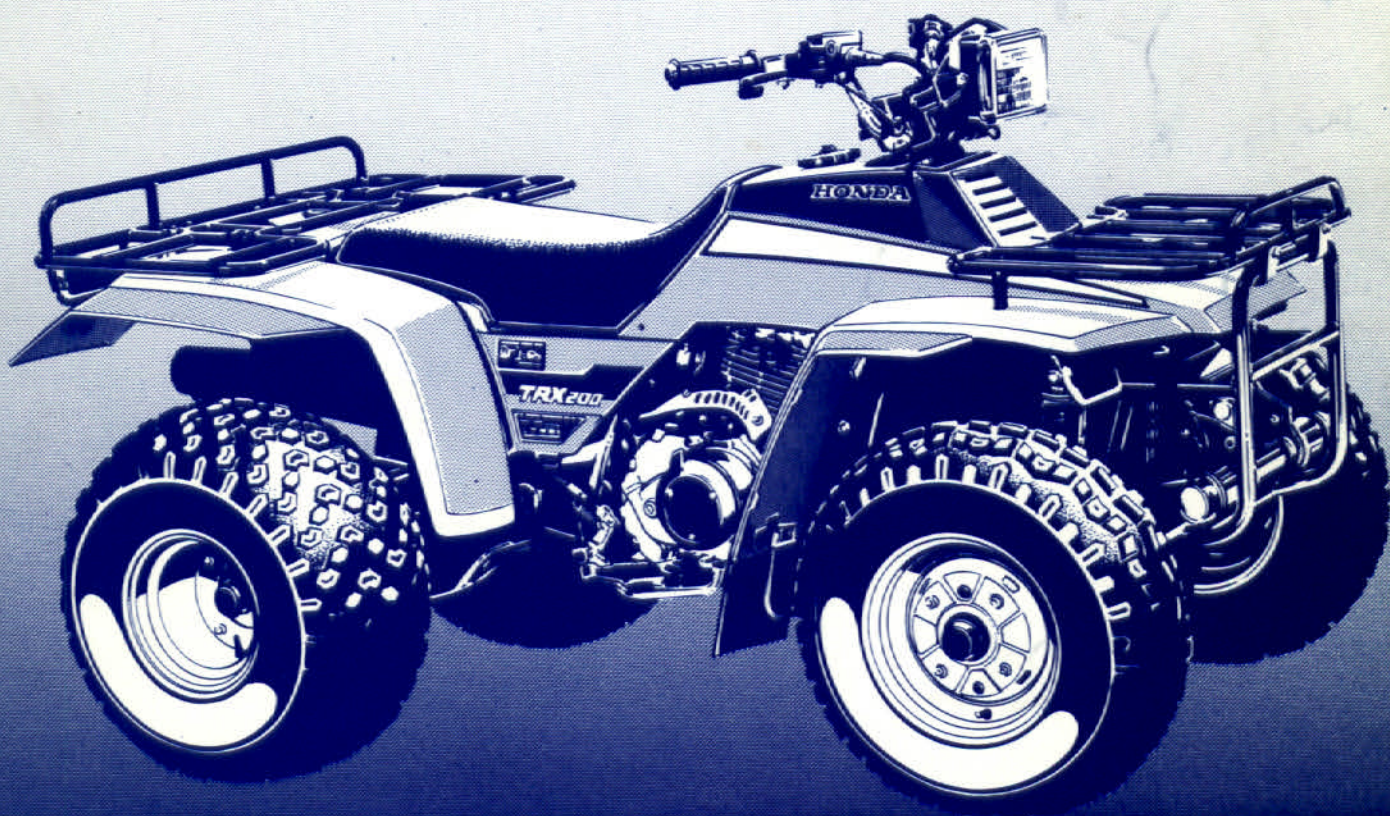


Official

HONDA

SHOP MANUAL

TRX200



'84



HOW TO USE THIS MANUAL

Sections 1 through 3 apply to the whole motorcycle, while sections 4 through 19 describe parts of the motorcycle, grouped according to location.

Find the section you want on this page, then turn to the table of contents on page 1 of that section.

Most sections start with an assembly or system illustration and all the required specifications, torque values, general instructions, tools and troubleshooting for the section. The subsequent pages give detailed procedures.

If you don't know the source of the trouble, see Section 20, TROUBLESHOOTING.

CONTENTS

	GENERAL INFORMATION	1
	LUBRICATION	2
	MAINTENANCE	3
ENGINE	FUEL SYSTEM	4
	ENGINE REMOVAL/INSTALLATION	5
	CYLINDER HEAD/VALVES	6
	CYLINDER/PISTON	7
	CLUTCH/OIL PUMP/GEARSHIFT LINKAGE	8
	RECOIL STARTER/ALTERNATOR/STARTER CLUTCH	9
	SUB-TRANSMISSION/OUTPUT GEAR	10
	TRANSMISSION/CRANKSHAFT	11
CHASSIS	FRONT WHEEL/SUSPENSION/STEERING	12
	BRAKES	13
	REAR WHEEL/SUSPENSION/FINAL DRIVE	14
	CARRIERS/FENDER/EXHAUST MUFFLER	15
ELECTRICAL	IGNITION SYSTEM	16
	BATTERY/CHARGING SYSTEM	17
	STARTER SYSTEM	18
	LIGHTS/SWITCHES	19
	TROUBLESHOOTING	20



1. GENERAL INFORMATION

GENERAL SAFETY	1-1
SERVICE RULES	1-1
MODEL IDENTIFICATION	1-2
SPECIFICATIONS	1-3
TORQUE VALUES	1-5
TOOLS	1-7
CABLE & HARNESS ROUTING	1-9

GENERAL SAFETY

WARNING

If the engine must be running to do some work, make sure the area is well-ventilated. Never run the engine in a closed area. The exhaust contains poisonous carbon monoxide gas.

WARNING

The battery generates hydrogen gas which can be highly explosive. Do not smoke or allow flames or sparks near the battery, especially while charging it.

WARNING

Gasoline is extremely flammable and is explosive under certain conditions. Do not smoke or allow flames or sparks in your work areas.

WARNING

The battery electrolyte contains sulfuric acid. Protect your eyes, skin and clothing. In case of contact, flush thoroughly with the water and call a doctor if electrolyte gets in your eyes.

SERVICE RULES

1. Use genuine HONDA or HONDA-recommended parts and lubricants or their equivalents. Parts that don't meet HONDA's design specifications may cause damage to the vehicle.
2. Use the special tools designed for this product to avoid damage and incorrect assembly.
3. Use only metric tools when servicing this vehicle. Metric bolts, nuts, and screws are not interchangeable with English fasteners.
4. Install new gaskets, O-rings cotter pins, and lock plates when reassembling.
5. When tightening bolts or nuts, begin with the larger-diameter or inner bolt first. Then tighten to the specified torque diagonally in 1-4 steps, unless a particular sequence is specified.
6. Clean parts in non-flammable or high flash point solvent upon disassembly.
7. Lubricate any sliding surfaces before reassembly.
8. After reassembly, check all parts for proper installation and operation.



MODEL IDENTIFICATION



FRAME SERIAL NUMBER



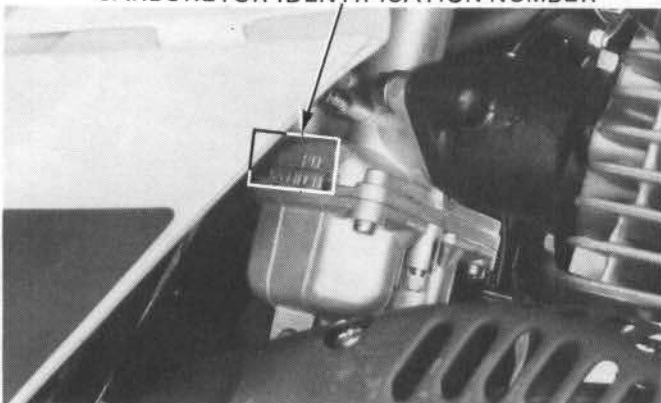
The frame serial number is stamped on the frame cross-member directly beneath the front fender.

ENGINE SERIAL NUMBER



The engine serial number is stamped on the crankcase lower left side.

CARBURETOR IDENTIFICATION NUMBER



The carburetor identification number is on the carburetor body right side.



The vehicle identification number is on the frame cross-member directly beneath the front fender.



SPECIFICATIONS

<p>DIMENSIONS</p>	<p>Overall length Overall width Overall height Wheel base Seat height Foot peg height Ground clearance Dry weight</p>	<p>1,865 mm (73.4 in) 1,070 mm (42.1 in) 1,005 mm (39.6 in) 1,235 mm (48.6 in) 730 mm (28.7 in) 290 mm (11.4 in) 150 mm (5.9 in) 205 kg (452 lbs)</p>
<p>FRAME</p>	<p>Type Rim size Front Rear Front tire size, pressure Rear tire size, pressure Front brake Rear brake Fuel tank Fuel reserve capacity Toe in Caster angle Camber angle Trail length Tread Front Rear</p>	<p>Semi-double cradle 5.5 x 10 DC 9.2 x 9.0 DC 21 x 7-10 0.2 kg/cm² (2.9 psi) 25 x 12-9 0.15 kg/cm² (2.2 psi) Hydraulic operated leading trailing shoe Cable operated leading trailing shoe 9.5 liters (2.5 US gal, 2.09 Imp gal) 1.0 liters (2.26 US gal, 0.22 Imp gal) 0 ± 7.5 mm (0 ± 0.30 in) 8° 1° 42 mm (1.65 in) 800 mm (31.5 in) 800 mm (31.5 in)</p>
<p>ENGINE</p>	<p>Type Cylinder arrangement Bore x stroke Displacement Compression ratio Valve train Maximum horsepower Maximum torque Oil capacity Lubrication system Cylinder compression Intake valve OPENS CLOSES Exhaust valve OPENS CLOSES Valve clearance Intake Exhaust (Cold)</p>	<p>Gasoline, air-cooled 4-stroke Single cylinder inclined 15° 65.0 x 57.8 mm (2.56 x 2.28 in) 192 cc (11.7 cu in) 7.8 : 1 Overhead camshaft chain driven 13.0 BHP/7,000 rpm 1.46 kg-m (0.6 ft-lb/5,500 rpm) 1.8 liters (1.9 US qt, 1.6 Imp qt) 1.0 liter (1.1 US qt, 0.9 Imp qt) after draining Forced pressure and wet sump 11.0 ± 1.0 kg/cm² (156 ± 14 psi) 5° BTDC 35° ABDC 35° BBDC 5° ATDC } at 1 mm lift 0.05 mm (0.002 in) 0.05 mm (0.002 in)</p>



GENERAL INFORMATION

CARBURETOR	Type Venturi dia. Main jet Pilot screw opening Jet needle Float level Idle speed	Piston valve 22 mm (0.9 in) # 98 2-1/4 turns out 2nd 14 mm (0.55 in) 1,400 ± 100 rpm
DRIVE TRAIN	Clutch Transmission Primary reduction Gear ratio (Posi-torque gear ratio) I II III IV V Reverse Final reduction Gearshift pattern	Wet multi-plate, semi-automatic 5-speed constant mesh with reverse 3.333 2.841 (4.339) 1.767 (2.698) 1.306 (1.995) 1.026 (1.567) 0.836 (1.277) 4.616 4.255 Left foot operated return system, Forward: N-1-2-3-4-5, Reverse: N-1
ELECTRICAL	Ignition Ignition timing Initial Full advance Capacity Alternator Battery Spark plug Spark plug gap Headlight Taillight Neutral and reverse indicator light	CDI 10 ± 2° BTDC at idle 30 ± 2° BTDC at 3,350 rpm 70W/5,000 rpm 12V-14AH DR8ES-L (NGK) X24ESR-U (ND) 0.6-0.7 mm (0.024-0.028 in) 12V 45W/45W 12V 3.4W x 2 12V 3.0W x 2



TORQUE VALUES

ENGINE

Item	Q'ty	Thread Size (mm)	Torque		
			N·m	kg-m	ft-lb
Cylinder head cap nut	4	8 x 1.25	28-30	2.8-3.0	20-22
Clutch lock nut	1	16 x 1.0	50-60	5.0-6.0	36-43
Centrifugal clutch lock nut	1	22 x 1.25	105-115	10.5-11.5	76-83
Clutch adjusting screw lock nut	1	8 x 1.25	19-25	1.9-2.5	14-18
Alternator flywheel bolt	1	8 x 1.25	40-50	4.0-5.0	29-36
Valve adjuster cover	2	36 x 1.5	10-14	1.0-1.4	7-10
Oil filter screen cap	1	36 x 1.5	9-15	0.9-1.5	7-11
Spark plug	1	12 x 1.25	12-19	1.2-1.9	9-14
Cam sprocket bolt	2	6 x 1.0	8-12	0.8-1.2	6-9
Oil filter rotor cover bolt	3	6 x 1.0	10-14	1.0-1.4	7-10
Clutch lifter stopper bolt	1	8 x 1.25	18-25	1.8-2.5	13-18
Gearshift drum stopper arm bolt	1	6 x 1.0	10-14	1.0-1.4	7-10
Pulse generator screw	2	5 x 0.8	4-7	0.4-0.7	3-5
Pulse cover screw	2	5 x 0.8	4-7	0.4-0.7	3-5
Valve adjuster lock nut	2	6 x 0.75	15-18	1.5-1.8	11-13
Gearshaft stopper plate bolt	1	6 x 1.0	8-12	0.8-1.2	6-9
Cam chain tensioner adjusting bolt	1	16 x 1.0	15-22	1.5-2.2	11-16
Cam chain tensioner check bolt	1	6 x 1.0	8-10	0.8-1.0	6-7
Decompressor pivot bolt	1	6 x 1.0	5-7	0.5-0.7	4-5
Right crankcase protector screw	3	Self tapping screw	3-7	0.3-0.7	2.2-5
Carburetor mounting nut	2	6 x 1.0	6-9	0.6-0.9	4-7
Cylinder head cover socket bolt	4	6 x 1.0	8-12	0.8-1.2	6-9
Change lever mount nut	1	8 x 1.25	18-25	1.8-2.5	13-18
Output driven gear bearing holder	3	8 x 1.25	26-30	2.6-3.0	19-22
Drive gear bearing outer race	1	70 x 1.5	90-100	9.0-10.0	65-72
Drive gear bearing inner race	1	28 x 1.0	70-80	7.0-8.0	51-58
Driven gear bearing outer race	1	56 x 1.5	90-100	9.0-10.0	65-72
Driven gear bearing inner race	1	24 x 1.0	70-80	7.0-8.0	51-58

**GENERAL INFORMATION****FRAME**

Item	Q'ty	Thread Size (mm)	Torque		
			N-m	kg-m	ft-lb
Front engine hanger nut	2	8 x 1.25	23-27	2.3-2.7	17-20
Front engine lower hanger nut	1	10 x 1.25	45-53	4.5-5.3	33-38
Front engine hanger nut	2	10 x 1.25	40-48	4.0-4.8	29-35
Engine mount plate nut	1	10 x 1.25	40-48	4.0-4.8	29-35
Engine mount upper bracket nut	1	8 x 1.25	20-25	2.0-2.5	14-18
Handlebar upper holder bolt	4	8 x 1.25	18-30	1.8-3.0	13-22
Handlebar lower holder nut	2	10 x 1.25	40-48	4.0-4.8	29-35
Steering top thread	1	-	14-16	1.4-1.6	10-12
Steering stem nut	1	16 x 1.5	70-80	7.0-8.0	51-58
Front axle nut	2	18 x 1.5	80-100	8.0-10.0	58-72
Front/rear wheel nut	16	8 x 1.25	20-25	2.0-2.5	14-18
Ball joint/Tie rod nut	8	10 x 1.25	35-43	3.5-4.3	25-31
Kingpin lock nut	2	8 x 1.25	20-25	2.0-2.5	14-18
Front/rear shock absorber mount nut	6	10 x 1.25	40-50	4.0-5.0	29-36
Front arm hinge bolt	2	35 x 1.5	80-100	8.0-10.0	58-72
Arm hinge mount bolt	4	12 x 1.25	60-80	6.0-8.0	43-58
Left rear fork pivot bolt	1	30 x 1.5	90-120	9.0-12.0	65-87
Rear fork pivot lock nut	1	30 x 1.5	100-130	10.0-13.0	72-94
Right swingarm pivot bolt	1	30 x 1.5	16-20	1.6-2.0	12-14
Foot peg mount bolt	8	8 x 1.25	20-25	2.0-2.5	14-18
Front/rear fender mudguard	20	6 x 1.0	6-9	0.6-0.9	4-7
Front inner fender bolt	6	6 x 1.0	6-9	0.6-0.9	4-7
Carburetor inlet pipe mount bolt	2	6 x 1.0	6-9	0.6-0.9	4-7
D.C. receptacle bolt	2	5 x 0.8	1.5-2.5	0.15-0.25	1-2
Gearshift pedal mount bolt	1	6 x 1.0	12-14	1.2-1.4	9-10
Air cleaner case bolt	4	6 x 1.0	1.5-3	0.15-0.30	1-2
Master cylinder cap bolt	2	4 x 0.7	1-2	0.1-0.2	0.7-1.4
Brake hose bolt	3	10 x 1.25	25-35	2.5-3.5	18-25
Rear brake cover	6	8 x 1.25	24-30	2.4-3.0	17-22
Brake drum inner nut	1	32 x 1.0	40-50	4.0-5.0	29-36
Brake drum outer nut	1	32 x 1.0	120-140	12.0-14.0	87-101
Rear axle nut	2	18 x 1.5	80-100	8.0-10.0	58-72
Pinion retainer	1	58 x 1.5	100-120	10.0-12.0	72-87
Gear case cover	8	8 x 1.25	24-30	2.4-3.0	17-22
Pinion nut	1	16 x 1.5	80-100	8.0-10.0	58-72
Final gear case mounting bolt	2	12 x 1.25	100-120	10.0-12.0	72-87

Torque specifications listed above are for the most important tightening points. If a torque specification is not listed, follow the standards given below.

STANDARD TORQUE VALUES

Item	Torque N-m (kg-m, ft-lb)	Item	Torque N-m (kg-m, ft-lb)
5 mm bolt, nut	4.5-6 (0.45-0.6, 3.3-4.3)	5 mm screw	3.5-5 (0.35-0.5, 2.5-3.6)
6 mm bolt, nut	8-12 (0.8-1.2, 6-9)	6 mm screw and 6 mm bolt with 8 mm head	7-11 (0.7-1.1, 5-8)
8 mm bolt, nut	18-25 (1.8-2.5, 13-18)	6 mm flange bolt, nut	10-14 (1.0-1.4, 7-10)
10 mm bolt, nut	30-40 (3.0-4.0, 22-29)	8 mm flange bolt, nut	24-30 (2.4-3.0, 17-22)
12 mm bolt, nut	50-60 (5.0-6.0, 36-43)	10 mm flange bolt, nut	35-45 (3.5-4.5, 25-33)



TOOLS

SPECIAL

DESCRIPTION	TOOL NUMBER	ALTERNATIVE TOOL	TOOL NUMBER	REF. PAGE
Front shock absorber spring compressor adaptor	07967-VM50100			12-18
Kingpin driver	07965-VM50000			12-18
Lock nut wrench, 30/40 mm	07916-9690000			10-16, 10-23
Lock nut wrench attachment, 50 mm	07916-9690100			10-17, 10-22
Pilot holder attachment	07924-9690101			14-10, 14-17
Propeller shaft dis/assembly tool A	07967-9690100	Collar	07964-M800200	14-6
Propeller shaft dis/assembly tool B	07967-9690200			14-6
Retainer wrench	07910-ME80000			14-10, 14-14
Lock nut spanner, 41 mm	07916-9580200	Axle nut holder wrench	07916-958020A	13-14, 13-20
Wrench set, 41 mm	07916-9580300	Not available in U.S.A.		13-14
Wrench attachment, 41 mm	07916-9580400	Axle nut torque wrench adapter	07916-958010A	13-14, 13-20
Socket wrench, 30 mm	07916-PD10000	Equivalent commercially available in U.S.A.		8-6, 8-10
Clutch center holder	07923-9580000	Band strap wrench		8-12, 8-15
Lock nut wrench, 34/44 mm	07916-ME50000			10-17, 10-22
Shaft holder	07923-6890101			10-16, 10-17, 10-22, 10-23
Pinion holder	07924-ME40000			14-10, 14-17
Shaft puller	07931-ME40000			14-10
Bearing race insert attachment	07931-4630300	Driver	07746-0030100	14-14
Bearing remover, 17 mm	07936-3710300			8-5, 10-9
Remover handle	07936-3710100			8-5, 10-9, 10-18, 11-9
Remove weight	07741-0010201	Remover weight	07936-3710200	8-5, 10-9, 10-18, 11-9
Side gear bearing driver attachment	07946-9690100			10-21
Bearing remover, 15 mm	07936-KC10500			10-18, 11-9
Rear shock absorber compressor attachment	07967-KC10000			14-24
Remover shaft	07965-ME30000	Flange bolt	90010-371-003	14-7
Driver	07949-3710001		07949-3710000	14-22
Valve guide remer, 5.47 mm	07984-0980000			6-12
Bearing driver attachment	07945-3330300		07946-3710101	14-7, 14-11
Shock bit, 17 mm	07703-0020500	Commercially available in U.S.A.		14-21, 14-23
Pibot lock nut wrench	07908-4690001	Lock nut wrench adapter	KS-HBA-08-469	14-21, 14-24
Front wheel alignment attachment	07910-MG30200			3-14
Snap ring pliers	07914-3230001			13-12
Shock absorber attachment	07967-GA70101			12-18

Thank you so much for reading.
Please click the “Buy Now!”
button below to download the
complete manual.



After you pay.

You can download the most
perfect and complete manual in
the world immediately.

Our support email:

ebooklibonline@outlook.com