

Product: VIBRATORY COMPACTOR

Model: CB-334D VIBRATORY COMPACTOR 3JZ

Configuration: CB-334D Vibratory Compactor 3JZ00001-UP (MACHINE) POWERED BY 3013 Engine

Disassembly and Assembly 3003, 3013, 3014 and 3024 Engines for Caterpillar Built Machines

Media Number -SEN5027-05

Publication Date -01/05/2005

Date Updated -16/05/2005

i01783524

Fuel Filter Base - Remove

SMCS - 1262-011

Removal Procedure

NOTICE

Keep all parts clean from contaminants.

Contaminants may cause rapid wear and shortened component life.

NOTICE

Care must be taken to ensure that fluids are contained during performance of inspection, maintenance, testing, adjusting and repair of the product. Be prepared to collect the fluid with suitable containers before opening any compartment or disassembling any component containing fluids.

Refer to Special Publication, NENG2500, "Caterpillar Tools and Shop Products Guide" for tools and supplies suitable to collect and contain fluids on Caterpillar products.

Dispose of all fluids according to local regulations and mandates.

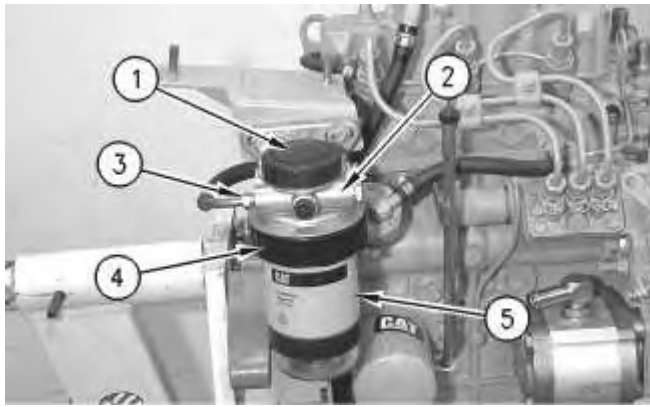


Illustration 1

g00767792

Typical example

1. Remove fuel filter (5) from the fuel filter base, as follows:
 - a. Remove the collar and cap (1) from the top of fuel filter base (2). This will help prevent spillage of fuel from the fuel filter.
 - b. Hold fuel filter (5) while locking collar (4) is turned in the counterclockwise direction.
 - c. Pull fuel filter (5) from fuel filter base (2) and remove locking collar (4) .
2. Disconnect fuel line (3) from fuel filter base (2). Plug all openings or cap all openings immediately in order to help prevent contamination.

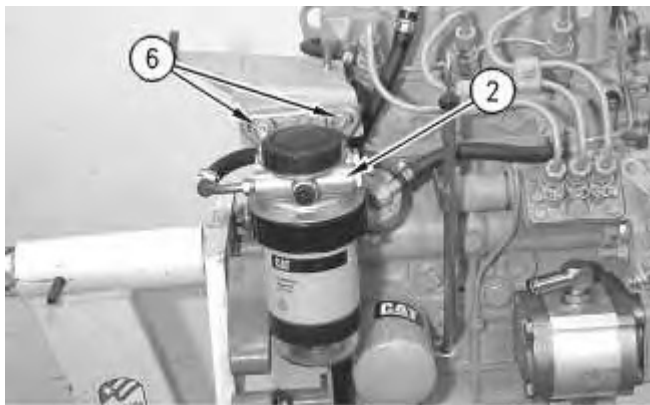


Illustration 2

g00767793

Typical example

3. Remove two bolts (6) that fasten fuel filter base (2) to the mounting bracket.
4. Remove fuel filter base (2) from the mounting bracket.

Note: Some engines may have a hand priming pump on the fuel filter base. Refer to the Disassembly and Assembly, "Fuel Filter Base - Disassemble" topic for information on removing the hand priming pump.

Product: VIBRATORY COMPACTOR

Model: CB-334D VIBRATORY COMPACTOR 3JZ

Configuration: CB-334D Vibratory Compactor 3JZ00001-UP (MACHINE) POWERED BY 3013 Engine

Disassembly and Assembly 3003, 3013, 3014 and 3024 Engines for Caterpillar Built Machines

Media Number -SEN5027-05

Publication Date -01/05/2005

Date Updated -16/05/2005

i01783533

Fuel Filter Base - Disassemble

SMCS - 1262-015

Disassembly Procedure

Hand Priming Pump (if equipped)

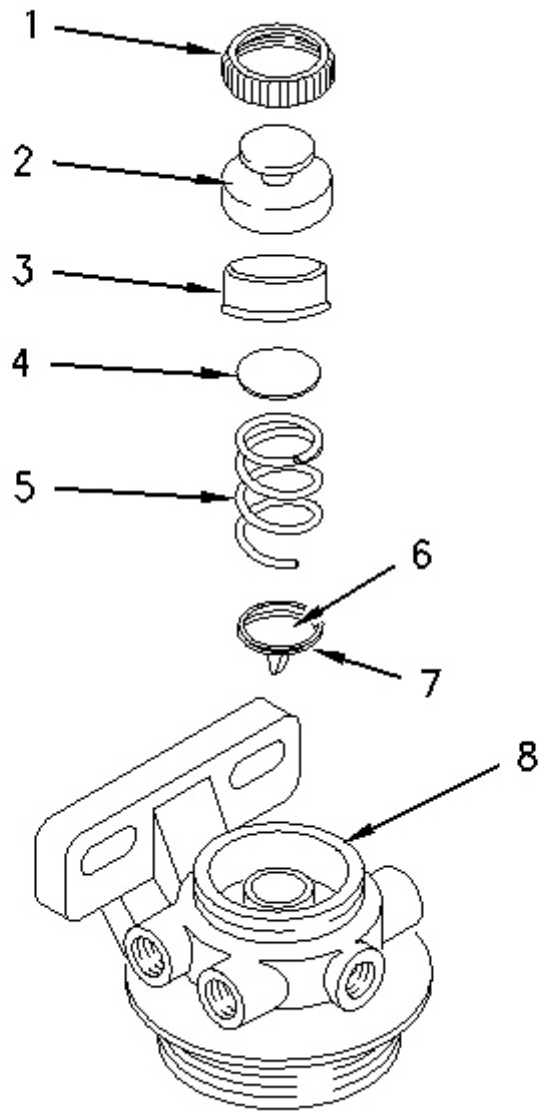


Illustration 1

g00732631

Hand Priming Pump

- (1) Cap ring
- (2) Priming button
- (3) Diaphragm
- (4) Spring cap
- (5) Spring
- (6) Valve plate
- (7) O-ring seal
- (8) Fuel filter base

1. Unscrew cap ring (1) from fuel filter base (8).

 **WARNING**

Personal injury can result from being struck by parts propelled by a released spring force.

Make sure to wear all necessary protective equipment.

Follow the recommended procedure and use all recommended tooling to release the spring force.

2. Remove priming button (2) and diaphragm (3) from spring cap (4). Inspect the rubber diaphragm (3) for cracks or for wear. If the diaphragm is worn or damaged, use a new part for replacement.
 3. Remove spring cap (4) and spring (5) from valve plate (6) .
 4. Remove valve plate (6) from fuel filter base (8).
-

Product: VIBRATORY COMPACTOR

Model: CB-334D VIBRATORY COMPACTOR 3JZ

Configuration: CB-334D Vibratory Compactor 3JZ00001-UP (MACHINE) POWERED BY 3013 Engine

Disassembly and Assembly 3003, 3013, 3014 and 3024 Engines for Caterpillar Built Machines

Media Number -SEN5027-05

Publication Date -01/05/2005

Date Updated -16/05/2005

i01783534

Fuel Filter Base - Assemble

SMCS - 1262-016

Assembly Procedure

Hand Priming Pump (if equipped)

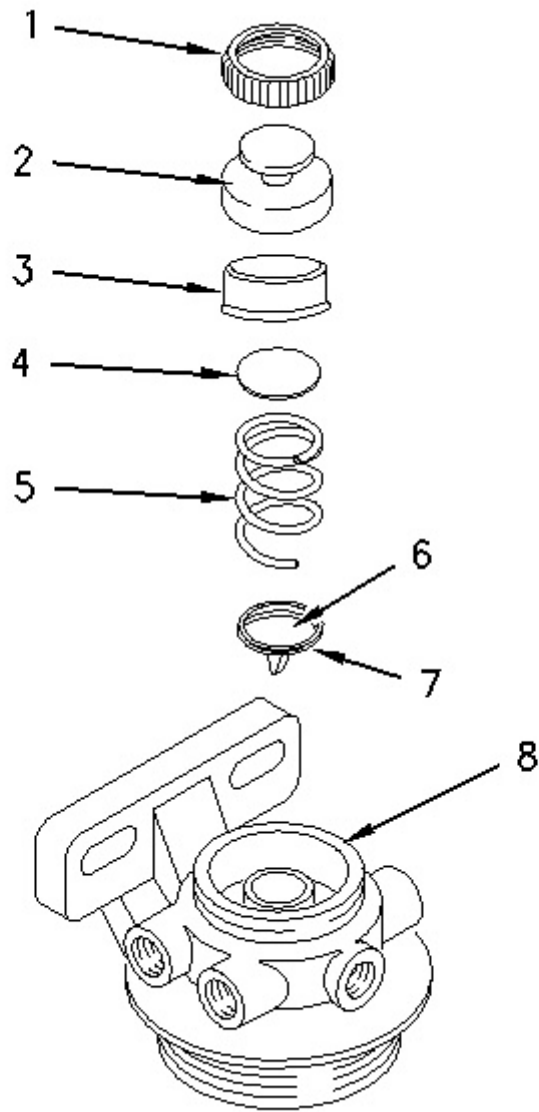


Illustration 1

g00732631

Hand Priming Pump

- (1) Cap ring
- (2) Priming button
- (3) Diaphragm
- (4) Spring cap
- (5) Spring
- (6) Valve plate
- (7) O-ring seal
- (8) Fuel filter base

1. Apply a thin film of clean engine oil to O-ring seal (7) and to valve plate (6) .

2. Insert valve plate (6) into fuel filter base (8). The valve plate must be installed with the O-ring (7) first. Ensure that the rubber valve extends through the center hole of fuel filter base (8). Push valve plate (6) firmly into the correct position.



Improper assembly of parts that are spring loaded can cause bodily injury.

To prevent possible injury, follow the established assembly procedure and wear protective equipment.

3. Install spring (5) into valve plate (6) and place spring cap (4) on top of the spring.
 4. Install rubber diaphragm (3) into priming button (2). Ensure that diaphragm (3) fits firmly into the correct position. Place the assembly over spring cap (4) .
 5. Install cap ring (1) over priming button (2). Depress priming button (2) until diaphragm (3) is seated firmly onto fuel filter base (8). Tighten cap ring (1) hand tight while the priming button (2) is depressed.
 6. Prime the fuel system. Refer to Testing and Adjusting, "Fuel System - Prime" for more information.
-

Product: VIBRATORY COMPACTOR

Model: CB-334D VIBRATORY COMPACTOR 3JZ

Configuration: CB-334D Vibratory Compactor 3JZ00001-UP (MACHINE) POWERED BY 3013 Engine

Disassembly and Assembly 3003, 3013, 3014 and 3024 Engines for Caterpillar Built Machines

Media Number -SEN5027-05

Publication Date -01/05/2005

Date Updated -16/05/2005

i01783535

Fuel Filter Base - Install

SMCS - 1262-012

Installation Procedure

NOTICE

Keep all parts clean from contaminants.

Contaminants may cause rapid wear and shortened component life.

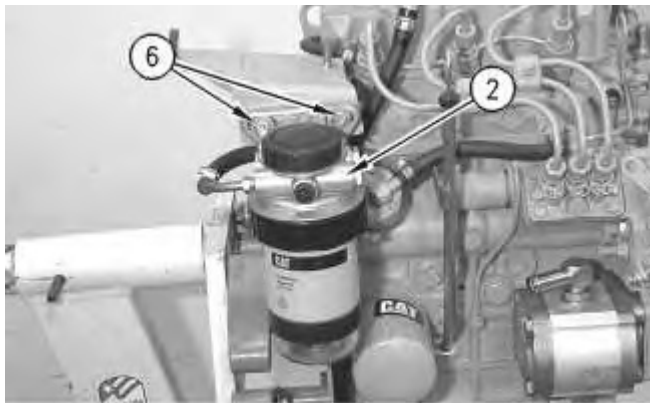


Illustration 1

g00767793

Typical example

1. Put fuel filter base (2) in position on the mounting bracket.

2. Install two bolts (6) that fasten the fuel filter base to the mounting bracket.

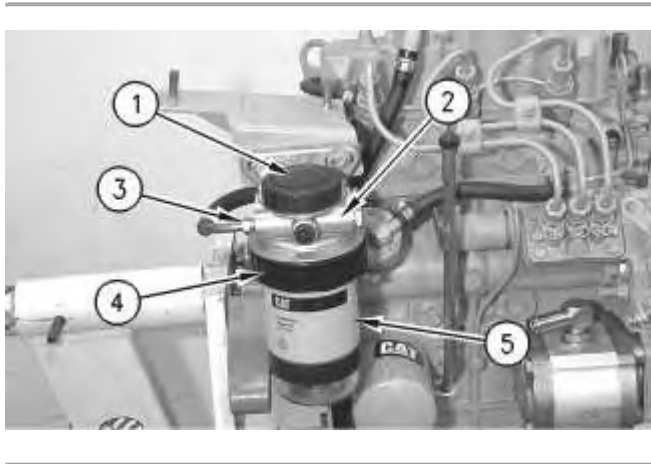


Illustration 2

g00767792

Typical example

3. Remove the cap or the plug and connect fuel line (3) to fuel filter base (2) .
4. Install fuel filter (5) on fuel filter base (2), as follows:
 - a. Replace the seal on fuel filter base (2) .
 - b. Insert fuel filter (5) in fuel filter base (2) .
 - c. Install collar (4) on the fuel filter and turn the collar in the clockwise direction in order to lock fuel filter (5) on the fuel filter base. The locking collar is hand tightened only.
 - d. Insert cap (1) into the top of fuel filter base (2). Install the collar that holds the cap into position.

Note: Some engines may have a hand priming pump on the fuel filter base. Refer to the Disassembly and Assembly Module, "Fuel Filter Base - Assemble" topic for information on installing the hand priming pump.

Product: VIBRATORY COMPACTOR

Model: CB-334D VIBRATORY COMPACTOR 3JZ

Configuration: CB-334D Vibratory Compactor 3JZ00001-UP (MACHINE) POWERED BY 3013 Engine

Disassembly and Assembly 3003, 3013, 3014 and 3024 Engines for Caterpillar Built Machines

Media Number -SEN5027-05

Publication Date -01/05/2005

Date Updated -16/05/2005

i01590349

Fuel Transfer Pump - Remove

SMCS - 1256-011

Removal Procedure

NOTICE

Keep all parts clean from contaminants.

Contaminants may cause rapid wear and shortened component life.

NOTICE

Care must be taken to ensure that fluids are contained during performance of inspection, maintenance, testing, adjusting and repair of the product. Be prepared to collect the fluid with suitable containers before opening any compartment or disassembling any component containing fluids.

Refer to Special Publication, NENG2500, "Caterpillar Tools and Shop Products Guide" for tools and supplies suitable to collect and contain fluids on Caterpillar products.

Dispose of all fluids according to local regulations and mandates.

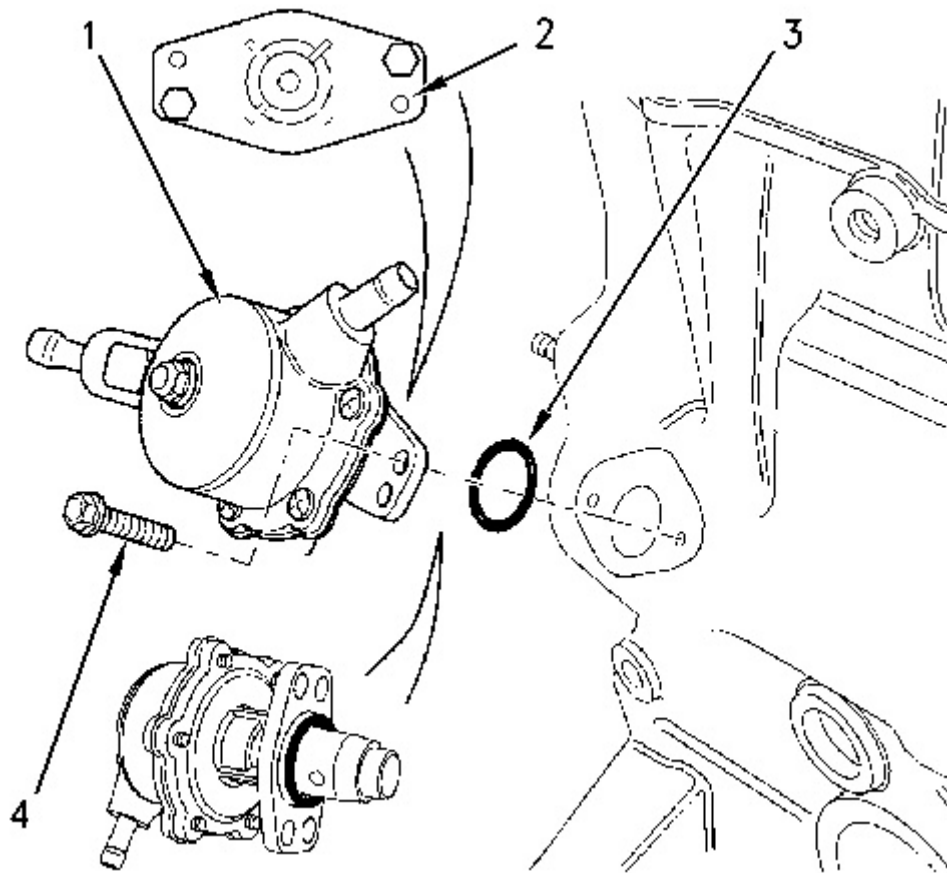


Illustration 1

g00824616

1. Loosen hose clamps and remove the two fuel lines from fuel transfer pump (1) .
2. Remove two bolts (4) that fasten fuel transfer pump (1) to the cylinder block.

Note: Before removing the fuel transfer pump (1) from the cylinder block, note the position of the flange (2) of the fuel transfer pump (1) for assembly.

3. Remove fuel transfer pump (1) and O-ring (3). Replace the O-ring when you install the fuel transfer pump.

Note: In order to remove the fuel transfer pump from the engine, it may be necessary to rotate the crankshaft until the rocker arm of the fuel transfer pump is not under pressure.

Product: VIBRATORY COMPACTOR

Model: CB-334D VIBRATORY COMPACTOR 3JZ

Configuration: CB-334D Vibratory Compactor 3JZ00001-UP (MACHINE) POWERED BY 3013 Engine

Disassembly and Assembly 3003, 3013, 3014 and 3024 Engines for Caterpillar Built Machines

Media Number -SEN5027-05

Publication Date -01/05/2005

Date Updated -16/05/2005

i01590391

Fuel Transfer Pump - Install

SMCS - 1256-012

Installation Procedure

NOTICE

Keep all parts clean from contaminants.

Contaminants may cause rapid wear and shortened component life.

NOTICE

Care must be taken to ensure that fluids are contained during performance of inspection, maintenance, testing, adjusting and repair of the product. Be prepared to collect the fluid with suitable containers before opening any compartment or disassembling any component containing fluids.

Refer to Special Publication, NENG2500, "Caterpillar Tools and Shop Products Guide" for tools and supplies suitable to collect and contain fluids on Caterpillar products.

Dispose of all fluids according to local regulations and mandates.

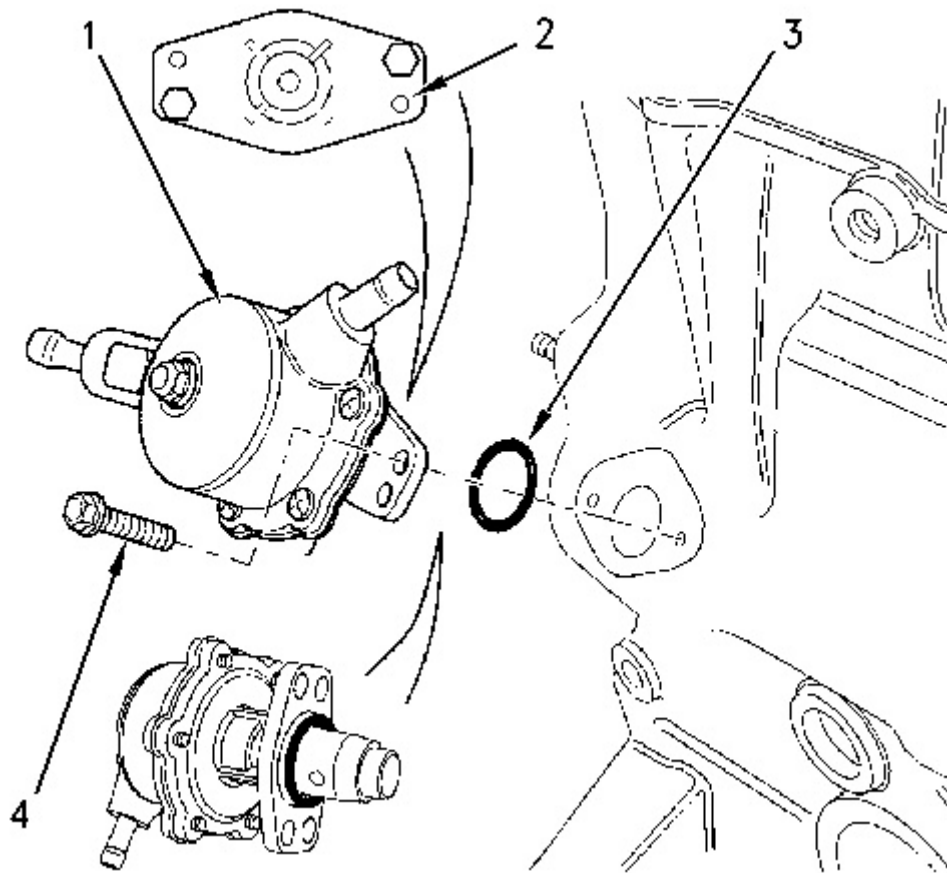


Illustration 1

g00824616

Note: Ensure that the camshaft lobe for the fuel transfer pump is at minimum lobe lift before the fuel transfer pump is installed.

Note: The flange of the fuel transfer pump has two sets of locating holes. This allows the fuel transfer pump to be mounted in four positions.

1. Put O-ring (3) and fuel transfer pump (1) in position on the engine. Ensure that the rocker lever is positioned correctly on the camshaft lobe.
2. Install two bolts (4) that fasten fuel transfer pump (1) to the cylinder block.
3. Connect the two fuel lines and hose clamps to the fuel transfer pump (1). Tighten the hose clamps.
4. Prime the fuel system. Refer to Testing and Adjusting, "Fuel System - Prime" for additional information.

Product: VIBRATORY COMPACTOR

Model: CB-334D VIBRATORY COMPACTOR 3JZ

Configuration: CB-334D Vibratory Compactor 3JZ00001-UP (MACHINE) POWERED BY 3013 Engine

Disassembly and Assembly 3003, 3013, 3014 and 3024 Engines for Caterpillar Built Machines

Media Number -SEN5027-05

Publication Date -01/05/2005

Date Updated -16/05/2005

i01112109

Fuel Injection Lines - Remove and Install

SMCS - 1252-010

Removal Procedure

NOTICE

Keep all parts clean from contaminants.

Contaminants may cause rapid wear and shortened component life.

NOTICE

Care must be taken to ensure that fluids are contained during performance of inspection, maintenance, testing, adjusting and repair of the product. Be prepared to collect the fluid with suitable containers before opening any compartment or disassembling any component containing fluids.

Refer to Special Publication, NENG2500, "Caterpillar Tools and Shop Products Guide" for tools and supplies suitable to collect and contain fluids on Caterpillar products.

Dispose of all fluids according to local regulations and mandates.

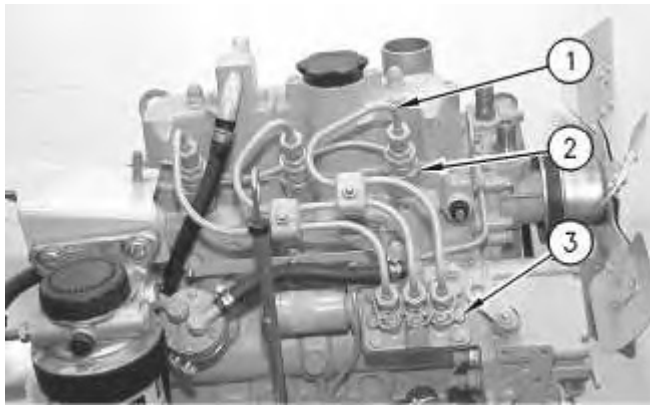


Illustration 1

g00587462

1. Disconnect fuel injection lines (1) from fuel injection nozzles (2) .

NOTICE

Do not let the tops of fuel nozzles turn when the fuel line nuts are loosened or tightened.

The nozzles will be damaged if the top of the nozzle turns in the body.

The engine will be damaged if a defective fuel injection nozzle is used because the shape of fuel (spray pattern) that comes out of the nozzles will not be correct.

2. Disconnect fuel injection lines (1) from fuel injection pump (3). Cap all openings or plug all openings immediately.
3. Remove fuel injection lines (1) from the engine as a unit.

Installation Procedure

NOTICE

Keep all parts clean from contaminants.

Contaminants may cause rapid wear and shortened component life.

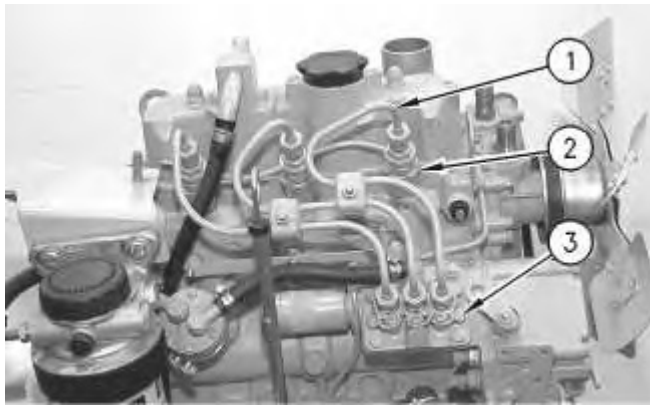


Illustration 2

g00587462

1. Install fuel injection lines (1) on the engine as a unit.

NOTICE

Do not let the tops of fuel nozzles turn when the fuel line nuts are loosened or tightened.

The nozzles will be damaged if the top of the nozzle turns in the body.

The engine will be damaged if a defective fuel injection nozzle is used because the shape of fuel (spray pattern) that comes out of the nozzles will not be correct.

2. Connect fuel injection lines (1) to fuel injection pump (3). Tighten the fuel injection line nuts to the following torque:
3003 Engine ... 22 N·m (16 lb ft)
3013, 3014, and 3024 Engines ... 20 N·m (15 lb ft)
 3. Connect fuel injection lines (1) to fuel injection nozzles (2). Tighten the fuel injection line nuts to the following torque:
3003 Engine ... 22 N·m (16 lb ft)
3013, 3014, and 3024 Engines ... 20 N·m (15 lb ft)
 4. Prime the fuel system. Refer to Testing and Adjusting, "Fuel System - Prime" for more information.
-

Product: VIBRATORY COMPACTOR

Model: CB-334D VIBRATORY COMPACTOR 3JZ

Configuration: CB-334D Vibratory Compactor 3JZ00001-UP (MACHINE) POWERED BY 3013 Engine

Disassembly and Assembly 3003, 3013, 3014 and 3024 Engines for Caterpillar Built Machines

Media Number -SEN5027-05

Publication Date -01/05/2005

Date Updated -16/05/2005

i01428959

Fuel Shutoff Solenoid - Remove and Install

SMCS - 1259-010

Removal Procedure

NOTICE

Keep all parts clean from contaminants.

Contaminants may cause rapid wear and shortened component life.

NOTICE

Care must be taken to ensure that fluids are contained during performance of inspection, maintenance, testing, adjusting and repair of the product. Be prepared to collect the fluid with suitable containers before opening any compartment or disassembling any component containing fluids.

Refer to Special Publication, NENG2500, "Caterpillar Tools and Shop Products Guide" for tools and supplies suitable to collect and contain fluids on Caterpillar products.

Dispose of all fluids according to local regulations and mandates.

Note: Disconnect all electrical connections to the fuel shutoff solenoid before proceeding. Mark all connections for later installation.

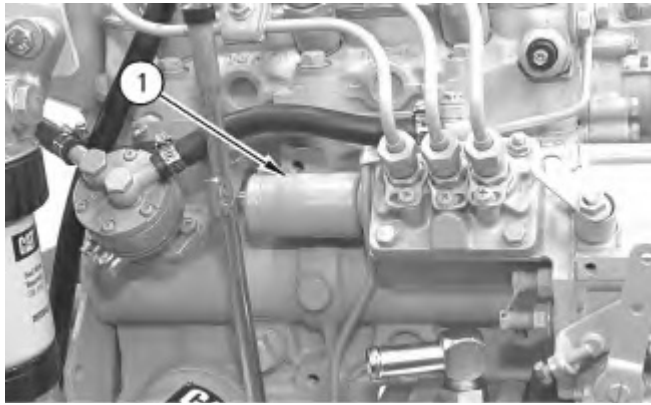


Illustration 1

g00592462

1. Remove fuel shutoff solenoid (1) from the governor by rotating fuel shutoff solenoid (1) in a counterclockwise direction.
2. Remove the O-ring seal from fuel shutoff solenoid (1). Inspect the O-ring seal for wear or for damage. If the O-ring seal is worn or damaged, use a new part for replacement.

Installation Procedure

NOTICE

Keep all parts clean from contaminants.

Contaminants may cause rapid wear and shortened component life.

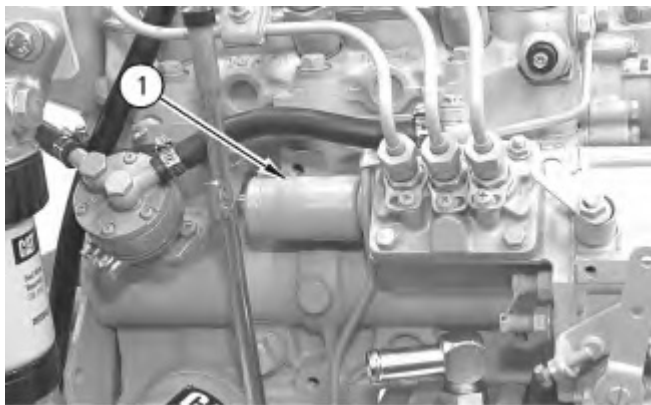


Illustration 2

g00592462

1. Install the O-ring seal onto fuel shutoff solenoid (1).

Thank you so much for reading.
Please click the “Buy Now!”
button below to download the
complete manual.



After you pay.

You can download the most
perfect and complete manual in
the world immediately.

Our support email:

ebooklibonline@outlook.com