

Product: VIBRATORY COMPACTOR

Model: CS-74B VIBRATORY COMPACTOR 441

Configuration: CS74B Compactor 44100001-UP (MACHINE) POWERED BY C6.6 Engine

Disassembly and Assembly

CP74B, CS74B, CP76B, CS76B, CS78B and CS79B Vibratory Soil Compactors Machine Systems

Media Number -UENR0166-10

Publication Date -01/01/2015

Date Updated -01/10/2018

i02385105

Axle Housing, Axle Shaft, and Wheel Flange - Disassemble

SMCS - 3260-015; 4057-015; 4234-015

Disassembly Procedure

Table 1

Required Tools			
Tool	Part Number	Part Description	Qty
A	1P-1861	Retaining Ring Pliers	1

Start By:

- a. Remove the axle housing, the axle shaft, and the wheel flange from the axle. Refer to Disassembly and Assembly, "Axle Housing, Axle Shaft, and Wheel Flange - Remove".
 - b. Remove the final drive planetary from the axle. Refer to Disassembly and Assembly, "Final Drive Planetary - Remove".
-



Illustration 1

g01189608

1. Remove axle shaft (1).

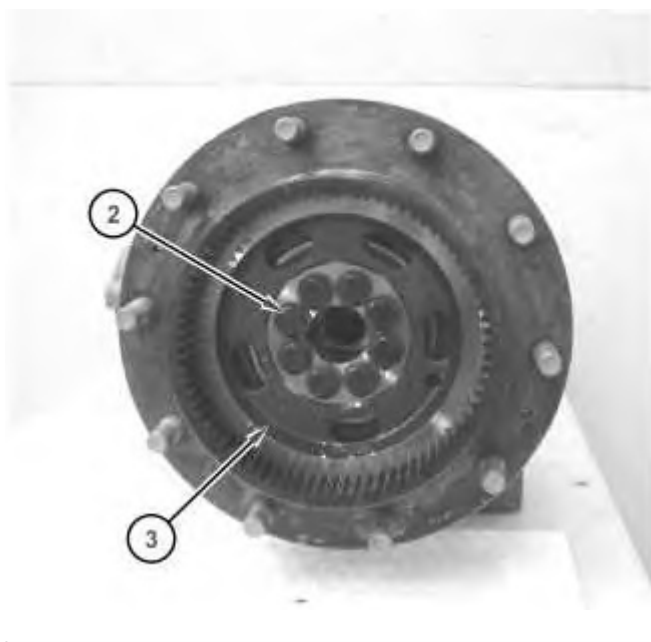


Illustration 2

g01189610

2. Remove bolts (2) from hub (3).

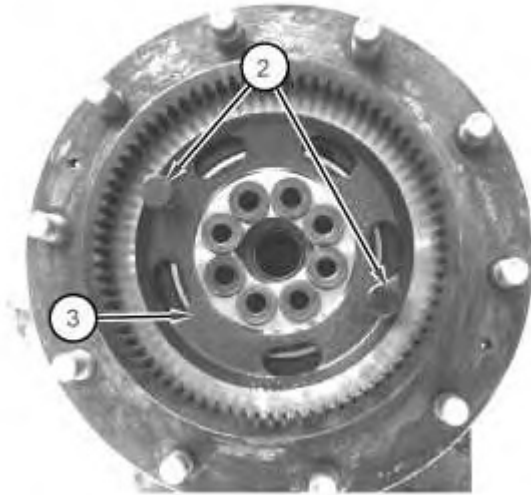


Illustration 3

g01189612

3. Use bolts (2) that were removed in Step 2 and install bolts (2) into the threaded holes in hub (3). Tighten bolts (2) in order to remove hub (3).
-

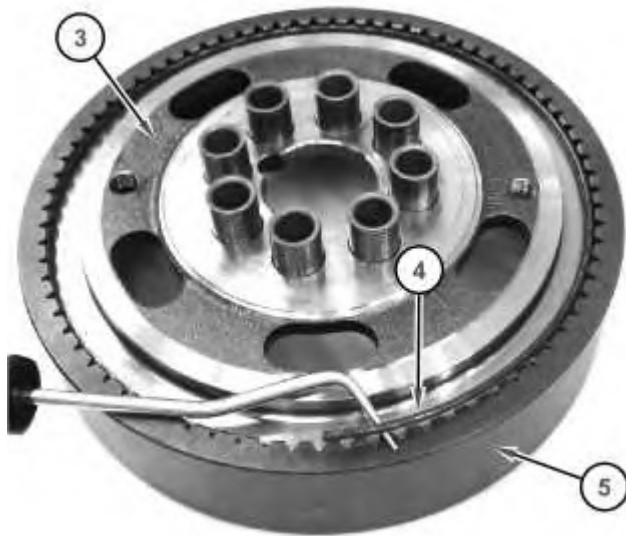


Illustration 4

g01189613

4. Remove ring (4). This will allow ring gear (5) to separate from hub (3).
-



Illustration 5

g01189616

5. Remove O-ring seal (6).



Illustration 6

g01189617

6. Remove bearing cone (7) from hub (8). Remove hub (8).



Illustration 7

g01189623

7. Remove seal (9) and bearing cups (10).

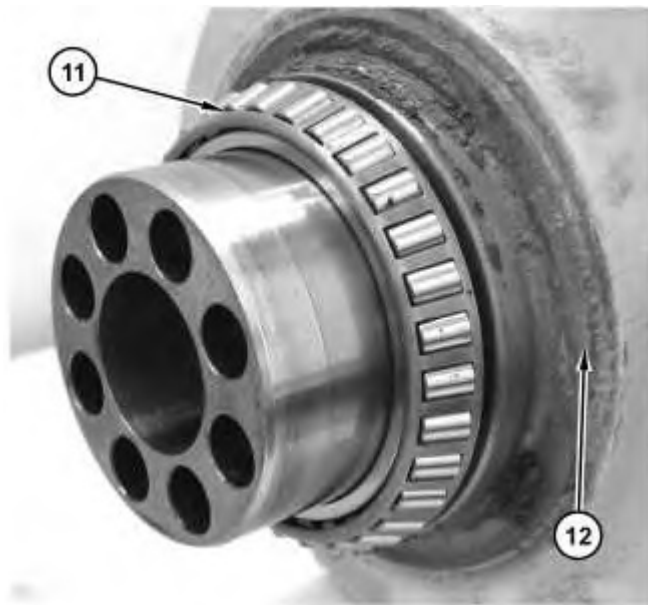


Illustration 8

g01189632

8. Remove bearing cone (11) from hub (12).

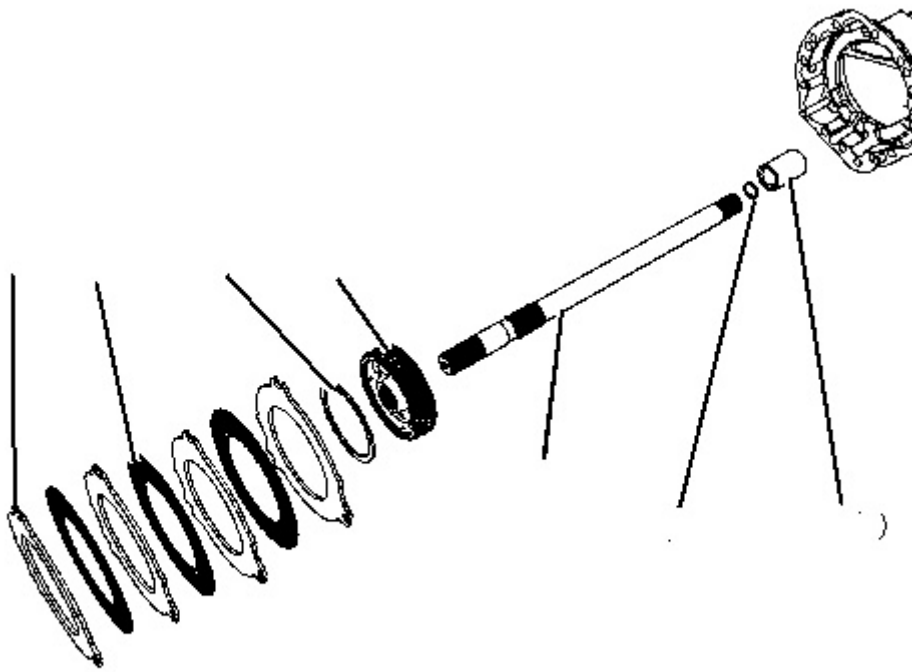


Illustration 9

g01189658

9. Remove axle shaft (17), plates (13), brake discs (14) and carrier (16). If necessary, remove retaining ring (15). Remove sleeve (19). Use Tooling (B) and remove retaining ring (18) from sleeve (19).
-

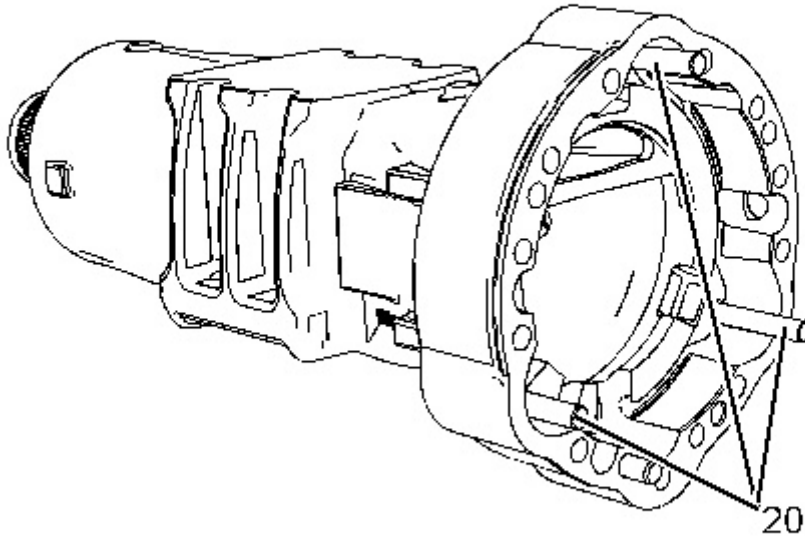


Illustration 10

g01189659

10. Remove dowel pins (20).
-

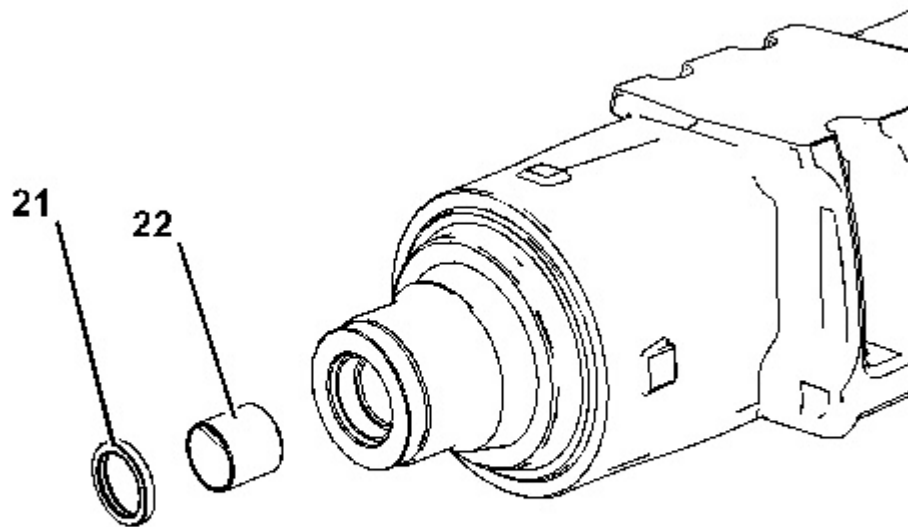


Illustration 11

g01189661

11. If necessary, remove seal (21) and bushing (22).

Product: VIBRATORY COMPACTOR

Model: CS-74B VIBRATORY COMPACTOR 441

Configuration: CS74B Compactor 44100001-UP (MACHINE) POWERED BY C6.6 Engine

Disassembly and Assembly

CP74B, CS74B, CP76B, CS76B, CS78B and CS79B Vibratory Soil Compactors Machine Systems

Media Number -UENR0166-10

Publication Date -01/01/2015

Date Updated -01/10/2018

i02385332

Axle Housing, Axle Shaft, and Wheel Flange - Assemble

SMCS - 3260-016; 4057-016; 4234-016

Assembly Procedure

Table 1

Required Tools			
Tool	Part Number	Part Description	Qty
A	1P-1861	Retaining Ring Pliers	1
B	1P-0520	Driver Gp	1

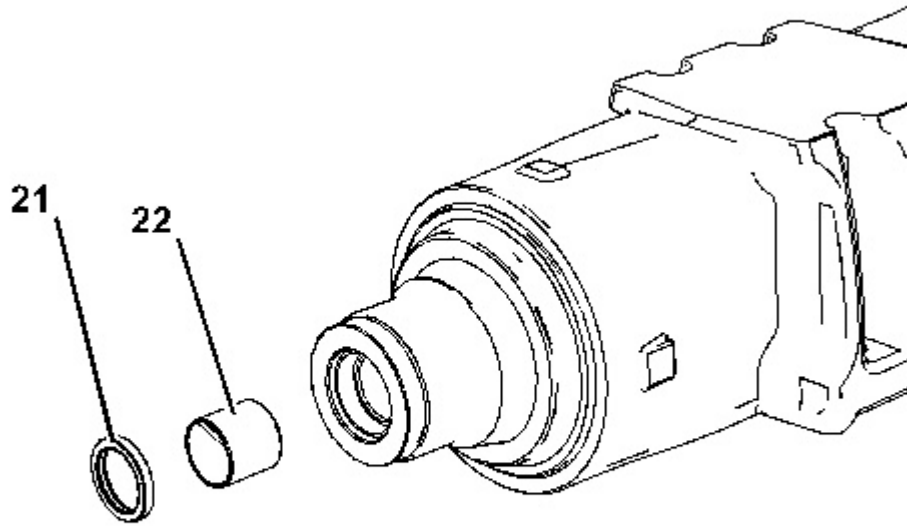


Illustration 1

g01189661

1. Use Tooling (B) and install bushing (22) and seal (21).
-

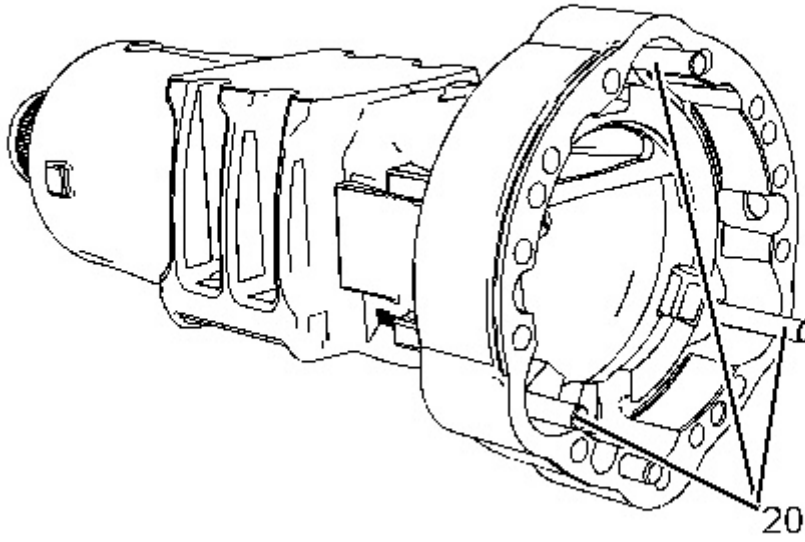


Illustration 2

g01189659

2. Install dowel pins (20).
-

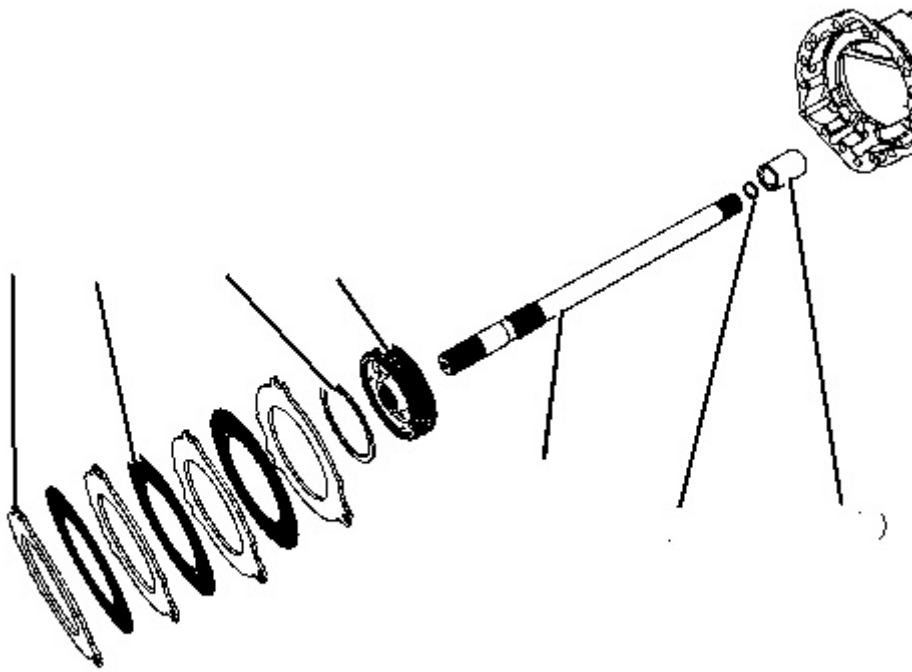


Illustration 3

g01189658

3. Use Tooling (A) and install retaining ring (18) into sleeve (19). Install sleeve (19). Install retaining ring (15) into carrier (16). Install axle shaft (17). Install carrier (16) onto axle shaft (17). Install brake discs (14) and plates (13).

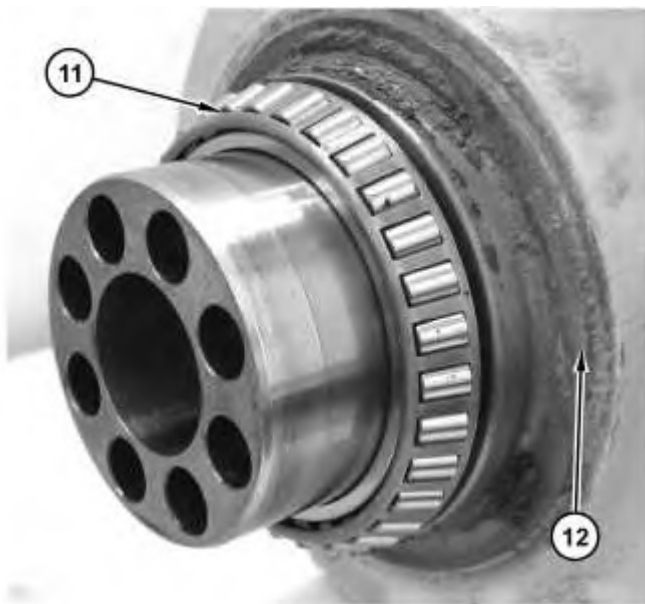


Illustration 4

g01189632

4. Install bearing cone (11) onto hub (12).

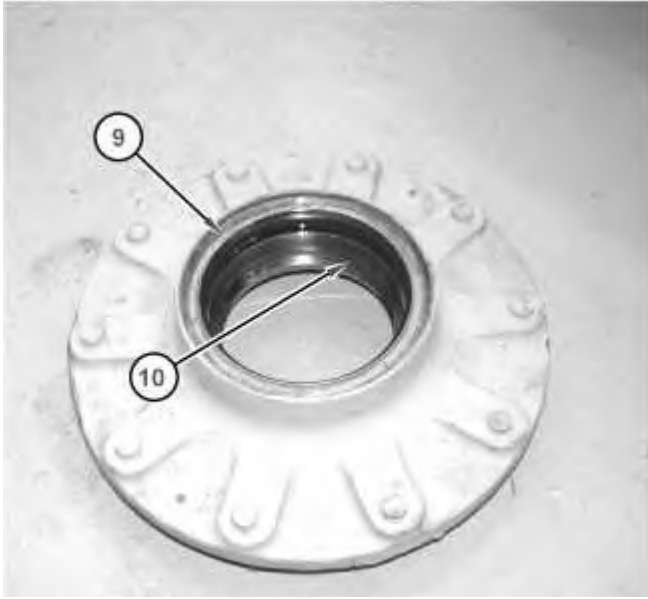


Illustration 5

g01189623

5. Use Tooling (B) and install bearing cups (10). Install seal (9).



Illustration 6

g01189617

6. Install hub (8). Install bearing cone (7) into hub (8).



Illustration 7

g01189616

Note: Check the O-ring seal for wear or for damage. If necessary, replace the O-ring seal.

7. Install O-ring seal (6).



Illustration 8

g01189613

8. Install hub (3) into ring gear (5). Install ring (4).

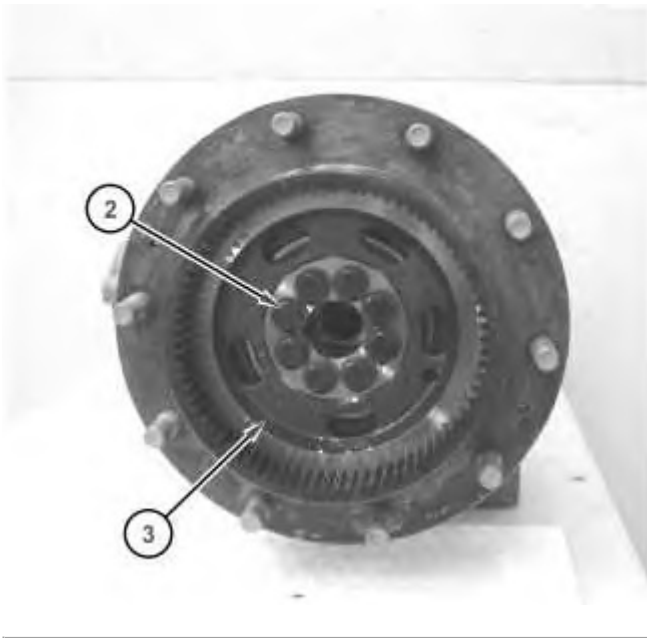


Illustration 9

g01189610

9. Position hub (3) and install bolts (2). Tighten bolts (2) to a torque of 230 N·m (170 lb ft).



Illustration 10

g01189608

10. Install axle shaft (1).

End By:

- a. Install the axle housing. Refer to Disassembly and Assembly, "Axle Housing, Axle Shaft, and Wheel Flange - Install".
- b. Install the final drive planetary. Refer to Disassembly and Assembly, "Final Drive Planetary - Install".

Product: VIBRATORY COMPACTOR

Model: CS-74B VIBRATORY COMPACTOR 441

Configuration: CS74B Compactor 44100001-UP (MACHINE) POWERED BY C6.6 Engine

Disassembly and Assembly

CP74B, CS74B, CP76B, CS76B, CS78B and CS79B Vibratory Soil Compactors Machine Systems

Media Number -UENR0166-10

Publication Date -01/01/2015

Date Updated -01/10/2018

i02385101

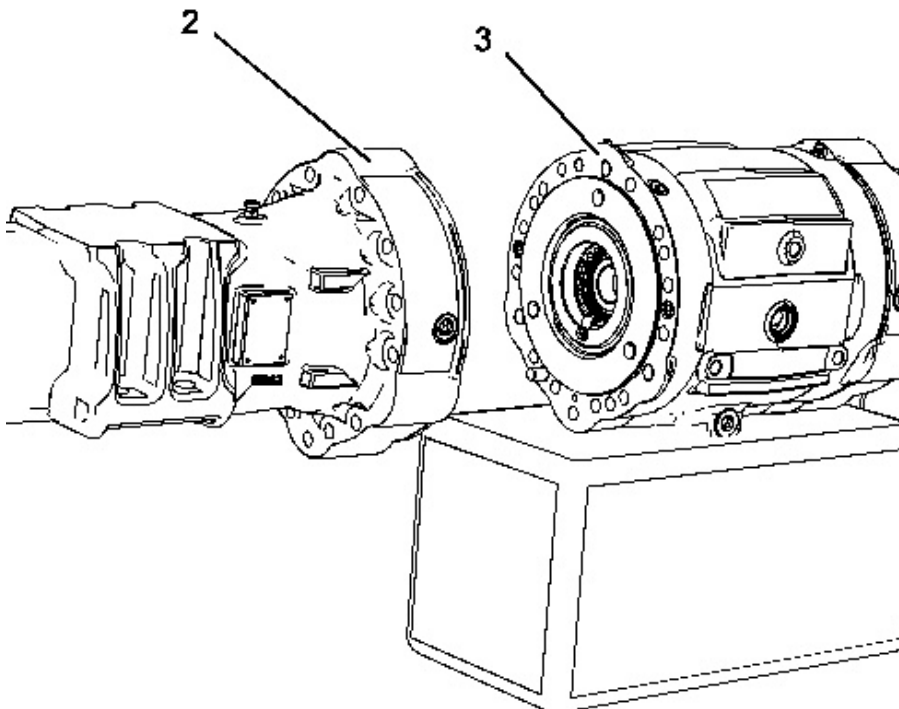
Axle Housing, Axle Shaft, and Wheel Flange - Install

SMCS - 3259-012; 3260-012; 4057-012; 4234-012

Installation Procedure

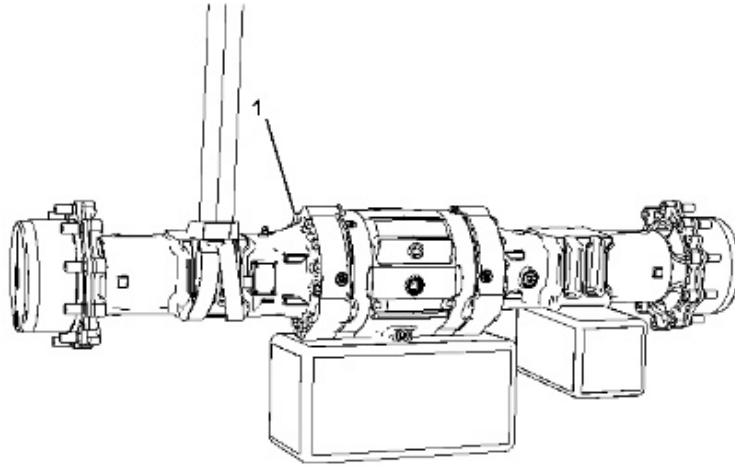
Table 1

Required Tools			
Tool	Part Number	Part Description	Qty
A		Loctite 270	1



Note: Align the location marks that were made during the removal procedure.

1. Attach a suitable lifting device onto axle housing (2). The weight of axle housing (2) is approximately 147 kg (325 lb). Position axle housing (2) onto brake cylinder assembly (3).



2. Apply Tooling (A) on the threads of bolts (1). Install bolts (1). Tighten bolts (1) to a torque of 280 N·m (207 lb ft).
3. Repeat Steps 1 and 2 for the other side.
4. Fill the axle with oil. Refer to Operation and Maintenance Manual, "Axle Oil (Rear) - Change" and Operation and Maintenance Manual, "Capacities (Refill)".

End By:

- a. Install the axle onto the machine. Refer to Disassembly and Assembly, "Axle - Install".
-

Product: VIBRATORY COMPACTOR

Model: CS-74B VIBRATORY COMPACTOR 441

Configuration: CS74B Compactor 44100001-UP (MACHINE) POWERED BY C6.6 Engine

Disassembly and Assembly

CP74B, CS74B, CP76B, CS76B, CS78B and CS79B Vibratory Soil Compactors Machine Systems

Media Number -UENR0166-10

Publication Date -01/01/2015

Date Updated -01/10/2018

i06296803

Axle Housing (Parking Brake, Differential and Bevel Gear) - Disassemble

SMCS - 3256-016; 3258-016; 3260-016; 4267-016

Disassembly Procedure

Table 1

Required Tools			
Tool	Part Number	Part Description	Qty
A	283-3591	Spanner	1
B	1P-2321	Combination Puller	1
C	1P-1859	Retaining Ring Pliers	1
D	263-2152	Spline Wrench	1
E	263-2153	Spanner Wrench	1
F	8H-0663	Bearing Puller Gp	1

Start By:

- A. Remove the axle housing, the axle shaft, and the wheel flange. Refer to Disassembly and Assembly, "Axle Housing, Axle Shaft, and Wheel Flange - Remove".
-

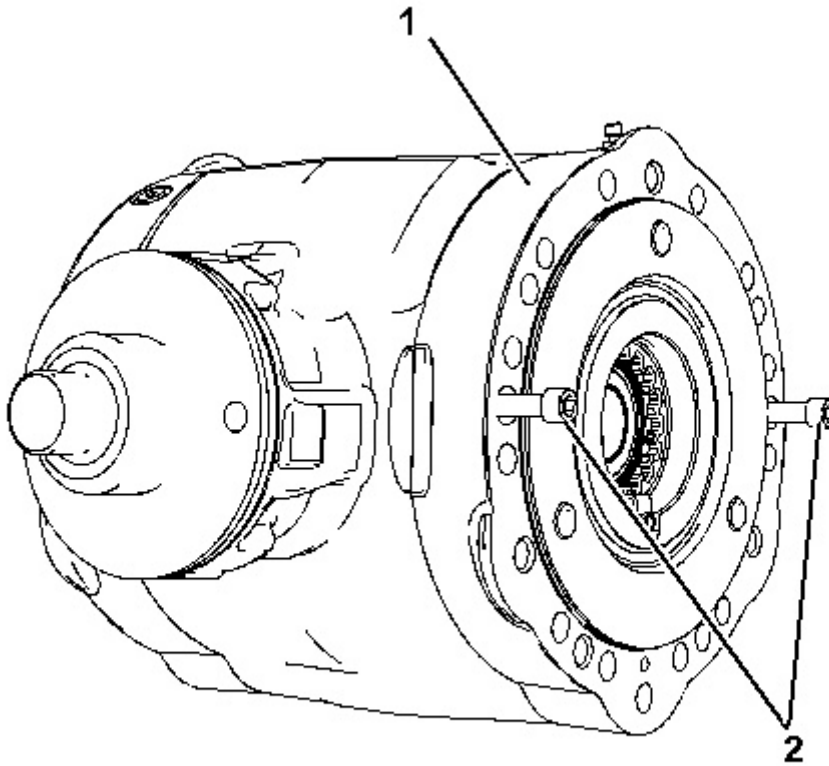


Illustration 1

g01074031

! WARNING

Personal injury can result from being struck by parts propelled by a released spring force.

Make sure to wear all necessary protective equipment.

Follow the recommended procedure and use all recommended tooling to release the spring force.

-
1. Remove bolts (2) from brake cylinder (1) .
-

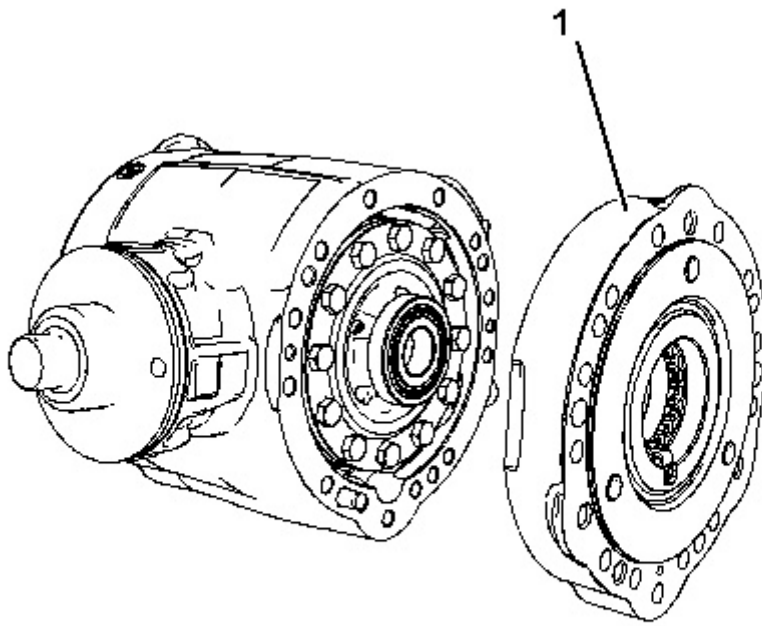


Illustration 2

g01074042

2. Remove brake cylinder (1) . Remove the differential and bevel gear assembly from the right side of the center housing.
-

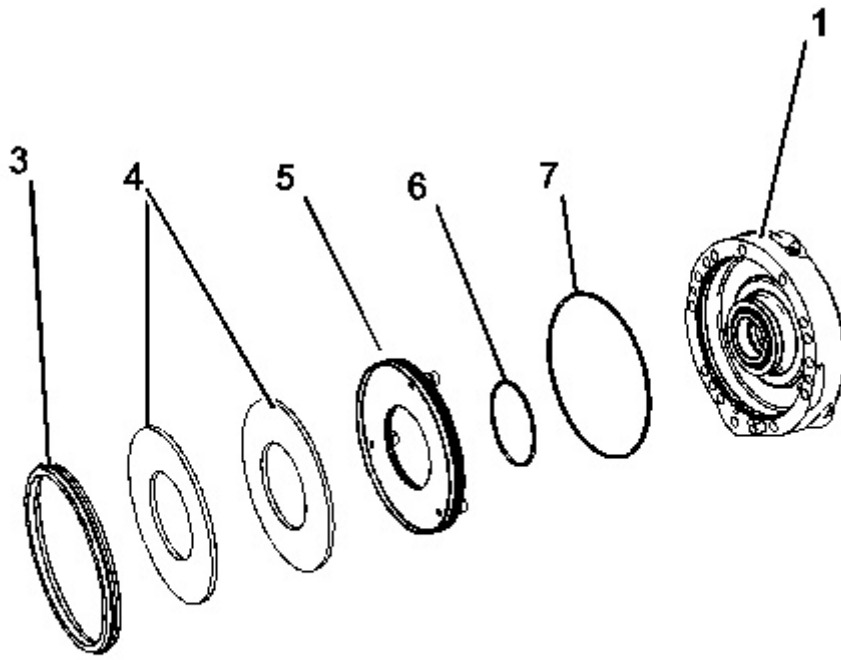


Illustration 3

g01074052

3. Remove piston (5) from brake cylinder (1) . Remove sleeve (3) , bevel washers (4) , O-ring seal (6) , and O-ring seal (7) .
-

Thank you so much for reading.
Please click the “Buy Now!”
button below to download the
complete manual.



After you pay.

You can download the most
perfect and complete manual in
the world immediately.

Our support email:

ebooklibonline@outlook.com