

Page Title	Page Number
100 - SPANNER	101-01-1582
100 - TOOLS BOX - SUPER NARROW	101-02-1583
100 - TOOLS	101-03-1584
100 - PROTECTOR	101-04-1585
100 - GREASER	101-05-1586
100 - ADHESIVES (SPANISH)	101-06E-1559
100 - ADHESIVES (ENGLISH)	101-06I-1561
100 - ADHESIVES (PORTUGUESE)	101-06-1556
100 - ADHESIVES (SPANISH)	101-07E-1560
100 - ADHESIVES (ENGLISH)	101-07I-1562
100 - ADHESIVES (PORTUGUESE)	101-07-1557
20 - CYLINDER BLOCK	21-01-1590
20 - FLYWHEEL AND GEAR RIM	21-02-1604
20 - CYLINDER HEAD	21-03-1595
20 - VALVE MECHANISM	21-04-1593
20 - CRANKSHAFT MECHANISM	21-05-1591
20 - GEAR HOUSING	21-06-1592
20 - ROCKER	21-07-1596
20 - SUMP	21-08-1594
20 - COVER HEAD	21-09-1597
20 - FIXATION ENGINE	21-10-1589
20 - BEARING	21-11-1599
20 - EXHAUST MANIFOLD	21-12-1598
20 - SHORT ENGINE	21-13-1588
20 - ENGINE INSTALLATION	21-14-1587
20 - MUFFLER	21-15-1607
20 - INJECTION PUMP	22-01-1601
20 - OIL FILTER	22-02-1602
20 - FUEL SYSTEM ALIMENTATION	22-03-1610
20 - FUEL COVER	22-04-1611
20 - FUEL FLOWMETER	22-05-1612
20 - FUEL FILTER	22-06-1613
20 - AIR SYSTEM ADMISSION - DRY ELEMENT	22-07-1605
20 - THROTTLE	22-08-1614
20 - AIR FILTER	22-09-1606
20 - RADIATOR	23-01-1608
20 - WATER PUMP	23-02-1600
20 - GASKET KIT	28-01-1603
30 - STARTING HEATER	31-01-1627
30 - BATTERY - WET	32-01-1615
30 - ELECTRICAL SYSTEM	32-02-1551
30 - FRONT ELETRIC SYSTEM	32-02-1616
30 - ELECTRIC SYSTEM - WITHOUT TEMPERATURE INDICATOR	32-03-1619
30 - ELECTRIC SYSTEM - WITH TEMPERATURE INDICATOR	32-04-1620
30 - EMERGENCY LIGHT AND DIRECTION INDICATOR LIGHTS KIT	32-05-1564
30 - WORKING HEADLIGHT	32-06-1553
30 - HORN KIT	32-08-1554
30 - ELECTRIC SYSTEM - HARNESS	32-09-1629
30 - BRAKE LIGHT KIT	32-10-1630
30 - LIGHTING SYSTEM	39-01-1625

TABLE OF CONTENT

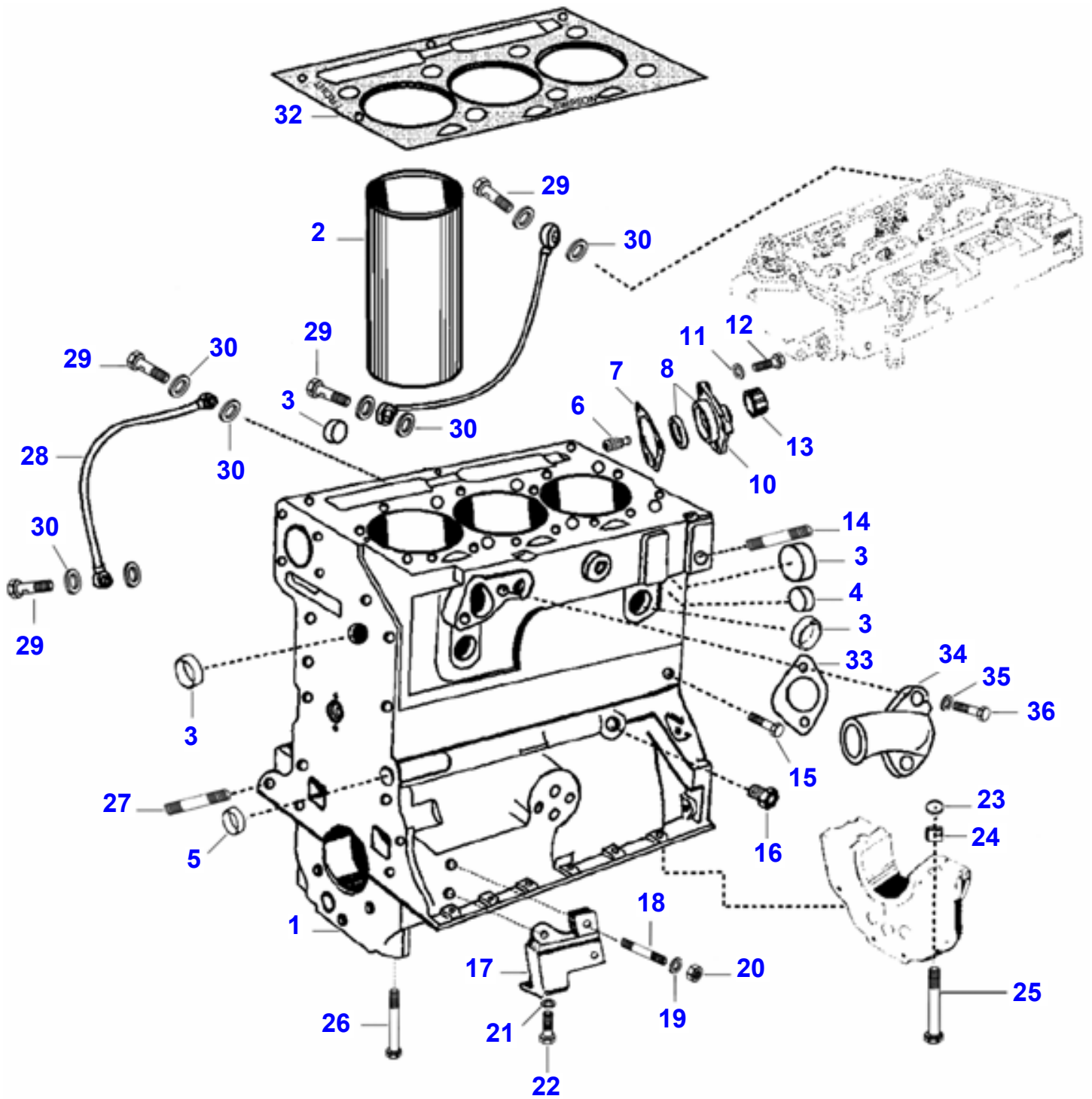
30 - KIT LIGHTS BRACKET	39-02-1626
40 - TRANSMISSION	41-01-1631
40 - DUAL CLUTCH - 12" - ND - 21 FURROW	41-02-1632
40 - CLUTCH - DUAL	41-03-1633
40 - CLUTCH SPLIT TORQUE - 12" - ND - 21 FURROW	41-04-1634
40 - CLUTCH SPLIT TORQUE	41-05-1635
40 - COVER AND CONTROLS	41-06-1649
40 - COVER AND CONTROLS	41-07-1650
40 - PIPE AND FILTER	41-08-1651
40 - COVER AND LEVER PTO - IPTO	41-09-1652
40 - TRANSMISSION - 8 SPEED - SLIP	42-01-1636
40 - TRANSMISSION	42-02-1637
40 - SELECTOR FORKS	42-03-1638
40 - GEAR AND SHAFT	42-04-1639
40 - KIT CARRIER	42-05-1640
40 - BRACKET AND LEVERS	44-01-1641
40 - COLLAR	44-02-1642
40 - HOUSING	44-03-1643
40 - REAR AXLE- DIFFERENTIAL LOCK PEDAL	46-01-1644
40 - INDEPENDENT POWER TAKE OFF - 540 RPM	46-02-1645
40 - INDEPENDENT POWER TAKE OFF - 540 RPM	46-03-1646
40 - GEAR TRAIN	46-04-1647
40 - INDEPENDENT POWER TAKE-OFF CLUTCH	46-05-1648
50 - BRAKE - OIL COOLED	51-01-1653
50 - BRAKE OIL COOLED	51-02-1654
50 - BRAKE DRIVE	51-03-1655
50 - BRAKE PEDALS AND CLUTCH - 4 WHEELS DRIVE	51-04-1656
50 - BRAKE PEDALS AND CLUTCH - 4 WHEELS DRIVE	51-05-1657
50 - ROD - CLUTCH	51-06-1658
50 - ROD	51-07-1659
50 - LEVER KIT	51-08-1660
50 - BRAKE PEDAL - RIGHT HAND	51-09-1661
50 - BRAKE PEDAL - LEFT HAND	51-10-1662
50 - CLUTCH - PEDAL	51-11-1663
50 - ROD - BRAKE	51-12-1664
50 - LEVER - RIGHT HAND	51-13-1665
60 - HYDROSTATIC STEERING - 2 WHEELS DRIVE	61-01-1704
60 - HYDROSTATIC STEERING - 4 WHEELS DRIVE	61-02-1705
60 - CONTAINER	61-03-1706
60 - HYDROSTATIC UNIT - 2 WHEELS DRIVE - DANFOSS	61-04-1707
60 - HYDROSTATIC UNIT - 4 WHEELS DRIVE - DANFOSS	61-05-1708
60 - HYDRAULIC CYLINDER - STEERING	61-06-1745
60 - REAR AXLE - TRANSMISSION - 2 WHEELS DRIVE	62-01-1666
60 - REAR AXLE - TRANSMISSION - 4 WHEELS DRIVE	62-02-1667
60 - REAR AXLE - TRANSMISSION	62-03-1668
60 - PROPELLER AXLE	62-04-1669
60 - HALF AXLE	62-05-1685
60 - HALF AXLE	62-06-1686
60 - HALF AXLE	62-07-1687
60 - FRONT AXLE - 2 WHEELS DRIVE	62-08-1688
60 - FRONT AXLE - 2 WHEELS DRIVE	62-09-1689
60 - FRONT AXLE - 4 WHEELS DRIVE	62-10-1690

TABLE OF CONTENT

60 - FRONT AXLE	62-11-1691
60 - REAR AXLE - 2WD	62-12-1683
60 - REAR AXLE - 4WD	62-13-1684
60 - CENTRAL BEAM	62-14-1744
60 - REAR AXLE CENTRE HOUSING - 2 WHEELS DRIVE	64-01-1670
60 - REAR AXLE CENTRE HOUSING - 4 WHEELS DRIVE	64-02-1671
60 - MIDDLE BODY - 2 WHEELS DRIVE	64-03-1672
60 - MIDDLE BODY - 4 WHEELS DRIVE	64-04-1673
60 - COVER	64-05-1674
60 - FASTENER SIDE COVER	64-06-1675
60 - SIDE DRIVE BOX - INSTALLATION	64-07-1676
60 - SIDE DRIVE BOX - CONSTITUENT PARTS	64-08-1677
60 - PINION AND DIFERENTIAL - 2 WHEELS DRIVE	64-09-1678
60 - PINION AND DIFERENTIAL - 4 WHEELS DRIVE	64-10-1679
60 - FLANGE AND PINION	64-11-1680
60 - DIFFERENTIAL	64-12-1681
60 - FLANGE AND PINION	64-13-1682
60 - DIFFERENTIAL - CARRARO - 20.14	64-14-1695
60 - FRONT AXLE - CARRARO - 20.14	64-15-1696
60 - FRONT AXLE - CARRARO - 20.14	64-16-1697
60 - FRONT AXLE - CARRARO - 20.14	64-17-1698
60 - FRONT AXLE - CARRARO	64-18-1693
60 - FRONT AXLE HOUSING - CARRARO - 20.14	64-19-1694
60 - CARDAN SHAFT	64-20-1692
60 - FRONT AXLE - ZF	64-21-1699
60 - FRONT AXLE - ZF - APL335-SIDE DRIVE	64-22-1703
60 - FRONT AXLE - ZF - APL335-SIDE DRIVE	64-23-1701
60 - FRONT AXLE - ZF - APL335-SIDE DRIVE	64-24-1702
60 - FRONT AXLE - ZF - APL335-SIDE DRIVE	64-25-1700
70 - FUEL TANK	71-01-1609
70 - WHEELS - 6.00 X 16 - 2 WHEELS DRIVE	72-01-1709
70 - WHEELS - 8.00 X 18 R1 - 4 WHEELS DRIVE	72-02-1710
70 - REAR WHEELS - 14.9 X 24 R1	72-03-1711
70 - REAR WHEELS - 12.4 X 28 R1	72-04-1712
70 - REAR WHEELS - 12.4 X 24 R1	72-05-1713
70 - REAR WHEELS - 14.9 X 24 R2	72-06-1714
70 - WHEEL AND TYRE	72-07-1715
70 - WHEEL AND TYRE - LEFT HAND	72-08-1716
70 - REAR WHEELS - 16.9 X 24 R1 8L	72-09-1717
70 - SUPPORT AND FRONT WEIGHTS	79-01-1563
70 - REAR WHEEL WEIGHTS - 1 + 1 X 40 KGF	79-03-1720
70 - REAR WEIGHTS - 2 + 2 X 40 KG	79-04-1721
70 - REAR WHEEL WEIGHTS - 1 + 1 X 52 KGF	79-05-1722
70 - REAR WHEEL WEIGHTS - 2 + 2 X 52 KGF	79-06-1723
80 - FRONT SHIELDS	81-01-1552
80 - STEERING FRAME	81-02-1725
80 - FOOTSTEP - WITHOUT SAFETY FRAME	81-03-1726
80 - FOOTSTEPS - 2WD - WITH SAFETY FRAME	81-04-1727
80 - FOOTSTEPS - 4WD	81-05-1728
80 - REAR MUDGUARD	81-06-1566
80 - MUDGUARD SUPPORT 4RM	81-08-1567

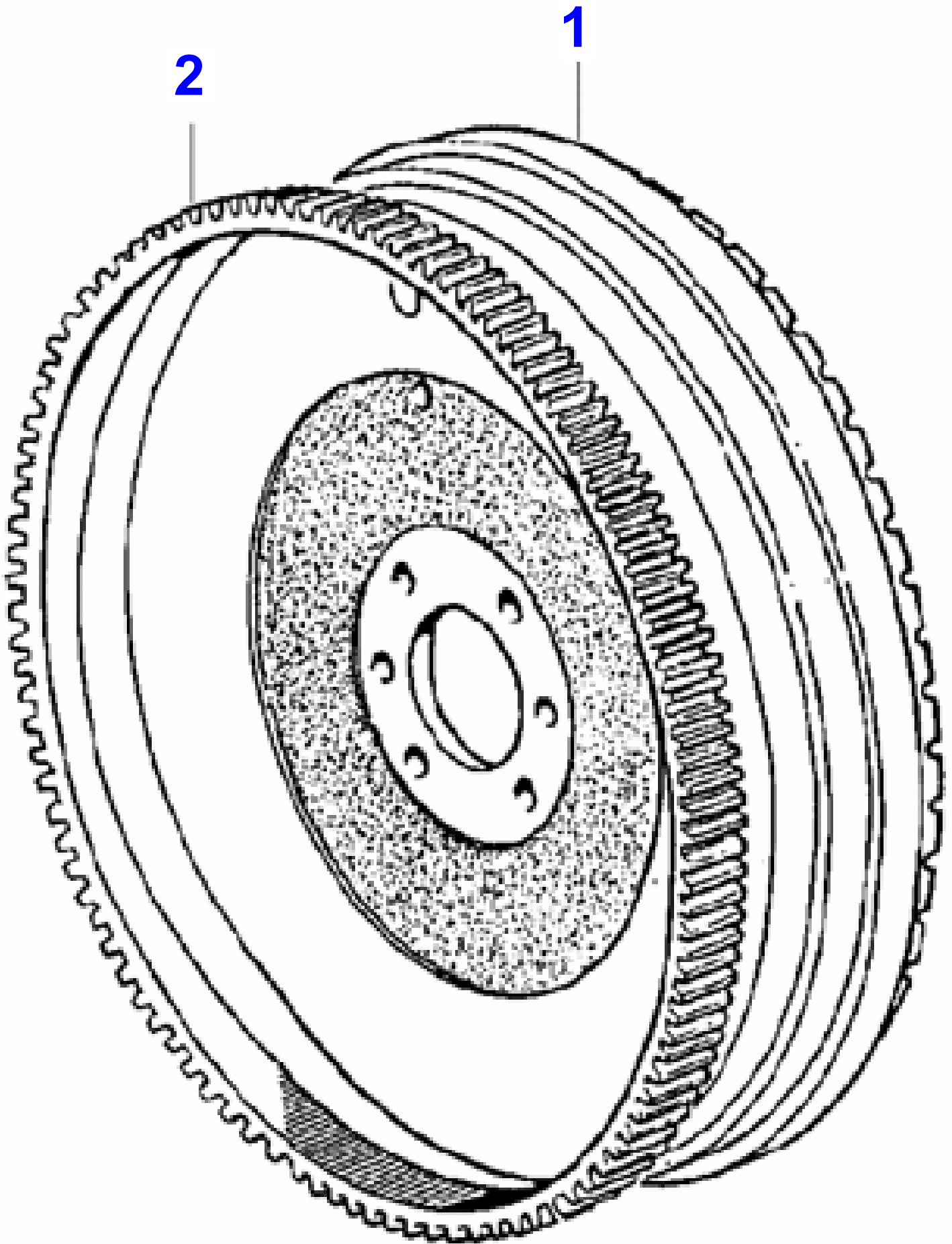
TABLE OF CONTENT

80 - SEAT - NARROW	81-09-1732
80 - SEAT - SEAT BELT	81-10-1733
80 - SAFETY FRAME	81-11-1734
80 - CANOPY	81-12-1735
90 - HYDRAULIC ARMS	91-01-1737
90 - LEVELLING ARM	91-02-1738
90 - LINKS	91-03-1739
90 - LINKS	91-04-1740
90 - STABILISER - STANDARD	91-05-1741
90 - STABILISER	91-06-1742
90 - HYDRAULIC PUMP AUXILIARY	91-07-1743
90 - HYDRAULIC LIFT COVER - STANDARD	91-08-1746
90 - HYDRAULIC LIFT COVER	91-09-1747
90 - HYDRAULIC LIFT COVER	91-10-1748
90 - HYDRAULIC LIFT - DEPTH QUADRANT	91-11-1749
90 - HYDRAULIC LIFT - DEPTH QUADRANT	91-12-1750
90 - HYDRAULIC LIFT COVER - LINK	91-13-1751
90 - HYDRAULIC LIFT - HINGE SUPPORT	91-14-1752
90 - HYDRAULIC LIFT - QUADRANT SUPPORT	91-15-1753
90 - HYDRAULIC LIFT COVER	91-16-1754
90 - HYDRAULIC CYLINDER	91-17-1755
90 - HYDRAULIC LIFT PUMP - ISYP - WITH IPTO	91-18-1756
90 - HYDRAULIC PUMP - COLLECTOR AND GLOVE	91-19-1757
90 - HYDRAULIC PUMP	91-20-1758
90 - BODY	91-21-1759
90 - HYDRAULIC LIFT PUMP - STRAINER UNIT	91-22-1760
90 - HYDRAULIC PUMP - OSCILLATOR VALVE	91-23-1761
90 - DRAWBAR	99-01-1736
90 - REMOTE CONTROL - 1 BODDY	99-02-1762
90 - REMOTE CONTROL - 1 BODDY	99-03-1763
90 - COUPLER	99-04-1764
90 - DIVIDING VALVE	99-05-1765
90 - DIVIDING VALVE - ALBARUS	99-06-1766
90 - DIVIDING VALVE - HIDROVER	99-07-1767



20 - CYLINDER BLOCK

Item	Part Number	Qty	Description
1	V84545900	1	Cylinder block
2	V84545000	3	Liner
3	V85311900	5	Ring Alt. 85123500
4	V85311800	1	Ring
5	V85322200	1	Bushing
6	V84545100	1	Pin
7	V85308200	1	Gasket
8	V85318500	1	Washer
9	V84545200	1	Seal
10	V85318200	1	Cover
11	V85312700	3	Washer
12	V85316600	2	Screw
	V85316500	1	Screw
13	V85314800	1	Cap
14	V85306400	1	Stud bolt
15	V85314600	1	Screw
16	V85309200	1	Adapter
17	V85310400	1	Bracket
18	V85317700	2	Stud bolt
19	V85312800	2	Washer
20	V85316300	1	Nut
21	V85312900	2	Washer
22	V85317100	1	Screw
23	V85309300	2	O-ring
24	V85310100	2	Bushing
25	V85310200	2	Screw
26	V85310300	6	Screw
27	V85317600	1	Stud bolt
28	V84545300	1	Hose
29	V84545400	4	Banjo bolt
30	V84545500	8	Washer
31	V84545600	1	Hose
32	V84545700	1	Gasket
33	V85308300	1	Gasket
34	V85316000	1	Neck
35	V85313000	2	Washer
36	V85316600	2	Screw



Valtra

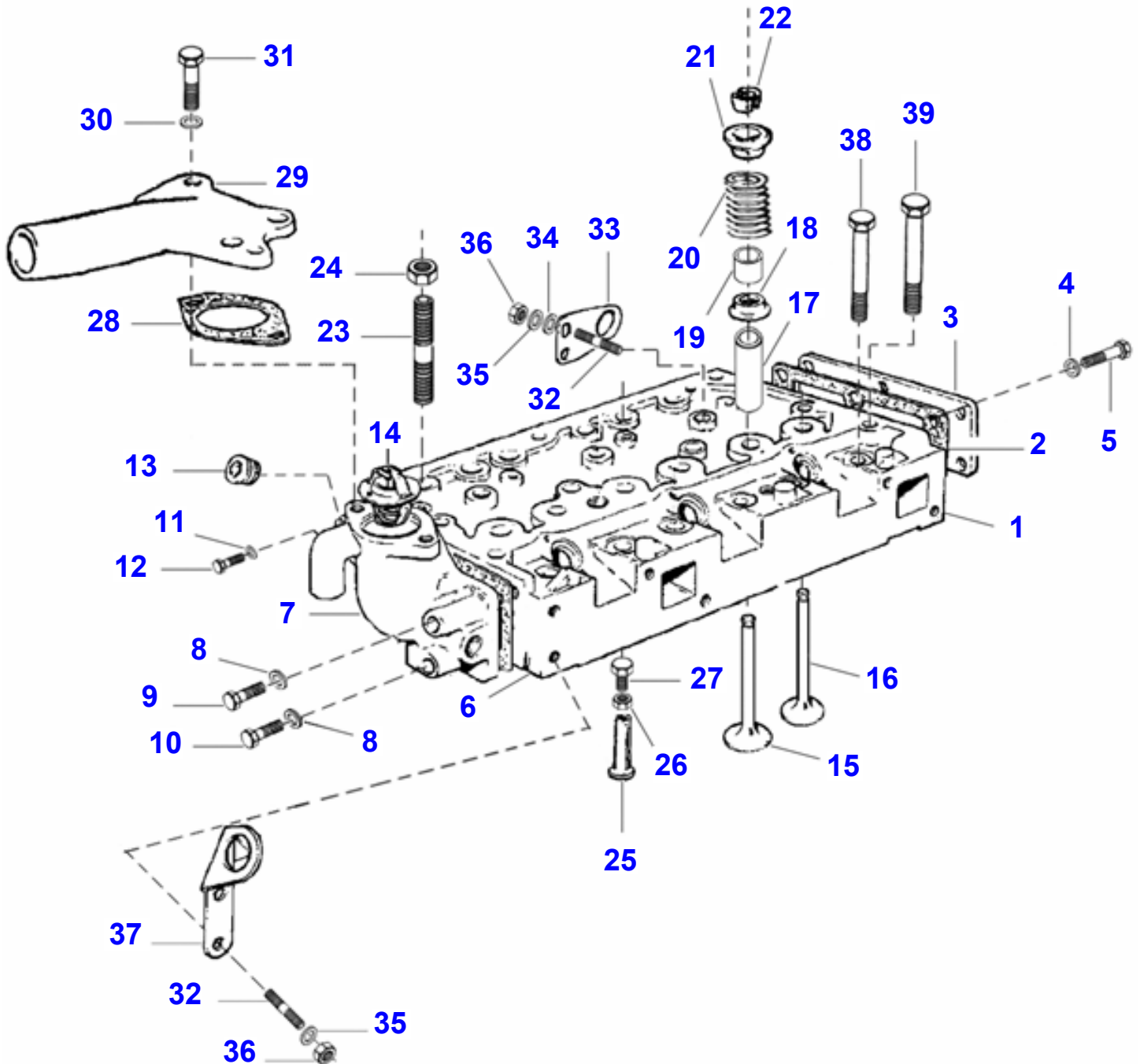
585 TRACTOR (BRAZIL)

VB585

20 - FLYWHEEL AND GEAR RIM

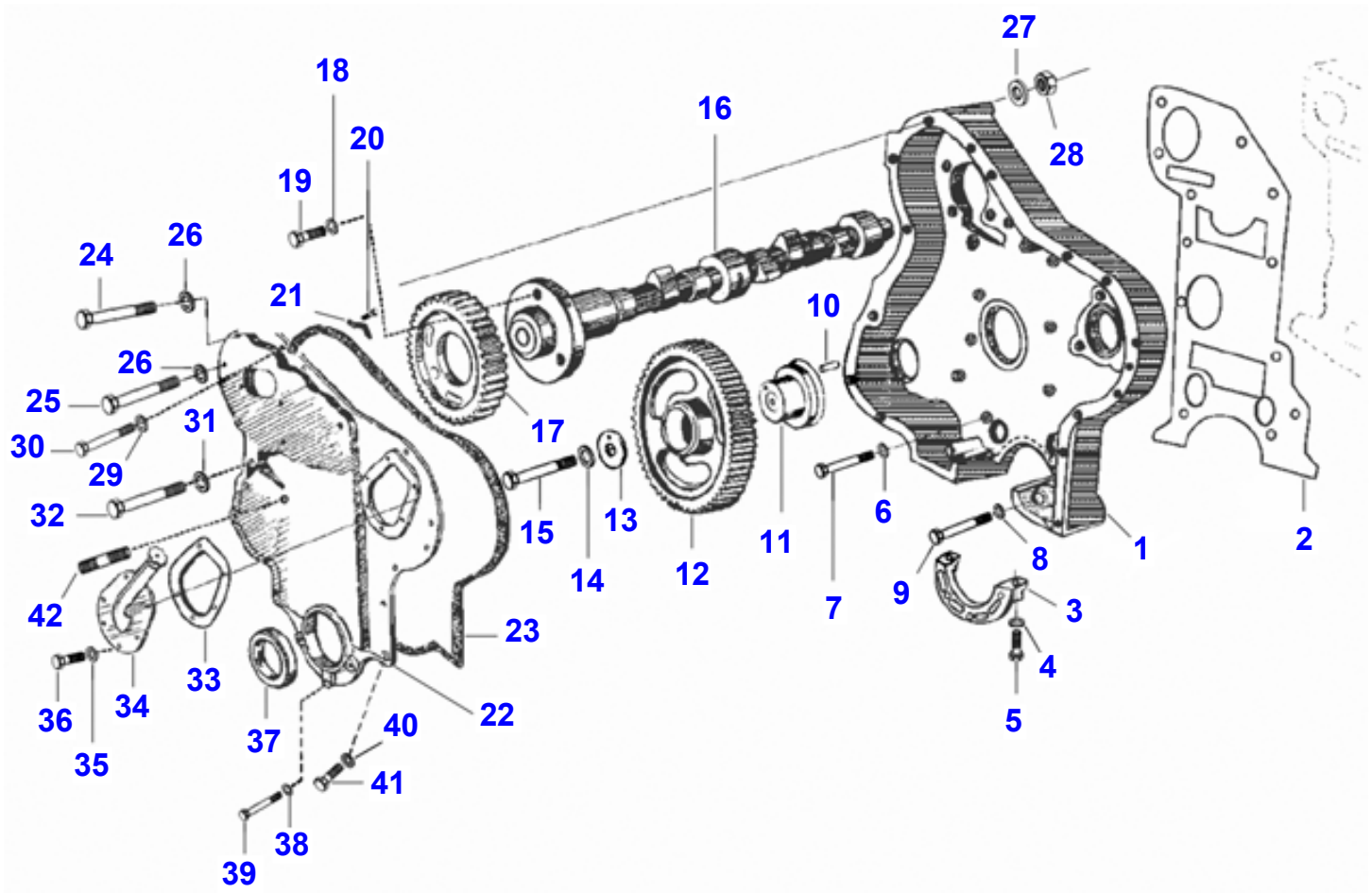
Page21-02-1604

Item	Part Number	Qty	Description
1	V84406600	1	Flywheel
2	V84406400	1	Gear rim



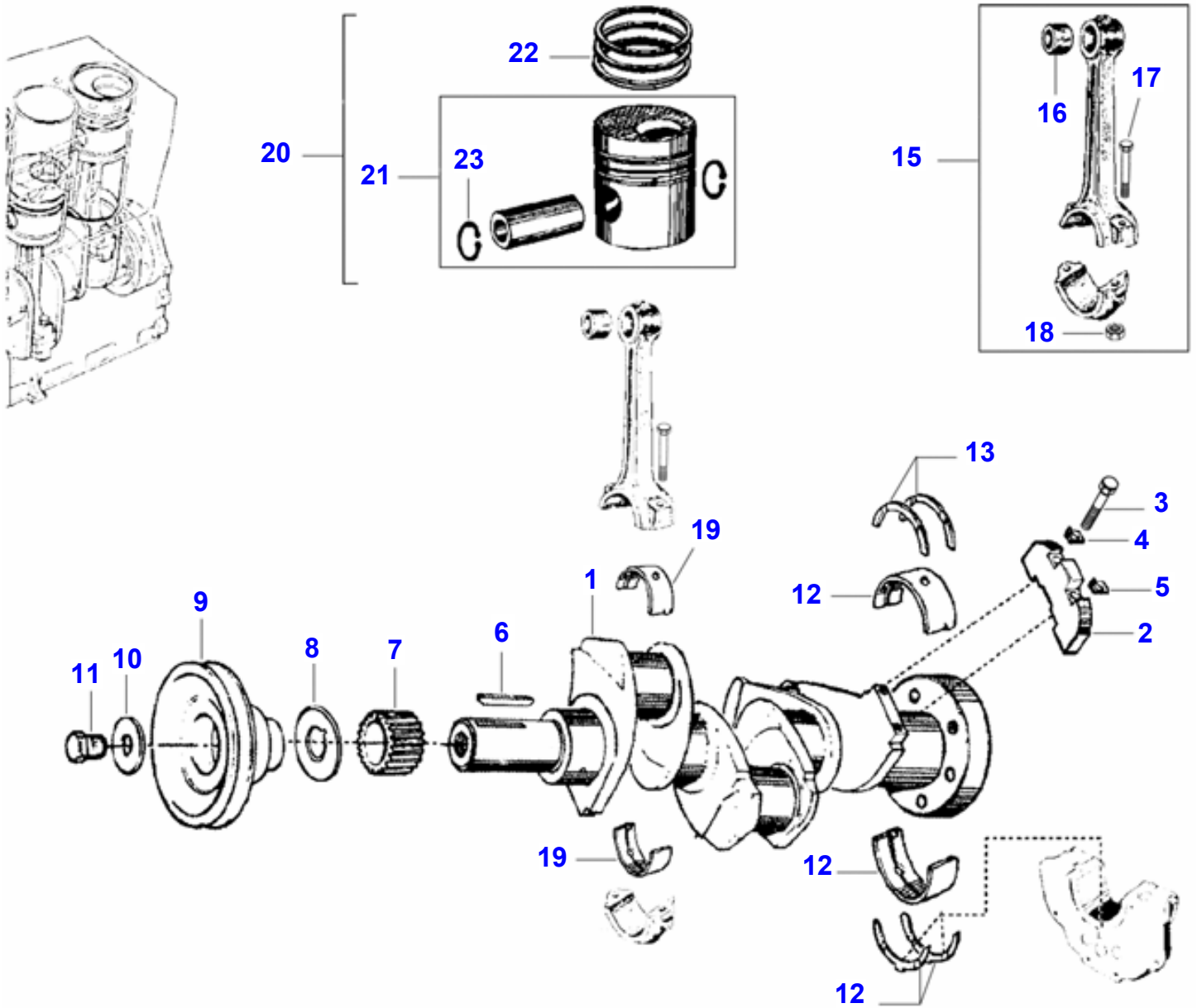
20 - CYLINDER HEAD

Item	Part Number	Qty	Description
1	V84549400	1	Head
2	V85308500	1	Gasket
3	V85313400	1	Cover
4	V85312700	6	Washer
5	V85316600	6	Screw M8 x 1.25
6	V85308600	1	Gasket
7	V85307100	1	Housing
8	V85318100	2	Washer
9	V85321100	1	Screw
10	V85316900	1	Screw
11	V85318100	3	Washer
12	V85316800	3	Bolt m10 x 1.5 M10 x 1.5
13	V85314000	1	Plug
14	V84549500	1	Thermostat
15	V84549600	3	Valve
16	V84549700	3	Valve
17	V84549800	6	Guide
18	V85315100	6	Washer
19	V84549900	6	Seal
20	V84550000	6	Spring
21	V84550100	6	Boot
22	V84550200	6	Ring
23	V85307400	3	Stud bolt
24	V84547200	3	Nut
25	V84550300	6	Pin
26	V85311500	6	Nut Alt. 85123400 (kit)
27	V84550400	6	Bolt Alt. 85123400 (kit)
28	V85308100	1	Gasket
29	V85307500	1	Connection
30	V85318100	2	Washer
31	V85316800	2	Bolt m10 x 1.5 M10 x 1.5
32	V85321500	4	Stud bolt m10 x 1.5 M10 x 1.5
33	V85318300	1	Bracket
34	V85312500	2	Washer
35	V85318100	4	Washer
36	V85319500	4	Nut m10 x 1.25 M10 x 1.25
37	V85318400	1	Bracket
38	V85307300	6	Screw
39	V85307200	9	Screw



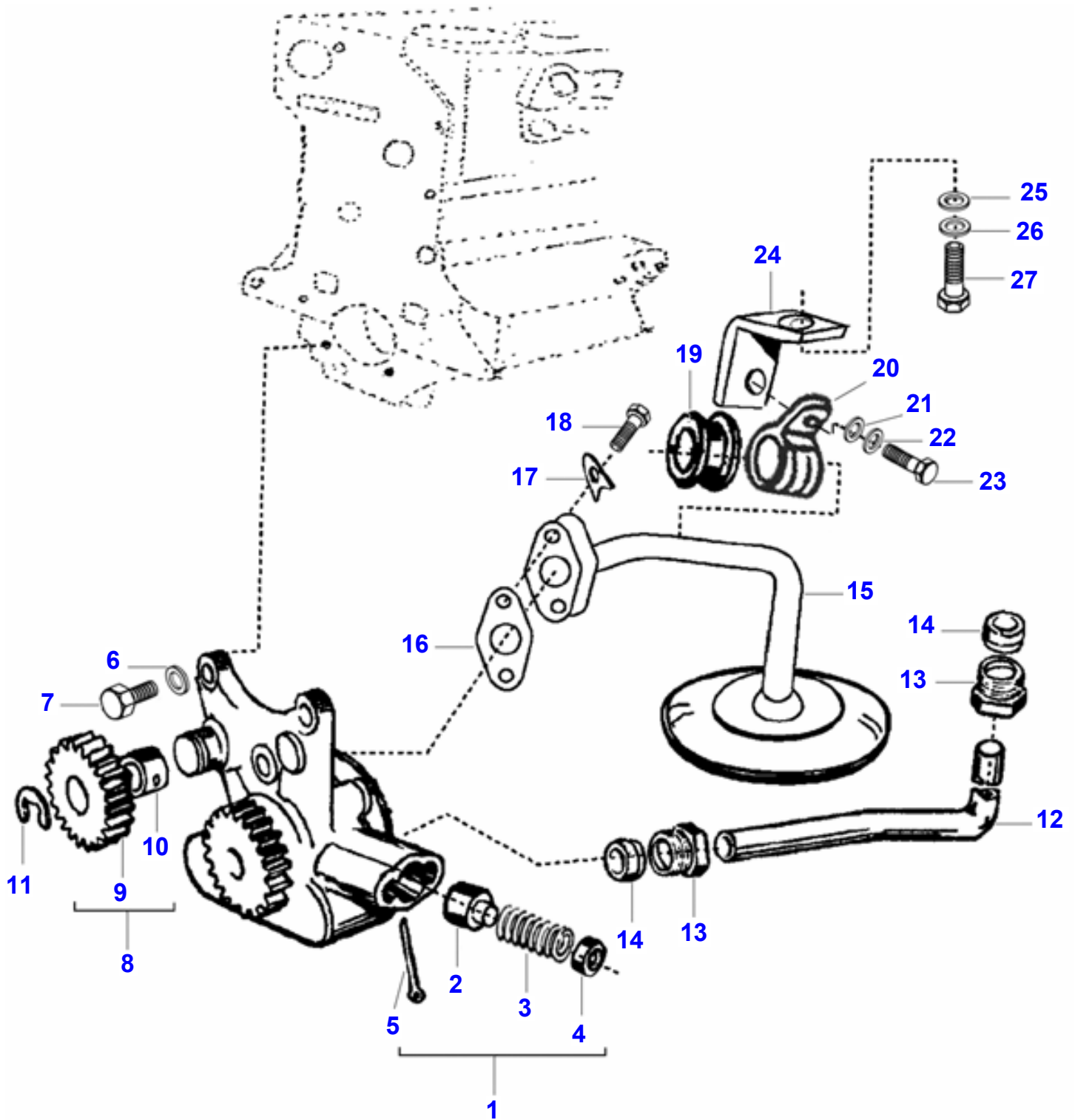
20 - VALVE MECHANISM

Item	Part Number	Qty	Description
1	V85309800	1	Cover
2	V84548000	1	Gasket
3	V84548100	1	Bearing
4	V85313900	2	Washer
5	V85320500	2	Bolt m8 x 1.25 M8 x 1.25
6	V85312700	12	Washer
7	V85317000	12	Screw
8	V85312700	2	Washer
9	V85320400	2	Screw
10	V85310000	1	Pin
11	V85313700	1	Flange
12	V84548200	1	Gear
13	V85313500	1	Shim
14	V85309100	1	Washer
15	V85316700	1	Screw
16	V84548300	1	Shaft
17	V84548400	1	Gear
18	V85312700	3	Washer
19	V85316600	3	Screw
20	V85312100	1	Screw
21	V85307600	1	Lock
22	V85319000	1	Cover
23	V84548500	1	Gasket
24	V85317200	2	Screw
25	V85320200	1	Screw
26	V85310700	3	Washer
27	V85312700	3	Washer
28	V85319600	3	Nut
29	V85312700	2	Washer
30	V85320100	2	Screw
31	V85318100	2	Washer
32	V85320600	2	Bolt m10 x 1.50 M10 x 1.50
33	V85308000	1	Gasket
34	V85318800	1	Flange
35	V85312600	6	Washer
36	V85320800	6	Bolt m6 x 1 M6 x 1
37	V84548600	1	Seal
38	V85312700	3	Washer
39	V85320300	3	Screw
40	V85312600	8	Washer
41	V85320000	9	Screw
42	V85321900	1	Stud bolt
43	V85306500	1	Pin



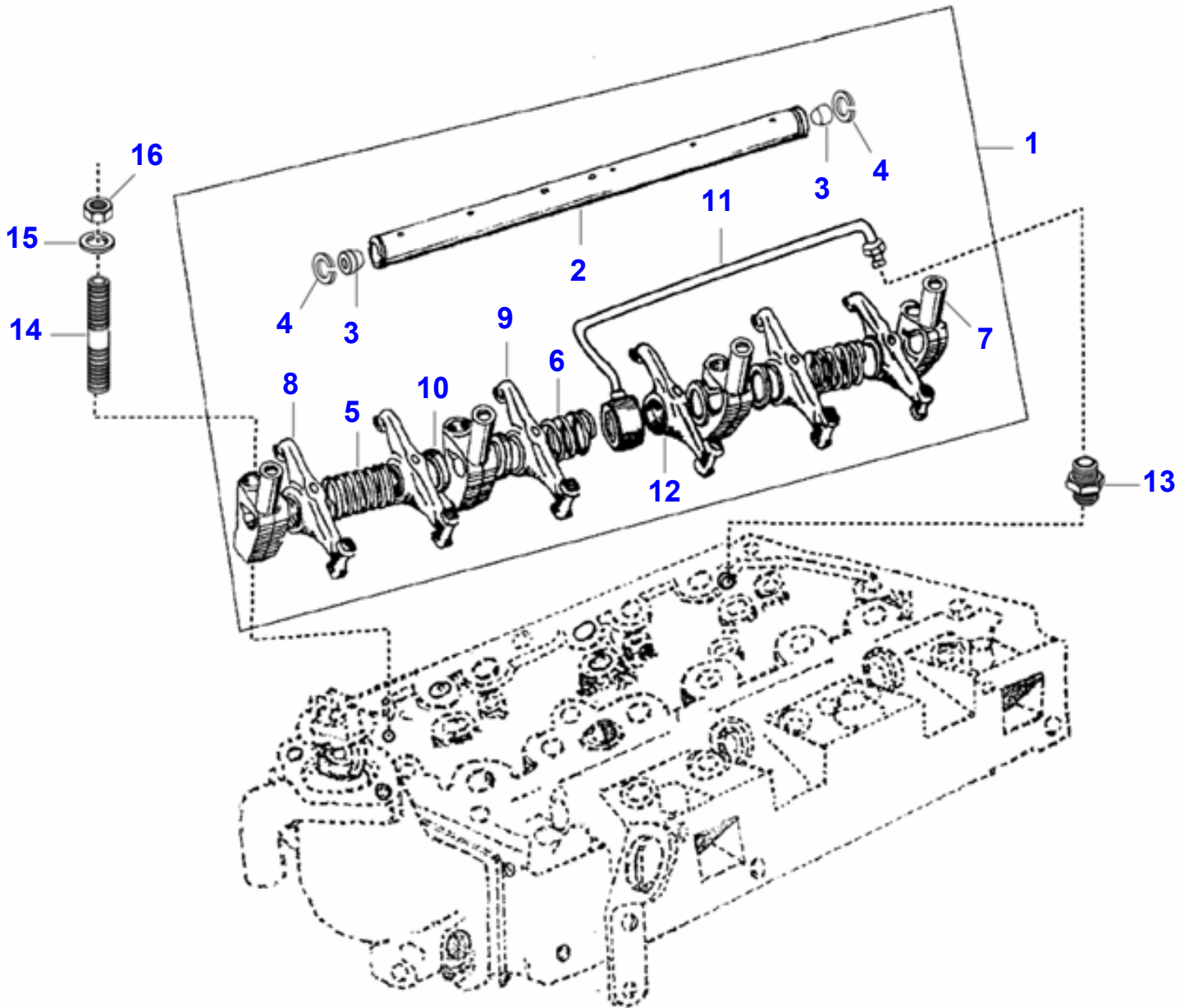
20 - CRANKSHAFT MECHANISM

Item	Part Number	Qty	Description
1	V84545800	1	Crankshaft
2	V85309400	3	Counterweight
3	V85309500	4	Screw
4	V85309600	2	Lock ring
5	V85309700	2	Cleat
6	V84546000	1	Key
7	V84546100	1	Gear crankshaft
8	V85322300	1	Washer
9	V84546200	1	Pulley
10	V85314900	1	Washer
11	V85320900	1	Screw
12	V84546300	1	Big end bearing std
	V84546400	1	Big end bearing 010 0,010"
	V84546500	1	Big end bearing 020 0,020"
	V84546600	1	Big end bearing 030 0,030"
13	V84546700	2	Shim std
	V84546800	2	Shim .007 0,007"
14	V84546700	2	Shim std STD, Alt. 84546700 (kit)
	V84546800	2	Shim .007 0,007", Alt. 84546800 (kit)
15	V84546900	3	Kit conrod
16	V84547000	3	Bush Alt. 85123800
17	V84547100	6	Bolt
18	V84547200	6	Nut
19	V84547300	6	Bush assy std Std
	V84547400	6	Bush assy 010 mm 0,010"
	V84547500	6	Bush assy 020 mm 0,020"
	V84547600	6	Bush assy 030 mm 0,030"
20	V85306600	3	Kit piston
21	V84547700	3	Kit piston
22	V84547800	3	Ring
23	V84550700	2	Circlip



20 - GEAR HOUSING

Item	Part Number	Qty	Description
1	V84547900	1	Parts pack
2	V85314700	1	Shaft
3	V85314400	1	Spring
4	V85315000	1	Shim
5	V85311600	1	Cotter pin
6	V85312700	3	Washer
7	V85316600	3	Screw M8 x 1.25
8	V85308700	1	Kit gear
9	V85314300	1	Gear
10	V85310600	1	Bushing
11	V85308800	1	Lock ring
12	V85315300	1	Pipe
13	V85319700	2	Adapter
14	V85311300	2	Connection
15	V85318900	1	Pipe
16	V85311200	1	Gasket
17	V85313300	2	Washer
18	V85320100	2	Screw
19	V85315200	1	Bushing
20	V85315600	1	Clamp
21	V85312300	1	Washer
22	V85312600	1	Washer
23	V85320800	1	Bolt m6 x 1 M6 x 1
24	V85318600	1	Bracket
25	V85312300	1	Washer
26	V85312600	1	Washer
27	V85320800	1	Bolt m6 x 1 M6 x 1



Thank you so much for reading.
Please click the “Buy Now!”
button below to download the
complete manual.



After you pay.

You can download the most
perfect and complete manual in
the world immediately.

Our support email:

ebooklibonline@outlook.com