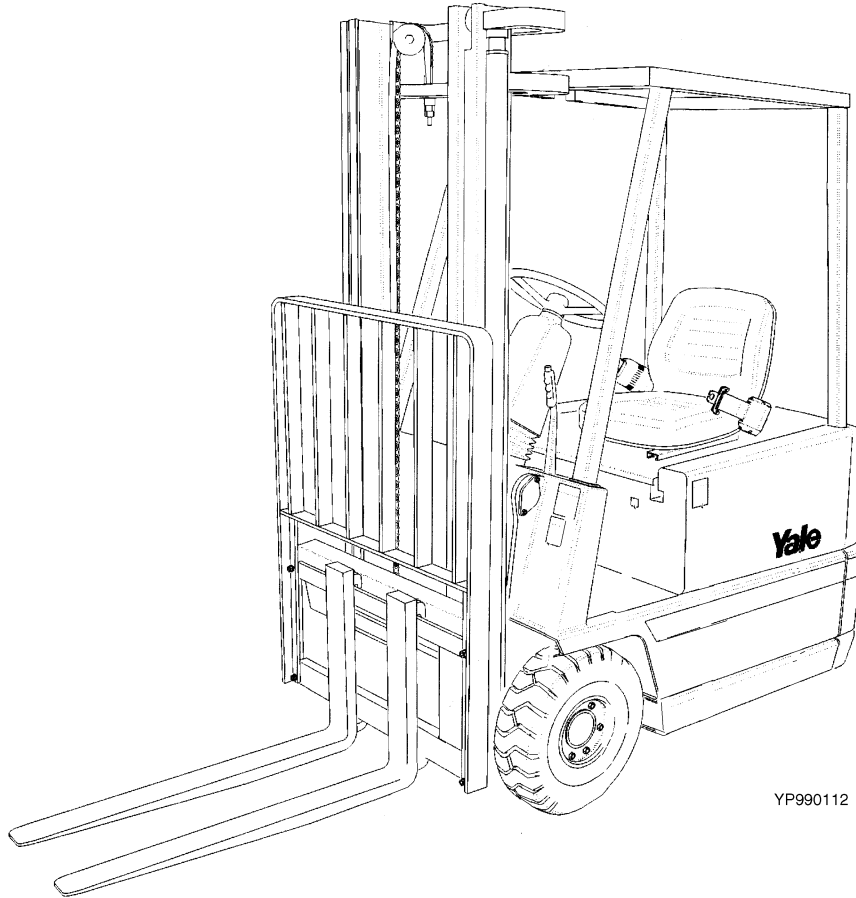


ERP10-15RCF

(A888)



YP990112

| | |
|-----------|--|
| 1 | GENERAL TRUCK |
| 2 | ELECTRICAL SYSTEM |
| 3 | DRIVE UNIT |
| 4 | STEERING SYSTEM |
| 5 | BRAKE SYSTEM |
| 6 | HYDRAULIC SYSTEM |
| 7 | MAST-TWO STAGE LIMITED FREE-LIFT |
| 8 | MAST-THREE STAGE FULL FREE-LIFT |
| 9 | MAST-TWO STAGE FULL FREE-LIFT |
| 10 | FORKS, LOAD BACKREST, AND MAST INSTALLATION |
| 11 | NUMERICAL INDEX |

ALPHABETICAL INDEX

| DESCRIPTION | PAGE NO. |
|---|----------|
| A | |
| ABBREVIATIONS QUICK REFERENCE SHEET | v |
| ACCELERATOR | 5.14 |
| ACCELERATOR PEDAL..... | 5.16 |
| ALPHABETICAL INDEX..... | i |
| B | |
| BRAKE ASSEMBLY | |
| ⇒S/N A888A02460A | 5.2 |
| S/N A888A02461A⇒ | 5.6 |
| BRAKE LINES..... | 5.4 |
| C | |
| CARRIAGE | |
| THREE STAGE FULL FREE-LIFT | 8.18 |
| TWO STAGE FULL FREE-LIFT | 9.16 |
| TWO STAGE LIMITED FREE-LIFT..... | 7.10 |
| CONTACTOR | |
| BY-PASS | |
| ⇒S/N A888A-1964Y | 2.18 |
| FORWARD/REVERSE | |
| ⇒S/N A888A-1964Y | 2.14 |
| REGENERATIVE BRAKING | |
| ⇒S/N A888A-1964Y | 2.20 |
| CONTACTOR PANEL | |
| ⇒S/N A888A-1964Y | 2.12 |
| CONTROL VALVE | 6.10 |
| CONTROL VALVE LEVER AND ATTACHING PARTS | 6.6 |
| D | |
| DRIVE TIRE AND WHEEL | |
| STEERING..... | 3.12 |
| DRIVE UNIT AND MOTOR ASSEMBLY..... | 3.2 |
| E | |
| ELECTRICAL SYSTEM | |
| ⇒S/N A888A-1964Y | 2.2 |
| S/N A888A-1965Y⇒..... | 2.4 |
| F | |
| FORK..... | 10.2 |
| FRAME AND COUNTERWEIGHT | 1.4 |
| FREE-LIFT | |
| 1280 MM | |
| TWO STAGE FULL FREE-LIFT | 9.8 |
| THREE STAGE FULL FREE-LIFT | 8.10 |
| FREE-LIFT CYLINDER | |

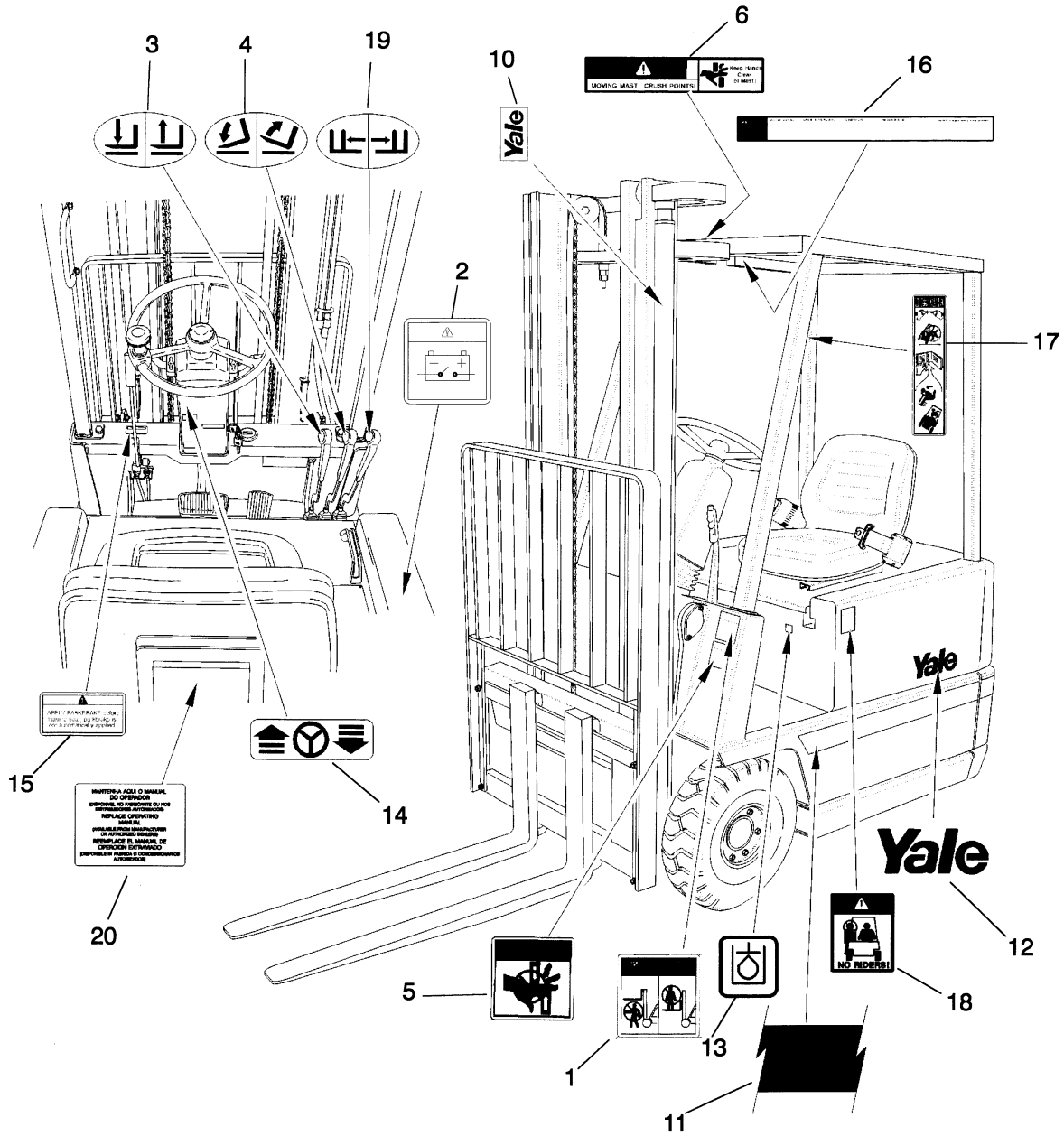
| DESCRIPTION | PAGE NO. |
|---|----------|
| F (continued) | |
| THREE STAGE FULL FREE-LIFT | 8.16 |
| TWO STAGE FULL FREE-LIFT | 9.14 |
| H | |
| HEADER HOSE | |
| THREE STAGE FULL FREE-LIFT | 8.22 |
| TWO STAGE FULL FREE-LIFT | 9.20 |
| TWO STAGE LIMITED FREE-LIFT | 7.14 |
| HOW TO FIND THE DESIRED PART NUMBER | vii |
| HOW TO USE THE ILLUSTRATED PARTS MANUAL | vii |
| HUB | 5.12 |
| HYDRAULIC MOTOR | |
| ⇒S/N A888A-1964Y | 6.14 |
| S/N A888A-1965Y⇒ | 6.16 |
| HYDRAULIC PUMP | |
| SHEET 1 OF 2 | 6.18 |
| SHEET 2 OF 2 | 6.20 |
| HYDRAULIC SYSTEM | 6.2 |
| I | |
| IDENTIFICATION OF ATTACHMENT AND SIDE-SHIFT CARRIAGE SERIAL NUMBERS | x |
| IDENTIFICATION OF MAST SERIAL NUMBER | ix |
| IDENTIFICATION OF TRUCK SERIAL NUMBER | viii |
| INNER MAST | |
| 1280 MM | |
| TWO STAGE FULL FREE-LIFT | 9.4 |
| THREE STAGE FULL FREE-LIFT | 8.6 |
| TWO STAGE LIMITED FREE-LIFT | 7.4 |
| INTEGRAL SIDE-SHIFT ASSEMBLY | |
| THREE STAGE FULL FREE-LIFT | 8.20 |
| INTEGRAL SIDE-SHIFT CARRIAGE | |
| TWO STAGE FULL FREE-LIFT | 9.18 |
| TWO STAGE LIMITED FREE-LIFT | 7.12 |
| INTERMEDIATE MAST | |
| THREE STAGE FULL FREE-LIFT | 8.4 |
| L | |
| LABELS | 1.2 |
| LIFT | |
| TWO STAGE LIMITED FREE-LIFT | 7.6 |
| LIFT CYLINDER | |
| TWO STAGE LIMITED FREE-LIFT | 7.8 |
| LINE CONTACTOR | |
| ⇒S/N A888A-1964Y | 2.16 |
| LOAD BACKREST | |
| INTEGRAL SIDE-SHIFT | 10.10 |
| LOAD BACKREST EXTENSION | 10.4 |

| DESCRIPTION | PAGE NO. |
|----------------------------------|----------|
| M | |
| MAIN CYLINDER | |
| LEFT HAND | |
| TWO STAGE FULL FREE-LIFT | 9.10 |
| RIGHT HAND | |
| TWO STAGE FULL FREE-LIFT | 9.12 |
| THREE STAGE FULL FREE-LIFT | 8.14 |
| MAIN LIFT | |
| 1280 MM | |
| TWO STAGE FULL FREE-LIFT | 9.6 |
| THREE STAGE FULL FREE-LIFT | 8.8 |
| MASTER CYLINDER | 5.8 |
| MASTER DRIVE UNIT | |
| KORDEL | |
| OPTIONAL | 3.8 |
| ZF..... | 3.4 |
| N | |
| NON-SUSPENSION SEAT | 1.8 |
| O | |
| OUTER MAST | |
| 1280 MM | |
| TWO STAGE FULL FREE-LIFT | 9.2 |
| THREE STAGE FULL FREE-LIFT | 8.2 |
| TWO STAGE LIMITED FREE-LIFT..... | 7.2 |
| OVERHEAD GUARD..... | 1.14 |
| P | |
| PARK BRAKE | 5.10 |
| S | |
| SEMI-SUSPENSION SEAT | 1.10 |
| WITH ARM REST | 1.12 |
| SHIFT LEVER | 4.4 |
| SIDE-SHIFT CARRIAGE | 10.6 |
| SIDE-SHIFT CYLINDER | 10.8 |
| STEERING COLUMN..... | 4.2 |
| STEERING HYDRAULIC..... | 4.6 |
| STEERING PUMP | 4.8 |
| STROBE LIGHT | 1.16 |
| T | |
| TILT CYLINDER | |
| ⇒S/N A888A-1964Y | 6.22 |
| S/N A888A-1965Y⇒..... | 6.24 |
| TRACTION MOTOR | |
| ⇒S/N A888A-1964Y | 3.14 |
| S/N A888A-1965Y⇒..... | 3.16 |

| DESCRIPTION | PAGE NO. |
|------------------------|----------|
| W | |
| WIRE HARNESS | |
| MAIN | |
| S/N A888A-1965Y⇒ | 2.10 |
| ⇒S/N A888A-1965Y | 2.8 |

**SECTION 1
GENERAL TRUCK**

| DESCRIPTION | PAGE |
|-------------------------------|-------------|
| FRAME AND COUNTERWEIGHT | 1.4 |
| LABELS | 1.2 |
| NON-SUSPENSION SEAT | 1.8 |
| OVERHEAD GUARD | 1.14 |
| SEMI-SUSPENSION SEAT | 1.10 |
| WITH ARM REST | 1.12 |
| STROBE LIGHT | 1.16 |



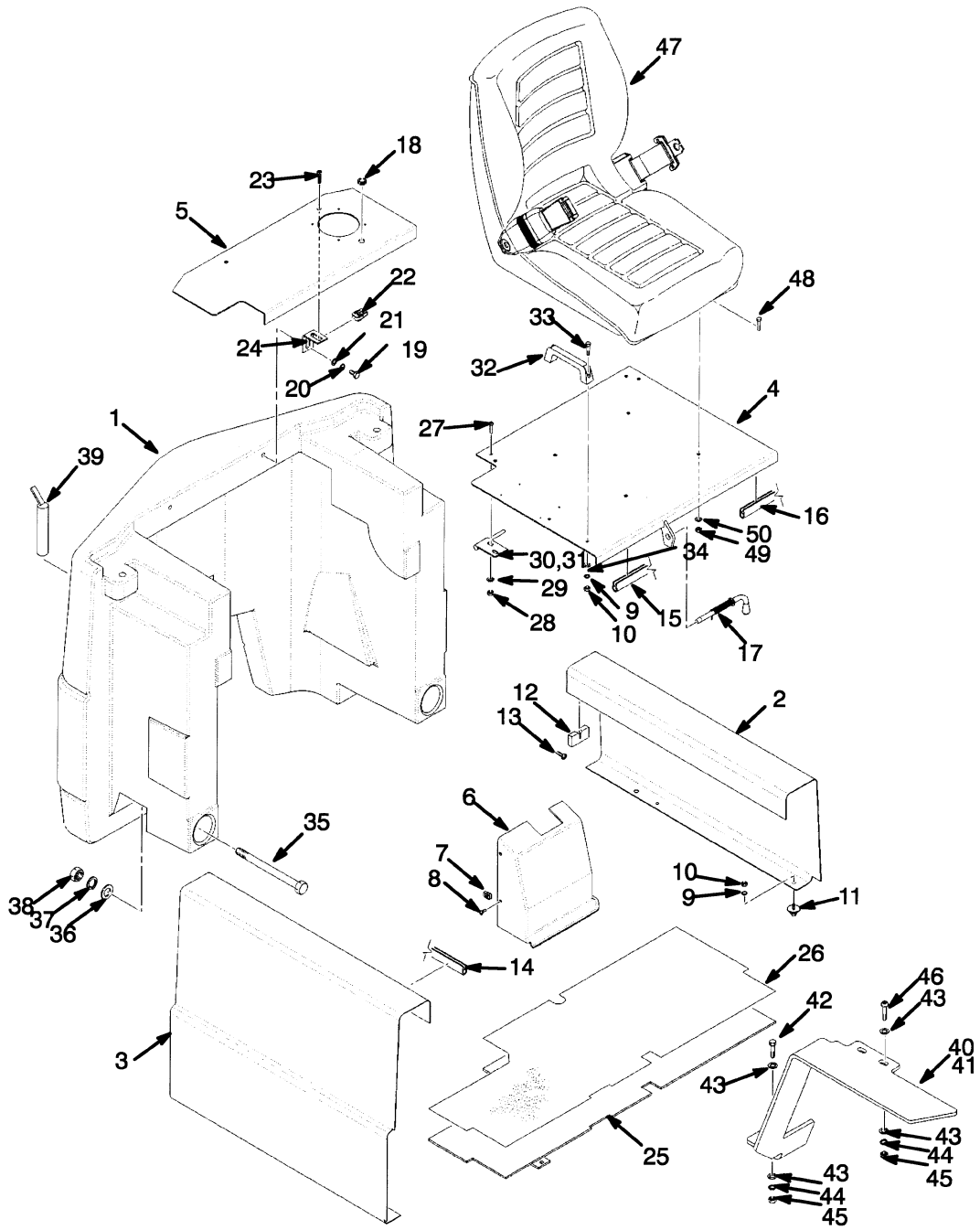
YP260000

| ITEM | PART NO. | DESCRIPTION | QTY |
|------|--------------------|---|-----|
| 1 | 505972545 | Label (Mast Warning) | 2 |
| 2 | 580031629 | Label (Battery Disconnect) | 1 |
| 3 | 519798601 | Label (Hoist Handle) | 1 |
| 4 | 519798602 | Label (Tilt Handle) | 1 |
| 5 | 505974557 | Label (Pinch Point) | 2 |
| 6 | 505972545 | Label (Mast Warning) | 1 |
| 7 | 580008064 | Cover | 1 |
| 8 | 504231220 | Rivet | 4 |
| 9 | a | Nameplate | 1 |
| 10 | 502157207 | Label (Yale) | 2 |
| 11 | 524142943 | Strip (RH) | 1 |
| 11 | 524142944 | Strip (LH) | 1 |
| 11 | 524142945 | Strip (Rear) | 1 |
| 12 | 258193900 | Label (Yale) | 2 |
| 13 | 520045119 | Label (Hydraulic Oil Fill) | 1 |
| 14 | 504955200 | Label (Tilt Column) | 1 |
| 15 | 518806691 | Label (Park Brake Warning) | 1 |
| 16 | 518805660 | Label (Operator Warning) | 1 |
| 17 | 505973524 | Label (Operator Restraint) | 2 |
| 18 | 505972566 | Label (No Riders) | 2 |
| 19 | 519798604 | Label (Auxiliary Function - Side-Shift) | 1 |
| 20 | 504231235 | Label (Operator Manual) (UK) | 1 |

FOOTNOTES:

a Contact Dealer for Parts

FRAME AND COUNTERWEIGHT



YP260285



FRAME AND COUNTERWEIGHT

| ITEM | PART NO. | DESCRIPTION | QTY |
|------|-------------|----------------------------------|-----|
| 1 | 524140038 | Counterweight (ERP 15 RCF) | 1 |
| 1 | 524140039 | Counterweight (ERP 12 RCF) | 1 |
| 1 | 524140040 | Counterweight (EPR 10 RCF) | 1 |
| 2 | 504241309 | Cover (LH) | 1 |
| 3 | 504241310 | Cover (RH) | 1 |
| 4 | a 580014511 | Hood | 1 |
| 4 | b 524148943 | Hood | 1 |
| 5 | a 580014512 | Hood (Rear) | 1 |
| 5 | b 524148944 | Hood (Rear) | 1 |
| 6 | 580014506 | Cover (Three Function) | 1 |
| 6 | 580023107 | Cover (Four Function) | 1 |
| 7 | 504225257 | Nut | 3 |
| 8 | 449007018 | Screw | 3 |
| 9 | 449022018 | Lockwasher | 6 |
| 10 | 449015002 | Nut | 6 |
| 11 | 504238222 | Buffer | 4 |
| 12 | 504238275 | Moulding | 4 |
| 13 | 504238225 | Screw | 8 |
| 14 | 504238295 | Edge Trim | 2 |
| 15 | 504238214 | Edge Trim | 1 |
| 16 | 504238250 | Edge Trim | 1 |
| 17 | 504238213 | Bolt | 1 |
| 18 | 900003245 | Grommet | 1 |
| 19 | 580017694 | Screw | 2 |
| 20 | 502566904 | Washer | 4 |
| 21 | 449022013 | Lockwasher | 4 |
| 22 | 504236222 | Nut | 2 |
| 23 | 449001016 | Capscrew | 2 |
| 24 | 580015118 | Bracket | 2 |
| 25 | 580014508 | Floorplate | 1 |
| 26 | 580015033 | Floormat | 1 |
| 27 | 932729903 | Capscrew | 4 |
| 28 | 504229298 | Nut | 4 |
| 29 | 504226242 | Washer | 4 |
| 30 | 580014509 | Hinge (LH) | 1 |
| 31 | 580014510 | Hinge (RH) | 1 |
| 32 | 504235245 | Handle | 2 |
| 33 | 449001170 | Capscrew | 2 |
| 34 | 449021003 | Washer | 2 |
| 35 | 931009924 | Capscrew | 2 |
| 36 | 504062730 | Washer | 2 |
| 37 | 955400910 | Lockwasher | 2 |
| 38 | 937300900 | Nut | 2 |
| 39 | 504062481 | Tow Pin | 1 |
| 40 | 580014513 | Fender (LH) | 1 |
| 41 | 580014514 | Fender (RH) | 1 |
| 42 | 449001134 | Capscrew | 2 |
| 43 | 504226242 | Washer | 12 |
| 44 | 449022016 | Lockwasher | 6 |
| 45 | 449015014 | Nut | 6 |

FRAME AND COUNTERWEIGHT

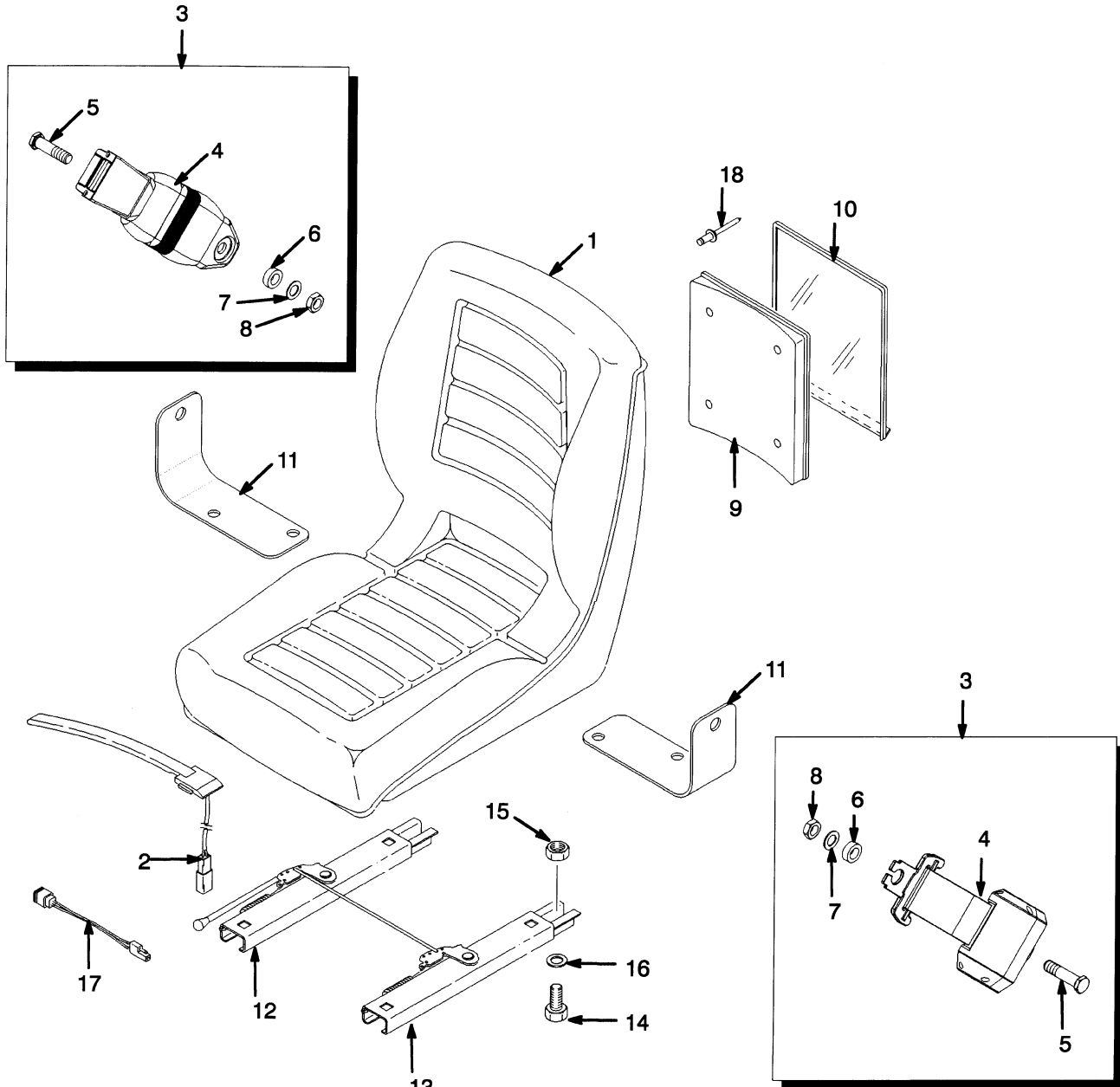
| ITEM | PART NO. | DESCRIPTION | QTY |
|------|-----------|---|-----|
| 46 | 580032373 | Capscrew..... | 4 |
| 47 | 580008424 | Non-Suspension Seat (☞ Page 1.8, ☞ Page 1.10) | 1 |
| 47 | 580017036 | Semi-Suspension Seat (☞ Page 1.10) | 1 |
| 48 | 449001013 | Capscrew..... | 4 |
| 49 | 504229298 | Nut..... | 4 |
| 50 | 504226242 | Washer | 4 |

FOOTNOTES:

a ⇒ S/N A888A-01964Y

b S/N A888A-01965Y ⇒

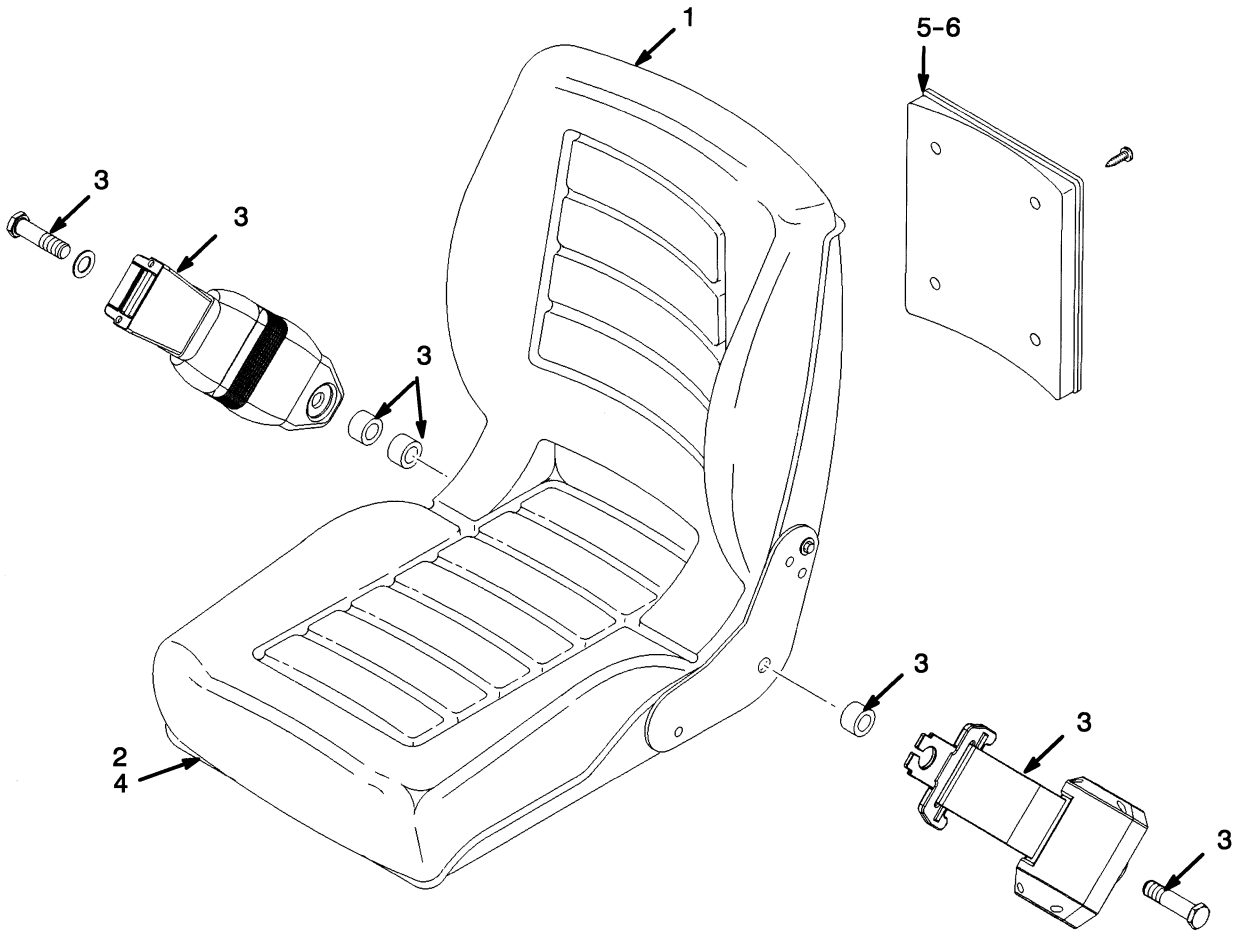
NON-SUSPENSION SEAT



YP260286

| ITEM | PART NO. | DESCRIPTION | QTY |
|------|-----------|-------------------------------|-----|
| | 580008424 | Non-Suspension Seat..... | 1 |
| 1 | 504232248 | Seat..... | 1 |
| 2 | 504305734 | Switch Assembly | 1 |
| 3 | 580010327 | Seat Belt Kit | 1 |
| 4 | | Seat Belt | 1 |
| 5 | | Screw | 2 |
| 6 | | Washer..... | 2 |
| 7 | | Washer..... | 2 |
| 8 | | Nut | 2 |
| 9 | 519996801 | Base (Information Case) | 1 |
| 10 | 519996803 | Cover (Information Case)..... | 1 |
| 11 | 580014487 | Bracket | 2 |
| 12 | 580014485 | Seat Rail..... | 1 |
| 13 | 580014486 | Seat Rail..... | 1 |
| 14 | 449001013 | Capscrew..... | 4 |
| 15 | 504229298 | Nut..... | 4 |
| 16 | 504226242 | Washer | 4 |
| 17 | 580008425 | Jumper..... | 1 |
| 18 | | Rivet | 4 |

SEMI-SUSPENSION SEAT



YP260287

Thank you so much for reading.
Please click the “Buy Now!”
button below to download the
complete manual.



After you pay.

You can download the most
perfect and complete manual in
the world immediately.

Our support email:

ebooklibonline@outlook.com