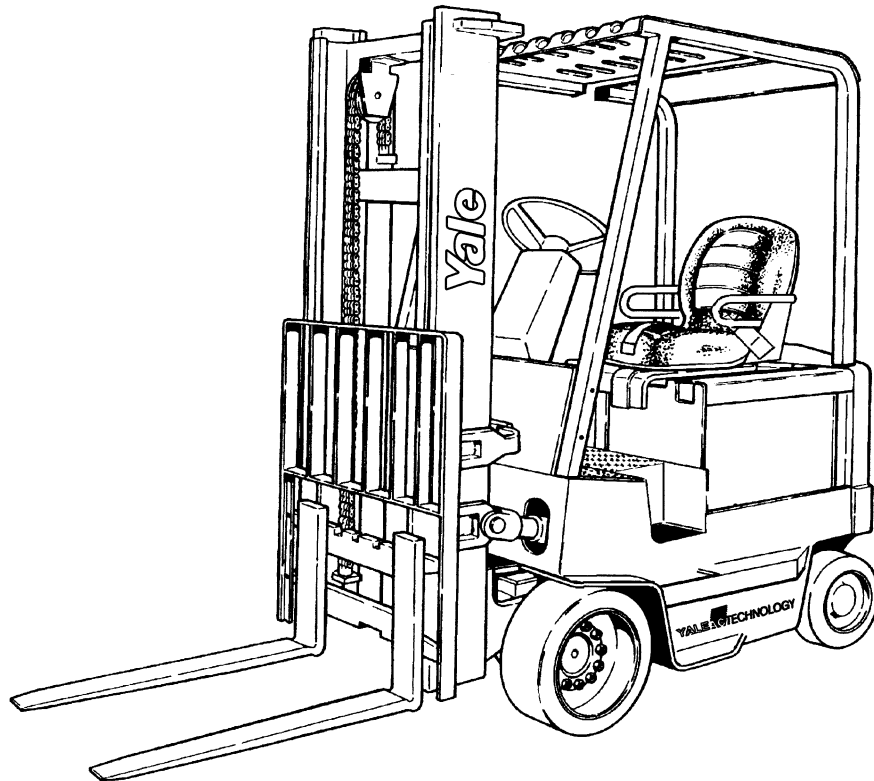


ERC35HG, ERC40HG, ERC45HG, ERC55HG

(B839)

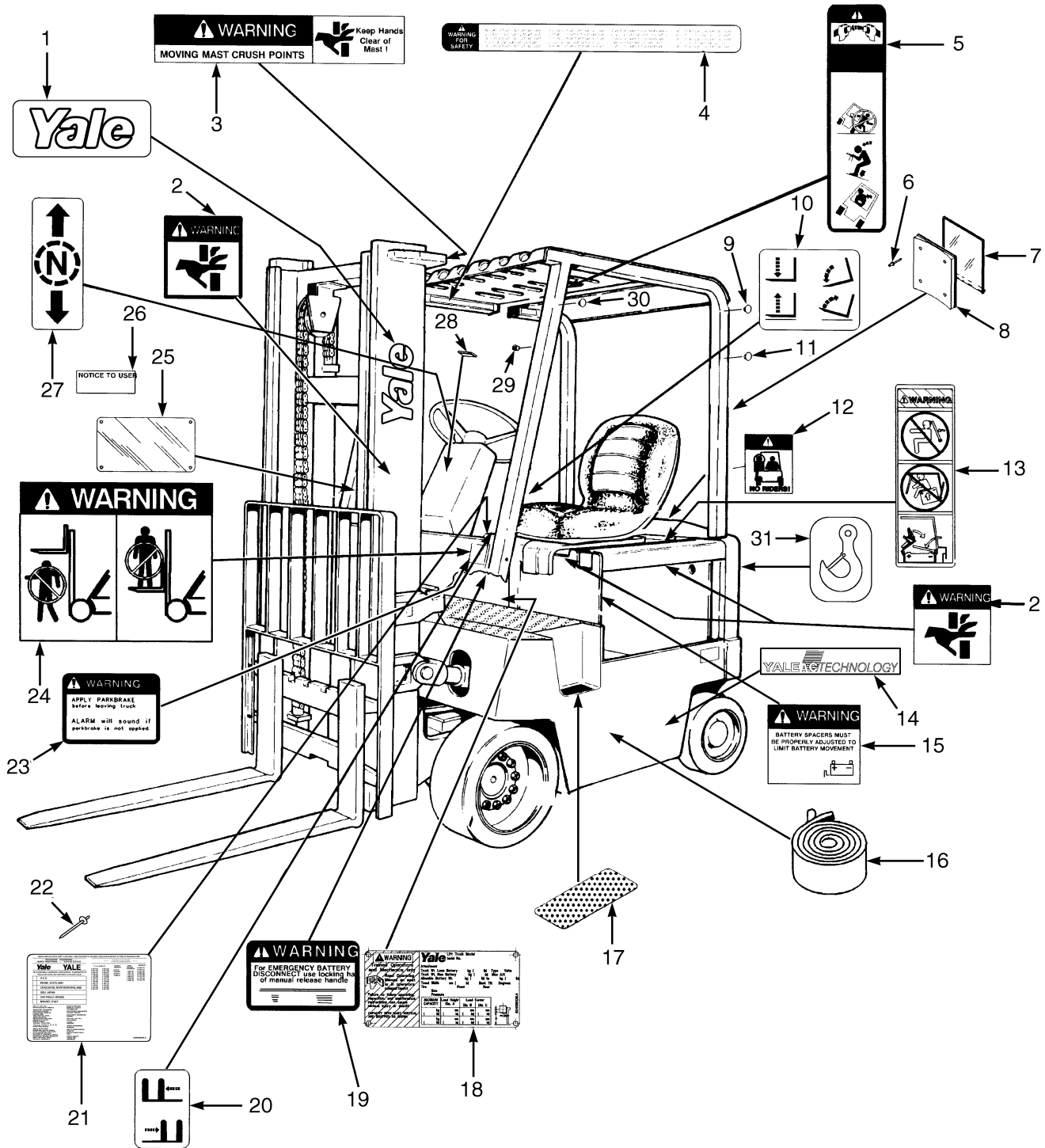


1	GENERAL TRUCK	
2	ELECTRICAL SYSTEM	
3	DRIVE UNIT	
4	STEERING SYSTEM	
5	BRAKE SYSTEM	
6	HYDRAULIC SYSTEM	
7	MAST-TWO STAGE LIMITED FREE-LIFT	
8	MAST-THREE STAGE FULL FREE-LIFT	
9	MAST-TWO STAGE FULL FREE-LIFT	
10	HEADER HOSE GROUP	
11	FORKS, LOAD BACKREST, AND MAST INSTALLATION	
12	OPTIONS	
13	NUMERICAL INDEX	

**SECTION 1
GENERAL TRUCK**

DESCRIPTION	PAGE
BATTERY SPACER	1.20
COUNTERWEIGHT	1.4
FLOOR PLATES AND COVERS	1.8
FULL SUSPENSION SEAT	
SHEET 1 OF 2	1.14
SHEET 2 OF 2	1.16
HOOD	1.10
LABELS	1.2
NON SUSPENSION SEAT	1.12
OVERHEAD GUARD	
WITH CURVED LEG	1.6
WITH STRAIGHT LEG	1.18

LABELS

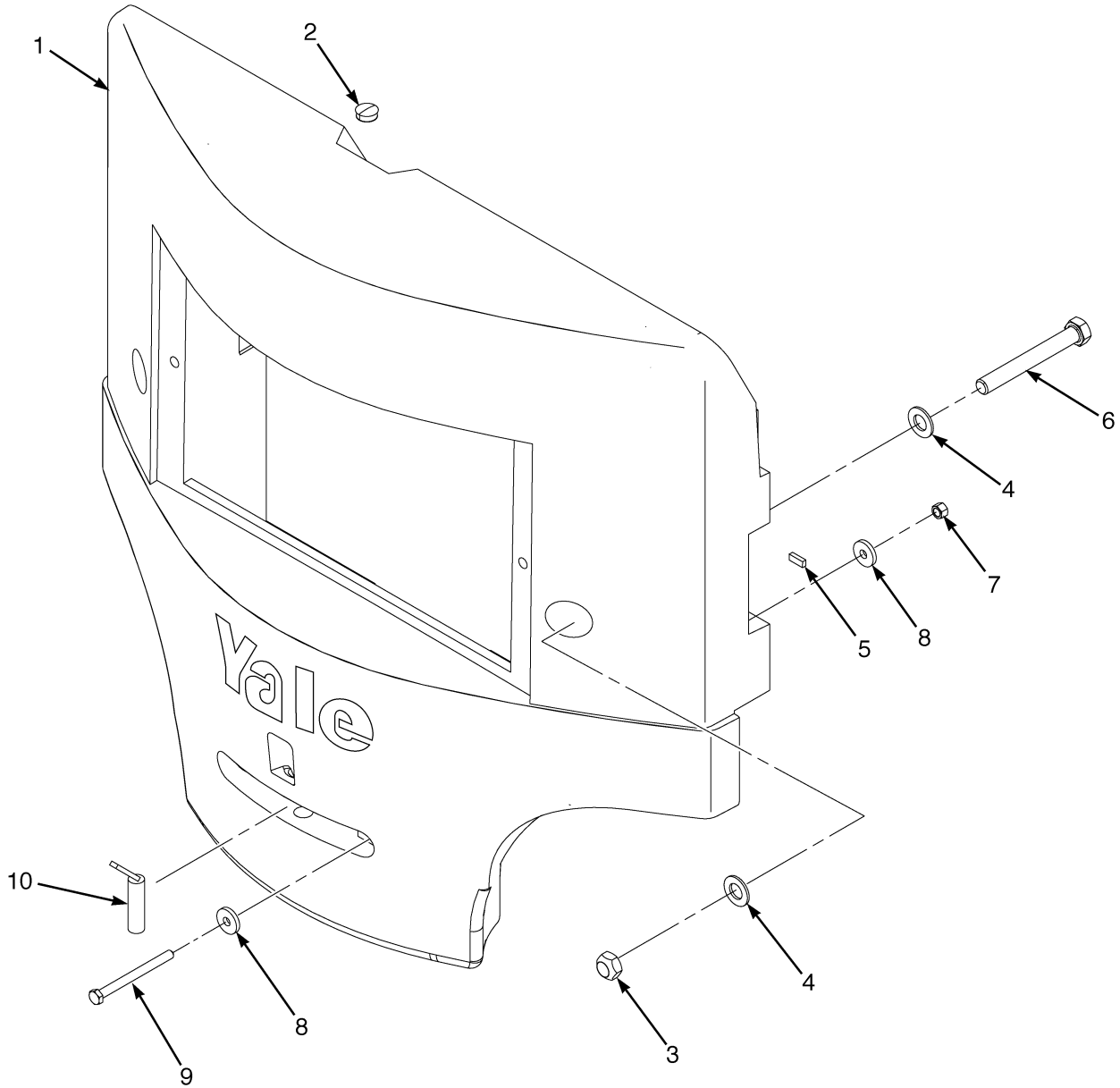


ITEM	PART NO.	DESCRIPTION	QTY
1	524208881	Label (Yale).....	2
2	505974557	Label (Pinch Point)	3
3	504238219	Label (Mast Warning)	1
4	518805660	Label (Operator Warning).....	1
5	505973524	Label (Operator Restraint).....	2
6	501904909	Rivet	4
7	519996803	Cover	1
8	519996801	Base	1
9	504225200	Plug	1
10	504231276	Label (Lift/Tilt).....	1
11	504241782	Plug	10
12	505972566	Label (No Riders)	2
13	580033435	Label (Battery Restraint)	2
14	524188468	Label (AC Technology)	1
15	518797644	Label (Battery Spacer)	1
16	504231231	Strip	AR
17	580011260	Pad	2
18	505890500	Label (Patents and Trademarks)	1
19	580033434	Label (Battery Disconnect).....	1
20	504231256	Label (Auxiliary Function - Side-Shift)	1
21	a	Capacity Plate	1
22	505976530	Rivet	4
23	519432675	Label (Parking Brake Warning).....	1
24	505972545	Label (Mast Warning)	2
25	580008064	Cover	1
26	580020205	Nameplate (Blank).....	1
27	504231275	Label (Forward/Reverse)	1
28	504225252	Plug	1
29	580023057	Plug	2
30	504241783	Plug	10
31	505974597	Label (Lifting Eye).....	1

FOOTNOTES:

a Contact Your Local Yale Dealer

COUNTERWEIGHT



YP260217



COUNTERWEIGHT

KEY:

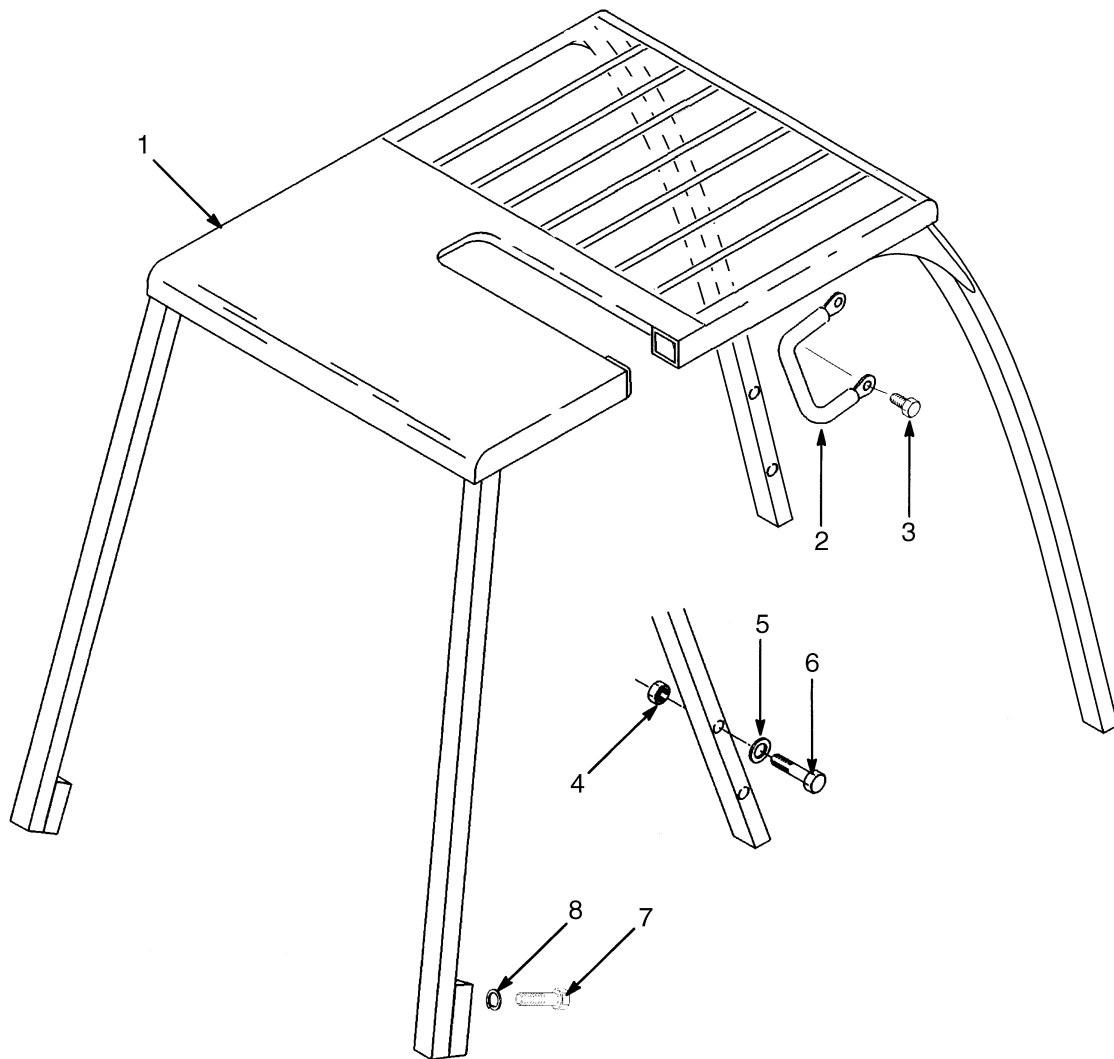
A: ERC35HG

B: ERC40-45HG (Long Wheel Base)

C: ERC55HG(Short Wheel Base)

ITEM	PART NO.	DESCRIPTION	QTY		
			A	B	C
1	524208970	Counterweight	1
1	524208971	Counterweight	1	..
1	524208972	Counterweight	1
2	520040856	Plug	1	1	1
3	580000236	Nut.....	2	2	2
4	061278500	Washer	4	4	4
5	504224270	Tape.....	AR	AR	AR
6	520053875	Capscrew.....	2	2	2
7	909882405	Locknut.....	2	2	2
8	505970501	Washer	4	4	4
9	449001313	Capscrew.....	2	2	2
10	504224291	Tow Pin.....	1	1	1

OVERHEAD GUARD (WITH CURVED LEG)





**OVERHEAD GUARD
(WITH CURVED LEG)**

KEY:

A: ERC35-40HG

B: ERC45-55HG

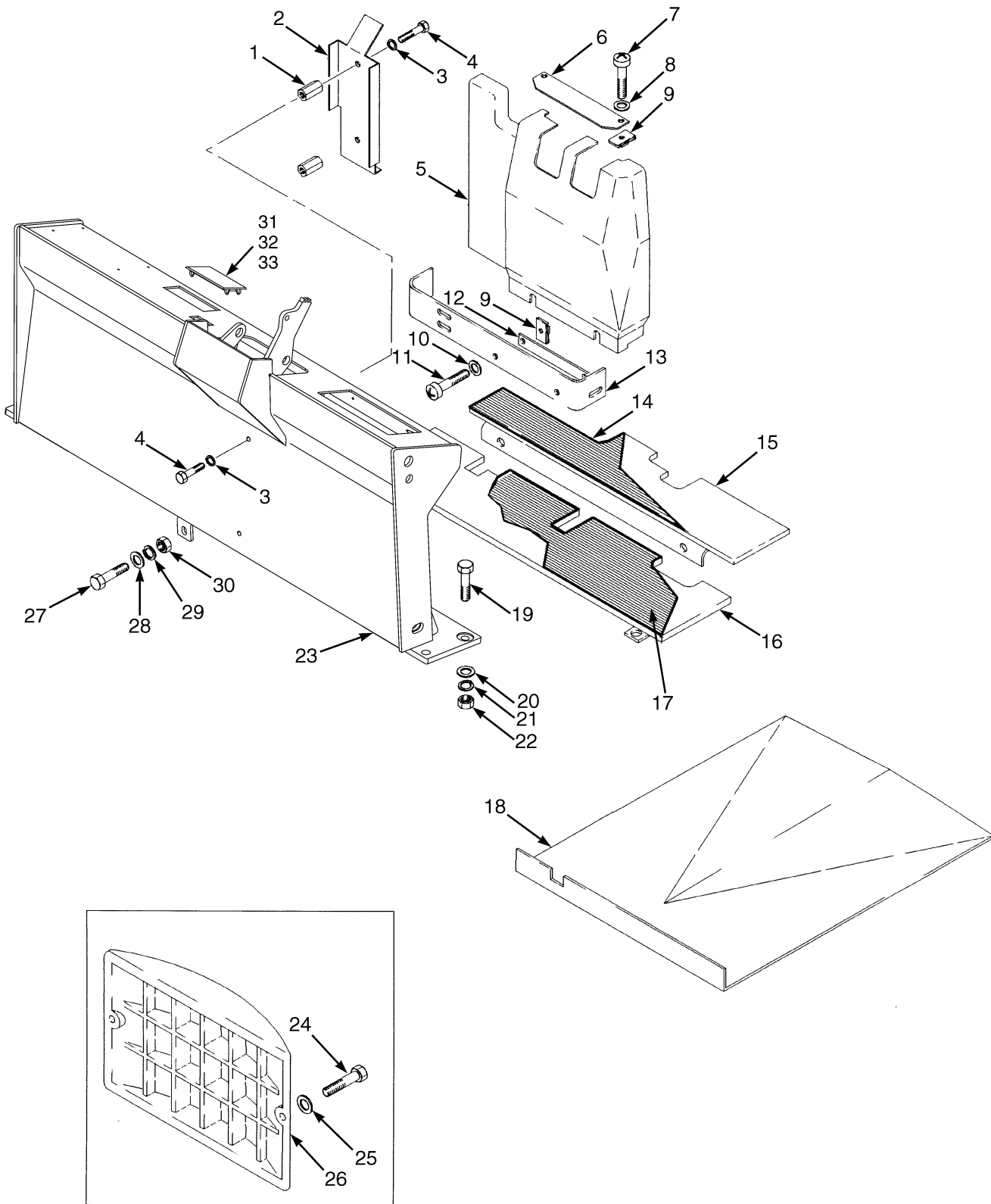
ITEM	PART NO.	DESCRIPTION	QTY	
			A	B
1	a 580053011	Overhead Guard.....	1	..
1	a 580053012	Overhead Guard.....	..	1
1	b 580053015	Overhead Guard.....	1	..
1	b 580053016	Overhead Guard.....	..	1
2	580056526	Handle (Grab).....	1	1
3	504060774	Screw.....	2	2
4	502097905	Nut.....	4	4
5	016110000	Washer.....	8	8
6	020788000	Capscrew.....	4	4
7	501725901	Capscrew.....	4	4
8	449022017	Lockwasher.....	4	4

FOOTNOTES:

a Grid Type

b PlateType

FLOOR PLATES AND COVERS



YP120189



FLOOR PLATES AND COVERS

KEY:

A: ERC35-40HG

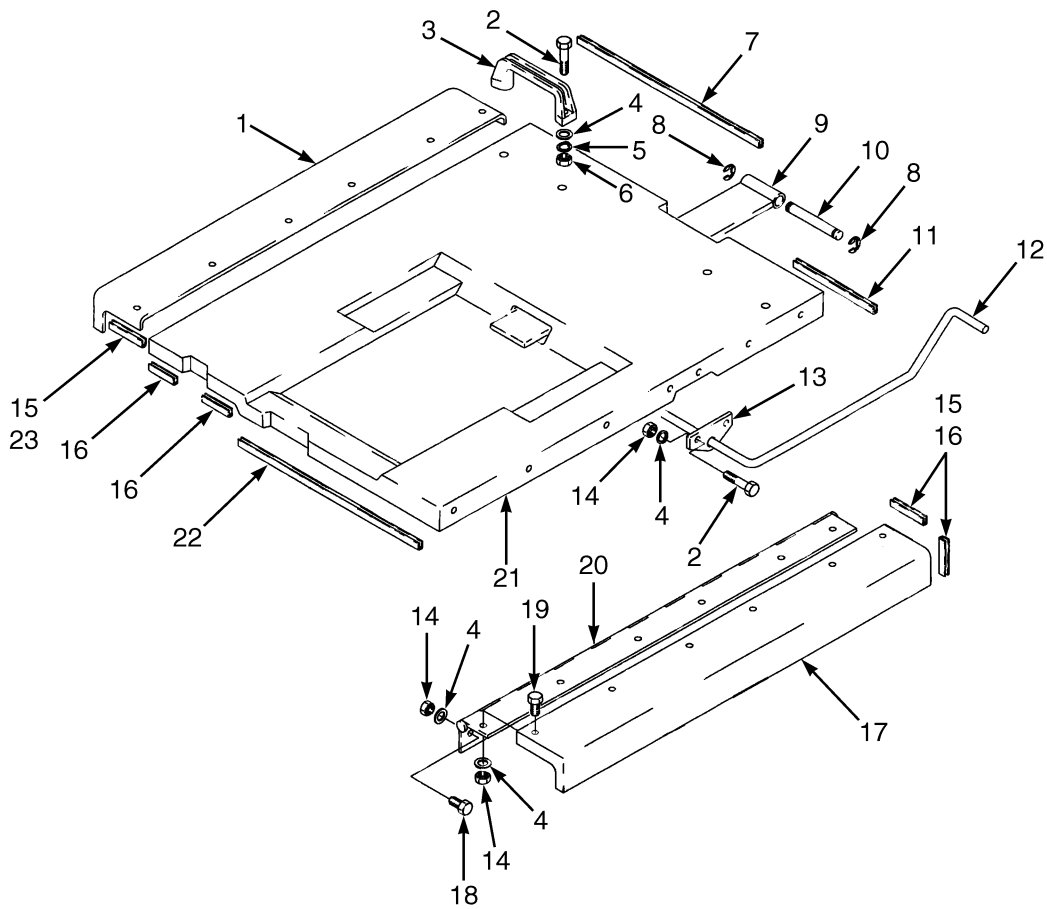
B: ERC45-55HG

ITEM	PART NO.	DESCRIPTION	QTY	
			A	B
1	504225221	Standoff	2	2
2	580053040	Cover	1	1
3	015026000	Lockwasher	4	4
4	520051894	Capscrew.....	4	4
5	520045703	Cover	1	1
6	520045707	Plate	1	1
7	449007048	Screw.....	6	6
8	449021003	Washer	6	6
9	505972586	Nut (Foldover).....	6	6
10	449021003	Washer	6	6
11	449007048	Screw.....	6	6
12	504225237	Plate	1	1
13	520045706	Plate	1	1
14	524138293	Floor mat (Rear)	1	1
15	524138290	Floor plate (Rear)	1	1
16	524138291	Floor plate (Front).....	1	1
17	524138294	Floor mat (Front).....	1	1
18	580011597	Cover	1	..
18	580011598	Cover	1
19	147246000	Capscrew.....	8	8
20	061278200	Washer	8	8
21	015026600	Lockwasher	8	8
22	520051895	Nut	8	8
23	524218560	Cowl.....	1	1
24	055486800	Capscrew.....	2	2
25	061278000	Washer	2	2
26	520045701	Cover	1	1
27	449001302	Capscrew.....	1	1
28	449021006	Washer	2	2
29	449022013	Lockwasher	1	1
30	449015044	Nut	1	1
31	520041892	Mounting Panel.....	1	1
32	520041817	Mounting Panel.....	1	1
33	520051863	Clip	1	1
	a 504225252	Plug	1	1

FOOTNOTES:

a Not Illustrated

HOOD



HP120820



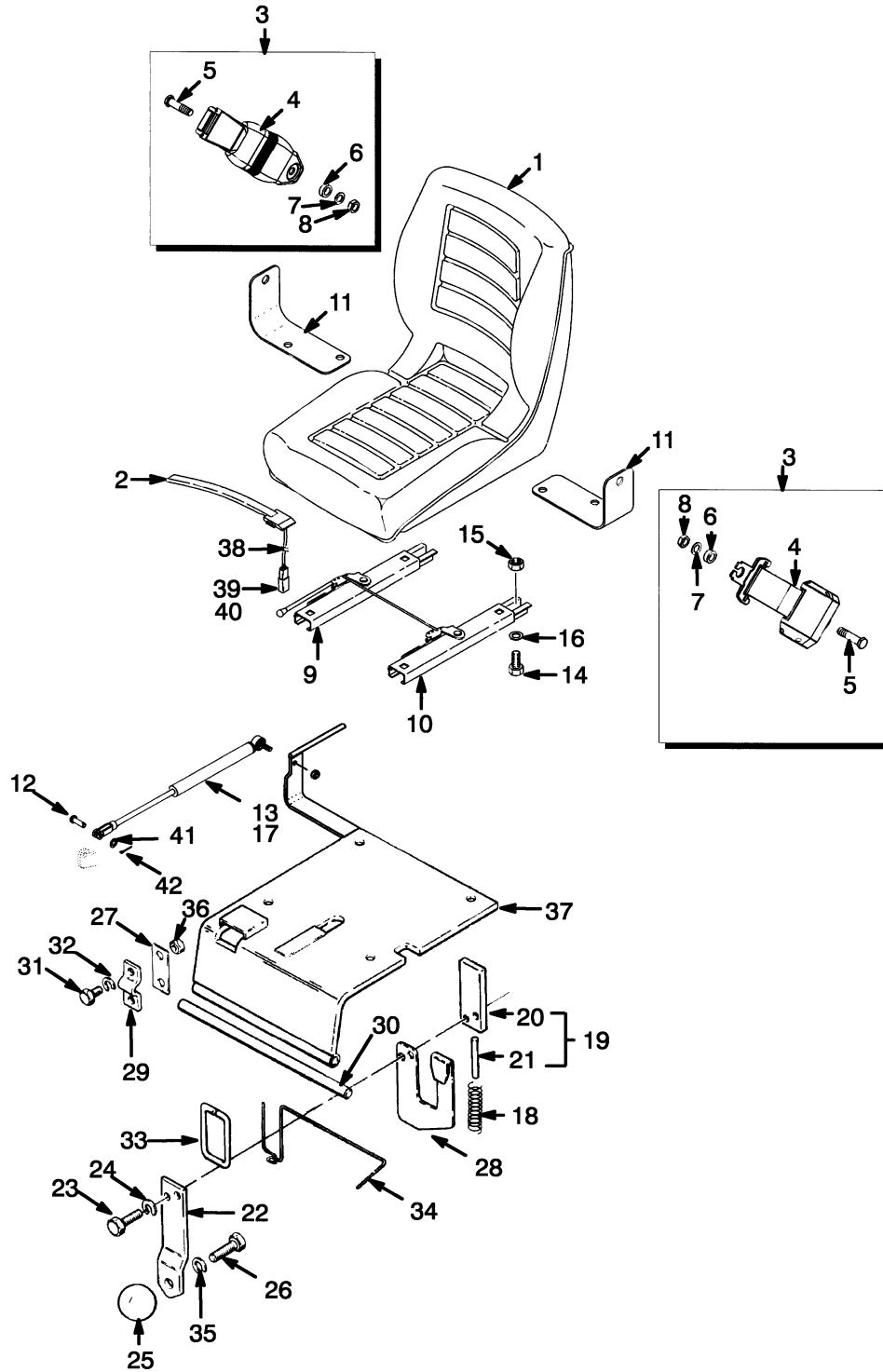
KEY:

A: ERC35-40HG

B: ERC45-55HG

ITEM	PART NO.	DESCRIPTION	QTY	
			A	B
1	524138235	Hood (Wing RH)	1	..
1	524138236	Hood (Wing RH)	1
2	449001121	Capscrew.....	8	8
3	504235245	Handle	2	2
4	449021003	Washer	30	30
5	449022018	Lockwasher	4	4
6	449015002	Nut	4	4
7	520045888	Trim.....	1	1
8	023338500	Retaining Ring.....	2	2
9	520045582	Plate	1	..
9	520045584	Plate	1
10	520045583	Pin	1	1
11	520045887	Trim.....	1	1
12	520045885	Hinge	1	1
13	520045886	Bracket	2	2
14	504231270	Nut.....	26	26
15	520045891	Adhesive.....	AR	AR
16	520045889	Trim.....	4	4
17	524138233	Hood (Wing LH).....	1	..
17	524138234	Hood (Wing LH).....	..	1
18	449001412	Capscrew.....	10	10
19	504235265	Capscrew.....	12	12
20	580010764	Hinge	2	..
20	580010765	Hinge	2
21	524138222	Hood.....	1	..
21	524138223	Hood.....	..	1
22	504235236	Trim.....	1	1
23	520045890	Trim.....	2	2

NON SUSPENSION SEAT



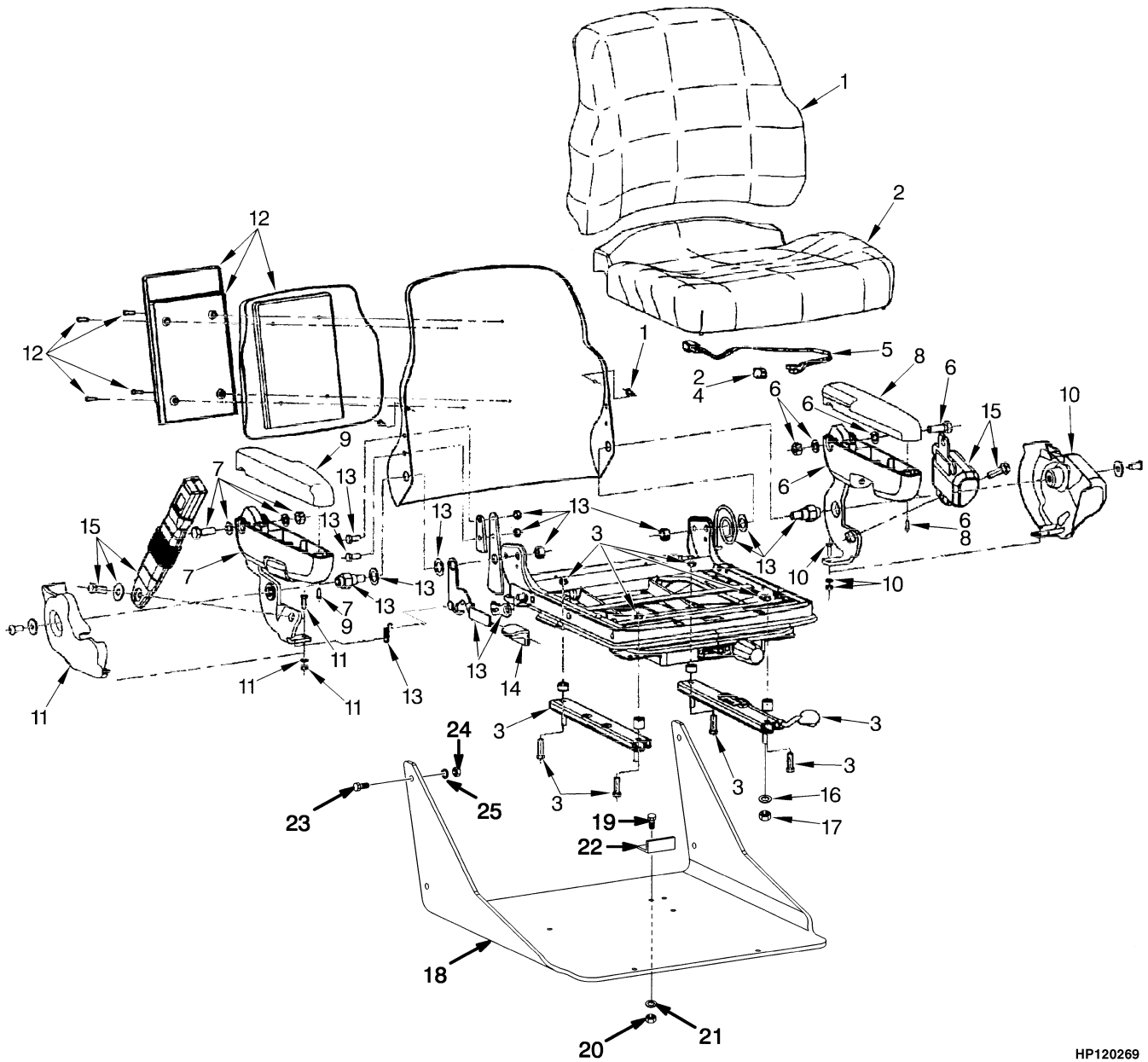
HP120187



NON SUSPENSION SEAT

ITEM	PART NO.	DESCRIPTION	QTY
	580008424	Non-Suspension Seat.....	1
1	504232248	Seat.....	1
2	504305734	Switch Assembly.....	1
3	580010327	Seat Belt Kit.....	1
4	Seat Belt.....	1
5	Screw.....	2
6	Washer.....	2
7	Washer.....	2
8	Nut.....	2
9	580014485	Seat Rail (RH).....	1
10	580014486	Seat Rail (LH).....	1
11	580014487	Bracket.....	1
12	504239227	Rod End Pin.....	1
13	501702904	Adhesive.....	AR
14	074259300	Capscrew.....	4
15	504227297	Nut.....	4
16	016103700	Washer.....	4
17	150112324	Gas Spring.....	1
18	504227219	Spring.....	1
19	580010668	Latch.....	1
20	580010657	Plate.....	1
21	504227270	Pin.....	1
22	504227213	Plate.....	1
23	449001114	Capscrew.....	2
24	449022018	Lockwasher.....	2
25	504224237	Knob.....	1
26	203078700	Capscrew.....	1
27	504223295	Spacer.....	AR
28	504223209	Spring Latch.....	1
29	504223299	Clamp.....	2
30	504223232	Bar.....	1
31	449001302	Capscrew.....	4
32	449022013	Lockwasher.....	4
33	504223250	Rod (Formed).....	1
34	504223296	Spring.....	1
35	015026400	Lockwasher.....	1
36	449015044	Nut.....	4
37	580036838	Plate.....	1
38	580060829	Wire Harness.....	1
39	505968533	Connector.....	1
40	505968540	Secondary Lock.....	1
40	505968514	Terminal (Pin).....	2
40	505064713	Terminal.....	2
41	016103700	Washer.....	1
42	015416200	Cotter Pin.....	1

FULL SUSPENSION SEAT (SHEET 1 OF 2)



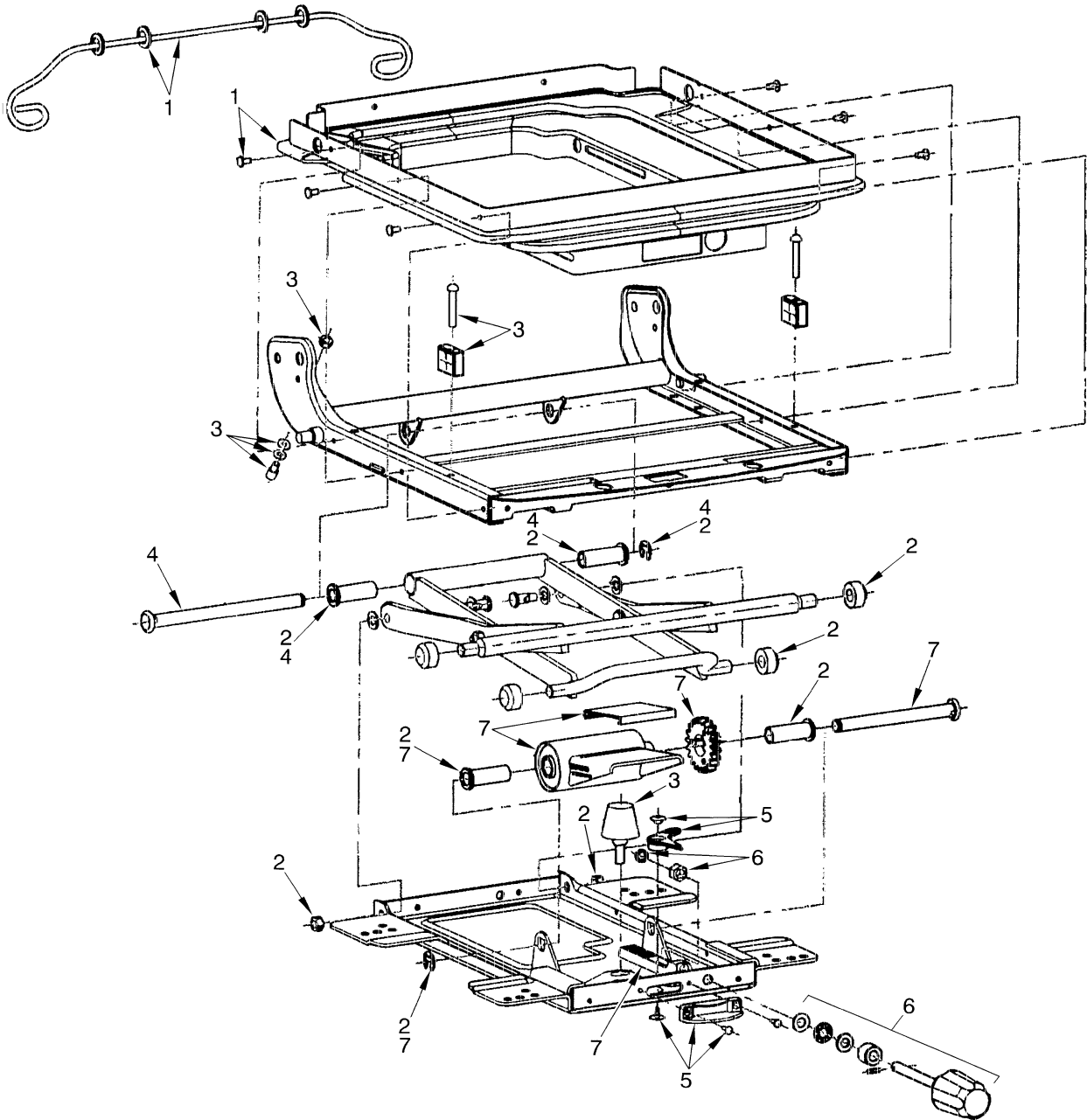
HP120269



FULL SUSPENSION SEAT
(SHEET 1 OF 2)

ITEM	PART NO.	DESCRIPTION	QTY
	524139223	Full Suspension Seat (Vinyl)	1
1	524139579	Back Cushion	1
2	580023146	Seat Cushion (Vinyl)	1
3	580013409	Slider Kit	1
4	580013410	Switch (Seat)	1
5	580013411	Wire Harness	1
6	580013412	Armrest (LH) (LH)	1
7	580013413	Armrest (RH) (RH)	1
8	580013414	Cap (LH)	1
9	580013415	Cap (RH)	1
10	580013416	Cover (LH)	1
11	580013417	Cover (RH)	1
12	580013418	Holder Kit	1
13	580013426	Recliner Kit	1
14	580013427	Recliner Knob	1
15	580013428	Seat Belt Kit	1
16	023604600	Washer	4
17	504238298	Nut	4
18	580017263	Seat Pan	1
19	Capscrew	1
20	504238298	Nut	4
21	023604600	Washer	4
22	Stop	1
23	449001023	Capscrew	4
24	449015044	Nut	4
25	449022013	Lockwasher	4

FULL SUSPENSION SEAT (SHEET 2 OF 2)



HP120270

Thank you so much for reading.
Please click the “Buy Now!”
button below to download the
complete manual.



After you pay.

You can download the most
perfect and complete manual in
the world immediately.

Our support email:

ebooklibonline@outlook.com