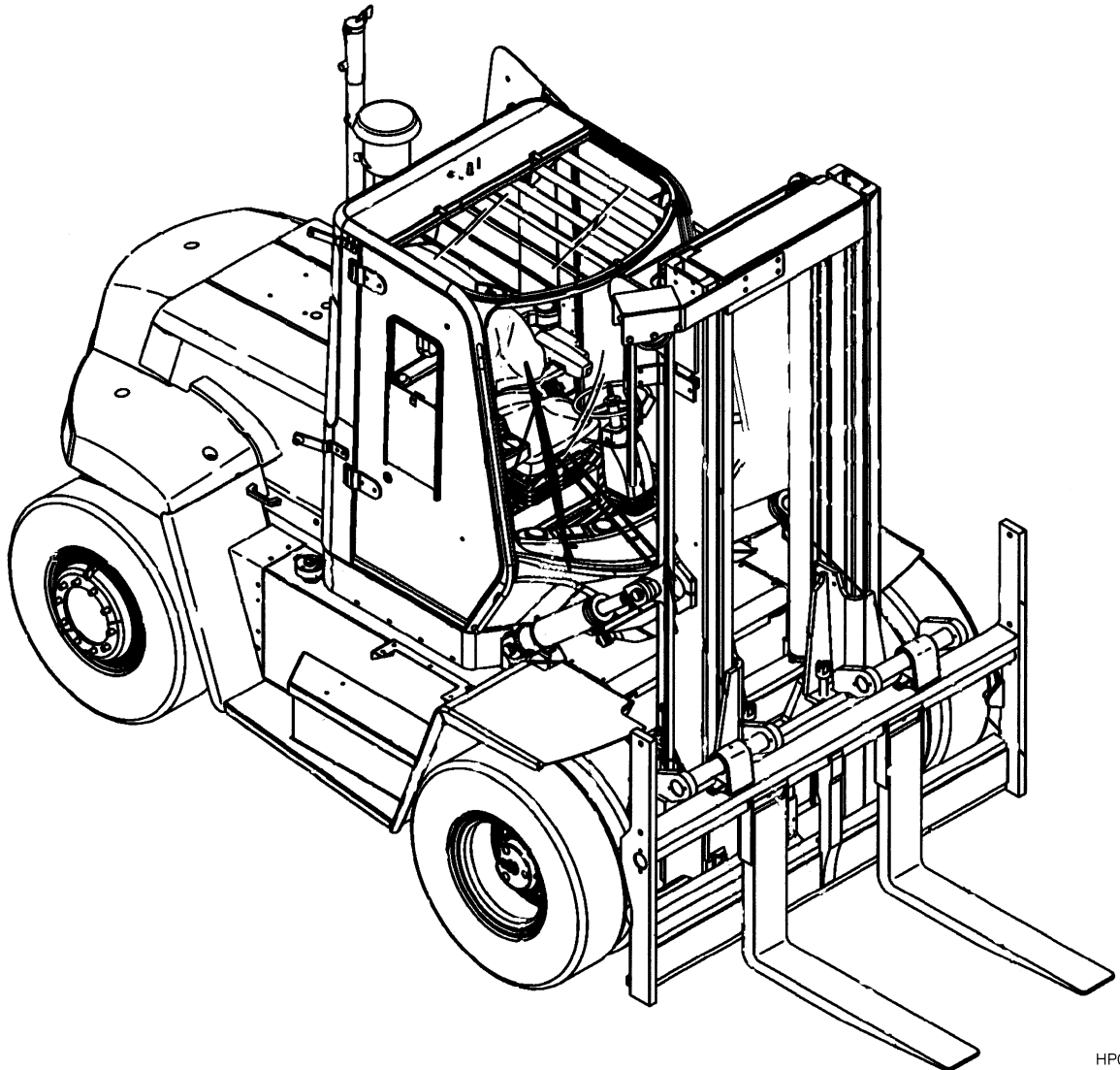


GDP80DB, GDP90DB, GDP100DB, GDP120DB (D876)



HP000765

SECTIONS

1	GENERAL TRUCK
2	ENGINE ASSEMBLY - DIESEL
3	ENGINE ASSEMBLY - LPG
4	FUEL SYSTEM
5	ELECTRICAL SYSTEM
6	STEERING SYSTEM
7	BRAKE SYSTEM
8	TRANSMISSION
9	HYDRAULIC SYSTEM
10	MAST-TWO STAGE LIMITED FREE-LIFT
11	MAST-THREE STAGE FULL FREE-LIFT
12	ATTACHMENTS AND HEADER HOSE GROUP
13	OPTIONS
14	NUMERICAL INDEX

TABLE OF CONTENTS

DESCRIPTION	PAGE
A	
ACCESSORY DRIVE BELT AND TENSIONER	3-8
ACCESSORY HOLE COVER	3-9
ACCUMULATOR CHARGE VALVE	7-42
AIR CLEANER ASSEMBLY	4-14
AIR COMPRESSOR	2-10
AIR COMPRESSOR COOLANT PLUMBING	2-14
AIR COMPRESSOR INLET CONNECTION	3-12
AIR COMPRESSOR MOUNTING	2-12
AIR CONDITIONER	
CLIMATE CONTROL CAB	1-156
AIR CONDITIONER ASSEMBLY	
WITH TWO-FAN CONDENSER SYSTEM (S/N D876E01613F →)	1-106
AIR CONDITIONER SYSTEM	
CLIMATE CONTROL CAB	1-154
WITH TWO-FAN CONDENSER SYSTEM (S/N D876E01613F →)	1-104
AIR CONDITIONER SYSTEM ASSEMBLY	
WITH TWO-FAN CONDENSER SYSTEM (S/N D876E01613F →)	1-98
AIR CONDITIONING COMPRESSOR AND ATTACHING PARTS	
DIESEL ENGINE	1-78
LPG ENGINE	1-80
AIR DRYER ASSEMBLY	7-36
AIR DRYER SYSTEM	
DIESEL ENGINE - DRY BRAKE	7-32
LPG ENGINE - DRY BRAKE	7-34
AIR DUCT	
LOUVER, CLIMATE CONTROL CAB	1-148
AIR DUCT ASSEMBLY	
AIR CONDITIONING - WITH TWO-FAN CONDENSER SYSTEM (S/N D876E01613F →)	1-108
HEATER - WITH TWO-FAN CONDENSER SYSTEM (S/N D876E01613F →)	1-92
AIR HEATER	2-16
AIR INTAKE CONNECTION	2-18
AIR INTAKE HOSE	
→ S/N D876E01630F (DRY BRAKES) → S/N D876E01613F (WET BRAKES)	2-20
AIR INTAKE MANIFOLD	2-21
AIR INTAKE SYSTEM	
DIESEL - DRY BRAKE	4-10
DIESEL - WET BRAKE	4-12
LPG	4-8
AIR TRANSFER CONNECTION	2-22
ALARM	13-5
ALTERNATOR AND MOUNTING	
CUMMINS DIESEL (→ S/N D876E01613F (WET BRAKES)) (→ S/N D876E01630F (DRY BRAKES))	5-34
CUMMINS DIESEL (S/N D876E01614F → (WET BRAKES)) (S/N D876E01631F → (DRY BRAKES))	5-36
CUMMINS LPG	5-37

TABLE OF CONTENTS (continued)

DESCRIPTION	PAGE
ALTERNATOR SUPPORT AND WATER INLET	
→ S/N D876E01613F (WET BRAKES) → S/N D876E01630F (DRY BRAKES)	2-23
S/N D876E01614F → (WET BRAKES) S/N D876E01631F → (DRY BRAKES)	2-24
ARMREST ASSEMBLY	1-144
AUXILIARY PUMP DRIVE	8-14
B	
BATTERY DISCONNECT	5-12
BELT TENSIONER	2-25
BRAKE ACCUMULATOR	7-40
BRAKE AND INCHING PEDAL LINKAGE	7-44
BRAKE ASSEMBLY	
DRY BRAKE	7-20
WET BRAKE - 425 SERIES DRIVE AXLE	7-16
WET BRAKE - 475 SERIES DRIVE AXLE	7-18
BRAKE VALVE	
DRY BRAKE	7-28
WET BRAKE	7-26
BRAKE VALVE (AIR BRAKE)	7-30
C	
CAB AND TILT CYLINDER MOUNTING	1-64
CAB ASSEMBLY	
CLIMATE CONTROL CAB	1-158
CAB ATTACHING PARTS	1-16
CAB DOOR	
LEFT HAND (→ S/N D876E01666G (CLOSED CAB WITH INSULATION))	
(→ S/N D876E01667G (CLOSED CAB WITH HEATER/CLOSED CAB WITH AIR CONDITIONING AND INSULATION))	1-30
LEFT HAND (S/N D876E01667G → (CLOSED CAB WITH INSULATION))	
(S/N D876E01668G → (CLOSED CAB WITH HEATER/CLOSED CAB WITH AIR CONDITIONING AND INSULATION))	1-34
RIGHT	
HAND (→ S/N D876E01667G (CLOSED CAB WITH HEATER/CLOSED CAB WITH AIR CONDITIONING AND INSULATION)) (→ S/N D876E01666G (CLOSED CAB WITH INSULATION))	1-22
RIGHT	
HAND (S/N D876E01668G → (CLOSED CAB WITH HEATER/CLOSED CAB WITH AIR CONDITIONING AND INSULATION)) (S/N D876E01667G → (CLOSED CAB WITH INSULATION))	1-26
CAB DOOR ATTACHING PARTS	1-20
CAB ELECTRONIC CONTROLS AND PANELS	1-62
CAB FLOORMATS	1-37
CAB RECIRCULATING FAN	1-58
CAB SUNSHADES	1-48
CAB TILT PUMP ASSEMBLY	
ELECTRIC	1-71
CAB WINDOWS INSTALLATION	1-40
CAB-MOUNTED DRIVE LIGHTS	13-6
CAM FOLLOWER COVER	3-15
CAMSHAFT	2-26

TABLE OF CONTENTS (continued)

DESCRIPTION	PAGE
CARRIAGE	
FOUR, FIVE, AND SIX FUNCTION	11-2
INDIVIDUAL FORK POSITIONER (FOUR FUNCTION)	10-2
SIMULTANEOUS FORK POSITIONER	10-6
SIMULTANEOUS FORK POSITIONER (THREE FUNCTION)	11-8
THREE FUNCTION	11-10
THREE FUNCTION, (WITHOUT HOSE GROUP)	10-10
WITH HOSE GROUP	10-12
CHARGE PUMP AND FILTER ASSEMBLY	8-16
CLIMATE CONTROL SYSTEM	1-152
COMPRESSOR ASSEMBLY	
WITH TWO-FAN CONDENSER SYSTEM (S/N D876E01613F →)	1-82
CONDENSER	
TWO-FAN SYSTEM (S/N D876E01613F →)	1-102
CONDENSER AND ATTACHING PARTS	
THREE-FAN SYSTEM (→ S/N D876E01612F)	1-76
CONDENSER SYSTEM	
TWO-FAN SYSTEM (S/N D876E01613F →)	1-100
CONNECTING RODS AND PISTONS	
→ S/N D876E01613F (WET BRAKES) → S/N D876E01630F (DRY BRAKES)	2-28
S/N D876E01614F → (WET BRAKES) S/N D876E01631F → (DRY BRAKES)	2-30
CONTROL PANEL	
AIR CONDITIONER	5-22
HEATER	5-24
CONTROL PANEL ASSEMBLY	
WITH TWO-FAN CONDENSER SYSTEM (S/N D876E01613F →)	1-110
COOLANT HEATER STARTING AID	2-32
COOLING SYSTEM	2-6
COUNTERWEIGHT	1-11
COUNTERWEIGHT AND OPTIONAL LIFTING EYES	1-12
CRANKCASE BREATHER	2-33
CRANKSHAFT AND BEARINGS	
→ S/N D876E01613F (WET BRAKES) → S/N D876E01630F (DRY BRAKES)	2-34
S/N D876E01614F → (WET BRAKES) S/N D876E01631F → (DRY BRAKES)	2-36
CRANKSHAFT AND MAIN BEARINGS	3-20
CYLINDER BLOCK	
→ S/N D876E01613F (WET BRAKES) → S/N D876E01630F (DRY BRAKES)	2-38
S/N D876E01614F → (WET BRAKES) S/N D876E01631F → (DRY BRAKES)	2-40
CYLINDER HEAD	2-42
D	
DASH DISPLAY	1-50
DC-DC CONVERTER AND ATTACHING PARTS	5-15
DELUXE SUSPENSION SEAT	1-118
DIFFERENTIAL AND CARRIER	
DRY BRAKE	8-52
WET BRAKE - 425 AND 475 SERIES	8-56
DIRECTIONAL CONTROL VALVE	12-2
DIRECTIONAL MARKER	13-2

TABLE OF CONTENTS (continued)

DESCRIPTION	PAGE
DRAIN VALVE	
DRY BRAKE	7-24
DRIVE AXLE HOUSING AND ATTACHING PARTS	8-50
DRIVE GEAR	8-22
DRIVE PLATE	8-24
DRIVE TIRES AND WHEELS	
BERGOUGNAN - SOLID TIRE	13-17
BRIDGESTONE	13-18
MICHELIN	13-19
TRELLEBORG	13-20
DRY BRAKE SYSTEM	7-12
E	
ELECTRIC HORN	5-111
ELECTRIC PUMP	1-74
ELECTRICAL SYSTEM	
DIESEL ENGINE	5-4
LPG ENGINE	5-8
ELECTRONIC LEVER ASSEMBLY	9-38
WITH CLAMP ATTACHMENT	9-40
END CAP PARTS	
LIFT SECTION	9-24
ENGINE ASSEMBLY	2-44
ENGINE BLOCK HEATER	2-90
ENGINE CONTROL MODULE	2-46
ENGINE CONTROL SYSTEM	
CUMMINS DIESEL (→ S/N D876E01613F (WET BRAKES)) (→ S/N D876E01630F (DRY BRAKES))	
.....	5-26
CUMMINS DIESEL (S/N D876E01614F → (WET BRAKES)) (S/N D876E01631F → (DRY BRAKES))	
.....	5-28
CUMMINS LPG	5-30
ENGINE COOLANT VENT	2-48
ENGINE IGNITION SYSTEM	
CUMMINS LPG	5-40
ENGINE MOUNT	2-49
ENGINE OIL COOLER	2-50
ETR MODULE WIRING	2-51
EXHAUST GAS SENSOR PLUMBING	3-34
EXHAUST MANIFOLD	2-52
EXHAUST OUTLET CONNECTION	3-36
EXHAUST SYSTEM	2-8
EXTERIOR MIRRORS	1-18
F	
FAN DRIVE	3-37
FAN DRIVE AND MOUNTING	2-54
FLOORPLATES	1-4
FLYWHEEL	3-38
FLYWHEEL AND MOUNTING	2-56

TABLE OF CONTENTS (continued)

DESCRIPTION	PAGE
FLYWHEEL HOUSING	
→ S/N D876E01613F (WET BRAKES) → S/N D876E01630F (DRY BRAKES)	2-57
S/N D876E01614F → (WET BRAKES) S/N D876E01631F → (DRY BRAKES) → S/N 73037048 (ENGINE)	
.....	2-58
S/N D876E01614F → (WET BRAKES) S/N D876E01631F → (DRY BRAKES) S/N 73037049 → (ENGINE)	
.....	2-60
FOOT DIRECTIONAL CONTROL PEDAL ASSEMBLY	4-16
FORK POSITIONER CYLINDER	12-4
FORKS	
IDENTIFY BY PART NUMBER	12-6
FORWARD CLUTCH	
→ S/N D876E01670H	8-26
S/N D876E01671H →	8-28
FREE-LIFT CYLINDER	11-12
FRONT FENDER LIGHTS	13-3
FRONT GEAR COVER	2-62
FRONT GEAR COVER AND HOUSING	3-42
FRONT GEAR TRAIN ACCESSORY DRIVE	3-44
FUEL CONTROL MODULE	
CUMMINS LPG	4-24
FUEL FILTER	
CUMMINS DIESEL	4-34
CUMMINS LPG	4-27
FUEL FILTER PLUMBING	
CUMMINS DIESEL	4-33
FUEL INJECTION PUMP	
CUMMINS DIESEL	4-30
FUEL INJECTOR	
CUMMINS DIESEL	4-32
FUEL INJECTOR PLUMBING	
CUMMINS DIESEL	4-28
FUEL INLET FITTING	
CUMMINS DIESEL	4-35
FUEL RAIL SYSTEM	
CUMMINS DIESEL (→ S/N D876E01613F (WET BRAKES)) (→ S/N D876E01630F (DRY BRAKES))	
.....	4-36
CUMMINS DIESEL (S/N D876E01631F → (DRY BRAKES)) (S/N D876E01614F → (WET BRAKES))	
.....	4-38
FUEL SYSTEM	
DIESEL	4-6
LPG	4-2
FUEL SYSTEM ACCESSORIES	
CUMMINS LPG	4-20
G	
GEAR CLUTCH INSTALLATION	8-30
H	
HAND PUMP	1-72

TABLE OF CONTENTS (continued)

DESCRIPTION	PAGE
HANDHOLD AND UNDERFLOOR COVER	
OPEN CAB	1-38
HEADER HOSE	
THREE STAGE FULL FREE-LIFT	12-8
TWO STAGE LIMITED FREE-LIFT	12-10
HEATED TOP WINDOW	
CLIMATE CONTROL CAB	13-24
HEATER AND AIR CONDITIONER ASSEMBLY	
WITH THREE-FAN CONDENSER SYSTEM	1-88
HEATER AND AIR CONDITIONER MOUNTING	
WITH THREE-FAN CONDENSER SYSTEM	1-84
HEATER AND AIR DUCT ASSEMBLY	
WITH TWO-FAN CONDENSER SYSTEM	1-90
HEATER ASSEMBLY	
WITH THREE-FAN CONDENSER SYSTEM	1-86
WITH TWO-FAN CONDENSER SYSTEM (S/N D876E01613F →)	1-94
HEATER HOSES	
DIESEL ENGINE	1-112
LPG ENGINE	1-114
HEATER SYSTEM	
WITH TWO-FAN CONDENSER SYSTEM (S/N D876E01613F →)	1-96
HEATING AND AIR CONDITIONING SYSTEM FILTER	1-97
HOODS AND COVERS	1-8
HUB AND SHAFT ASSEMBLY	
DRY BRAKE	8-60
WET BRAKE - 425 SERIES	8-62
WET BRAKE - 475 SERIES	8-64
HYDRAULIC CONTROL VALVE AND ATTACHING PARTS	
SHEET 1 OF 2	9-18
SHEET 2 OF 2	9-20
HYDRAULIC CONTROL VALVE ASSEMBLY	9-14
HYDRAULIC CONTROLS	
JOYSTICK	9-29
LEVERS	9-26
HYDRAULIC GEAR PUMP	
DIESEL ENGINE - WET BRAKE	7-39
LPG ENGINE - WET BRAKE	7-38
HYDRAULIC PUMP	9-30
HYDRAULIC SUPPLY AND RETURN	
SHEET 1 OF 3	9-2
SHEET 2 OF 3	9-6
SHEET 3 OF 3	9-8
HYDRAULIC TANK AND ATTACHING PARTS	
→ S/N D876E01634F	9-10
S/N D876E01635F →	9-12
I	
INDICATOR DISPLAY AND CONTROLS	1-60
INNER MAST	10-16

TABLE OF CONTENTS (continued)

DESCRIPTION	PAGE
INTAKE MANIFOLD	3-46
J	
JOYSTICK ASSEMBLY	
TWISTLOCKS	5-20
L	
LABELS	
HYDRAULIC CONTROL - JOYSTICK	1-142
HYDRAULIC CONTROL - LEVERS	1-143
LPG FUEL TRUCK	1-140
MAIN	1-138
LIFT	10-18
LIFT ACCUMULATOR AND ATTACHING PARTS	9-33
LIFT ACCUMULATOR ASSEMBLY	9-32
LIFTING BRACKET	3-48
LIFTING BRACKETS AND MOUNTING	
→ S/N D876E01613F (WET BRAKES) → S/N D876E01630F (DRY BRAKES)	2-63
S/N D876E01614F → (WET BRAKES) S/N D876E01631F → (DRY BRAKES)	2-64
LIFTING EYES	13-22
LIGHT SWITCHES	5-14
LOUVER	
CLIMATE CONTROL CAB	1-146
LOW CLUTCH	
→ S/N D876E01670H	8-34
S/N D876E01671H →	8-36
LUBRICATING OIL PUMP	2-66
M	
MAIN LIFT CYLINDER	10-22
MAIN WINDOW ASSEMBLY	1-42
MAST ASSEMBLY	
SHEET 1 OF 3	11-16
SHEET 2 OF 3	11-18
SHEET 3 OF 3	11-20
MAST INSTALLATION	9-42
MAST WORKLIGHTS	
TWO AND THREE STAGE MAST	13-10
O	
OIL FILLER	2-67
OIL FILTER	2-68
OIL LEVEL GAUGE	2-69
OIL PAN	2-70
OIL PUMP	3-54
OUTER MAST	
TWO STAGE LIMITED FREE-LIFT	10-26
OUTPUT FLANGE	8-38

TABLE OF CONTENTS (continued)

DESCRIPTION	PAGE
OUTPUT SHAFT	
→ S/N D876E01670H	8-40
S/N D876E01671H →	8-42
OVERHEAD GUARD	
WIRE MESH	1-14
P	
PARK BRAKE	
WET BRAKE	8-66
PARK BRAKE SOLENOID VALVE	7-2
PILOT VALVE ASSEMBLY	9-22
PISTON AND CONNECTING ROD	3-56
PIVOT ARM ASSEMBLY	1-136
R	
RADIATOR ASSEMBLY	2-4
RADIO CONSOLE	1-54
RADIO PREPARATION	1-52
REAR DUCT AND CONSOLE	1-56
REAR GEAR HOUSING	2-72
REAR WORK LIGHTS	13-12
RELAYS AND FUSES	5-16
REMOTE FUEL FILTER	
CUMMINS DIESEL (→ S/N D876E01613F (WET BRAKES)) (→ S/N D876E01630F (DRY BRAKES))	
.....	4-21
CUMMINS DIESEL (S/N D876E01614F → (WET BRAKES)) (S/N D876E01631F → (DRY BRAKES))	
.....	4-22
REVERSE AND SECOND CLUTCH	8-44
REVERSE IDLER SHAFT	8-32
ROCKER LEVERS	2-74
S	
SEAT ASSEMBLY	1-132
CLIMATE CONTROL CAB	1-150
SEAT SUSPENSION ASSEMBLY	
AIR	1-120
MECHANICAL	1-124
SEAT SUSPENSION MOUNTING	1-128
SECOND 12V SOCKET OPTION	
CLIMATE CONTROL CAB	5-110
SIDE-SHIFT CARRIAGE	
THREE FUNCTION - THREE STAGE FULL FREE-LIFT	12-26
THREE STAGE FULL FREE-LIFT - FOUR, FIVE, AND SIX FUNCTION	12-14
THREE STAGE FULL FREE-LIFT - INDIVIDUAL FORK POSITIONER (FIVE FUNCTION)	12-18
THREE STAGE FULL FREE-LIFT - SIMULTANEOUS FORK POSITIONER (FOUR FUNCTION)	12-22
TWO STAGE LIMITED FREE-LIFT - INDIVIDUAL FORK POSITIONER (FIVE FUNCTION)	12-28
TWO STAGE LIMITED FREE-LIFT - SIMULTANEOUS FORK POSITIONER (FOUR FUNCTION)	12-32
TWO STAGE LIMITED FREE-LIFT - WITH HOSE GROUP	12-36
SIDE-SHIFT CYLINDER	
TWO STAGE LIMITED FREE-LIFT AND THREE STAGE FULL FREE-LIFT	12-40

TABLE OF CONTENTS (continued)

DESCRIPTION	PAGE
SOUND REDUCTION	
HOOD	13-21
STANDARD PIN CARRIAGE	
INDIVIDUAL FORK POSITIONER (FOUR FUNCTION)	11-6
THREE STAGE - FOUR, FIVE, AND SIX FUNCTION	11-4
STARTER MOTOR	
CUMMINS DIESEL	5-32
CUMMINS LPG	5-33
STEER AXLE	6-8
STEER CYLINDER	6-6
STEER TIRES AND WHEELS	
BERGOUGNAN - SOLID TIRE	13-13
BRIDGESTONE	13-14
MICHELIN	13-15
TRELLEBORG	13-16
STEERING COLUMN AND ATTACHING PARTS	6-4
STEERING COLUMN ASSEMBLY	6-2
STROBE LIGHT	13-8
T	
TAIL LIGHT ASSEMBLY	13-4
THERMOSTAT	2-76
THERMOSTAT HOUSING	3-61
THIRD CLUTCH	8-46
THROTTLE PEDAL LINKAGE	4-18
TILT CYLINDER	
CAB	1-68
TILT CYLINDER AND ATTACHING PARTS	9-36
TILT CYLINDER ASSEMBLY	9-34
TILT PLATFORM ASSEMBLY	1-70
TORQUE CONVERTER ASSEMBLY	8-8
TORQUE CONVERTER COOLER PLUGS	2-77
TORQUE CONVERTER HOUSING AND ATTACHING PARTS	8-6
TRAINING SEAT	1-116
TRANSMISSION CASE	8-12
TRANSMISSION CONTROL VALVE	8-18
TRANSMISSION MOUNT AND ATTACHING PARTS	
DIESEL ENGINE	8-4
LPG ENGINE	8-2
TURBINE SHAFT AND STATOR SUPPORT	8-48
TURBOCHARGER	2-78
TURBOCHARGER ASSEMBLY	3-68
TURBOCHARGER COMPRESSOR OUTLET CONNECTION	3-64
TURBOCHARGER PLUMBING	
→ S/N D876E01630F (DRY BRAKES) → S/N D876E01613F (WET BRAKES)	2-79
S/N D876E01631F → (DRY BRAKES) S/N D876E01614F → (WET BRAKES)	2-80
U	
UNIVERSAL SHAFT	8-10

TABLE OF CONTENTS (continued)

DESCRIPTION	PAGE
V	
VALVE COVER	2-82
VALVE TAPPET	3-72
VALVE TAPPETS	2-83
VIBRATION DAMPER	
→ S/N D876E01613F (WET BRAKES) → S/N D876E01630F (DRY BRAKES)	2-84
S/N D876E01614F → (WET BRAKES) S/N D876E01631F → (DRY BRAKES)	2-85
W	
WATER INLET CONNECTION	3-76
WATER OUTLET CONNECTION	2-86
WATER PUMP	2-87
WATER PUMP DRIVE	2-88
WET BRAKE SYSTEM	
DIESEL ENGINE	7-8
LPG ENGINE	7-4
WINDOW WIPER SYSTEM	
REAR AND ROOF WIPER KITS - AND FRONT WIPER OPTIONS	1-46
WASHER BOTTLE KIT	1-44

TABLE OF CONTENTS (continued)

DESCRIPTION	PAGE
WIRE HARNESS	
AIR DRYER	5-91
ARMREST - OPEN CAB	5-96
ARMREST - CLOSED CAB	5-98
BACK-UP ALARM	5-76
BRAKE TEMPERATURE	5-75
CAB LIGHTS	5-80
CAB SIDE CONSOLE - SHEET 1 OF 3	5-58
CAB SIDE CONSOLE - SHEET 2 OF 3	5-62
CAB SIDE CONSOLE - SHEET 3 OF 3	5-66
CAB TILT	5-94
CAB UNDERFLOOR	5-92
CHASSIS, DIESEL - SHEET 1 OF 2	5-50
CHASSIS, DIESEL - SHEET 2 OF 2	5-54
CHASSIS, LPG - SHEET 1 OF 2	5-42
CHASSIS, LPG - SHEET 2 OF 2	5-46
CLOSED CAB	5-68
FRONT END	5-105
FRONT LIGHTS - WITH FRONT FENDER AND MAST WORKLIGHTS	5-82
FRONT LIGHTS	5-84
HYDRAULIC OIL TEMPERATURE	5-104
MAST LIGHT EXTENSION - RIGHT HAND	5-87
MAST LIGHT EXTENSION - LEFT HAND	5-88
MAST WORKLIGHT EXTENSION	5-86
OPEN CAB	5-72
REAR DRIVE LIGHT EXTENSION	5-78
REAR WIPER	5-100
REAR WORK LIGHTS	5-89
SHIFT LEVER	5-108
STEERING COLUMN	5-102
STROBE LIGHT	5-90
TAIL LIGHTS	5-109
TWO STAGE LIMITED FREE-LIFT	5-107
WINDOW WASH PUMPS	5-74

**SECTION 1
GENERAL TRUCK**

DESCRIPTION	PAGE
AIR CONDITIONER	
CLIMATE CONTROL CAB	1-156
AIR CONDITIONER ASSEMBLY	
WITH TWO-FAN CONDENSER SYSTEM (S/N D876E01613F →)	1-106
AIR CONDITIONER SYSTEM	
CLIMATE CONTROL CAB	1-154
WITH TWO-FAN CONDENSER SYSTEM (S/N D876E01613F →)	1-104
AIR CONDITIONER SYSTEM ASSEMBLY	
WITH TWO-FAN CONDENSER SYSTEM (S/N D876E01613F →)	1-98
AIR CONDITIONING COMPRESSOR AND ATTACHING PARTS	
DIESEL ENGINE	1-78
LPG ENGINE	1-80
AIR DUCT	
LOUVER, CLIMATE CONTROL CAB	1-148
AIR DUCT ASSEMBLY	
AIR CONDITIONING - WITH TWO-FAN CONDENSER SYSTEM (S/N D876E01613F →)	1-108
HEATER - WITH TWO-FAN CONDENSER SYSTEM (S/N D876E01613F →)	1-92
ARMREST ASSEMBLY	1-144
CAB AND TILT CYLINDER MOUNTING	1-64
CAB ASSEMBLY	
CLIMATE CONTROL CAB	1-158
CAB ATTACHING PARTS	1-16
CAB DOOR	
LEFT HAND (→ S/N D876E01666G (CLOSED CAB WITH INSULATION))	
(→ S/N D876E01667G (CLOSED CAB WITH HEATER/CLOSED CAB WITH AIR CONDITIONING AND INSULATION))	1-30
LEFT HAND (S/N D876E01667G → (CLOSED CAB WITH INSULATION))	
(S/N D876E01668G → (CLOSED CAB WITH HEATER/CLOSED CAB WITH AIR CONDITIONING AND INSULATION))	1-34
RIGHT	
HAND (→ S/N D876E01667G (CLOSED CAB WITH HEATER/CLOSED CAB WITH AIR CONDITIONING AND INSULATION)) (→ S/N D876E01666G (CLOSED CAB WITH INSULATION))	1-22
RIGHT	
HAND (S/N D876E01668G → (CLOSED CAB WITH HEATER/CLOSED CAB WITH AIR CONDITIONING AND INSULATION)) (S/N D876E01667G → (CLOSED CAB WITH INSULATION))	1-26
CAB DOOR ATTACHING PARTS	1-20
CAB ELECTRONIC CONTROLS AND PANELS	1-62
CAB FLOORMATS	1-37
CAB RECIRCULATING FAN	1-58
CAB SUNSHADES	1-48
CAB TILT PUMP ASSEMBLY	
ELECTRIC	1-71
CAB WINDOWS INSTALLATION	1-40
CLIMATE CONTROL SYSTEM	1-152
COMPRESSOR ASSEMBLY	
WITH TWO-FAN CONDENSER SYSTEM (S/N D876E01613F →)	1-82
CONDENSER	
TWO-FAN SYSTEM (S/N D876E01613F →)	1-102

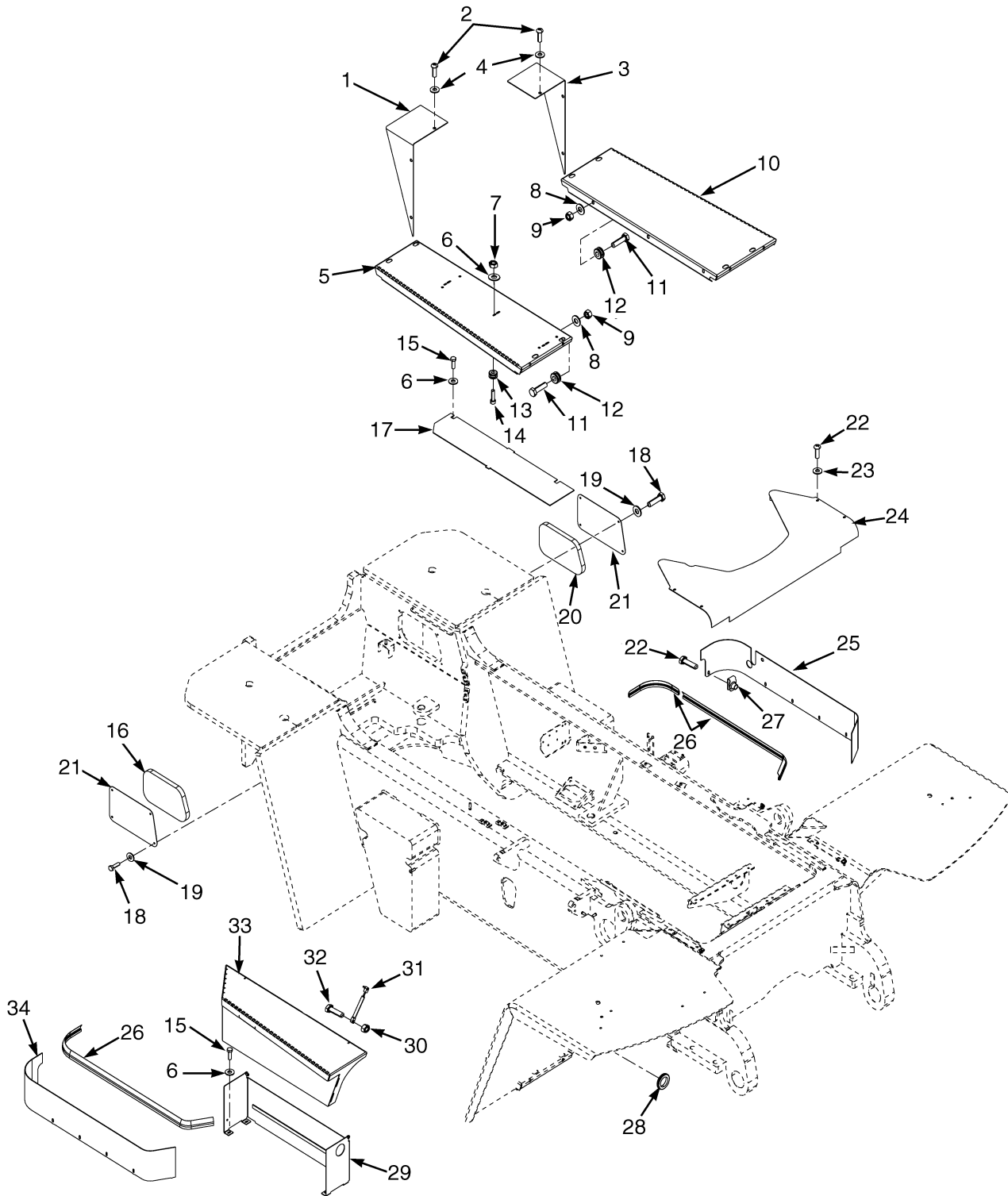
SECTION 1 GENERAL TRUCK

DESCRIPTION	PAGE
CONDENSER AND ATTACHING PARTS	
THREE-FAN SYSTEM (→ S/N D876E01612F)	1-76
CONDENSER SYSTEM	
TWO-FAN SYSTEM (S/N D876E01613F →)	1-100
CONTROL PANEL ASSEMBLY	
WITH TWO-FAN CONDENSER SYSTEM (S/N D876E01613F →)	1-110
COUNTERWEIGHT	1-11
COUNTERWEIGHT AND OPTIONAL LIFTING EYES	1-12
DASH DISPLAY	1-50
DELUXE SUSPENSION SEAT	1-118
ELECTRIC PUMP	1-74
EXTERIOR MIRRORS	1-18
FLOORPLATES	1-4
HAND PUMP	1-72
HANDHOLD AND UNDERFLOOR COVER	
OPEN CAB	1-38
HEATER AND AIR CONDITIONER ASSEMBLY	
WITH THREE-FAN CONDENSER SYSTEM	1-88
HEATER AND AIR CONDITIONER MOUNTING	
WITH THREE-FAN CONDENSER SYSTEM	1-84
HEATER AND AIR DUCT ASSEMBLY	
WITH TWO-FAN CONDENSER SYSTEM	1-90
HEATER ASSEMBLY	
WITH THREE-FAN CONDENSER SYSTEM	1-86
WITH TWO-FAN CONDENSER SYSTEM (S/N D876E01613F →)	1-94
HEATER HOSES	
DIESEL ENGINE	1-112
LPG ENGINE	1-114
HEATER SYSTEM	
WITH TWO-FAN CONDENSER SYSTEM (S/N D876E01613F →)	1-96
HEATING AND AIR CONDITIONING SYSTEM FILTER	1-97
HOODS AND COVERS	1-8
INDICATOR DISPLAY AND CONTROLS	1-60
LABELS	
HYDRAULIC CONTROL - JOYSTICK	1-142
HYDRAULIC CONTROL - LEVERS	1-143
LPG FUEL TRUCK	1-140
MAIN	1-138
LOUVER	
CLIMATE CONTROL CAB	1-146
MAIN WINDOW ASSEMBLY	1-42
OVERHEAD GUARD	
WIRE MESH	1-14
PIVOT ARM ASSEMBLY	1-136
RADIO CONSOLE	1-54
RADIO PREPARATION	1-52
REAR DUCT AND CONSOLE	1-56
SEAT ASSEMBLY	1-132
CLIMATE CONTROL CAB	1-150

**SECTION 1
GENERAL TRUCK**

DESCRIPTION	PAGE
SEAT SUSPENSION ASSEMBLY	
AIR	1-120
MECHANICAL	1-124
SEAT SUSPENSION MOUNTING	1-128
TILT CYLINDER	
CAB	1-68
TILT PLATFORM ASSEMBLY	1-70
TRAINING SEAT	1-116
WINDOW WIPER SYSTEM	
REAR AND ROOF WIPER KITS - AND FRONT WIPER OPTIONS	1-46
WASHER BOTTLE KIT	1-44

FLOORPLATES (FIGURE 1-1)



HP121095

FLOORPLATES

KEY:

A: GDP/GLP80DB, GDP/GLP90DB

B: GDP/GLP100DB, GDP/GLP120DB

ITEM	PART NO.	DESCRIPTION	QTY	
			A	B
1	b 524280921	Plate (RH)	1	..
1	c 524311094	Extension (RH)	1	..
1	b 524280905	Extension (RH)	1
1	c 524312171	Extension (RH)	1
2	580081581	Capscrew	6	6
3	b 524280920	Plate (LH)	1	..
3	c 524311894	Extension (LH)	1	..
3	b 524280904	Extension (LH)	1
3	c 524312170	Extension (LH)	1
4	580055633	Washer	6	6
5	b 524282486	Running Board (RH)	1	..
5	c 524312053	Running Board (RH)	1	..
5	b 524282487	Running Board (RH)	1
5	c 524312054	Running Board (RH)	1
6	b 504226242	Washer	28	28
6	c 504226242	Washer	16	16
7	b 449015098	Nut	8	8
8	b 449015115	Locknut	6	6
9	b 504225227	Washer	18	18
10	b 524282338	Running Board (LH)	1	..
10	c 524325830	Running Board (LH)	1	..
10	b 524282339	Running Board (LH)	1
10	c 524325831	Running Board (LH)	1
11	b 449001004	Capscrew	6	6
12	b 580001469	Grommet	6	6
13	b 580006967	Grommet	8	8
14	580047534	Capscrew	8	8
15	449001014	Screw	4	4
16	580073662	Sound Liner (RH)	1	1
17	580077238	Cover	1	1
18	449001134	Capscrew	8	8
19	449021001	Washer	8	8
20	580073659	Sound Liner (LH)	1	1
21	580073658	Plate	2	2
22	580082765	Capscrew	14	14
23	580056003	Washer	14	14
24	524144731	Cover	1	1
25	524143592	Panel (LH)	1	1
26	580022014	Seal-Bulk	AR	AR
27	580026621	Nut	14	14
28	580003238	Grommet	1	1
29	580077253			
	550013524	Box (Battery)	1	1
30	580004592	Nut	2	2
31	580039081	Gas Spring	1	1
32	580037280	Capscrew	2	2

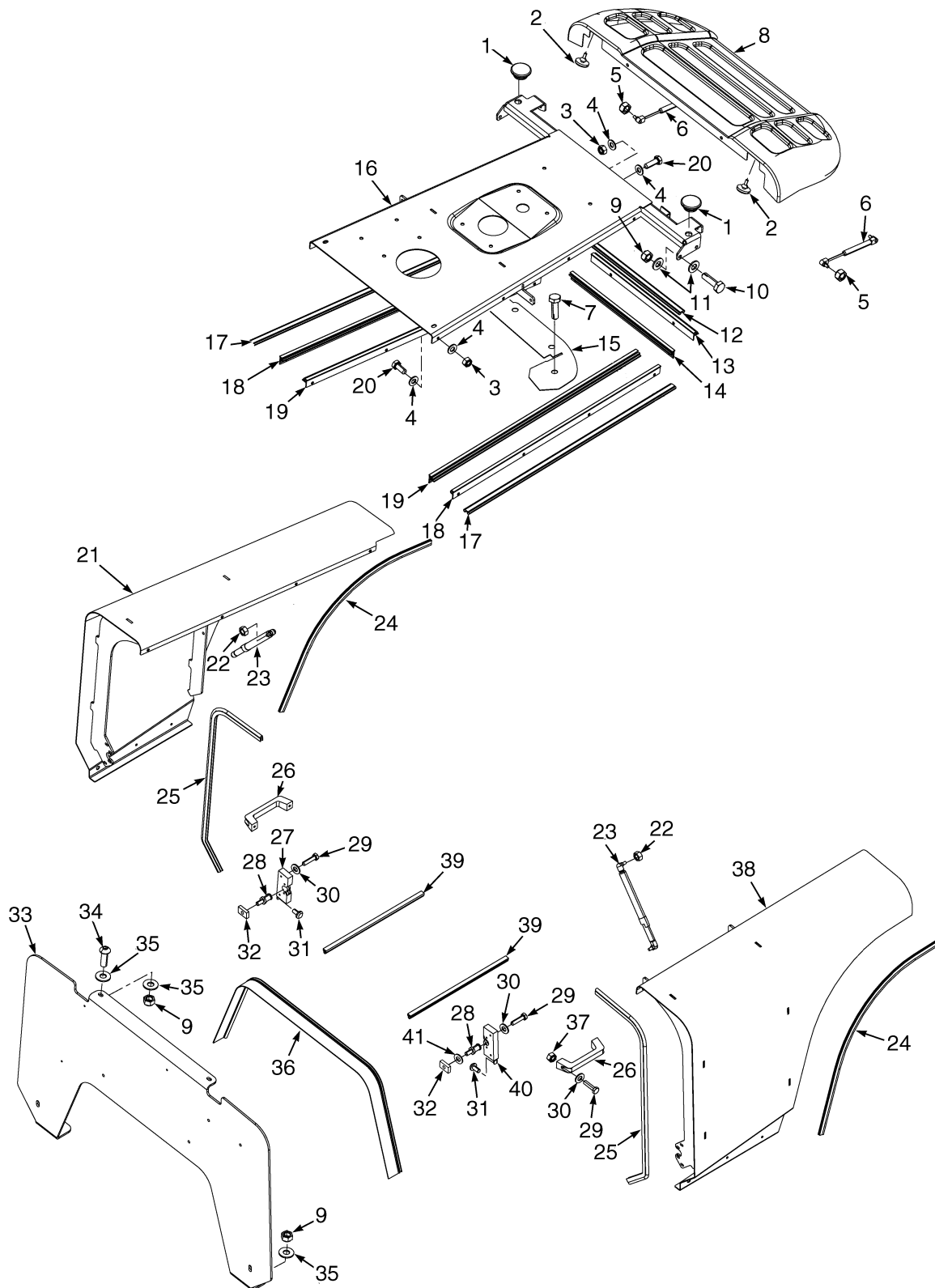
FLOORPLATES

KEY:**A:** GDP/GLP80DB, GDP/GLP90DB**B:** GDP/GLP100DB, GDP/GLP120DB

ITEM	PART NO.	DESCRIPTION	QTY	
			A	B
33	580077251	Cover (Battery Box)	1	1
33	550013525	Cover (Battery Box) (With Battery Disconnect Switch)	1	1
34	524143593	Panel (RH)	1	1
	a 518795609	Foam Tape (Counterweight)	AR	AR
	ac 580092780	Damper	12	12
	ac 449001028	Capscrew	4	4

FOOTNOTES:**a** Not Illustrated**c** S/N D876E01635F →**b** → S/N D876E01634F

HOODS AND COVERS (FIGURE 1-2)



HP121091

HOODS AND COVERS

KEY:

A: GDP100DB, GDP120DB

B: GDP80DB, GDP90DB

ITEM	PART NO.	DESCRIPTION	QTY	
			A	B
1	580082606	Plug	2	2
2	580077818	Button	2	2
3	449015098	Nut	20	20
4	449021001	Washer	20	20
5	580004592	Nut	2	2
6	580077819	Gas Spring	2	2
7	580083686	Rivet	9	9
8	580077745	Cover	1	..
8	580077744	Cover	1
8	580086984	Cover (Alternate Part)	1
9	449015036	Locknut	8	8
10	449001015	Capscrew	4	4
11	449021006	Washer	8	8
12	580072723	Hinge	1	1
13	580072718	Hinge	1	1
14	580072717	Hinge	1	1
15	580083468	Seal	1	1
16	580073729	Support	1	1
17	580072722	Hinge	2	2
18	580072715	Hinge	2	2
19	580072716	Hinge	2	2
20	580081111	Capscrew	16	16
21	524268653	Hood (LH)	1	..
21	524268651	Hood (LH)	1
22	449015014	Nut	4	4
23	580032060	Gas Spring	2	2
24	580074006	Trim Seal	2	..
24	580074005	Trim Seal	2
25	580072833	Trim Seal	2	2
26	504235245	Handle	2	2
27	580072817	Latch	1	1
28	580028818	Bolt	2	2
29	449001121	Capscrew	12	12
30	449021003	Washer	12	12
31	580077750	Button (Unlock)	2	2
32	580028816	Block (Tapped)	2	2
33	580082604	Plate	1	1
34	580081581	Capscrew	2	2
35	580055633	Washer	6	6
36	580073449	Trim Seal	1	1
37	449015135	Nut	4	4
38	524268654	Hood (RH)	1	..
38	524268652	Hood (RH)	1
39	580072994	Trim Seal	2	..
39	580072993	Trim Seal	2
40	580072816	Latch	1	1

HOODS AND COVERS

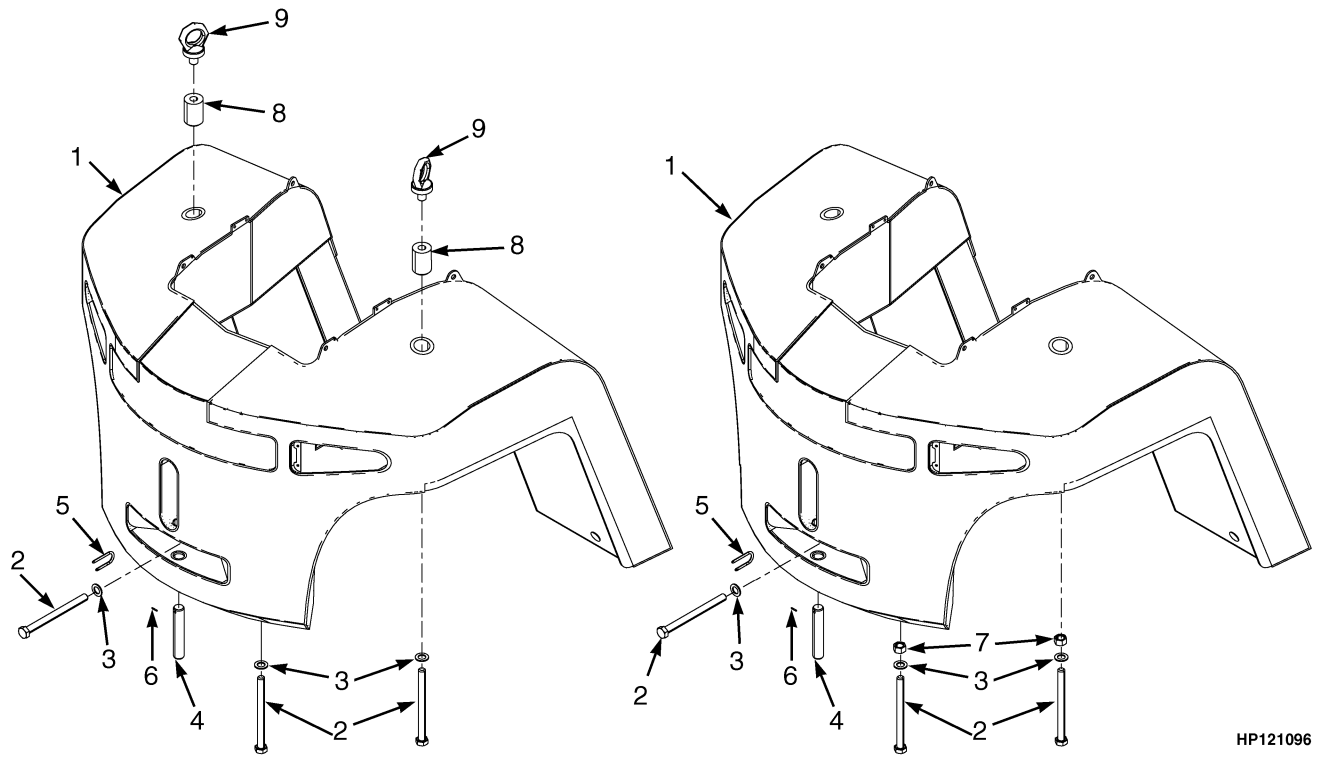
KEY:

A: GDP100DB, GDP120DB

B: GDP80DB, GDP90DB

ITEM	PART NO.	DESCRIPTION	QTY	
			A	B
41	449021010	Washer	2	2

COUNTERWEIGHT (FIGURE 1-3)



HP121096

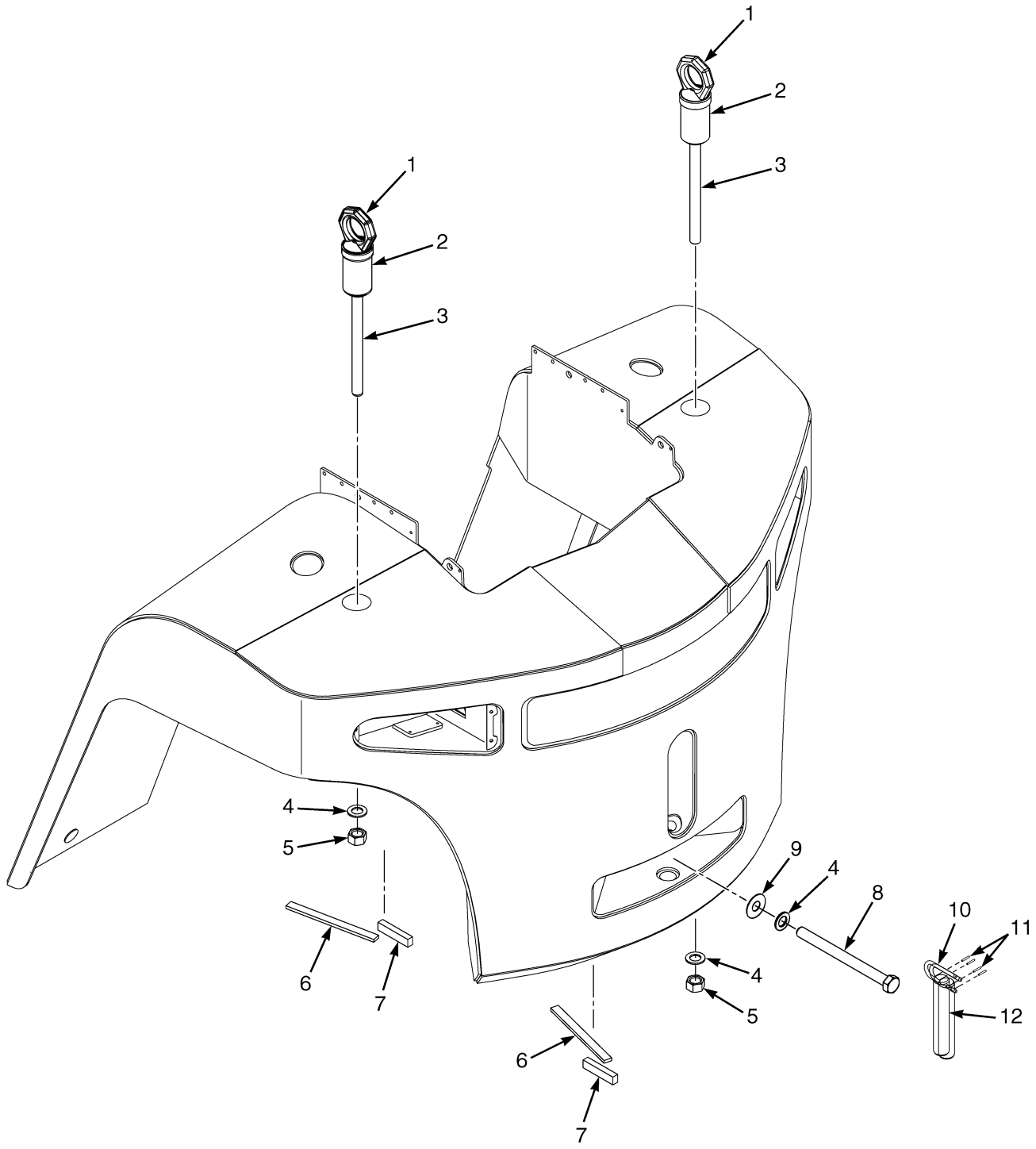
KEY:

A: Without Lifting Eyes

B: With Lifting Eyes

ITEM	PART NO.	DESCRIPTION	QTY	
			A	B
1	524281010	Counterweight (GDP080DB)	1	1
1	524281011	Counterweight (GDP090DB)	1	1
1	524281012	Counterweight (GDP100DB)	1	1
1	524281014	Counterweight (GDP120DB)	1	1
2	580064244	Capscrew	3	3
3	580008887	Washer	5	5
4	580082763	Tow Pin	1	1
5	580077641	Grip	1	1
6	449034085	Roll Pin	2	2
7	937300930	Nut	2	..
8	580076808	Nut (Special)	2
9	580031128	Lifting Eye	2
	580031198	Foam Tape	AR	AR
	580003802	Foam	AR	AR

COUNTERWEIGHT AND OPTIONAL LIFTING EYES (FIGURE 1-4)



BP000542

COUNTERWEIGHT AND OPTIONAL LIFTING EYES

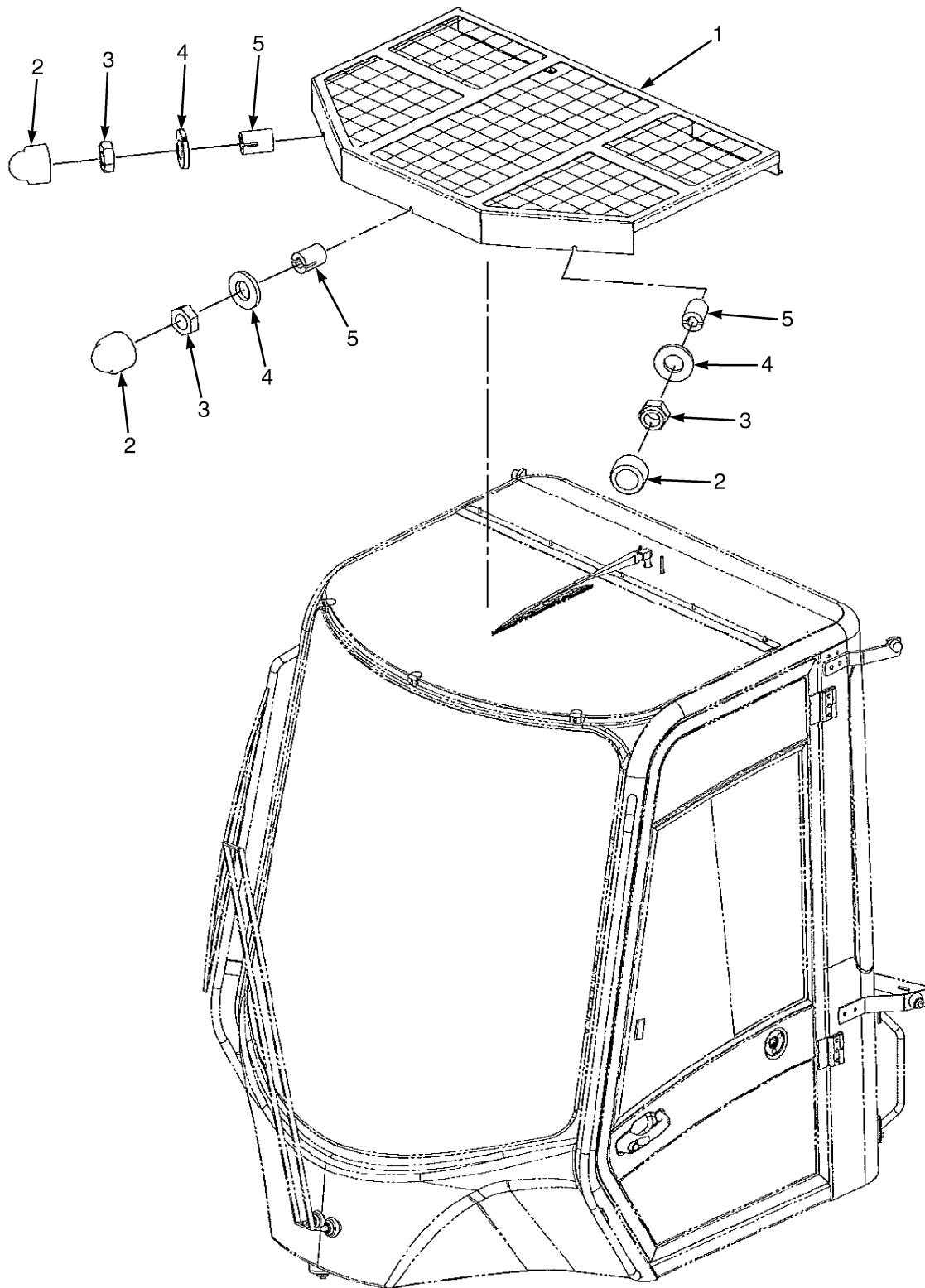
KEY:

A: With Optional Lifting Eyes (Shown)

B: Without Optional Lifting Eyes

ITEM	PART NO.	DESCRIPTION	QTY	
			A	B
	524281010	Counterweight (GDP080DB)	1	1
	524281011	Counterweight (GDP090DB)	1	1
	524281012	Counterweight (GDP100DB)	1	1
	524281014	Counterweight (GDP120DB)	1	1
1	580031128	Lifting Eye	2	..
2	580085985	Nut	2	..
3	580086033	Stud	2	..
4	580008887	Washer	3	5
5	937300930	Nut	2	2
6	580031198	Foam Tape	AR	AR
7	580003802	Foam	AR	AR
8	580064244	Capscrew	1	3
9	580085984	Shim	2	2
10	580077641	Grip	1	1
11	449034085	Roll Pin	2	2
12	580082763	Tow Pin	1	1

OVERHEAD GUARD (FIGURE 1-5) WIRE MESH

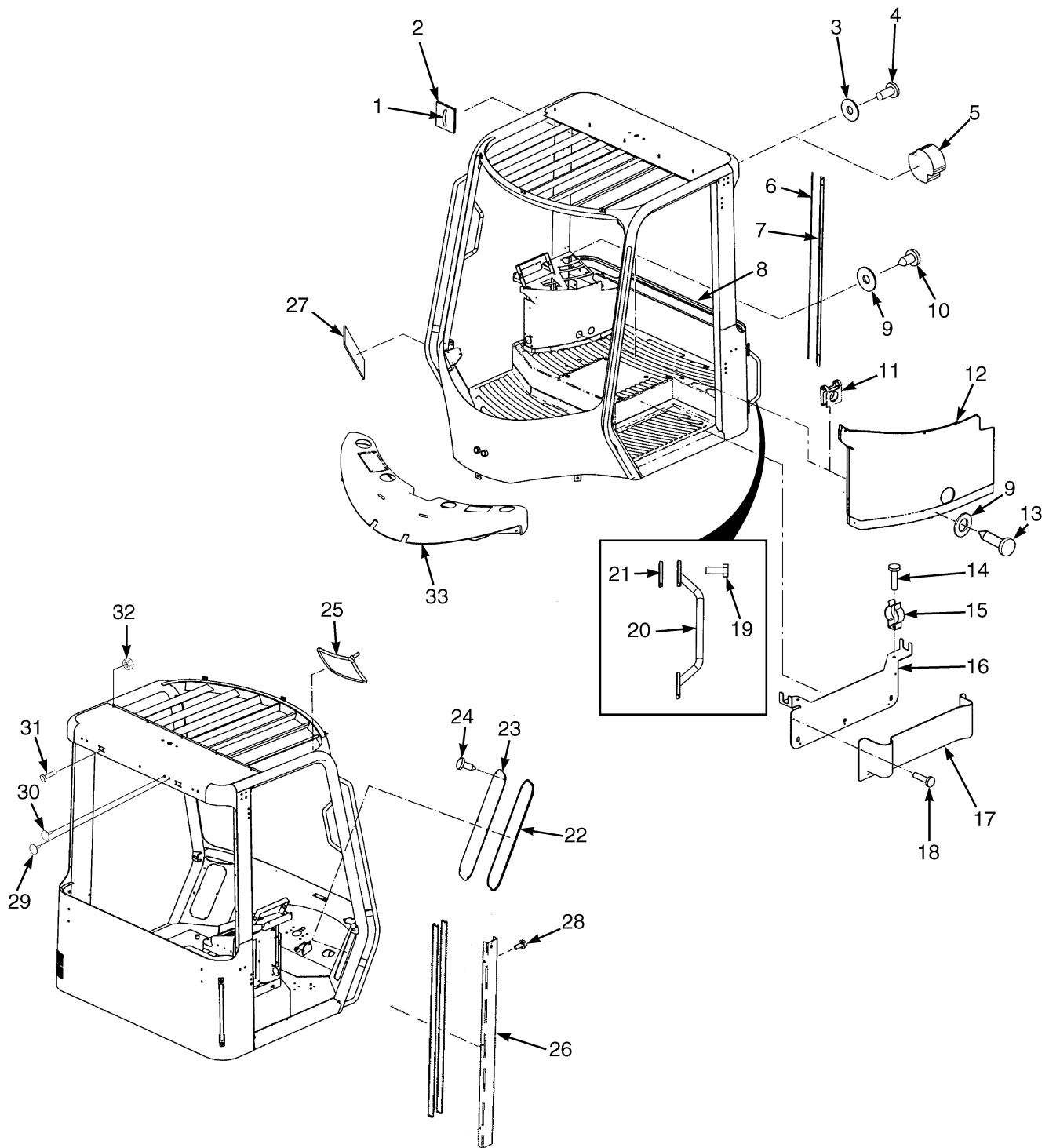


HP121220

**OVERHEAD GUARD
WIRE MESH**

ITEM	PART NO.	DESCRIPTION	QTY
	582002101	Guard Assembly	1
1	582001923	Overhead Guard	1
2	580022780	Cap (Capscrew Head)	3
3	582001925	Nut	3
3	580060020	Nut (Alternate Part)	3
4	580025719	Washer	3
5	582001924	Insert (Threaded)	3

CAB ATTACHING PARTS (FIGURE 1-6)

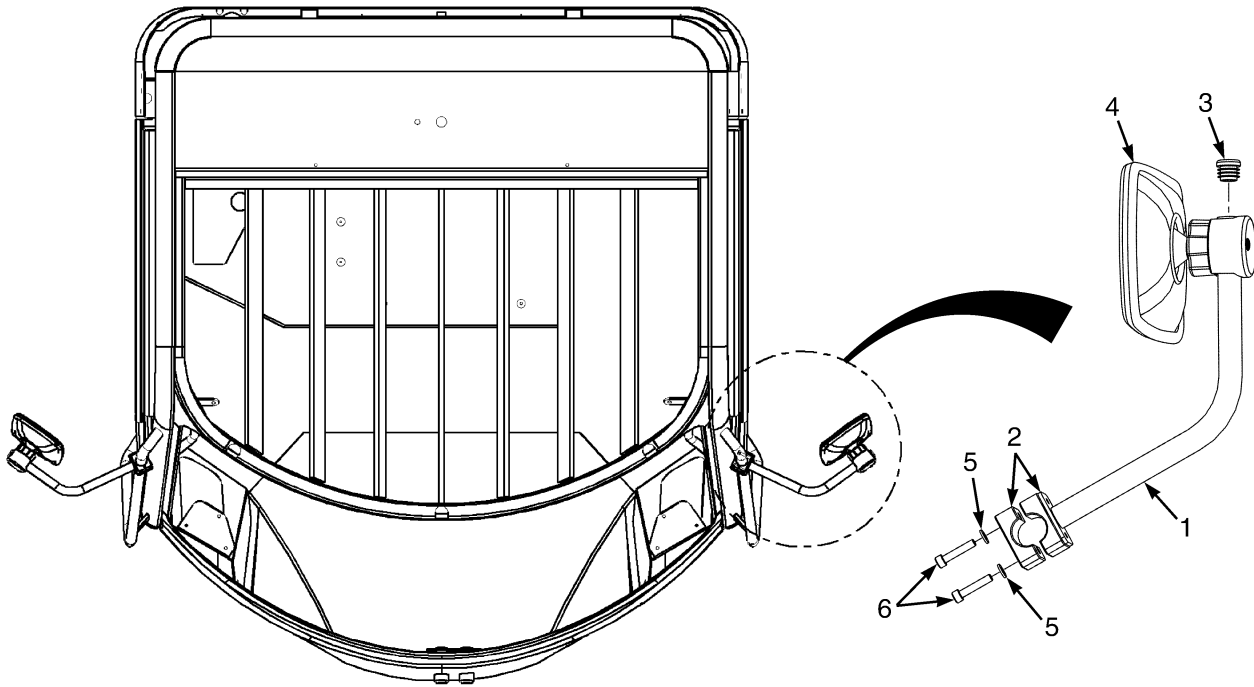


HP121119

CAB ATTACHING PARTS

ITEM	PART NO.	DESCRIPTION	QTY
1	580014773	Clamp	1
2	580048511	Clip	1
3	580028805	Washer	8
4	580051692	Bolt	8
5	580048512	Seal	2
6	580022240	Trim-Bulk	1
7	580022239	Cover	1
8	580025717	Edge Protector	AR
9	580022214	Washer	6
10	580017273	Screw	5
11	580022213	Nut	1
12	580021409	Console (RH Internal)	1
12	580025753	Cover (Control Column)	1
13	580014813	Screw	1
14	580025738	Screw	2
15	580025737	Clip	2
16	580025736	Bracket (Cup And Clip Board Holder)	1
17	580022207	Holder (Cup And Clip Board)	1
18	580025735	Rivet	5
19	580051691	Screw	4
20	580025715	Handle Assembly (Rear)	2
20	449001013	Capscrew	4
20	504226242	Washer	4
20	580016589	Cover (Capscrew Head)	4
21	580025716	Pad	4
22	580025743	Seal	AR
23	580022254	Plate (Air Duct Cover)	2
24	580025744	Screw	12
25	580022736	Mirror (Interior)	2
26	580084057	Cover	1
27	580022824	Foam (LH)	1
27	580022825	Foam (RH)	1
28	580022236	Screw	16
29	580080535	Plug	1
30	580080534	Plug	1
31	580025738	Screw	8
32	937100903	Nut	8
33	580025741	Dash Panel	1
33	580014811	Washer (Plastic)	6
33	449001170	Capscrew	6
33	580016589	Cover (Capscrew Head)	6

EXTERIOR MIRRORS (FIGURE 1-7)



HP000936

ITEM	PART NO.	DESCRIPTION	QTY
1	580090646	Bracket Wldmt	2
2	580090647	Hose Clamp	2
3	580090648	End Plug	2
4	580090649	Mirror	2
5	449021003	Washer	4
6	580055864	Capscrew	4

Thank you so much for reading.
Please click the “Buy Now!”
button below to download the
complete manual.



After you pay.

You can download the most
perfect and complete manual in
the world immediately.

Our support email:

ebooklibonline@outlook.com