

# 22B Integral Ripper



JOHN DEERE

## OPERATORS MANUAL

22B  
Integral Ripper

OMA48791 Issue H4 English

**John Deere Des Moines Works**  
**OMA48791 Issue H4**

LITHO IN U.S.A. (REVISED)  
ENGLISH



## INTRODUCTION



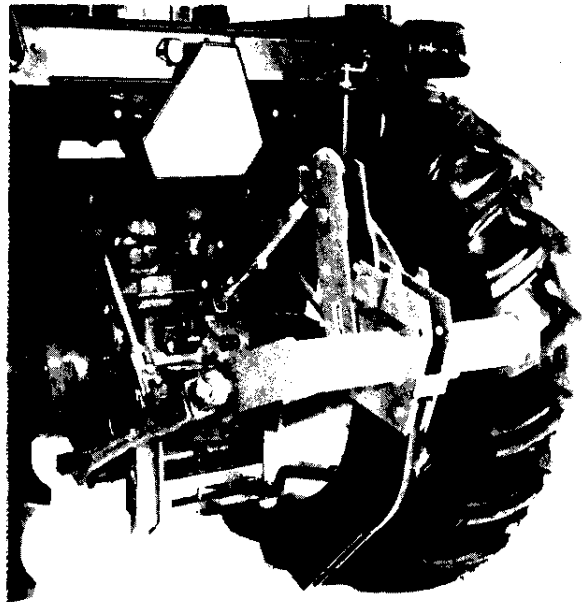
**This safety alert symbol identifies important safety messages in this manual. When you see this symbol, be alert to the possibility of personal injury and carefully read the message that follows.**

Right-hand (R.H.) and left-hand (L.H.) references are determined by standing at the rear of the ripper and facing the direction of forward travel.

This operator's manual contains SI Metric equivalents which follow immediately after the U.S. customary units of measure.

Record your ripper serial number in the space provided in Specifications section. Your dealer needs this information to give you prompt, efficient service.

The warranty on this ripper appears on your copy of the purchase order, which you should have received from your dealer when you purchased the ripper.



A27328

# Contents

|                                   | Page  |
|-----------------------------------|-------|
| SAFETY . . . . .                  | 2-3   |
| CRIME PREVENTION TIPS . . . . .   | 4-5   |
| PREPARING THE TRACTOR . . . . .   | 6-8   |
| PREPARING THE RIPPER . . . . .    | 9-11  |
| ATTACHING AND DETACHING . . . . . | 12-13 |
| TRANSPORTING . . . . .            | 14    |
| OPERATING THE RIPPER . . . . .    | 15-16 |
| ATTACHMENTS . . . . .             | 17-18 |
| SERVICE . . . . .                 | 19-20 |
| STORAGE . . . . .                 | 21    |
| ASSEMBLY . . . . .                | 22    |
| SPECIFICATIONS . . . . .          | 23-24 |
| INDEX . . . . .                   | 25    |

# Safety

## TRANSPORT SAFELY

While transporting the ripper on a public road, follow safety instructions outlined in Transporting section.

The ripper should be transported at a maximum speed of 20 mph (32 km/h). Do not exceed.

Use care when transporting across rough ground.

Never travel at any speed which does not permit adequate control of steering and stopping.

Be sure the ripper is locked in transport position.

SAX; B03;135A A 140284

## OPERATING THE RIPPER SAFELY

When backing the tractor to attach the ripper, be sure no one is standing between the tractor and the ripper.

Never permit any person other than the operator on the tractor.

Always lower the ripper to the ground when not in use.

When the ripper is in a raised position, be sure the rockshaft control lever is not bumped or touched by anyone.

SAX; B03;135A B 140284

816;P02 270284

### DISPOSE OF SPRAY CANS SAFELY

If spray can paint is used for protecting the standard to be put in storage, be careful when discarding empty cans. Do not incinerate or puncture can.

5AX; B03;;13SA C 140284

### PROTECT AGAINST NOISE

Prolonged exposure to loud noise can cause impairment or loss of hearing.

Wear a suitable hearing protective device, such as earmuffs (A) or earplugs (B), to protect against objectionable or uncomfortable loud noises.



A00;X7662 B04;;14SA I 100583

### DO NOT MODIFY RIPPER

Unauthorized modifications to the machine may impair the function and/or safety and affect machine life.

5AX; B03;;13SA D 150284

# Crime Prevention Tips

## GOOD ADVICE

Keep your machine damage-free and YOURS!

Follow the advice on these pages to reduce vandalism, discourage theft, and help recover your machine if it is stolen.

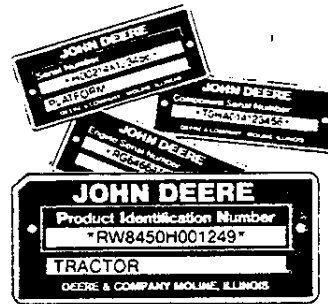
TAKE A BITE OUT OF  
**CRIME**  
© 1979 The Advertising Council, Inc.



AB6/TS140 053/CRPRV A 181183

## RECORD IDENTIFICATION NUMBERS

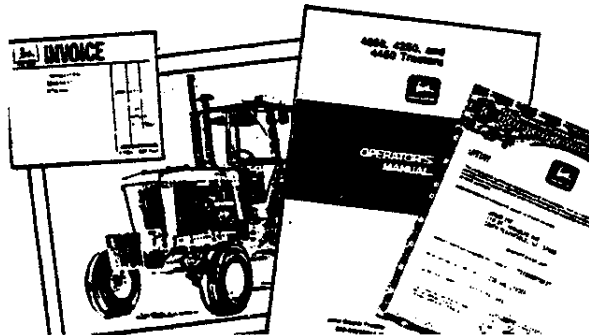
1. Record Product Identification Number (PIN) of unit and identification numbers of engine, component, attachment, etc. EXACTLY as they appear on the plates.
2. Check that the complete and correct numbers appear on all documentation (insurance, financial, warranty, manufacturer's certificate of origin, etc.). Keep all documents in a safe location.
3. If available, participate in an "Owner Applied Numbering Program" and mark your own machines.



AB6/TS161 053/CRPRV B 091283

## MAINTAIN DOCUMENTED PROOF OF OWNERSHIP

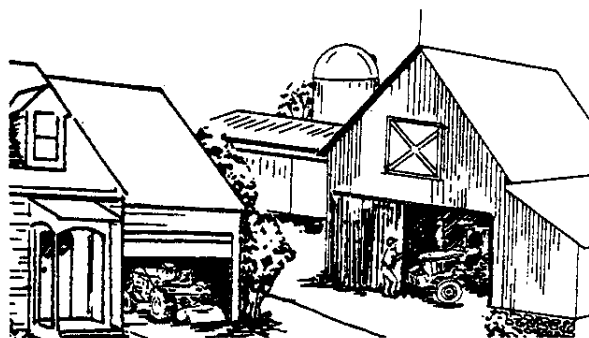
1. Keep in a safe location all documents (invoices, warranty cards, manufacturer's certificate of origin, if available, etc.) that accompanied your machines at the time of purchase.
2. Take color photographs of each machine from several angles.
3. Maintain an up-to-date inventory of all machines. Check regularly to insure no machines have been stolen.



AB6/TS142 053/CRPRV D 181183

## PARK INDOORS OUT OF SIGHT

1. Lower all equipment making the machine harder to move.
2. Remove ignition key. If so equipped, lock cab doors, windows and any vandal protection devices. Place hard-to-move equipment in front of exits.
3. If machine is being stored, remove the battery or any essential component in the electrical system.
4. Set wheels in widest position making loading more difficult. Secure all openings to storage buildings.



AB6/TS143 053/CRPRV D 100184

Thank you so much for reading.  
Please click the “Buy Now!”  
button below to download the  
complete manual.



After you pay.

You can download the most  
perfect and complete manual in  
the world immediately.

Our support email:

[ebooklibonline@outlook.com](mailto:ebooklibonline@outlook.com)